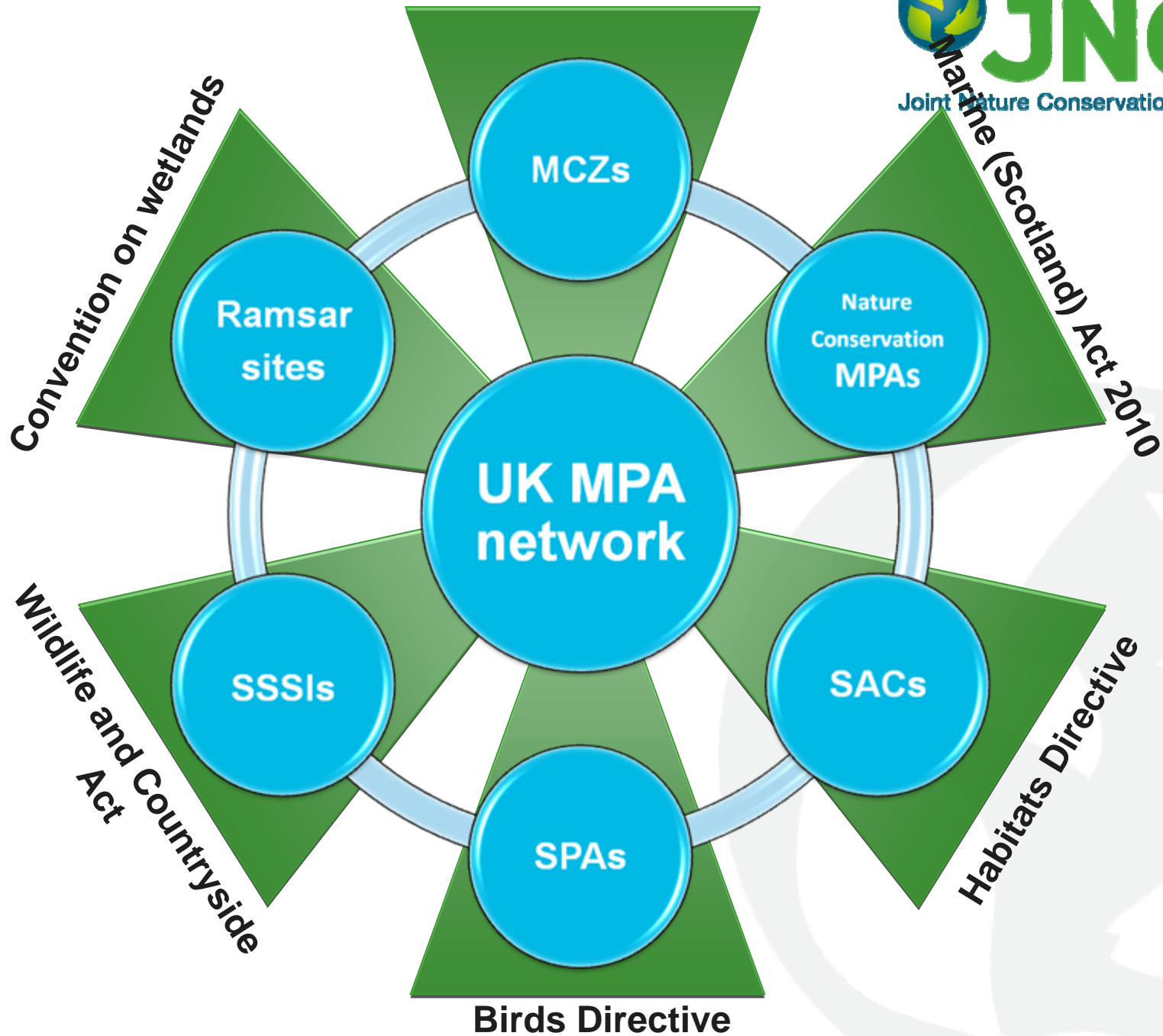


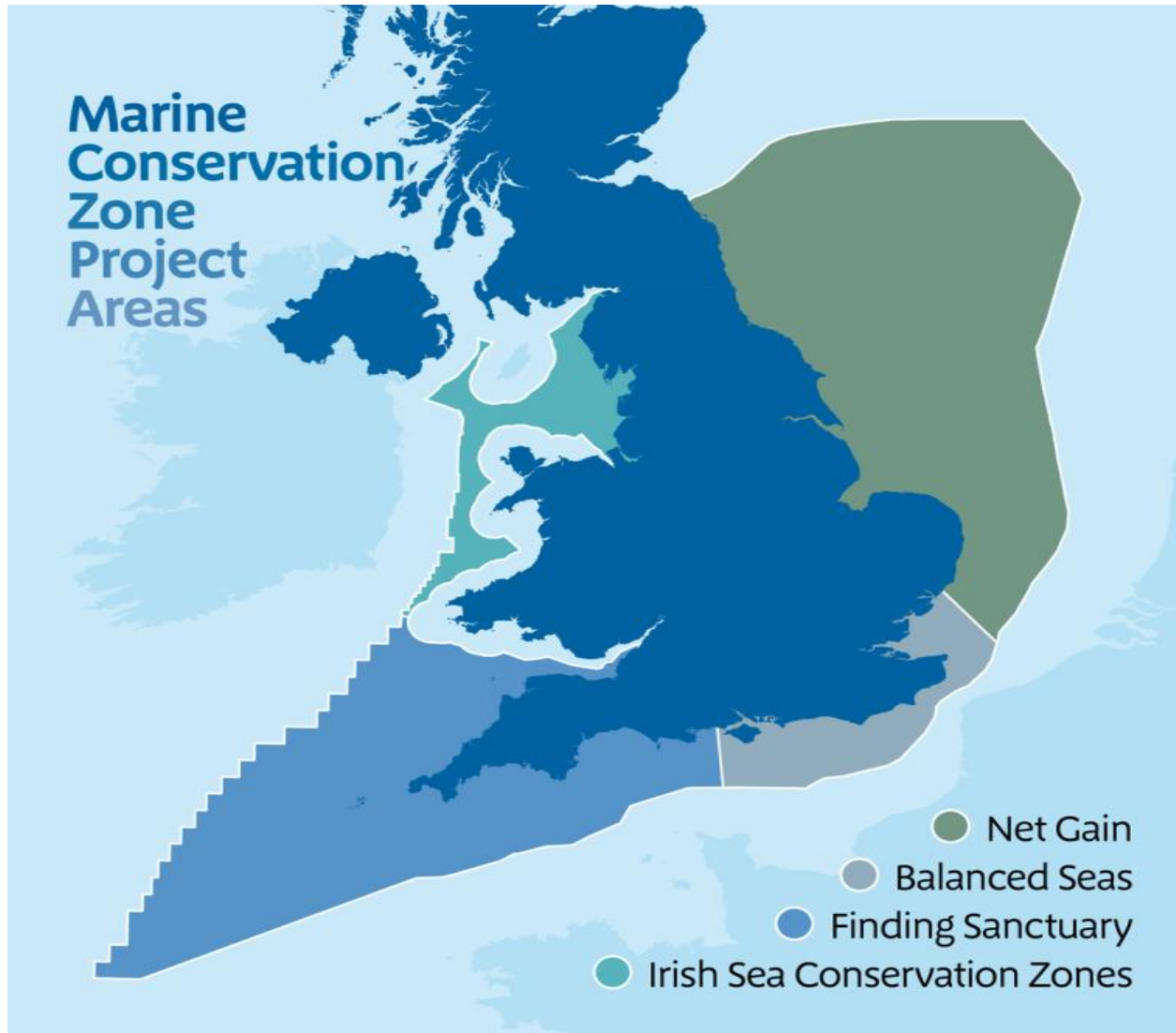
UK MPAs - Irish Sea Conservation Zone

Johnny Murt
Amy Ridgeway

Joint Nature Conservation Committee

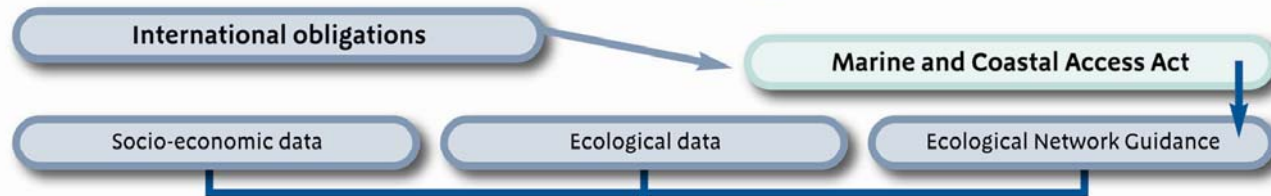


The Marine Conservation Zone Project



Marine Conservation Zone Designation Process

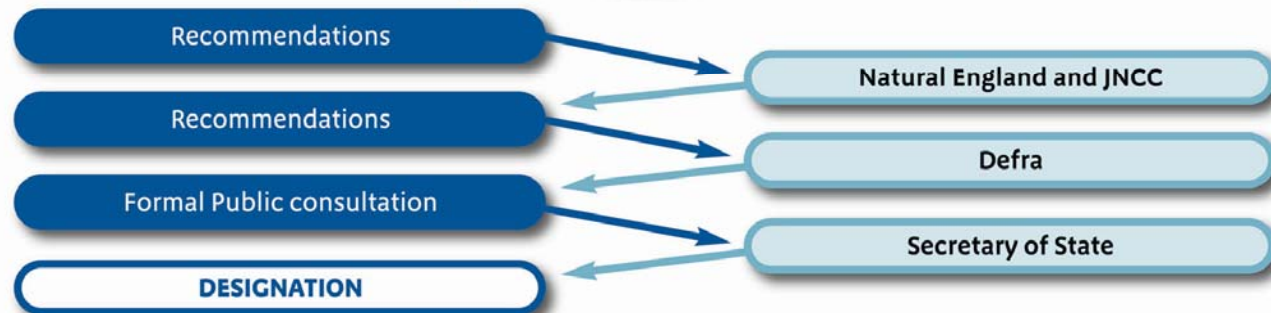
2008



2010



2011



2012

MCZ process timetable:

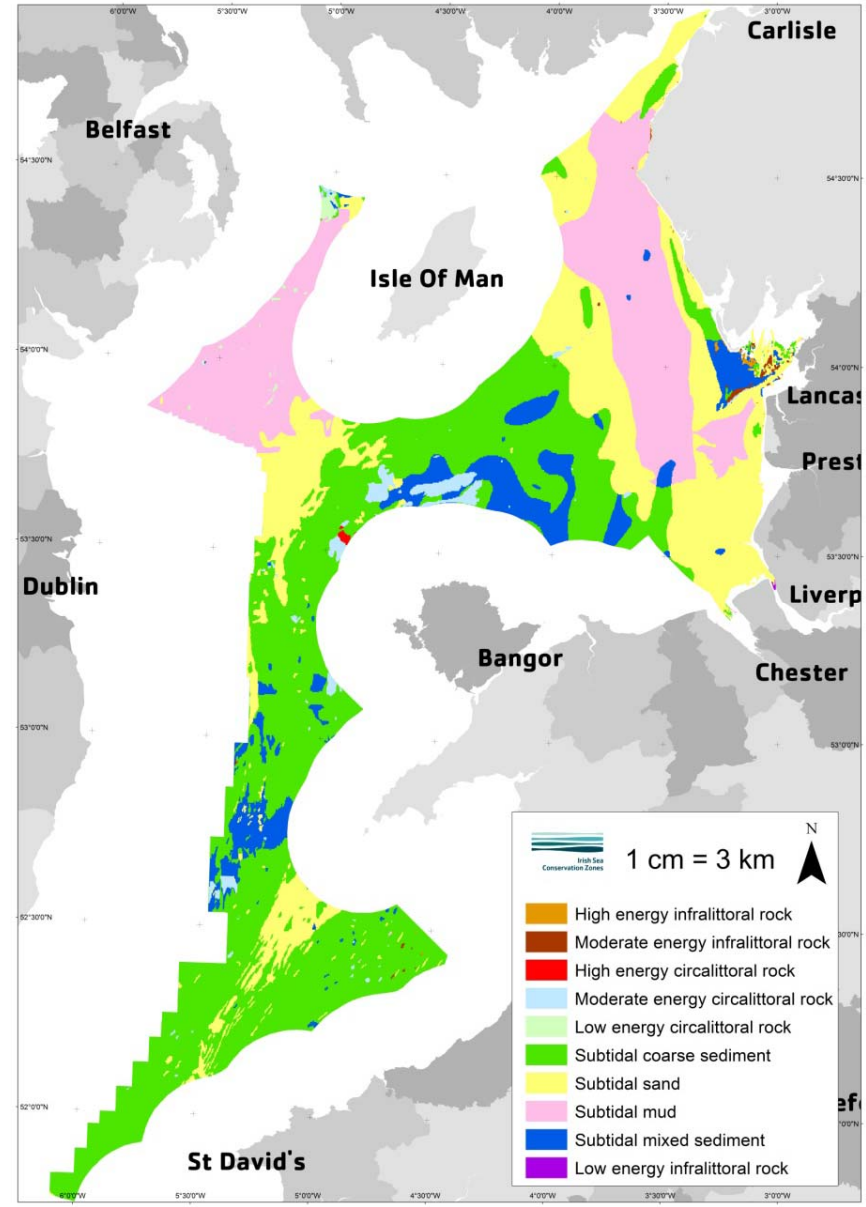
Activity	Timeframe
Regional Stakeholder Groups established	Jan-April 2010
Explore site options using available information and guidance documents <i>First iteration</i> <i>Second iteration</i>	April 2010 – March 2011 <i>June 2010</i> <i>Oct 2010</i>
<i>Third iteration</i>	<i>Feb 2011</i>
Recommendations and Impact Assessment passed to JNCC and NE	August 2011
Impact assessment	September 2011
JNCC and NE collate recommendations and Impact Assessments and provide advice to Ministers on whether the Ecological Network Guidance is satisfied	November 2011
Public consultation	2012
Designation	December 2012

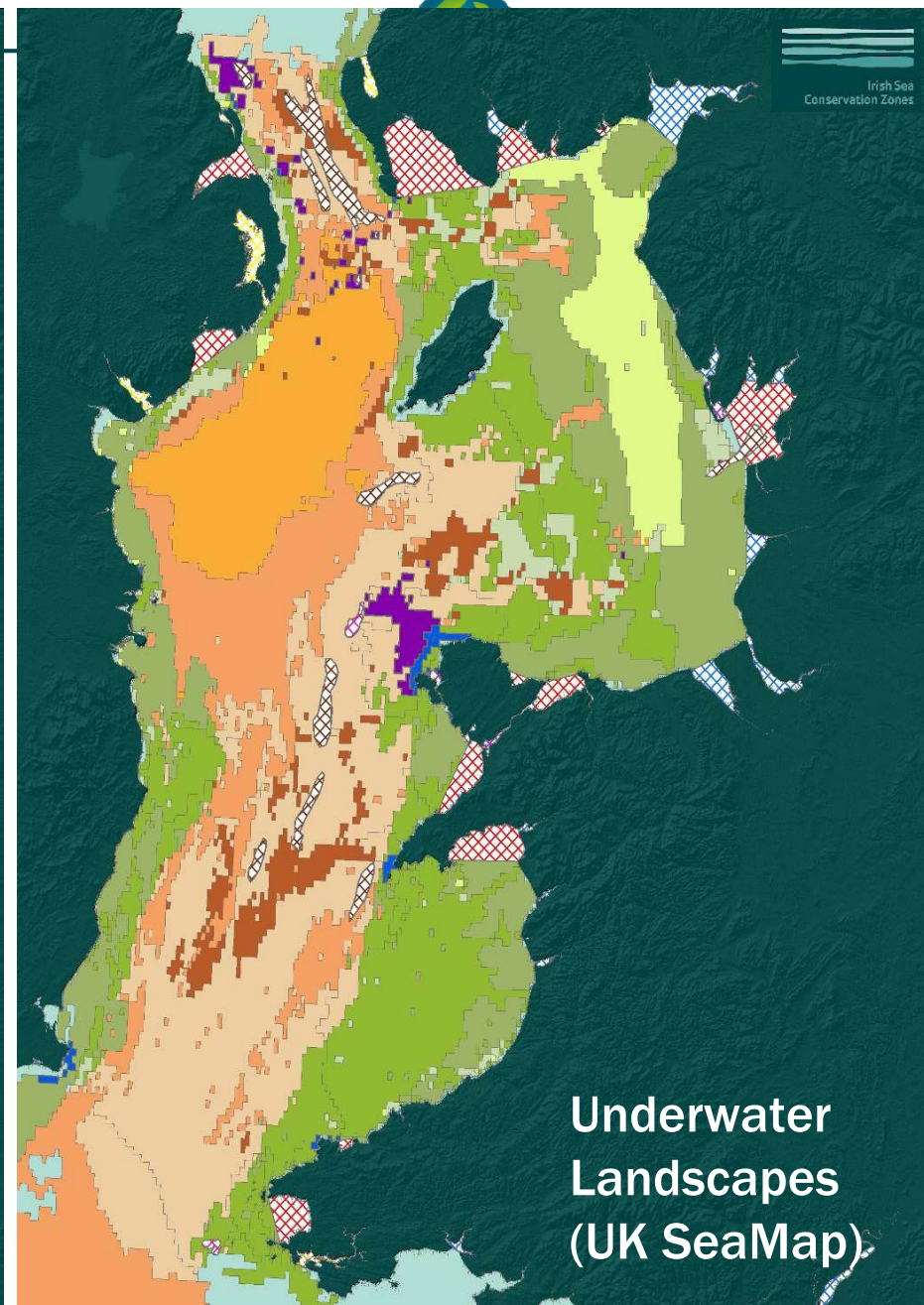
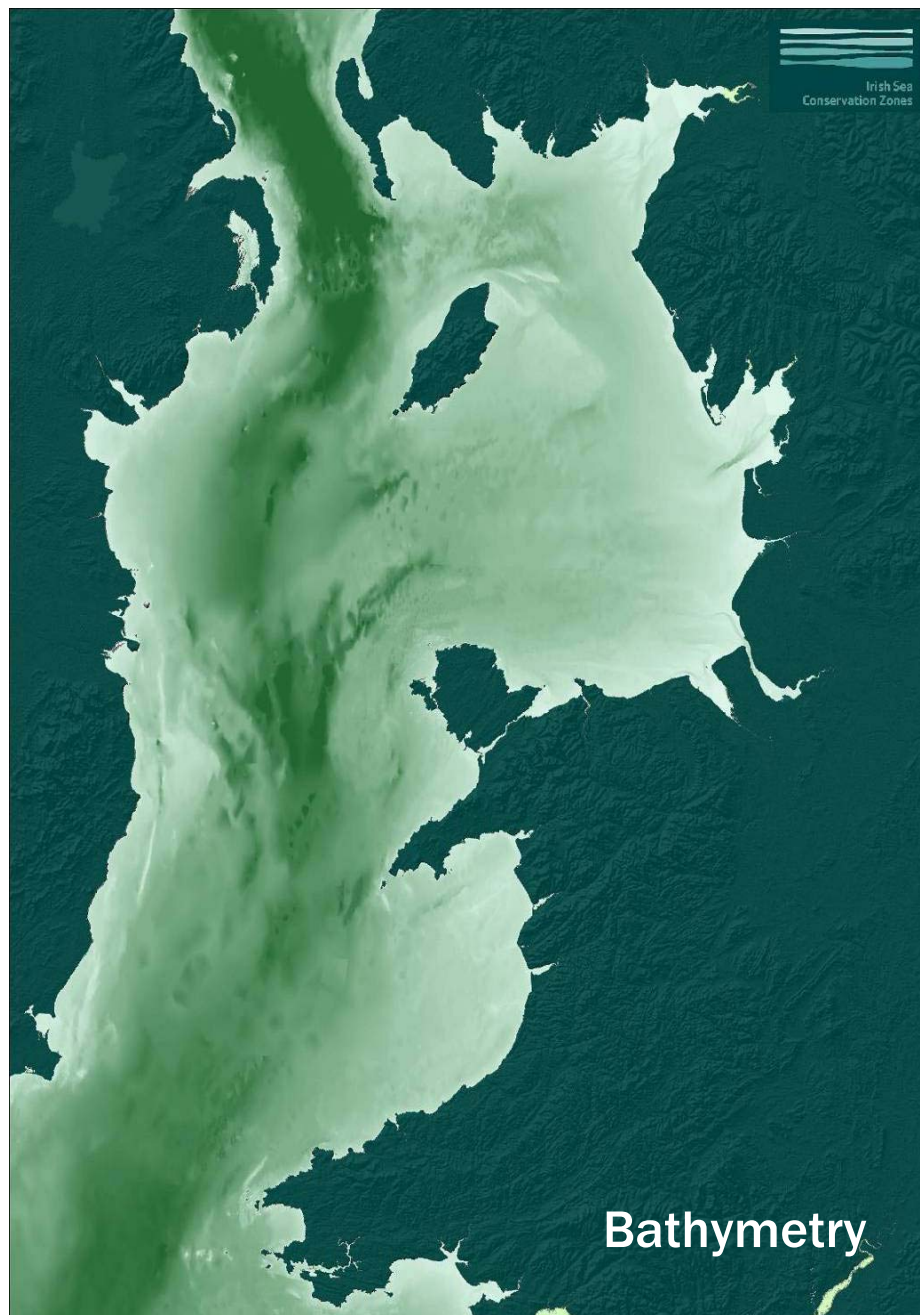
ISCZ

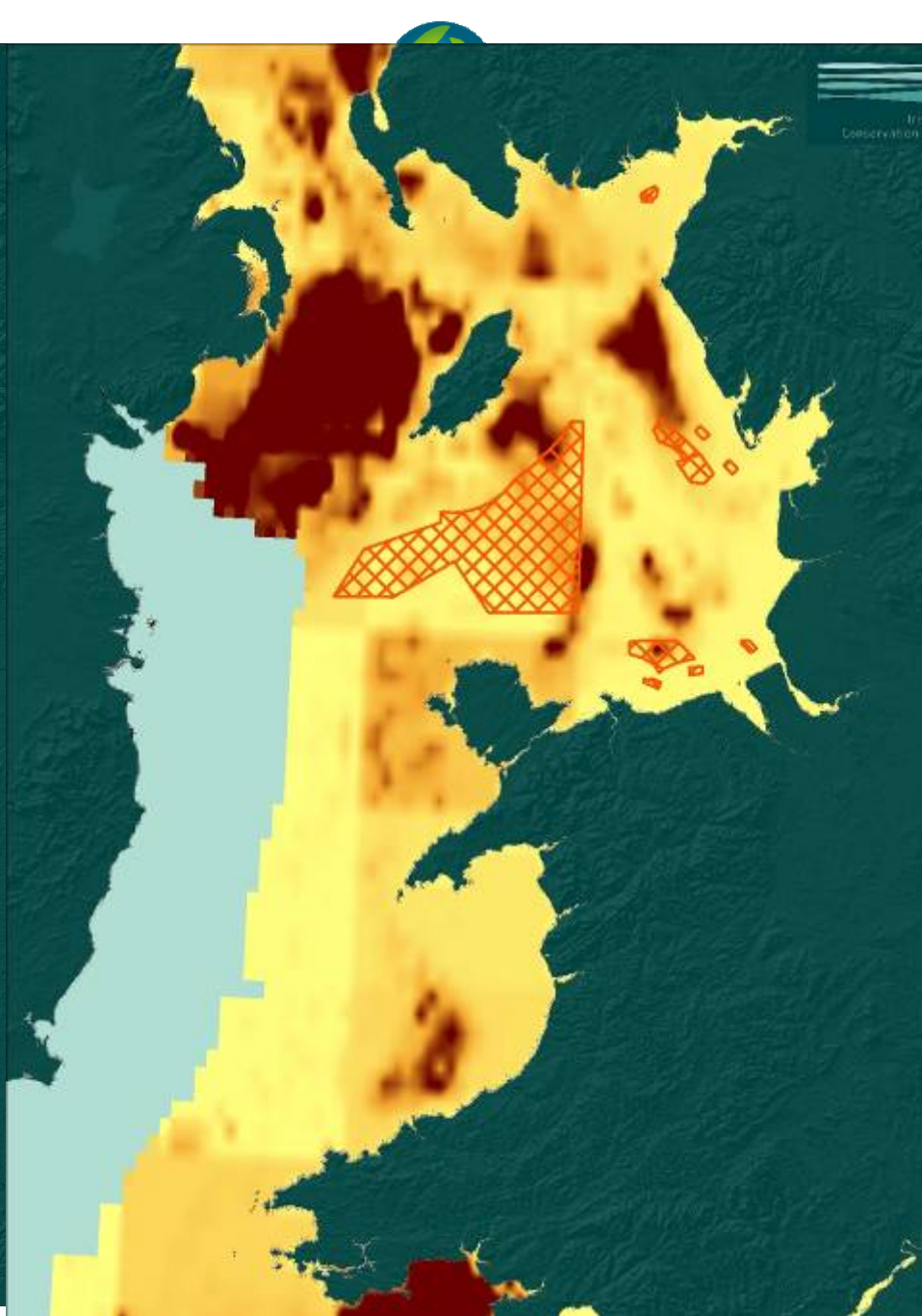
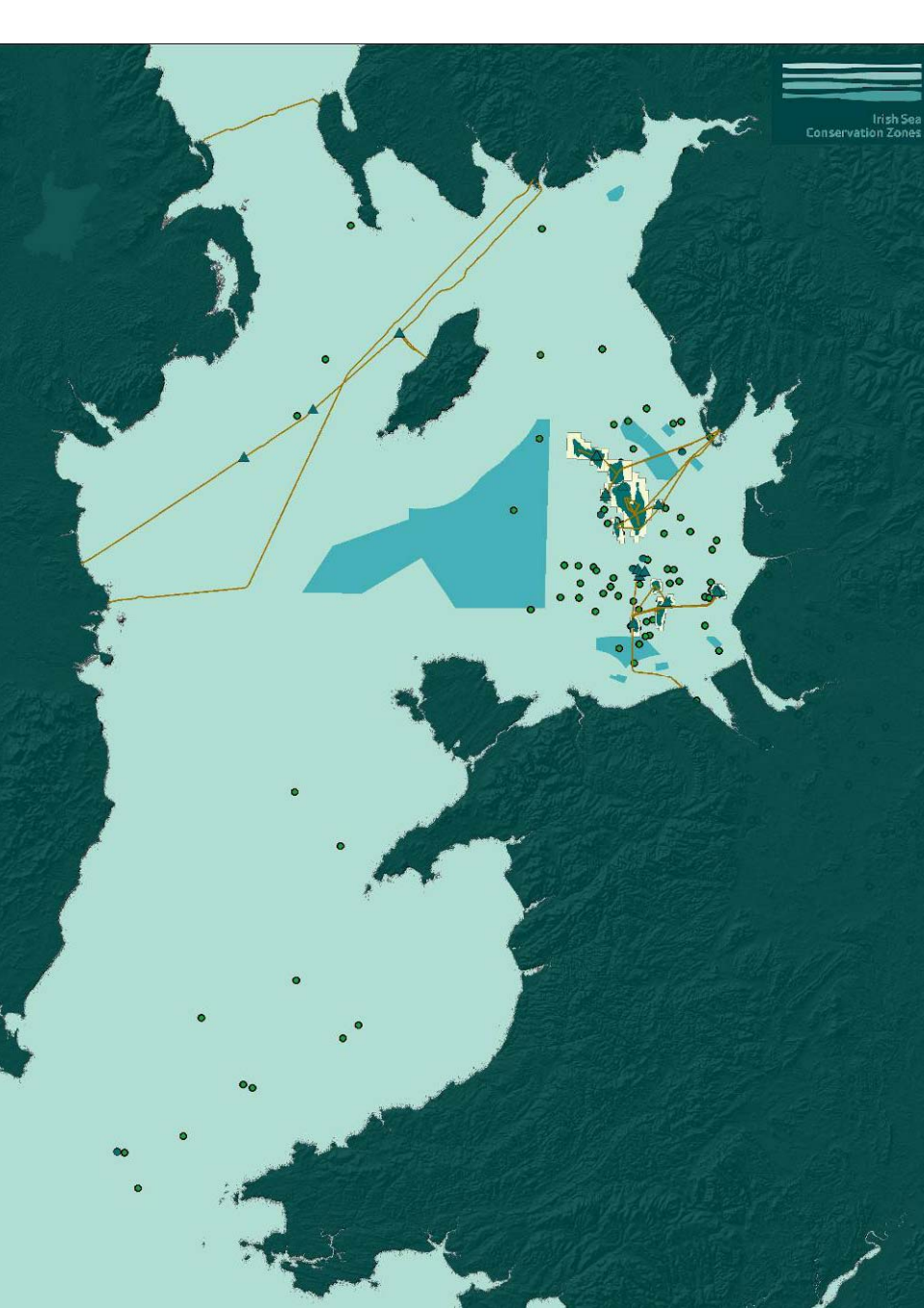
- Stakeholder led process
- 40 people on group
- Fisheries
- Renewables
- Oil & Gas
- Shipping
- Cables
- Etc.....



- Diverse habitats in small area
- Fishing grounds
- Round 3 wind farms
- Oil and Gas

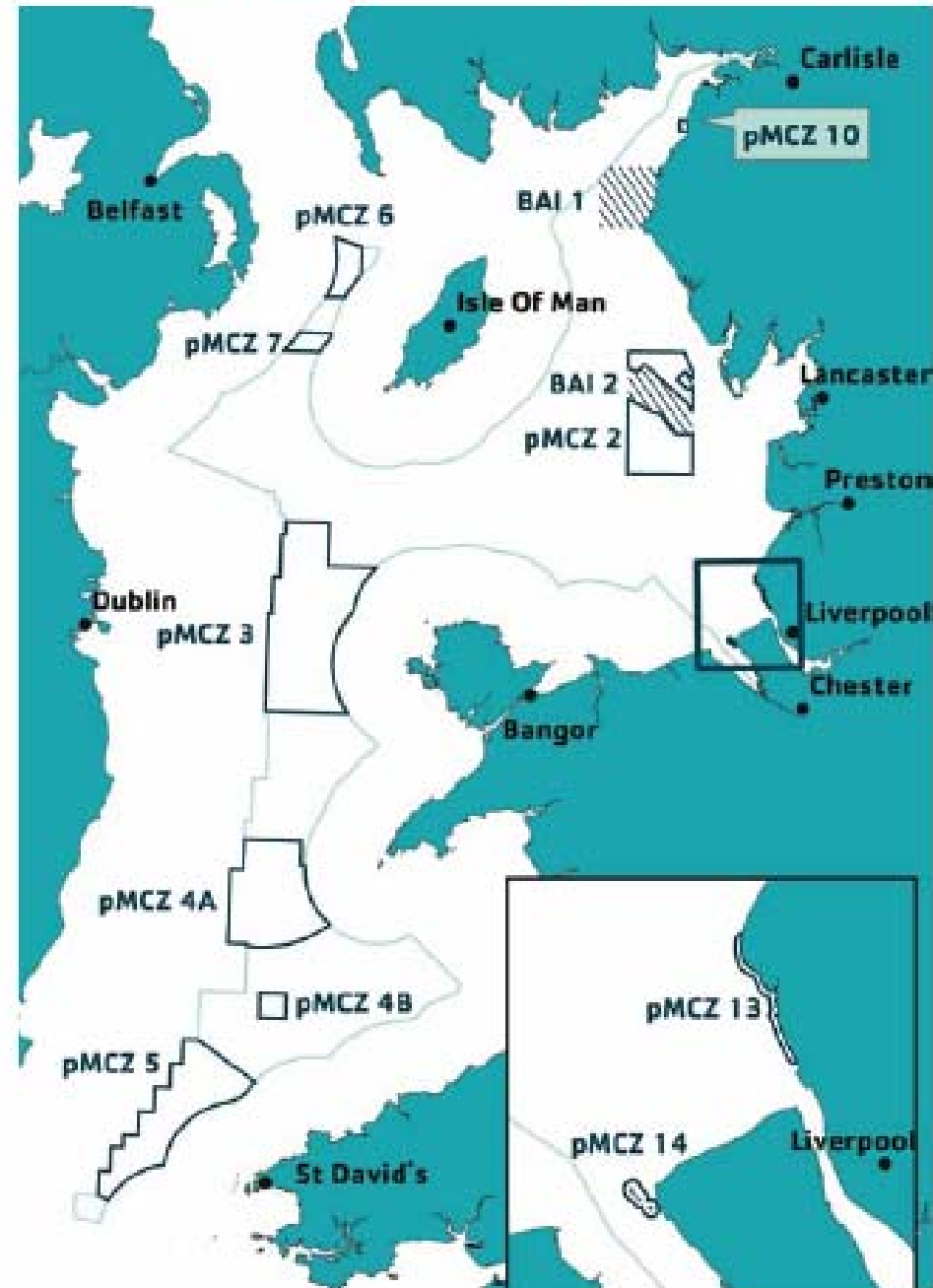






ISCZ 3rd Iteration

- Activity data
- Habitat data
- Stakeholder group has identified these draft MCZs



ISCZ – Upcoming Meetings

- May 9th – 10th 2011 – 6th Regional Stakeholder Group meeting
- July 2011 (TBC) – Final Regional Stakeholder Group meeting

Impact Assessment

- Impact assessment will identify the costs and benefits of each individual MCZ if designated
- Features protected by the MCZ
- Activities within or in the vicinity of the MCZ
- Cost of measures for managing
- Cost/Benefits of impacts of MCZs on human activities
- Cost/Benefits arising from impact of MCZ on other ecosystem services

Management Options

Within 6nm limit – Only applies to UK Vessels

Preferably be introduced by relevant IFCA

Other regulatory options include byelaws or fishing license conditions (MMO).

Voluntary restrictions will be explored before regulatory measures are introduced

Beyond 6nm limit – All EU Vessels (with historic fishing rights)

Fishing Regulation under the CFP

Regulation will apply to all EU vessels at the same time

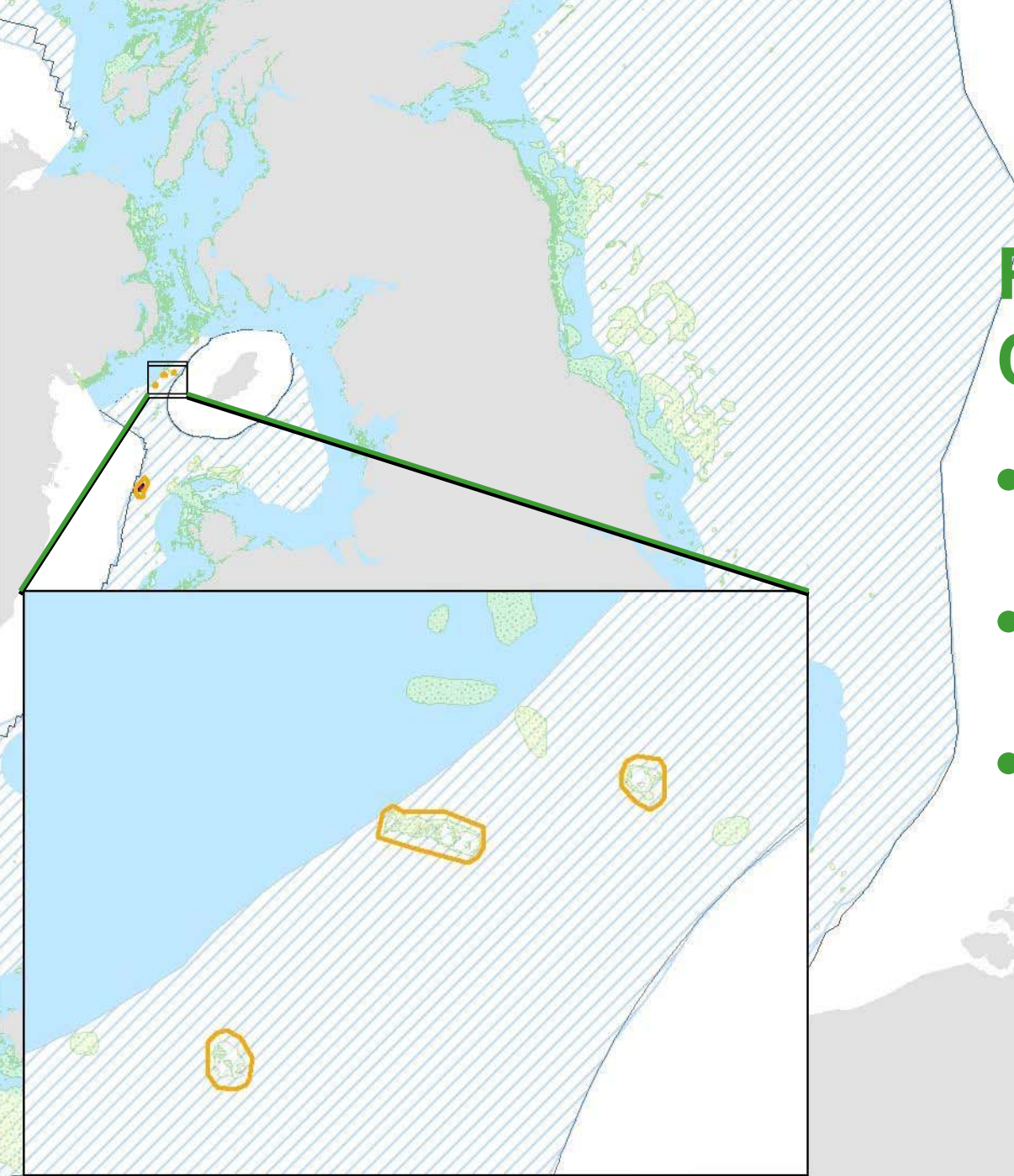
2011 Offshore Consultation

- Summer 2011
- 12 week public consultation
- Consultation on:
 - Scientific justification for site and boundary
 - Impact Assessment
- Information available from jncc.defra.gov.uk



Pisces Reef Complex

- Annex I stony and bedrock reef
- Composite site of three sections
- 6.97 km² in total



Croker Carbonate Slabs

- Annex I submarine structures made by leaking gases
- 66 km²



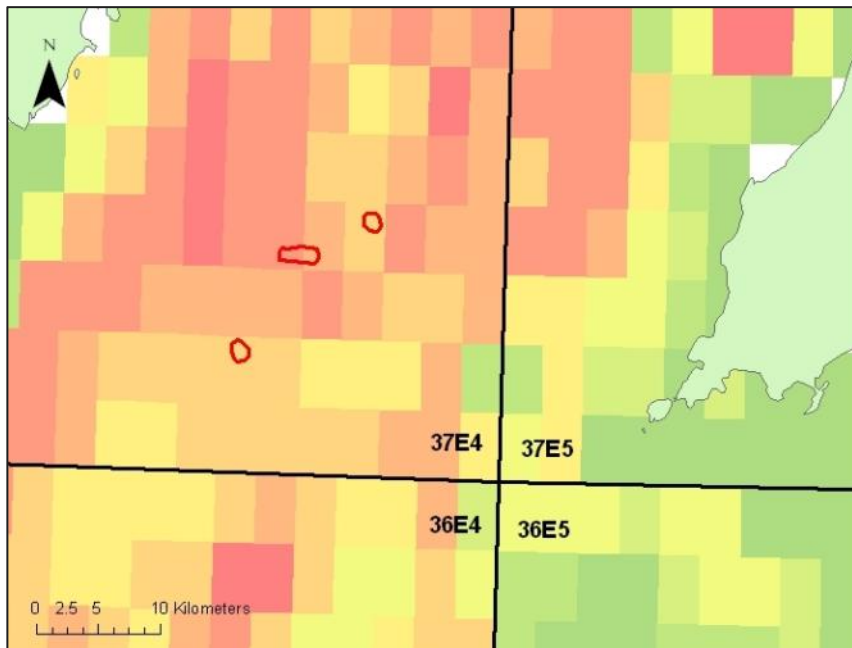
Impact Assessment

- Socio-economic effects of site designation on UK economy
- Assessment of known activities within sites (UK and European)
- Likely costs based on generalised possible management scenarios
- Possible management scenarios based on what may be needed to achieve Conservation Objectives for the site

Assessment of value of fishing activity from the dSACs

- Coarse assessment of VMS and landings data
- VMS data from 2006-2009
- Assumes no fishing from vessels <15m
- Fisheries characterised from catch data by ICES rectangle (2006-2009 data) for proportion of rectangle within the region
- No catch data for non-UK vessels to non-UK ports

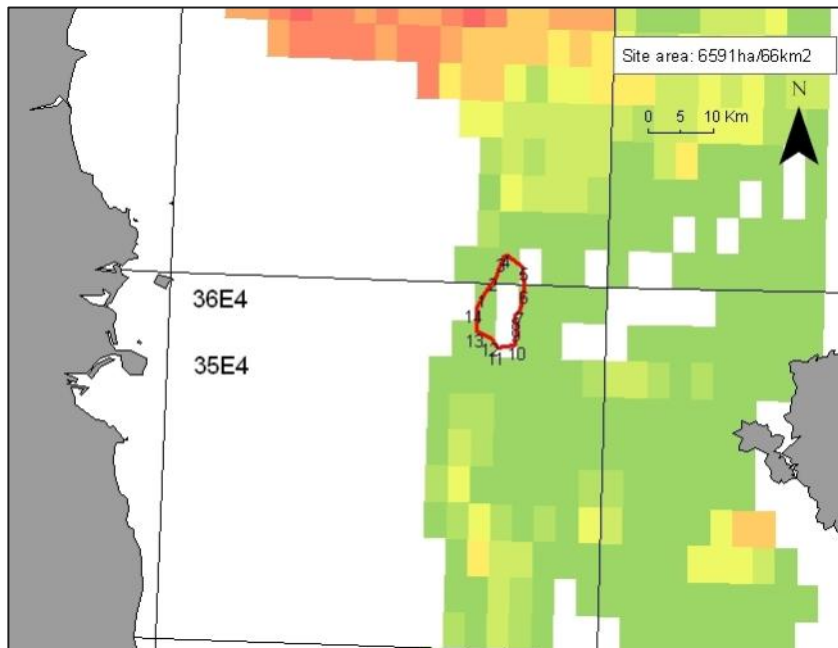
Summary of assessment of fishing activity from the two sites



Pisces Reef Complex

- Northern Ireland (93%) and Scotland (5%)
- Nephrops (71%), scallop (7%), and crabs (6%)
- Nephrops (72%), pots (13%), mechanised dredges (7%) and otter (bottom) trawls (4%)

Summary of assessment of fishing activity from the two sites



Croker Carbonate Slabs

- Northern Ireland (85%), Belgium (11%) and Ireland (4%)
- Nephrops (68%), haddock (6%), sole (6%), cod (5%)
- Nephrops (76%), beam trawl (9%), otter (mid) (8%)

What consultation responses can we take into account?

- Scientific justification for identification of site:
 - Additional scientific data on distribution of habitats or species within the sites (with location information)
- Impact assessment:
 - Is our assessment of current fishing activity correct? If not, can you provide information?
 - Do you have any additional or alternative data we could use in the assessment?
 - Do you have information on fishing patterns prior to 2006?
 - Do you know if vessels <15m fish at the site?
 - If fishing were restricted over part of the site, how would you change your activities (eg. stop fishing, move elsewhere, change gear type)?

Contact details:

All the information for the consultation will be available on the JNCC website once the consultation starts:

<http://jncc.defra.gov.uk/marineconsult>

Includes:

- Summary information
- Scientific justification for sites (SAC Selection Assessment document)
- Draft Conservation Objectives and Advice on Operations document
- Consultation Impact Assessment document
- GIS boundaries for sites
- Form for responses

To contact us about the consultation process - including responding to the consultation or any questions

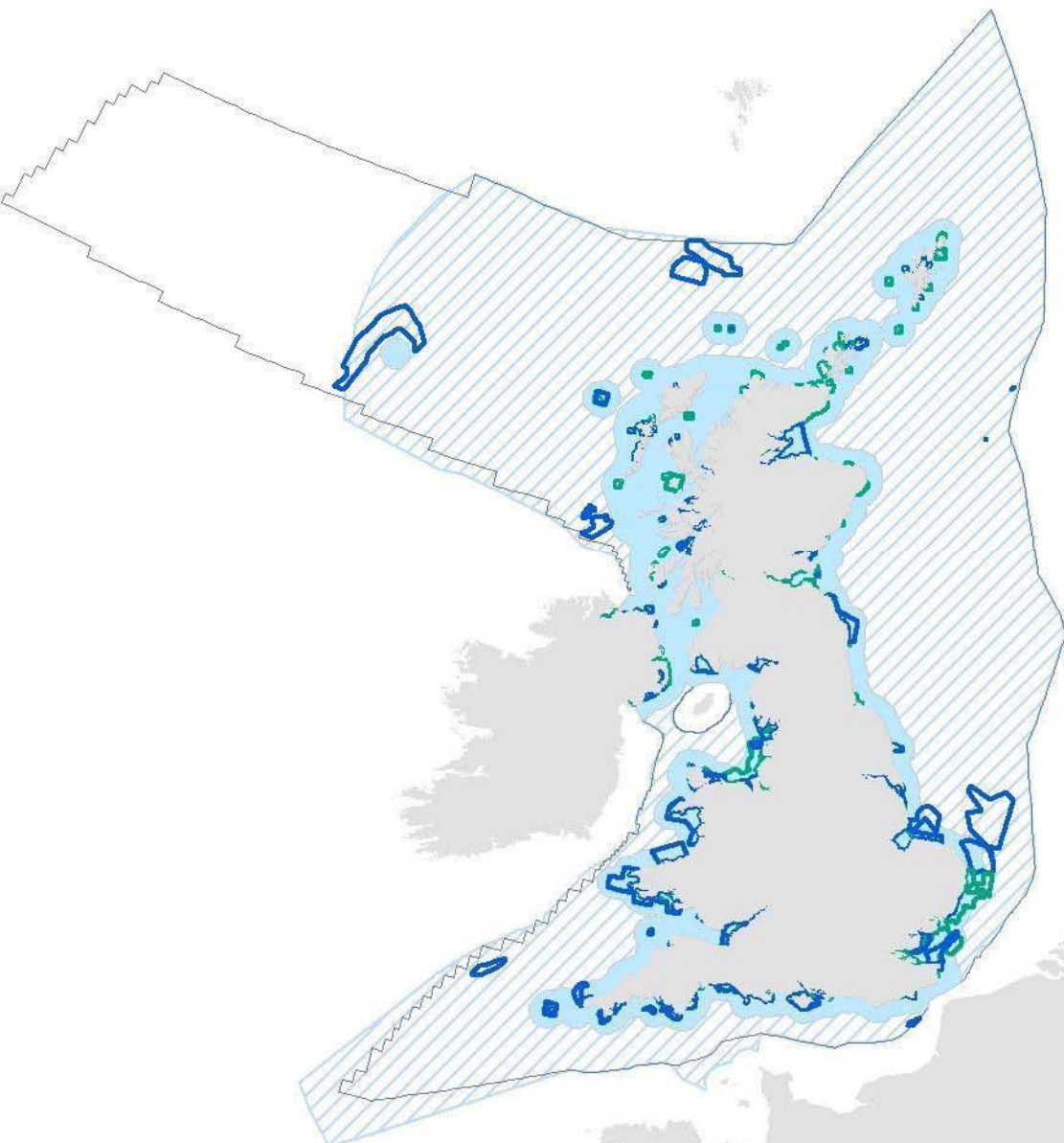
email: offshoreconsult@jncc.gov.uk

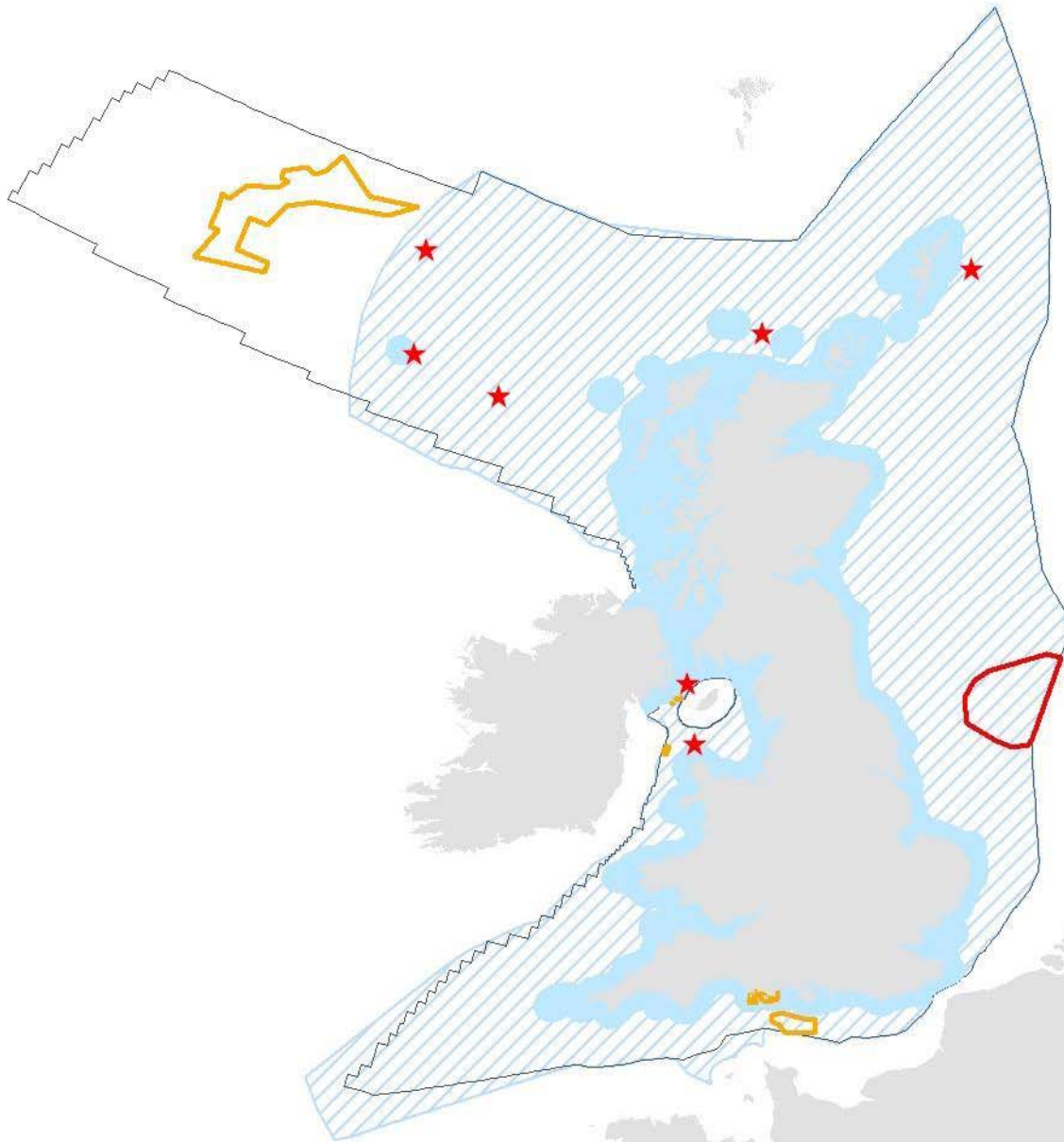
Any questions?

Johnny Murt & Amy Ridgeway
Johnny.murt@jncc.gov.uk, amy.ridgeway@jncc.gov.uk
www.jncc.gov.uk/marineprotectedareas

Natura 2000 sites

- 94 'marine' SACs
- 107 'marine' SPAs



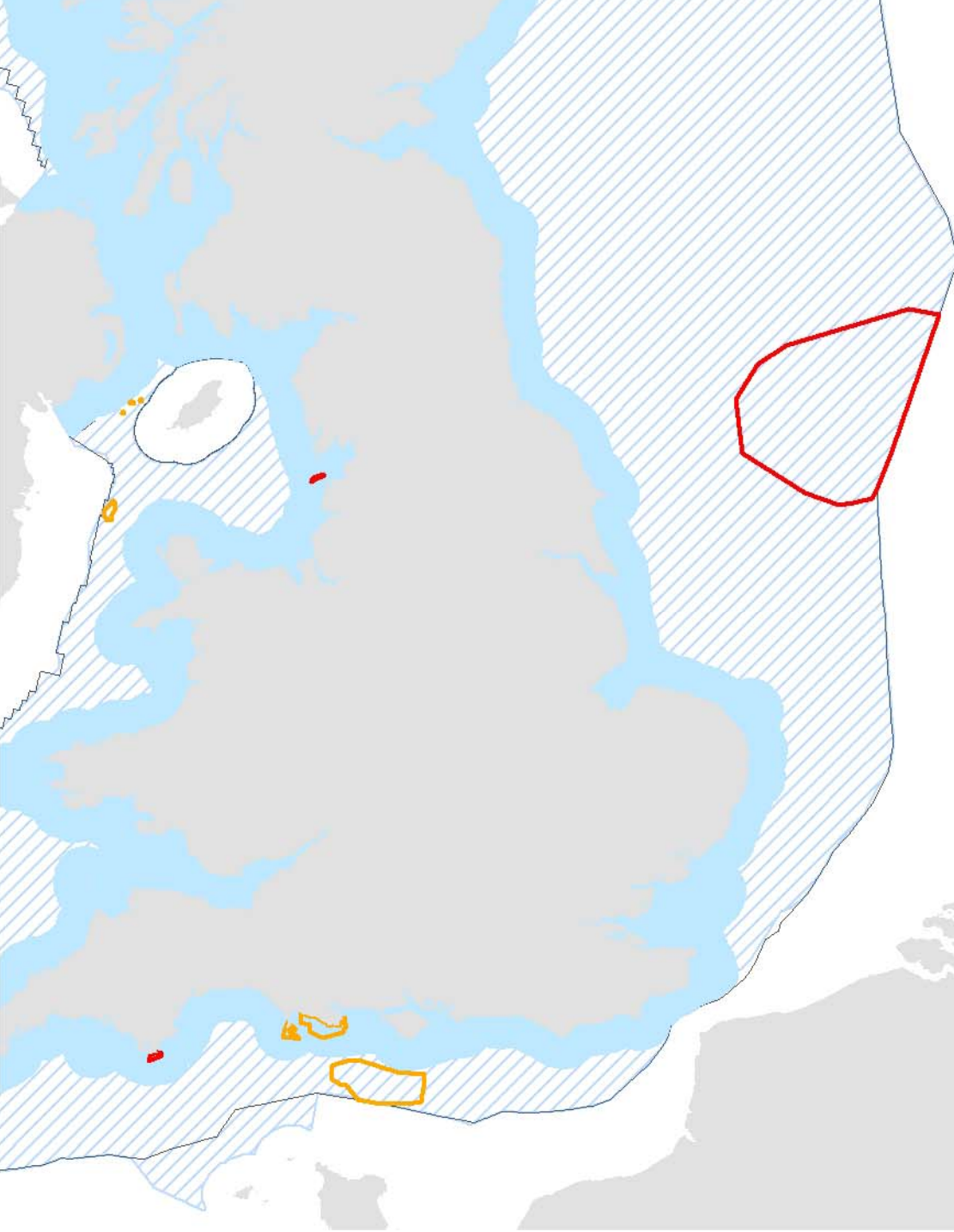


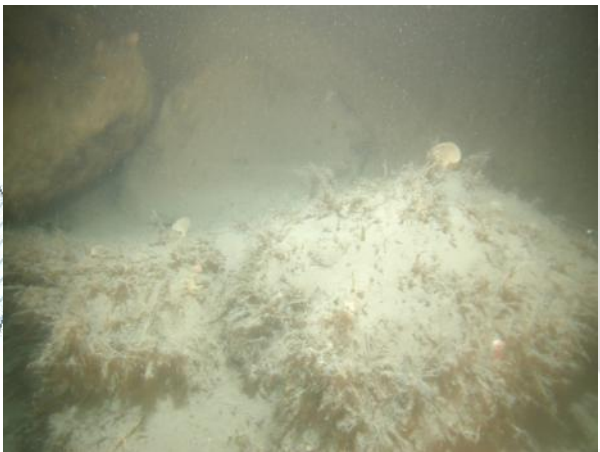
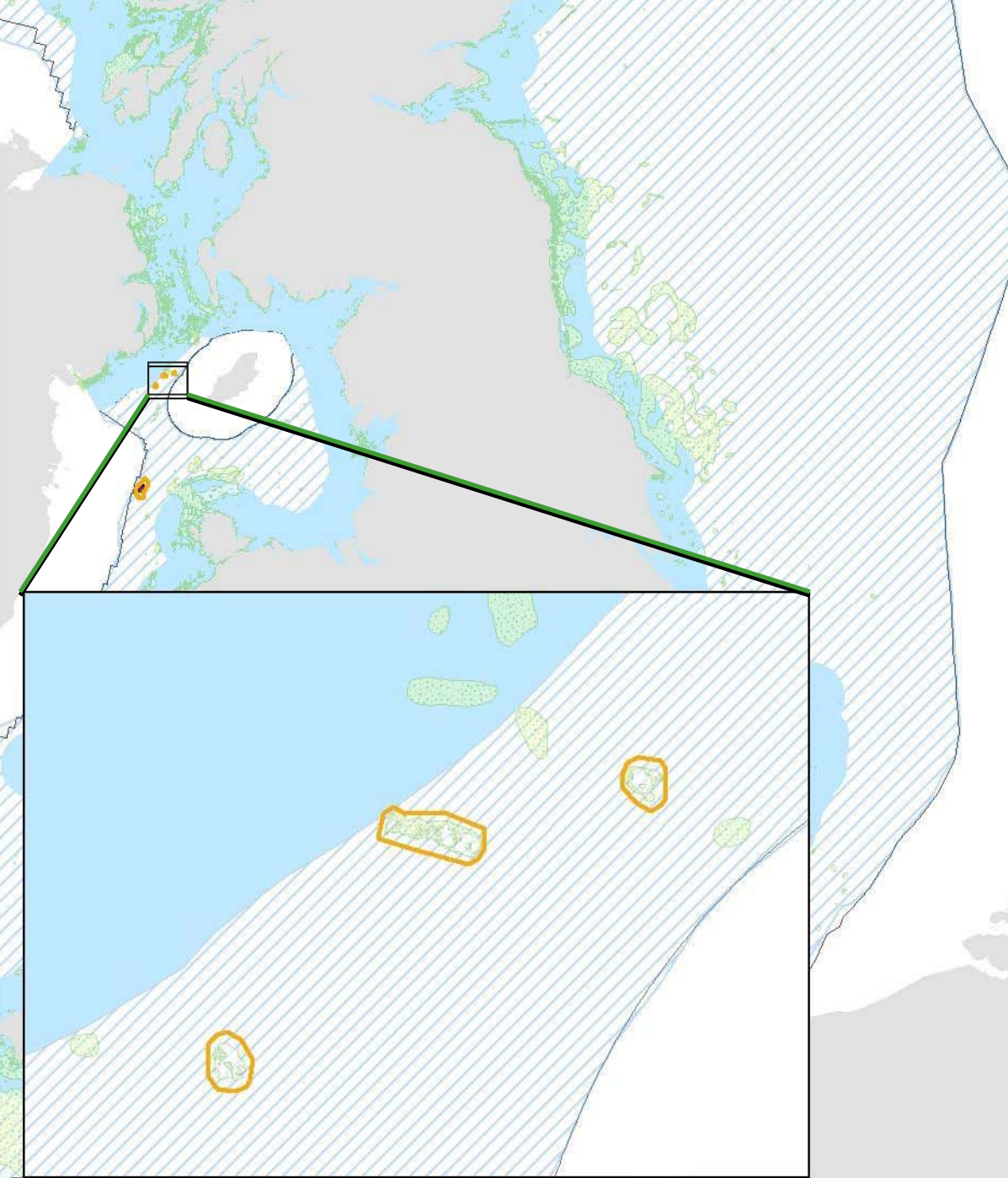
‘Areas of Search for SACs’

- 4-7 offshore areas of search for reefs
- 4 areas in inshore waters (Scotland and Northern Ireland)
- Aim to complete Natura network by 2012

Sites in progress

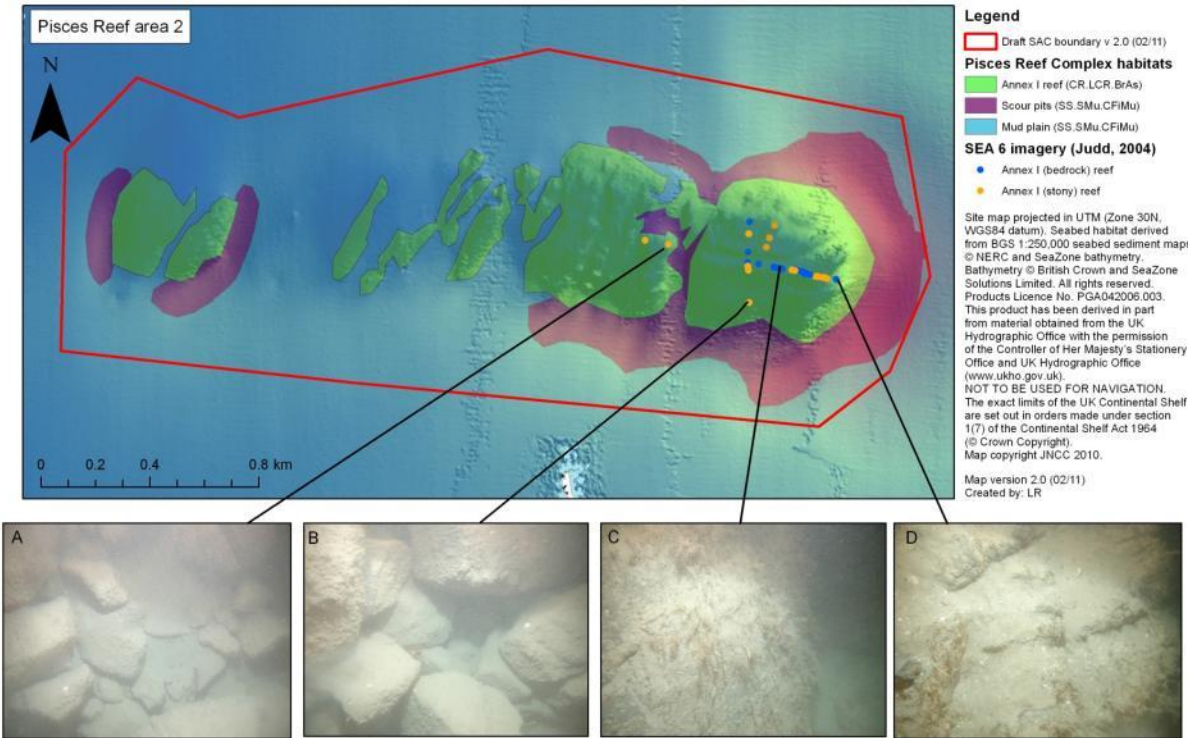
- 3 possible SACs:
 - 2 inshore;
 - 1 offshore.
- 4 draft SACs:
 - 1 inshore;
 - 3 offshore.



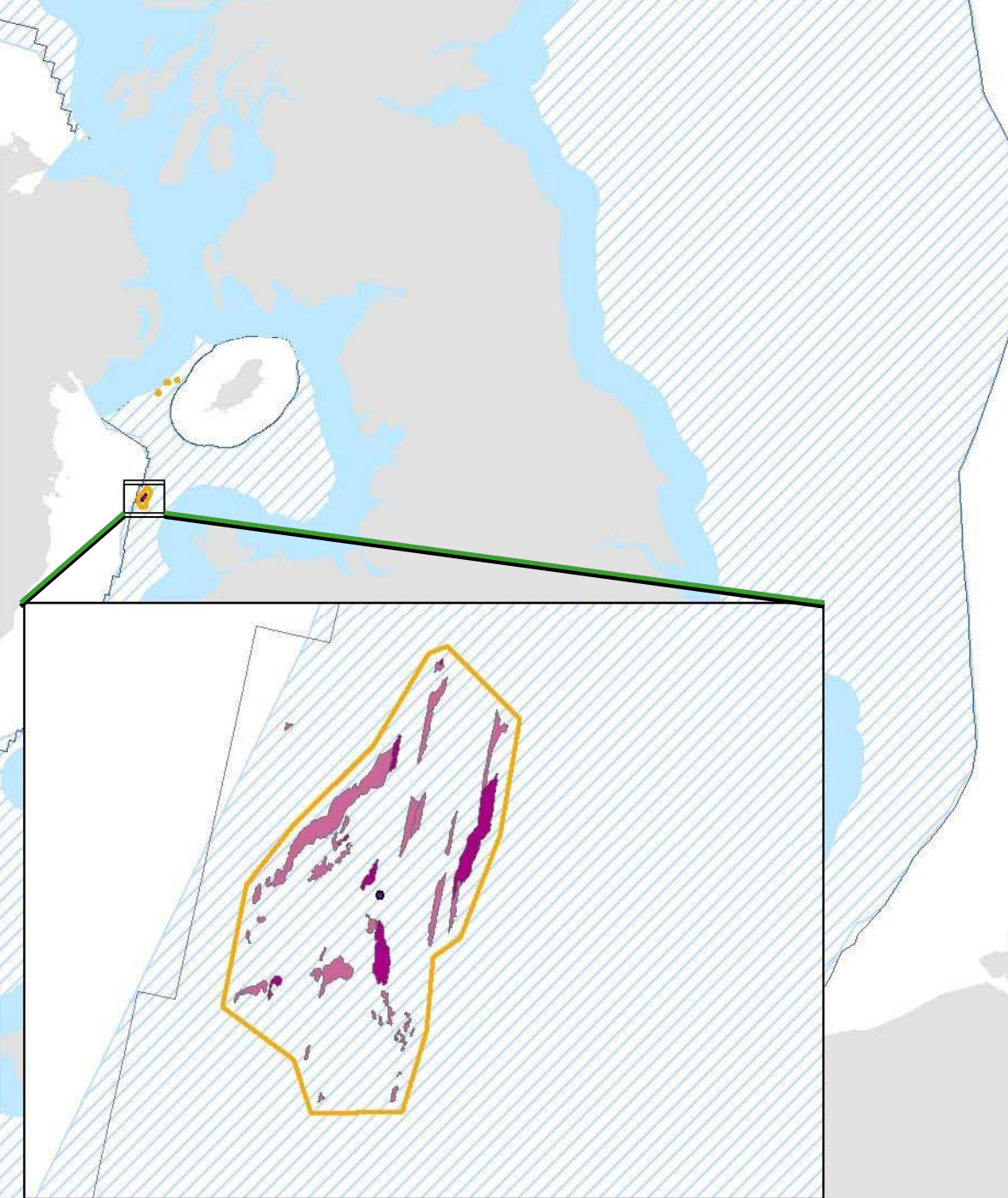


Pisces Reef Complex

- Broadscale habitat map showing stony reef and bedrock reef

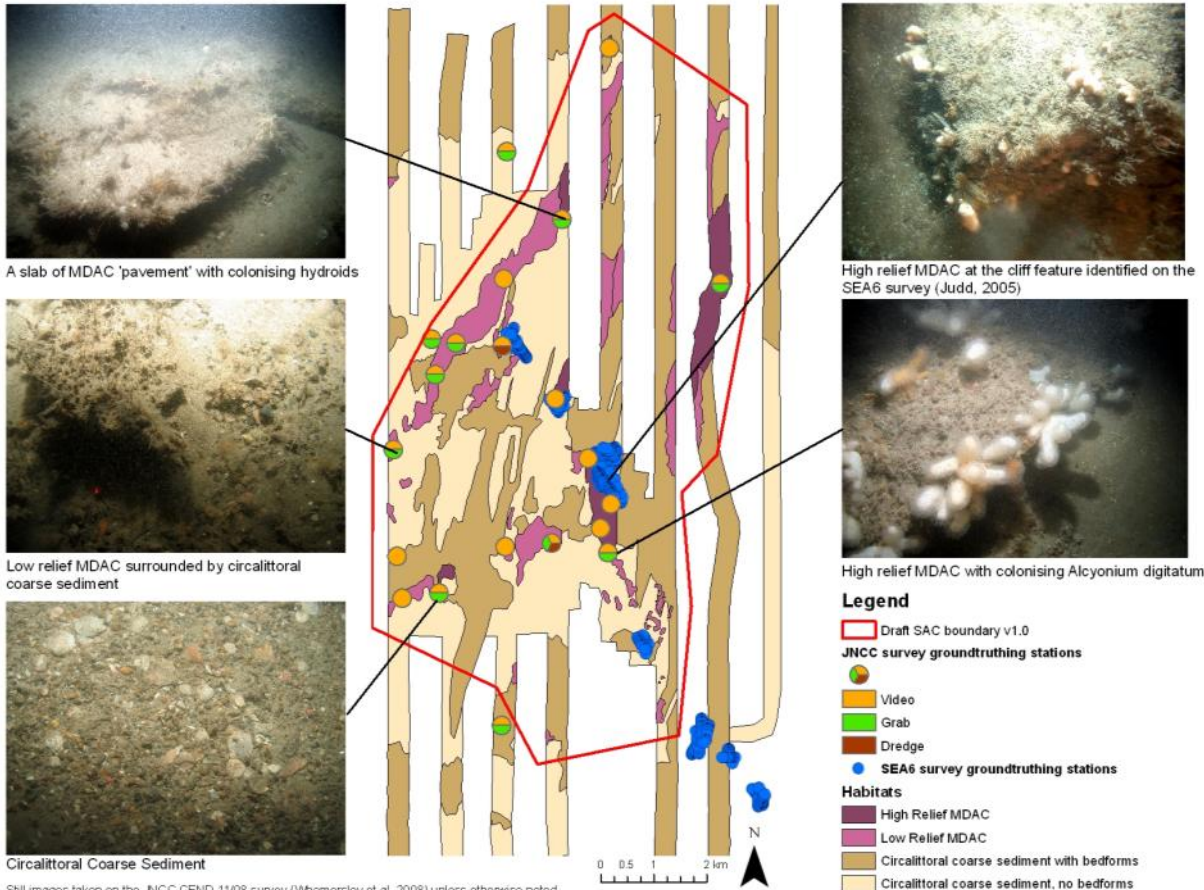


Still images taken on the SEA 6 (Judd, 2004) survey, showing the stony (A & B) and bedrock (C & D) reef habitat recorded on the outcropping rocky reef.

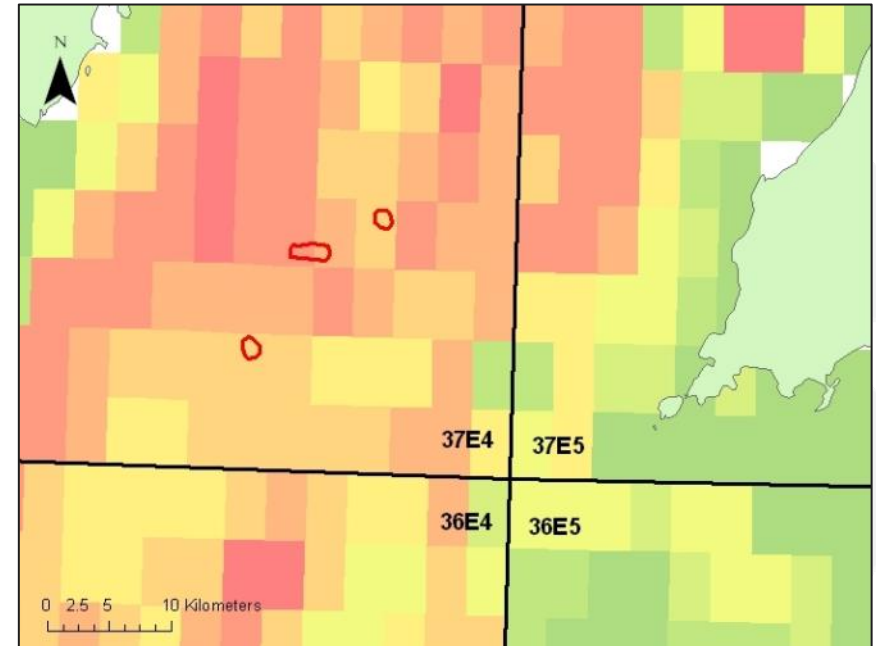
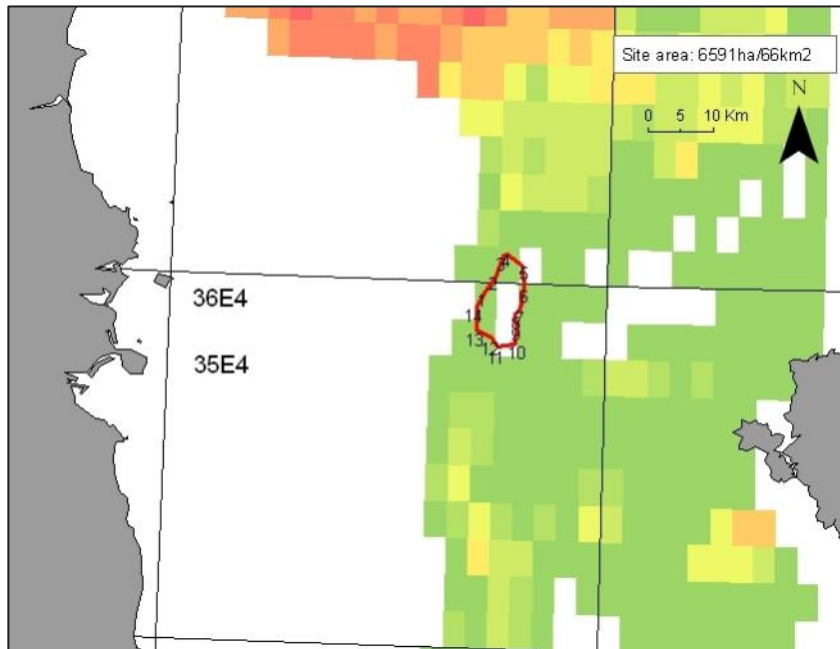


Croker Carbonate Slabs

- Biological sampling points
 - Videos
 - Grabs
 - Dredge



Fisheries activity



Timetable for reporting on the consultation (approximate)

- 12 week consultation aiming to start in May and close in August 2011
- Sept-Oct 2011 JNCC assess responses, update impact assessment, prepare report
- End of 2011, report to UK Government
- Early 2012 submit SACs to European Commission
- 2012 onwards – complete Conservation Objectives for the site and develop advice on management measures needed