

# NWWRAC Nephrops Focus Group

Edinburgh 3 November 2009

# Nephrops Proposals for 2010

## Area VII - Sequence of Events

- **2010 Advice ICES – 50% proposed cut in TAC**
  - Serious problems with choice of F 0.1
  - ACOM overrules Expert Advice
  - F0.1 vs Fmax – balance of risk
- **Industry Proposals for Porcupine Bank**
  - Spain
  - Ireland
- **Commission Non-paper**
- **Commission 2010 Proposals**

# Arbitrary Science

- F 0.1 not an appropriate proxy for MSY for Nephrops
- Inconsistent application of “consistency”
- Enormous potential economic effects disproportionate to levels of risk to stocks

# Commission Non-paper

- Procedurally unacceptable to the NWWRAC
- Inaccurate delineation of proposed closed area – Aran Grounds
- Mis-represents scientific analysis
- Ignores differential take-up of quota by different countries such that the effects of a 30% TAC reduction would have vastly different effects between countries –
- Inconsistent with Area III Commission proposal

# Management Area

- Area VII management area essential for seasonal fluctuations and flexibility for industry
- Analysis by functional unit is appropriate in setting aggregate TAC for Area VII
- Must be based on accurate and appropriate assessment and interpretation of functional areas

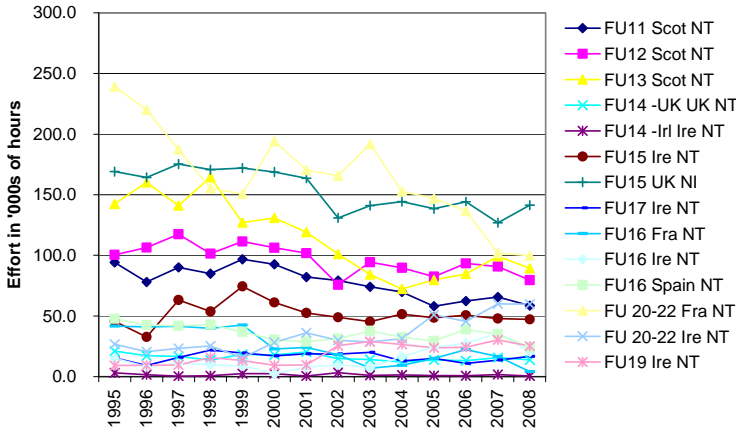
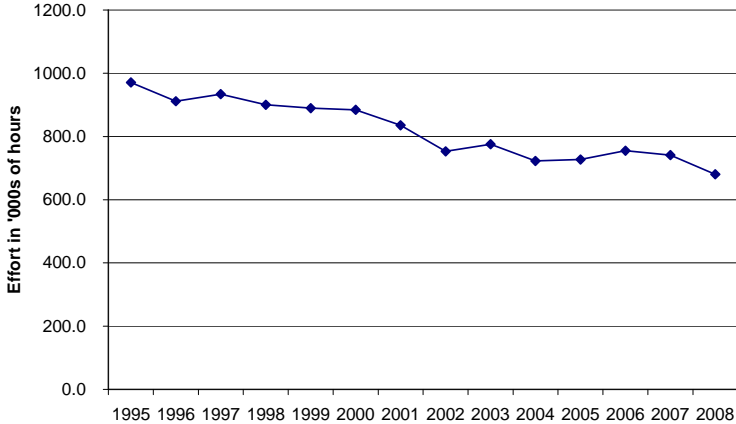
# Overview of Real Situation

- “It is important to emphasise that with the exception of FU16 (Porpcupine Bank), other stocks in VI and VII **appear to be in relatively good condition at current levels of fishing and no dramatic changes in stock status have been observed in the 2009 assessments**”

# Shift towards catching *Nephrops* in VI and VII?

- This is not the case in fact the available data from WGCSE 2009 shows a declining trend at annual average rate of -2% per year in *Nephrops* directed effort in VI and VII. **Total effort in 2008 in *Nephrops* direct fisheries is 19% below the total effort observed in 2001 when the first emergency measures were introduced for cod stocks.**

# Trends in Nephrops





# Potential effects of $F_{0.1}$

- Concerned that **fishing at  $F_{0.1}$**  for some *Nephrops* stocks, particularly those at high densities already, could result in increased density competition for food and cannibalism related mortality therefore **may not delivering the management objective of high long term yields.**

# Inadequacy of proposal

- **The proposal as it stands does not address the unequal distribution of landings across member states and functional units given the underlying relative stability constraints. It will not achieve the proposed catch adjustments by functional units.**

# How to proceed setting TAC

- Step 1 Agree stock based landings levels for 2010.
- Step 2 Calculate the change relative to landings in 2008 by Functional Unit
- Step 3 Calculate the adjusted quota for the UK and Ireland based on the distribution of landings across FU in 2008.
- Step 4 Take the lowest percentage quota change as the amount the overall TAC should be adjusted.

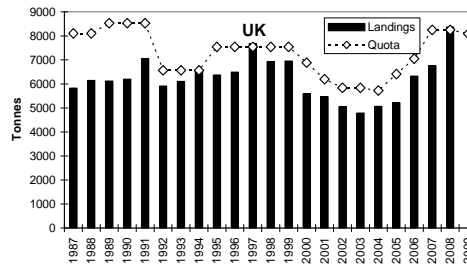
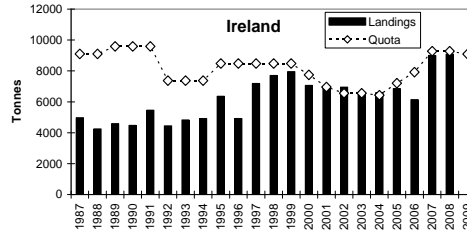
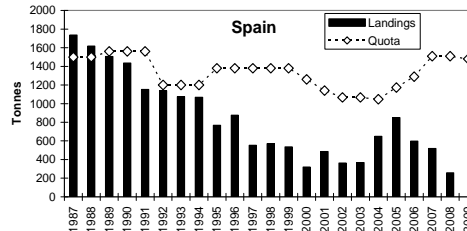
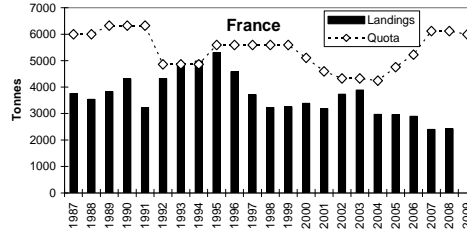
- ICES is in the process of revisiting the advice for FU 15 and FU17 based on new survey information which shows the FU 15 stock has increased by 8% in 2009 and the FU 17 stock has increased by 39% in 2009. Applying a 15% reduction to the new predicted landings in those areas would result in an 11% overall reductions in the VII TAC for 2010

# Outline of alternative approach

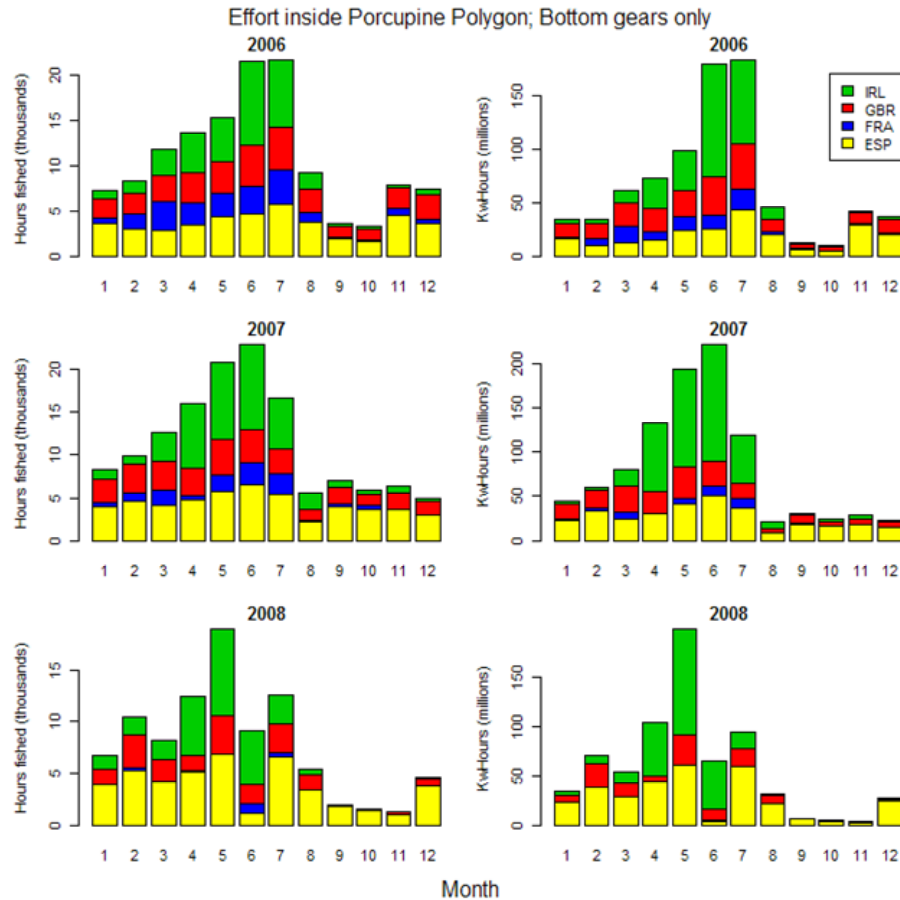
**Table 3:** Calculation of TAC adjustment for VII taking into account quota uptake, new 2009 UWTV survey information for FU15 and 17 and the Non-papers proposals for other Functional Units

Ground	Predicted catch 2010 based on F2008	Catch in 2010	Basis	Catch in 2010 /Landings 2008	IRL landings by FU 2008	Adjusted according to Catch 2010	UK landings by FU 2008	Adjusted according to Catch 2010
Irish Sea East (FU14)		<1.0	As proposed	1.4	29	40	698	961
Irish Sea West (FU15)	11.335	9.6	Pred * 0.85	0.9	3,139	2,876	7,373	6,756
Porcupine Bank (FU16)		0.0	As proposed	0.0	561	-	41	-
Aran Grounds (FU17)	1.464	1.2	Pred * 0.85	1.2	1,050	1,244	-	-
Ireland SW and SE Coast (FU19)		< 0.8	As proposed	0.9	805	743	15	14
Celtic Sea (FU20-22)		< 5.3	As proposed	0.9	3,422	3,017	242	213
Other rectangles		< 0.2	As proposed	2.0	76	151	4	7
					Sum Of Catch	8,072		7,952
					Change Relative to 2008 Quota	-11%		-12%

# Landings / Quotas Analysis by Country



# Seasonal Closure with Maximum Effect – and Significant Pain!!



# Dealing with Porcupine Bank issues

- Spanish Proposal
- Irish Proposal
- Need for consistency of approach as in previous approaches for Nephrops in other areas



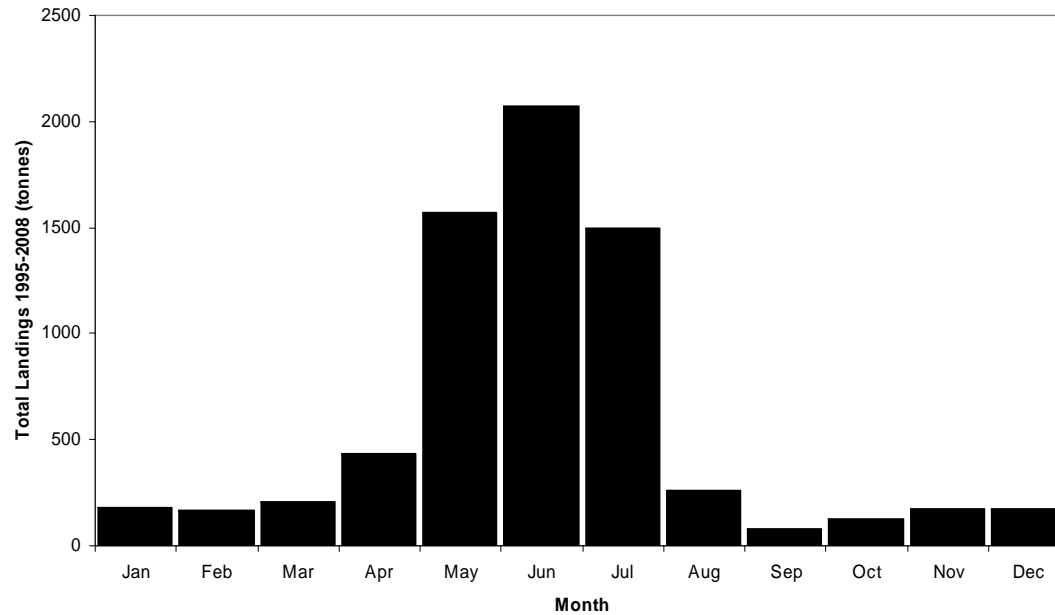
# Summary of Irish Proposal I

- An area for closure can be easily defined
- The months suggested by FIF, May, June and July coincide with peak landings and effort in the *Nephrops* directed fishery.
- The majority of the impact of closing the area for the three month will be to *Nephrops* directed otter trawlers (effort by other gears is minimal).

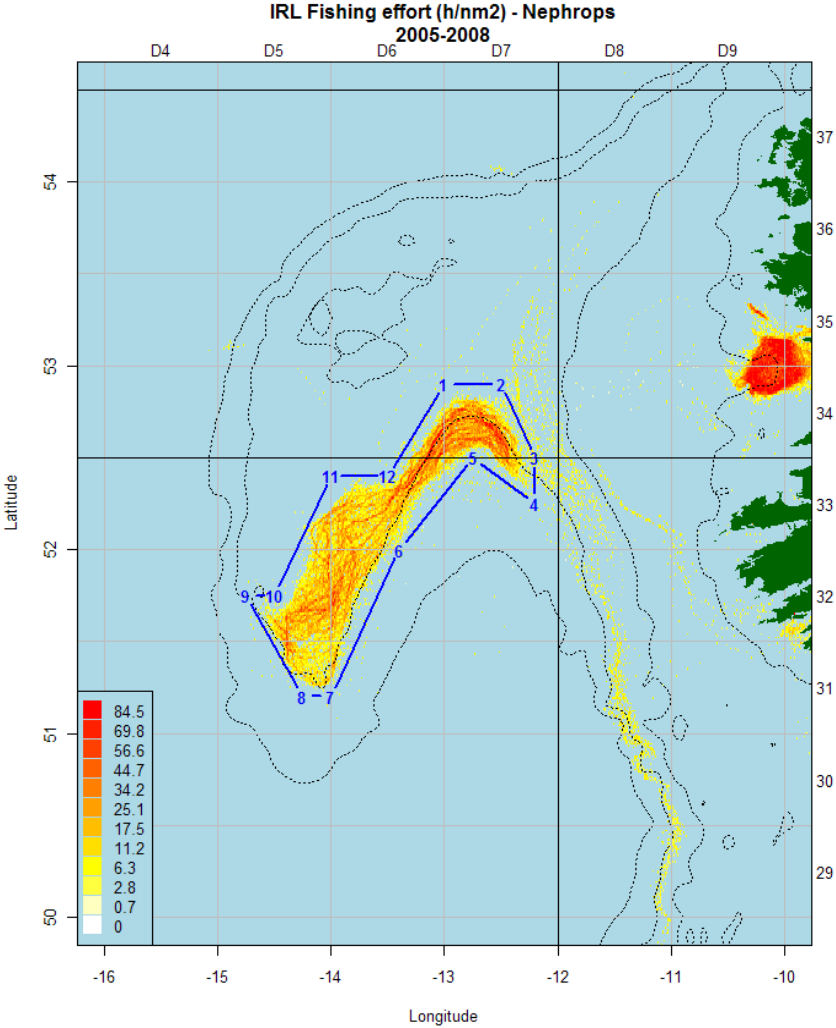
# Summary of Irish Proposal II

- The closure will mainly impact on Irish, French, UK and Spanish vessels.
- Seasonal closures have been introduced in other *Nephrops* fisheries as a management tool.
- The closure could deliver fishing mortality reductions in the order of 70%.

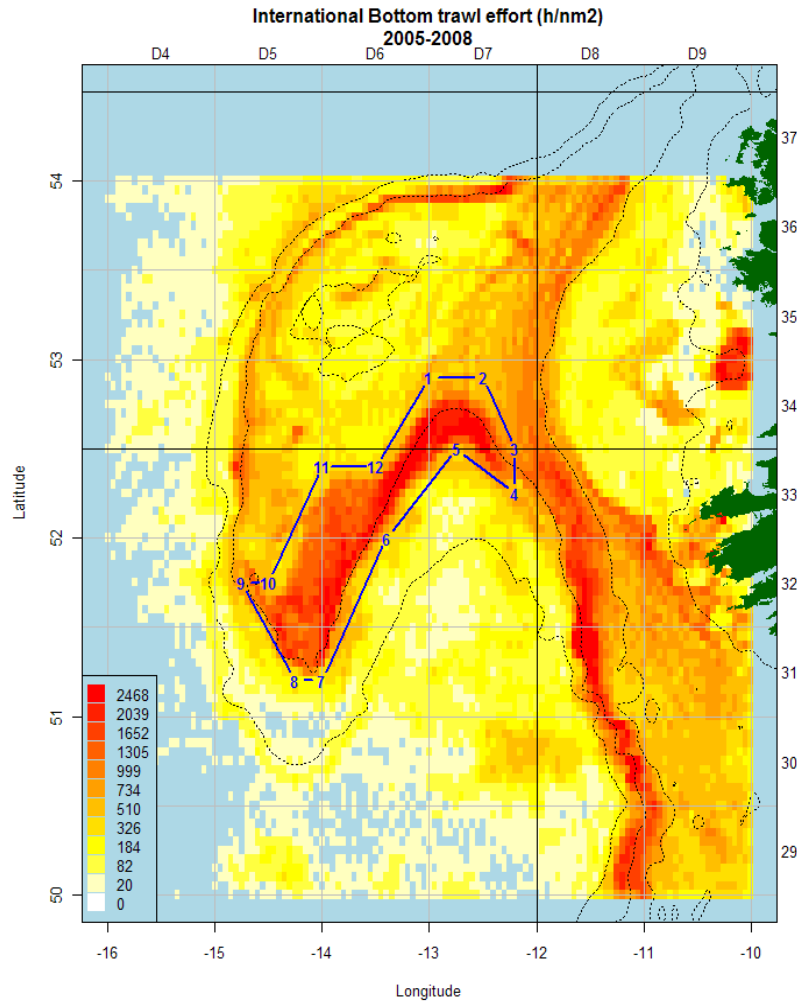
# Monthly Distribution of Irish Landings – Proposed Closed Area



# Proposed Closed Area – IRL effort



# Proposed Closed Area – international effort combined



# Need for Scientific Monitoring

- Any closure must be accompanied by improved scientific information to monitor the impact of the measure.

# NWWRAC Work

- Arrive at consensus view
  - TAC setting
  - Closed area
  - Closure period
- Submit view to STECF immediately