



ICES advice for 2009

North western waters

Presented at: North Western RAC, Madrid, 3-4 July 2008

Martin Pastoors
(vice-chair of ICES Advisory Committee)



[Skip intro](#)



Sustainable exploitation is the key to
fisheries management





You are looking for relevant
information on sustainable exploitation

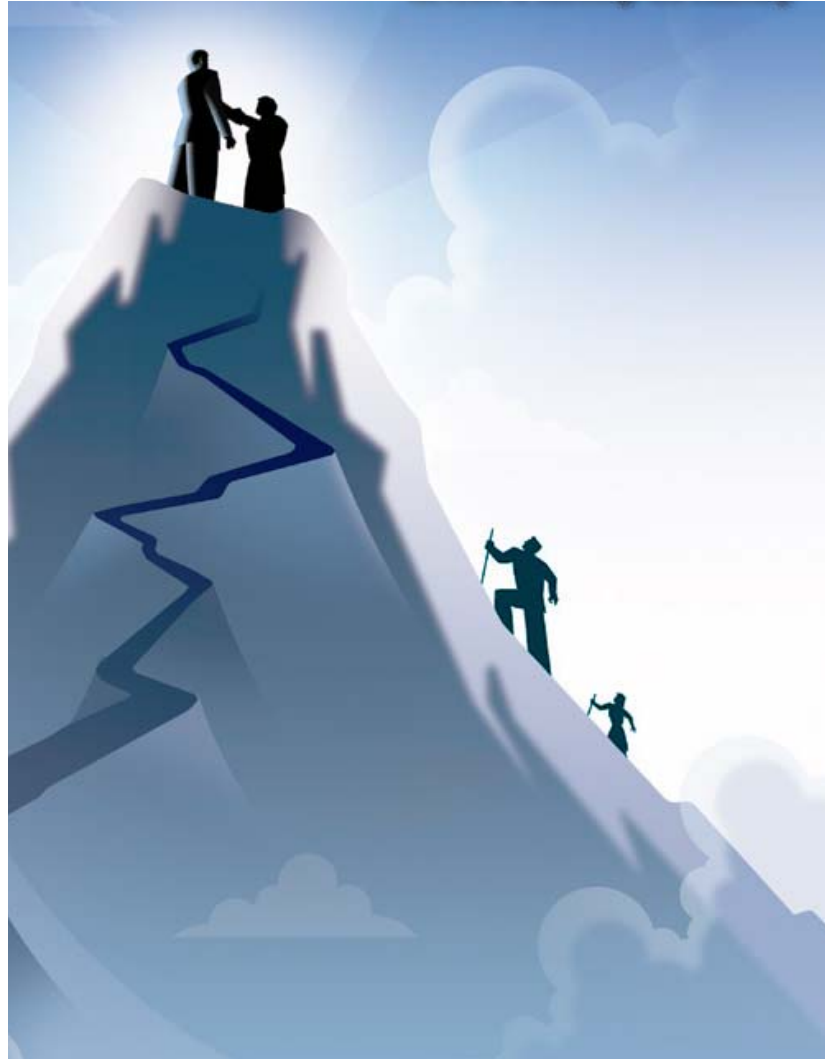


ICES has released new information on the status of ecosystems and fish





You want to be **on top**
of the new information





Review the basis and the content of the new information



How?



Big picture?



My stock?

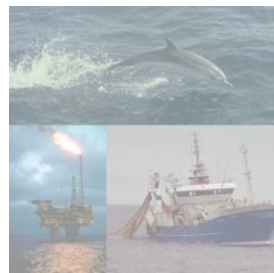
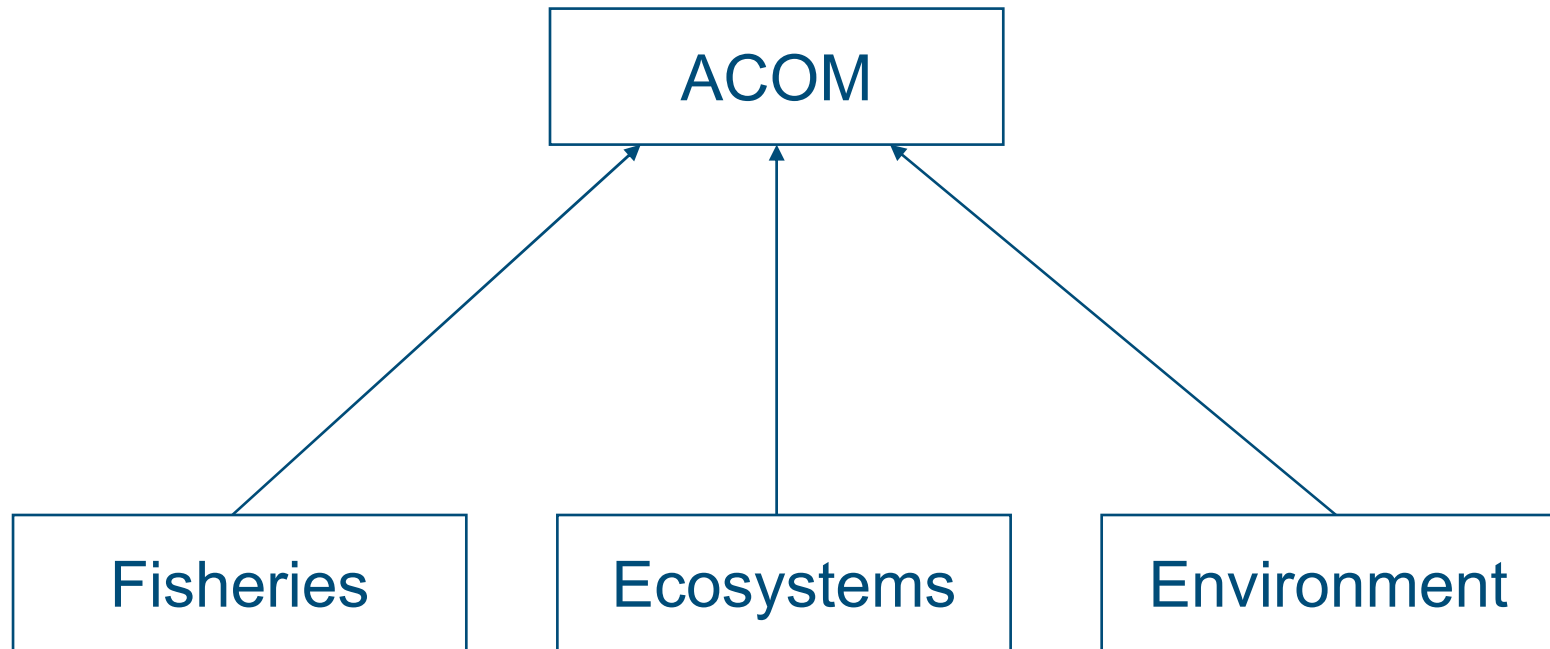


1. How did we do it?



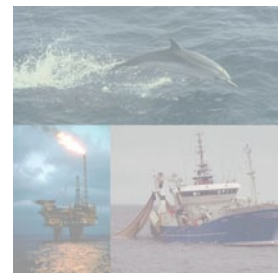


Changed to one integrated advice





New timing: advice early in the year





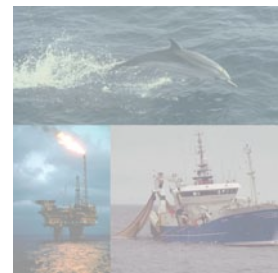
“No new advice”

cod-iris	Cod in Division VIIa (Irish Sea)
had-iris	Haddock in Division VIIa (Irish Sea)
her-nirs	Irish Sea herring (Division VIIa)
nep-7	Nephrops in Subarea VII
ple-iris	Plaice in Division VIIa (Irish Sea)
sol-iris	Sole in Division VIIa (Irish Sea)
whg-iris	Whiting in Division VIIa (Irish Sea)





Still to come: data workshops





Still to come: fisheries & ecosystem focus

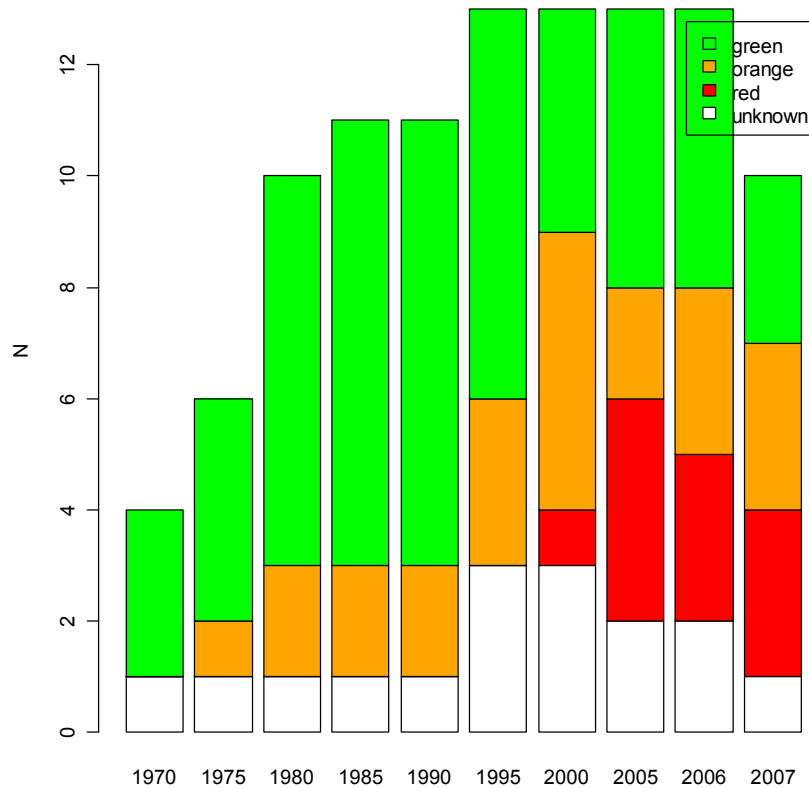


2. The big picture?

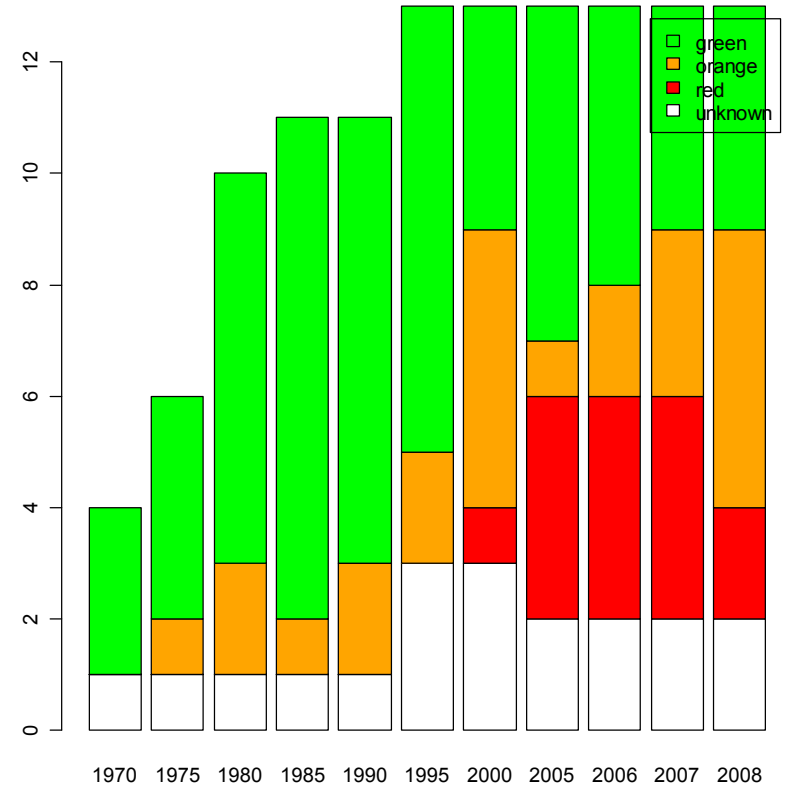




Stock status largely similar to last year



2007



2008

Number of stocks in Celtic Seas and West of Scotland relative to biomass reference points





Nephrops advice: stocks appear stable



Sharks and Rays advice: mixed message

Species	Area	State of stock	Advice
White skate	VII	Severely depleted	No fisheries
Angel shark	VII	Severely depleted	No fisheries
Common skate	VII	Depleted	No target fisheries
Greater-spotted dogfish	VII	Stable/Increasing	Status quo catch
Smooth hounds	VII	Stable/Increasing	Status quo catch
Thornback ray	VIIa,f,g	Stable/increasing	Status quo catch
Spotted ray	VIIa,f,g	Stable/increasing	Status quo catch
Cuckoo ray	VII	Uncertain	No advice
Shagreen ray	VII	Uncertain	No advice
Blonde ray	VIa, VIIa and VIIf	Uncertain	No advice



3. What happened
to my stock?

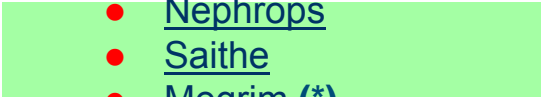




Stocks overview

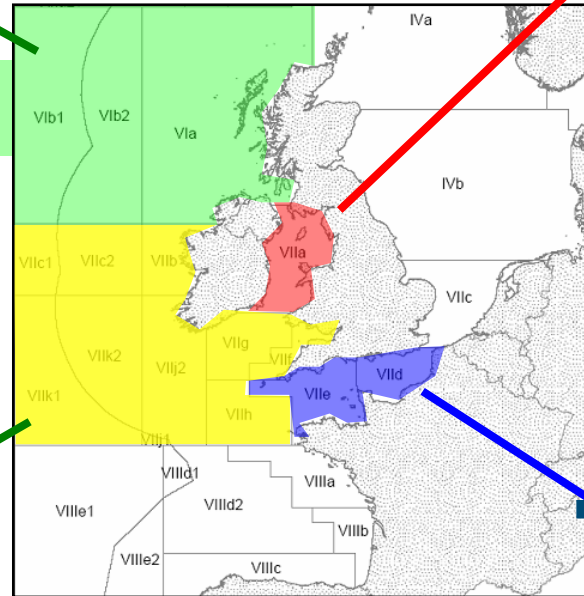
WG 1- West of Scotland

- Cod
- Haddock
- Anglerfish (*)
- Nephrops
- Saithe
- Megrim (*)
- Whiting (*)



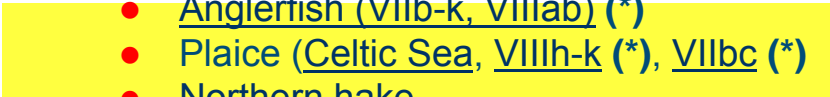
WG4 - Stocks in Irish Sea

- Cod
- Haddock
- Plaice
- Nephrops
- Sole
- Whiting (*)



WG2 - Southwest

- Cod (VIIe-k)
- Haddock (VIIb-k) (*)
- Anglerfish (VIIb-k, VIIIab) (*)
- Plaice (Celtic Sea, VIIIh-k (*), VIIbc (*)
- Northern hake
- Nephrops
- Sole (Celtic Sea, VIIh-k (*), VIIbc (*)
- Whiting (VIIe-k) (*)
- Megrim (VIIc-k, VIIIabd) (*)



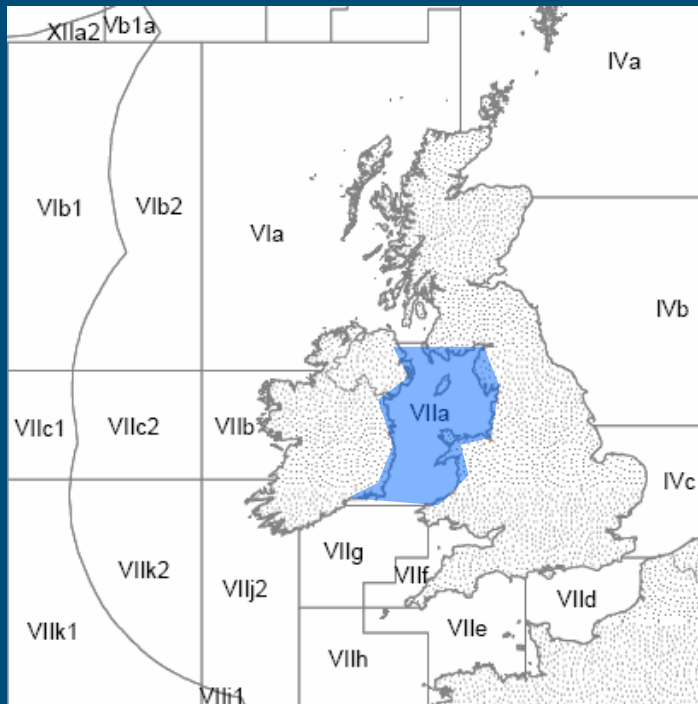
WG3 -Channel

- Plaice in VIIId (*)
- Plaice in VIIe (*)
- Sole in VIId
- Sole in VIIe
- Cod in IV, VIIId and Skagerrak



(* No new advice in 2008)

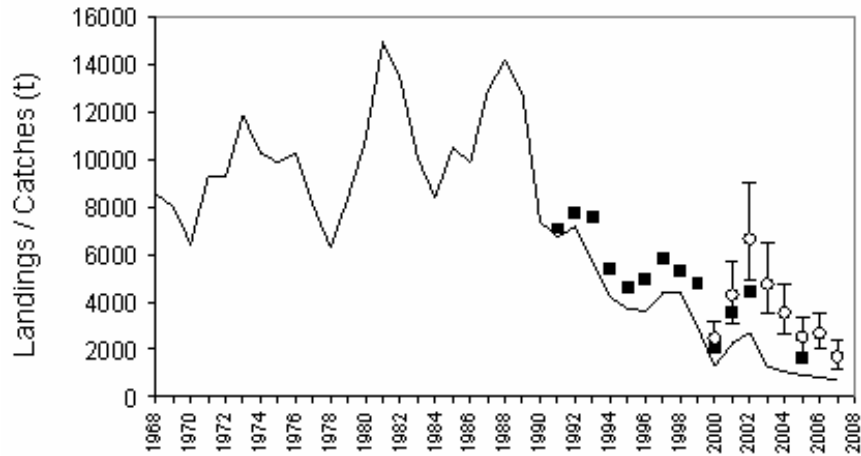
Cod in VIIa (Irish Sea)



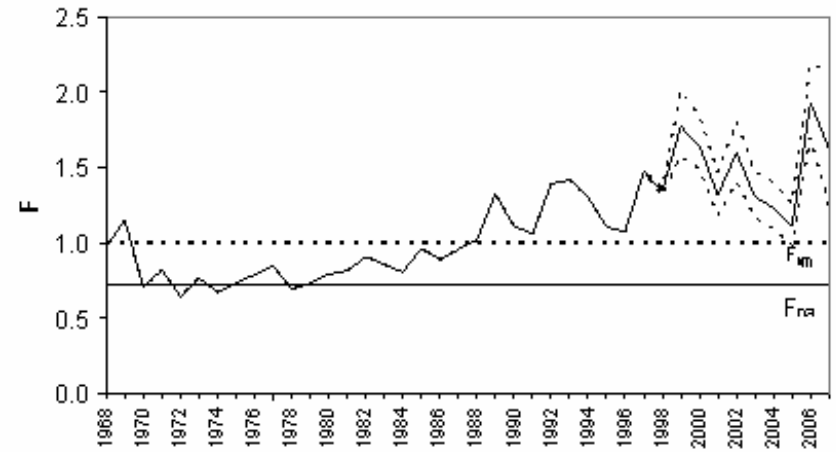


Cod in VIIa: trends

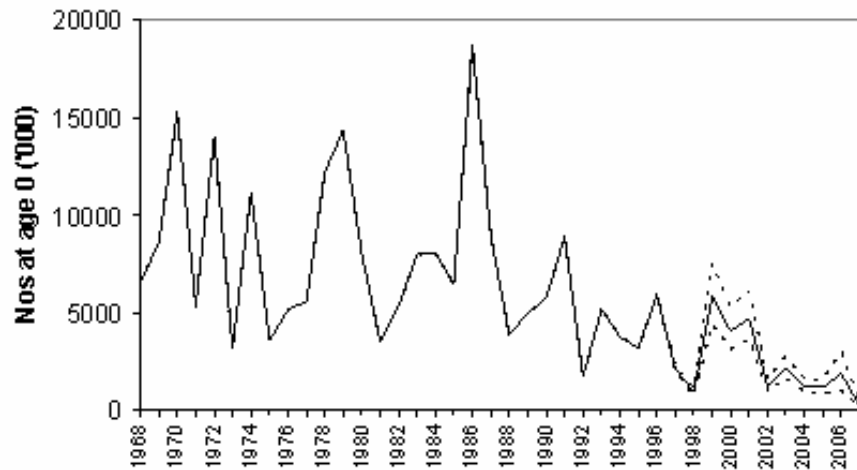
Landings / Catches



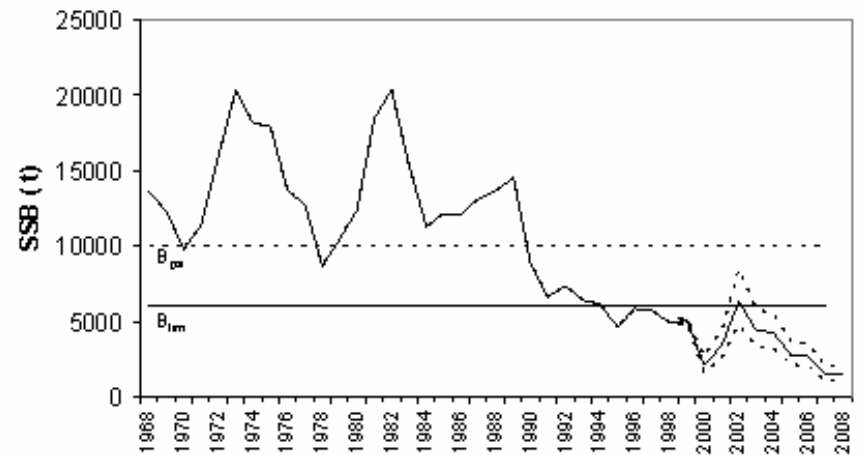
Fishing mortality (age 2-4)



Recruitment



SSB



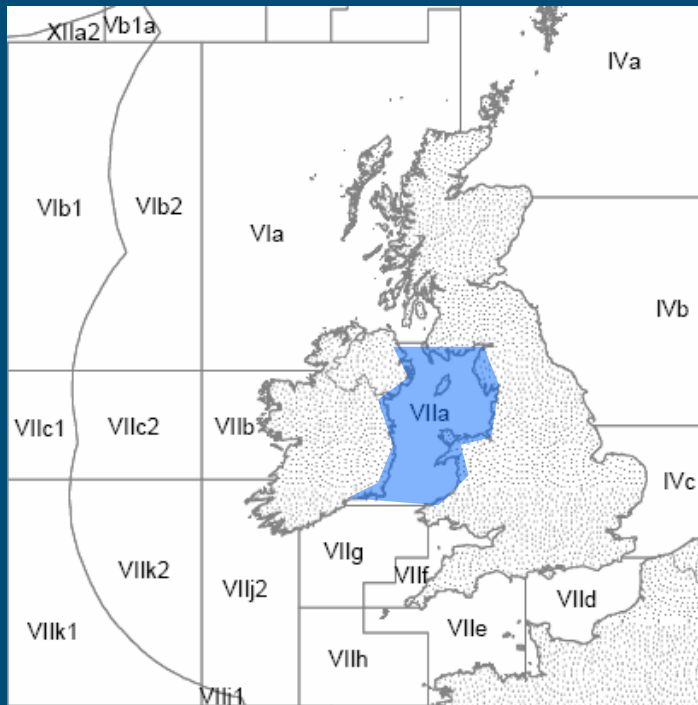


Cod in VIIa: advice

- Last year and this year
 - Low SSB and poor recruitment → zero catch



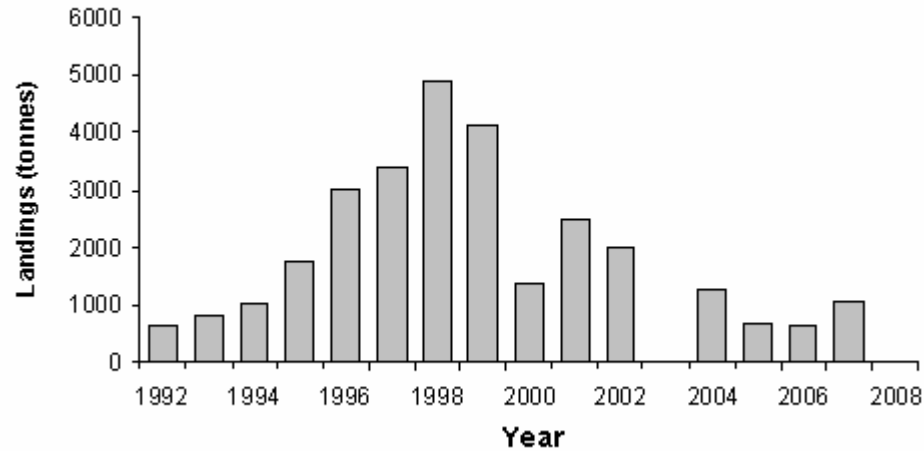
Haddock in VIIa



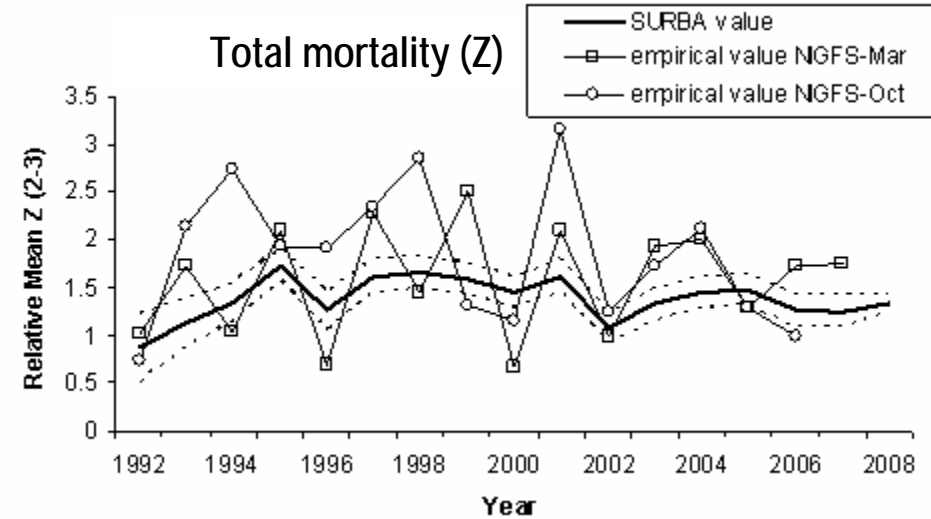
Haddock in VIIa: trends



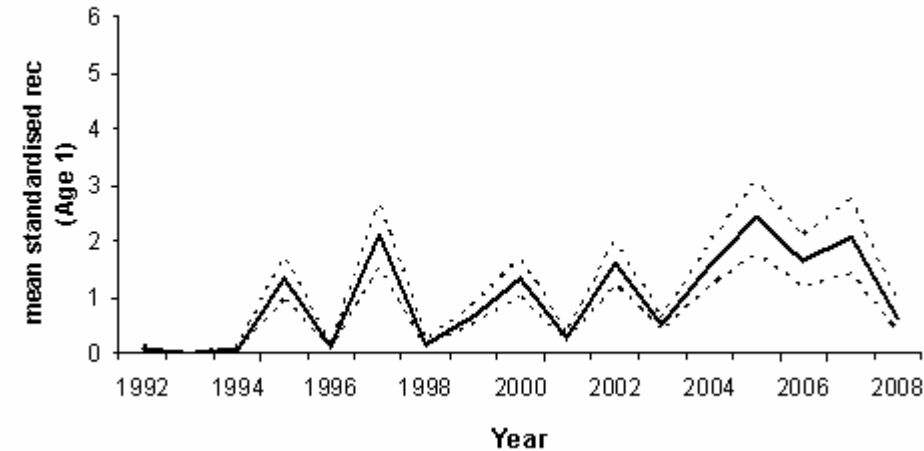
Landings



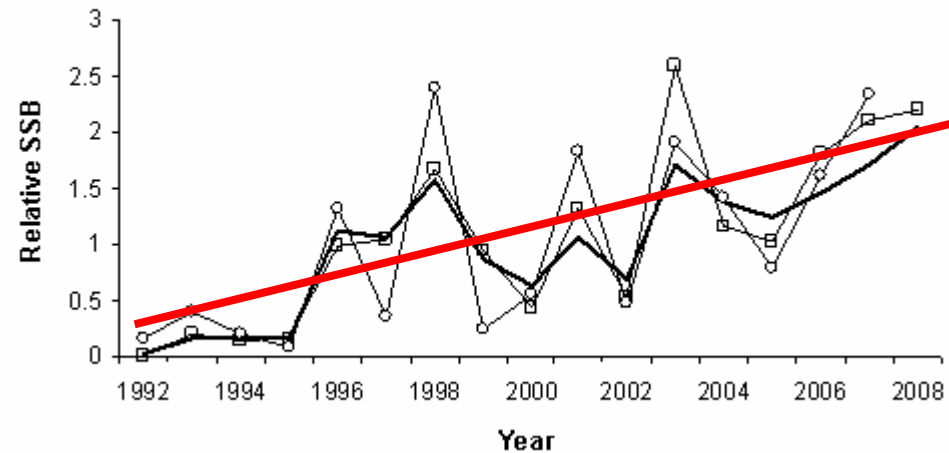
Total mortality (Z)



Recruitment (Age1)



SSB



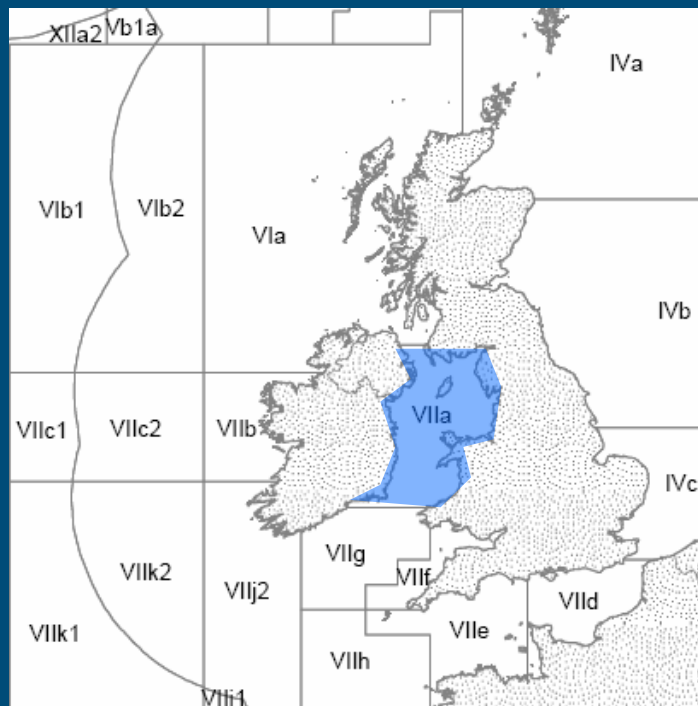


Haddock in VIIa: advice

- Last year and this year
 - SSB ~ increasing
 - recent recruitments ~ above average
 - Advice: no increase in fishing effort



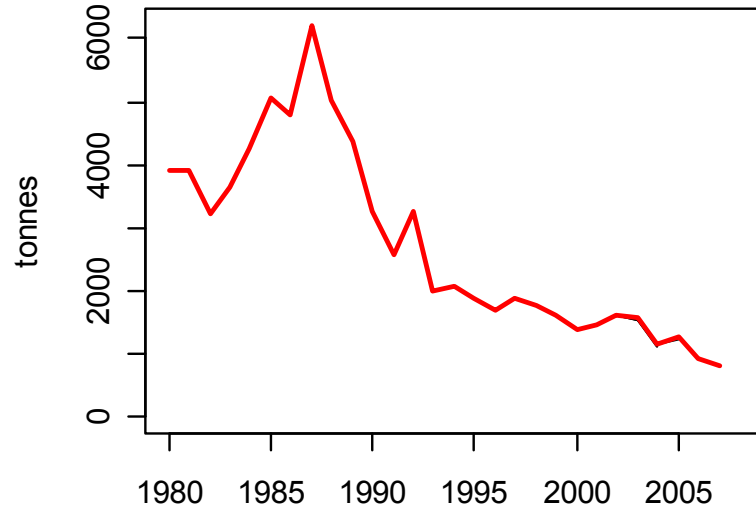
Plaice in VIIa



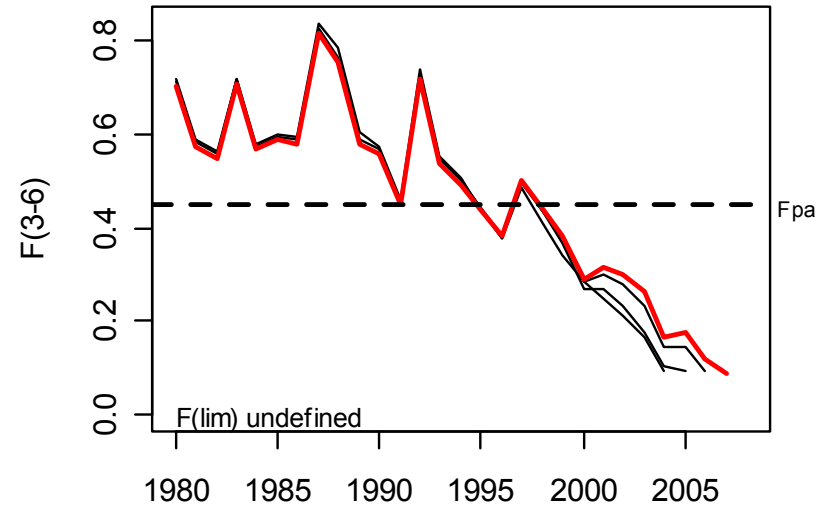


Plaice in Vlla: trends

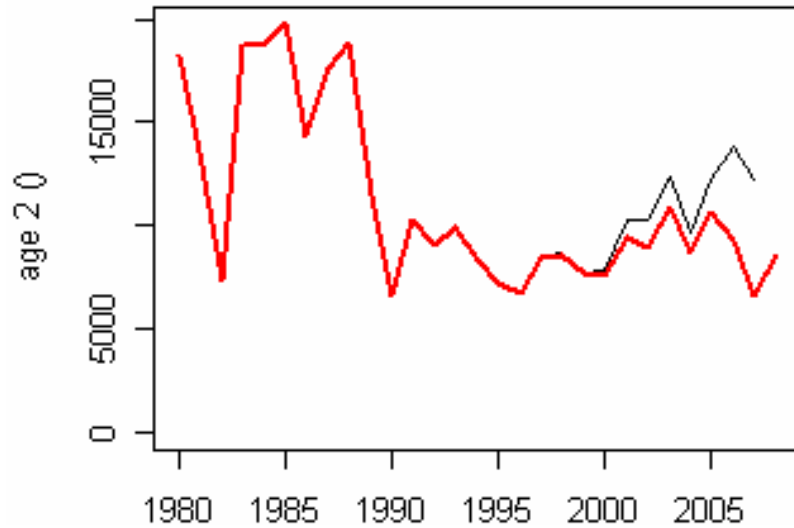
Landings



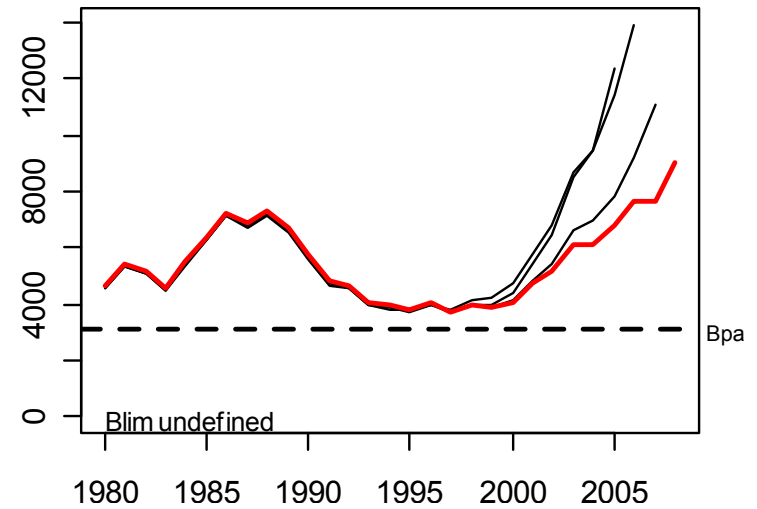
Fishing mortality



Recruitment



SSB





Plaice: advice

■ Last year

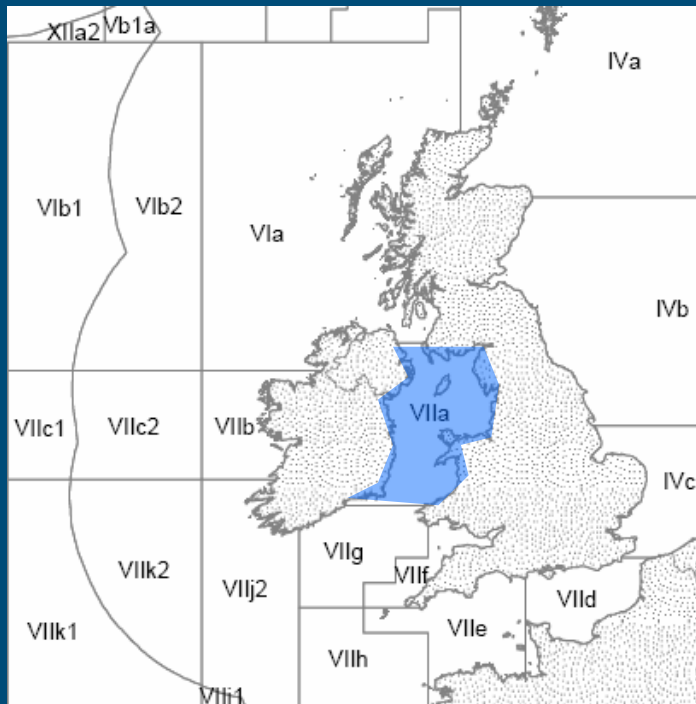
- Fishing at F_{pa} : landings $\leq 5\ 200\text{t}$
 - Note: fishing mortality 2006: 0.09
 - Note: fishing at $F_{0.1}$ (=0.13): 1 700 t

■ This year

- Stock that is well above B_{pa}
- Fishing mortality below F_{pa} and below $F_{0.1}$
- Little gain to the long-term yield by increasing F .
- Landings in 2009 $\leq 1430\text{ t}$. ($F_{0.1}$)



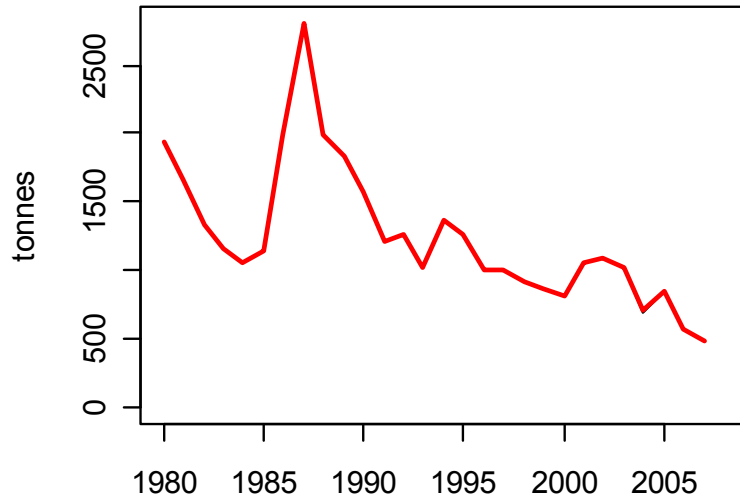
Sole VIIa



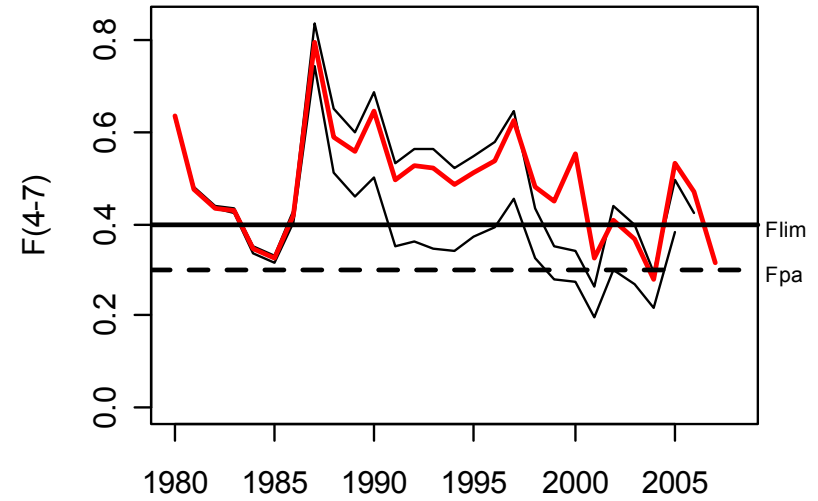


Sole in Vila: trends

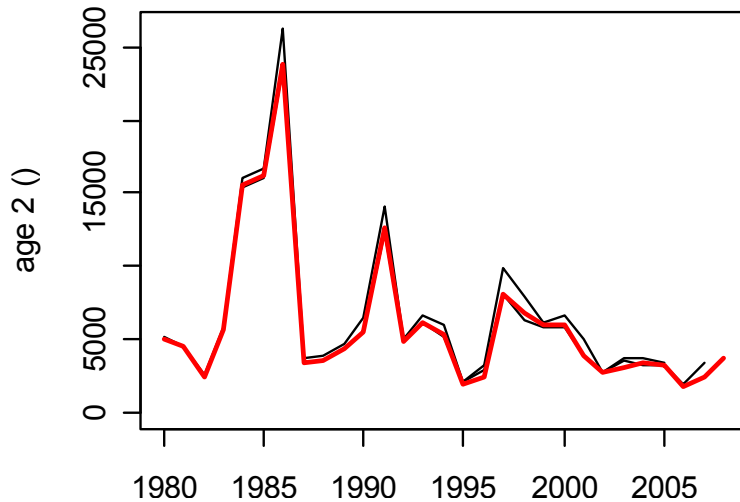
Landings



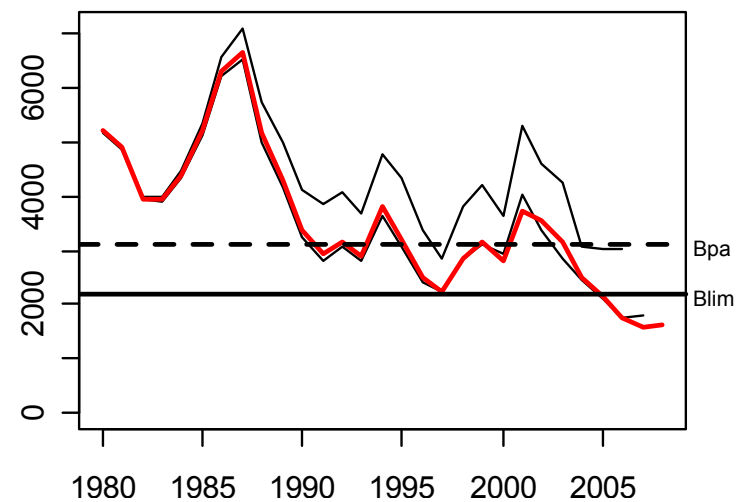
Fishing mortality



Recruitment



SSB



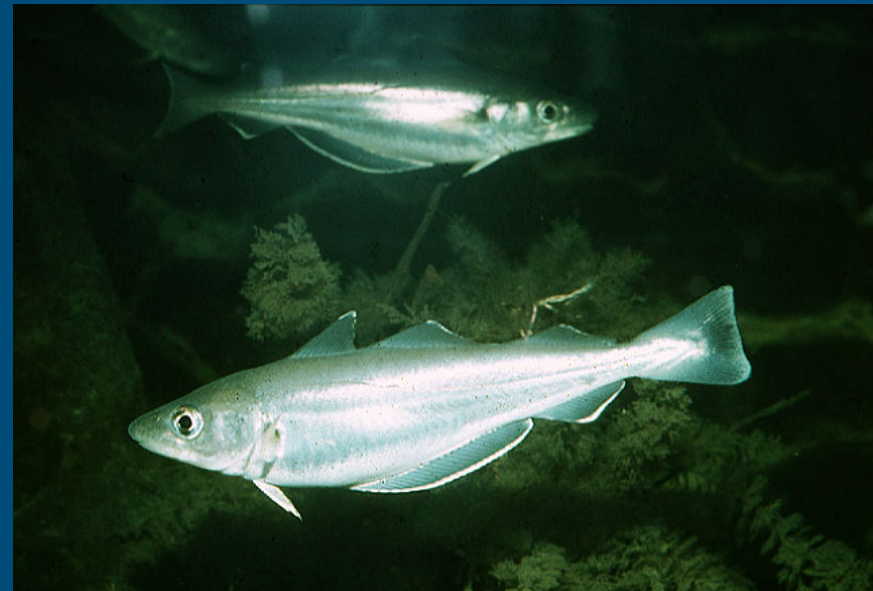
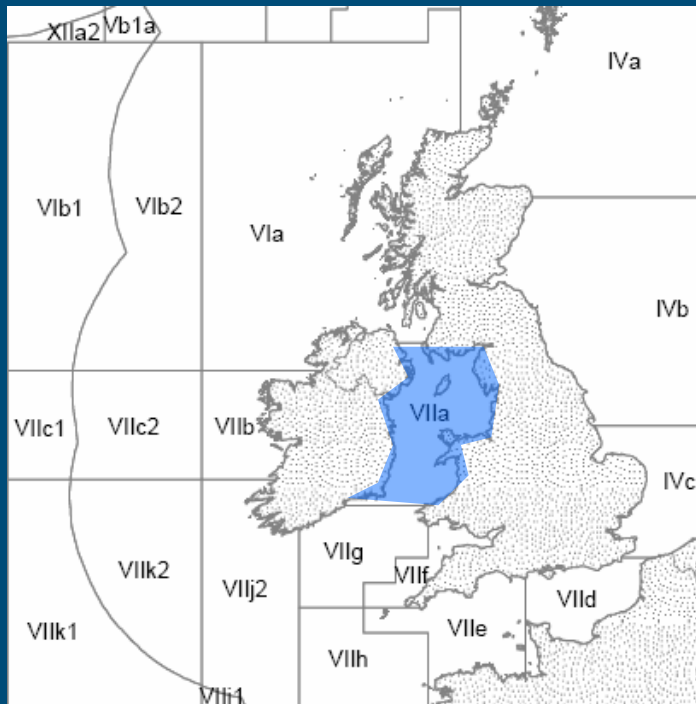


Sole in VIIa: advice

- Last year and this year
 - Low SSB and low recruitment
 - zero catch + recovery plan



Whiting VIIa



“No new advice”



Whiting VIIa

- New data do not change stock perception
- Advice same as in 2007
 - “On the basis of the stock status, ICES advises that catches of whiting [...] should be the lowest possible.”

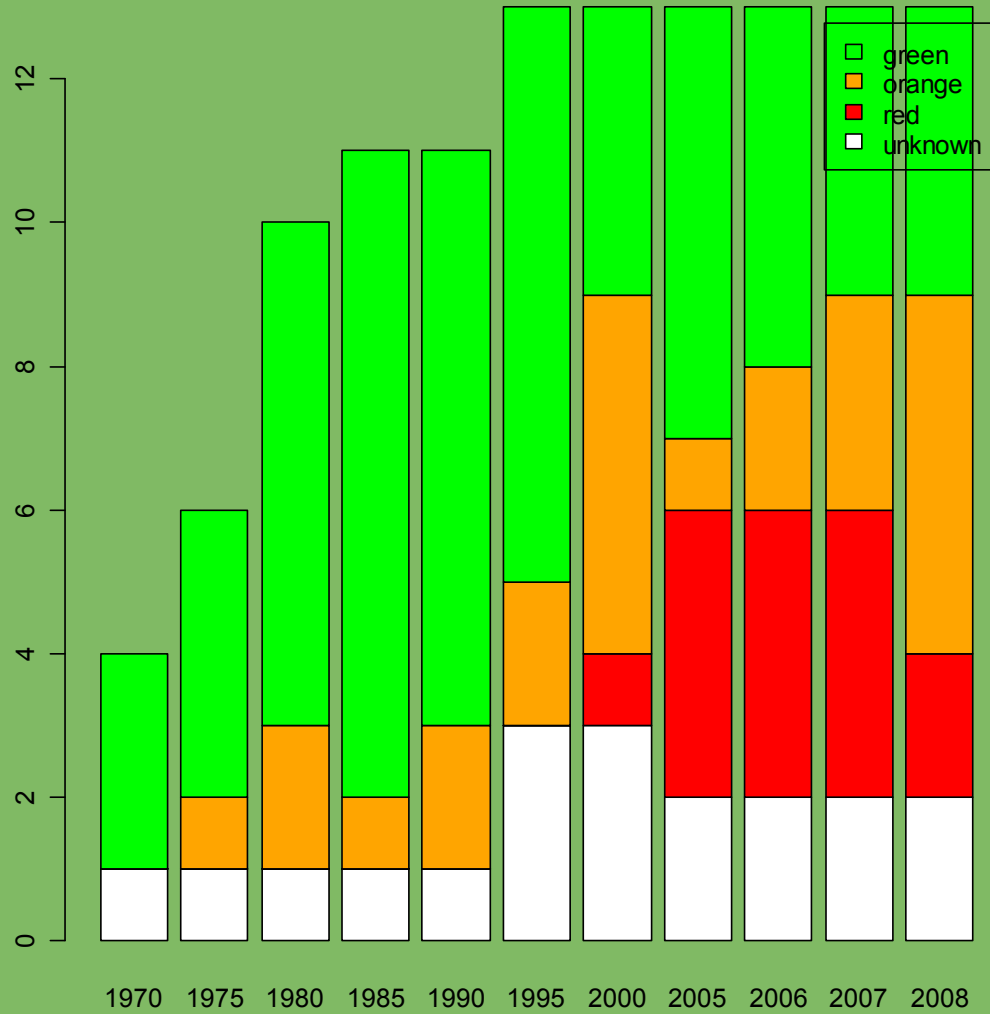


Back to the big picture?





Stock status: similar to last year





New advice on nephrops and Sharks and Rays





We are changing the advisory process



Still to come: data workshops & integration





ICES and RACs: manage the process of change

