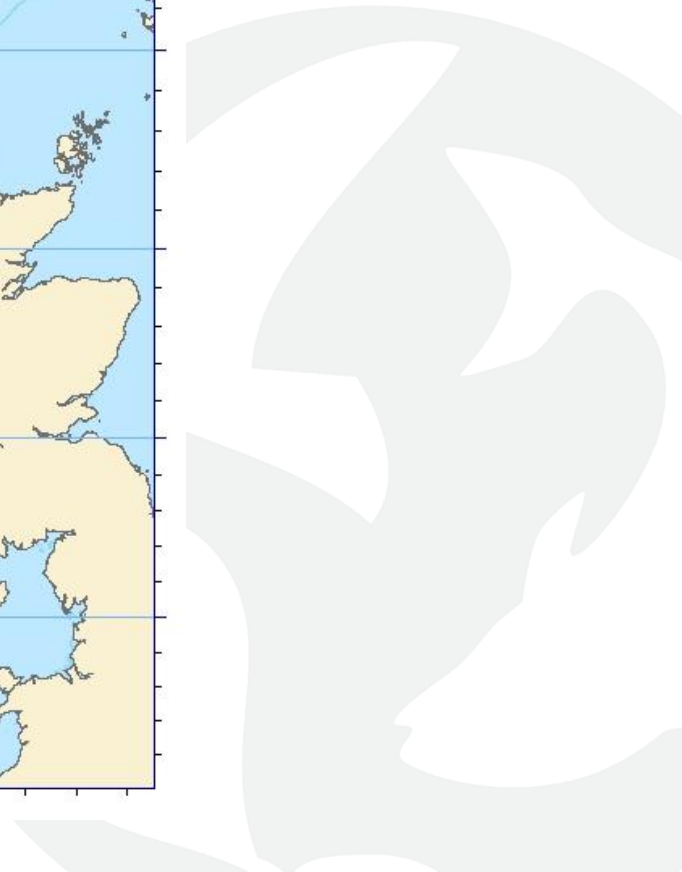
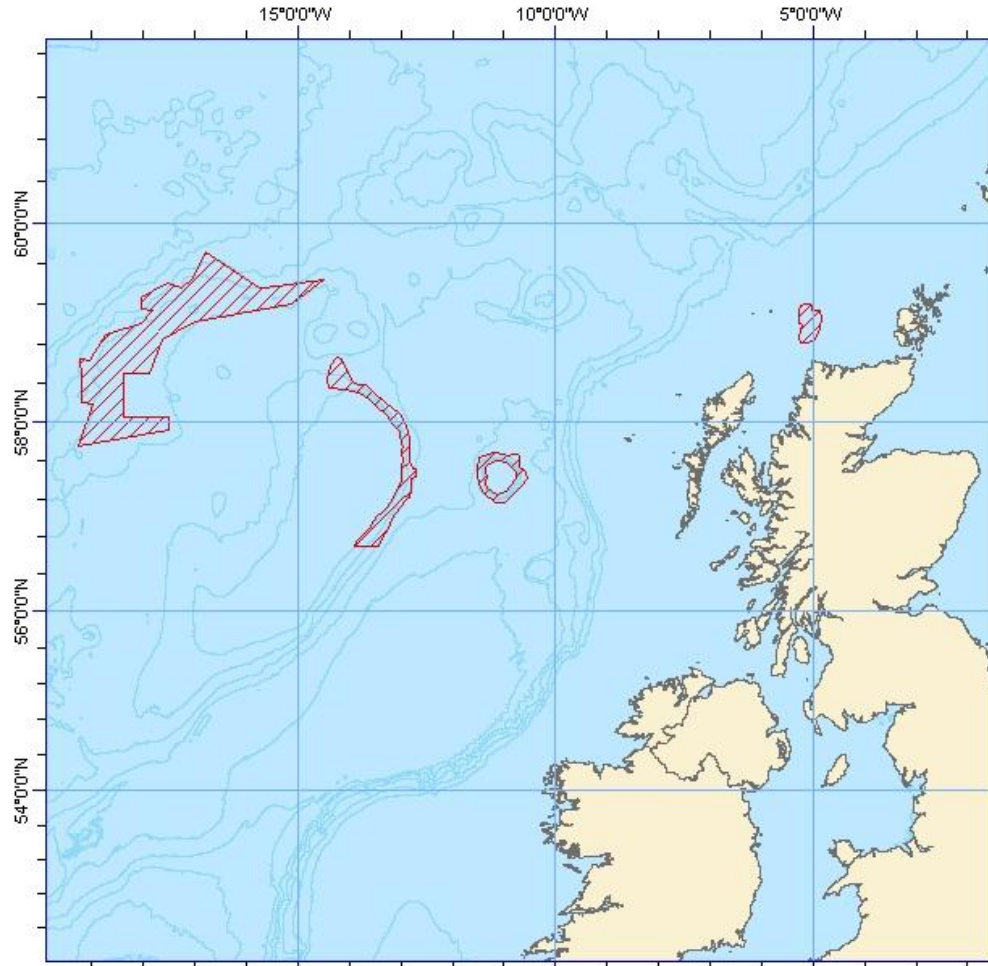


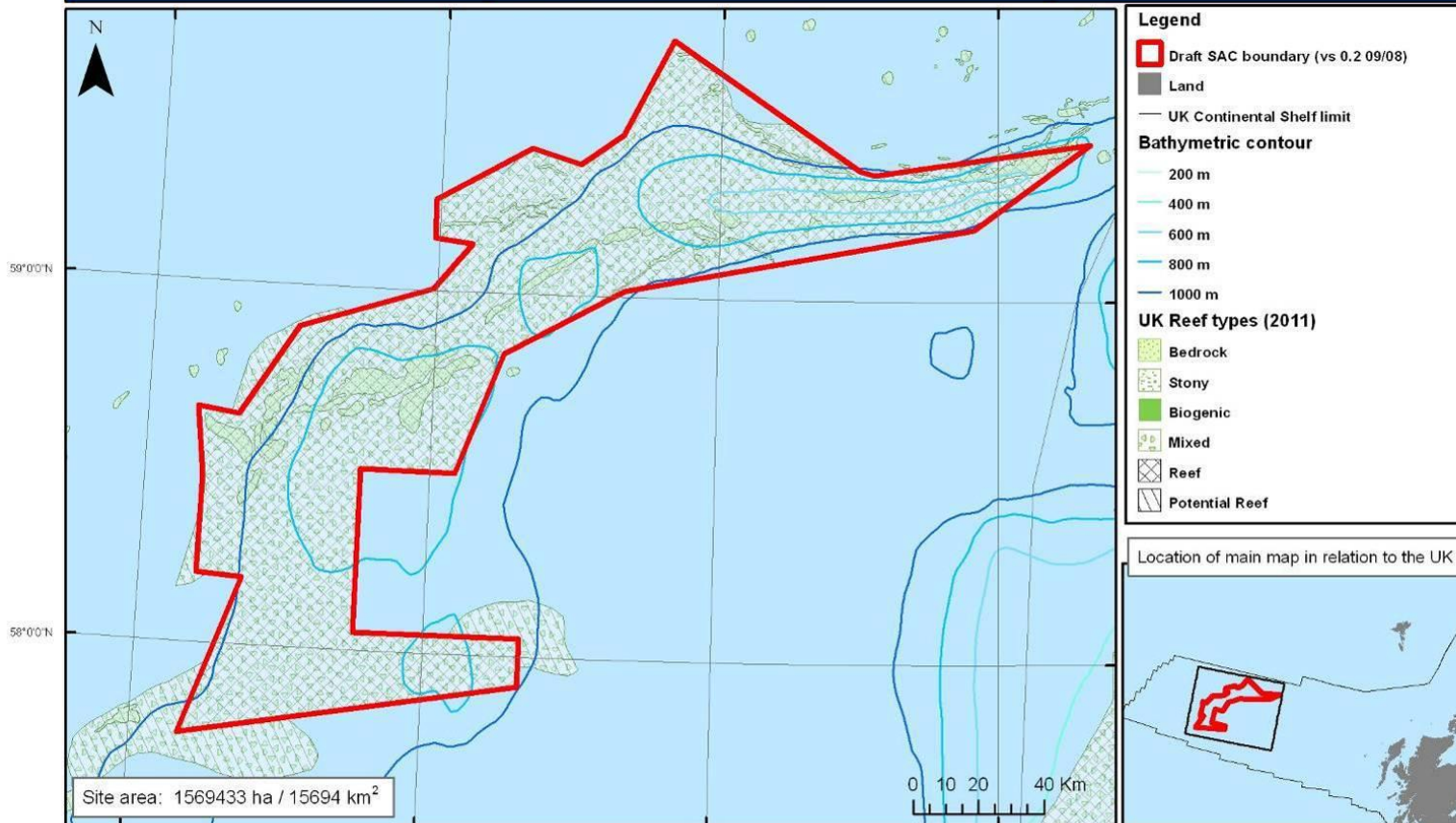


UK draft Special Areas of Conservation



Hatton Bank

Offshore Special Area of Conservation Site Map: Hatton Bank

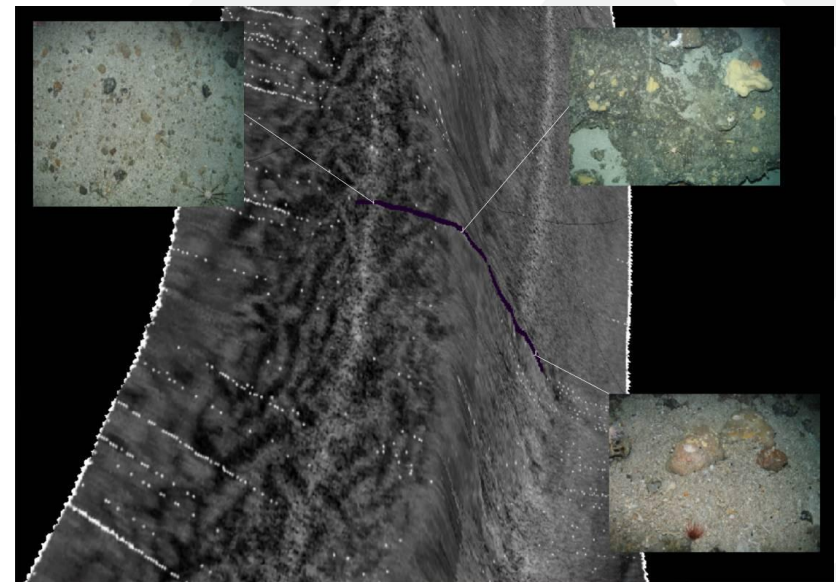
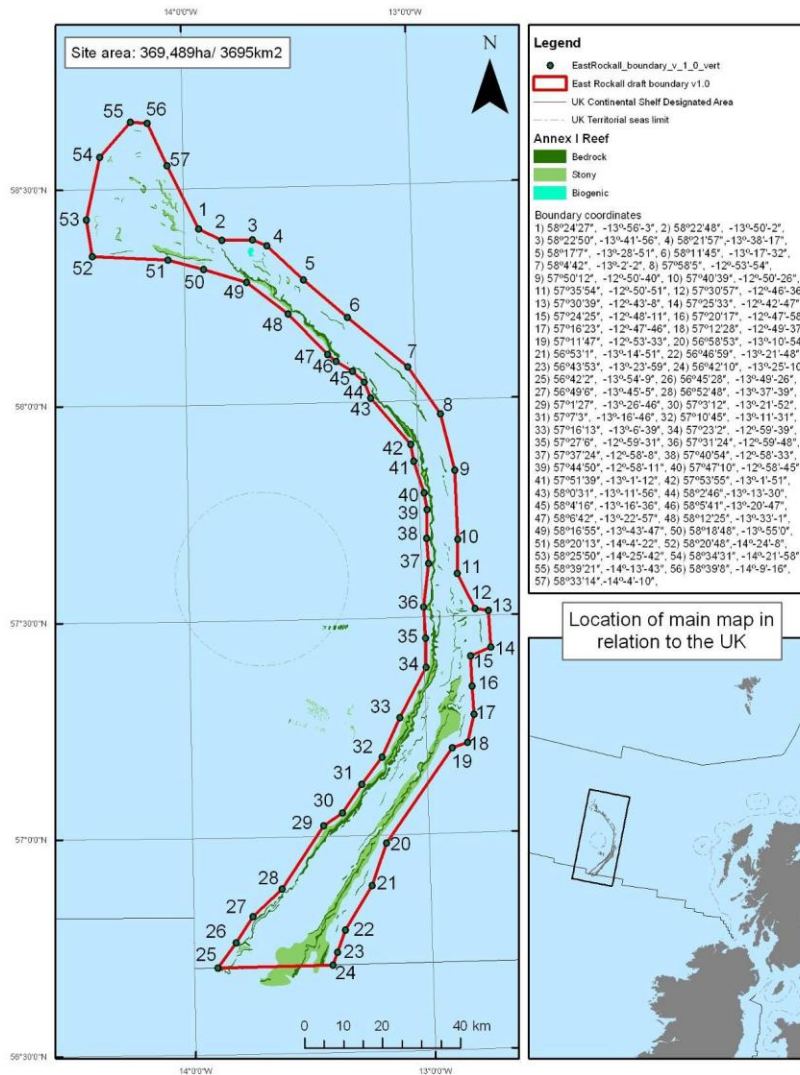


Boundary coordinates: 1) 57°45'0", -19°15'0" 2) 58°11'9", -18°57'30" 3) 58°11'34", -19°11'58" 4) 58°27'45", -19°11'39" 5) 58°39'5.4", -19°14'16" 6) 58°38'6.6", -19°01'17" 7) 58°53'8.4", -18°43'32" 8) 59°00'17", -18°01'18" 9) 59°08'0.6", -17°49'18" 10) 59°08'45", -18°01'28" 11) 59°15'9.6", -18°01'33" 12) 59°24'10", -17°31'13" 13) 59°21'46", -17°15'21" 14) 59°26'54", -17°01'39" 15) 59°42'41", -16°45'57" 16) 59°21'34", -15°44'45" 17) 59°21'0", -15°40'0" 18) 59°26'0", -14°30'0" 19) 59°12'0", -15°08'0" 20) 59°01'0", -17°00'0" 21) 58°50'0", -17°38'0" 22) 58°30'0", -17°52'0" 23) 58°30'0", -18°22'0" 24) 58°03'0", -18°22'0" 25) 58°03'0", -17°30'0" 26) 57°55'0", -17°30'0"

Map version number 1.3 (29/11/11)

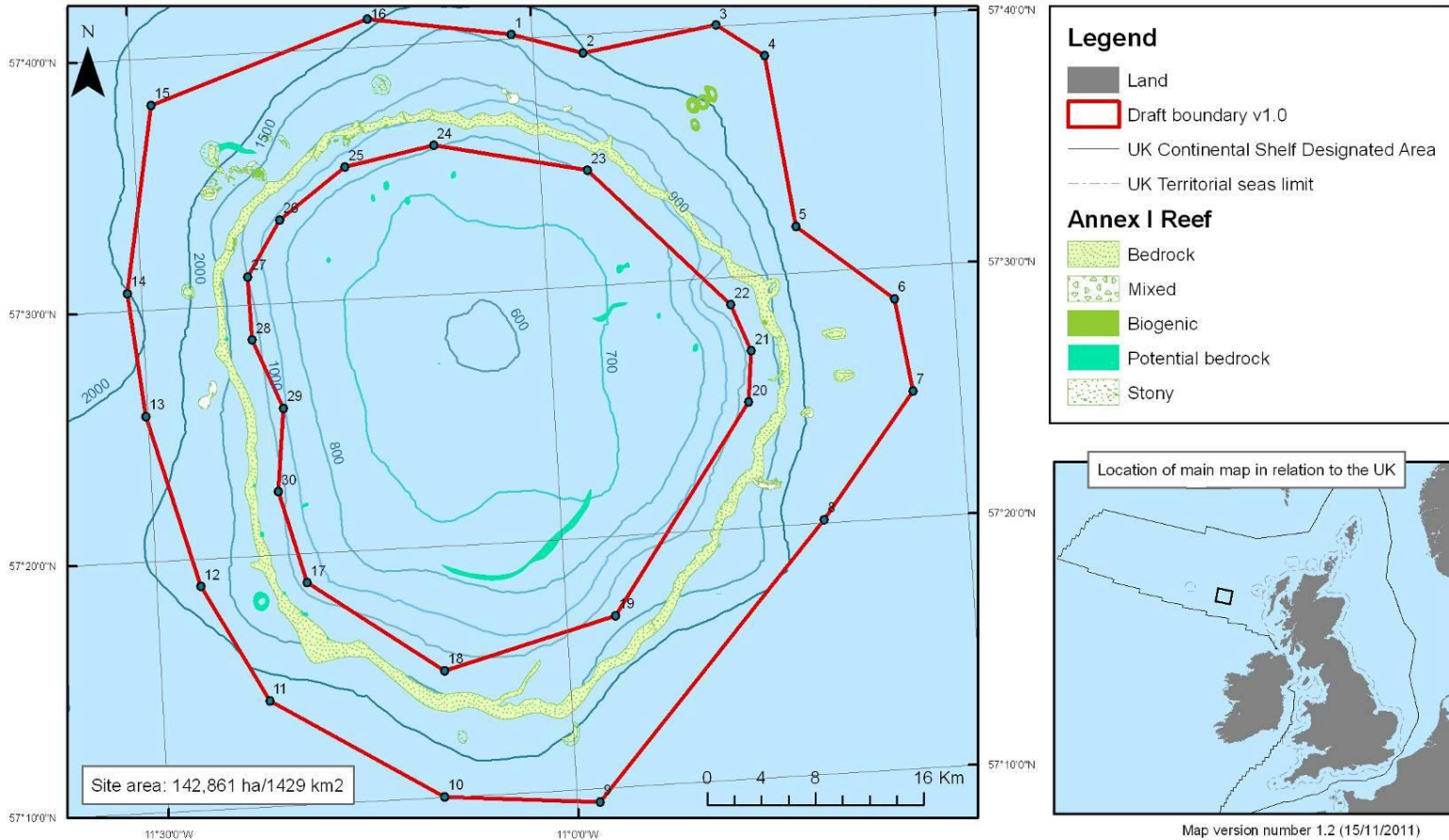
East Rockall

Offshore Special Area of Conservation Site Map: East Rockall Bank



Anton Dohrn Seamount

Offshore Special Area of Conservation Site Map: Anton Dohrn Seamount

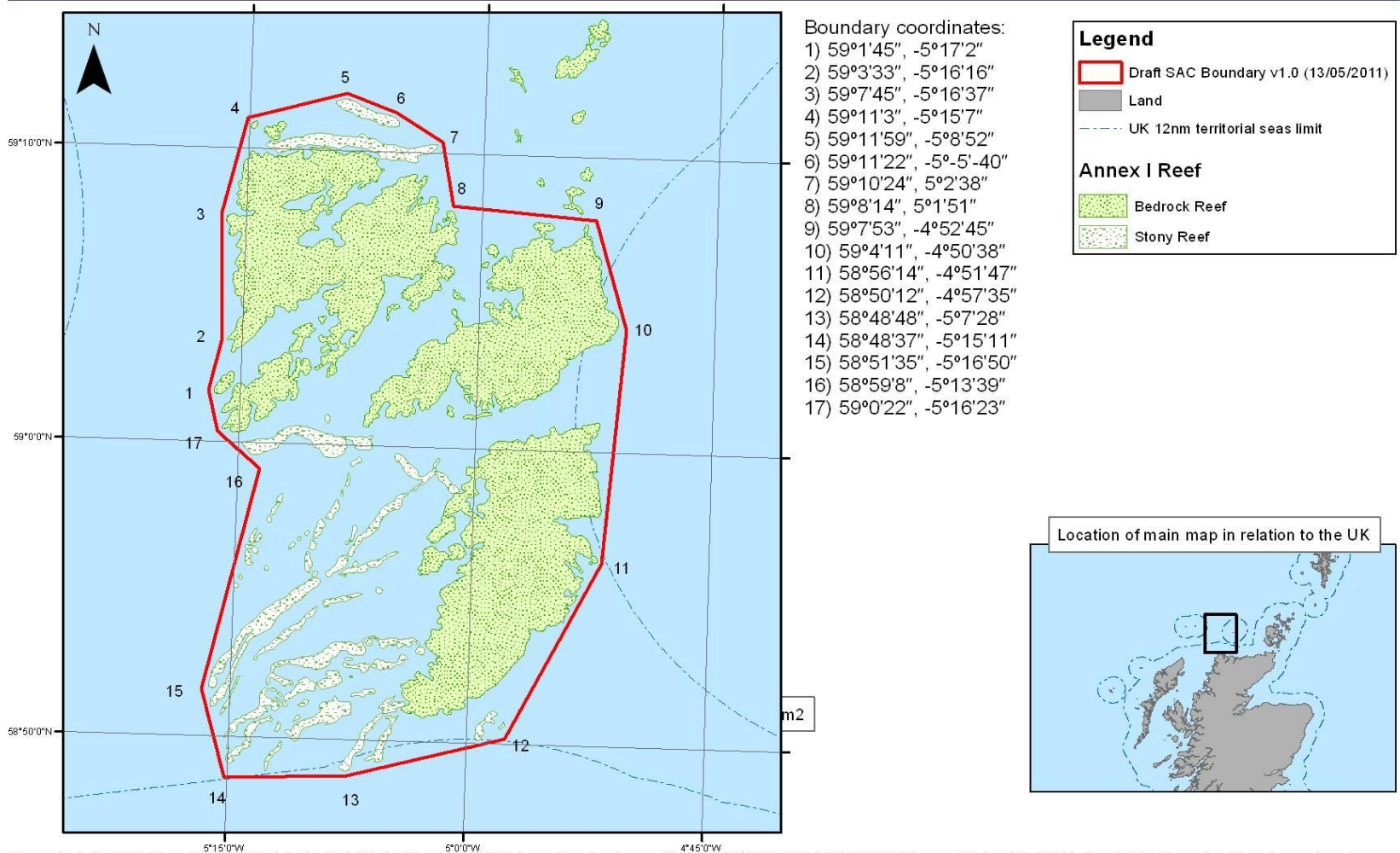


Boundary co-ordinates: *Outer boundary:* 1) 57°40'11", -11°-1'-34", 2) 57°39'18", -10°-56'-19", 3) 57°40'6", -10°-46'-19", 4) 57°38'45", -10°-42'-50", 5) 57°31'52", -10°-41'-21", 6) 57°28'45", -10°-34'-25", 7) 57°25'2", -10°-33'-28", 8) 57°20'10", -10°-40'-37", 9) 57°9'29", -10°-58'-20", 10) 57°10'2", -11°-9'-41", 11) 57°14'15", -11°-22'-7", 12) 57°18'56", -11°-26'-45", 13) 57°25'49", -11°-30'-10", 14) 57°30'44", -11°-31'-3", 15) 57°38'10", -11°-28'-34", 16) 57°41'8", -11°-12'-10". *Inner boundary:* 17) 57°18'52", -11°-18'-56", 18) 57°15'4", -11°-9'-9", 19) 57°16'51", -10°-56'-24", 20) 57°25'1", -10°-45'-37", 21) 57°27'3", -10°-45'-12", 22) 57°28'55", -10°-46'-32", 23) 57°34'37", -10°-56'-30", 24) 57°35'58", -11°-7'-48", 25) 57°35'18", -11°-14'-29", 26) 57°33'21", -11°-19'-29", 27) 57°31'9", -11°-22'-7", 28) 57°28'38", -11°-22'-1", 29) 57°25'51", -11°-19'-59", 30) 57°22'32", -11°-20'-42".

Site map projected in WGS 84 (Zone 28N). NOT TO BE USED FOR NAVIGATION. Seabed habitat data derived from BGS 1:250,000 seabed sediment maps. The exact limits of the UK Continental Shelf are set out in orders made under section 1(7) of the Continental Shelf Act 1964 (© Crown Copyright), World Vector Shoreline © US Defense Mapping Agency, GEBCO bathymetry © NERC 1994, 1997. Map copyright JNCC 2011. NJC For information on how the reef was derived please see JNCC Anton Dohrn Site Selection document, Section 11: supporting scientific documentation.

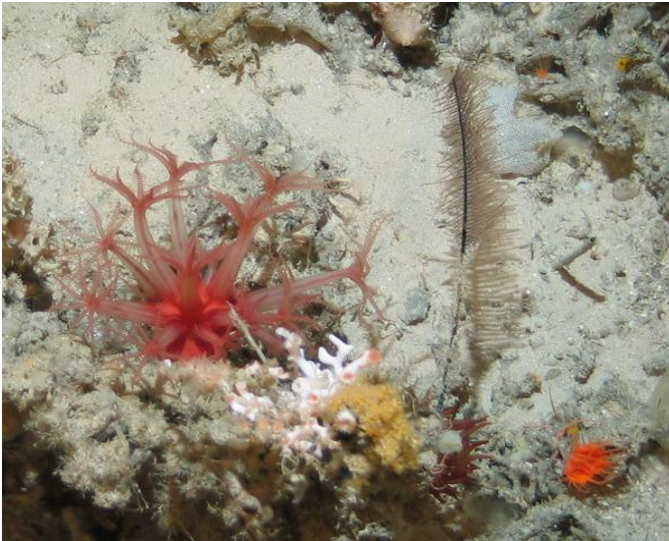
Solan Bank

Offshore Special Area of Conservation Site Map: Solan Bank Reef



Consultation

- Site assessment document
 - Scientific information used to identify the site
- Impact assessment
 - Our estimate of the cost to Government and businesses



Timetable

- Consultation starts 5 March 2012
- Duration 12 weeks
- Consultation responses may be incorporated into boundary changes.
- Government will decide whether to designate the sites
- Submission to European Commission October 2012



Further information

www.jncc.defra.gov.uk

