

**NWWAC
FOCUS GROUP
Irish Sea Technical Conservation Measures
Printworks – Dublin Castle
Thursday 17th September 2015 15:00 – 17:00**

Tom Catchpole - Cefas
thomas.catchpole@cefas.co.uk



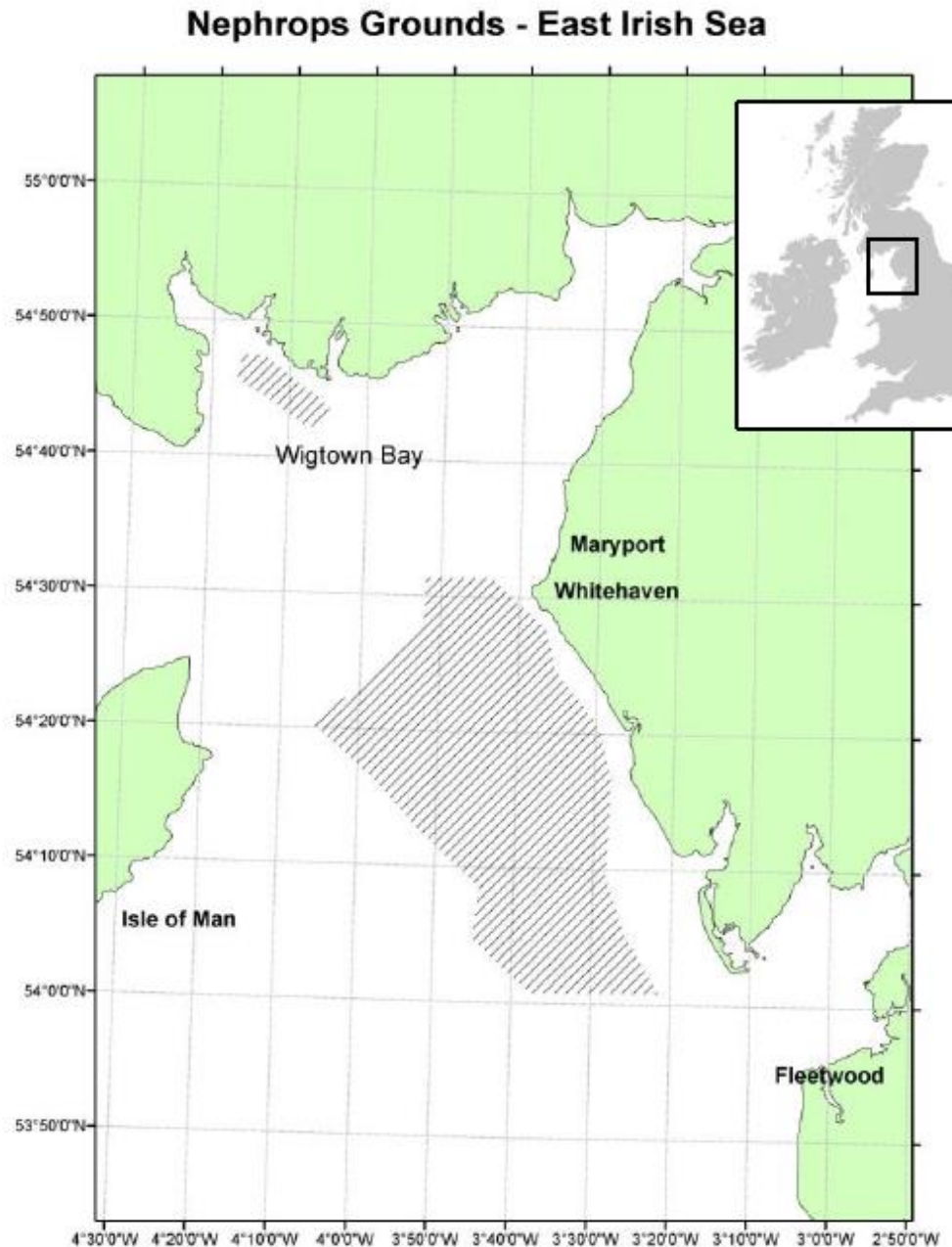
Eastern Irish Sea Nephrops stock (FU14)

Around 500 tonnes of Nephrops are landed per year from FU14

Around 30 small English Nephrops trawlers based at in Whitehaven, Maryport and Fleetwood

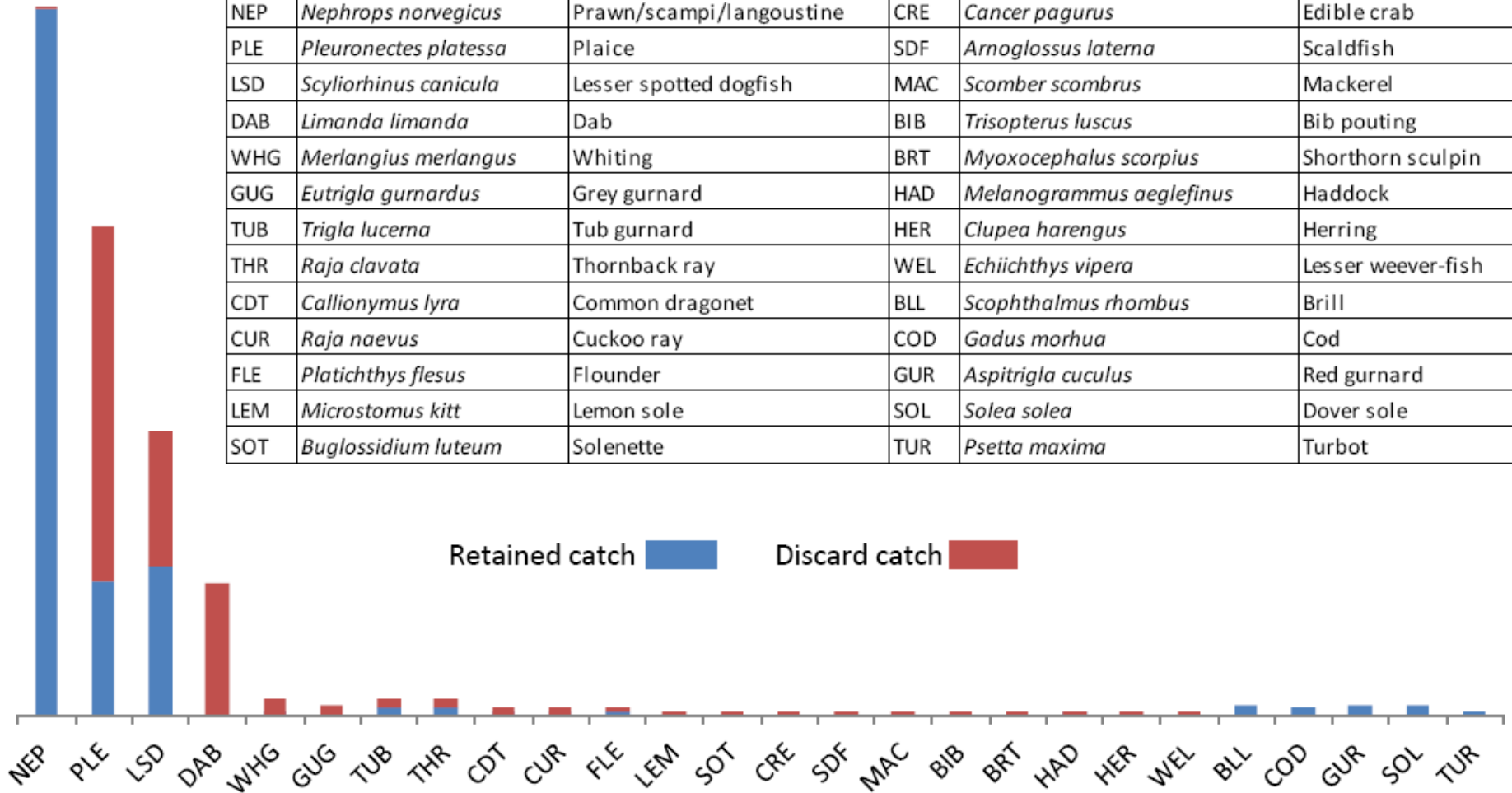
Rest of fleet is generally larger vessels from Northern Ireland

Whitehaven is the main English fishing port, with between 60% and 80% of the total Nephrops landings



What do the English Nephrops trawlers catch?

Code	Latin name	Common name	Code	Latin name	Common name
NEP	<i>Nephrops norvegicus</i>	Prawn/scampi/langoustine	CRE	<i>Cancer pagurus</i>	Edible crab
PLE	<i>Pleuronectes platessa</i>	Plaice	SDF	<i>Arnoglossus laterna</i>	Scaldfish
LSD	<i>Scyliorhinus canicula</i>	Lesser spotted dogfish	MAC	<i>Scomber scombrus</i>	Mackerel
DAB	<i>Limanda limanda</i>	Dab	BIB	<i>Trisopterus luscus</i>	Bib pouting
WHG	<i>Merlangius merlangus</i>	Whiting	BRT	<i>Myoxocephalus scorpius</i>	Shorthorn sculpin
GUG	<i>Eutrigla gurnardus</i>	Grey gurnard	HAD	<i>Melanogrammus aeglefinus</i>	Haddock
TUB	<i>Trigla lucerna</i>	Tub gurnard	HER	<i>Clupea harengus</i>	Herring
THR	<i>Raja clavata</i>	Thornback ray	WEL	<i>Echiichthys vipera</i>	Lesser weever-fish
CDT	<i>Callionymus lyra</i>	Common dragonet	BLL	<i>Scophthalmus rhombus</i>	Brill
CUR	<i>Raja naevus</i>	Cuckoo ray	COD	<i>Gadus morhua</i>	Cod
FLE	<i>Platichthys flesus</i>	Flounder	GUR	<i>Aspitrigla cuculus</i>	Red gurnard
LEM	<i>Microstomus kitt</i>	Lemon sole	SOL	<i>Solea solea</i>	Dover sole
SOT	<i>Buglossidium luteum</i>	Solenette	TUR	<i>Psetta maxima</i>	Turbot



Finfish discards

Catches dominated by Nephrops, plaice, dogfish and dab

5% of Nephrops discarded

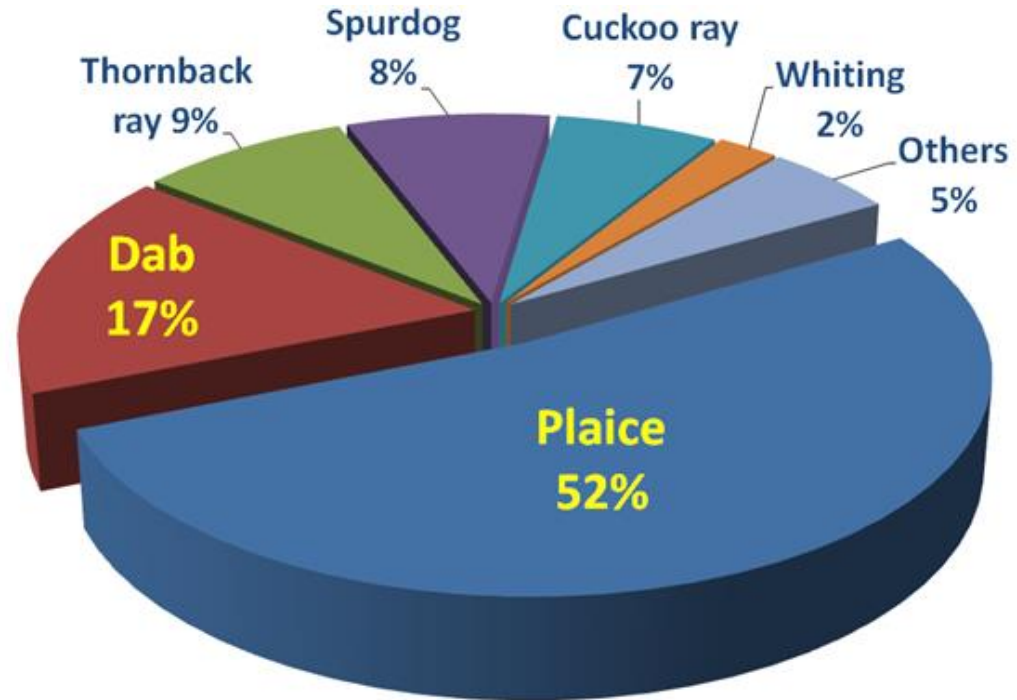
64% of plaice discarded

Cod make up less than 0.5%

of the total catch <10% is discarded

Whiting make up around 1% of the catch 90% is discarded

Other regulated species caught include rays, haddock, spurdog, herring and sole.





The English NW discards project

January 2010 to May 2013 to reduce unwanted catches in the NW England Nephrops fishery

Regional coordinator from NFFO

Validated self-sampling of skippers design ideas: 9 vessels, 21 trials, 424 hauls; square mesh panels, letter box escape, no bridles, floating bridles, separator trawls, selection grids

The project was modified in 2012 to include selectivity towards cod and other gadoids

Scientific trials of best designs of three most promising designs: 160mm side escape panels, floating bridles and 200mm x 6m square mesh panel



Results:

160mm side-escape panels:

plaice discards reduced by 13%

whiting catches reduced by 32%

Floating bridles:

plaice discards reduced by 54%

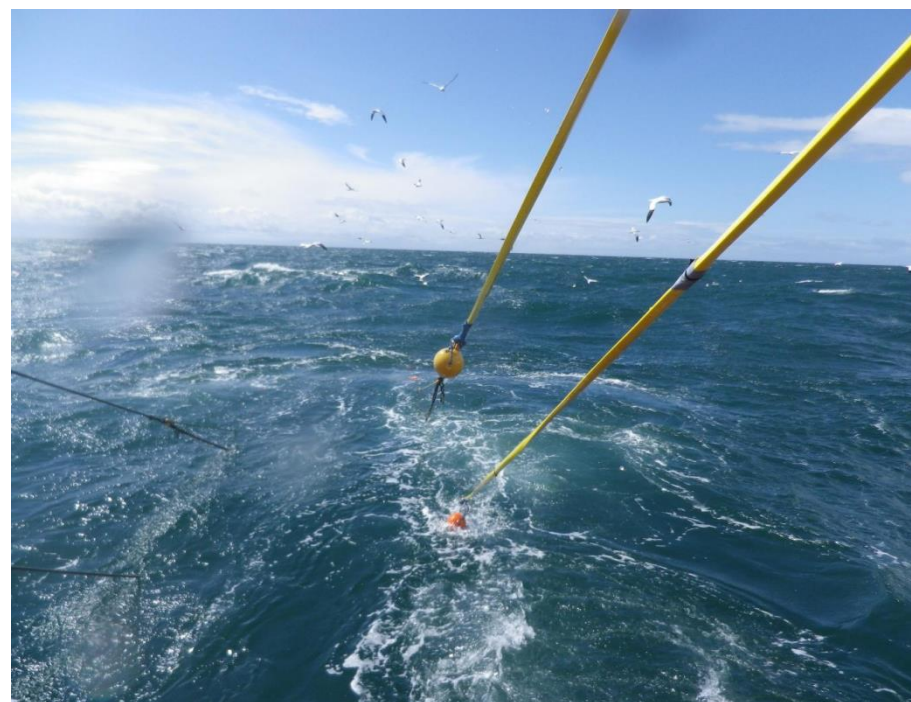
whiting catches reduced by 95%

200mm x 6m square mesh panel:

plaice discards reduced by 22%

whiting catches reduced by 99%

No significant change in Nephrops
catches with any design



Cod Recovery Zone (CRZ) Days at Sea 2014/15: Technical gear specifications for TR2 vessels fishing for nephrops in the Irish Sea

1. 200mm square mesh panel 6m
2. 200mm square mesh panel 3m (only available for vessels 12 metres or less)
3. 300mm square mesh panel
4. Seltra '300' trawl
5. Seltra '270' trawl
6. Faithlie panel
7. Flip-Flap trawl
8. Net Grid or variants
9. Inclined separator panel
10. Swedish Grid

https://www.gov.uk/government/uploads/system/uploads/attachment_data/file/324341/days-cod-tr2gear.pdf

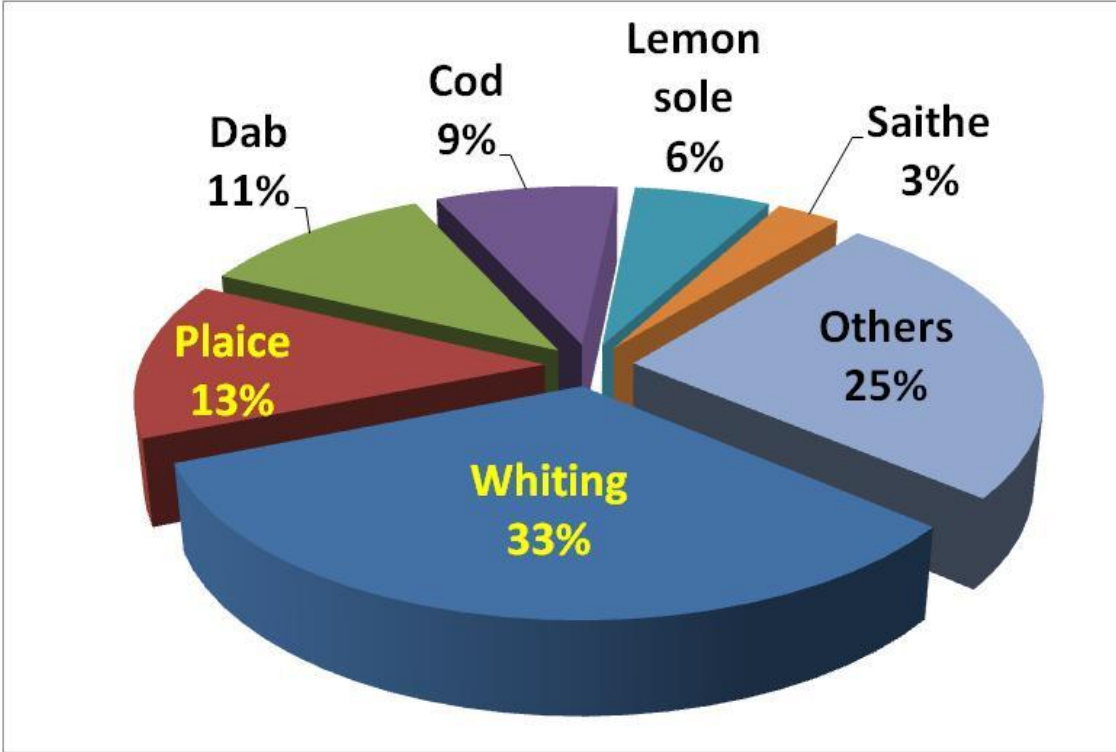
North Sea Farne Deep Nephrops stock (FU6)

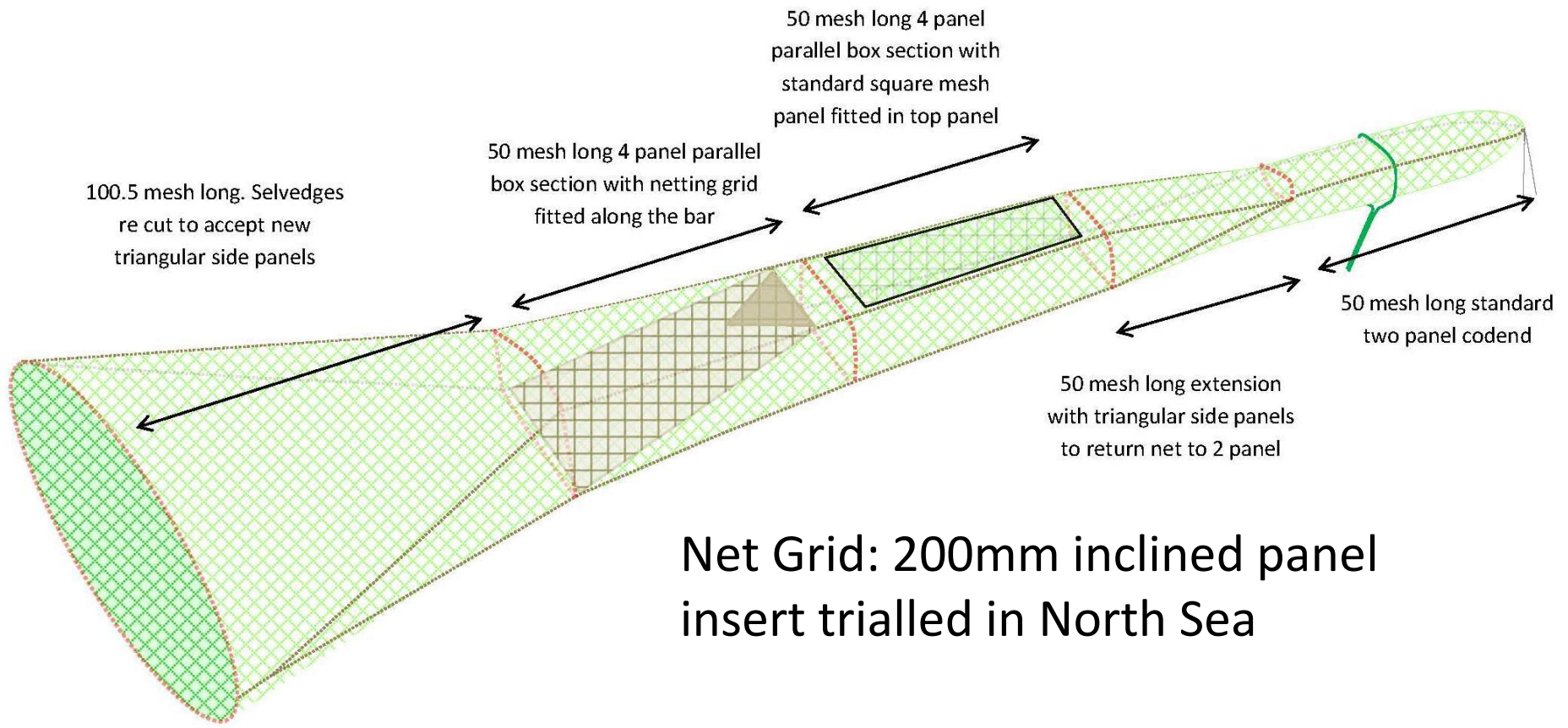
47% of whiting discarded

57% of plaice discarded

50% of cod discarded

Finfish discards





Reduced cod catches by 79%

Reduced catches of whiting by 85%

No means currently to target *Nephrops* while avoiding cod and maintaining catches of other marketable fish.