

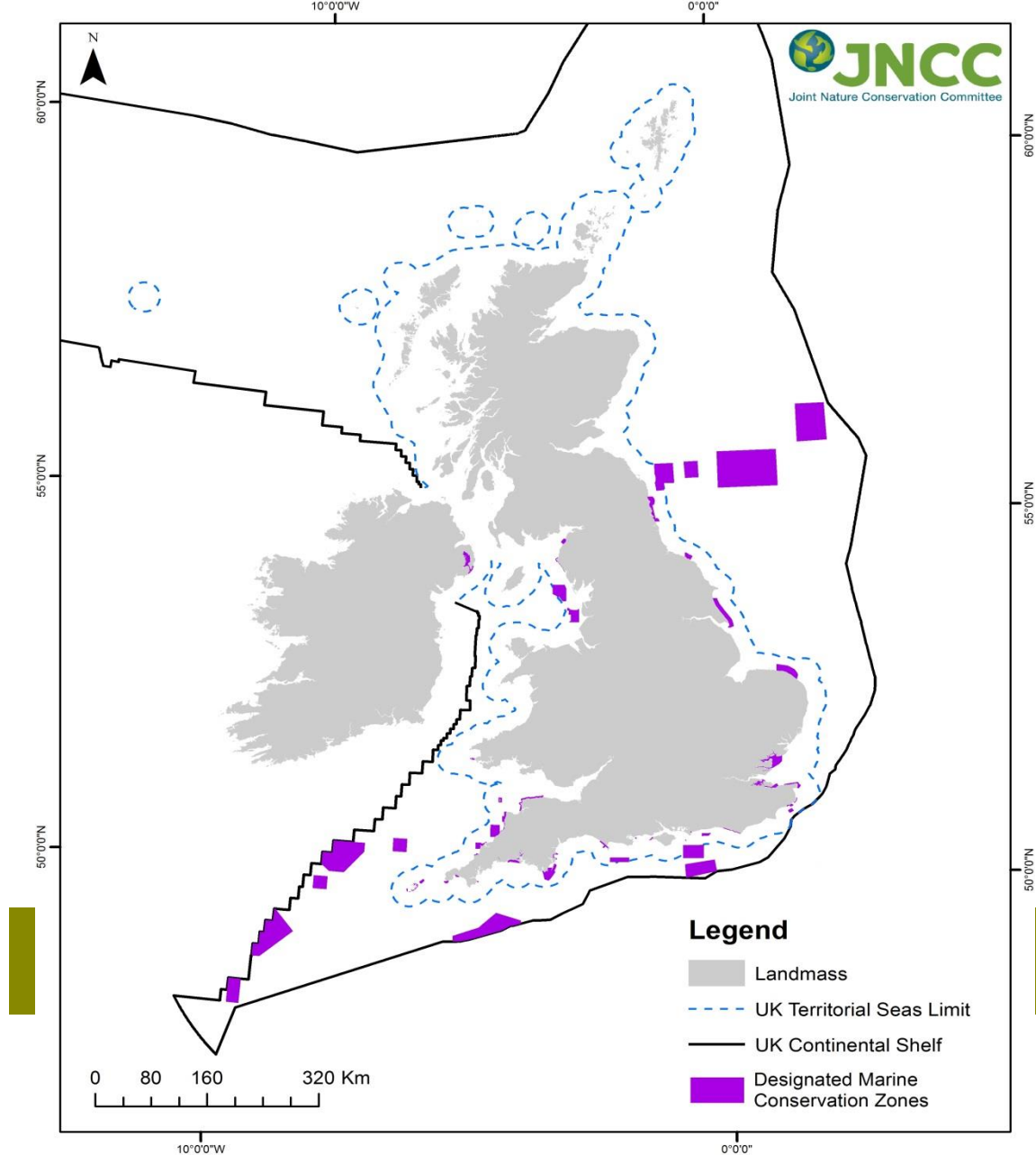


Department
for Environment
Food & Rural Affairs

Future Marine Protected Areas

Marine Conservation Zones (MCZs)

- MCZs are areas that protect a range of nationally important, rare and threatened habitats and species.
- There are currently 50 MCZs in waters around England which were designated in two phases after a process closely involving stakeholders.
- A third phase is now being commenced with the aim to complete the UK Blue Belt and our contribution to an ecologically coherent network in the North East Atlantic.

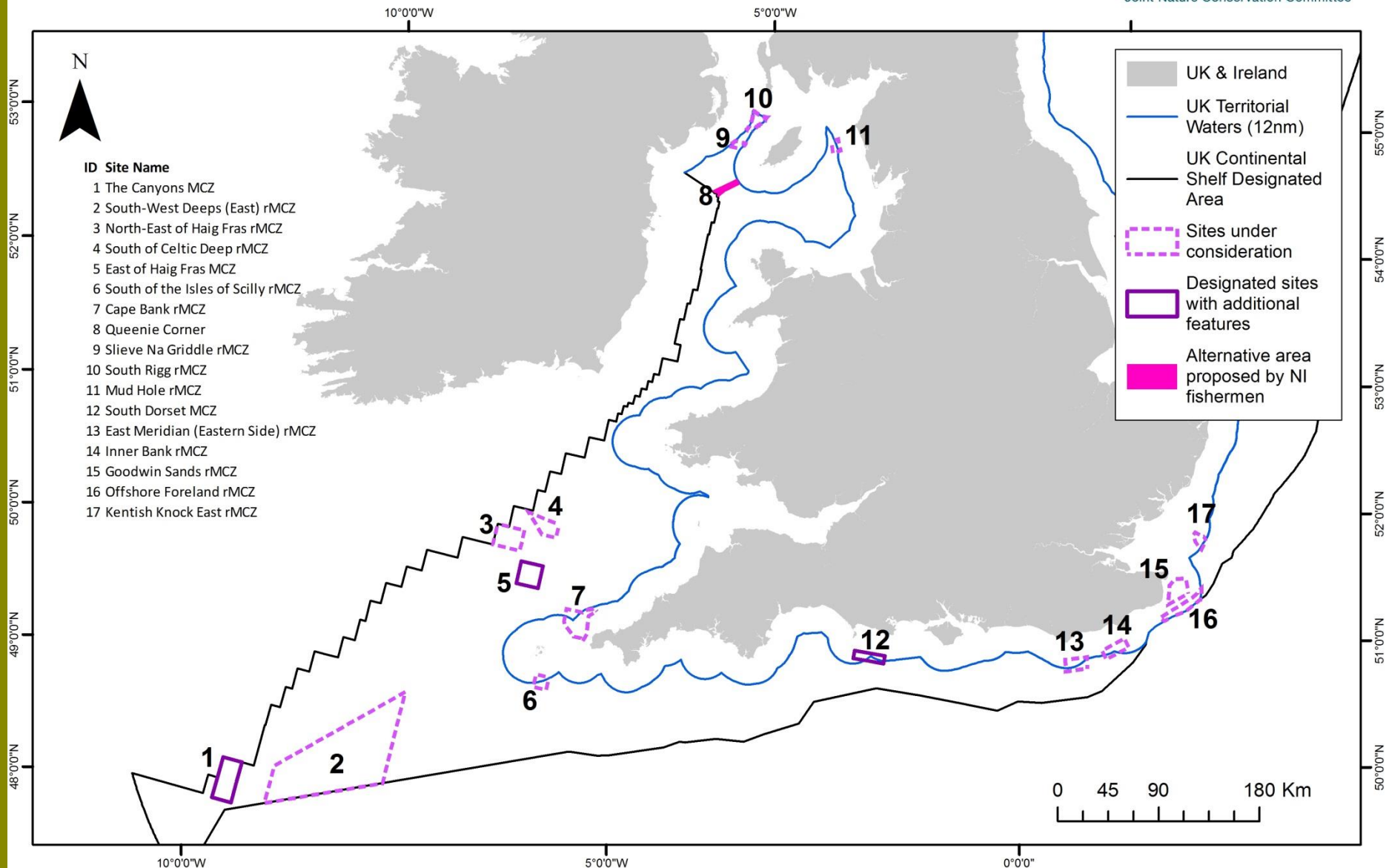


© JNCC 2016. Contains public sector data from © JNCC, NRW, DAERA and NE 2016. Contains OS data © Crown Copyright and database right 2016 and contains public sector information, licensed under the Open Government Licence v2.0, from the United Kingdom Hydrographic Office. Contains derived data from Ordnance Survey © Crown copyright. 100019741 (2015). World Vector Shore © US Defence Mapping Agency. Not to be used for navigation. Map Projection: British National Grid.

Proposals for future MCZs – Regional Projects

- The UK will complete its Blue Belt and make a full contribution to its international obligations for a MPA network. It is considering the following areas identified by the Regional MCZ Projects as possible future MCZs in the NWW region:

Sites under consideration as possible future Marine Conservation Zones in the Channel, South West and Irish Sea region



© JNCC 2016. © Contains public sector information licensed under the Open Government Licence v3.0

(www.nationalarchives.gov.uk/doc/open-government-licence/version/3/). UK Territorial Sea Limit. Contains UKHO data © Crown copyright. All rights reserved. The exact limits of the UK Continental shelf are set out in orders made under section 1 (7) of the Continental Shelf Act 1964 and Continental Shelf (Designation of Areas) Order 2013. World Vector Shoreline © US Defence Mapping Agency. Not to be used for navigation.

Proposals for future MCZs – New sites

- Sites for the third tranche will be largely selected from the Regional MCZ Project recommendations.
- If there are gaps identified within the network that cannot be addressed by any of the remaining recommendations then the UK will be developing alternative options.
- New sites are therefore currently being considered by JNCC and Natural England.
- Engagement around these sites will commence shortly.

Additional features

- To help complete the network, the UK will be adding gap filling features to Tranche 1 and 2 sites.
- Sites where additional features are being considered are:
 - South Dorset MCZ
 - The Canyons MCZ
 - East of Haig Fras MCZ



Tranche 3 – Selection

What are we considering for the selection of sites to complete the UK's Blue Belt:



- The completeness of our current network
- Ecological importance
- Evidence
- Social and economic considerations

MCZ Tranche 3 - Process

- The Joint Nature Conservation Committee (JNCC) are reviewing progress of the current network to fill any shortfalls
- JNCC and Natural England (NE) are reviewing the evidence for features on remaining rMCZs to fill shortfalls
- Defra are engaging with stakeholders to review socio-economic information and, together with JNCC and NE, discuss future general management approaches for sites

Aims of stakeholder meetings

- The completion of the UK's Blue Belt is a Government Manifesto commitment
- We would like to submit the best options for sites to the Minister for designation, and stakeholder input will help with this aim
- We would be grateful for any additional information about activities and how site designation would affect stakeholders



Extra information needed

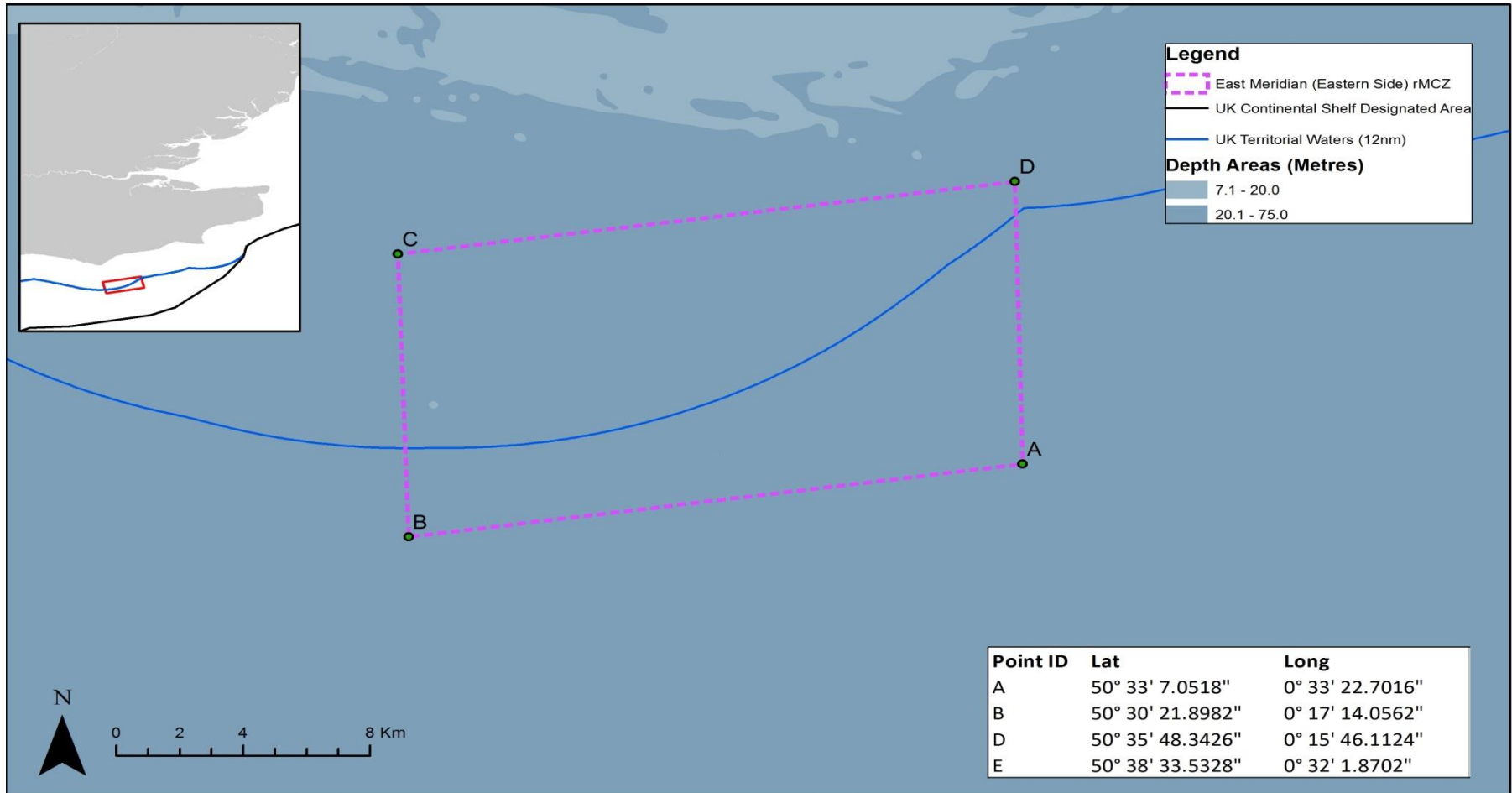
- Are the activities identified during the Regional MCZ Project still occurring within the site?
- Are there any additional activities occurring within this site that have not been captured?
- Do you have any new information on cost to industry (which hasn't been included in the RP or T1 or T2 assessments)?
- Non UK fishing stakeholders – can you provide landings data / additional information regarding use of sites?

Next steps

- We would be grateful for:
- Up to date landings values and tonnages, and
- any other information/evidence to be considered.
- A landings data call has been made
- If possible, please submit any further information by 31 October 2016 to
- mcz@defra.gsi.gov.uk
- The third tranche of MCZs will be officially consulted on in 2017, and any designations will be made in 2018

East Meridian (Eastern Side) rMCZ

East Meridian (Eastern Side) rMCZ boundary map

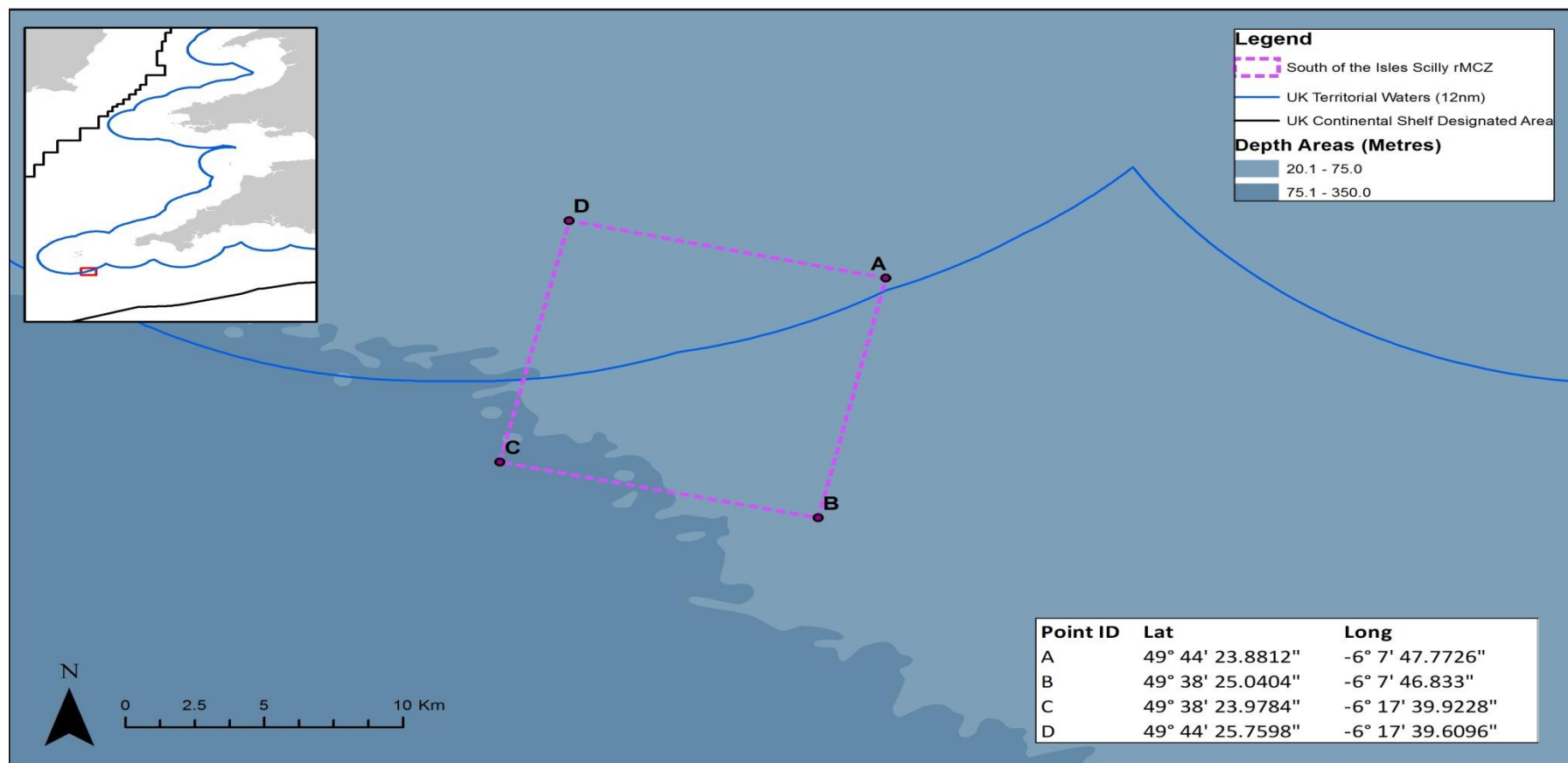


East Meridian (Eastern Side) rMCZ – Fishing Activity

Fisheries	Known activity
Scallop dredging	UK, Dutch, Belgian and French
Beam trawling	UK, Dutch, Belgian and French
Set netting	UK
Bottom trawling	UK
Hooks and Lines	UK
Pots and Traps	UK

South of the Isles of Scilly rMCZ

South of the Isles of Scilly rMCZ boundary map



© JNCC 2016. © Contains UKHO and Natural England information licensed under the Open Government Licence v3.0 (www.nationalarchives.gov.uk/doc/open-government-licence/version/3/).
Contains derived data from Ordnance Survey © Crown copyright. 100019741 (2015). UK Territorial Sea Limit. The exact limits of the UK Continental shelf are set out in orders made under section 1 (7) of the Continental Shelf Act 1964 and Continental Shelf (Designation of Areas) Order 2013. World Vector Shoreline © US Defence Mapping Agency. Not to be used for navigation.

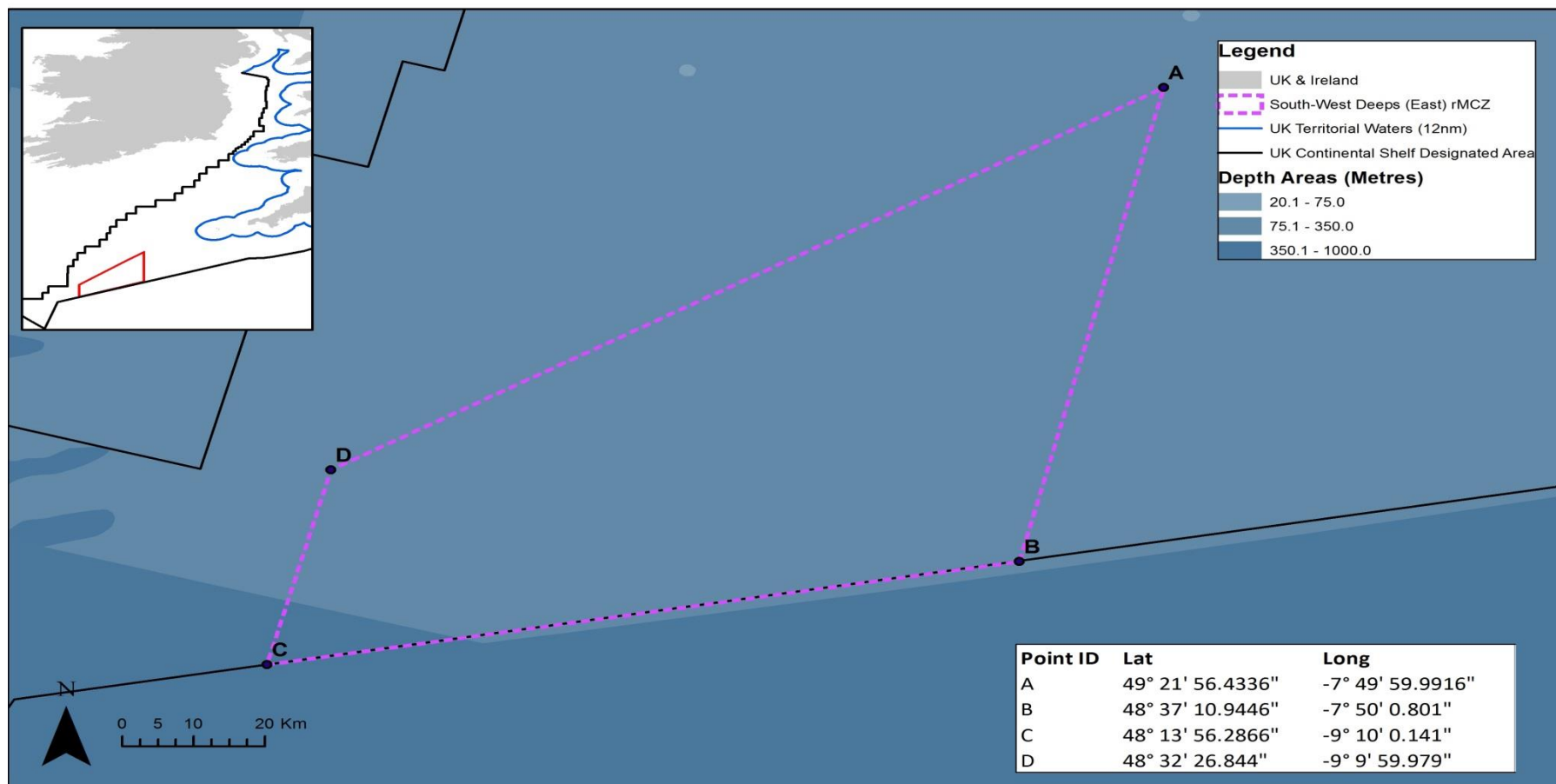


South of the Isles of Scilly rMCZ – Fishing Activity

Fisheries	Known Activity
Beam trawls	UK, non-UK
Otter trawls	UK, non-UK
Dredges	UK
Mid-water trawls	Non-UK

South-West Deeps (East) rMCZ

South-West Deeps (East) rMCZ boundary map



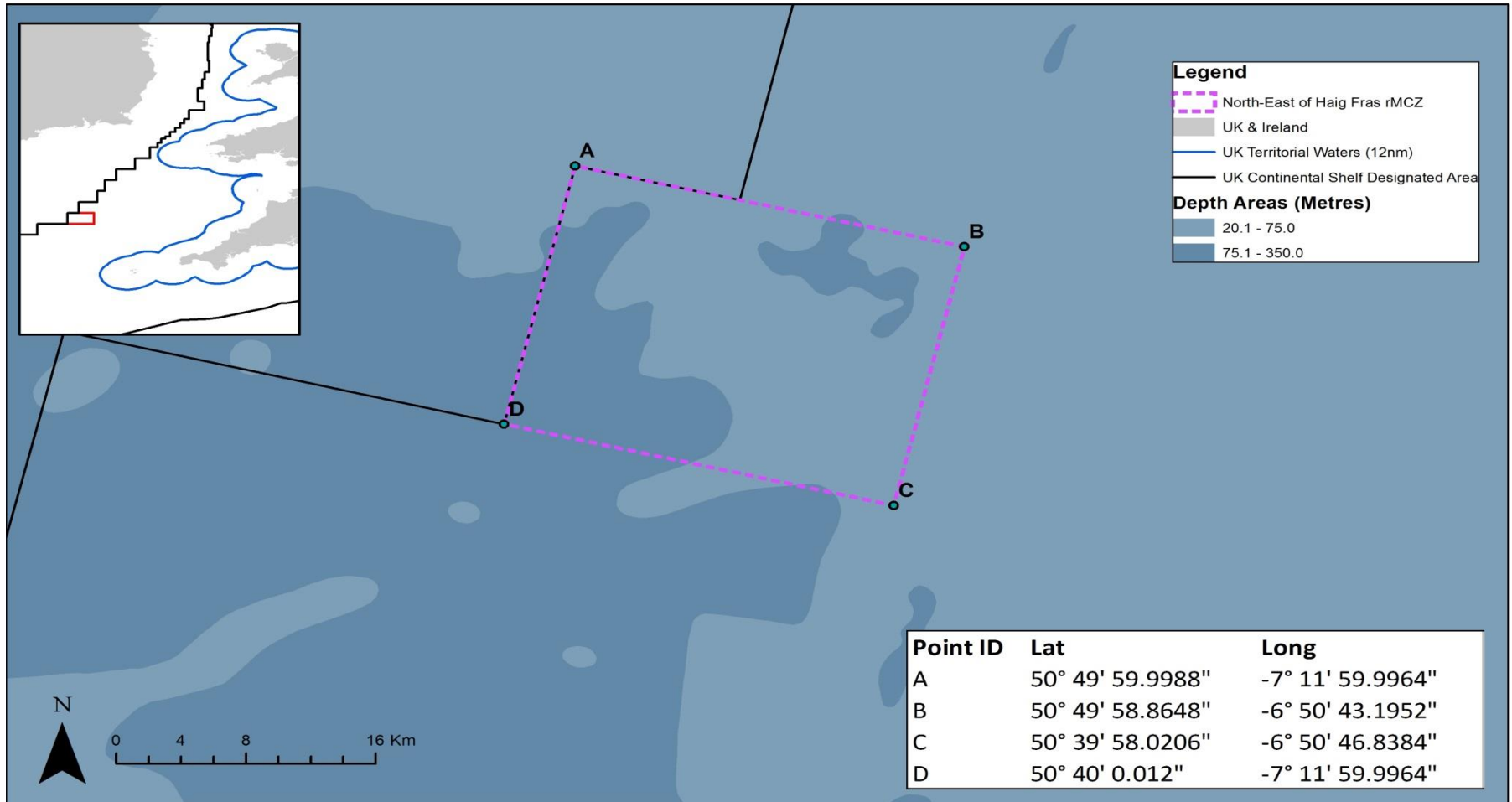
South-West Deeps (East) rMCZ – Fishing Activity

Fisheries	Known activity
Beam trawls	UK, non-UK
Otter trawls	UK, FR
Dredges	UK, non-UK
Longlining	UK, SP
Netting	UK, non-UK
Mid-water trawling	UK, non-UK



North East of Haig Fras rMCZ

North-East of Haig Fras rMCZ boundary map



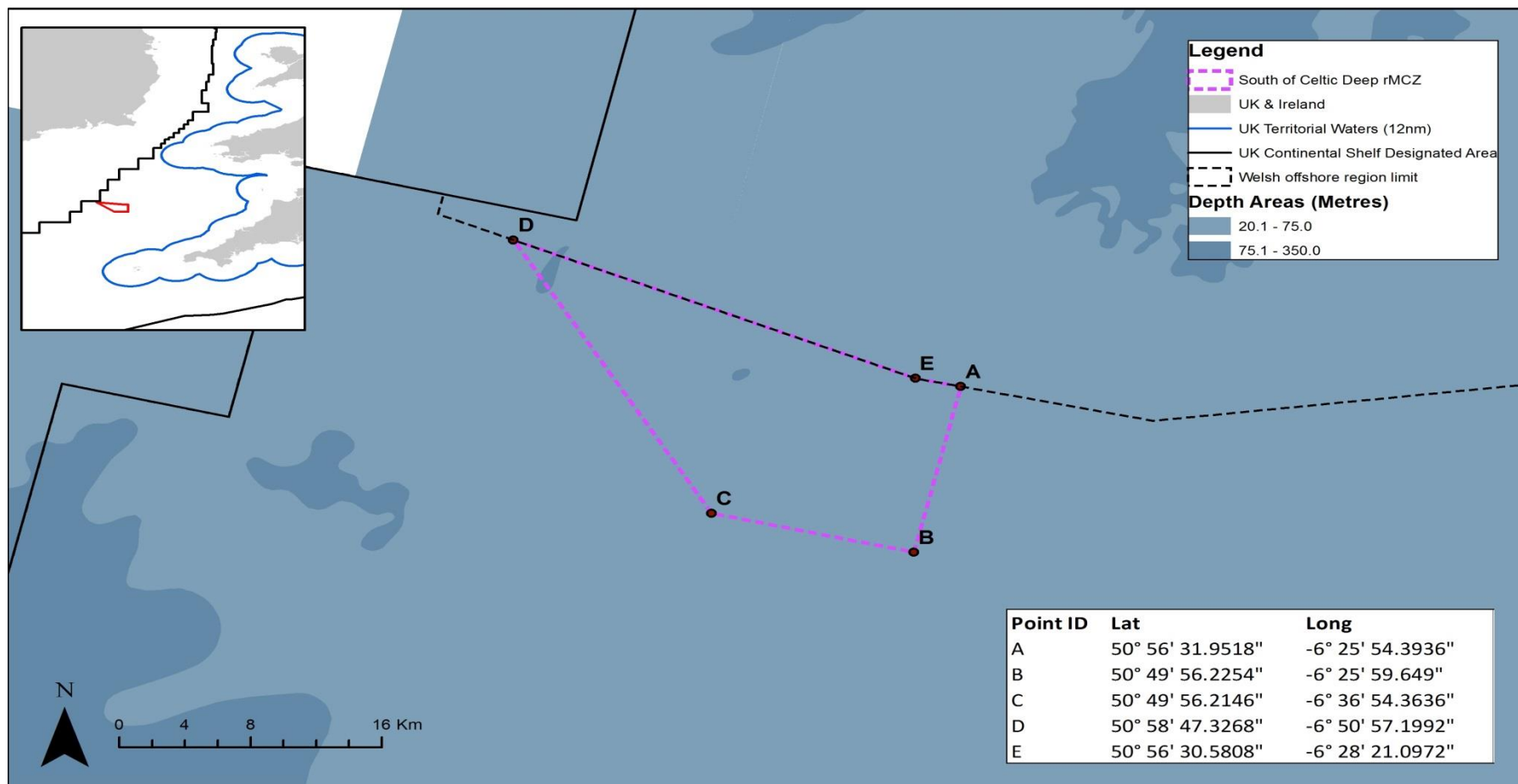
North East of Haig Fras rMCZ – Fishing Activity

Fisheries	Known activity
Otter trawls	FR, UK
Beam trawls	UK, BE
Netting	UK
Mid-water trawls	Non-UK



South of Celtic Deep rMCZ

South of Celtic Deep rMCZ boundary map

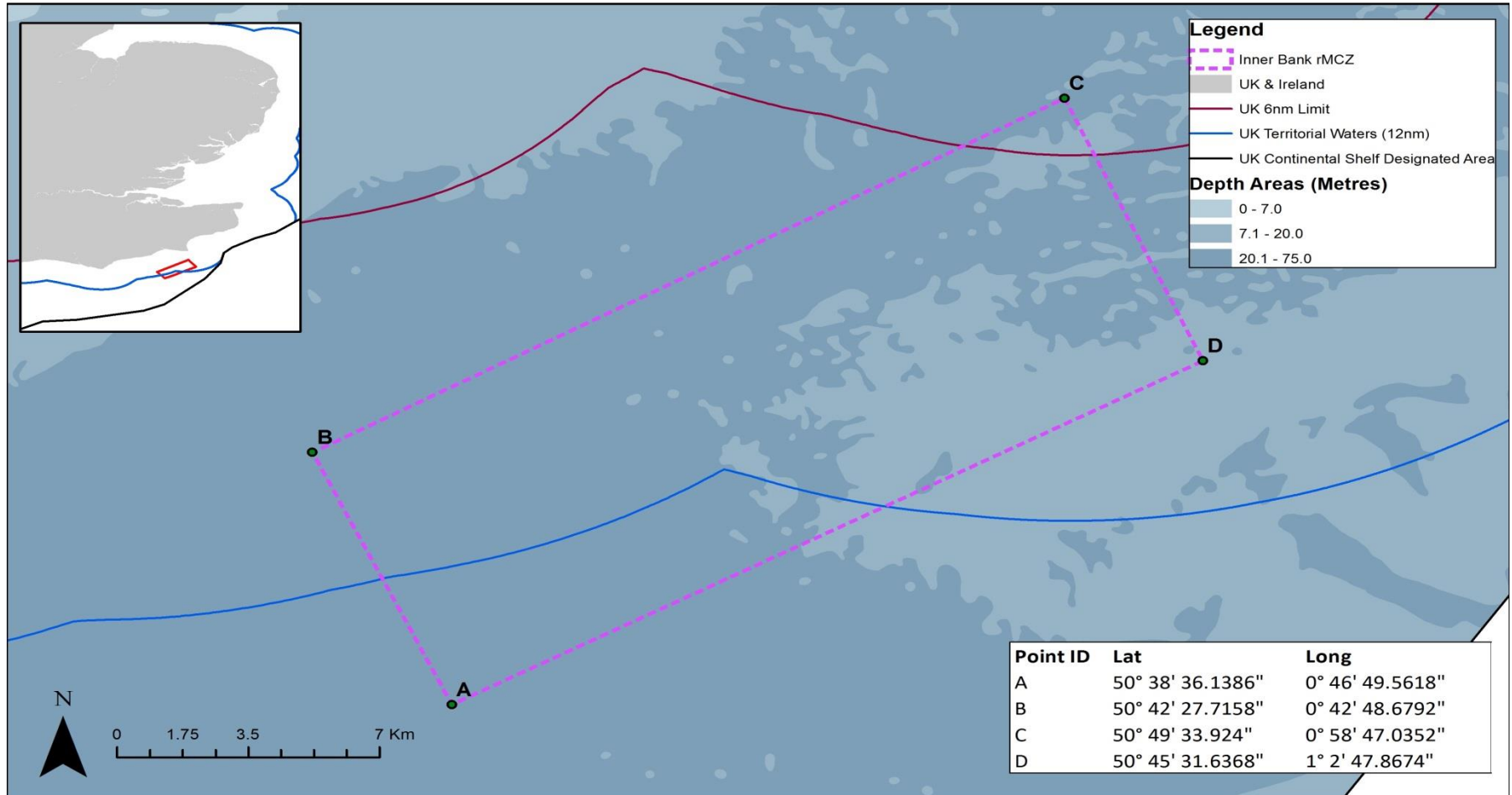


South of Celtic Deep rMCZ – Fishing Activity

Fisheries	Known activity
Otter trawls	UK, FR, IRE
Beam trawling	UK, BE
Mid-water trawls	Non-UK

Inner Bank rMCZ

Inner Bank rMCZ boundary map

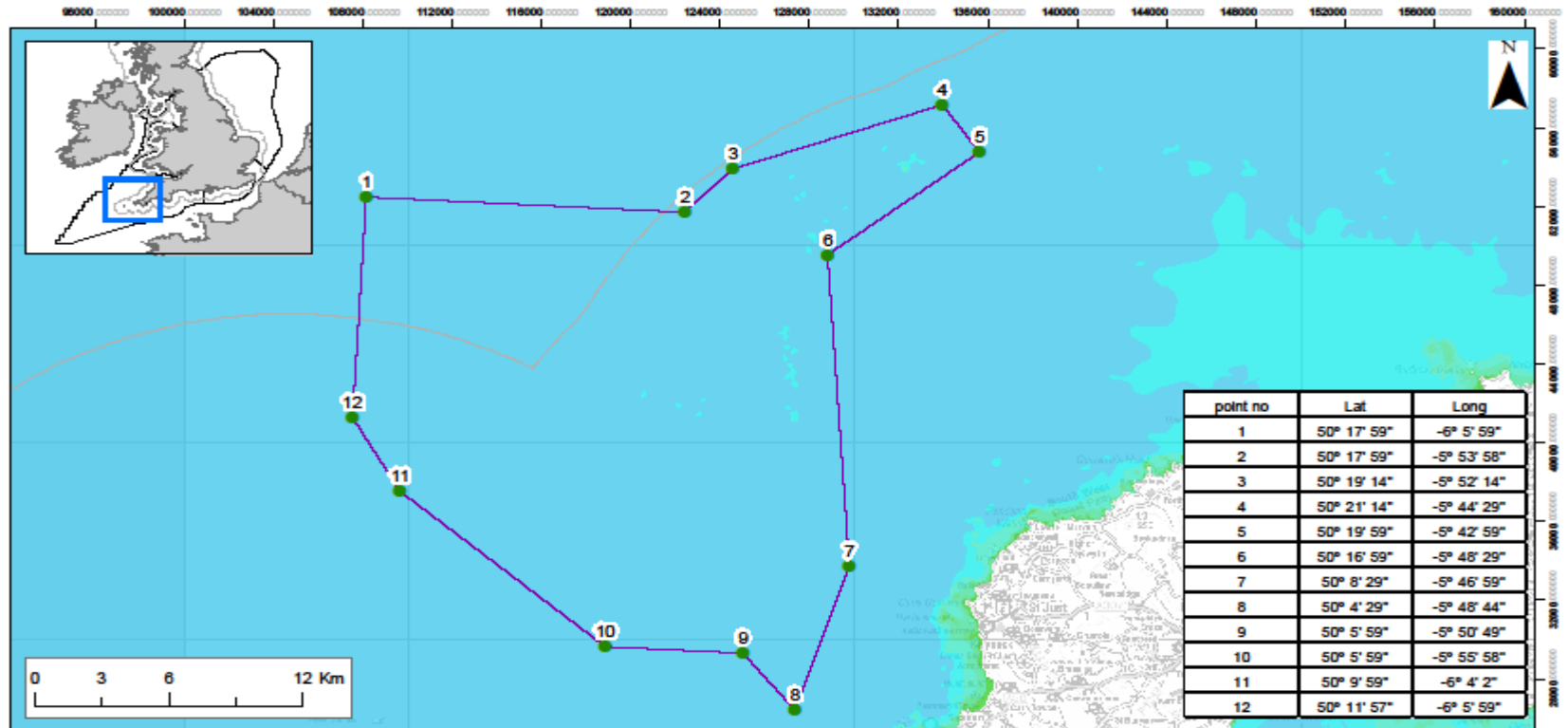


Inner Bank rMCZ – Fishing Activity

Fisheries	Known activity
Bottom trawls/dredges	UK, non-UK
Dredges	UK
Hooks and Lines	UK
Nets	UK
Pots and Traps	UK



Cape Bank rMCZ



Cape Bank

Recommended MCZ

- Recommended MCZ
- rMCZ boundary co-ordinates
- MCZ Regional Projects boundaries
- England 12nm Territorial Seas Limit

Depth Areas (m)

- -20.0 - -10.0
- -9.9 - -5.0
- -4.9 - 0.0
- 0.1 - 5.0
- 5.1 - 10.0
- 10.1 - 25.0
- 25.1 - 50.0
- 50.1 - 100.0
- 100.1 - 250.0
- 250.1 - 500.0
- 500.1 - 1000.0

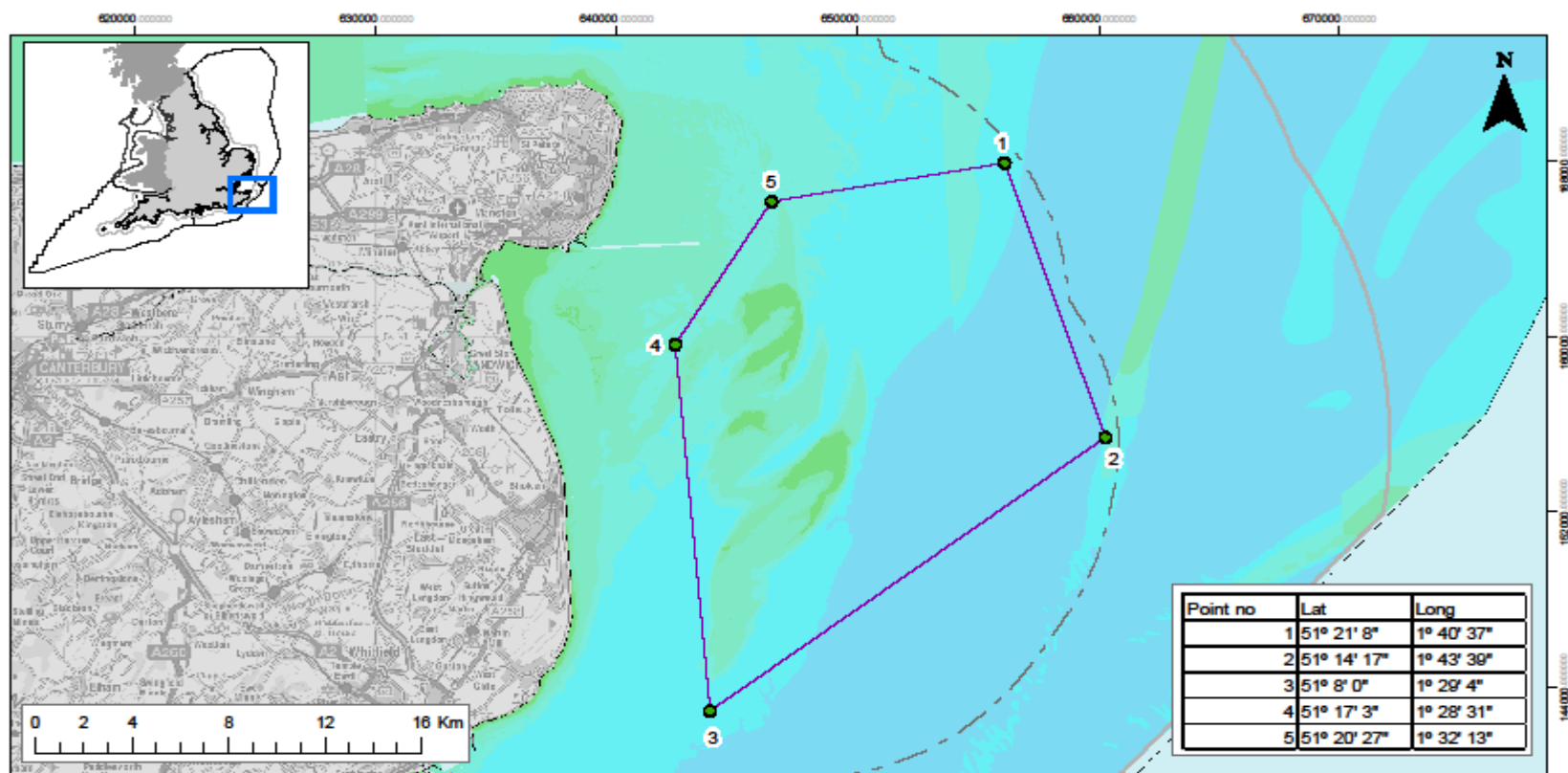
Contains information from the Ordnance Survey
 © Crown Copyright and database right 2012.
 Ordnance Survey 100022021. UKHO Data
 © British Crown Copyright. All rights reserved.
 Permission Number Defra012012.001. This
 product has been derived in part from material
 obtained from the UK Hydrographic Office with
 the permission of the Controller of Her Majesty's
 Stationary Office and UK Hydrographic Office
 (www.ukho.gov.uk). Map produced by
 Natural England/JNCC/Cefas 2012.
 Reference: Theme ID 1477857.
 Map Projection: British National Grid

Cape Bank rMCZ – Fishing Activity

Fisheries	Known activity
Nets	UK
Potting/Trapping	UK
Hooks and Lines	UK
Bottom trawl (beam and otter)	FR, BE, UK
Mid-water trawls	Non-UK



Goodwin Sands rMCZ



Goodwin Sands rMCZ

- Recommended MCZ
- rMCZ boundary co-ordinates
- Regional MCZ project area
- 12nm Territorial Seas Limit
- 6nm Territorial Seas Limit
- Land

Depth Areas (metres)

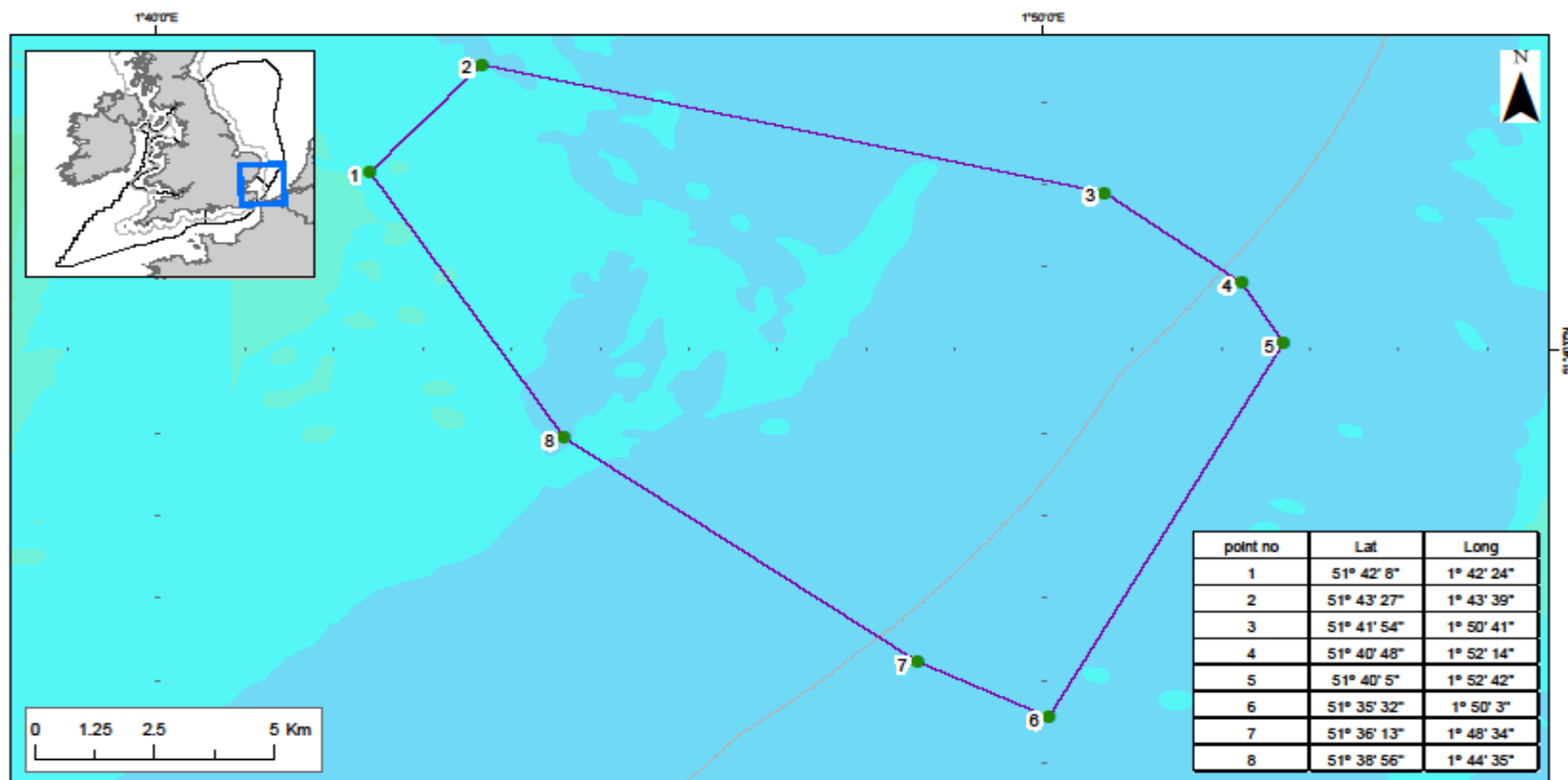
- 20.0 - -10.0
- 9.9 - -5.0
- 4.9 - 0.0
- 0.1 - 5.0
- 5.1 - 10.0
- 10.1 - 25.0
- 25.1 - 50.0
- 50.1 - 100.0
- 100.1 - 250.0
- 250.1 - 500.0
- 500.1 - 1000.0

Contains information from the Ordnance Survey
 © Crown Copyright and database right 2012.
 Ordnance Survey 100022021. UKHO Data
 © British Crown Copyright. All rights reserved.
 Permission Number Defra012012.001. This
 product has been derived in part from material
 obtained from the UK Hydrographic Office with
 the permission of the Controller of Her Majesty's
 Stationery Office and UK Hydrographic Office
 (www.ukho.gov.uk). Map produced by
 Natural England/JNCC 2012.
 Reference: Theme ID: 1477560
 Map Projection: British National Grid

Goodwin Sands rMCZ – Fishing Activity

Fisheries	Known activity
Static and drift	UK

Kentish Knock East rMCZ



Kentish Knock East Recommended MCZ

- Recommended MCZ
- rMCZ boundary co-ordinates
- MCZ Regional Projects boundaries
- England 12nM Territorial Seas Limit

Depth Areas (m)

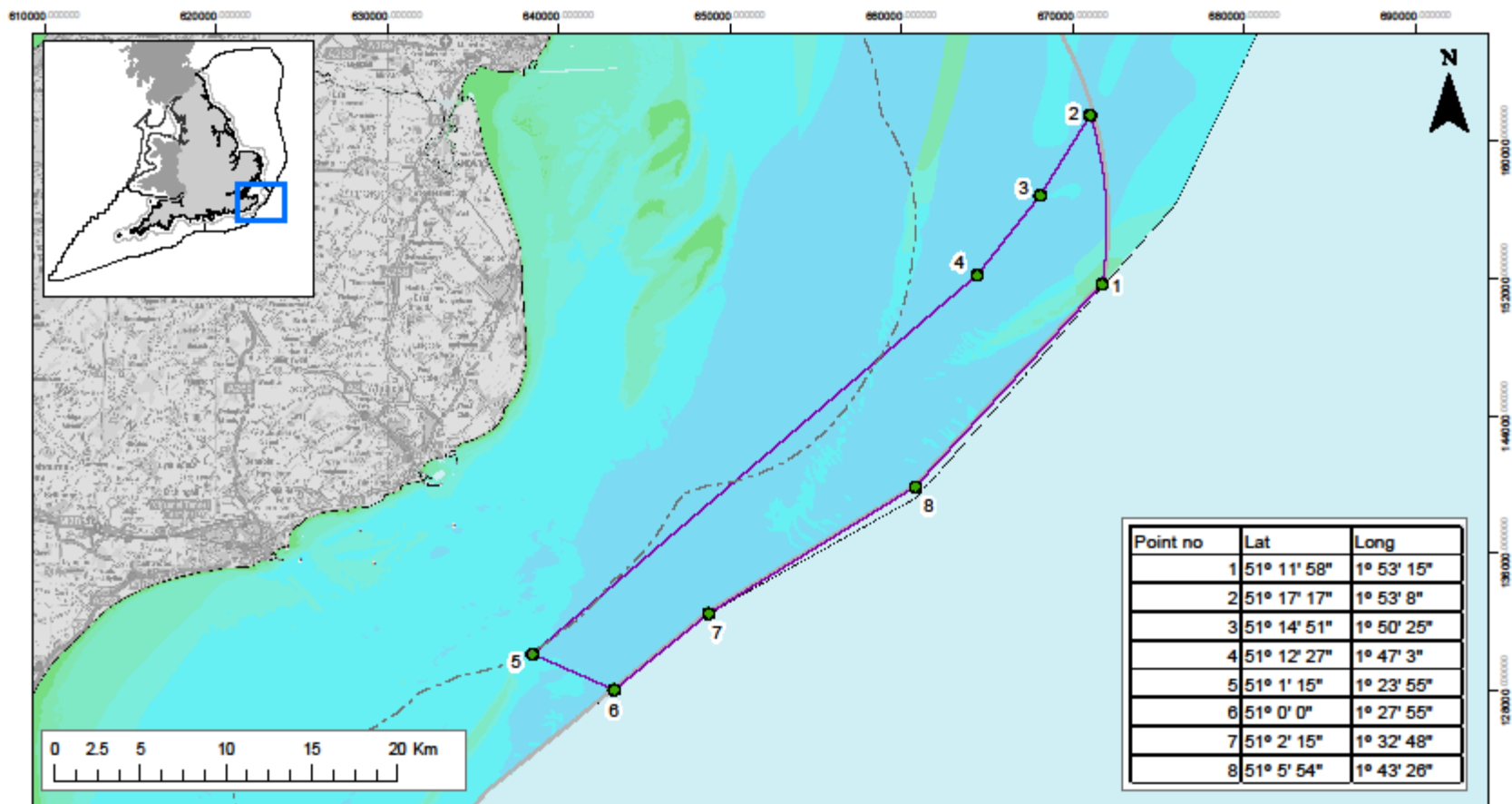
	-20.0 - -10.0		25.1 - 50.0
	-9.9 - -5.0		50.1 - 100.0
	-4.9 - 0.0		100.1 - 250.0
	0.1 - 5.0		250.1 - 500.0
	5.1 - 10.0		500.1 - 1000.0
	10.1 - 25.0		

Contains information from the Ordnance Survey
 © Crown Copyright and database right 2012.
 Ordnance Survey 100022021. UKHO Data
 © British Crown Copyright. All rights reserved.
 Permission Number Defra012012.001. This
 product has been derived in part from material
 obtained from the UK Hydrographic Office with
 the permission of the Controller of Her Majesty's
 Stationery Office and UK Hydrographic Office
 (www.ukho.gov.uk). Map produced by
 Natural England/JNCC/Cefas 2012.
 Reference: Theme ID 1477581,
 Map Projection: WGS84

Kentish Knock East rMCZ – Fishing Activity

Fisheries	Known activity
Bottom trawls	UK, non-UK
Long lines	UK

Offshore Foreland rMCZ



Offshore Foreland rMCZ

- Recommended MCZ
- rMCZ boundary co-ordinates
- Regional MCZ project area
- 12nM Territorial Seas Limit
- 6nM Territorial Seas Limit
- Land

Depth Areas (metres)

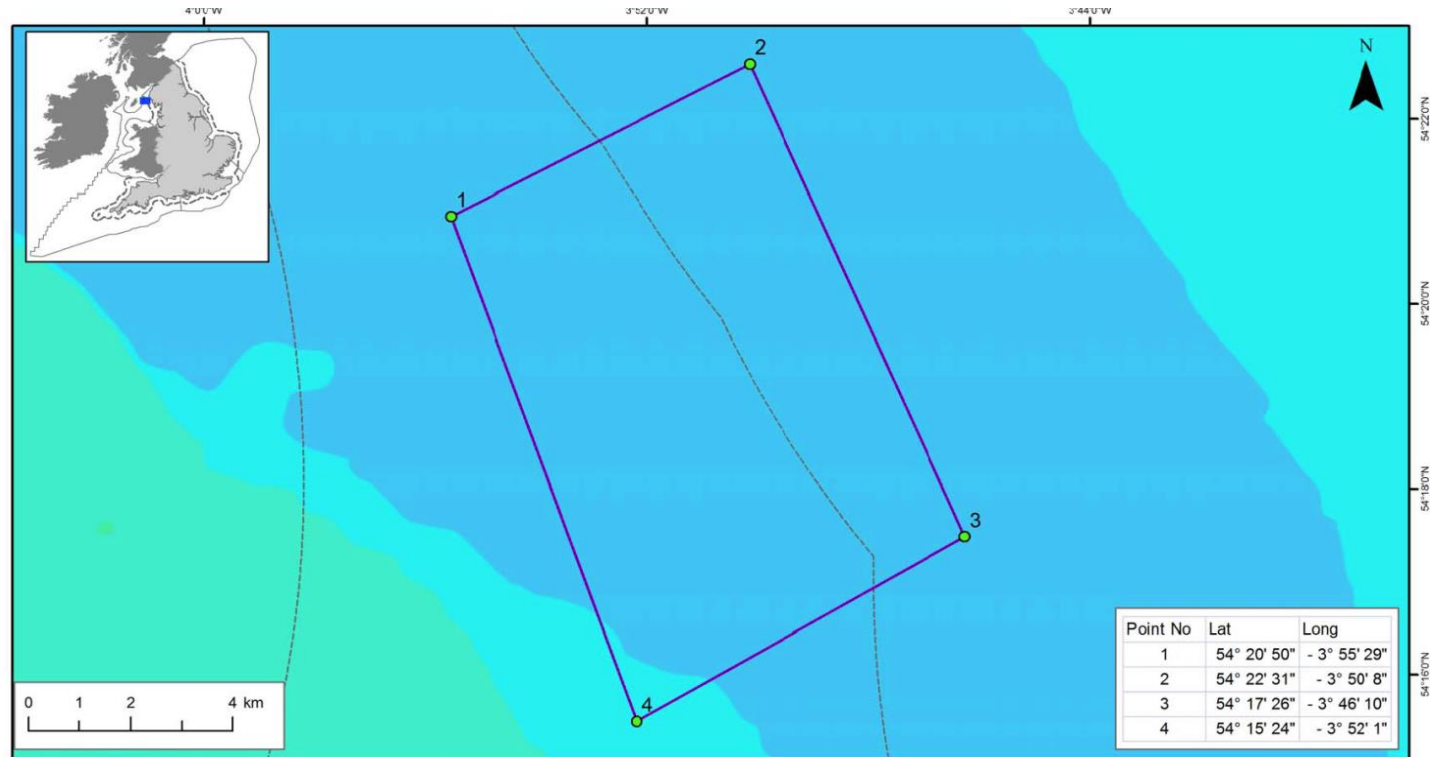
- -20.0 - -10.0
- -9.9 - -5.0
- -4.9 - 0.0
- 0.1 - 5.0
- 5.1 - 10.0
- 10.1 - 25.0
- 25.1 - 50.0
- 50.1 - 100.0
- 100.1 - 250.0
- 250.1 - 500.0
- 500.1 - 1000.0

Contains information from the Ordnance Survey
 © Crown Copyright and database right 2012.
 Ordnance Survey 100022021. UKHO Data
 © British Crown Copyright. All rights reserved.
 Permission Number Defra012012.001. This
 product has been derived in part from material
 obtained from the UK Hydrographic Office with
 the permission of the Controller of Her Majesty's
 Stationery Office and UK Hydrographic Office
 (www.ukho.gov.uk). Map produced by
 Natural England/JNCC 2012.
 Reference: Theme ID: 1477561
 Map Projection: British National Grid

Offshore Foreland rMCZ – Fishing Activity

Fisheries	Known activity
Bottom trawls	UK, non-UK
Dredges	UK
Hooks and Lines	UK
Nets	UK
Pots and Traps	UK

Mud Hole rMCZ



Mud Hole rMCZ

- Recommended MCZ
- rMCZ boundary co-ordinates
- Regional MCZ project area
- 12nM Territorial Seas Limit
- Land

Depth Areas (metres)

- 0.0 - 5.0
- 5.1 - 10.0
- 10.1 - 25.0
- 25.1 - 50.0
- 50.1 - 100.0
- 100.1 - 250.0
- 250.1 - 500.0
- 500.1 - 1000.0

Contains information from the Ordnance Survey
 © Crown Copyright and database right 2012.
 Ordnance Survey 100022021. UKHO Data
 © British Crown Copyright. All rights reserved.
 Permission Number Defra012012.001. This
 product has been derived in part from material
 obtained from the UK Hydrographic Office with
 the permission of the Controller of Her Majesty's
 Stationery Office and UK Hydrographic Office
 (www.ukho.gov.uk). Map produced by
 Natural England/JNCC 2012.

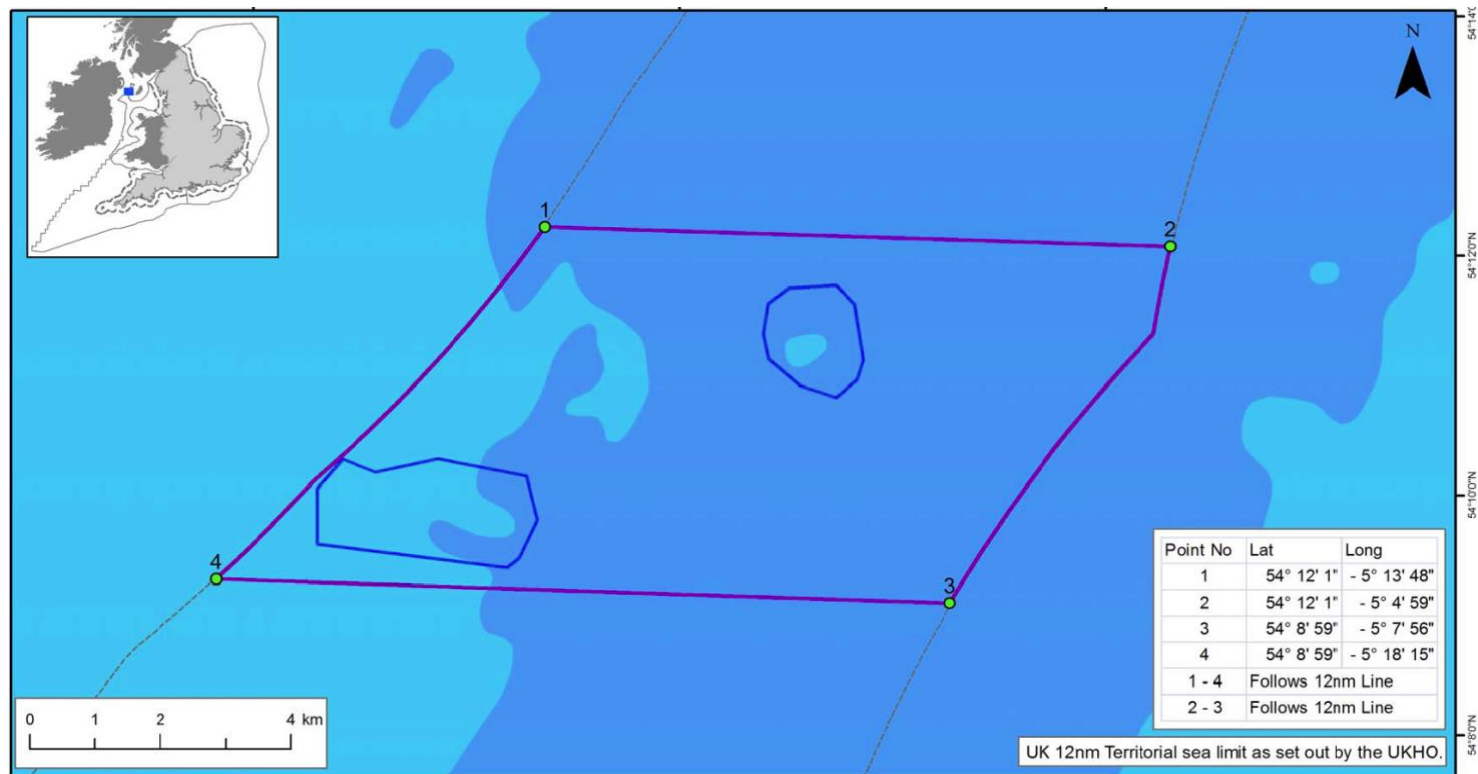
Map Projection: WGS84UTM30N, Inset: BNG

Mud Hole rMCZ – Fishing Activity

Fisheries	Known activity
Dredges	UK
Bottom trawls	UK
Mid-water gear	UK
Pots and Traps	UK
Hooks, lines and nets	UK
Beam trawling	BE
Otter trawling	IRE



Slieve Na Griddle rMCZ



Slieve Na Griddle rMCZ

- rMCZ boundary co-ordinates
- Recommended MCZ
- Regional MCZ project area
- - - 12nm Territorial Seas Limit
- Land
- SACs with Marine Components

Depth Areas (metres)

- 0.0 - 5.0
- 5.1 - 10.0
- 10.1 - 25.0
- 25.1 - 50.0
- 50.1 - 100.0
- 100.1 - 250.0
- 250.1 - 500.0
- 500.1 - 1000.0

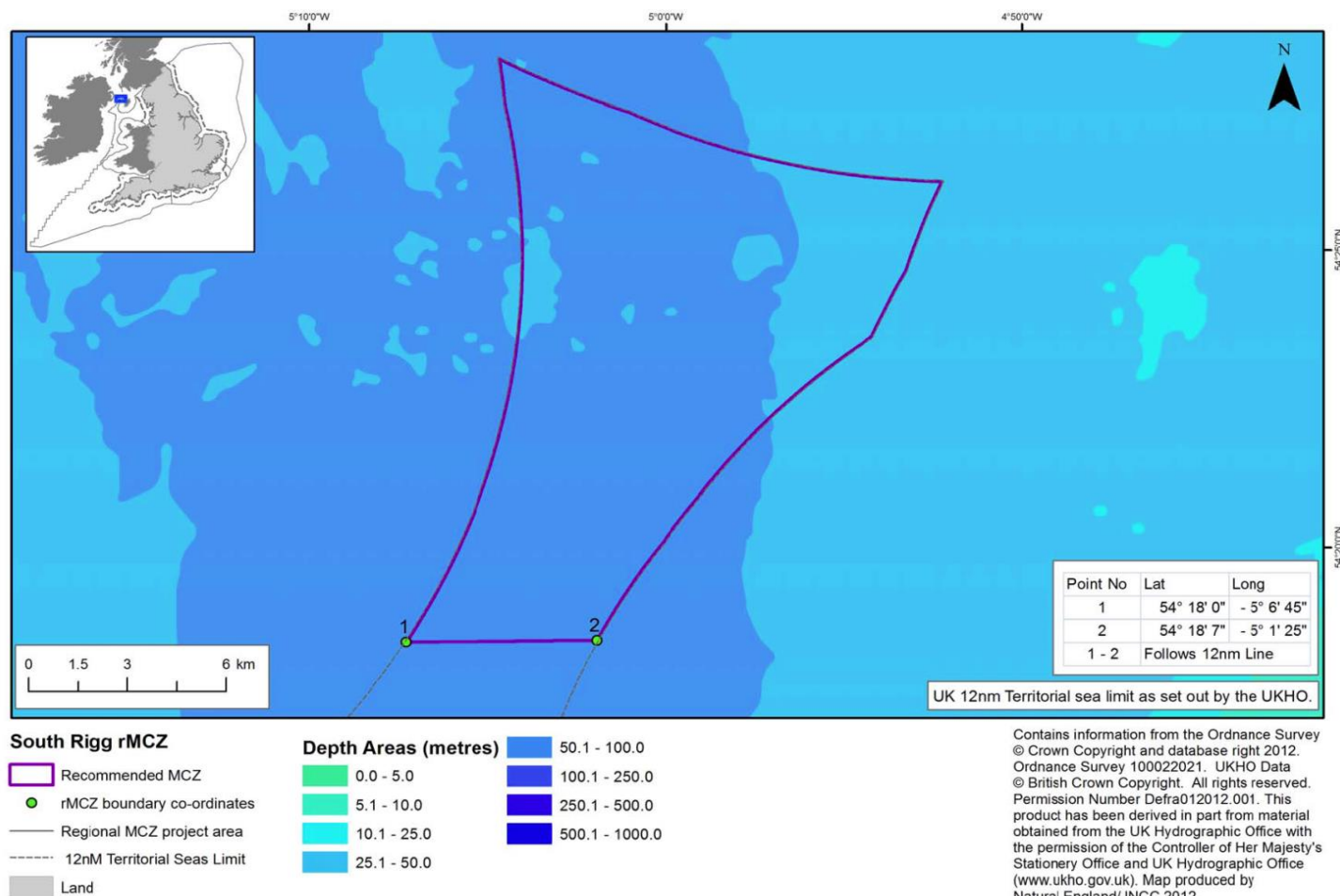
Contains information from the Ordnance Survey
 © Crown Copyright and database right 2012.
 Ordnance Survey 100022021. UKHO Data
 © British Crown Copyright. All rights reserved.
 Permission Number Defra012012.001. This
 product has been derived in part from material
 obtained from the UK Hydrographic Office with
 the permission of the Controller of Her Majesty's
 Stationery Office and UK Hydrographic Office
 (www.ukho.gov.uk). Map produced by
 Natural England/UNCC 2012.

Map Projection: WGS84UTM30N, Inset: BNG

Slieve Na Griddle rMCZ – fishing activity

Fisheries	Known activity
Bottom trawlers	UK
Mid-water trawls	UK
Pots and Traps	UK
Hooks, Lines and Nets	UK

South Rigg rMCZ

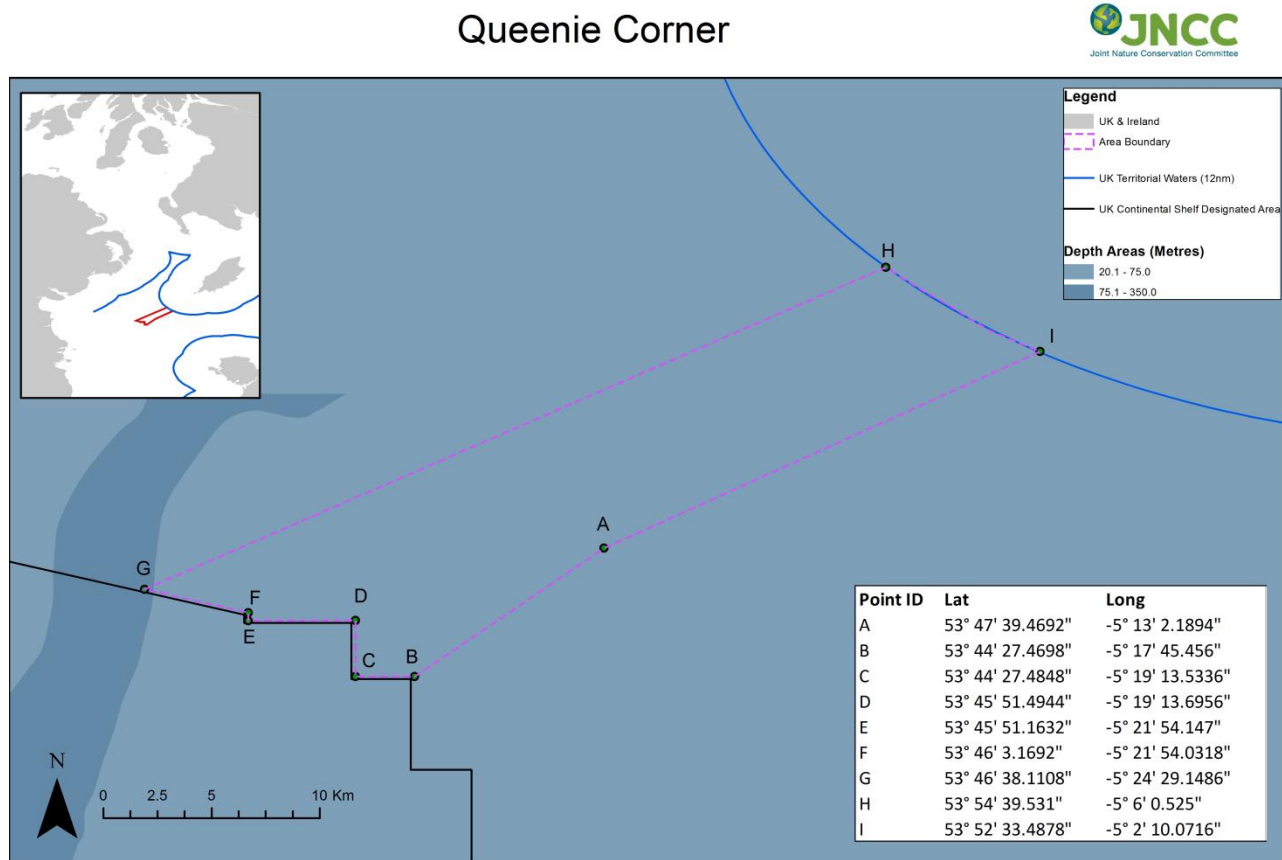


South Rigg rMCZ – fishing activity

Fisheries	Known activity
Dredges	UK
Bottom Trawls	UK
Mid-water Trawls	UK
Hooks and Lines	UK



Queenie Corner



© JNCC 2016. © Contains UKHO and Natural England information licensed under the Open Government Licence v3.0 (www.nationalarchives.gov.uk/doc/open-government-licence/version/3/). Contains derived data from Ordnance Survey © Crown copyright. 100019741 (2015). UK Territorial Sea Limit. The exact limits of the UK Continental shelf are set out in orders made under section 1 (7) of the Continental Shelf Act 1964 and Continental Shelf (Designation of Areas) Order 2013. World Vector Shoreline © US Defence Mapping Agency. Not to be used for navigation.

Queenie Corner – fishing activity

Fisheries	Known activity
Dredges	UK
Bottom Trawls	UK, non-UK
Mid-water Trawls	UK, non-UK
Hooks and Lines	UK

