

ICES advice for North Western Waters stocks for 2021

NWWAC meeting, July 7-8 2020

ADVICE INTRODUCTION AND SUMMARY

Ghislain Chouinard
ICES ACOM vice-chair



Science for sustainable seas

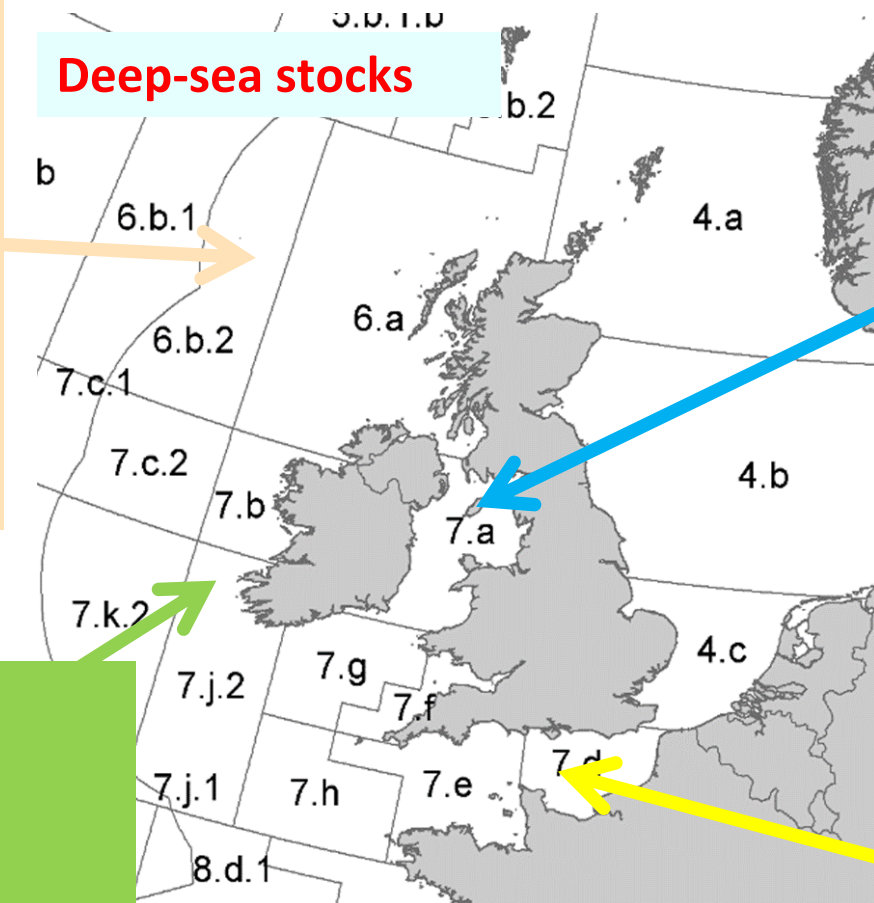
Image Dirk Vonten, Fotolia

North Western Waters stocks

West of Scotland & Rockall (6.ab)

- Cod (6.a; 6.b)
- Haddock (4,6.a,sub 20; 6.b)
- Whiting (6.a; 6.b)
- Anglerfish (3.a,4,6)
- Megrin (4.a-6.a; 6.b)
- Saithe 3.a 4, 6
- *Nephrops* (FUs11-12-13)

Deep-sea stocks



Irish Sea (7.a)

- Cod
- Haddock
- Whiting
- Plaice
- Sole
- *Nephrops* (FUs 14-15-19)

Channel

- Cod (4, 7.d, Skagerrak)
- Plaice (7.d; 7.e)
- Sole (7.d; 7.e)
- Whiting (4,7d)
- Brill (3.a, 4, 7.de)
- Witch (3.a, 4, 7.d)
- Lemon sole (3.a, 4, 7.d)
- Striped red mullet (3.a, 4, 7.d)

Celtic Sea & West, Southwest Ireland

- Plaice (CS; 7.h-k; 7.bc)
- Sole (CS; 7.b-c;7.h-k; 7.bc)
- Northern hake
- Anglerfish (7.b-k, 8.abd)
- Megrin (7.b-k, 8.abd)
- Pollack (6,7)
- Sea bass (6.a, 7.b,7.j; 4bc,7ad-h)
- *Nephrops* (FUs 16-17-20-22)

ADVICE IN AUTUMN FOR:

Cod (7.e-k)

Nephrops

Skates and rays

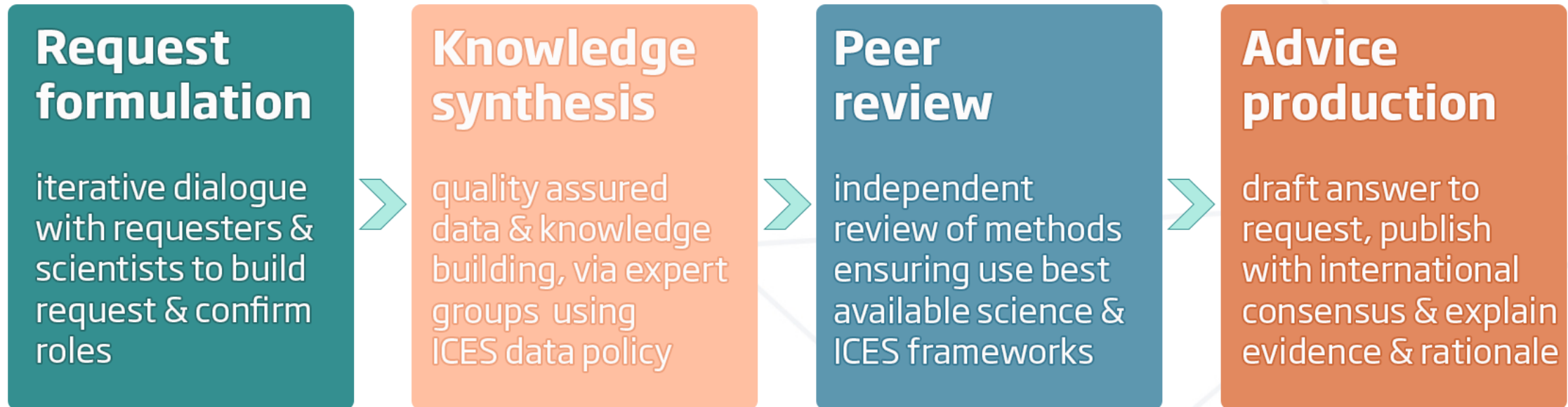
Haddock (7.b-k)

Megrin (6.b)

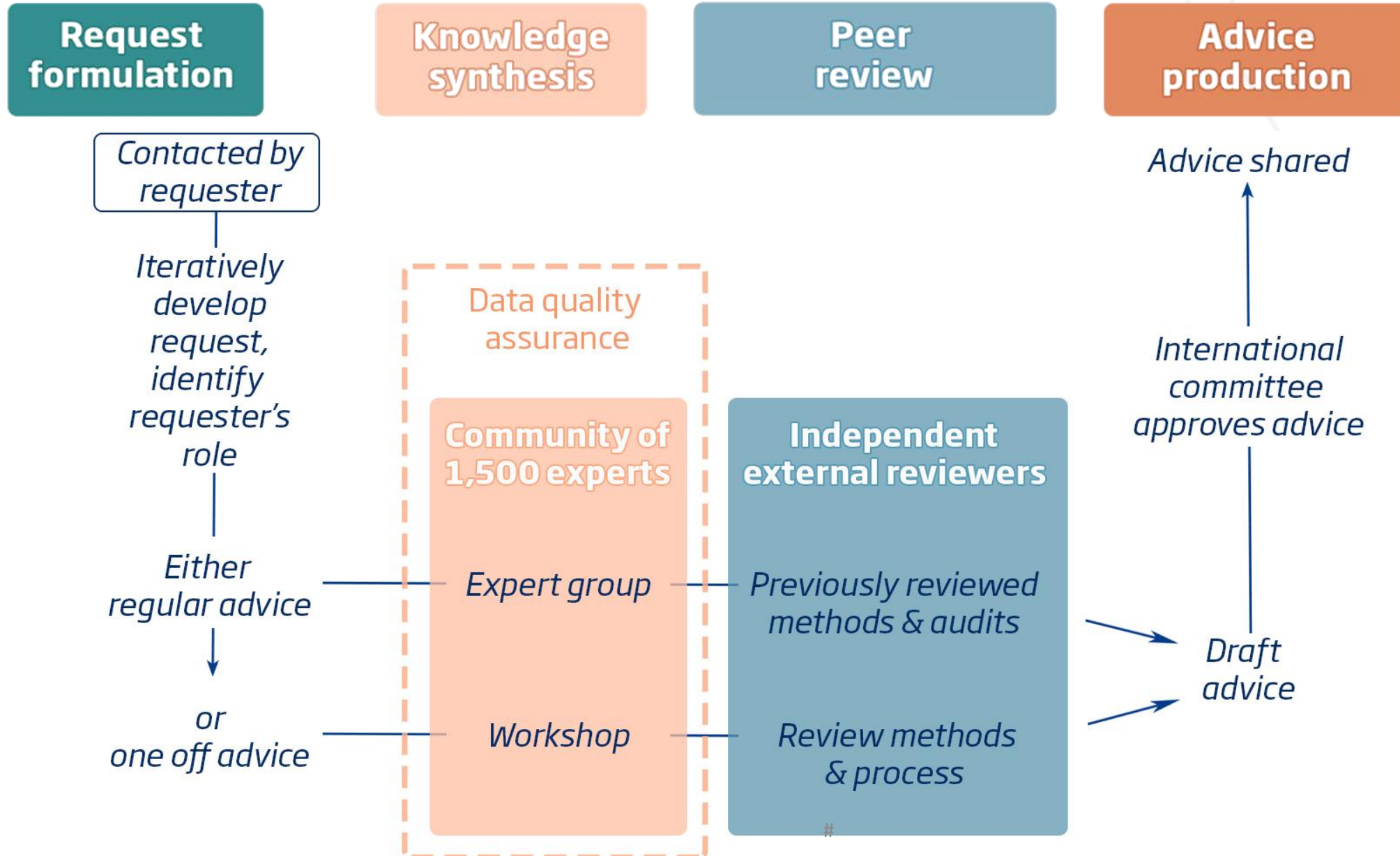
Whiting (7.e-k)

Anglerfish (3.a,4,6)

Simplified framework of ICES advisory process

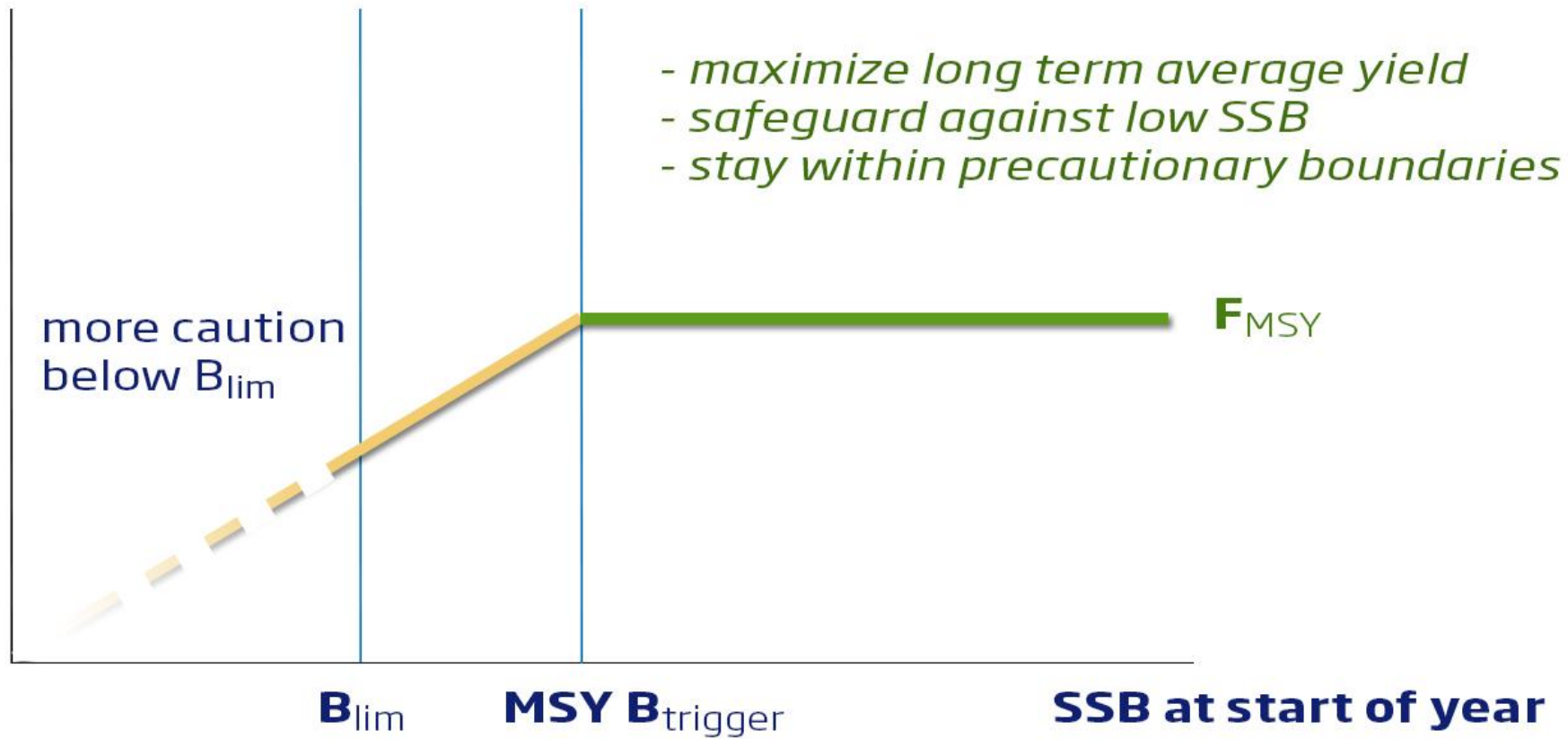


ICES advice – more detail



ICES MSY approach for category 1 & 2 stocks

F target



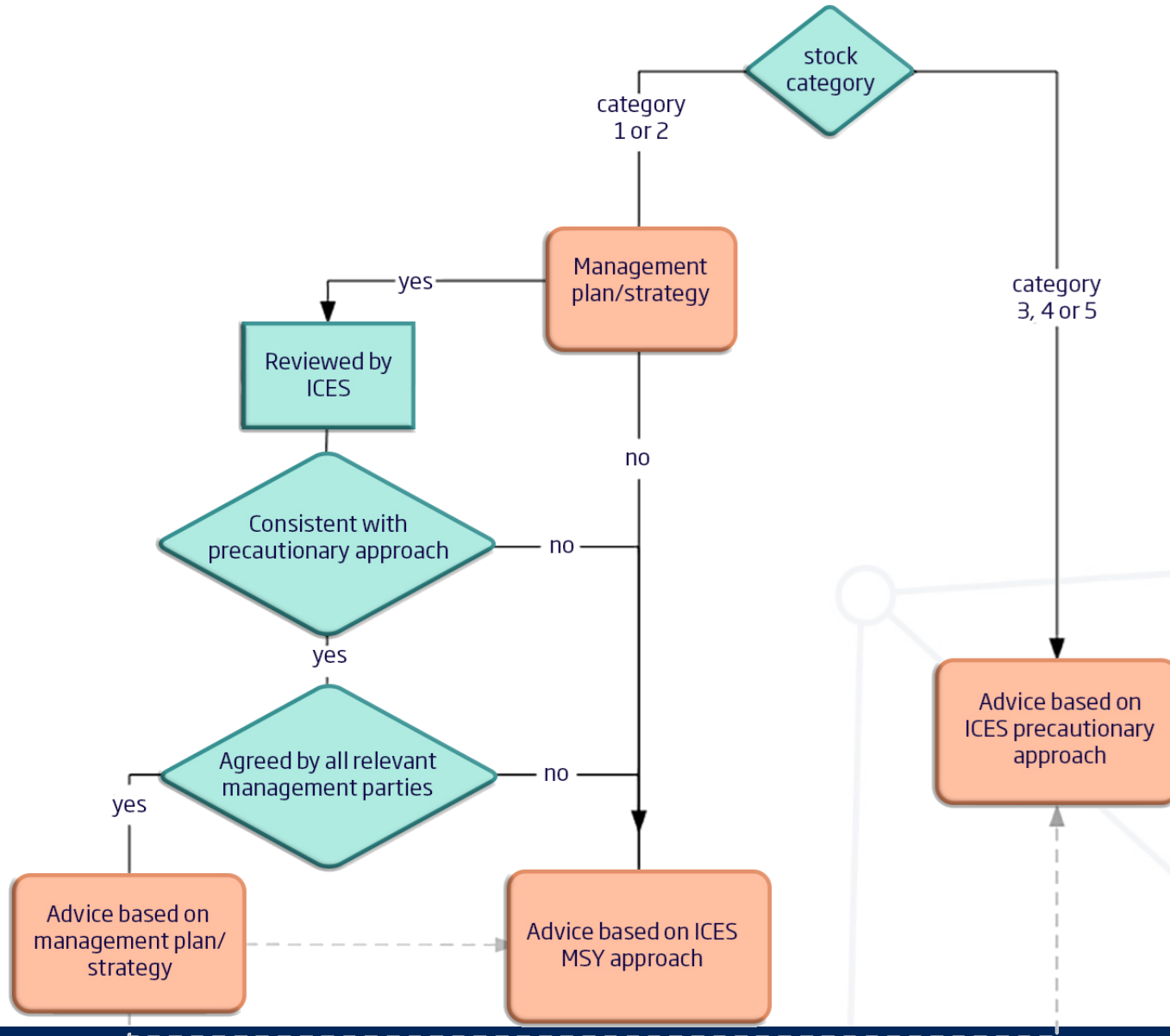
Rules for advice on fishing opportunities



The advice rules applied by ICES in developing advice on fishing opportunities depends on:

- management strategies agreed by relevant management bodies &
- the information & knowledge available for the stock

Hierarchy of Advice



Advice is based on clients requests and is consistent with their policy objectives and frameworks: e.g. EU MAP

Taking into account precautionary and MSY objectives

EU Multi Annual Plans (MAPs)

Advice on:

- status of stock & exploitation for all stocks
- advice on fishing opportunities for stocks for which TACs are set.

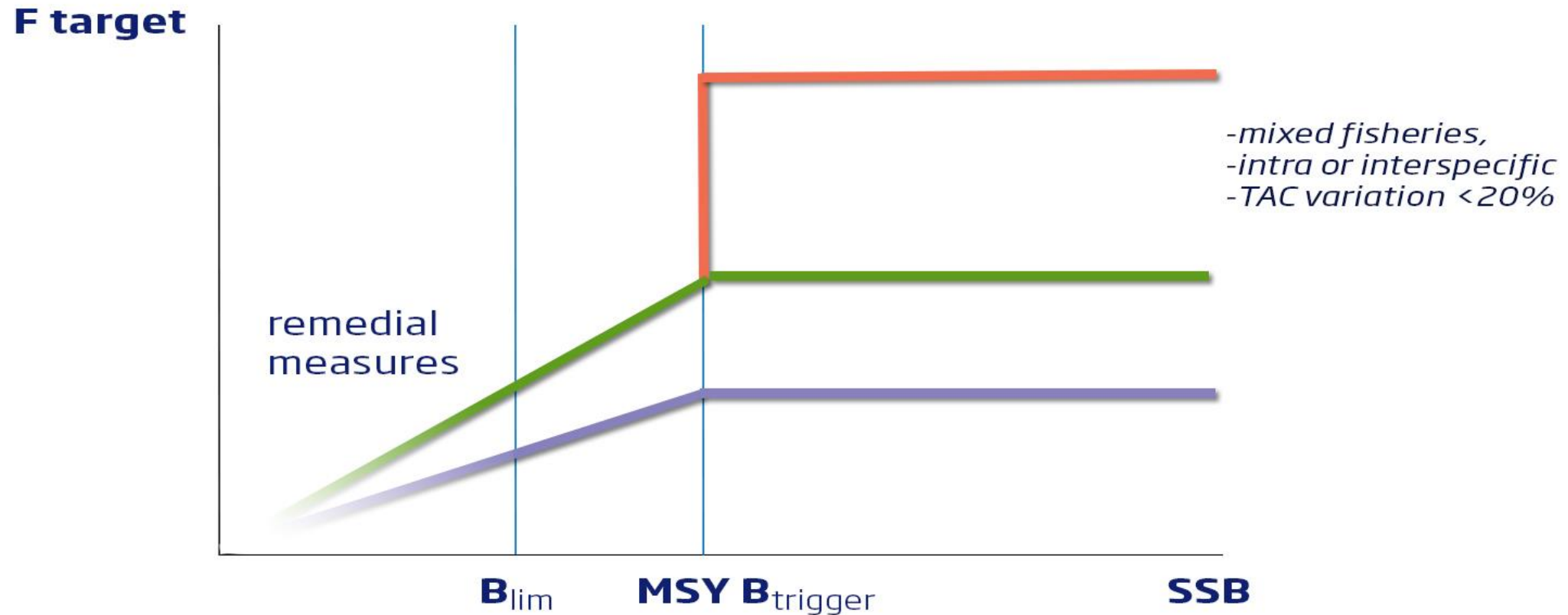
EU MAPs and F ranges

The F ranges in the MAPs are consistent with the ranges provided by ICES in 2015.

These were evaluated to result in no more than 5% reduction in long-term yield compared with MSY.

The ranges are considered precautionary:
<5% probability that the stock size will be below Blim.

ICES understanding of the harvest control rule in the MAP.



ICES interpretation of Baltic MAP harvest control rule

Type of advice depends on whether a stock is considered a target stock in the MAP or not, and whether F ranges are defined for the stock.

- a) Target stocks with F ranges & not shared with third party. Advice to be based on F range.
- b) Target stocks with no range defined or shared with third party. Advice to be based agreed management plan, ICES MSY or ICES PA.
- c) Non-target stocks with TAC & shared with third party. Advice to be based on agreed management plans, ICES MSY or ICES PA.
- d) Non-target stocks with TAC and not shared with third party. Advice to be based on ICES PA.
- e) Non-target stocks with no TAC. No advice on fishing opportunities.

West of Scotland & Rockall (6.a & 6.b)

SUMMARY

Stock	Exploitation	State of stock	Advice 2021	Advice 2020	Catch 2019	TAC 2020
Cod 6.a	X	X	0	0	2264	1279
Cod 6.b	?	?	14	14	66	74
Haddock 4, 6.a, sub. 20	✓	✓	69280	41818	35496	41819
Haddock 6.b	X	✓	6239	10472	8081	10472
Hake 4,6,7, 3.a, 8.ab,d	✓	✓	98657	104763	87238	112903
Megrim 4.a, 6.a	✓	✓	7300 (5700-7300)	8350 (6450-8350)	3381	8823
Saithe 3.a, 4, 6	X	✓	65687	88093	97178	88093
Whiting 6.b	?	?	0	0	1444	937

Colours indicate that the value for the Advice for 2021 is either above (green) or below (red) the Advice for 2020. For TAC 2020 in blue, area or species differ from the advice.

Advice provided in previous years

Stock	Advice 2021 (t)	Year advice provided
Whiting 6.b	9	2018

SUMMARY

Stock	Exploitation	State of stock	Advice 2021	Advice 2020	Catch 2019	TAC 2020
B-B Anglerfish 7, 8.a–b, 8.d	✓	?	15551	12959	10764	44307
W.anglerfish 7, 8.a–b, 8.d	✓	✓	34579 (23320-45996)	31798 (21248-42331)	22710	44307
Hake 4,6,7, 3.a, 8.ab,d	✓	✓	98657	104763	87238	112903
Megrim 7.b-k, 8.ab,d	✓	✓	19184 (12706-27748)	19982 (13218-28838)	13153	20526
Plaice 7bc	?	?	19	24	9	74
Plaice 7.fg	✓	✓	1911	2295	642	2003
Pollack 6-7	?	?	3360	3360	2219	12401
Sea bass 4.b–c, 7.a, and 7.d–h	✓	X	2000 (1680-2000)	1946 (1634-1946)	1709	-
Sole 7.bc	?	?	19	24	18	42
Sole 7.fg	✓	✓	1413 (811-2364)	1686 (1020-2665)	1213	1652
Sole 7.h-k	?	?	213	213	309	329

Colours indicate that the value for the Advice for 2021 is either above (green) or below (red) the Advice for 2020. For TAC 2020 in blue, area or species differ from the advice.

ICES advice provided in previous years

Stock	Advice 2021 (t)	Year advice provided
Plaice 7.h-k	0	2019

SUMMARY

Stock	Exploitation	State of stock	Advice 2021	Advice 2020	Catch 2019	TAC 2020
Brill 4 ,7.d and 3.a	✓	✓	2047	2559	2564	6498
Cod 4, 7.d, 20	X	X	14755	13686	35685	17679
Lemon sole 4 ,7.d and 3.a	✓	?	3742	4279	3873	6785
Plaice 7.d	X	✓	8402 (6066-11130)	9073 (6545-12029)	9047	9154
Plaice 7.e	X	✓	2177	2721	2091	9154
Sea bass 4.b–c, 7.a, and 7.d–h	✓	X	2000 (1680-2000)	1946 (1634-1946)	1709	-
Sole 7.d	✓	✓	3248	2846	2200	2797
Sole 7.e	✓	✓	1925 (1141-2197)	1478 (878-1685)	1189	1478
Sprat 7.d-e	?	?	1446	1506	1573	1506
Whiting 4, 7.d	X	✓	26304	22082	31216	28021

Colours indicate that the value for the Advice for 2021 is either above (green) or below (red) the Advice for 2020. For TAC 2020 in blue, area or species differ from the advice.

SUMMARY

Stock	Exploitation	State of stock	Advice 2021	Advice 2020	Catch 2019	TAC 2020
Cod 7.a	?	?	108	116	302	257
Haddock 7.a	✓	✓	3371 (2491-4092)	3156 (2333-3830)	2450	3156
Plaice 7.a	✓	✓	2846	5640	1002	2970
Sea bass 4.b–c, 7.a, and 7.d–h	✓	X	2000 (1680-2000)	1946 (1634-1946)	1709	-
Sole 7.a	✓	✓	768	561	463	457
Whiting 7.a	X	X	0	0	1261	721

Colours indicate that the value for the Advice for 2021 is either above (green) or below (red) the Advice for 2020.

ICES advice provided in previous years

Stock	Advice 2021 (t)	Year advice provided
Whiting in 7.a	0	2019

Deep-sea stocks

SUMMARY

Stock	Exploitation	State of stock	Advice 2021	Advice 2020	Catch 2019	TAC 2020
Alfonsinos - NEA	?	?	224	224	294	252
Black scabbardfish - NEA	?	?	4506	5914	4317	5311
Greater forkbeard - NEA	?	?	861	1346	1850	-
Blackspot seabream 6, 7, 8	?	X	0	0	98	105
Roundnose grenadier 6, 7, 5.b, 12.b	?	?	3177	3971	689	4839
Blue ling 5.b, 6-7	✓	✓	11522	11150	3218	-
Tusk 6.b	?	?	280	280	112	-

Colours indicate that the value for the Advice for 2020 is either above (green) or below (red) the Advice for 2019. For TAC 2019 in blue, area or species differ from the advice.

ICES advice provided in previous years

Stock	Advice 2021 (t)	Year advice provided
G. Silver smelt 7-10, 12, 6.b	193	2019
Tusk 4,7-9,3.a, 5.b,6.a,12.b	8627	2019
Ling 6-9,12,14,3.a,4.a	18516	2019

All advice available online at:



<http://www.ices.dk>

Click on

ADVICE → Latest advice

For advice release dates, follow link:

On right hand side of screen ->

- WHAT'S IN THE ADVICE: READ THE BASIS FOR ICES ADVICE
- VIEW ADVICE RELEASE DATES
- FIND ICES ADVICE IN THE LIBRARY
- STOCK DATABASE