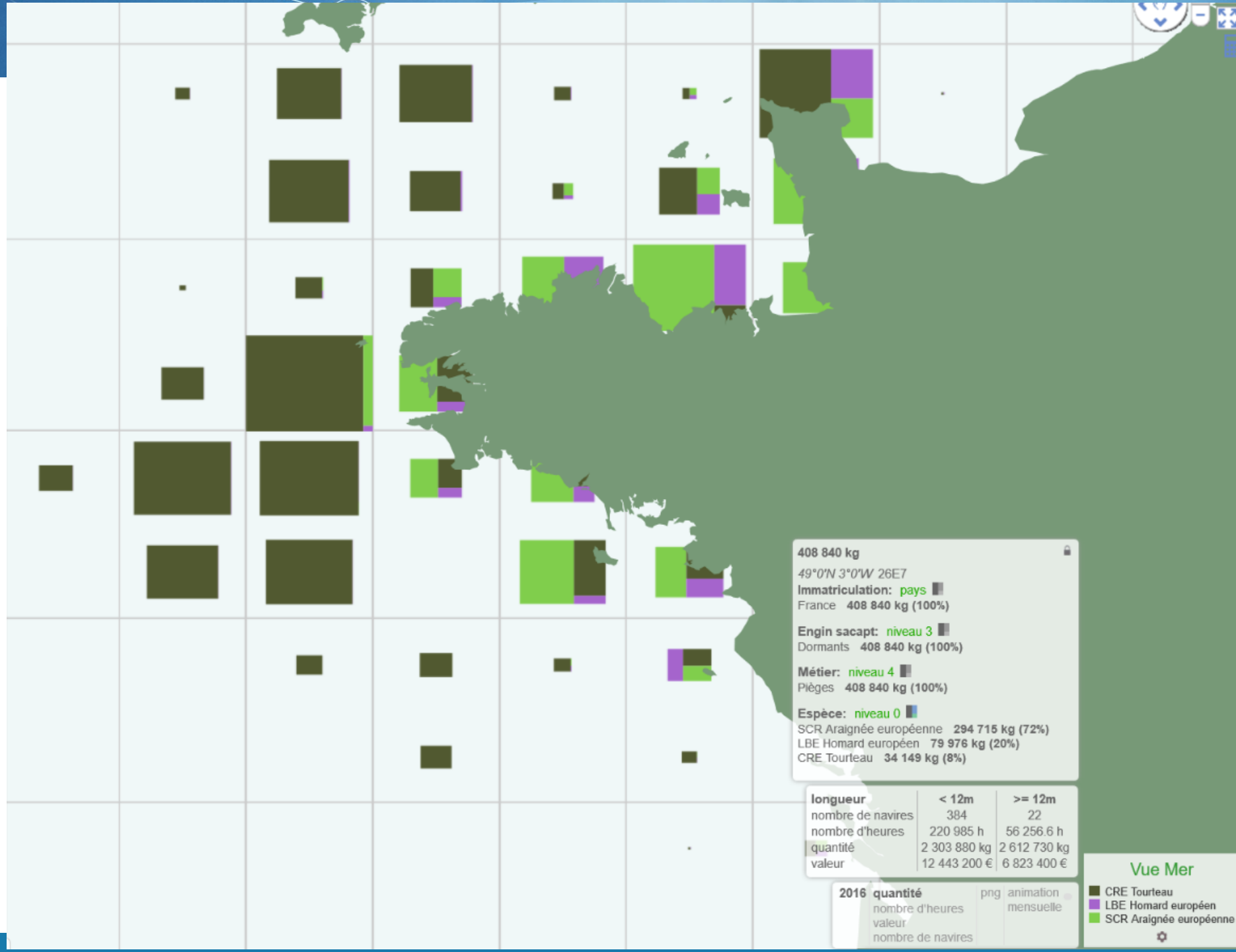


Edible crab in France

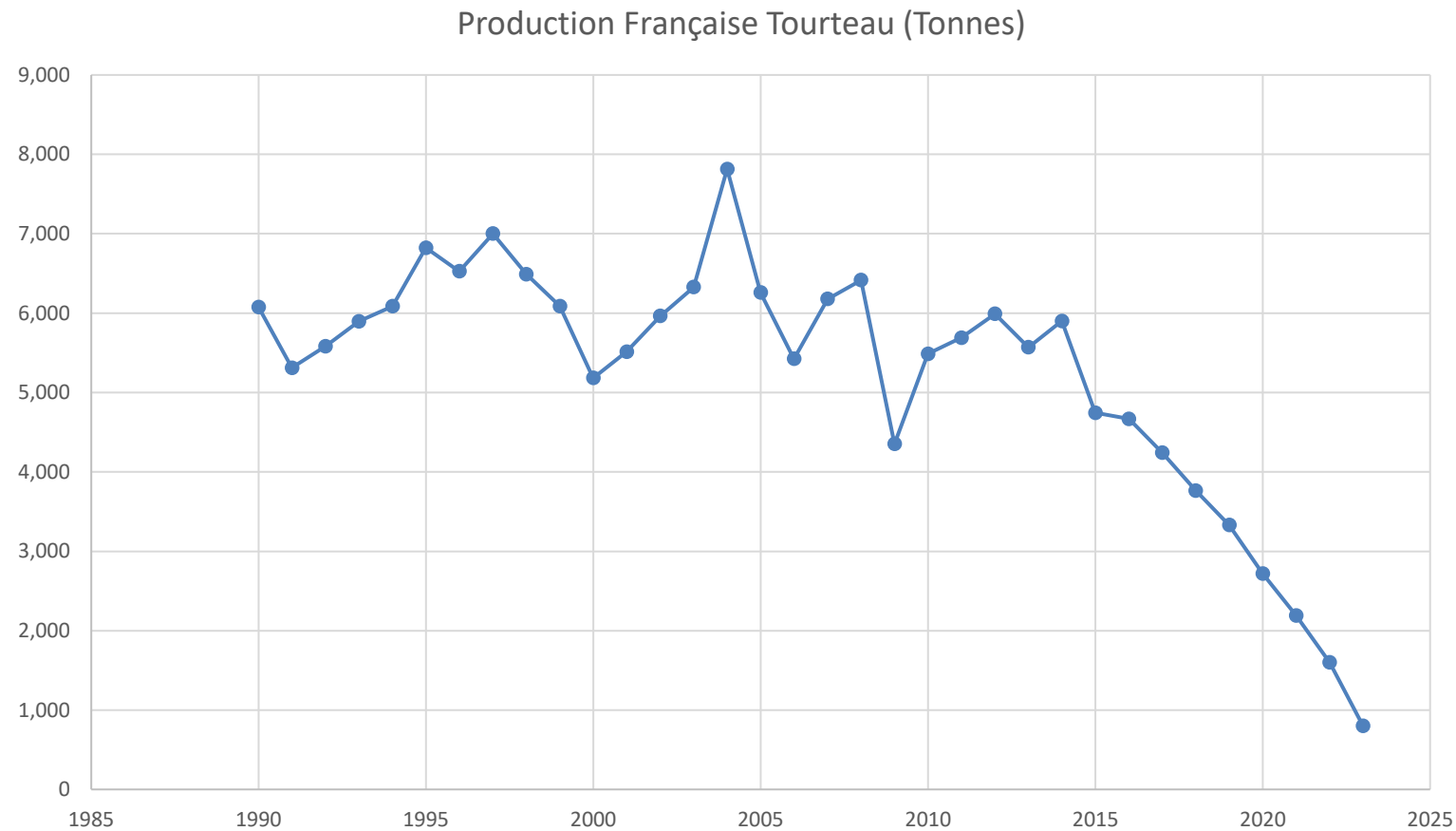
Production and Trend in the abundance.

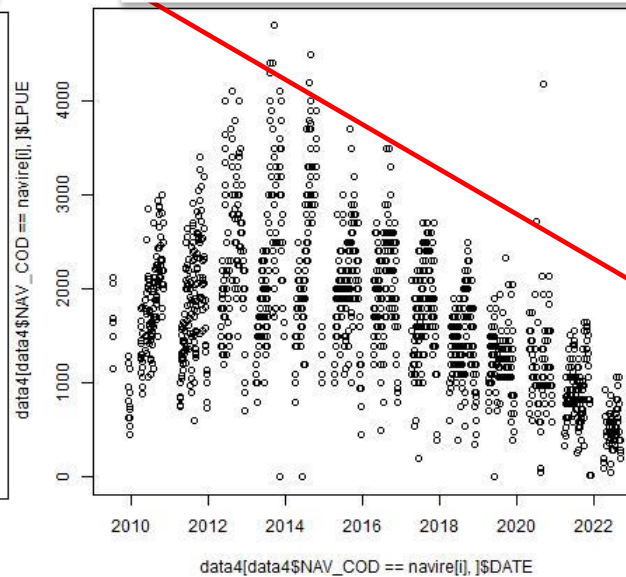
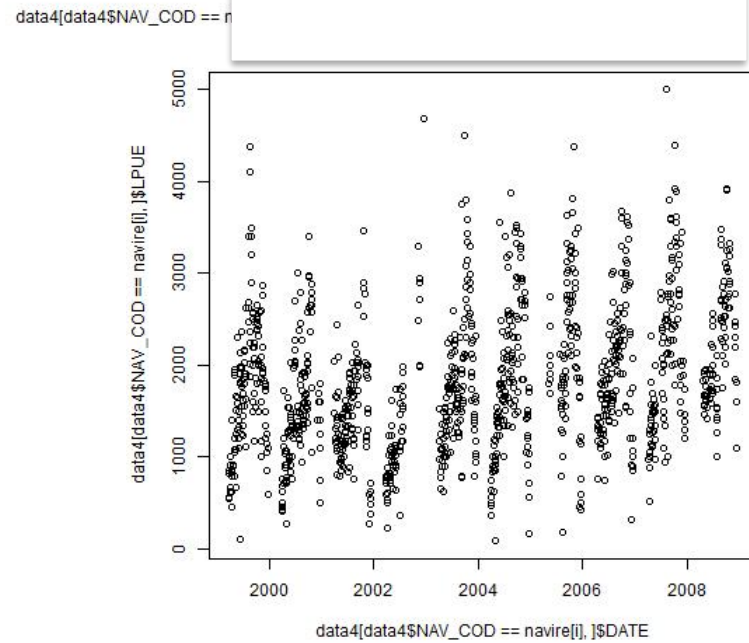
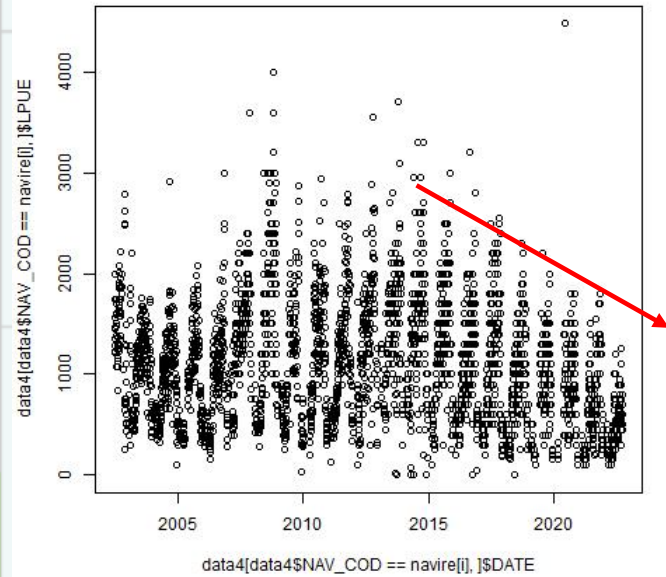
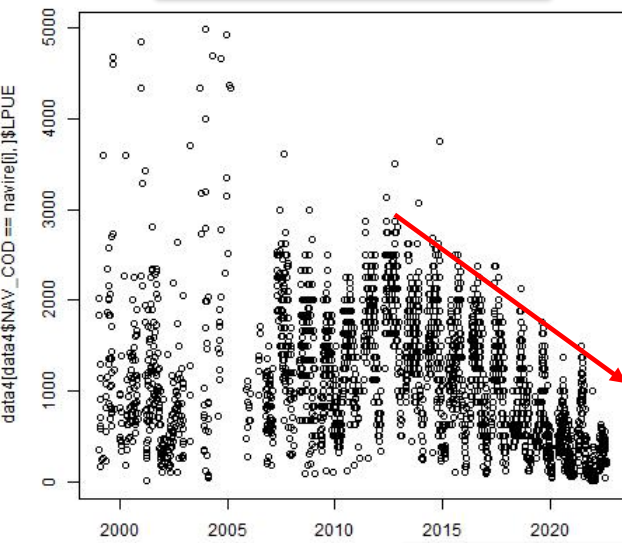
- Licences are used to control the number of boats
 - Licences for crustaceans, categorising species is under discussion (Regional)
 - MLS 140 north 48°, 130 south, 150 in eastern Channel and Baie of Granville
 - 1200 pots maximum, parlour forbidden or limited to 200/250 pots by fisherman
 - Discussion in NWRAC
 - Survey
 - Quantity of claws
- Collectors, perhaps a new index



Production française

In 2023, 800 tons.





0 kg
13°0'W 26E7
riculation: pays
408 840 kg (100%)
sacapt: niveau 3
nts 408 840 kg (100%)
niveau 4
408 840 kg (100%)
niveau 0
raignée européenne 294 715 kg (72%)
mar européen 79 976 kg (20%)
urteau 34 149 kg (8%)

joueur	< 12m	>= 12m
bre de navires	384	22
bre d'heures	220 985 h	56 256.6 h
ntité	2 303 880 kg	2 612 730 kg
ur	12 443 200 €	6 823 400 €

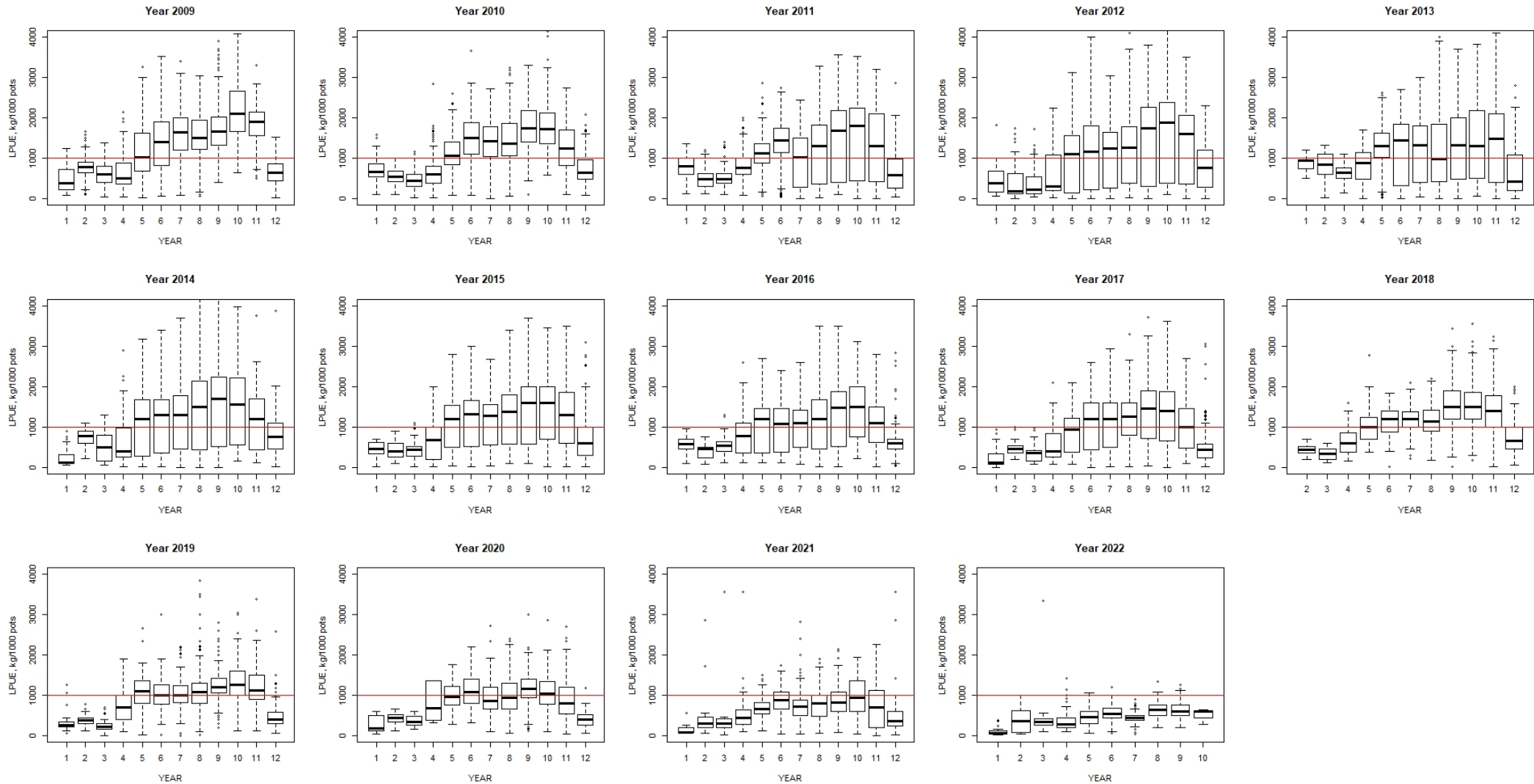
2016 quantité
nombre d'heures
valeur
nombre de navires

png animation
mensuelle

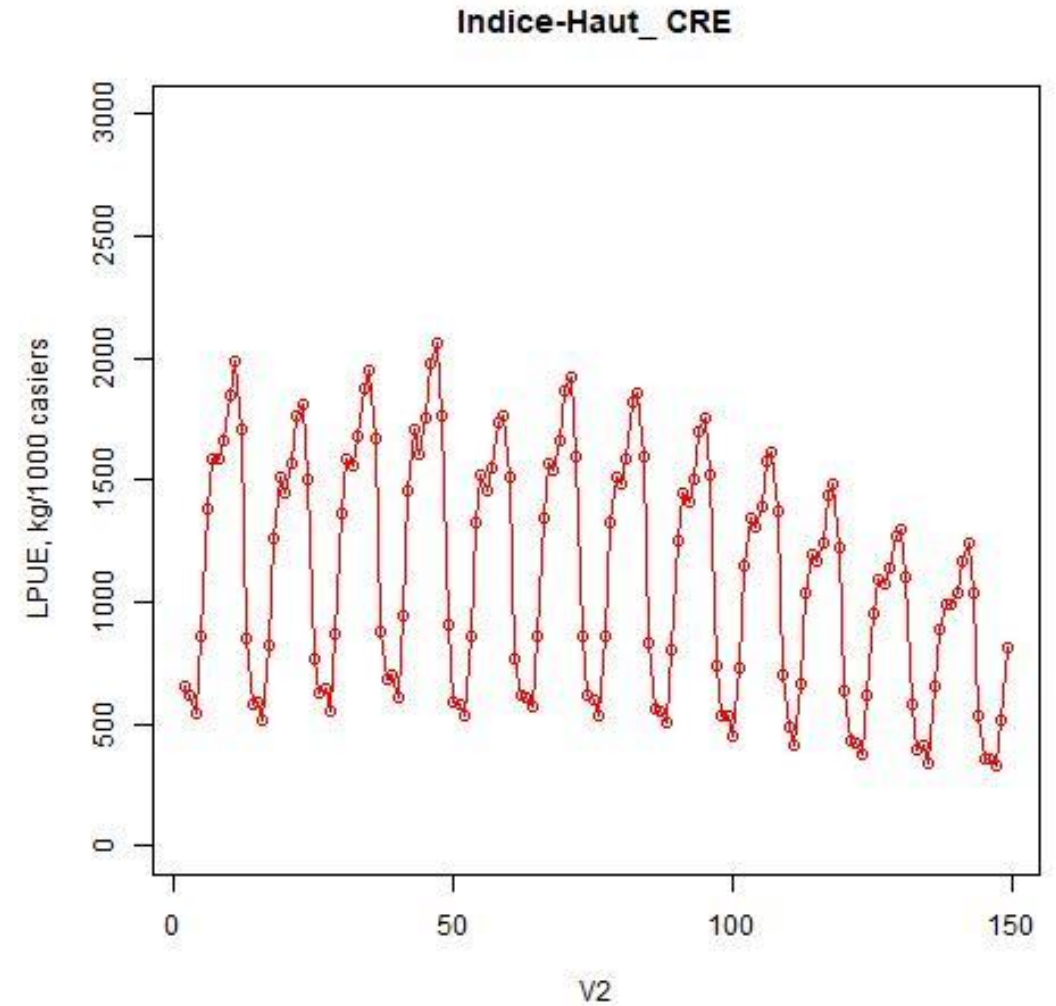
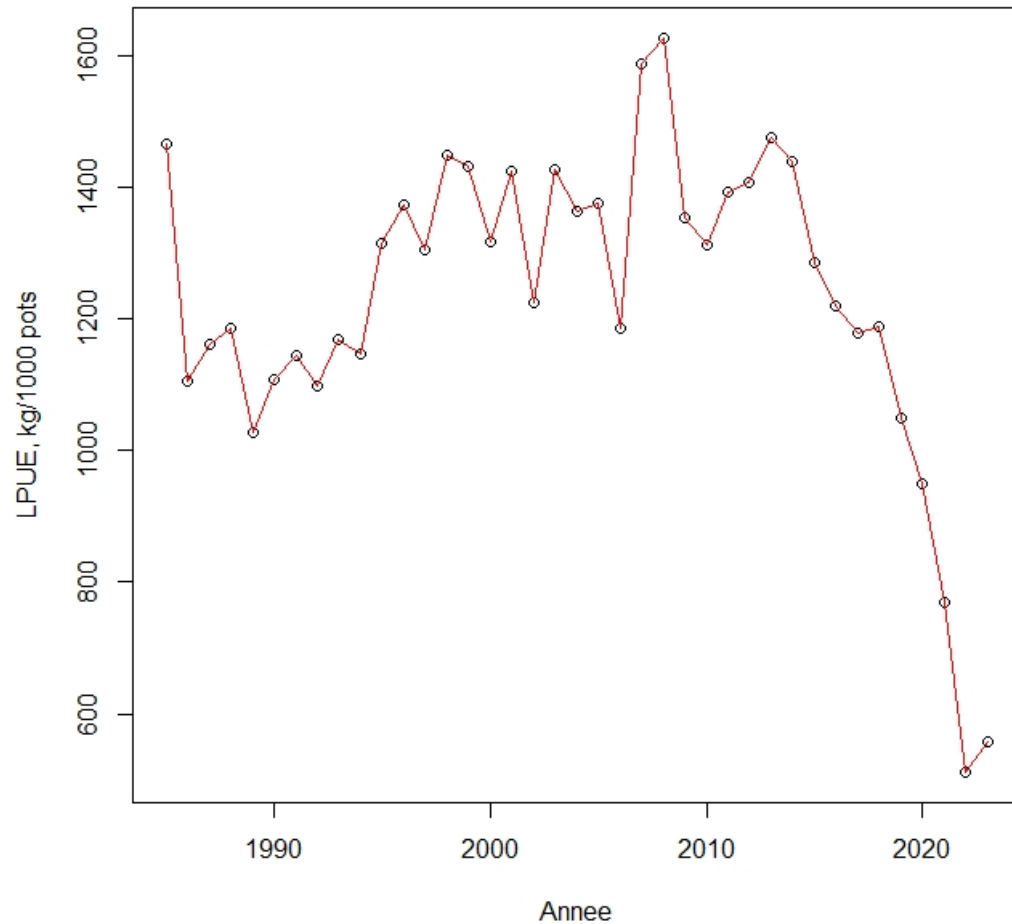
Vue Mer

- CRE Tourteau
- LBE Homard européen
- SCR Araignée européenne

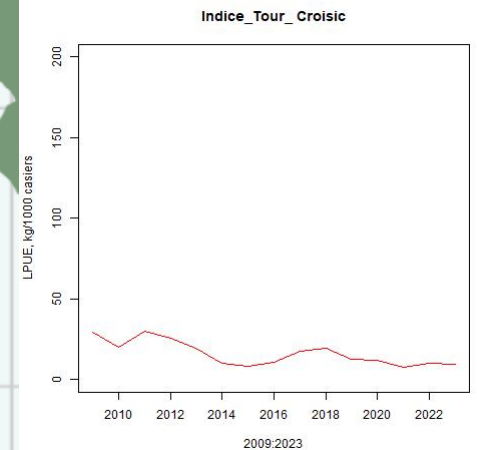
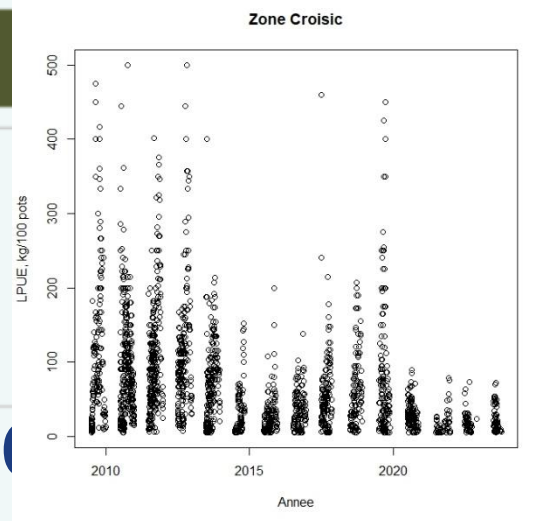
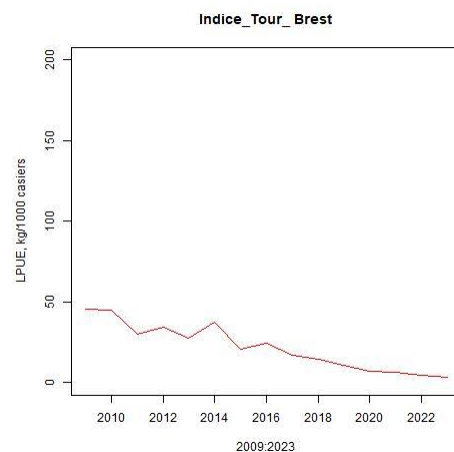
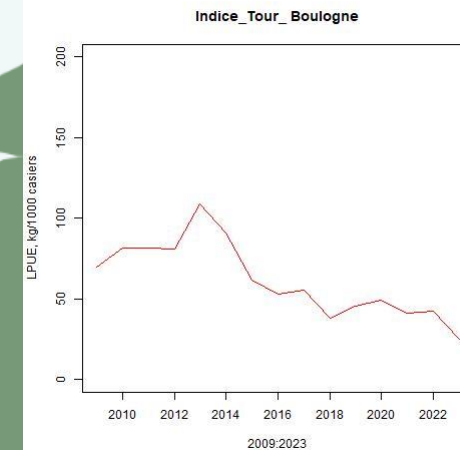
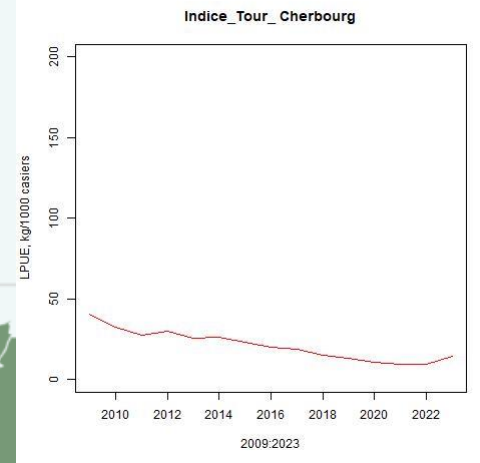
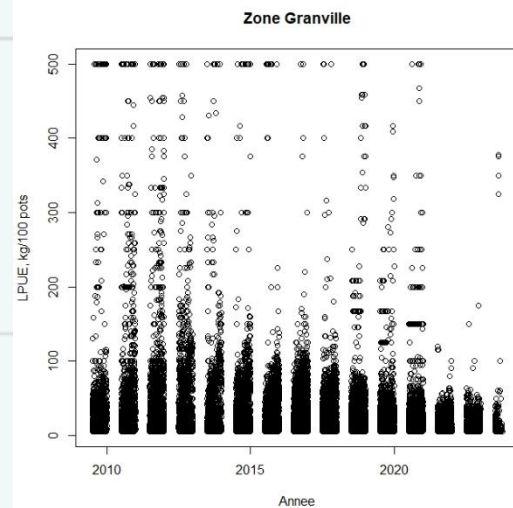
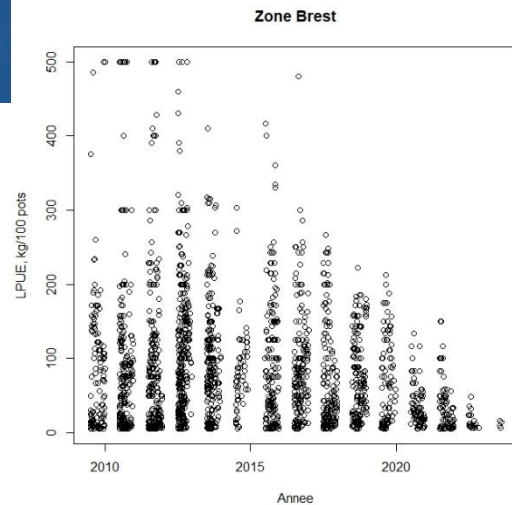
Tendance annuelle de la flotte du large



Indice d'abondance



Indice d'abondance



valeur | 12 443 200 € | 6 823 400 €

2016 quantité
nombre d'heures
valeur
nombre de navires

png animation
mensuelle

Vue Mer

■ CRE Tourteau
■ LBE Homard européen
■ SCR Araignée européenne

Conclusion

The brown crab stock show a real decline.

At the same time, the effort of french fleet targetting brown crab are stayed the same.

The trend is the same in all areas, coastal or offshore, Bay of Biscay or Western Channel.

The size structure in offshore area seems to be similar, no change.
Many boats stopped their activities due to economic balance.
Only a bycatch today

Works are looking the recruitment or disease as the main explanation of the situation.

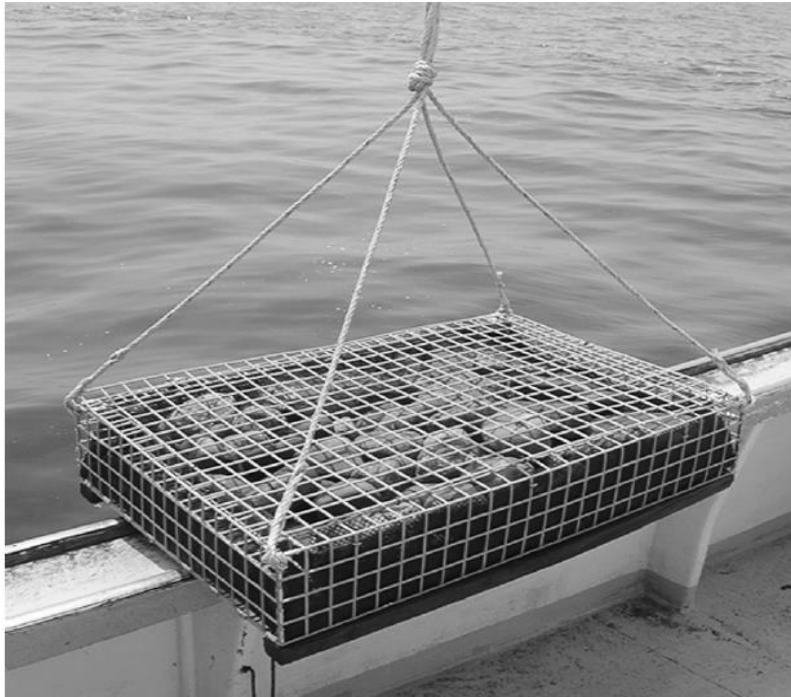
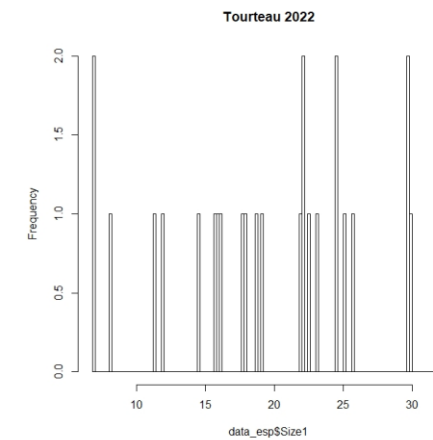
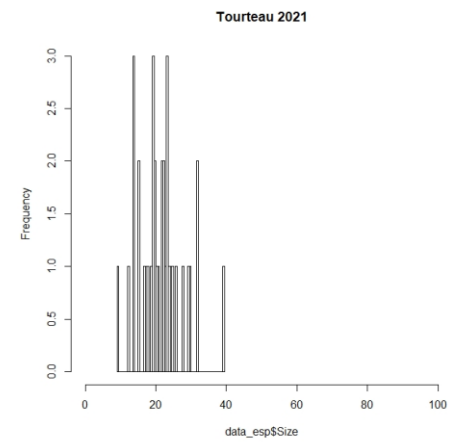
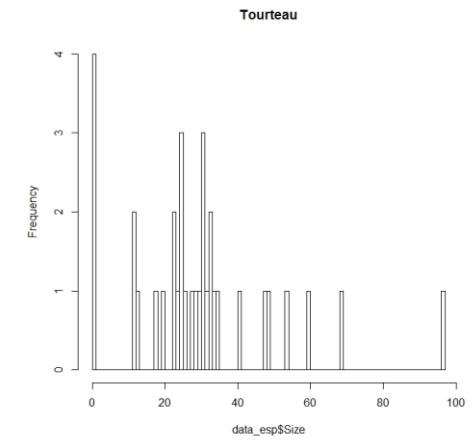
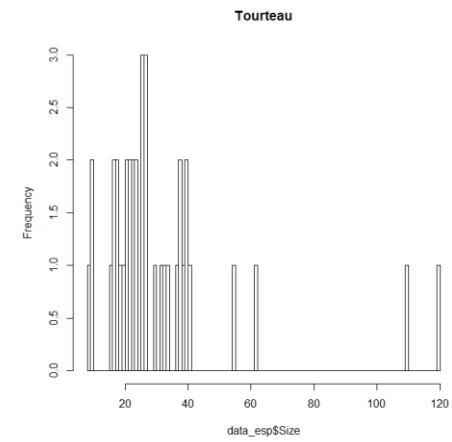


Fig. 1 Passive postlarval collector. Dimensions are 61.0 cm × 91.5 cm × 15.0 cm.



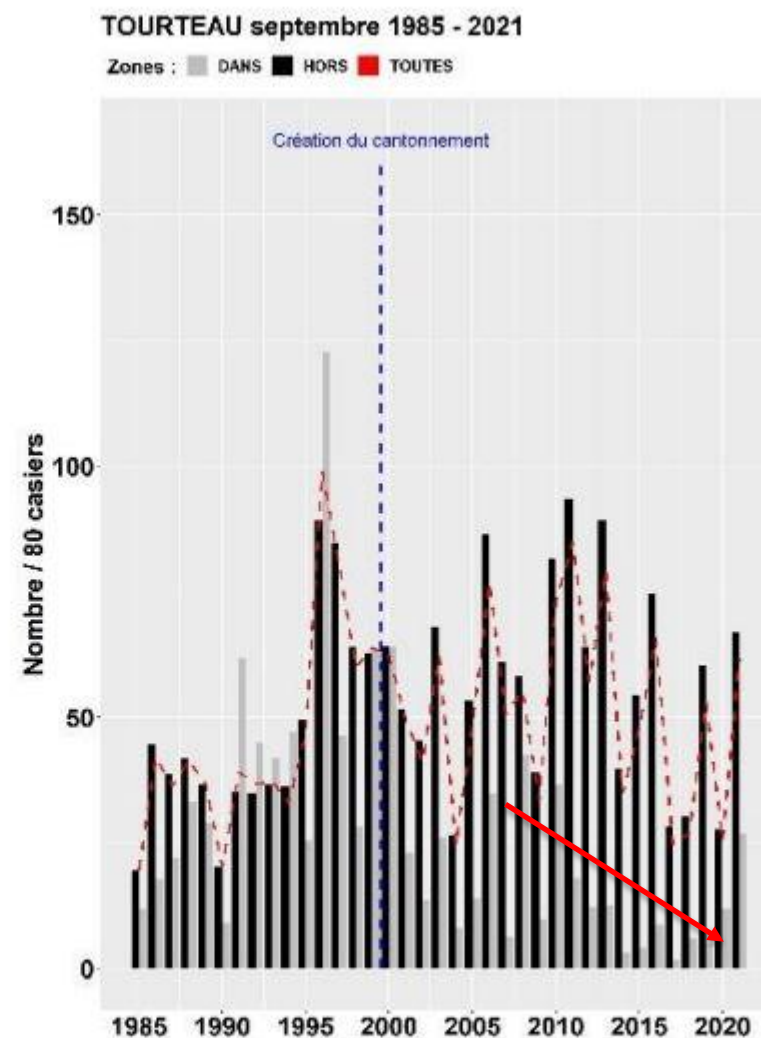
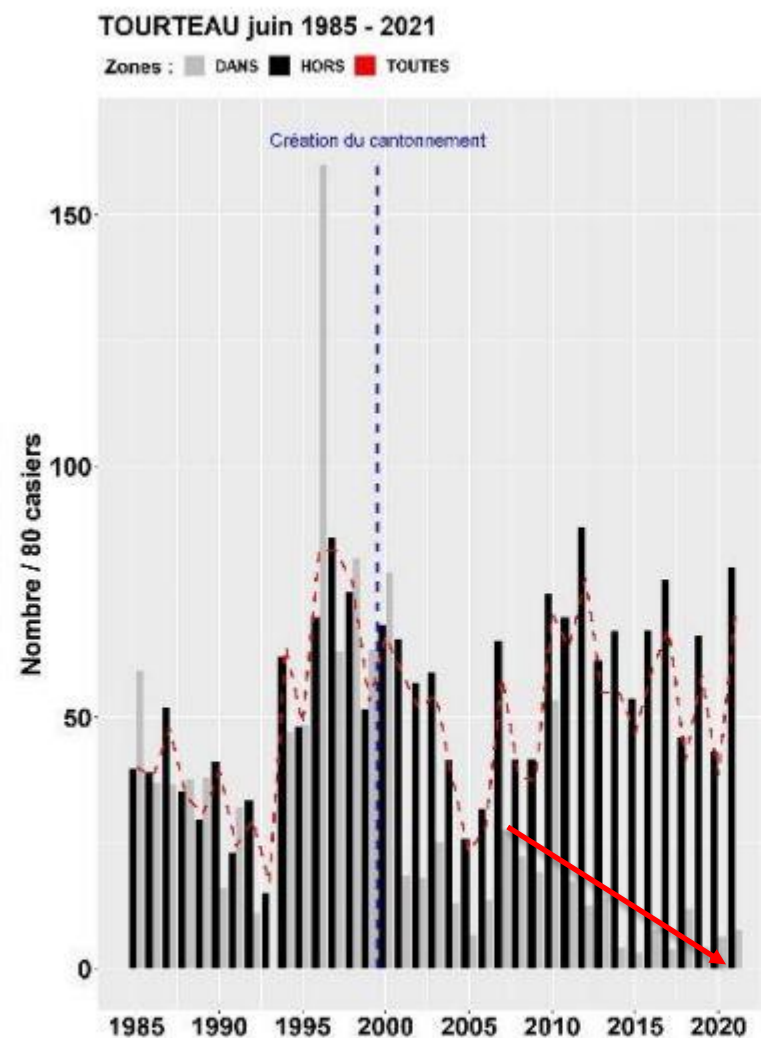


Figure D-13 : Évolution de l'abondance du tourteau "Dans" et "Hors" réserve depuis 1985 (- - tous secteurs confondus). Le pointillé bleu correspond à l'année de création du cantonnement en 2000.

Figure D-8 : Localisation des points échantillonnés.