

Raywatch

Laura Lemey, Noémi Van Bogaert,
Loes Vandecasteele en Klaas Sys



ILVO
Institute for Agricultural
and Fisheries Research



Vlaanderen
is landbouw & visserij

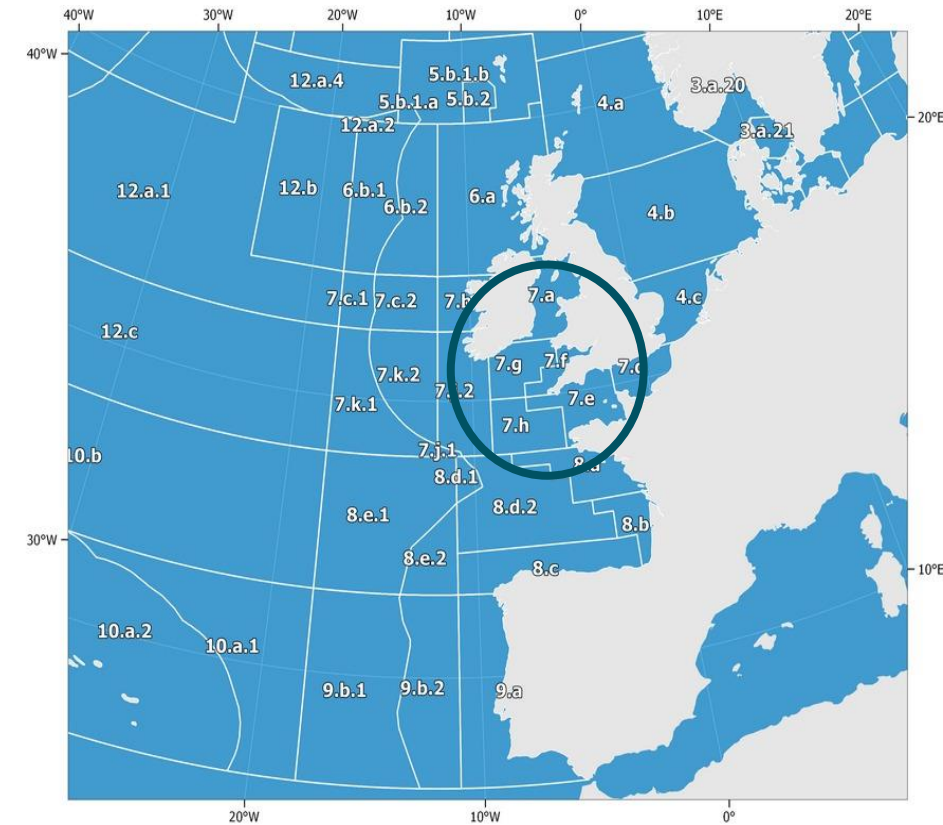
Motivation

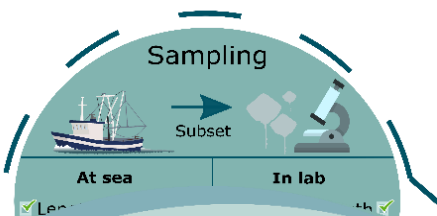


- ◆ Landing Obligation
- ◆ Choke species
- ◆ Exemption
- ➔ **Requirement: more data needs to be collected for rays**
- ◆ Roadmap for rays and skates
- ◆ Interreg-2-seas SUMARiS

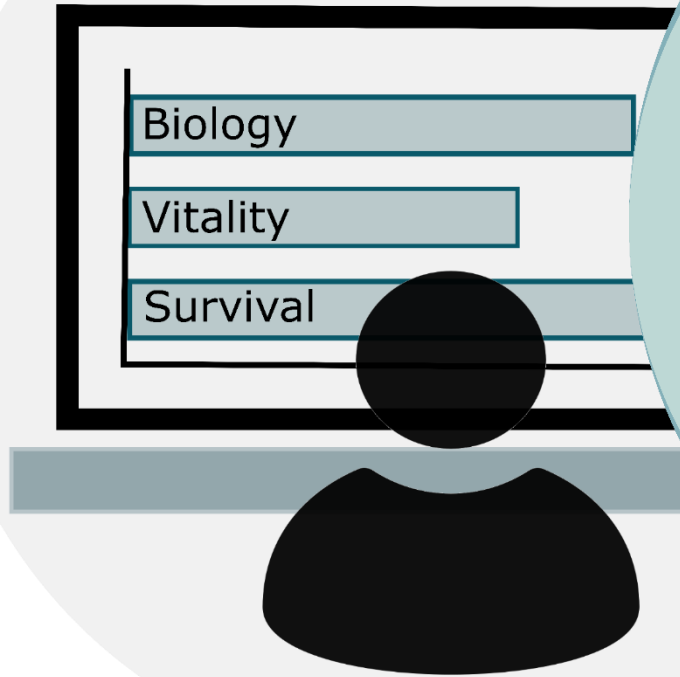
Goal

- Two year EMFF funded project
- Integrate skate data collection in NDGP
- More species specific biological, catch and vitality data
 - 7 different species
 - Western waters and English Channel





Data analysis



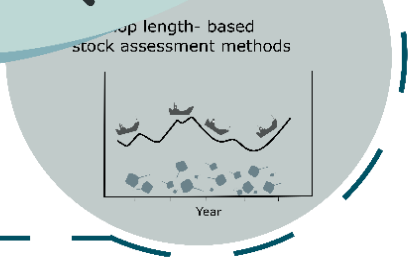
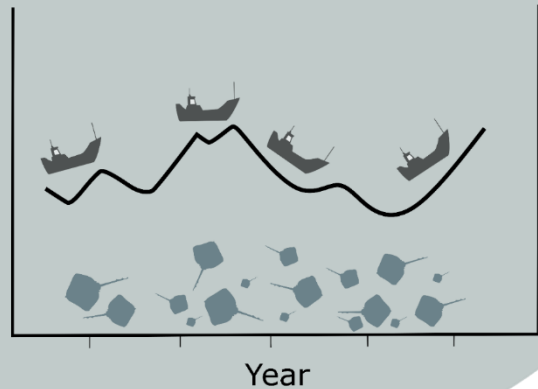
Communication & evaluation

Raywatch

- Presentation of results
- Advise to stakeholders
- Identification training fish a

Modelling

- ✓ Extrapolate landings and discards to fleet level
- ✓ Develop length- based stock assessment methods





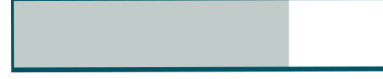
Thornback ray



Blonde ray



Small eyed ray



Spotted ray



Sandy ray



Cuckoo ray

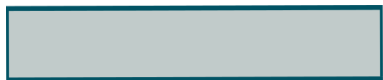


Undulate ray





Thornback ray



Blonde ray



Small eyed ray



Spotted ray



Sandy ray



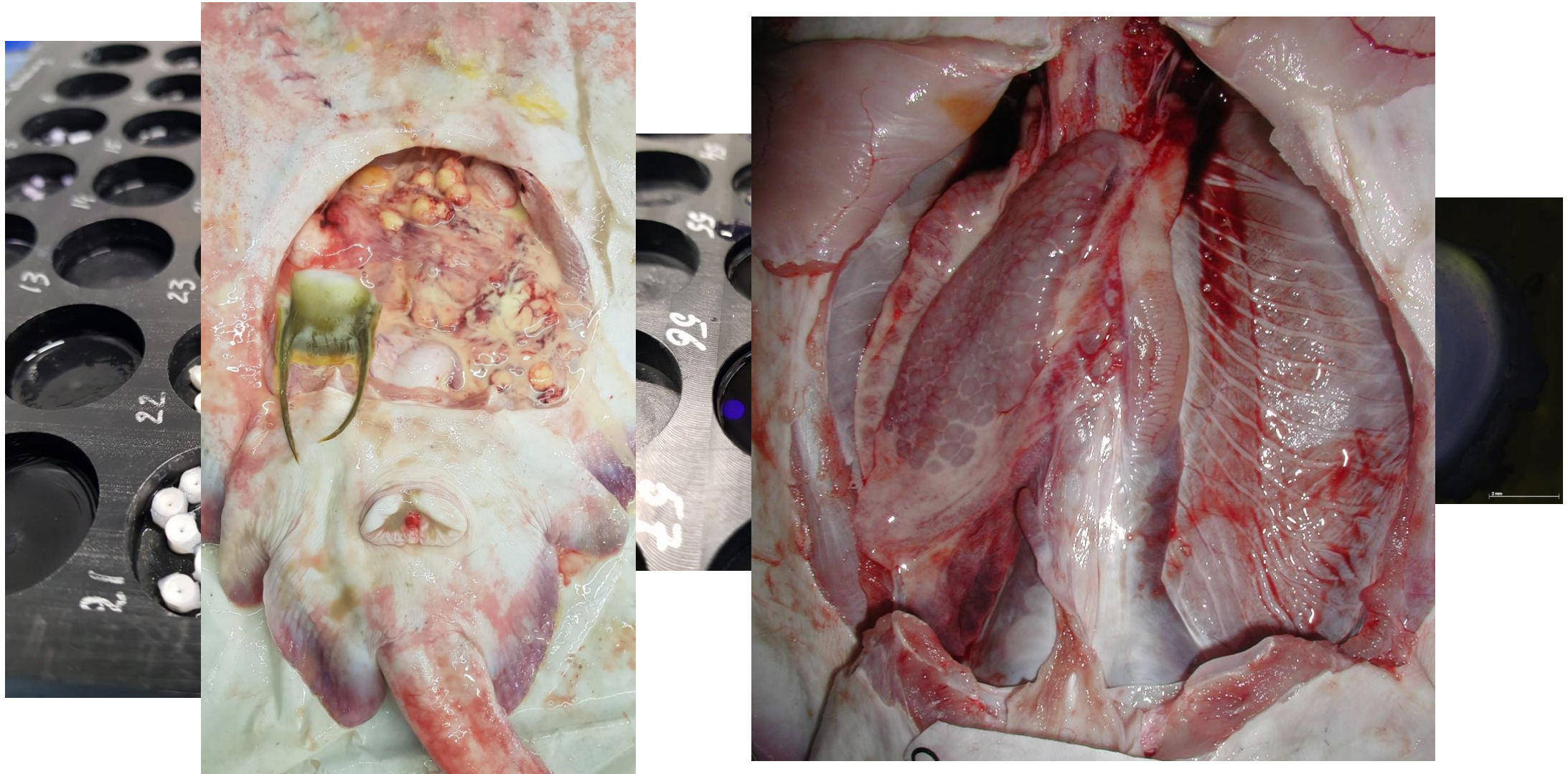
Cuckoo ray



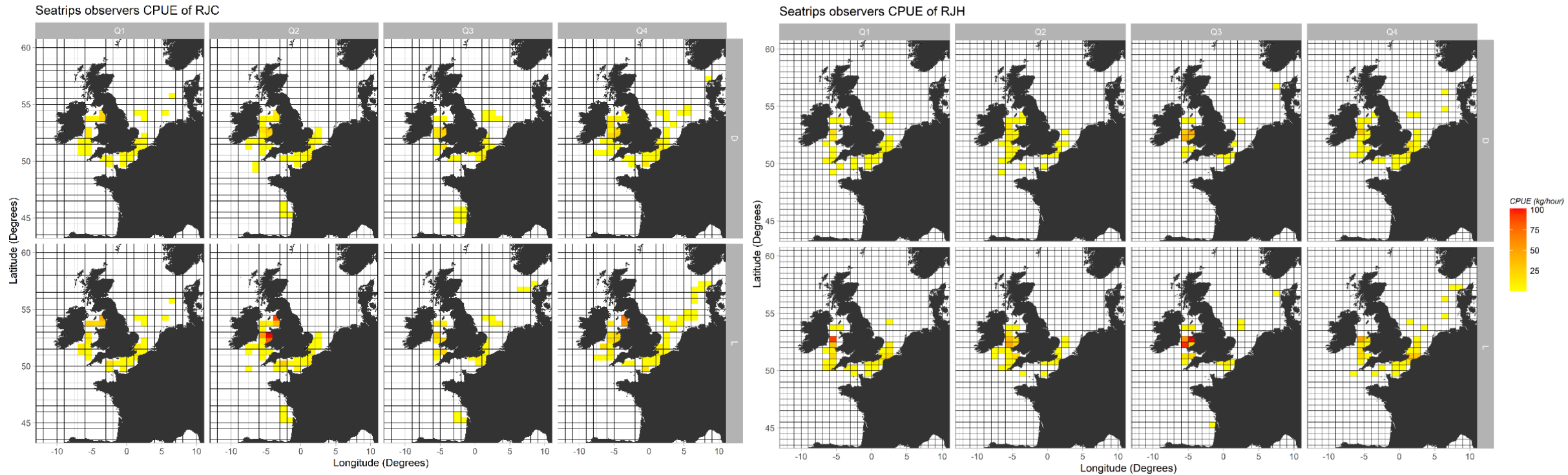
Undulate ray



Age reading - maturity staging



Preliminary results



Seatrips observers CPUE of RJC



Seatrips observers CPUE of RJH

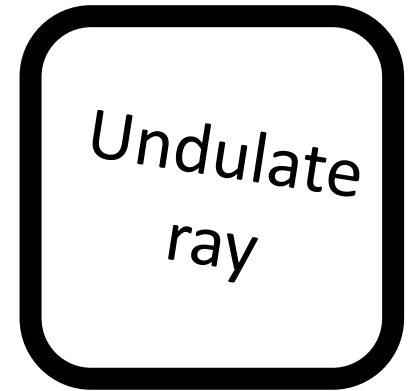
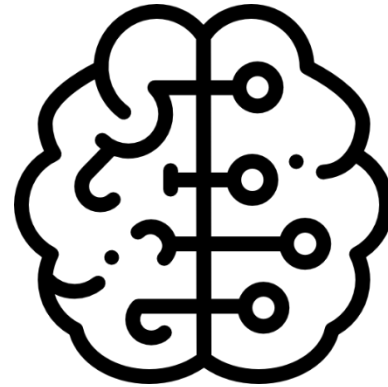
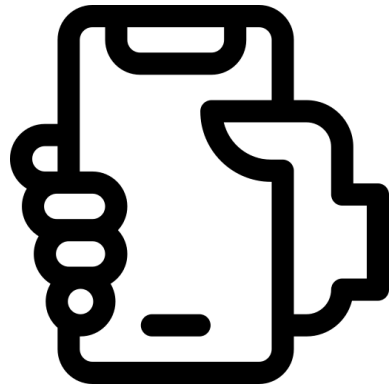


Maturity

Species	Maturity stage	Male	Female	Total
Blonde ray	Immature	10	10	20
	Developing	9	8	17
	Capable to reproduce	0	3	3
	Active	2	1	3
	Spent	0	NA	0
	Post-laying	NA	2	2
	Regenerating	NA	5	5
	Total	21	29	50
Thornback ray	Immature	17	19	36
	Developing	2	3	5
	Capable to reproduce	4	0	4
	Active	3	0	3
	Spent	0	NA	0
	Post-laying	NA	0	0
	Regenerating	NA	0	0
	Total	23	22	45

RayScan

A ray and skate identifying app



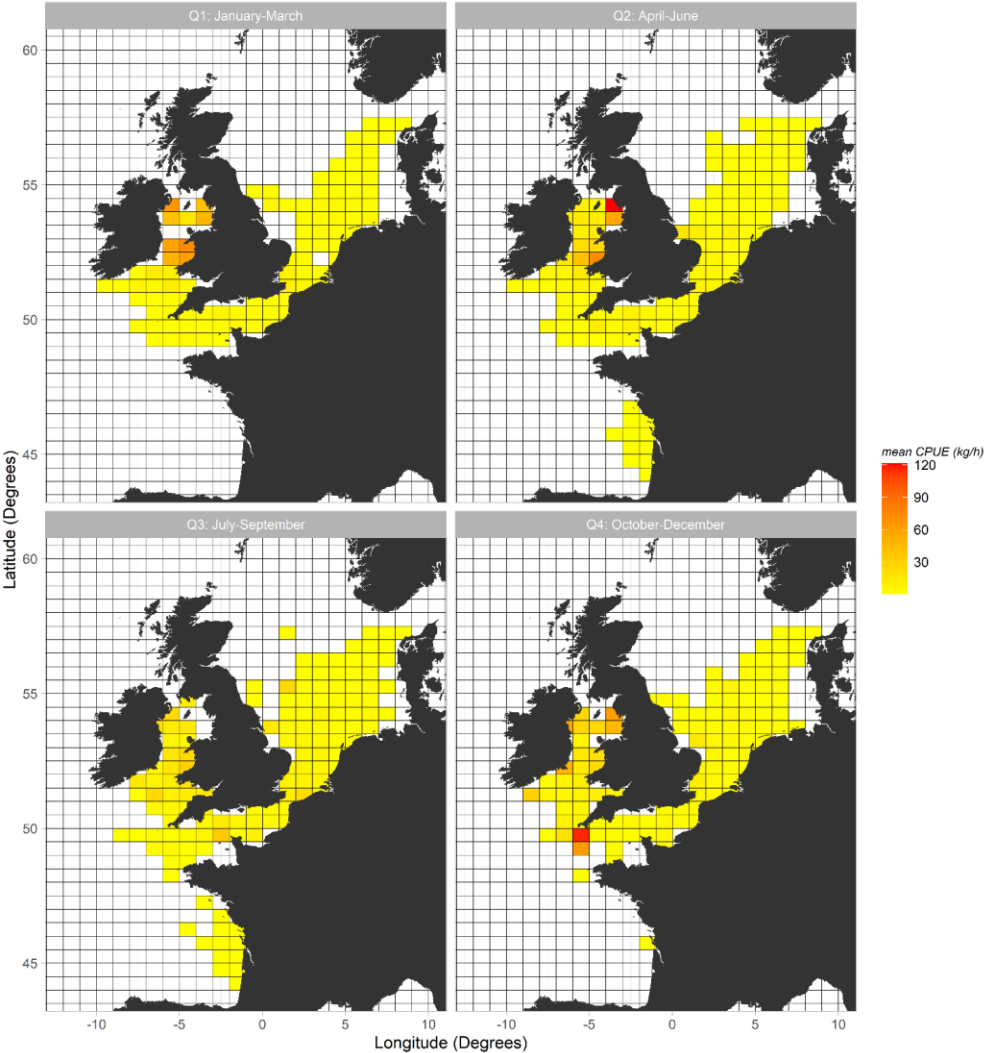
ILVO

Thank you!

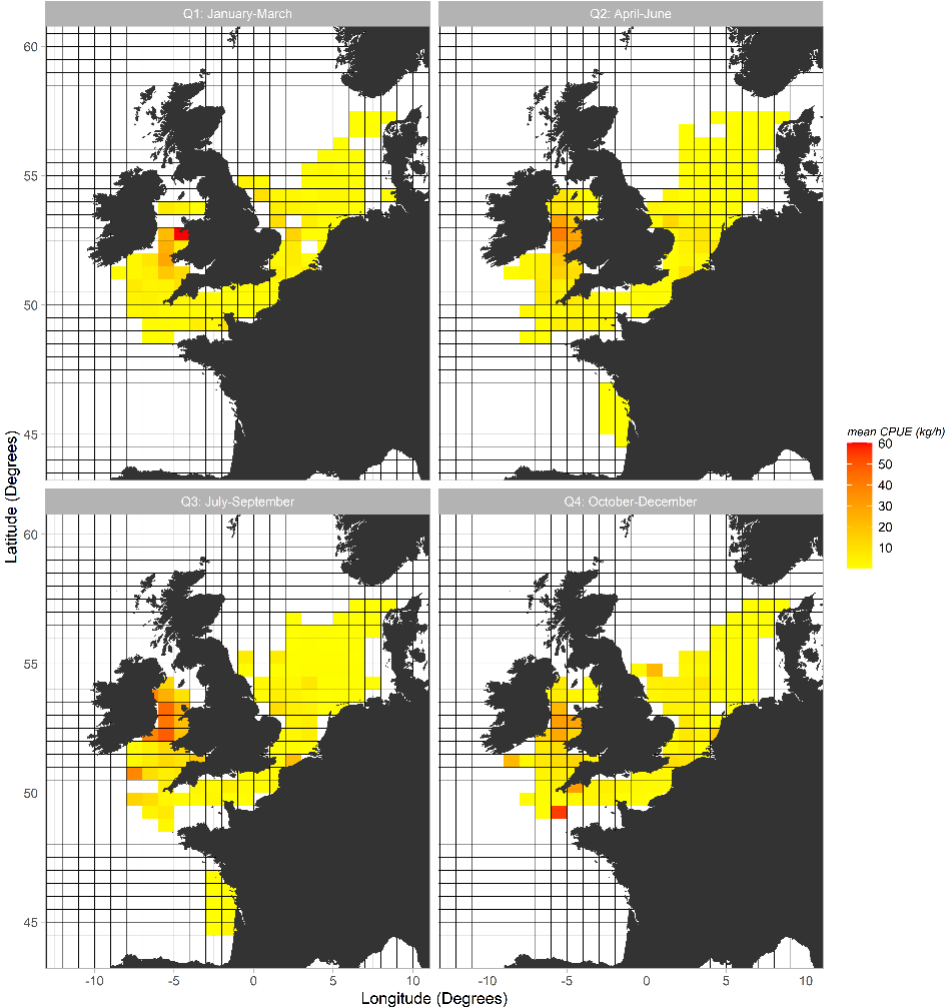
laura.lemey@ilvo.vlaanderen.be



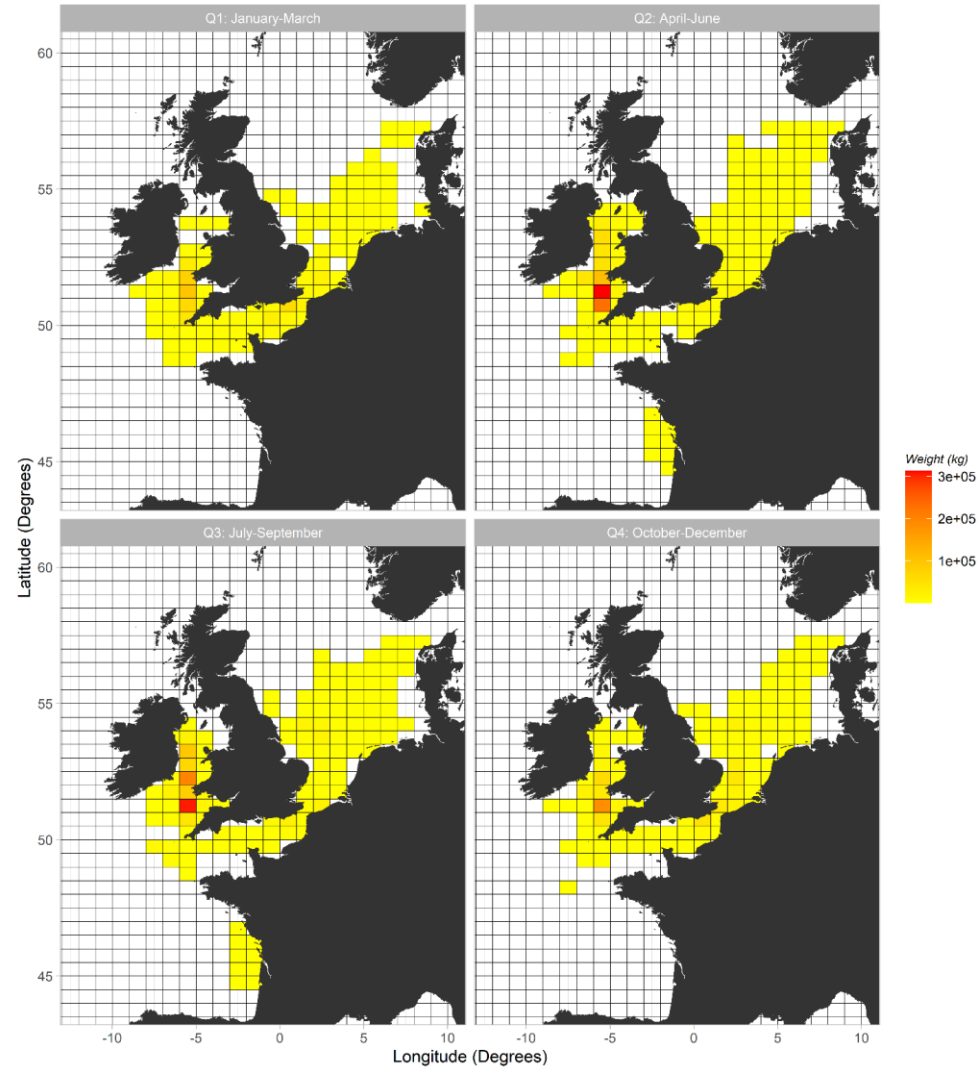
Fleet 2013-2019: CPUE of RJC



Fleet 2013-2019: CPUE of RJH



Fleet 2013-2019: Landings of RJH



Fleet 2013-2019: Landings of RJC

