

AZTI

MEMBER OF
BASQUE RESEARCH
& TECHNOLOGY ALLIANCE

 **Interreg**
Atlantic Area
European Regional Development Fund



CONSERVING ATLANTIC BIODIVERSITY BY SUPPORTING INNOVATIVE SMALL - SCALE FISHERIES CO-MANAGEMENT (CABFISHMAN). EAPA_134/2018

Led by AZTI

Arantza Murillas - Maza
Amurillas@azti.es

Estanis Mugerza
emugerza@azti.es

NWWAC | 08TH MARCH 2022

HOW DOES CABFISHMAN SUPPORT SSF FACING SOCIAL CHALLENGES?



- ✓ Under the new approach for a **sustainable blue economy** (COM (2021) 141) strong challenges should be addressed by SSF
 - ✓ Climate neutrality and zero pollution
 - ✓ Circular economy
 - ✓ Biodiversity and investing in nature
 - ✓ Coastal resilience
 - ✓ Responsible food systems
- ✓ Other **SOCIAL** challenges **LINKED** to **sustainable blue economy**
 - ✓ SSF Governance enhancement
 - ✓ SSF social sustainability
 - ✓ SSF to recognize its total value including social values (women in value, cultural values, ...)
 - ✓ SSF social role in coastal communities

HOW CABFISHMAN ?

SSF ECONOMIC AND SOCIAL GROWTH

SSF Food provisioning value

market based

- Apps, tools for getting track, catch data in real time
- Digitalisation tools
- A common method (AA) to assess the economic value of the fishing activity and fishing grounds
- Operational data. **Economic/Social valuation (added value) of FOOD PROVISION ES**

Cultural heritage Value

non-market based

- Mendeley DB – inventory (1000 registries)
- A common Valuation Tool
- 2 valuation methods (CV, Travel cost method)
- Operational data
 - **CULTURAL ES** assessment – 3.000 surveys
- GEO TOOL -Forum

SSF SUSTAINABILITY BLUE ECONOMY

Climate Change

- A common method to assess the contribution of the SSF Economics to the GLOBAL CLIMATE CHANGE - CARBON FOOTPRINT
- Operational data
 - Assessment of the impact on **REGULATING ES**
- GEO TOOL - Forum

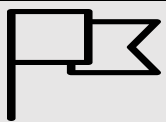
Impact assessment

- 1 method to consider all potential impacts into a holistic approach: an impact matrix
- Operational data
 - Matrix applied across the AA – identification the most/less harmful fishing gears
- Stakeholders engagement
- Including **REGULATING ES** trade offs
- GEO TOOL – Forum

CABFISHMAN SUPPORTING TOOLS – SOCIAL DIMENSION

- ✓ Economic but also **social dependency** of the areas
- ✓ **Total social value assessment** enhancing the attractiveness of the SSF through providing more visibility to the sector
- ✓ **Social importance for coastal communities** exceeding the traditional economic contribution
- ✓ **Social sustainability of the sector**
- ✓ **SSF fishing areas** – other uses of the Sea areas
- ✓ **Governance and,**
- ✓ **Social dimension** in decision making





WHERE WE END

Setting up policy recommendations for the management of SSF in the whole EU AA

Which social value to protect?

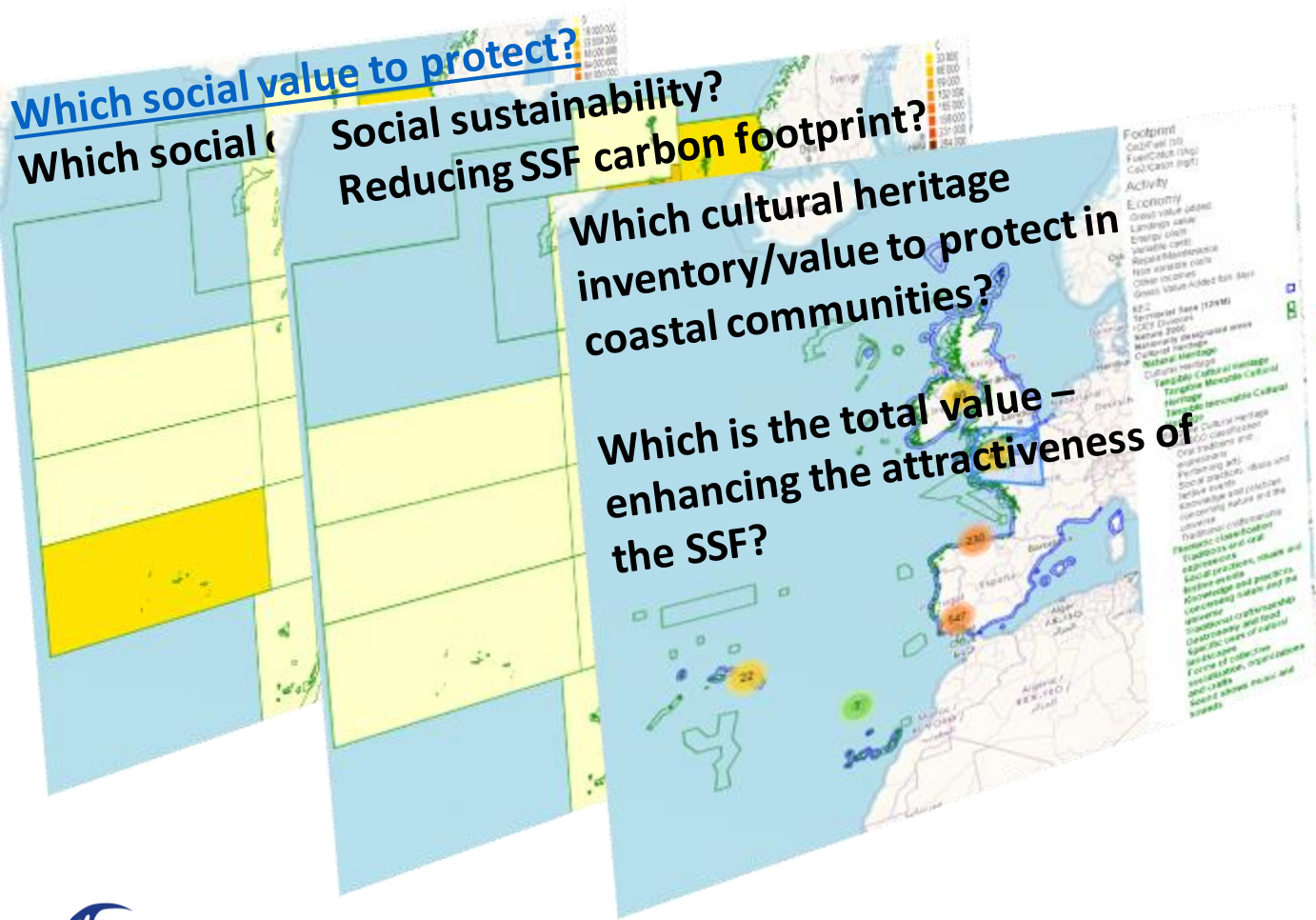
Which social

Social sustainability?

Reducing SSF carbon footprint?

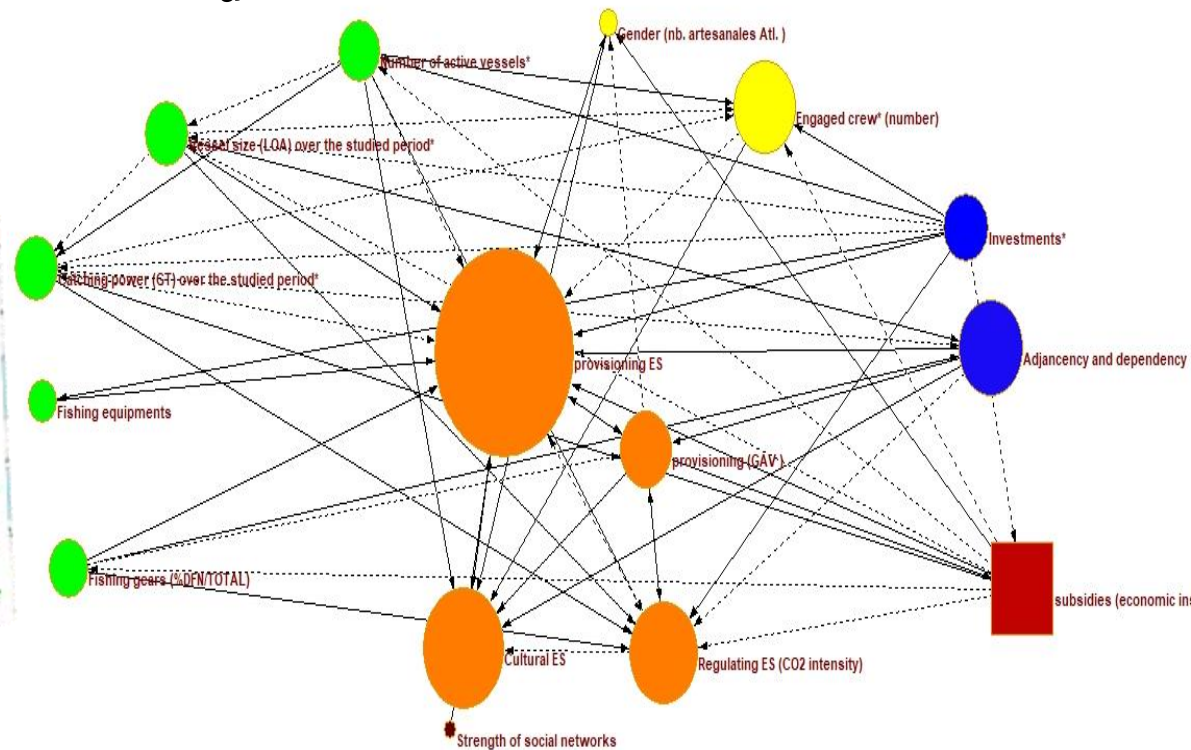
Which cultural heritage inventory/value to protect in coastal communities?

Which is the total value – enhancing the attractiveness of the SSF?



Where the system will go if things continue as they are (steady state)?

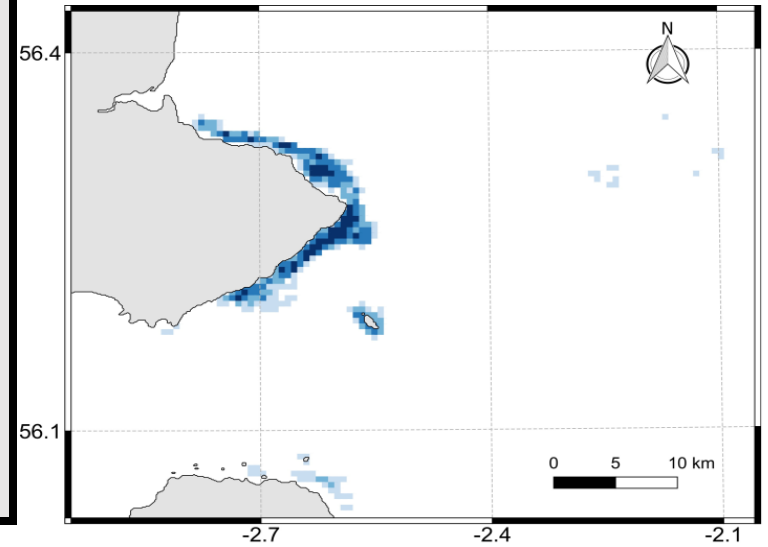
What-if including/changing social dimension?



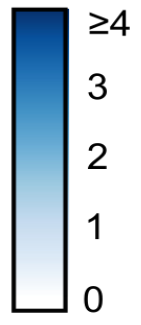


WHERE WE END

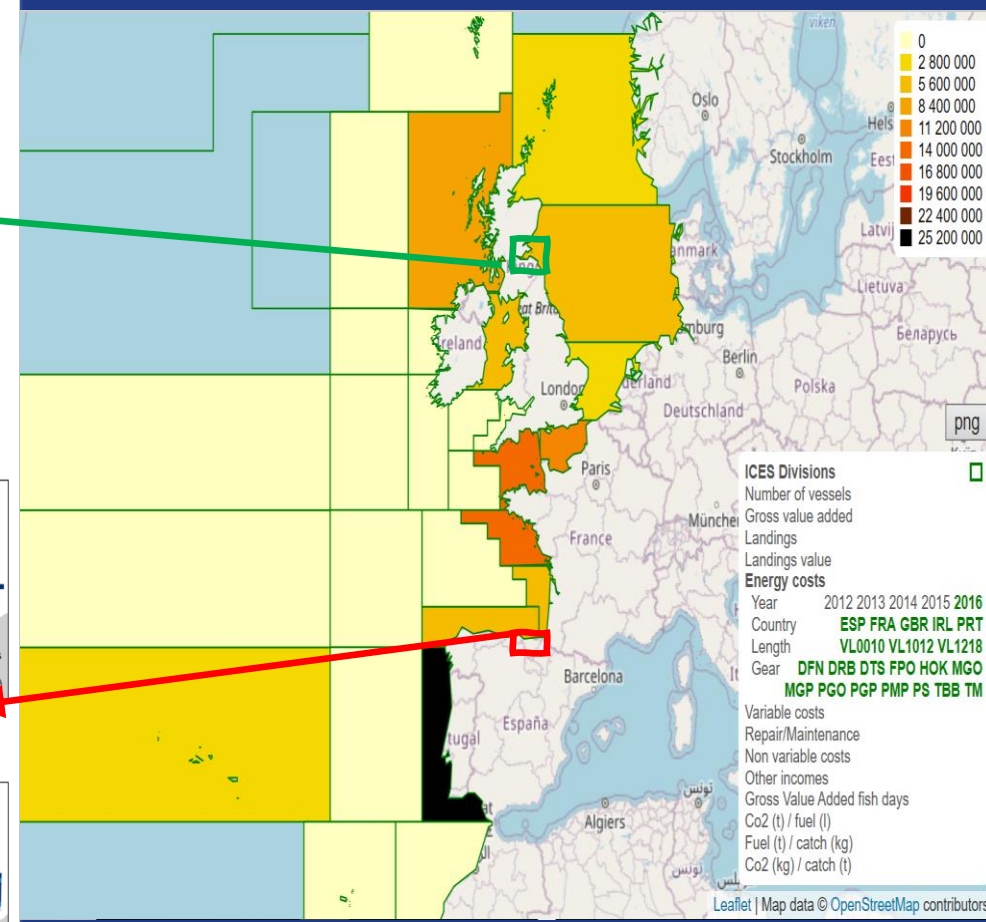
Setting up policy recommendations for the management of SSF in the whole EU AA.



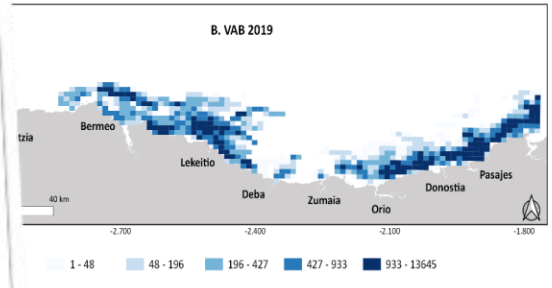
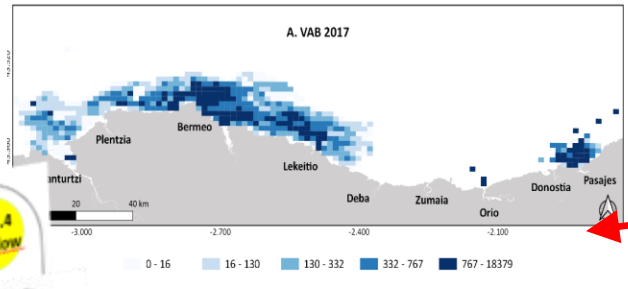
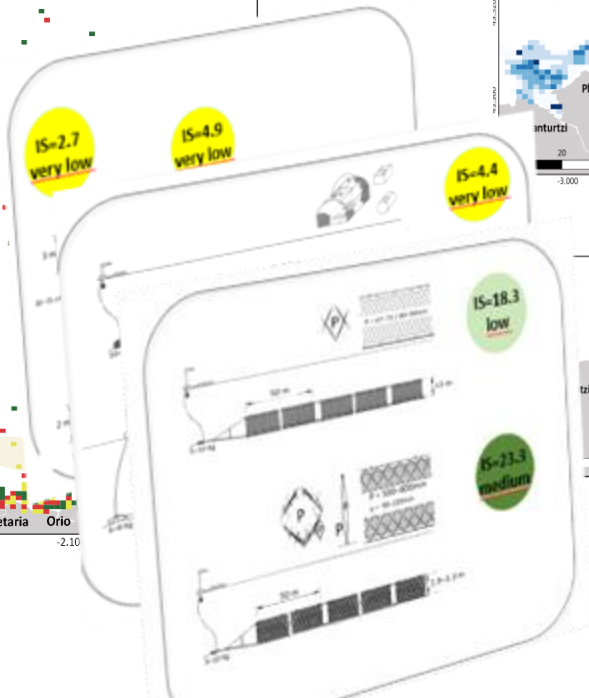
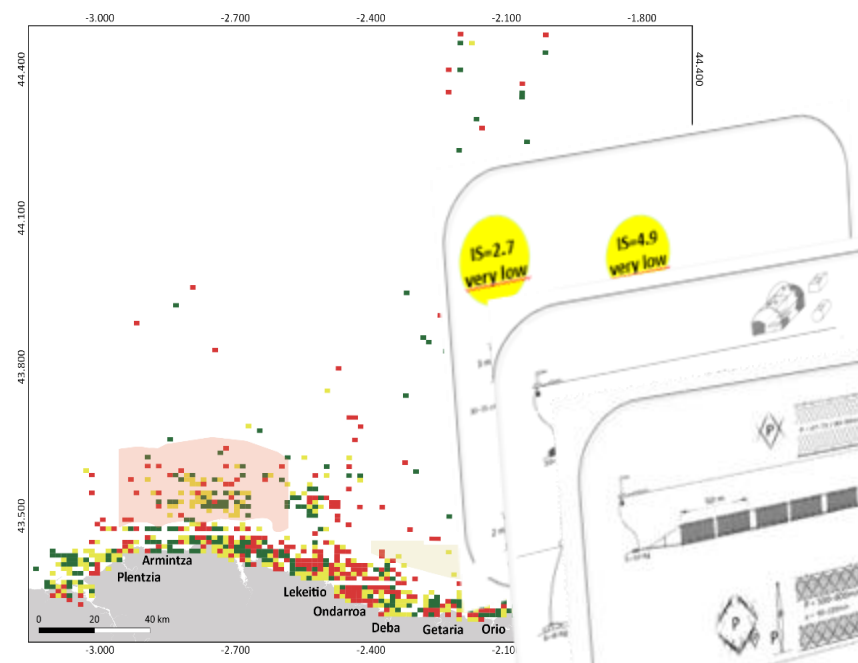
Number of vessels /grid cell



Example from CABFishMAN



| ICES Divisions | Number of vessels | Gross value added | Landings | Landings value | Energy costs | | | | | | | | |
|-----------------------------|-------------------|-------------------|----------|----------------|--------------|-----|-----|-----|-----|-----|----|-----|----|
| Year | 2012 | 2013 | 2014 | 2015 | 2016 | | | | | | | | |
| Country | ESP | FRA | GBR | IRL | PRT | | | | | | | | |
| Length | VL0010 | VL1012 | VL1218 | | | | | | | | | | |
| Gear | DFN | DRB | DTS | FPO | HOK | MGO | MGP | PGO | PGP | PMP | PS | TBB | TM |
| Variable costs | | | | | | | | | | | | | |
| Repair/Maintenance | | | | | | | | | | | | | |
| Non variable costs | | | | | | | | | | | | | |
| Other incomes | | | | | | | | | | | | | |
| Gross Value Added fish days | | | | | | | | | | | | | |
| Co2 (t) / fuel (l) | | | | | | | | | | | | | |
| Fuel (t) / catch (kg) | | | | | | | | | | | | | |
| Co2 (kg) / catch (t) | | | | | | | | | | | | | |



OUTPUTS BY USERS

SSF SECTOR

✓ **Viability**. Socio-economic growth and sustainability assessment

FLAGs

✓ Social importance for **coastal communities**

RESEARCHERS

✓ Social sustainability **pathways**

NGOs

✓ Social sustainability pathways – **balance** between environment, economic and social issues

ADVISORY
BODIES

✓ **Advice** from GeoTool

STUDENTS ...

✓ **Lessons learned**

POLICY
MAKERS

✓ **What happens if?**

<https://www.cabfishman.net/>

@Cabfishman

