



The Danish Fishermen's Occupational Health Services

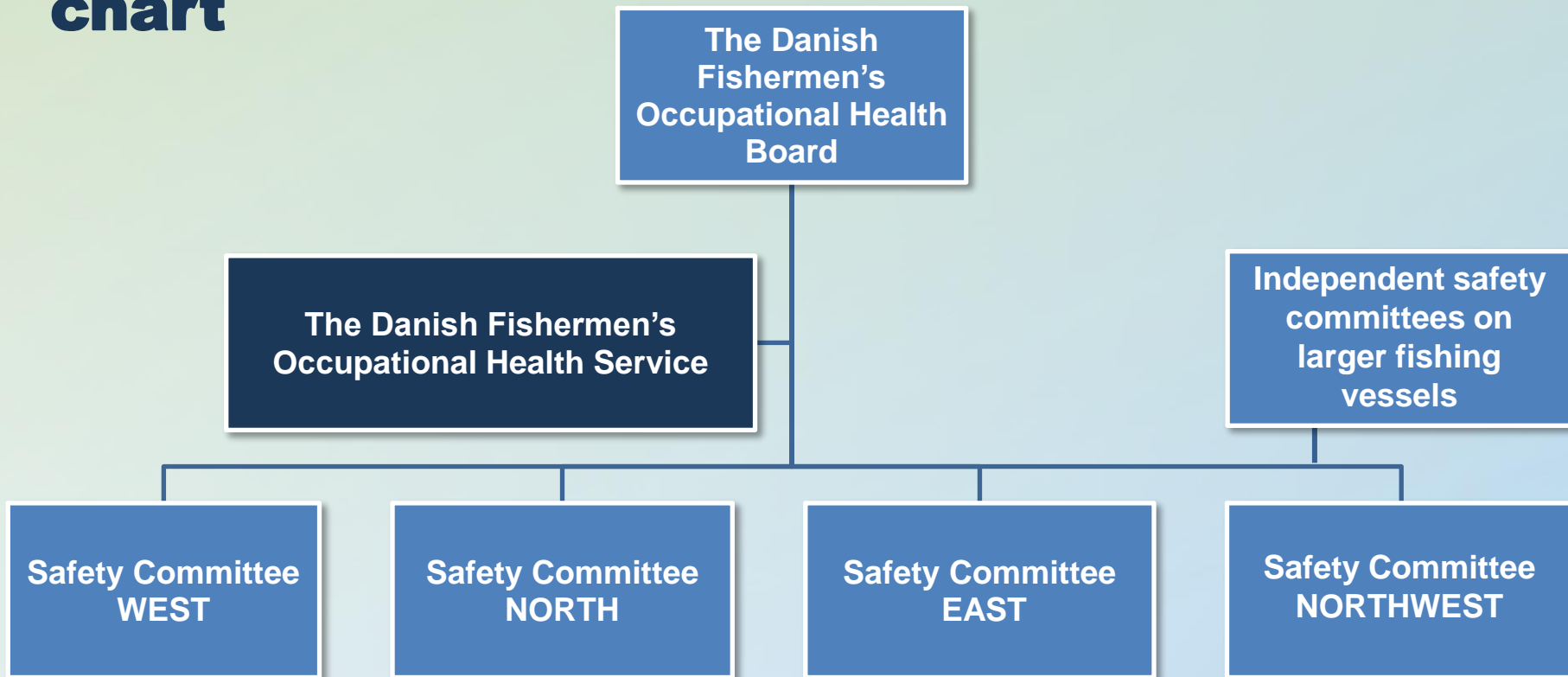


55°28'20 N
008°25'50 Ø





Organizational chart





The Danish Fishermen's Occupational Health Board

Purpose

- Promote the safety of fishermen and prevent injuries
- Maintain a healthy and safe working environment on Danish fishing vessels

Tasks

- Identify and assess health and safety problems
- Provide information, guidance and coordinate the work of the safety committees
- Make requests and suggestions about health and safety of and on fishing vessels
- Propose and comment on new rules and regulations





The Danish Fishermen's Occupational Health Service

Tasks

- To identify and evaluate occupational health problems on fishing vessels
- To act as a secretariat for all local safety committees
- To assist and advise ship owners, employees and the safety organisation of the fishing industry when solving occupational health issues.
- To advise ship owners, employees and the safety organisation of the fishing industry about the purchase, control as well as use of personal protective equipment.
- Educate the members of the Safety Committees





Safety Committees

How are they represented?

- Employees and ship owners are equally represented

What are their tasks?

- The safety committees plan, manage and coordinate health and safety work of the fishermen in their local area
- Make sure that the reasons for accidents, poisoning and work-related attrition are looked into and arrange for measures to be taken to prevent recurrence

Education

- Four weeks after a safety committee has been created or in connection with elections for the committee, members must attend an occupational health course approved by the Danish Maritime Authority.





Safety Committee areas





Typical tasks on board

- Advice / help with everything on board relating to health /safety / working environment
- Noise measurement and noise measurement reports
- Proposals to reduce noise problems
- Interpretation of new regulations / rules
- Help with preparation of workplace assessment
- Pre-inspection before the maritime Authority's ordinary surveys
- Suggestions / help with repairs in connection with surveys
- Advice when building new and conversion of vessels,
as well as flagging in fishing vessels
- Help / advice on work related injuries / attrition
- Crisis counselling
- Development of products / equipment to prevent accidents and attrition



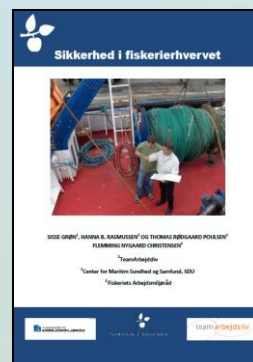
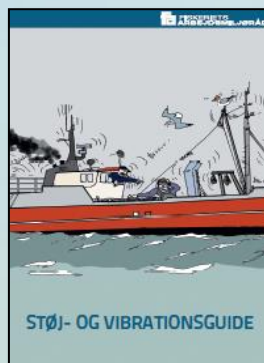
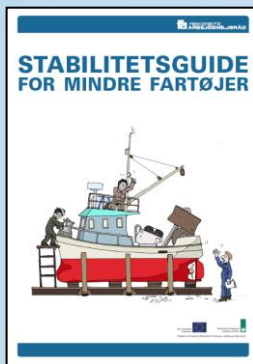


Who we help – big and small






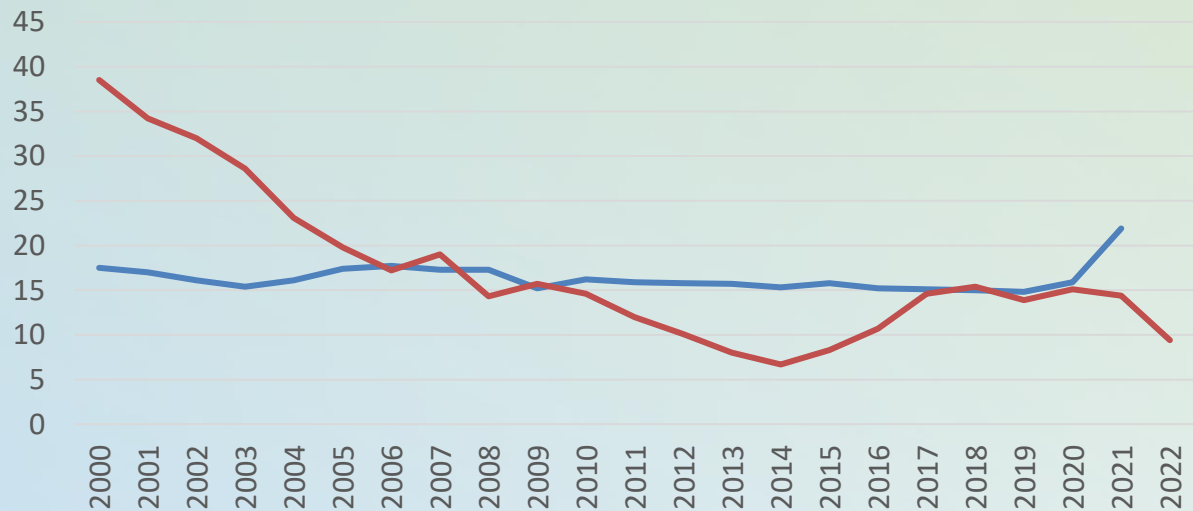
Publications





The number of reported accidents per 1.000 fishermen

All trades 
Fisheries 





Safety Management System

Web-based system for doing workplace assessment, maintenance and control of the medicine boxes, crew and their qualifications, equipment and survey, drills, safety meetings etc.

www.f-a.dk





Safety Management System

▼ Master data

Master data

Guide

▶ Workplace Assessment (WA)

▶ Workplace user instruction (WUI)

▶ Safety meetings

▶ Medicine box

▶ Crew list

▶ Equipment and survey

▶ Exercises

▶ Nearmiss

▶ Login / Log out: UVB

★ Add to Favorites

Main Solution

Information	Date	By
	10-01-2022	inc

Master data		Change master data	
Name of Ship:	JEANET	Call signal:	OQNN
Registration no:	E 751	Name:	Anders Andersen
MMSI-Number	219 000 000		

Workplace Assessment ●		Change WA status	
WA has been made d.	15-05-2020	WA reviewed by d.	15-05-2023

Pharmacy agreement		Change Pharmacy agreement	
Pharmacy - agreement:	Skanderborg apotek	Medicine box type:	A

Picture		Change/insert picture	





Thank You

