



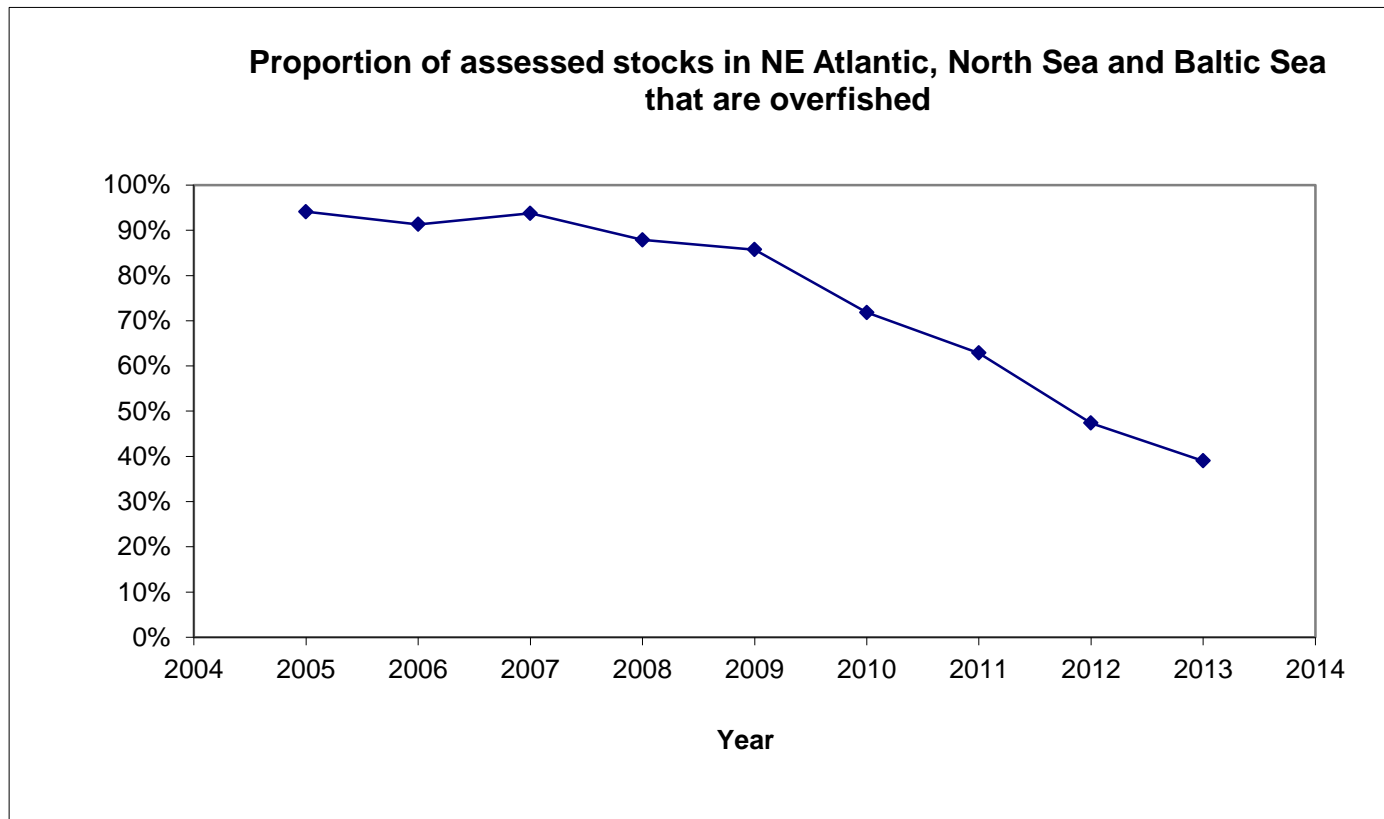
Consultation on Fishing Opportunities for 2014

**Directorate-General for Maritime Affairs and Fisheries
European Commission**

1. State of Stocks
2. Trends in effort
3. Economic Analysis
4. Data-poor Stocks
5. Preparing for the discard ban
6. Long-term plans and TAC proposals
7. Timing and Planning

1. State of Stocks

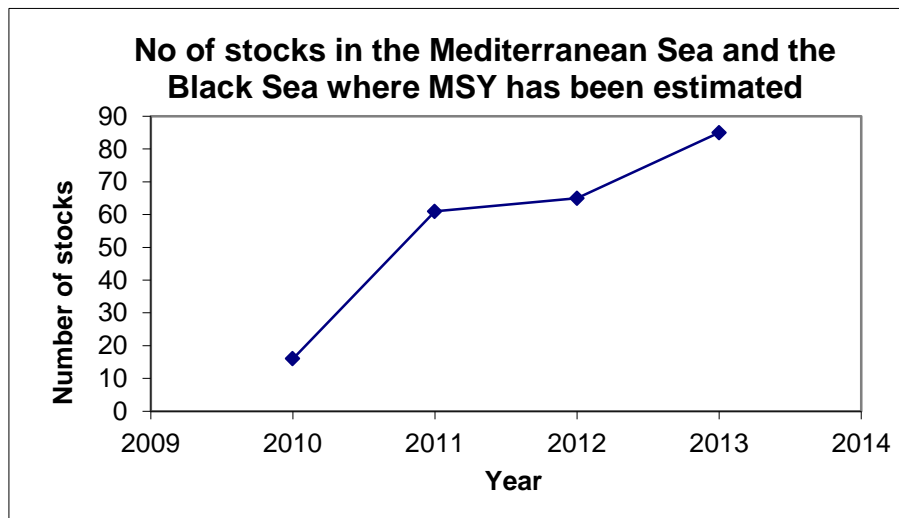
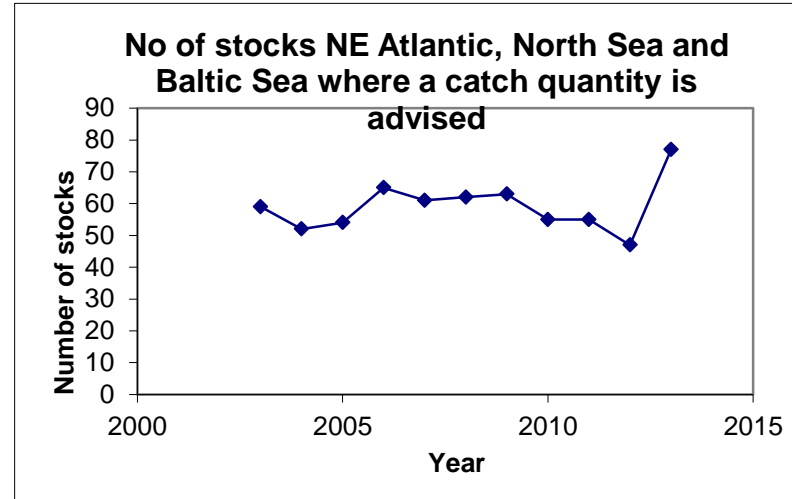
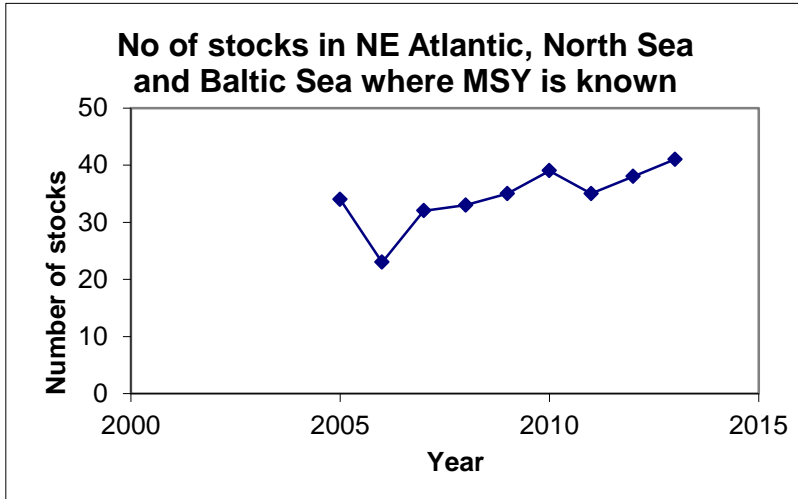
Overfishing is reducing





European
Commission

... and knowledge is improving



Northeast Atlantic Pelagics

- Herring in most areas now fished within MSY rates; also Baltic Sprat.
- TACs corresponding to F_{MSY} catches have been set for most stocks
- Some increases in F above F_{msy} for western horse mackerel, herring in NW Ireland, Gulf of Riga and Baltic main basin.
- Total mackerel out-take is again 36% above advice, not counting Russian catches.

North Sea, Skagerrak and Kattegat

- Saithe, plaice, haddock, herring, Nephrops in Fladen ground and in Skagerrak are fished at MSY levels.
- All other stocks are overfished or in unknown state.
- Cod is still at half Bpa and close to Blim. Discard rates have declined but are still around 25% of landings. More needs to be done for the stock to recover, especially in the Kattegat.
- Plaice and whiting discards are still high, but more selective gear was introduced in the Skagerrak.

Baltic Sea

- Sprat, eastern cod, western herring and Bothnian Sea herring are now fished at F_{MSY} .
- TACs were "pre-decided" at national fisheries directorates level ("BALTFISH") in line with advice – a good example of regionalised implementation.
- Discard ban implementation is in place in some Member States (not EU level) and new cod selectivity measures are in place.

Celtic Seas

- 10 out of 18 assessed stocks were fished at F_{msy} levels.
- Cod, haddock and whiting in west of Scotland and the Irish Sea are in very bad shape.
- There are high discards of whitefish, notably in the Celtic Sea.
- Member States committed to reviewing gear selectivity measures.
- The closed season for Nephrops on the Porcupine Bank was shortened.
- NWWRAC working on correcting data deficiencies.

Bay of Biscay and Iberian-Atlantic area

- Good recruitment of southern hake, but the stock is still overfished. Discards are around 6%.
- Nephrops are still under a zero-catch advice.
- Improvements to catch and effort recording are being put in place.

Mediterranean Sea

- The number of assessment is building up strongly, but it is not possible to assess each stock every year.
- 10 stocks out of 85 are assessed as fished within Fmsy.
- 7 of these ten were small pelagic species.

Black Sea

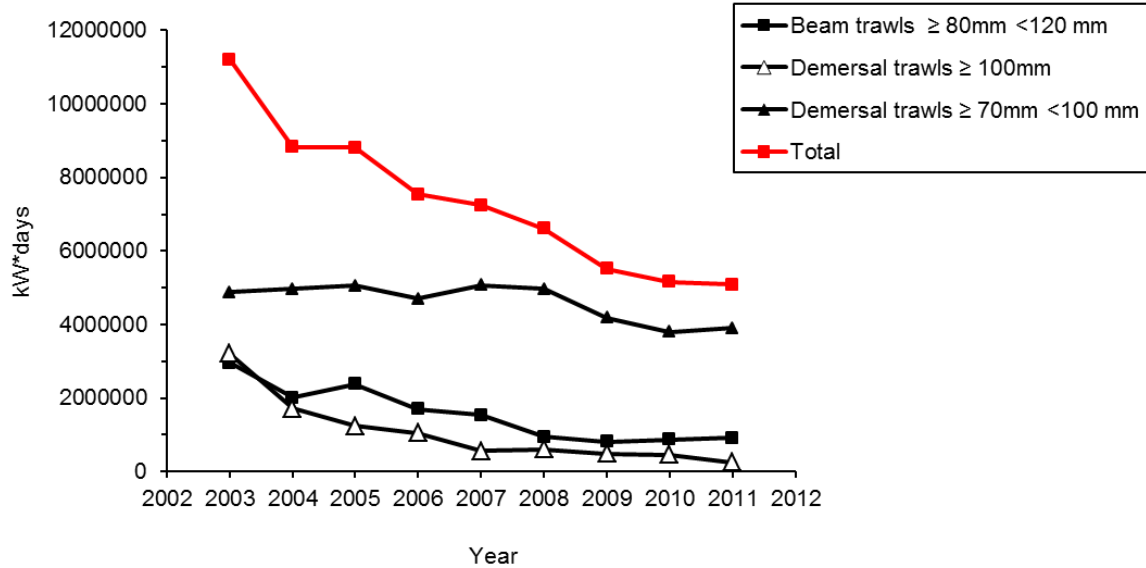
- The situation has worsened.
- Sprat is now overfished and turbot mortality at the highest recorded level.
- Joint international management of the area is needed.

2. Fishing Effort

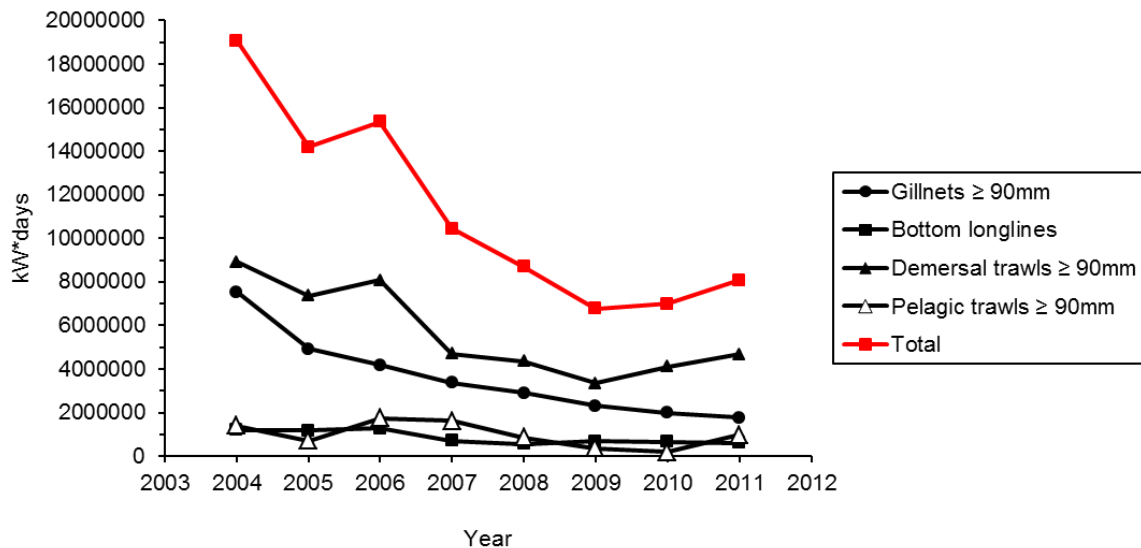
Fishing effort

- Gradual decline in kw-days since 2003 in many areas
- No decline in Iberian-Atlantic area (and missing data from Spain since 2009).
- Some examples concerning effort regulated under long-term plans

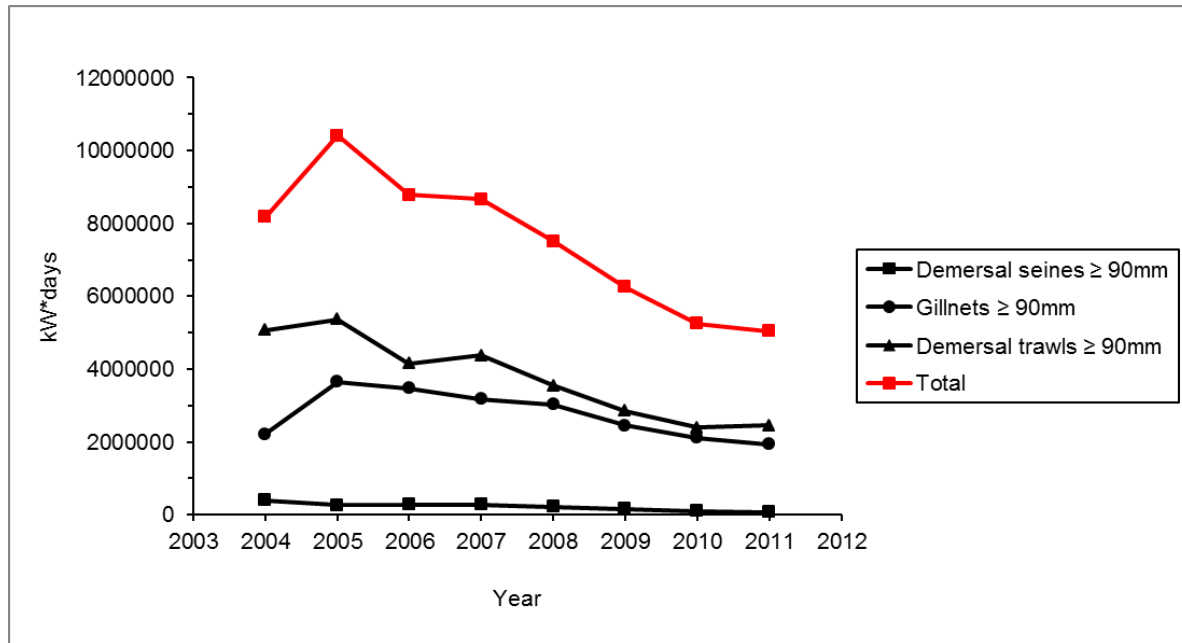
Irish Sea



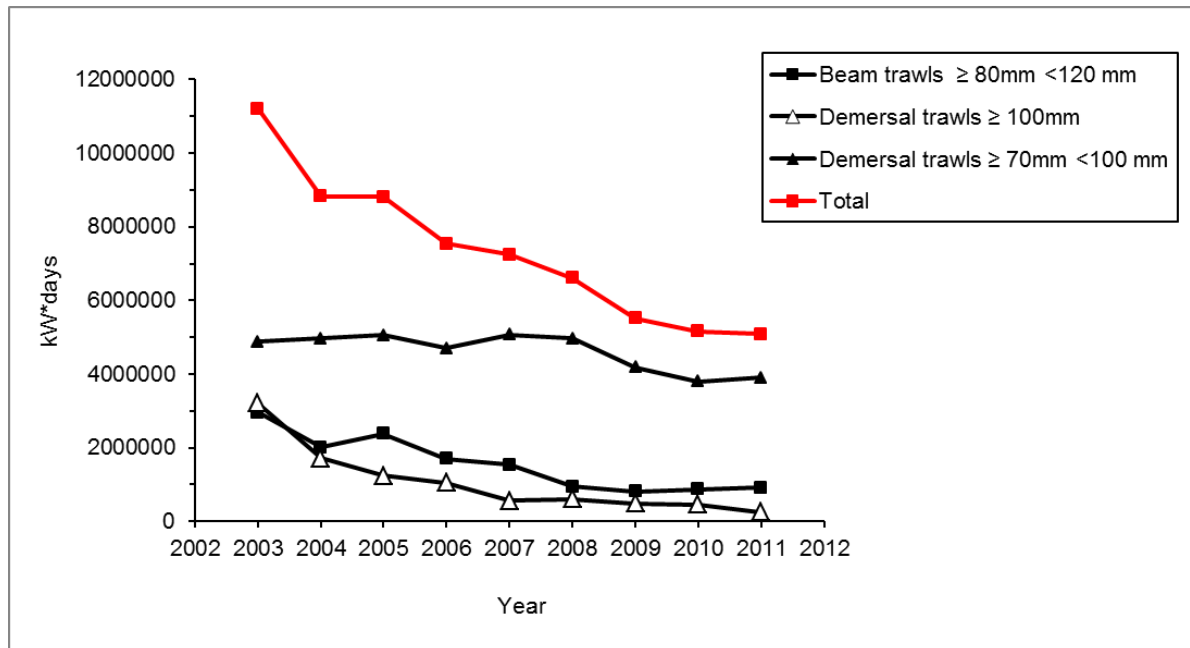
Central Baltic



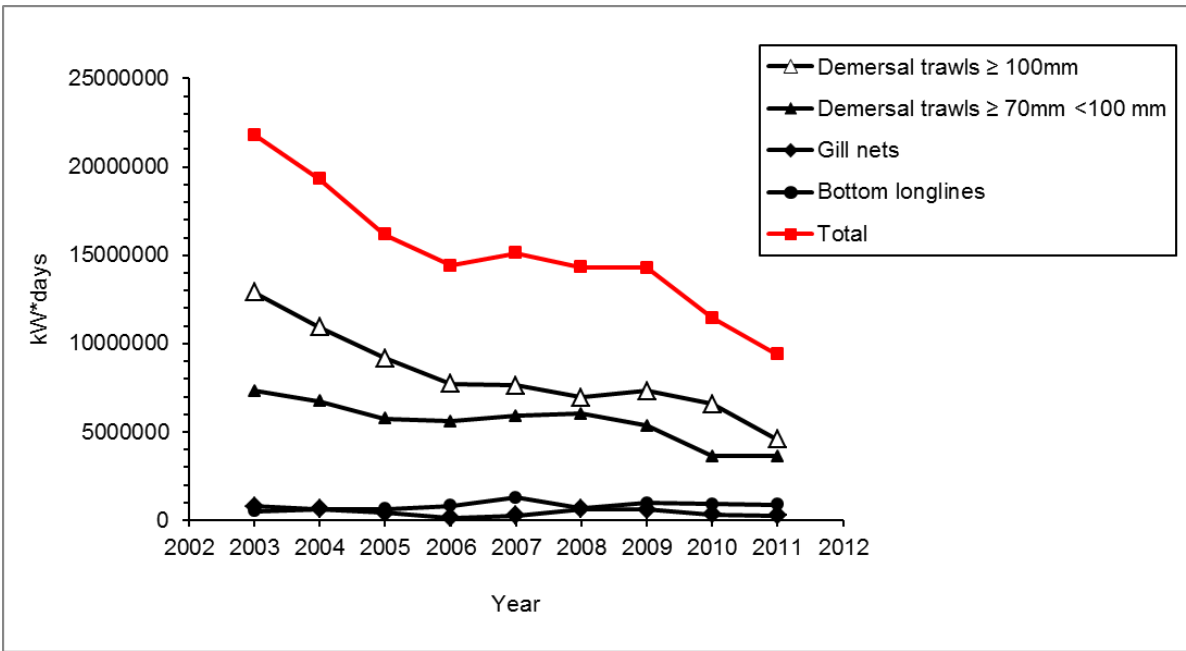
Western Baltic



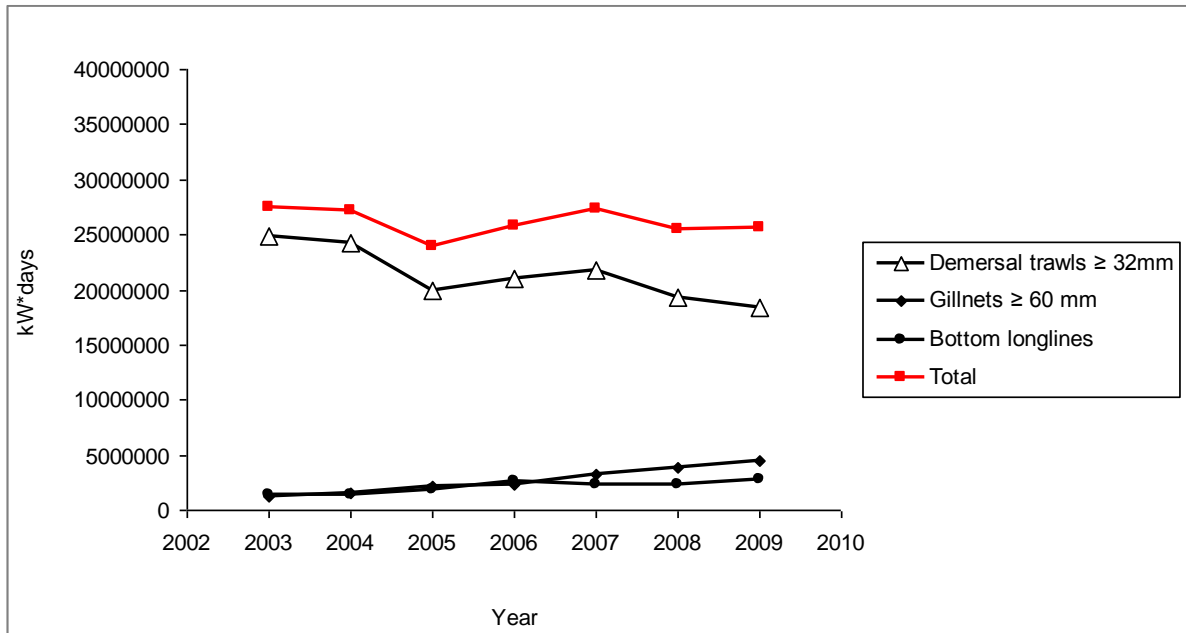
North Sea



West of Scotland



Iberian-Atlantic waters



3. Economic analysis

Assessment to 2011...

- Overall fleet net profits improved by ~40% since 2010.
 - **Prices increased**
 - **Volumes fell**
 - **Fuel costs increased ~21%**
- Employment decreased around 5% since 2010.
- Income increased from ~€6.5bn to ~€7.1bn
- Net profit increased from €324m to €457m.
- The gap between profitable and non-profitable fleets widened in 2011.

3. Data-limited stocks

Data-limited stocks

- New method for evaluation and advice introduced by ICES in 2012.
- This brought an extra 30 stocks in the NE Atlantic area under scientific advice.
- Based on this advice, Commission and Council agreed to keep the TACs of 21 of these stocks unchanged at the 2013 unless different advice warrants a change.

4. Preparing for the Discard Ban

Obligation to land all catches

- Expected to come into force in 2015 for all catches taken in fisheries for:
 - **all fisheries under quota in the Baltic Sea;**
 - **small pelagic fish (mackerel, herring, horse mackerel, blue whiting, boarfish, anchovy, argentine, sardine, sprat);**
 - **large pelagic fish (bluefin tuna, swordfish, albacore tuna, bigeye tuna, blue and white marlin);**
 - **industrial purposes, *i.a.* fisheries for capelin, sandeel and Norway pout;**

Adjustments to fishing opportunities?

- Commission is asking ICES and STECF to look at possible adjustments to TACs:
 - **depending on the extent of previous discarding**
 - **depending on to reaching F_{msy} by 2015**
- Member States and RACs are asked to provide corresponding data.

5. Long-term plans and TAC proposals

Long-term plans and TAC proposals...

- Where still in force, they have to be implemented; including plans agreed bilaterally or in RFMOs
- Commission will base proposals on any long-term plans that have the support of both RACs and ICES/STEFCF as conforming to MSY.
- Where plans have expired, Commission to make proposals to reach MSY by 2015.
- ICES "MSY Framework" to be followed.
- Data-limited advice to be used as a basis for TAC decisions.

Long-term plans and TAC proposals...

- Work continues on:
 - **multispecies plan for the Baltic Sea**
 - **mixed fishery plan for the North Sea**
 - **study for Celtic Sea**
- These plans are still in discussion between EP and Council:
 - **Anchovy in Bay of Biscay**
 - **Baltic Salmon**
 - **western horse mackerel (since 2009!)**

Long-term plans and TAC proposals...

- And in the Mediterranean:
 - **MS are required to develop regional multiannual plans**
 - **Progress is slow ...**
 - **... and Commission has started precontentious measures against MS, with possible infringement proceedings in 2013**
 - **International management plan for small pelagics to be tabled at 37th session of GFCM.**
 - **Attempts to set up international management of Black Sea turbot is also underway.**

Timing and planning

Fishing Opportunities Regulation	Advice Available	Commission Proposal	Possible adoption by Council
Stocks in Atlantic, North Sea, Antarctic and other areas	July to December	October	December
Baltic Sea	Early June	Mid September	October
Black Sea	Late October	November	December