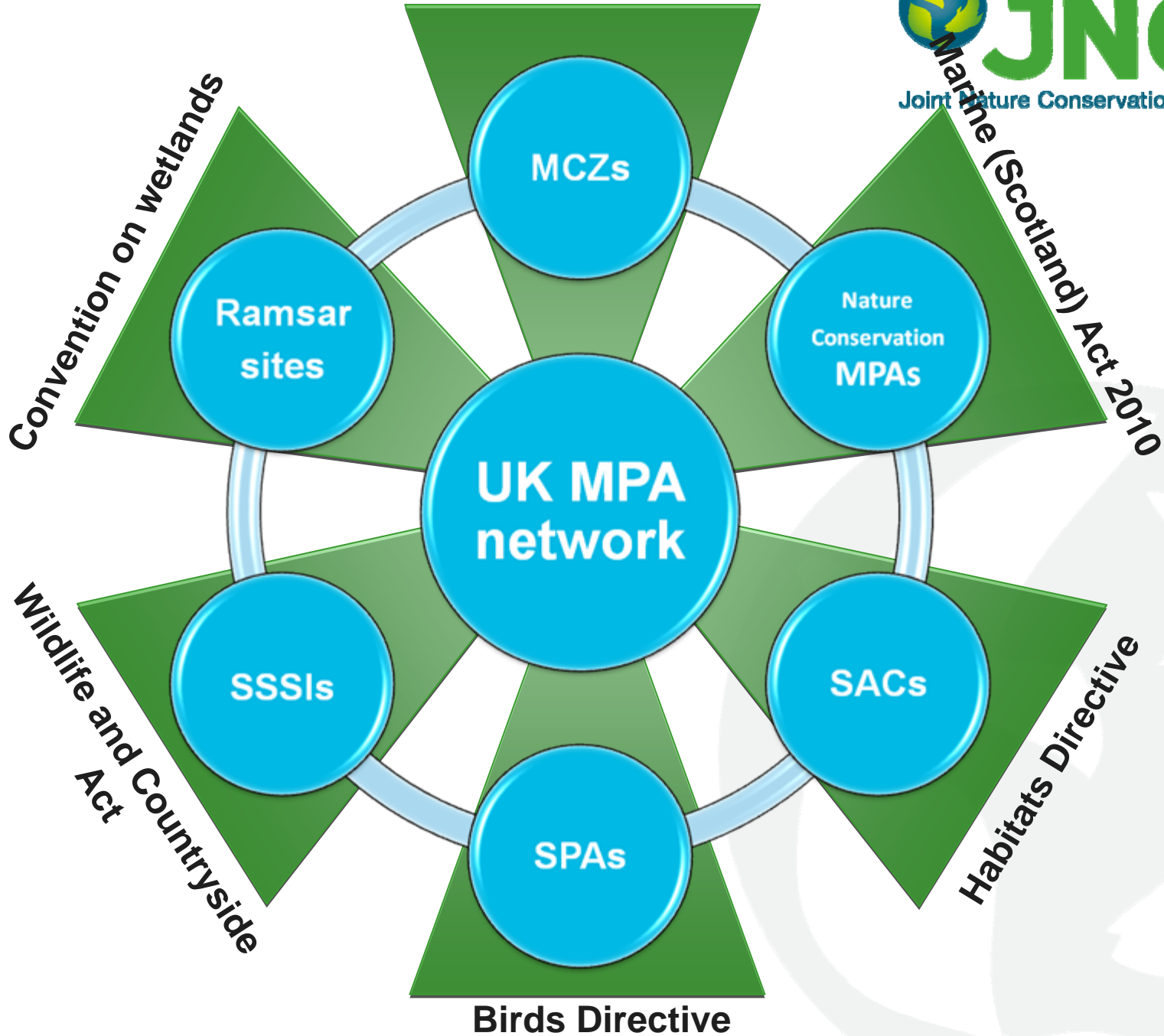


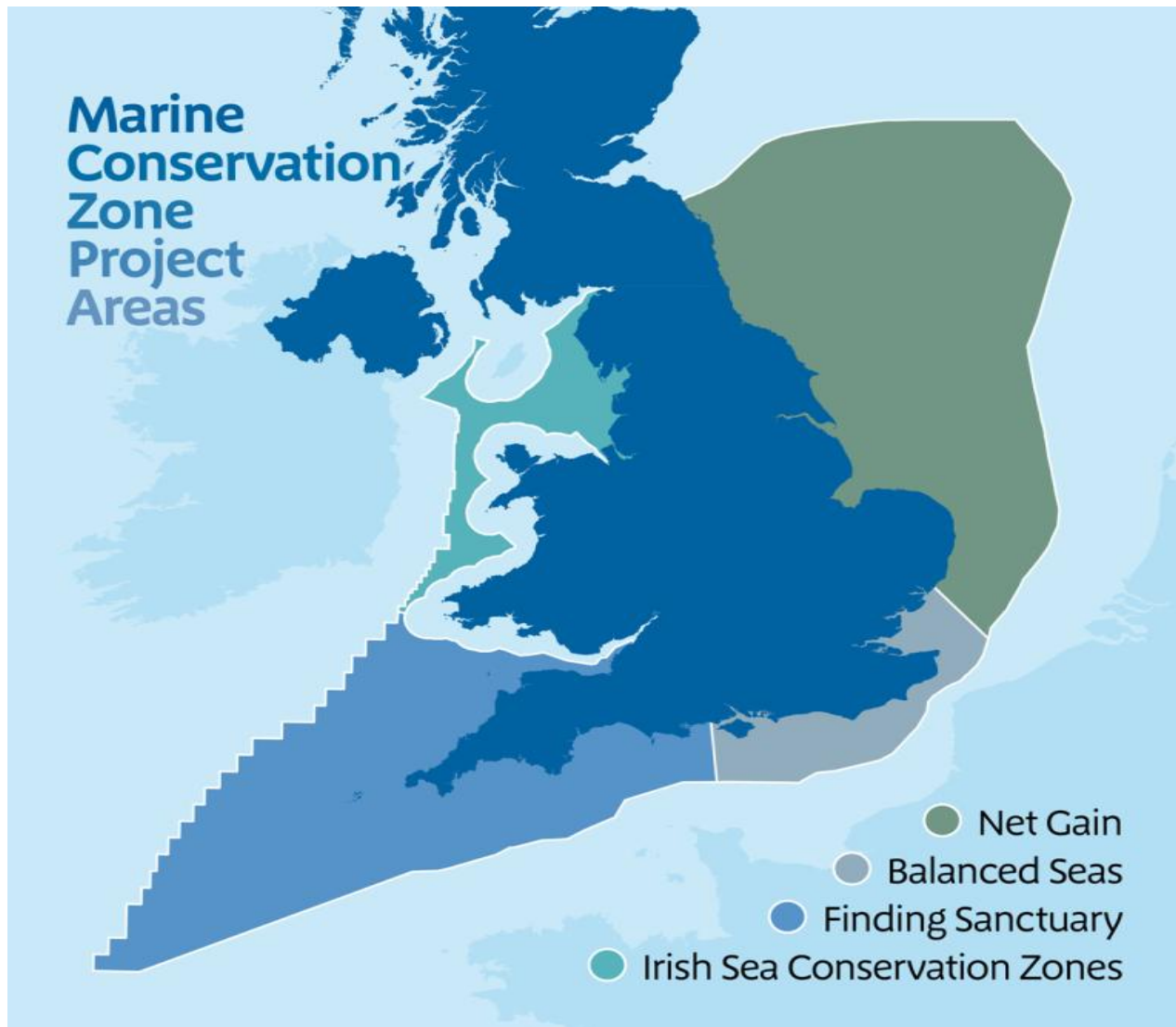
# UK MPAs Update

**Johnny Murt**  
**Amy Ridgeway**

Joint Nature Conservation Committee

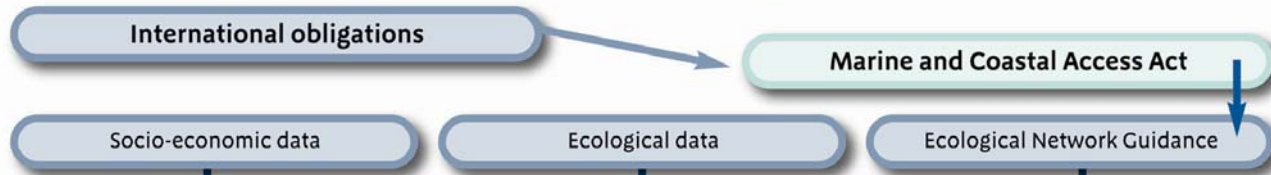


# The Marine Conservation Zone Project



## Marine Conservation Zone Designation Process

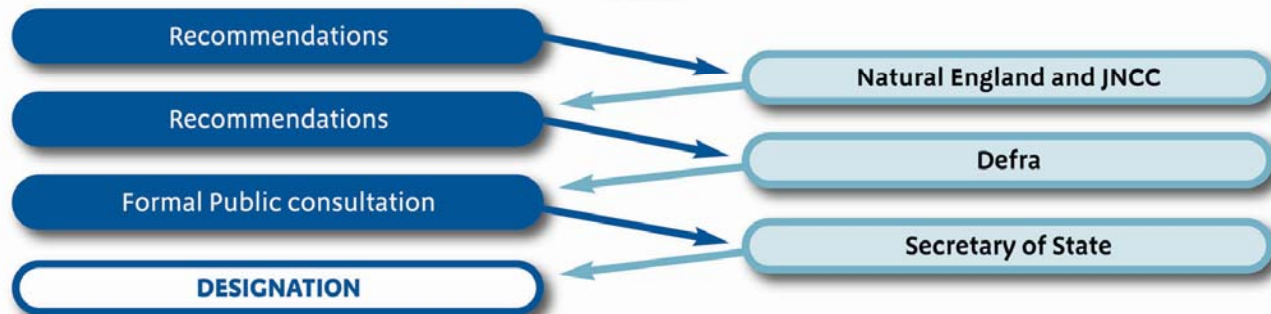
2008



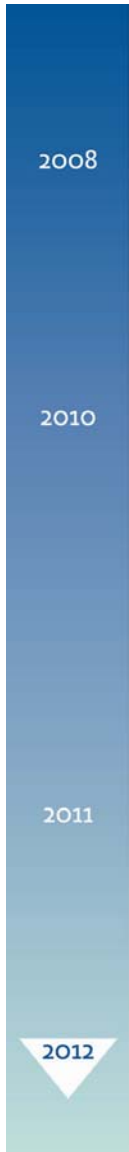
2010



2011



2012

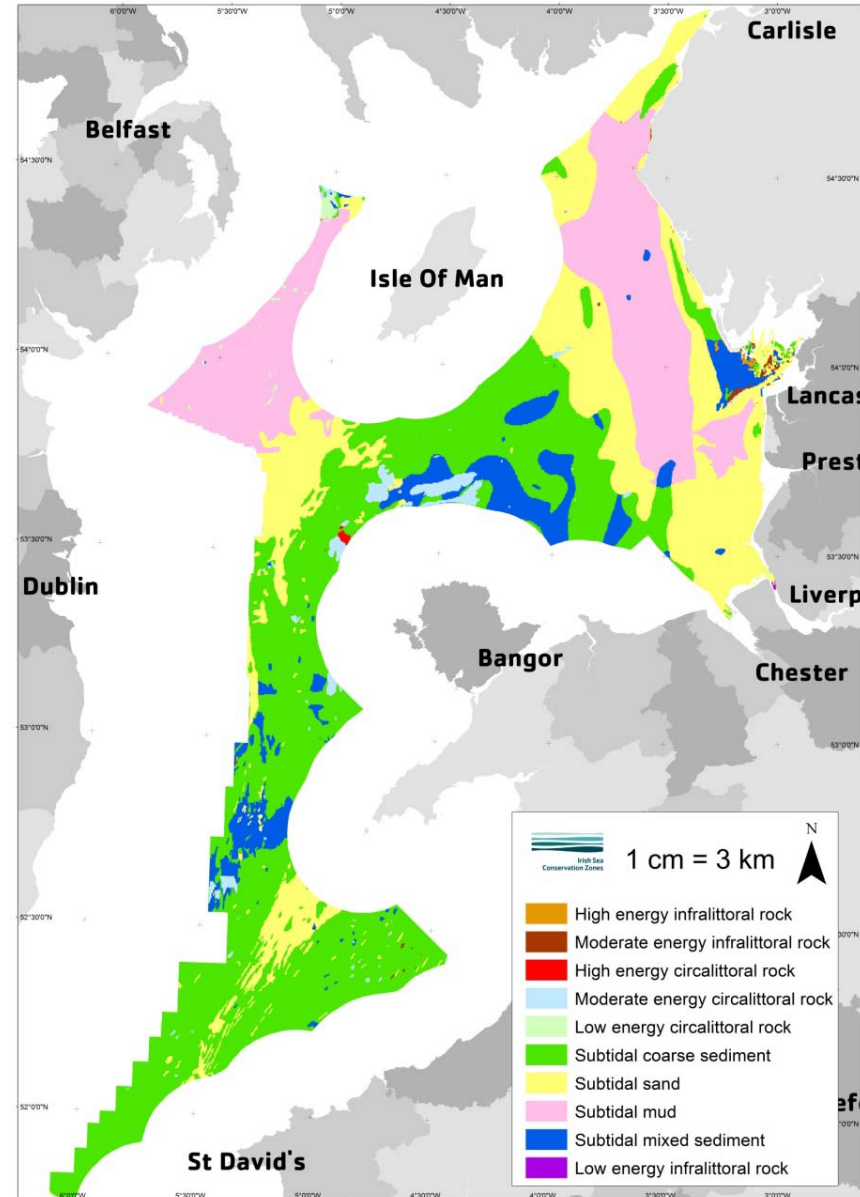


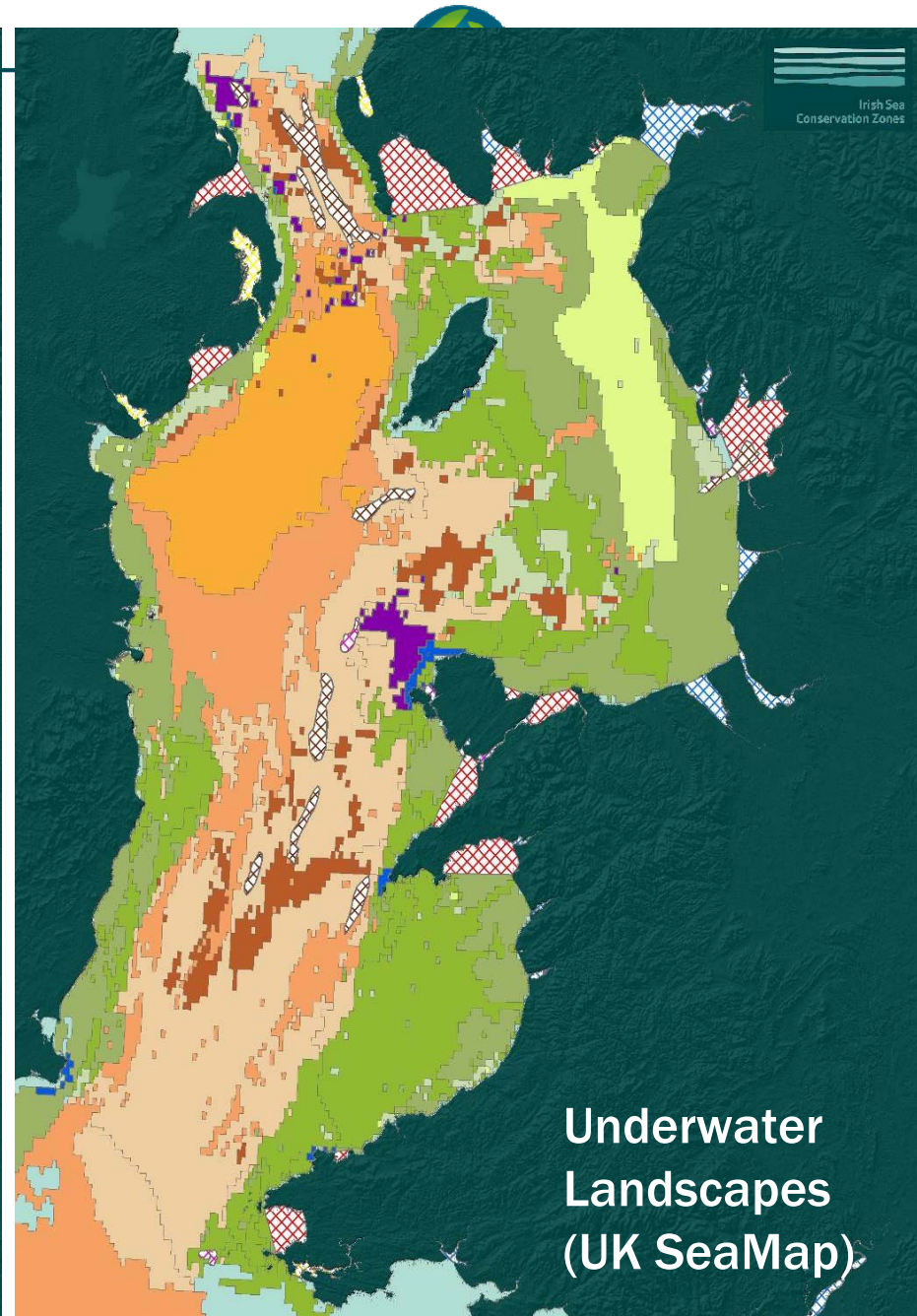
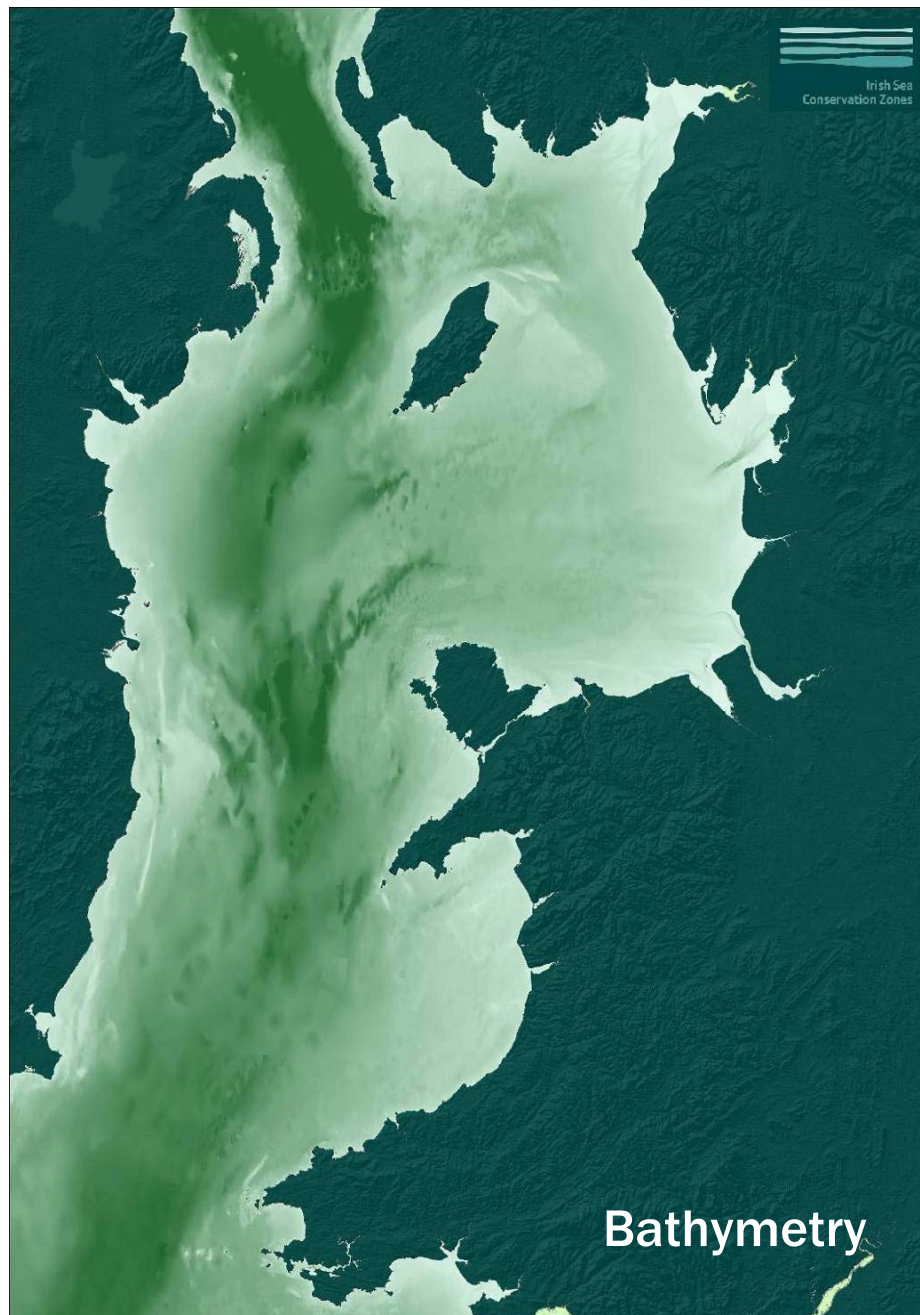
# MCZ process timetable:

Activity	Timeframe
Regional Stakeholder Groups established	<b>Jan-April 2010</b>
Explore site options using available information and guidance documents <i>First iteration</i> <i>Second iteration</i>	<b>April 2010 – March 2011</b>  <i>June 2010</i> <i>Oct 2010</i>
<b><i>Third iteration</i></b>	<b><i>Feb 2011</i></b>
Recommendations passed to JNCC and NE Impact assessments	<b>End of August 2011</b>  <b>End of September 2011</b>
JNCC and NE collate recommendations and Impact Assessments and provide advice to Ministers on whether the <u>Ecological Network Guidance</u> is satisfied	<b>November 2011</b>
Public consultation	<b>2012</b>
Designation	<b>December 2012</b>



- Diverse habitats in small area
- 39 members on stakeholder group
- Fishing grounds
- Round 3 wind farms
- Oil and Gas





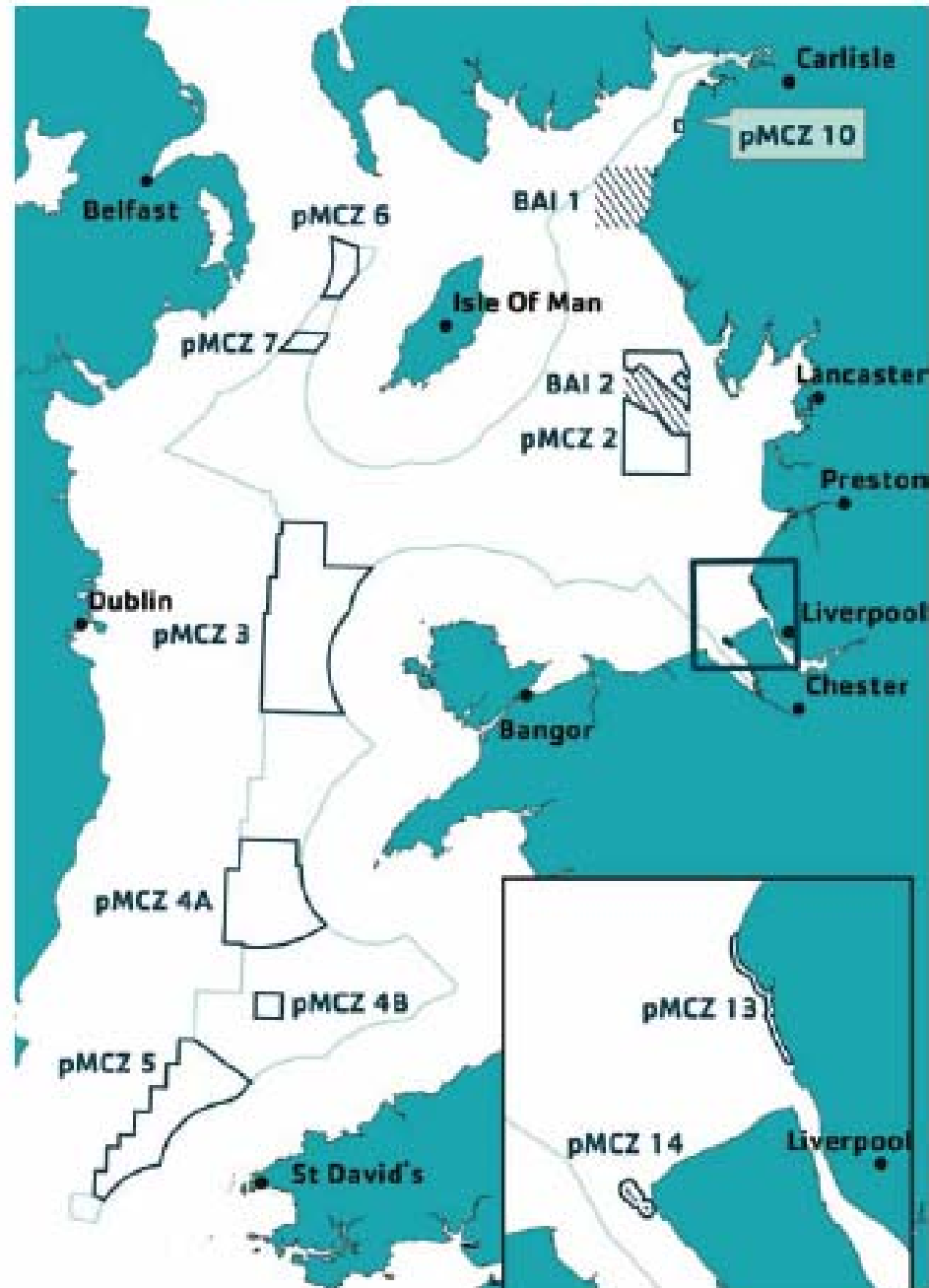






# ISCZ 3<sup>rd</sup> Iteration

- Activity data
- Habitat data
- Stakeholder group has identified these draft MCZs



## ISCZ – Upcoming Meetings

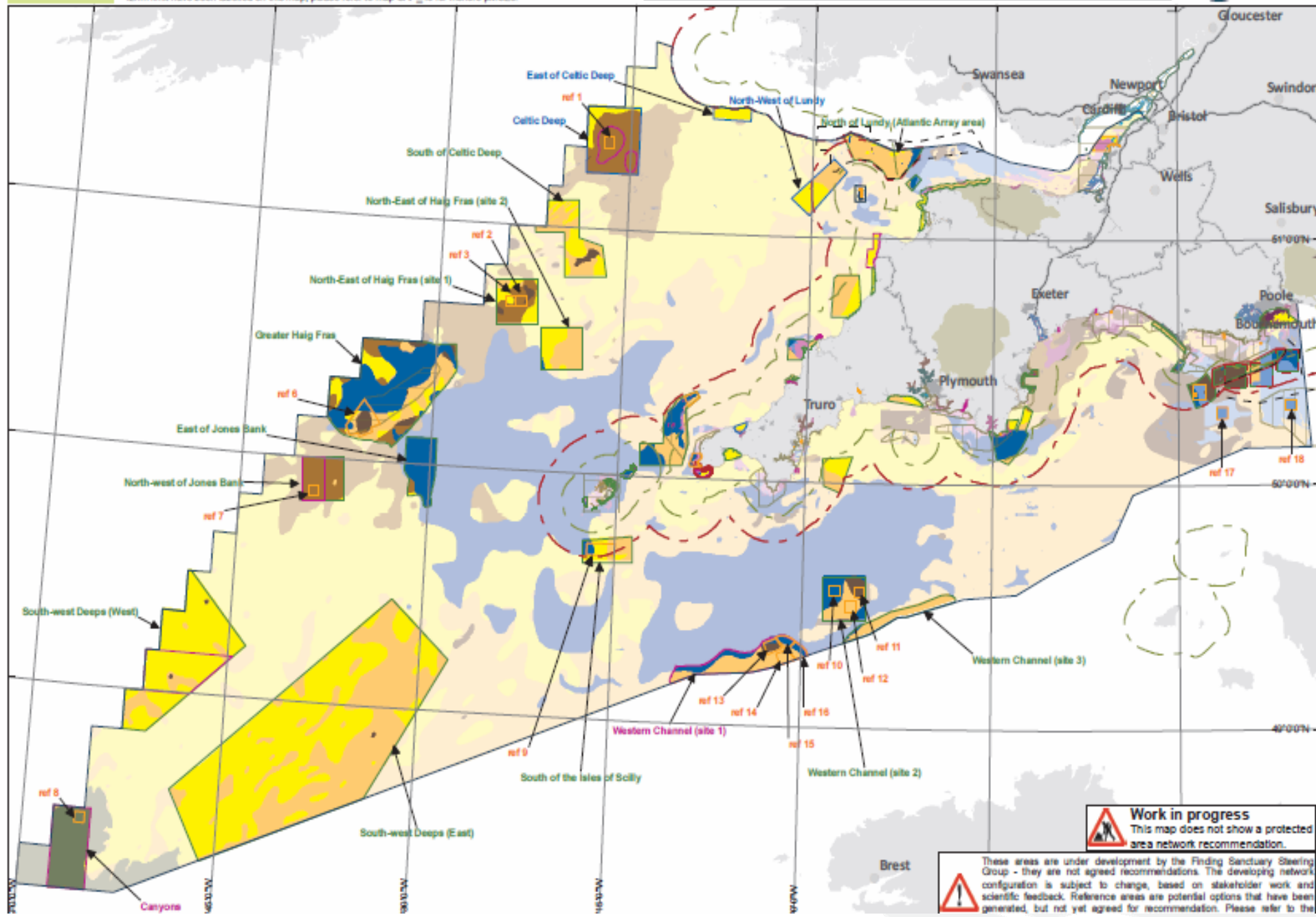
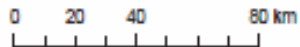
- May 9<sup>th</sup> – 10<sup>th</sup> 2011 – 6<sup>th</sup> Regional Stakeholder Group meeting
- July 2011 (TBC) – Final Regional Stakeholder Group meeting



### Developing Network Configuration and Reference Area Options (offshore map)

pMCZs in the south-west including alternatives depending on whether co-location of renewable energy devices and MCZs is assumed possible. Some reference area options have also been drawn. Only pMCZs outside or across the 12nm limit have been labelled on this map; please refer to map SAP\_45 for inshore pMCZs.

Maritime basemap © British Crown and SeaZone Solutions Limited, 2010. All Rights Reserved. OGB Licence No. 082008.004. Land basemap part © OpenStreetMap & contributors, CC-BY-SA. Not to be used for navigation.



**Work in progress**  
This map does not show a protected area network recommendation.

These areas are under development by the Finding Sanctuary Steering Group - they are not agreed recommendations. The developing network configuration is subject to change, based on stakeholder work and scientific feedback. Reference areas are potential options that have been generated, but not yet agreed for recommendation. Please refer to the



## Finding Sanctuary – Upcoming meetings

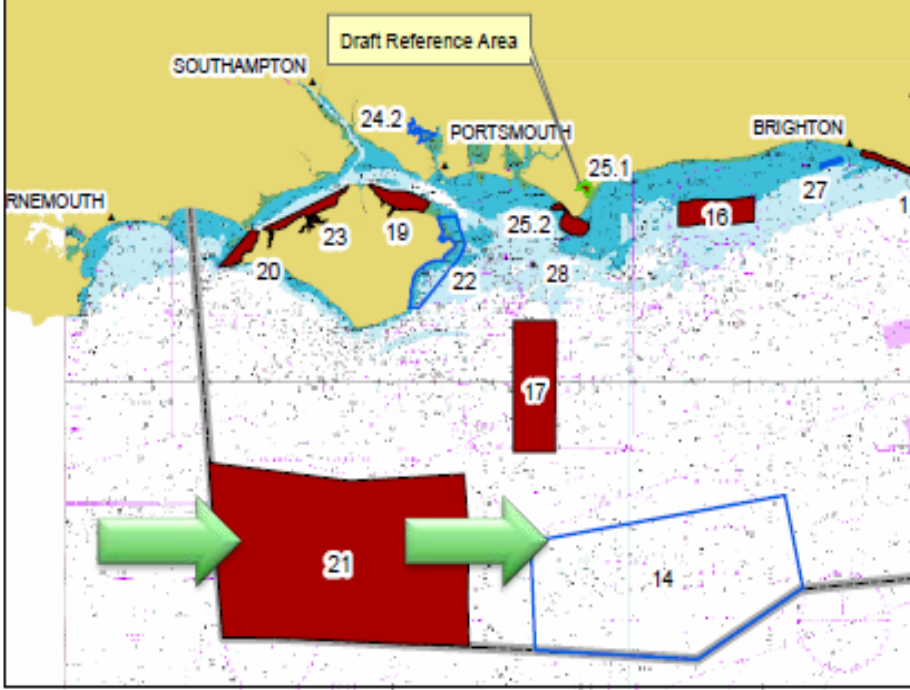
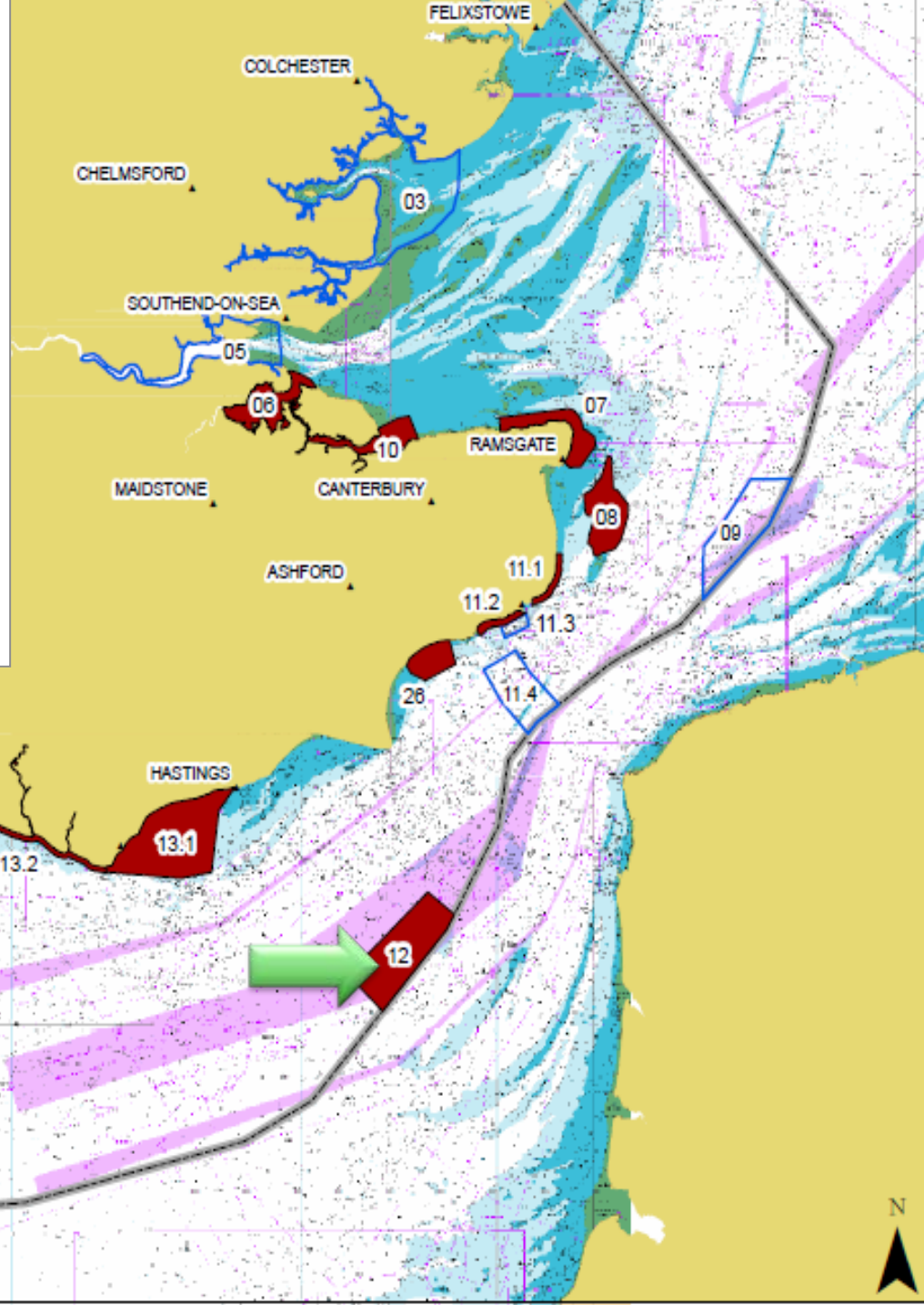
- April 11<sup>th</sup> – 13<sup>th</sup> – Develop offshore conservation objectives using vulnerability scores
- May 5<sup>th</sup> – Steering Group Meeting



# Third Progress Report

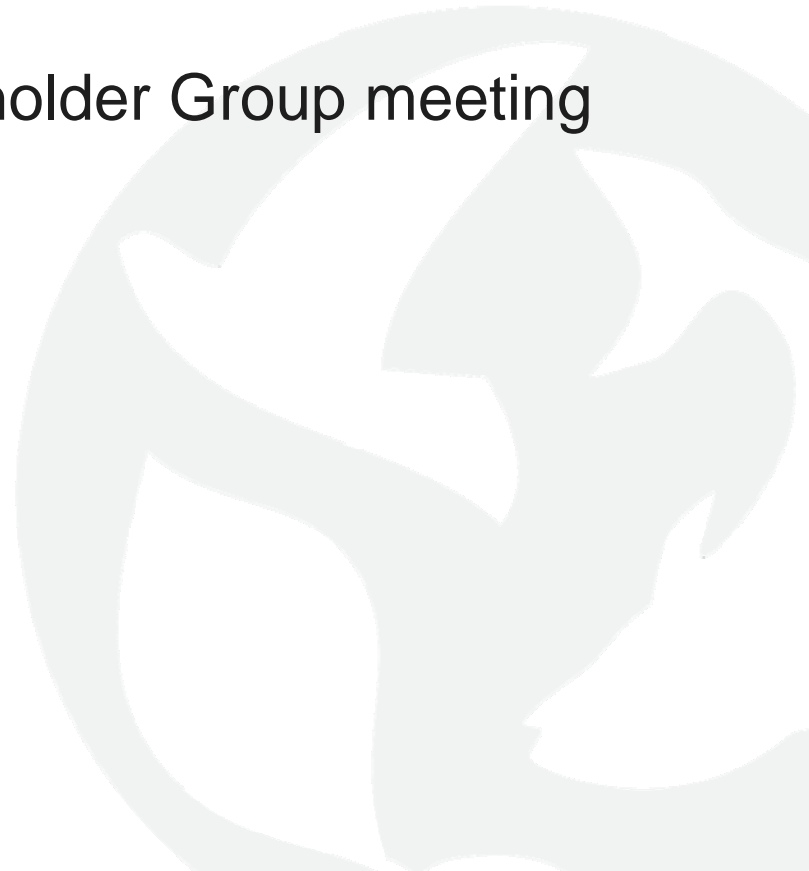
Sites considered Draft MCZs if they have:

- a comprehensive **list of features** (conservation objectives)
- an **agreed boundary** around those features (may be subject to small changes)
- a **willingness to negotiate** protection measures



## Balanced Seas – Upcoming meetings

- April 19<sup>th</sup> – 20<sup>th</sup> – Regional Stakeholder Group meeting
- May 16<sup>th</sup> – 17<sup>th</sup> – Regional Stakeholder Group meeting





# Impact Assessment

- Impact assessment will identify the costs and benefits of each individual MCZ if designated
- Features protected by the MCZ
- Activities within or in the vicinity of the MCZ
- Cost of measures for managing
- Cost/Benefits of impacts of MCZs on human activities
- Cost/Benefits arising from impact of MCZ on other ecosystem services

## Management Options

Within 6nm limit – Only applies to UK Vessels

Preferably be introduced by relevant IFCA

Other regulatory options include byelaws or fishing license conditions (MMO).

Voluntary restrictions will be explored before regulatory measures are introduced

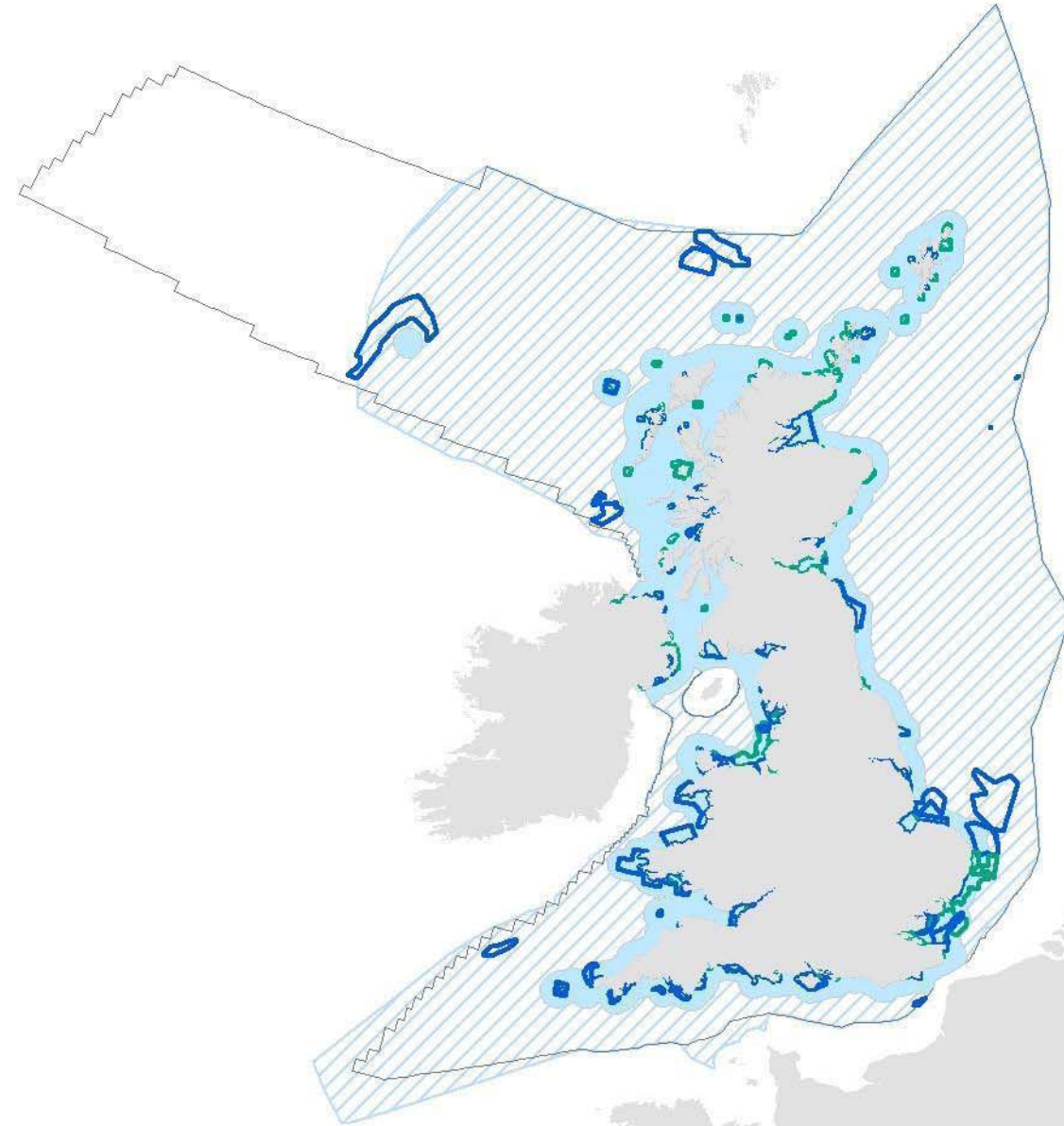
Beyond 6nm limit – All EU Vessels (with historic fishing rights)

Fishing Regulation under the CFP

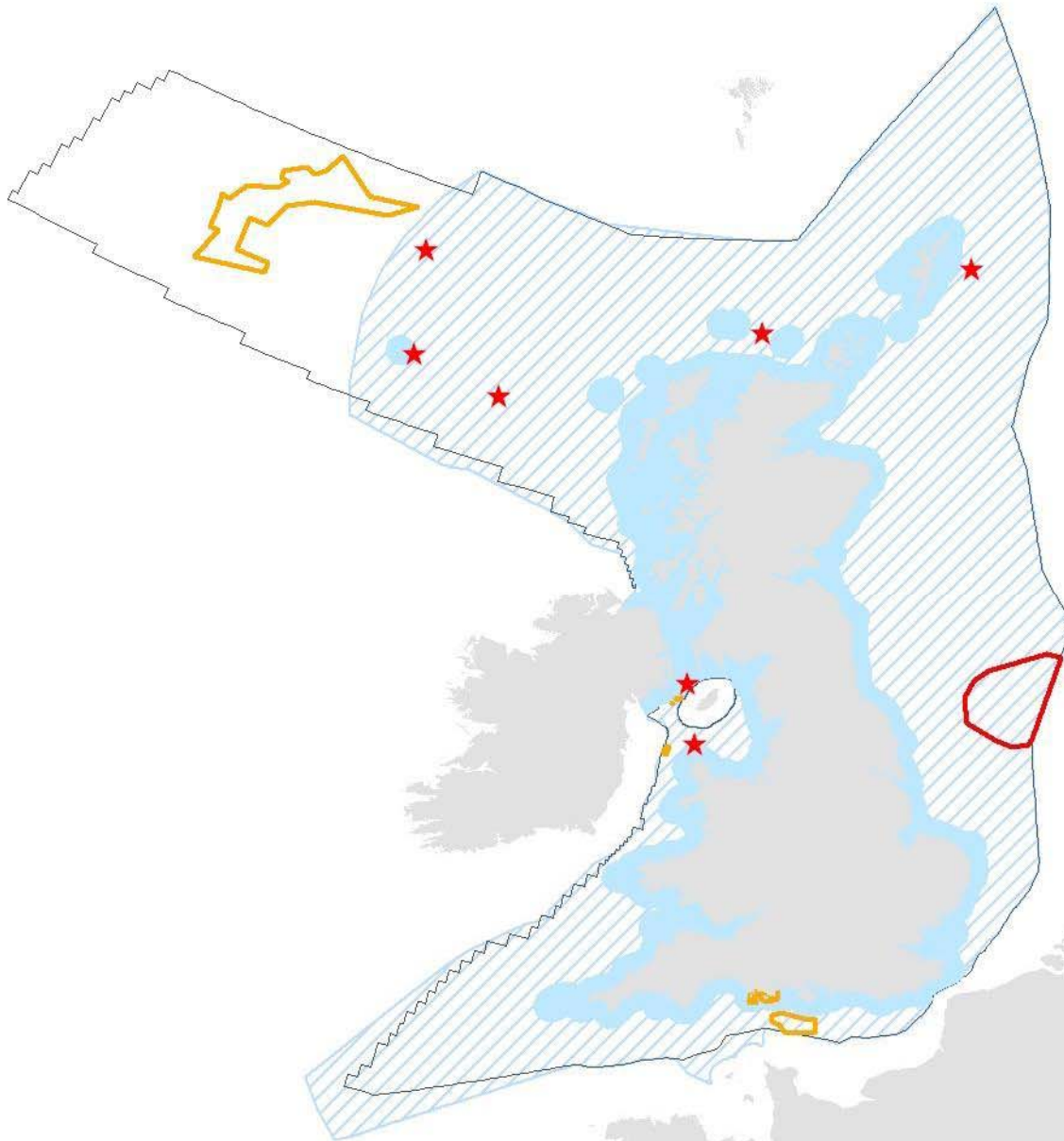
Regulation will apply to all EU vessels at the same time

## Natura 2000 sites

- 94 'marine' SACs
- 107 'marine' SPAs





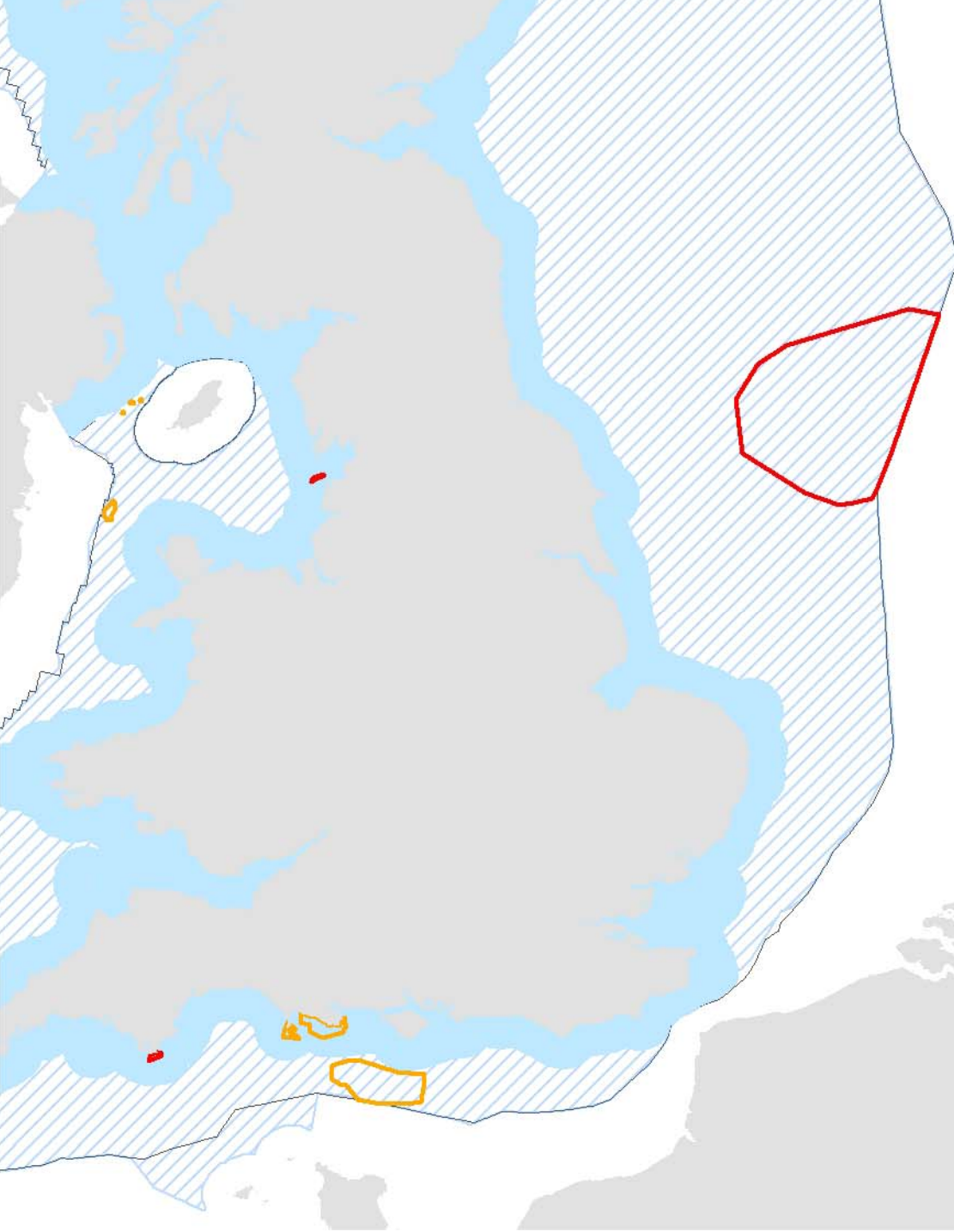


## ‘Areas of Search for SACs’

- 4-7 offshore areas of search for reefs
- 4 areas in inshore waters (Scotland and Northern Ireland)
- Aim to complete Natura network by 2012

## Sites in progress

- 3 possible SACs:
  - 2 inshore;
  - 1 offshore.
- 4 draft SACs:
  - 1 inshore;
  - 3 offshore.





## 2011 Offshore Consultation

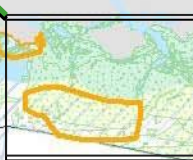
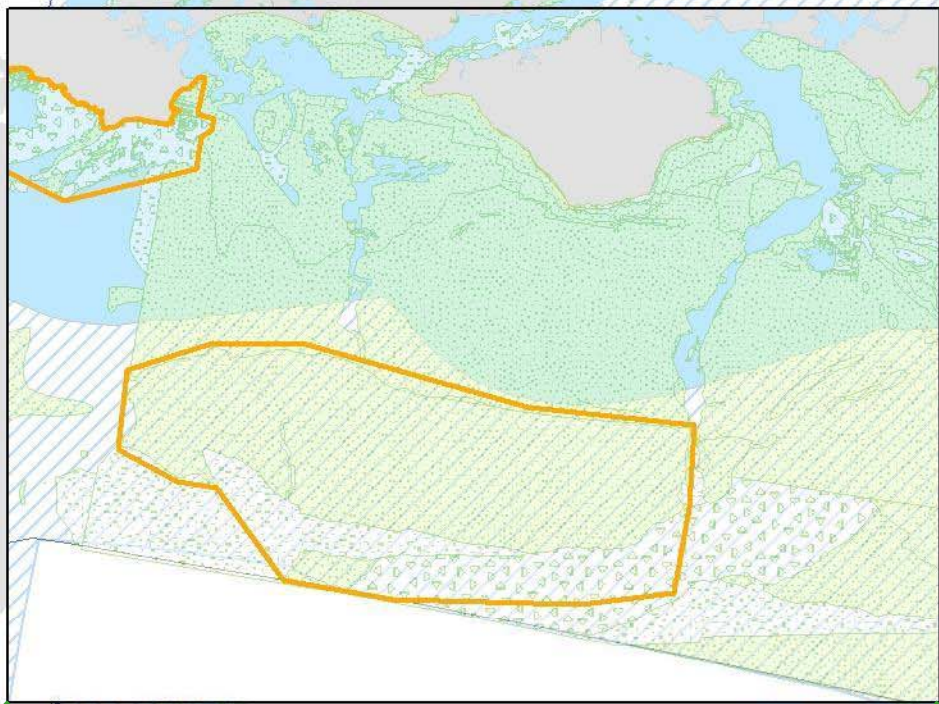
- Summer 2011
- 12 week public consultation
- Consultation on:
  - Scientific justification for site and boundary
  - Impact Assessment
- Information available from [jncc.defra.gov.uk](http://jncc.defra.gov.uk)



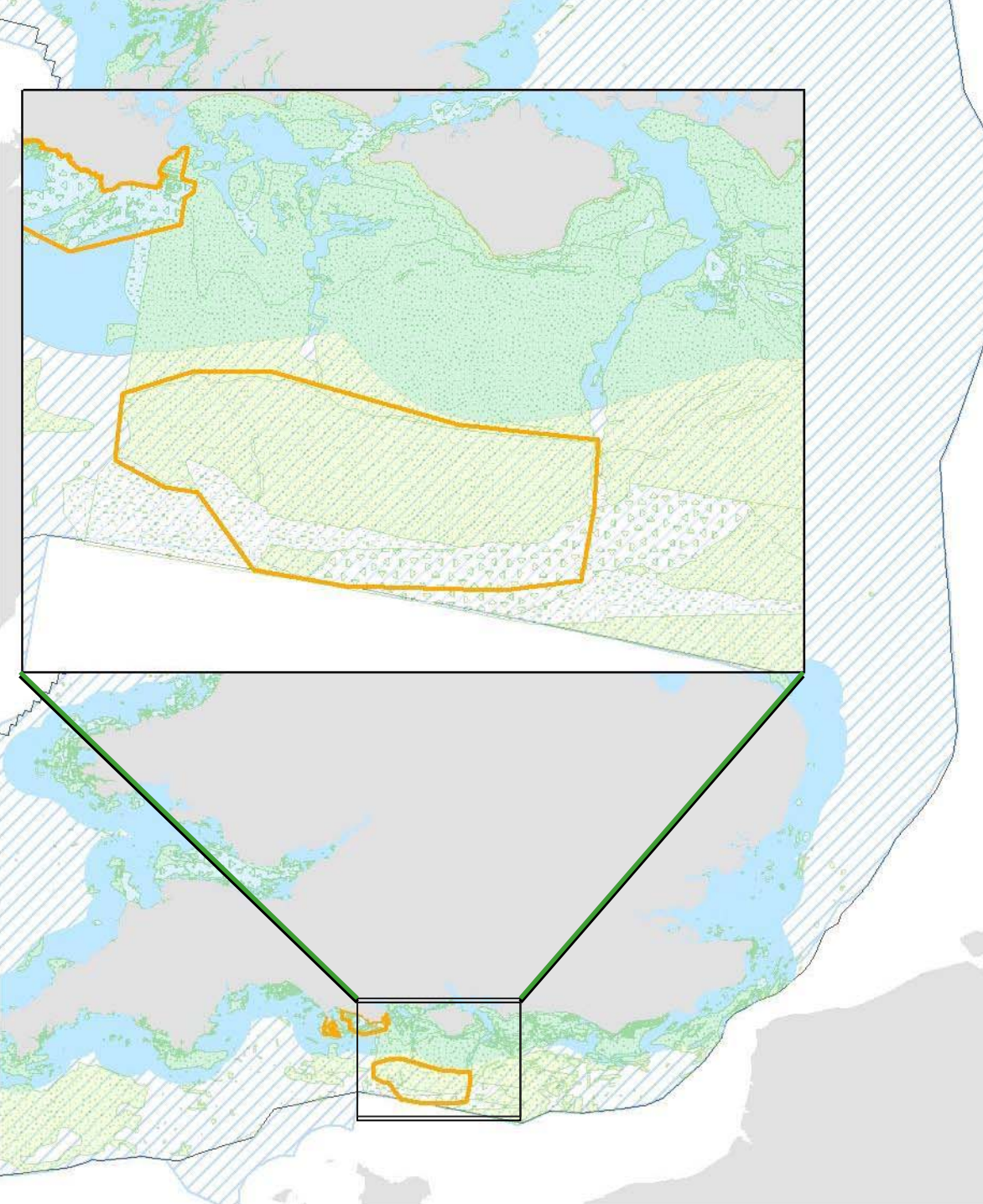


## Wight-Barfleur Reef

- Annex I bedrock and stony reef
- 1,373 km<sup>2</sup>



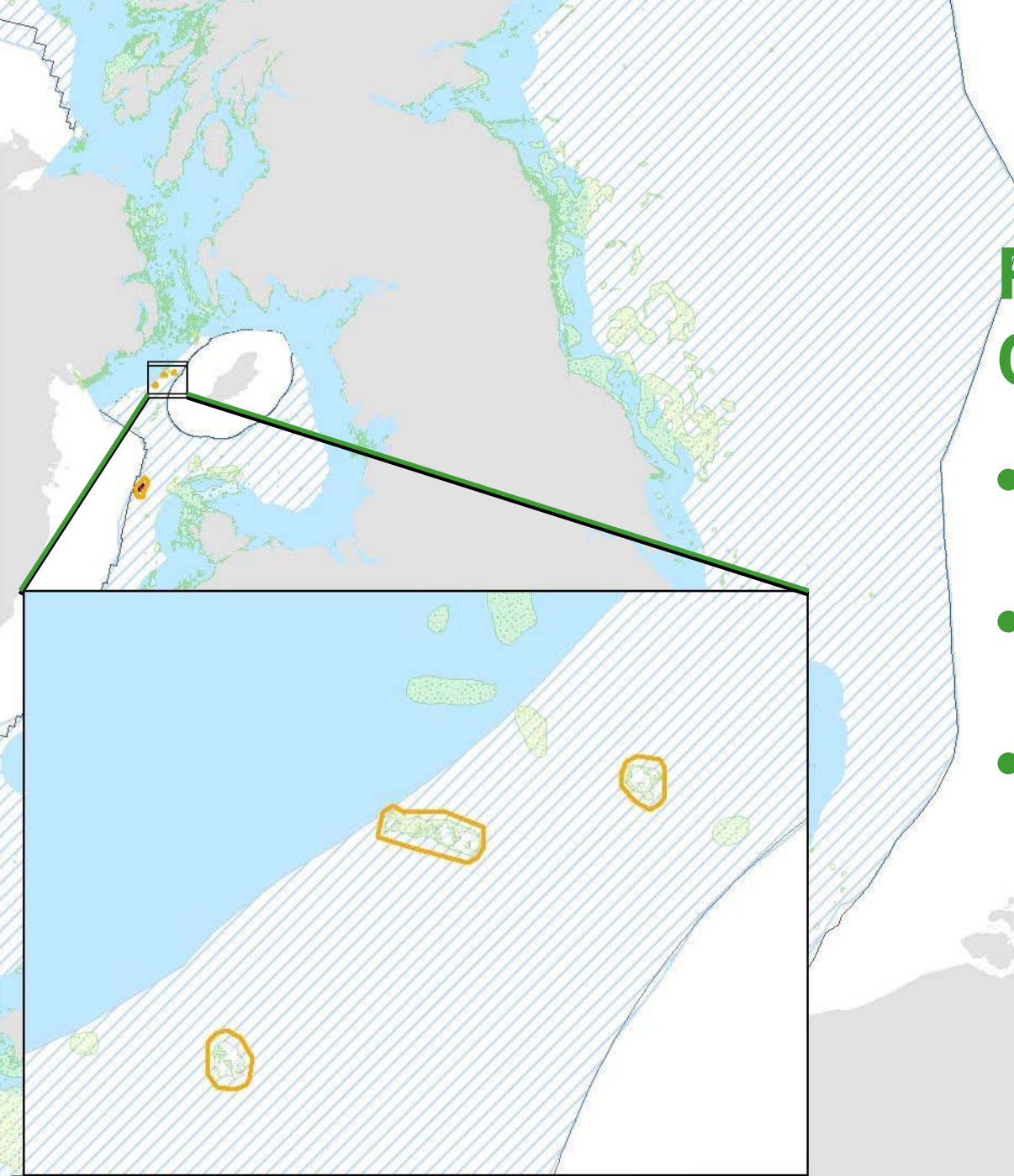




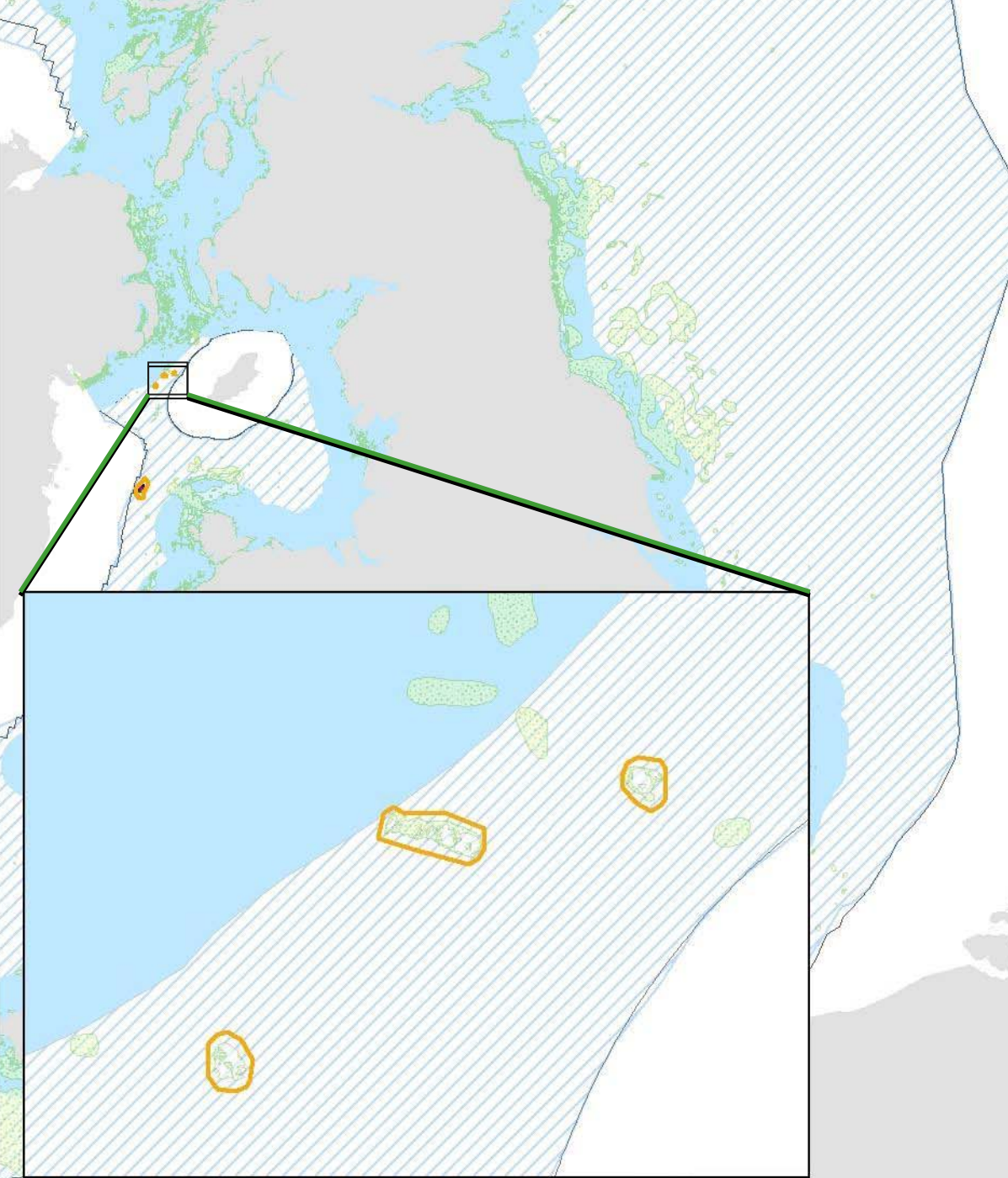


## Pisces Reef Complex

- Annex I stony and bedrock reef
- Composite site of three sections
- 6.97 km<sup>2</sup> in total



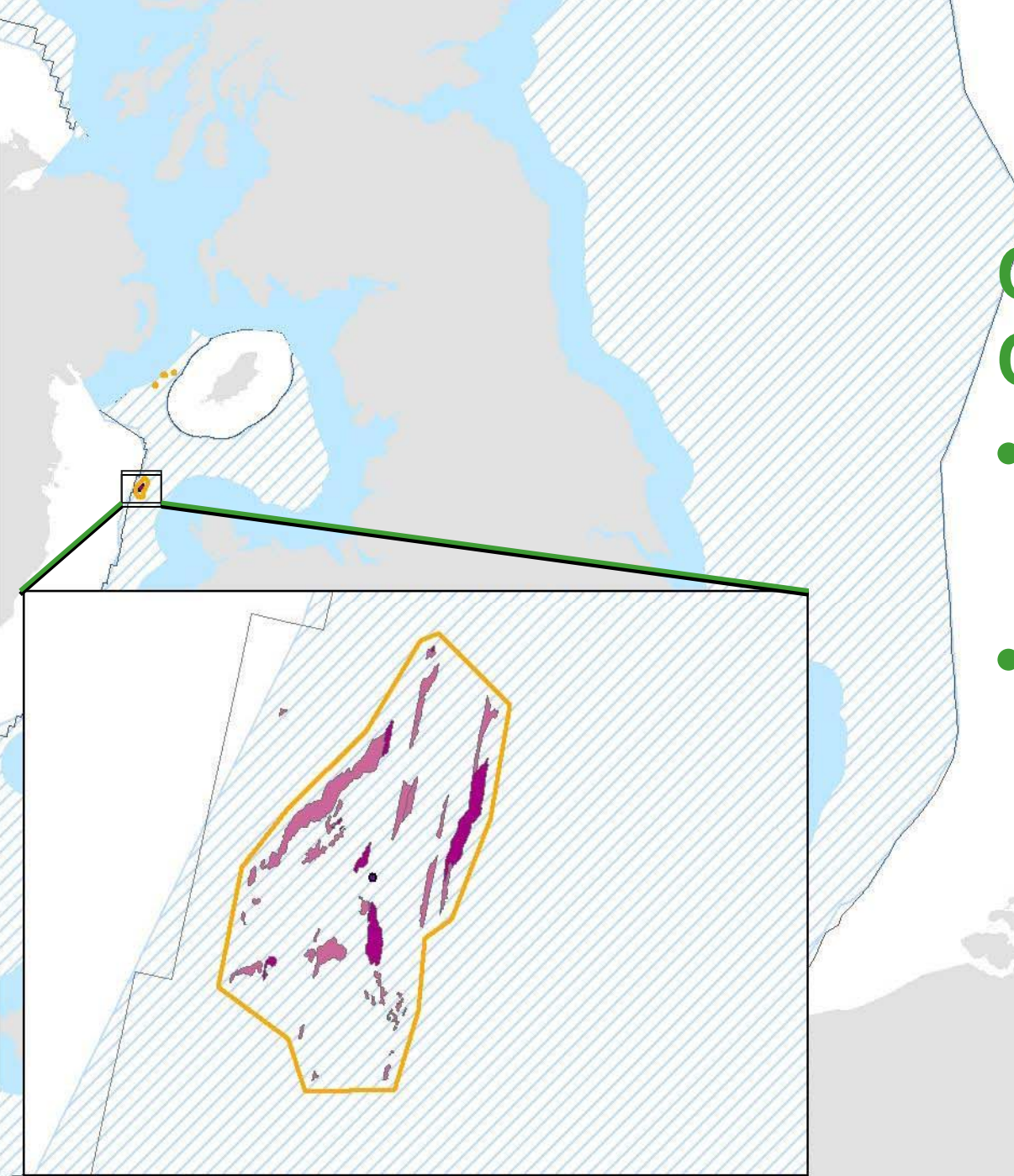




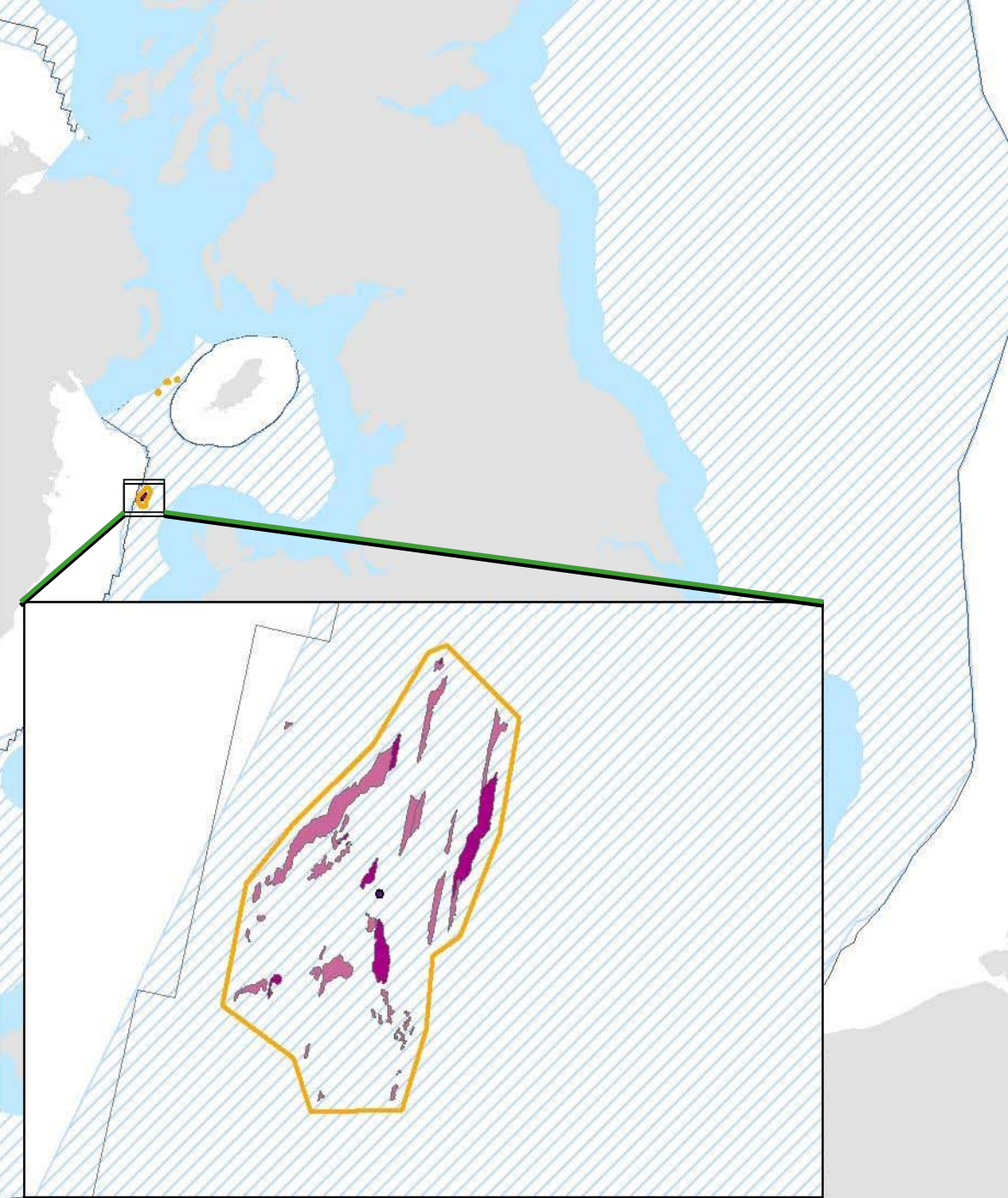


## Croker Carbonate Slabs

- Annex I submarine structures made by leaking gases
- 66 km<sup>2</sup>







# Impact Assessment

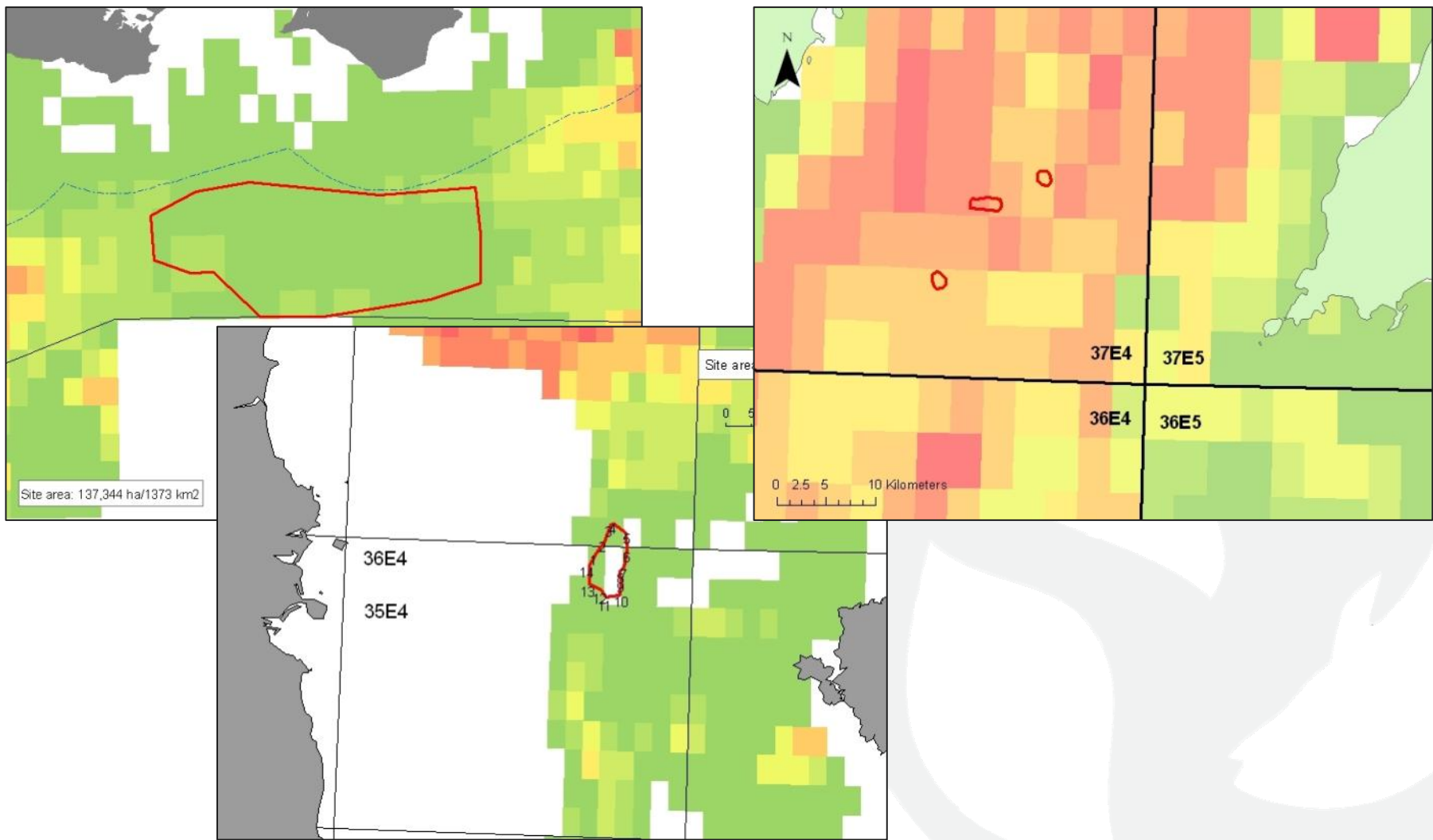
- Socio-economic effects of site designation on UK economy
- Assessment of known activities within sites (UK and European)
- Likely costs based on generalised possible management scenarios
- Possible management scenarios based on what may be needed to achieve Conservation Objectives for the site

# Assessment of value of fishing activity from the pSACs

- Coarse assessment of VMS and landings data
- VMS data from 2006-2009
- Assumes no fishing from vessels <15m
- Fisheries characterised from catch data by ICES rectangle (2006-2009 data) for proportion of rectangle within the region
- No catch data for non-UK vessels to non-UK ports



# Fisheries activity



# What consultation responses can we take into account?

- Scientific justification for identification of site:
  - Additional scientific data on distribution of habitats or species within the sites (with location information)
- Impact assessment:
  - Is our assessment of current fishing activity correct? If not, can you provide information?
  - Do you have any additional or alternative data we could use in the assessment?
  - Do you have information on fishing patterns prior to 2006?
  - Do you know if vessels <15m fish at the site?
  - If fishing were restricted over part of the site, how would you change your activities (eg. stop fishing, move elsewhere, change gear type)?

## Contact details:

All the information for the consultation will be available on the JNCC website once the consultation starts:

<http://jncc.defra.gov.uk/marineconsult>

Includes:

- Summary information
- Scientific justification for sites (SAC Selection Assessment document)
- Draft Conservation Objectives and Advice on Operations document
- Consultation Impact Assessment document
- GIS boundaries for sites
- Form for responses

To contact us about the consultation process - including responding to the consultation or any questions

email: [offshoreconsult@jncc.gov.uk](mailto:offshoreconsult@jncc.gov.uk)



**Any questions?**



**Johnny Murt & Amy Ridgeway**  
[Johnny.murt@jncc.gov.uk](mailto:Johnny.murt@jncc.gov.uk), [amy.ridgeway@jncc.gov.uk](mailto:amy.ridgeway@jncc.gov.uk)  
[www.jncc.gov.uk/marineprotectedareas](http://www.jncc.gov.uk/marineprotectedareas)

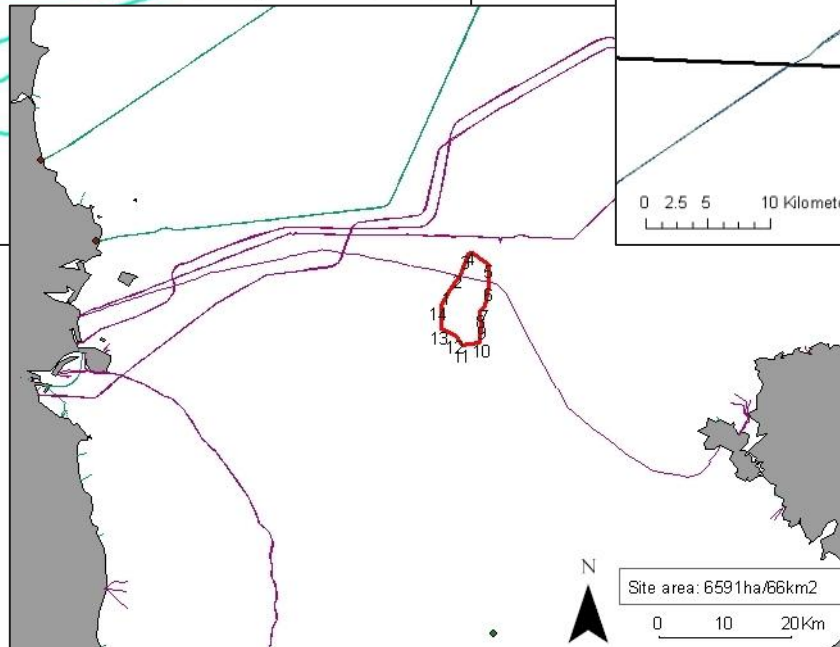
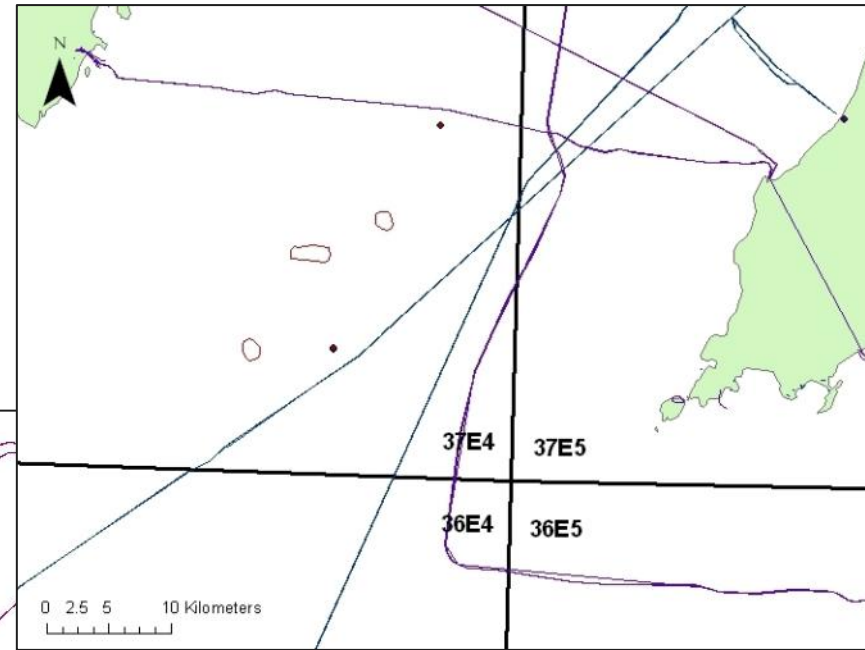
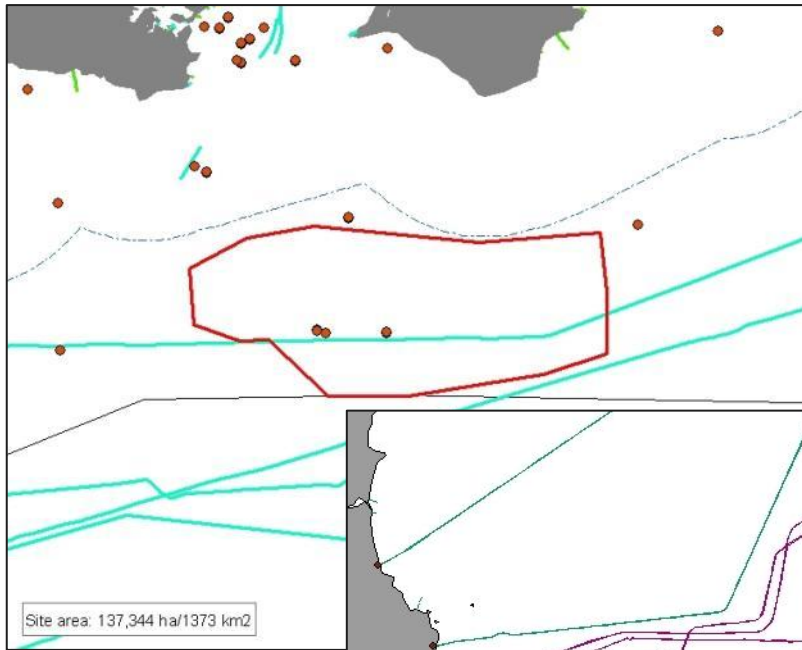




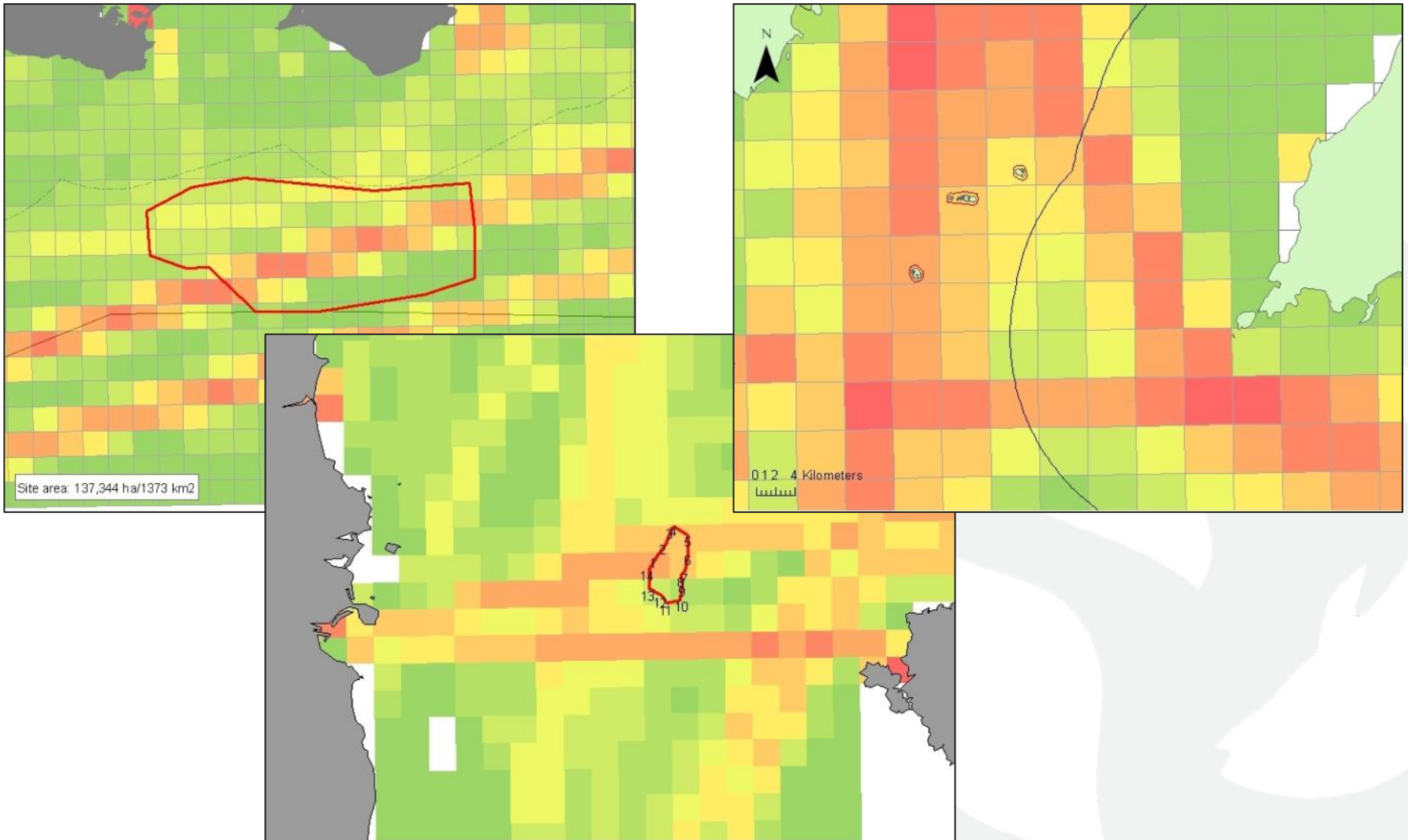
## Timetable for reporting on the consultation (approximate)

- 12 week consultation aiming to start in May and close in August 2011
- Sept-Oct 2011 JNCC assess responses, update impact assessment, prepare report
- End of 2011, report to UK Government
- Early 2012 submit SAC to European Commission
- 2012 onwards – complete Conservation Objectives for the site and develop advice on management measures needed

# Infrastructure activity



# Shipping activity





# Summary of assessment of fishing activity from the three sites

## Wight-Barfleur Reef

- England (97% of landings by value) and Belgium (2%)
- Lobsters (30%), sole (27%) and crabs (27%)
- Pots (61%) and beam (29%)

# Summary of assessment of fishing activity from the three sites

## Pisces Reef Complex

- Northern Ireland (93%) and Scotland (5%)
- Nephrops (71%), scallop (7%), and crabs (6%)
- Nephrops (72%), pots (13%), mechanised dredges (7%) and otter (bottom) trawls (4%)

# Summary of assessment of fishing activity from the three sites

## Croker Carbonate Slabs

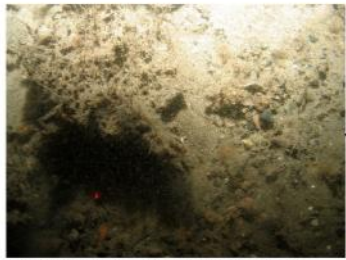
- Northern Ireland (85%), Belgium (11%) and Ireland (4%)
- Nephrops (68%), haddock (6%), sole (6%), cod (5%)
- Nephrops (76%), beam trawl (9%), otter (mid) (8%)

# Croker Carbonate Slabs

- Biological sampling points
  - Videos
  - Grabs
  - Dredge



A slab of MDAC 'pavement' with colonising hydroids

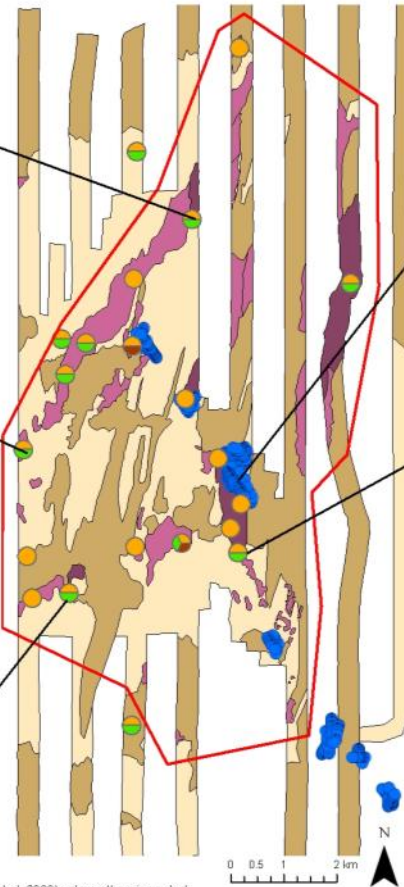


Low relief MDAC surrounded by circalittoral coarse sediment



Circalittoral Coarse Sediment

Still images taken on the JNCC CEND 11/08 survey (Whomersley et al., 2008) unless otherwise noted



High relief MDAC at the cliff feature identified on the SEA6 survey (Judd, 2005)



High relief MDAC with colonising *Alcyonium digitatum*

### Legend

  Draft SAC boundary v1.0

### JNCC survey groundtruthing stations

Video

Grab

Dredge

SEA6 survey groundtruthing stations

### Habitats

High Relief MDAC

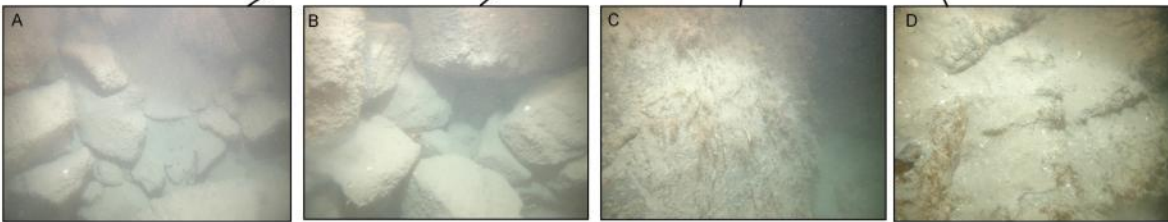
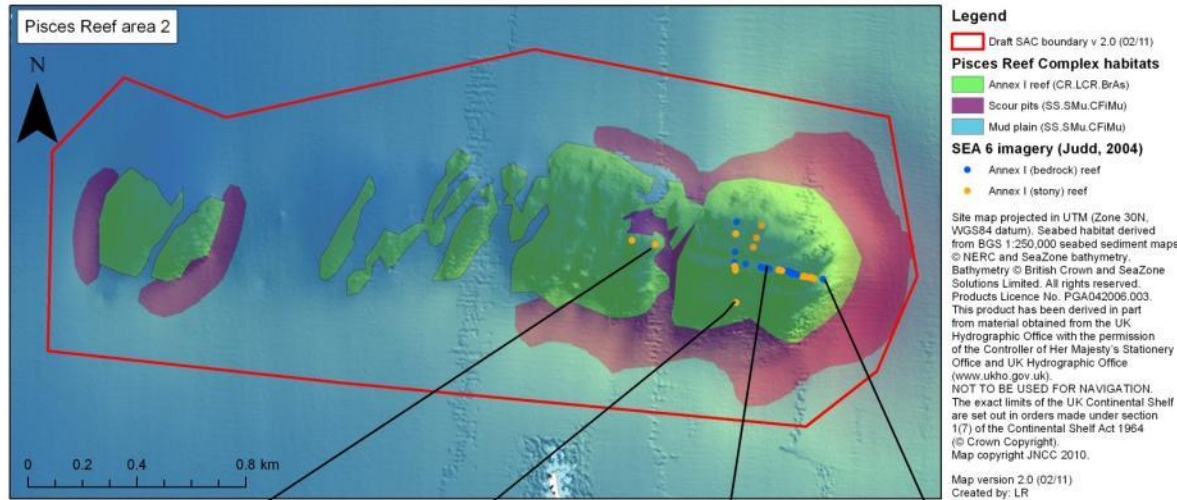
Low Relief MDAC

Circalittoral coarse sediment with bedforms

Circalittoral coarse sediment, no bedforms



# Pisces Reef Complex

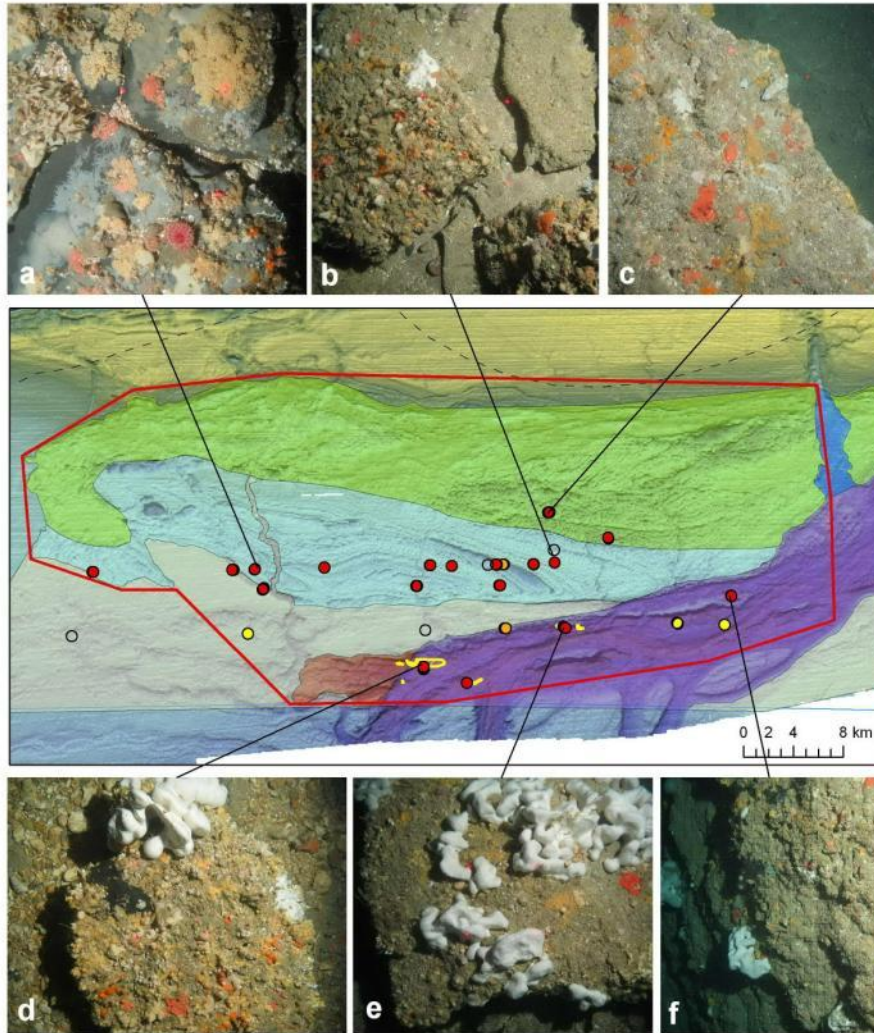


Still images taken on the SEA 6 (Judd, 2004) survey, showing the stony (A & B) and bedrock (C & D) reef habitat recorded on the outcropping rocky reef.

- BROADSCALE habitat map showing stony reef and bedrock reef

# Wight- Barfleur Reef

- Broadscale habitat map showing stony reef and bedrock reef



#### Substrate type and features

- Wealden Group and Greensand bedrock ridges
- Kimmeridge Clay and Purbeck bedrock ridges
- London Clay and Chalk lag gravels and palaeochannels
- Palaeovalley
- London Clay exposed bedrock
- Wealden Group and Greensand palaeochannel
- Draft SAC Boundary

#### Annex I Reef in Video Tows

- Bedrock
- Bedrock and stony
- Stony
- None
- ▭ Boulder reefs surveyed
- UK Continental Shelf limit
- - - UK Territorial seas limit