



NWW RAC
FAO The Chairman
Dublin

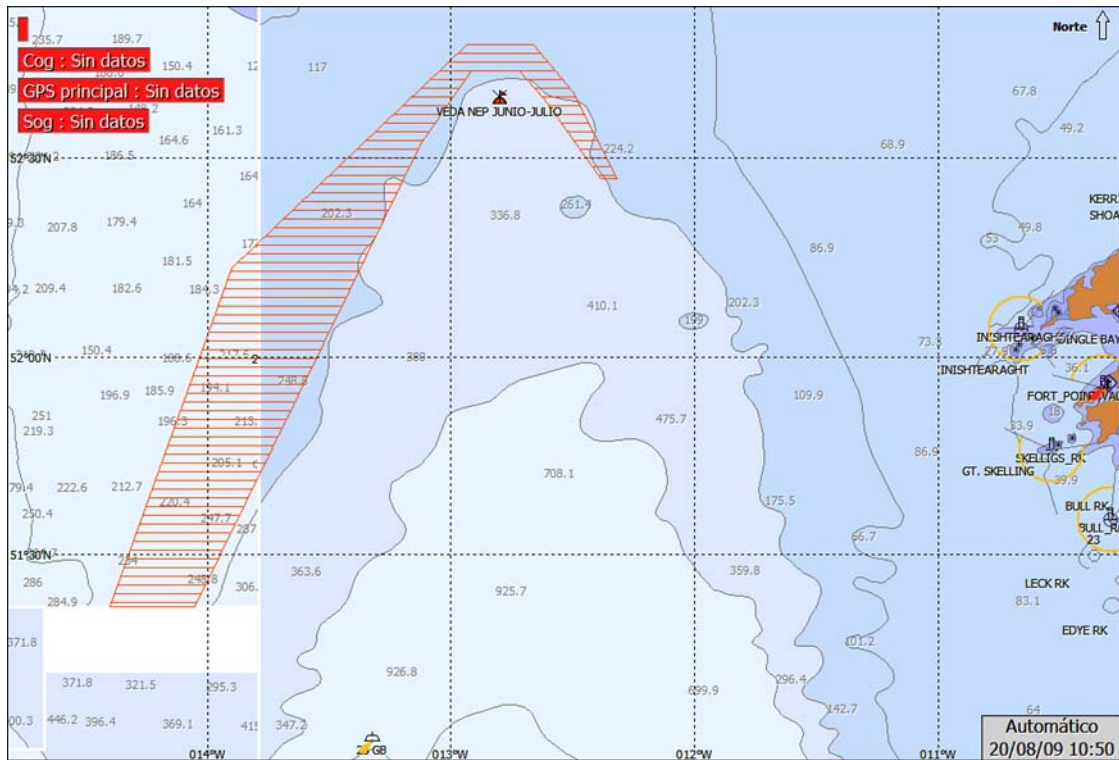
Re: Norway lobster fishery at Porcupine Bank. Sector proposal for establishing application of a temporary closed season between 15 May and 31 August 2010 in the NW sector of the fishing ground.

The undersigned Associations, concerned about the lower yield experienced in the last two years in the area of Porcupine Bank, in ICES division VIIc, propose the establishment of a closed-season area involving the prohibition of any type of trawl or gill net fishing between 15 May and 31 August every year, in the following geographic demarcations:

PROPOSED PROHIBITION OF TRAWL AND GILL NET FISHERY FOR THE PROTECTION OF NORWAY LOBSTER AT PORCUPINE BANK

Proposed dates: 15 May - 31 August

Nº	North	West
A	52° 27'	12° 19'
B	52° 40'	12° 30'
C	52° 47'	12° 39,600'
D	52° 47'	12° 56'
E	52° 13,5'	13° 53,830'
F	51° 22'	14° 24'
G	51° 22'	14° 03'
H	52° 10'	13° 25'
I	52° 32'	13° 07,500'
J	52° 43'	12° 55'
K	52° 43'	12° 43'
L	52° 38,800'	12° 37'
M	52° 27'	12° 23'
Ñ	52° 27'	12° 19'



This purpose of this initiative, which is submitted to the North Western Waters Regional Advisory Council – NWW RAC - for its study and the passing of the appropriate resolutions, is as follows:

- ✓ Contribute to improving the yields in the catches of Norway lobster at the Porcupine Bank fishing ground.
- ✓ Protect the species during a period of the year when the majority – 70 - 80% - are females.
- ✓ Protect the egg-laying – spawning – of the species at the appropriate time of the year in biological terms.
- ✓ Assure the feasibility of the fishery for all Community fleets that have the Norway lobster as a target species.
- ✓ Contribute sectorally at our own initiative to the sustainability of the fishery, in a framework of interaction and responsibility, taking into account not only the financial stability of the fleets affected, but also the benefits, not without effort, for companies and for the fishing grounds.

Following this same line of action, the undersigned Associations trust that other RACs are undertaking initiatives of this type with regard to Norway lobster. Similarly, they hope that the respective oceanographic institutes and state fishery authorities will contribute to this initiative by giving their support and furnishing whatever data (besides their own initiatives and suggestions) may be required by the EU Commission for the implementation of this proposal, which we hope will become effective in 2010.

Lastly, the fishery sector suggests to the EU Commission that, when the closed season proposal has been implemented, the STECF be requested, once three years have passed since its application, to assess the state of the biomass of the Norway lobster at Porcupine Bank and adjoining areas and then inform the sector of its results by way of the NWWRAC and the pertinent bodies.

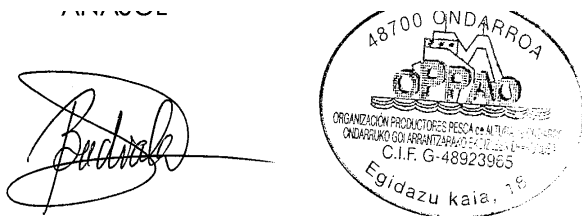
Vigo, Coruña, Celeiro and Ondárroa, on 19 October 2009



Signed: JESÚS ETCHEVERS DURÁN
(seal of ARPESCO)



Signed: JESÚS A. LOURIDO GARCÍA
(seal of CELEIRO)



Signed: VÍCTOR BADIOLA MORAL
(seal of OPPAO)



Signed: HUGO C. GONZÁLEZ GARCÍA
(seal of ANASOL)