

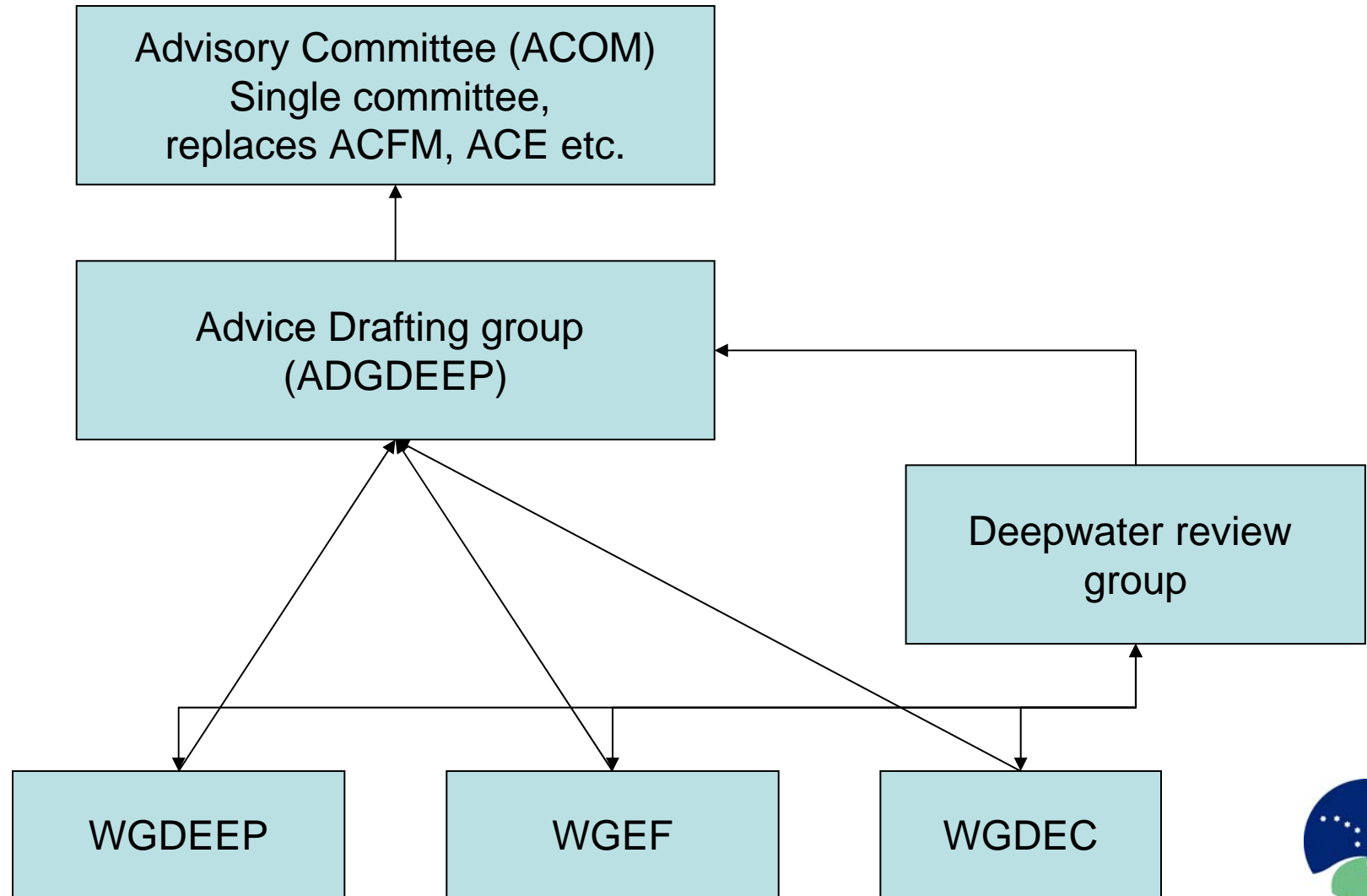
Deep-water fish stocks ICES advice 2008

**Tom Blasdale
ICES WGDEEP**



International Council for the Exploration of the Sea
Conseil International pour l'Exploration de la Mer

New ICES advisory process



**2008 Advice on deep water species now available
on ICES Website under “widely distributed species”**

<http://www.ices.dk/advice/icesadvice.asp>



Black Scabbard Fish



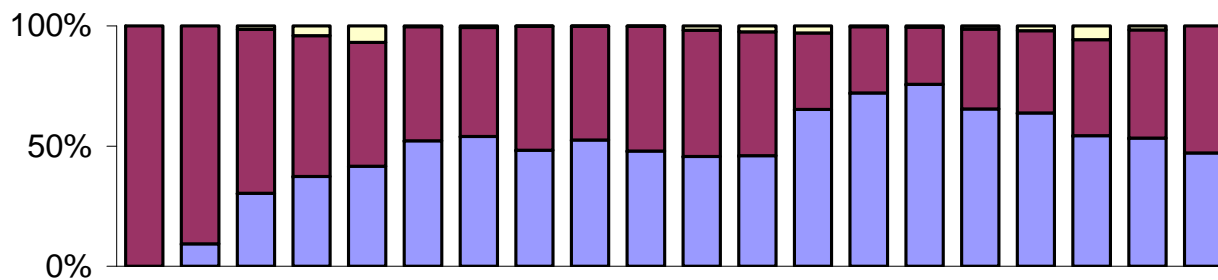
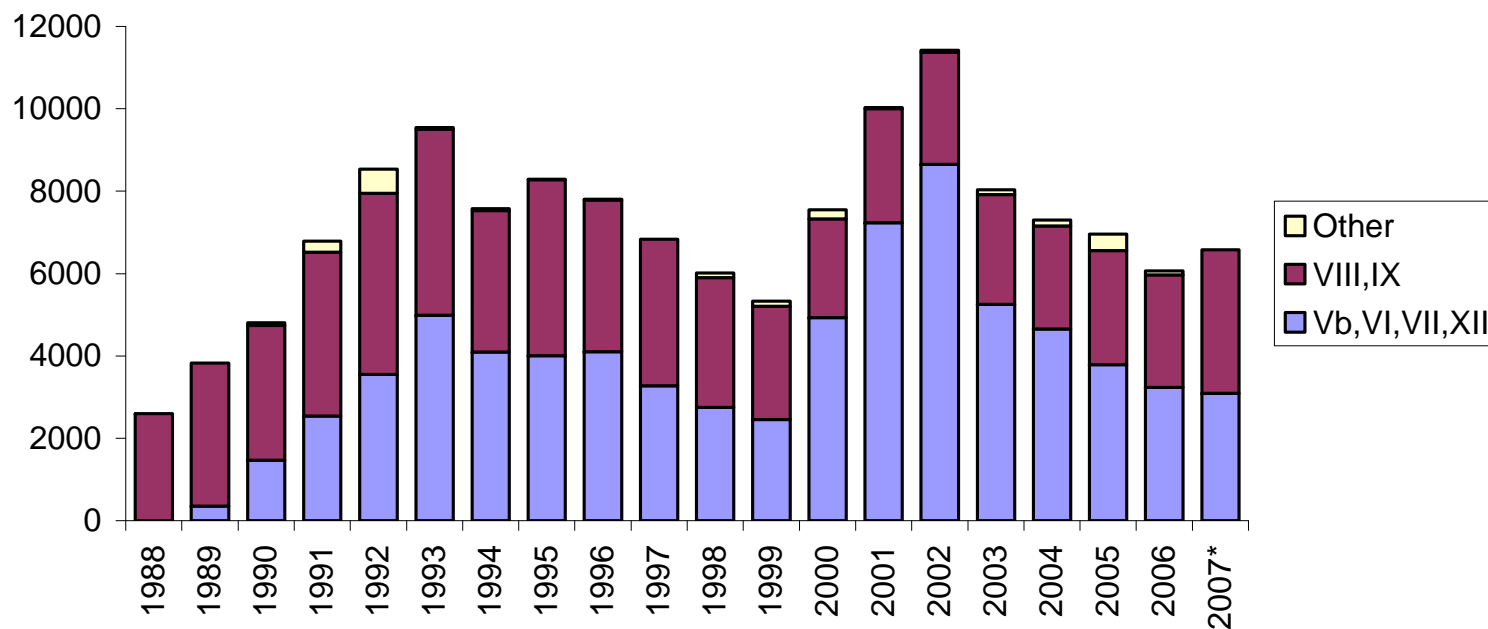
Stock structure uncertain.

Distributed over a wide area which may be composed of several populations.

Three management units considered:

- Northern (Subareas Vb, VI, VII, and XIIb);
- Southern (Subareas VIII and IX);
- Other areas (Subareas I, II, IIIa, IV, X, Va, and XIV).





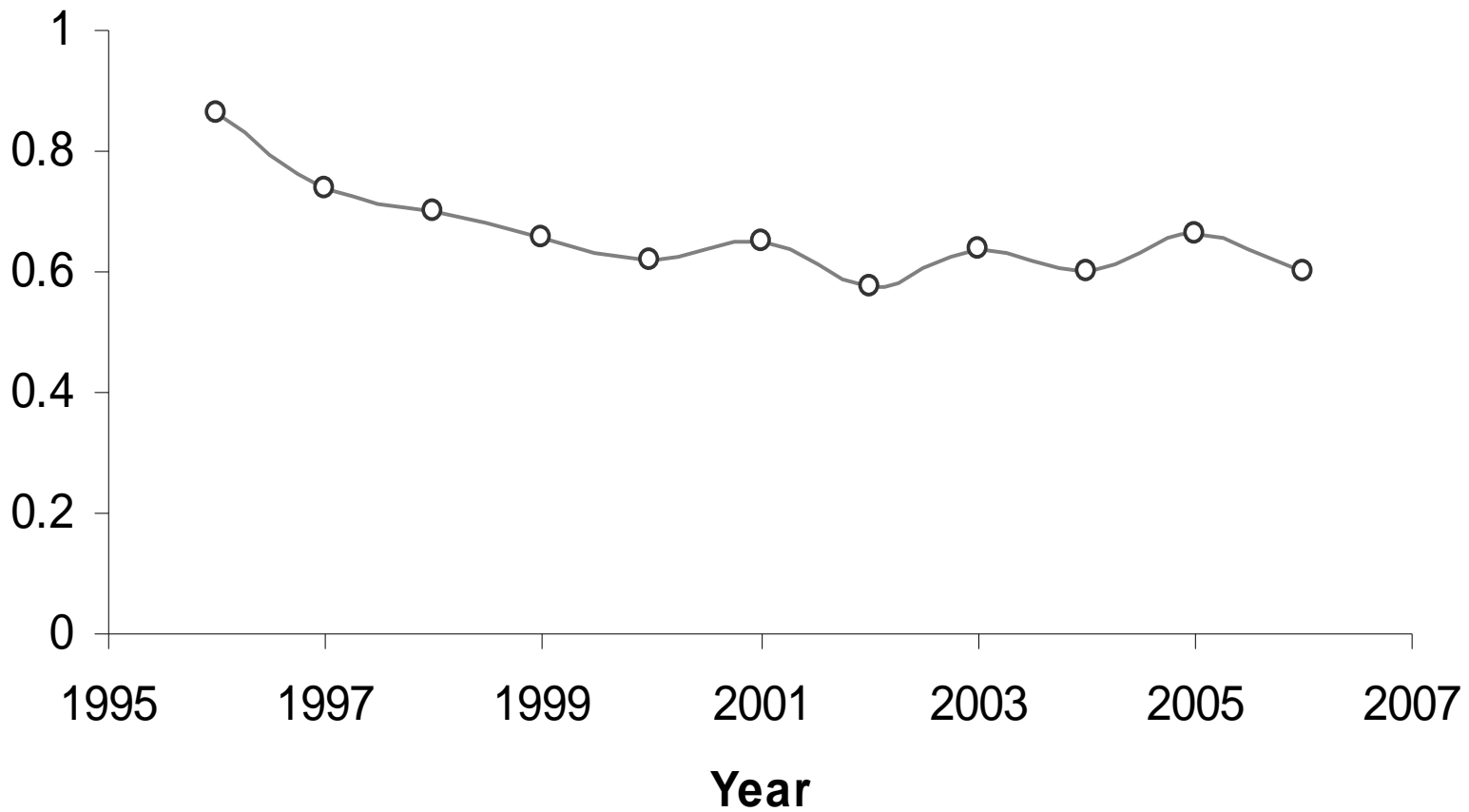
Landings of black scabbardfish by management unit





Cpue of French trawlers: directed cpue of the reference fleet (landings for fishing trips where black scabbardfish comprise >10% of total landings). In a reference area (28 statistical rectangles to the northwest of Scotland) in Vb and VI





Black scabbardfish: relative cpue from the Portuguese longline fishery.



Advice 2008

Northern area

- catches should be constrained to 2000 t (50% of the level before the expansion of the fishery, 1993–1997).
- The fishery should not be allowed to expand unless it can be shown that it is sustainable.
- Current TAC 3042t



Advice 2008

Southern area

- Recent levels of catches do not appear to have had a negative impact.
- ICES recommends that catches in these areas should be constrained to 2800 t (average 2003–2007)



Deepwater sharks



Leafscale Gulper Shark

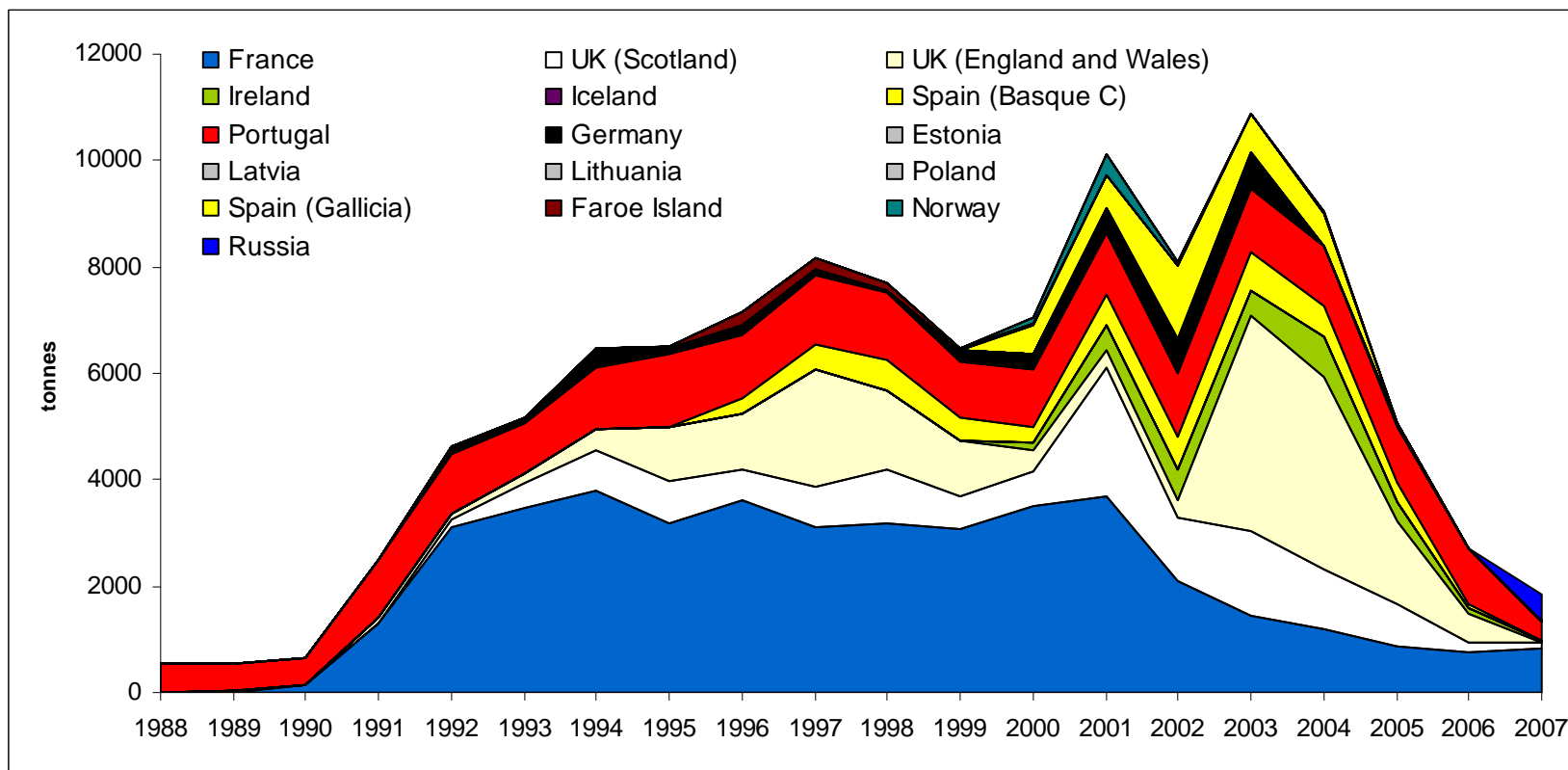


Portuguese Dogfish



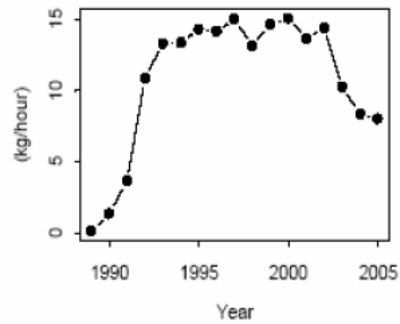
- Species still not separated in landings data by some countries.
- Landings data is for combined “siki” sharks
- Mainly Portuguese dogfish and leafscale gulper sharks but also small quantities of other species.
- Treated as a single stock in Northeast Atlantic



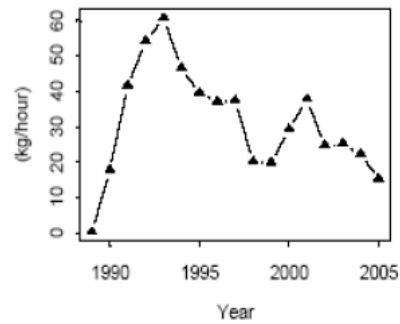


Deepwater “siki” sharks in the northeast Atlantic. Working group estimates of landings, by country.

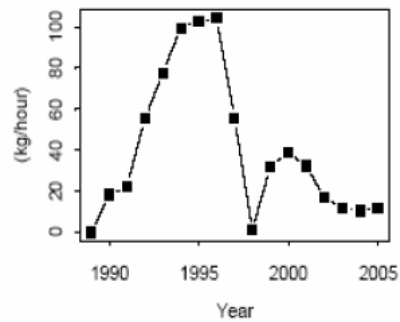
Reference Area in VI - Edge



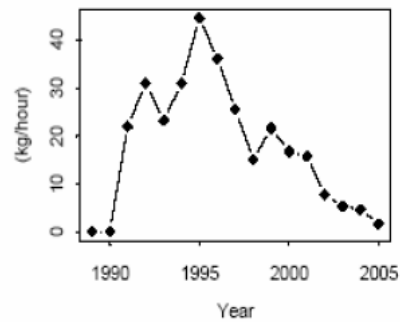
Reference Area in VI - Others



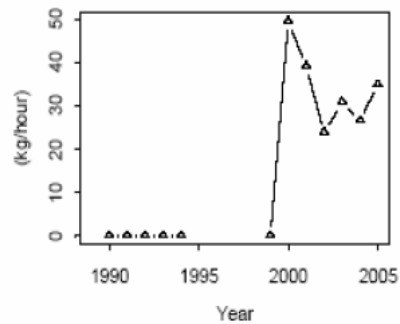
Reference Area in V



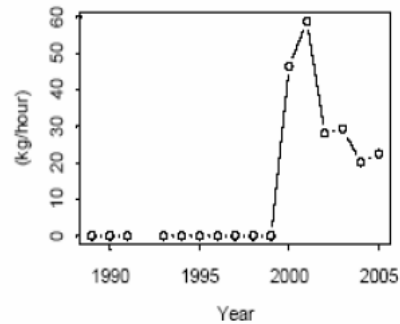
Reference Area in VII



New grounds in V

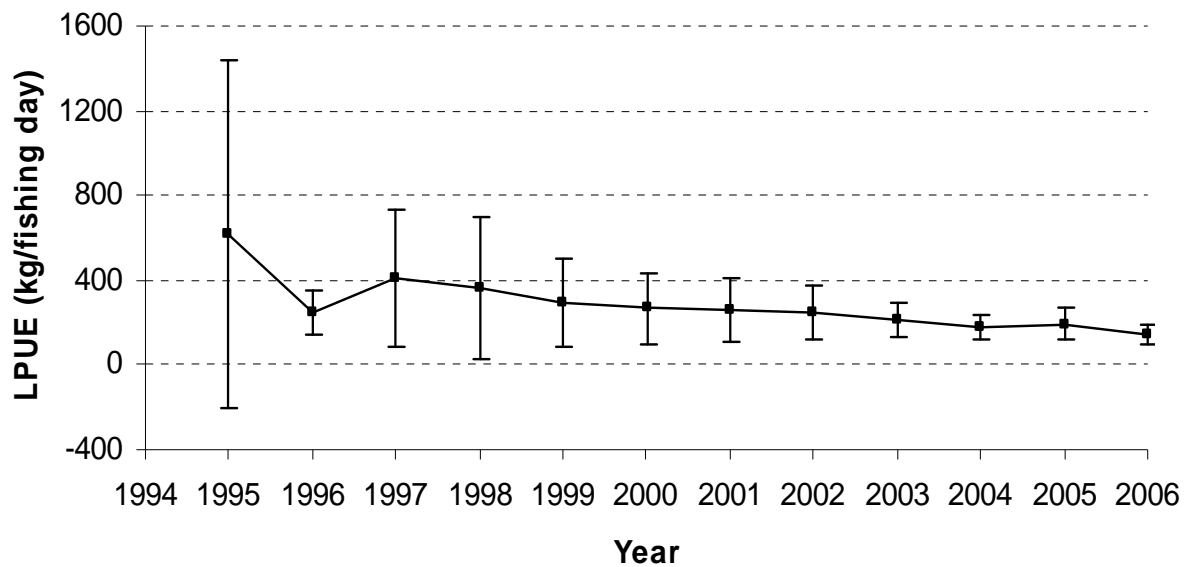


New grounds in VI

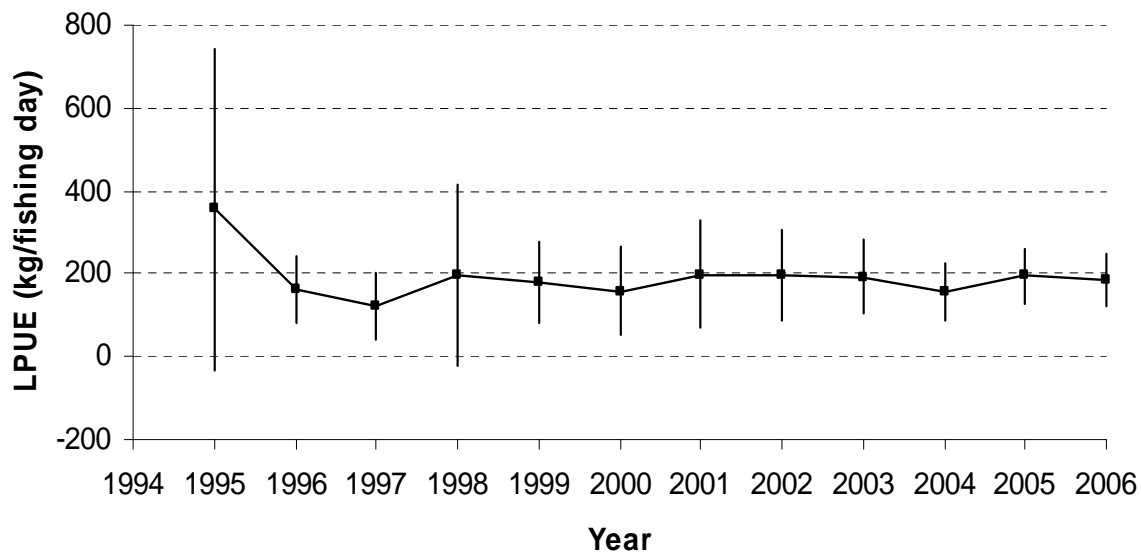


French cpue of “sikis” by ICES Subarea (ICES, 2006).





Portuguese dogfish – Portuguese longline mean annual lpue +/- std. deviation for ICES Subarea IX (ICES, 2008).



Leafscale gulper shark – Portuguese longline mean annual lpue +/- std. deviation for ICES Subarea IX (ICES, 2008).

2008 ICES Advice

- Due to its very low productivity, Portuguese dogfish and leafscale gulper shark can only sustain very low rates of exploitation.
- The rates of exploitation and stock sizes of deepwater sharks cannot be quantified. However, based on the cpue information, Portuguese dogfish and leafscale gulper shark are considered to be depleted.
- Given their very poor state, ICES recommends a zero catch of Portuguese dogfish and leafscale gulper shark.



Comparison with previous advice

Year	ICES Advice	Single-stock exploitation boundaries	Predicted catch corresponding to advice	Predicted catch corresponding to single-stock exploitation boundaries	Agreed TAC ¹	ACOM Landings	Disc. slip.	ACOM Catch
1992	No advice					4.6		
1993	No advice					5.2		
1994	No advice					6.5		
1995	No advice					6.5		
1996	No advice					7.2		
1997	No advice					8.2		
1998	No advice					7.7		
1999	No advice					6.5		
2000	No advice					7.1		
2001	No advice					10.1		
2002	No advice					8.1		
2003	No advice					10.9		
2004	No advice					9.0		
2005	Zero catch	F=0	0	0	7.1	5.1		
2006	Zero catch	F=0	0	0	7.1	2.7	NA	
2007	Zero catch	F=0	0	0	2.6	1.7	NA	
2008	Zero catch	F=0	0	0	1.7	-	NA	
2009	Zero catch	F=0	0	0				