



ICES advice for 2009

North western waters

Presented at: North Western RAC, Madrid, 3-4 July 2008

Martin Pastoors
(vice-chair of ICES Advisory Committee)



[Skip intro](#)



Sustainable exploitation is the key to
fisheries management



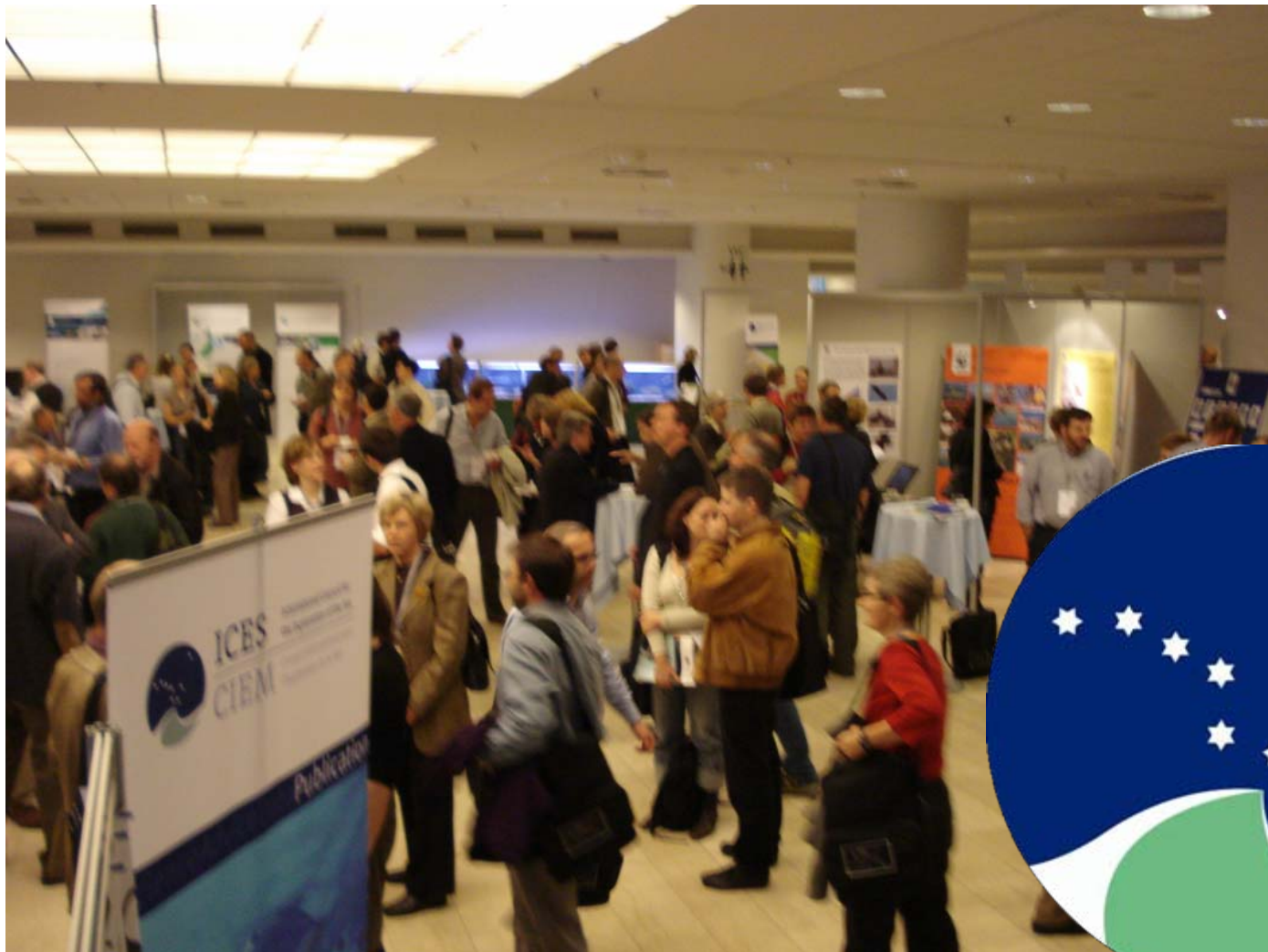


You are looking for relevant
information on sustainable exploitation



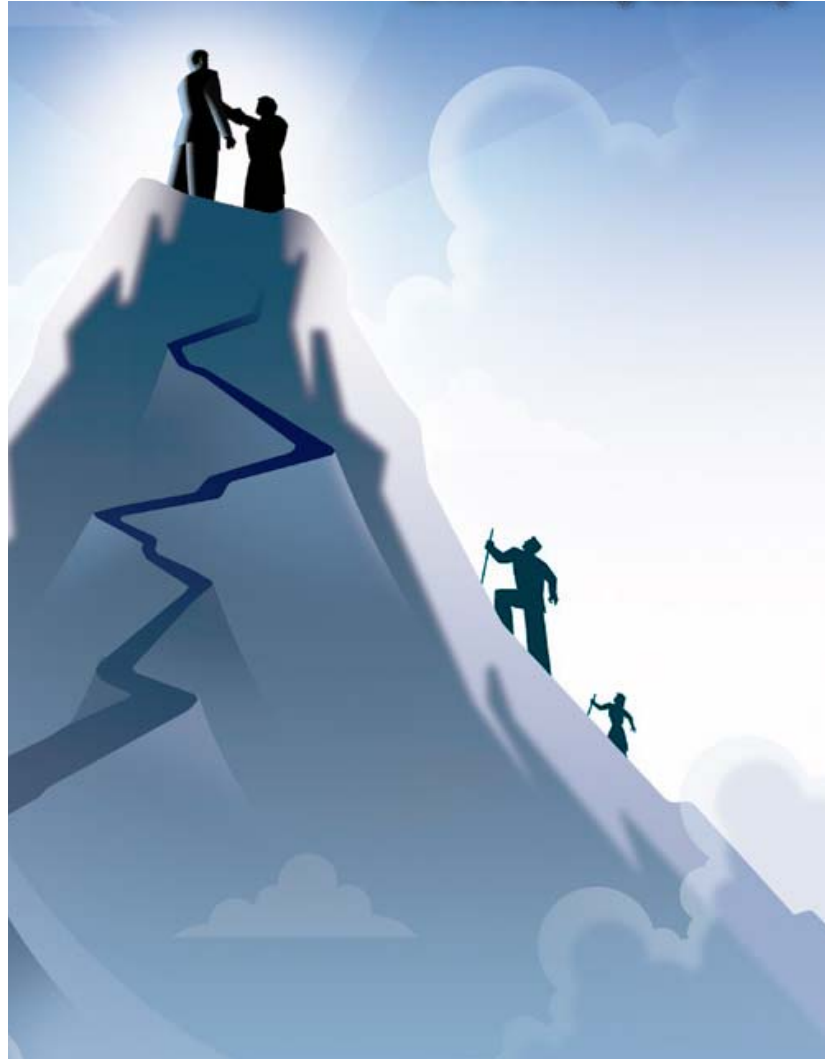


ICES has released new information on the status of ecosystems and fish





You want to be **on top**
of the new information





Review the basis and the content of the new information



How?



Big picture?



My stock?

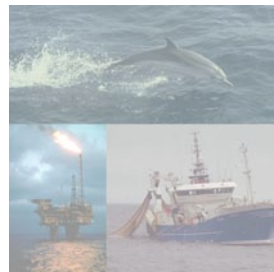
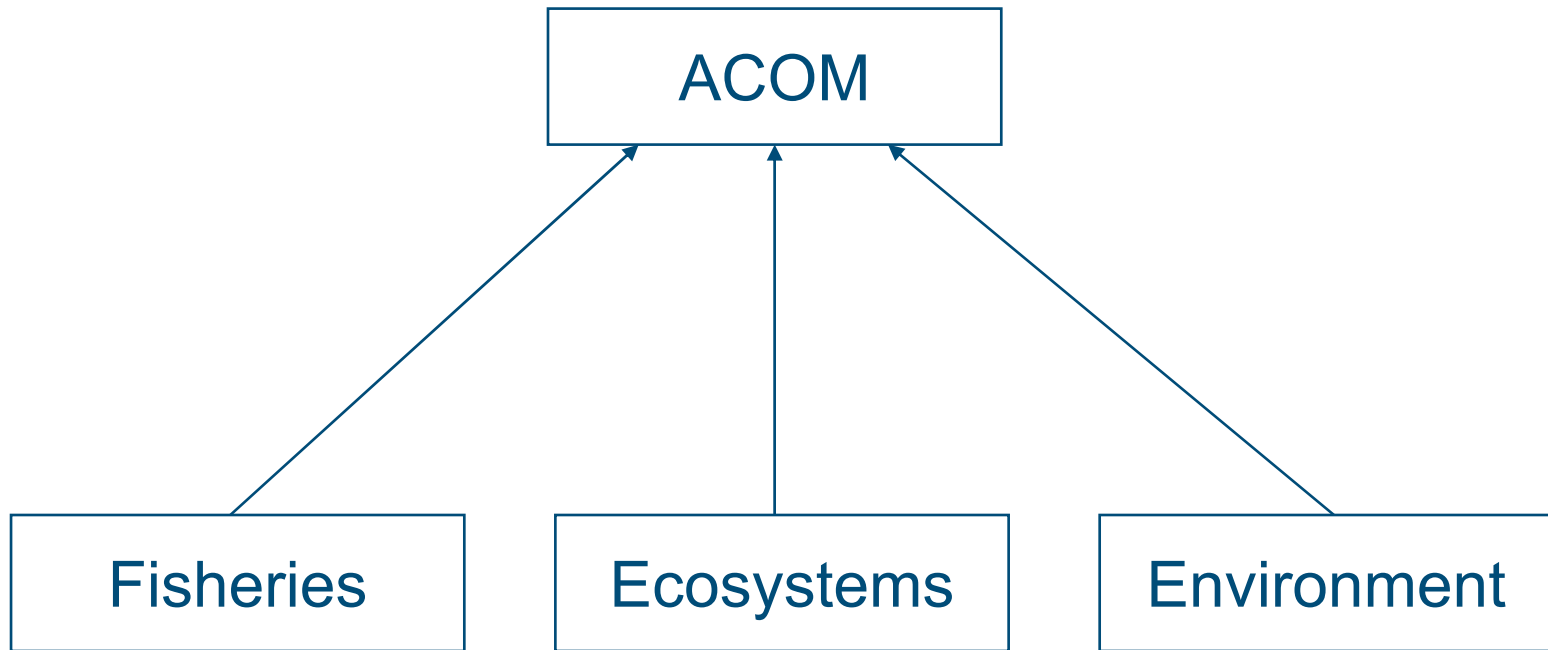


1. How did we do it?



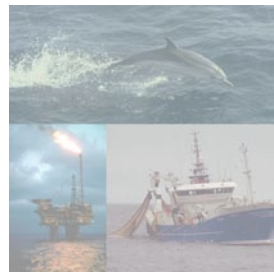


Changed to one integrated advice





New timing: advice early in the year





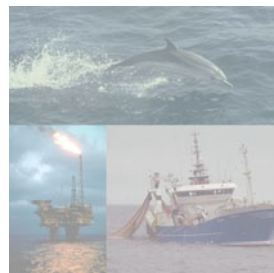
“No new advice”

ang-iwi	Anglorfich Sub-area IV (North Sea) and VI (W. Scotland &
cod-scow	Cod in Division VIa (West of Scotland)
had-scow	Haddock in Division VIa (West of Scotland)
had-rock	Haddock in Division VIb (Rockall)
her-vian	Herring in Division VIa (North)
her-irlw	Herring in Divisions VIa (South) and VIb,c
nep-via	Nephrops in Division VIa (Management Area C)
cod-rock	Cod in Division VIb (Rockall)
meg-cork	Megrim in Sub-area VI (West of Scotland and Rockall)
nop-scow	Norway pout in Division VIa (West of Scotland)
can-scow	Sandeel in Division VIa (West of Scotland)
whg-scow	Whiting in Division VIa (West of Scotland)
whg-rock	Whiting in Division VIb (Rockall)





Still to come: data workshops





Still to come: fisheries & ecosystem focus

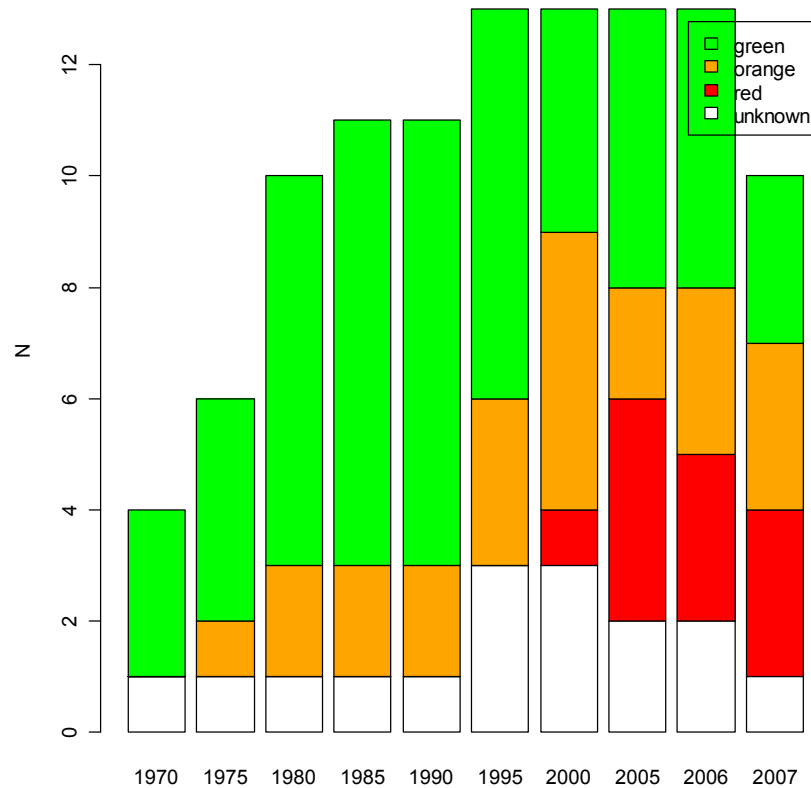


2. The big picture?

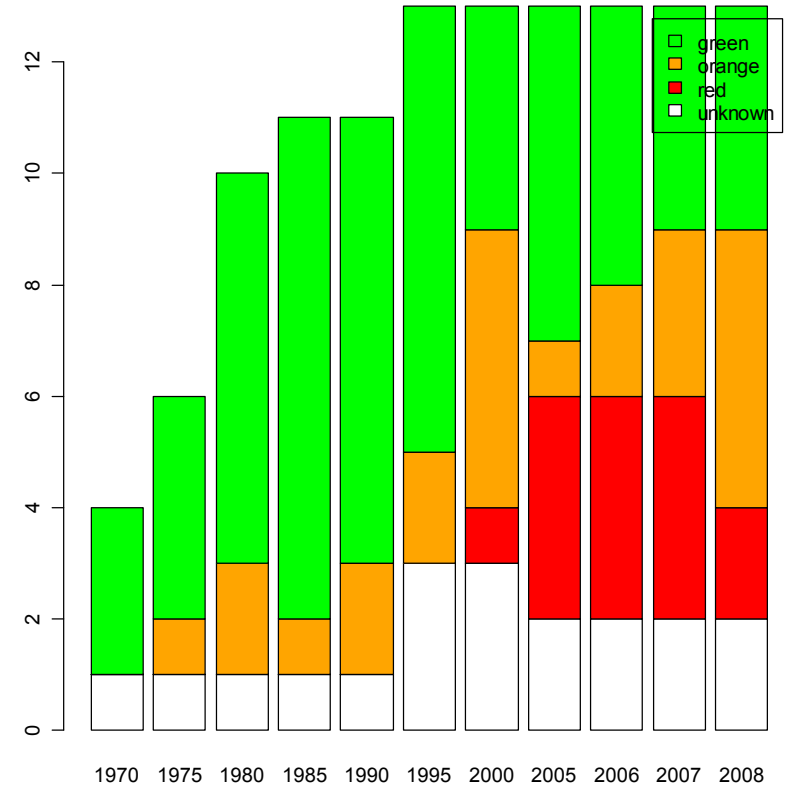




Stock status largely similar to last year



2007



2008

Number of stocks in Celtic Seas and West of Scotland relative to biomass reference points





Nephrops advice: stocks appear stable





Sharks and Rays advice: mixed message

Species	Area	State of stock	Advice
Common skate	VI	Depleted	No target fisheries
Cuckoo ray	VIa	Stable/increasing	Status quo catch
Thornback ray	VIa	Stable/increasing	Status quo catch
Spotted ray	VIa	Stable/increasing	Status quo catch
Lesser-spotted dogfish	VIa and VII	Stable/increasing	Status quo catch
Sandy ray	VI	Uncertain	No advice
Blonde ray	VIa, VIIa and VIIf	Uncertain	No advice



3. What happened
to my stock?





- WG 1- West of Scotland

- Nephrops
- Saithe
- Megrim (*)

- Anglerfish (VIIb-k, VIIIab) (*)
- Plaice (Celtic Sea, VIIlh-k (*), VIIbc (*)
- Northern hake



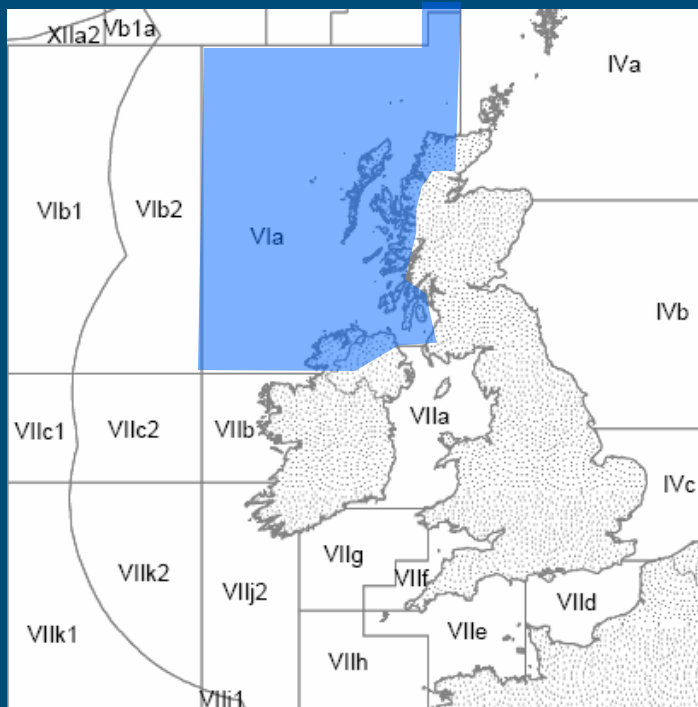
- Nephrops
- Sole
- Whiting (*)

- Sole in VIIc
- Cod in IV, VIId and Skagerrak

(* No new advice in 2008)



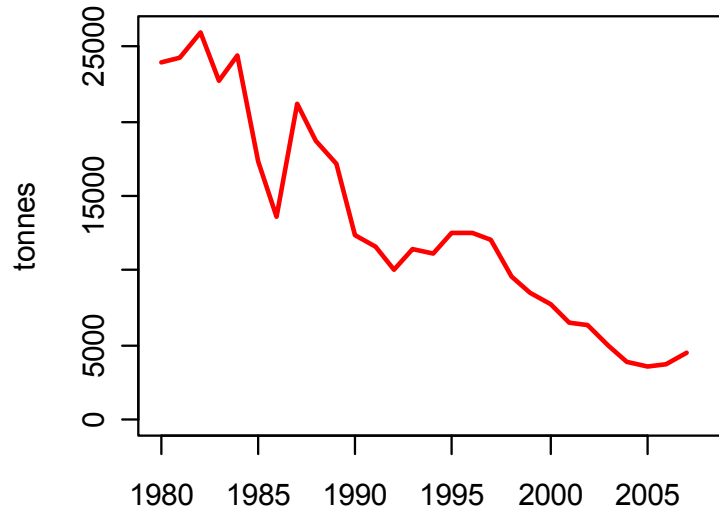
Cod West of Scotland (VIa North)



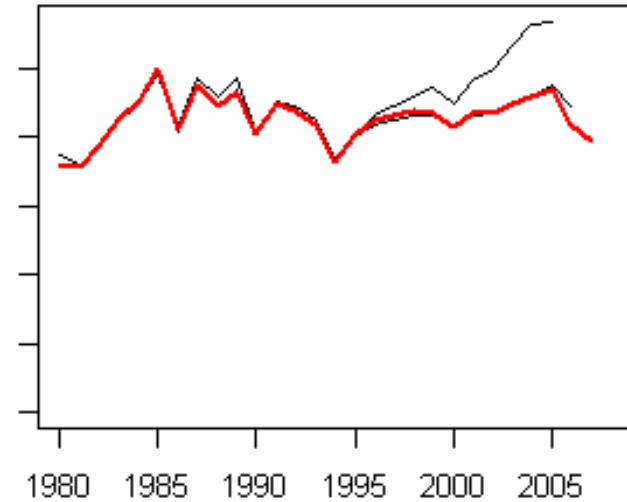


Cod West of Scotland: trends

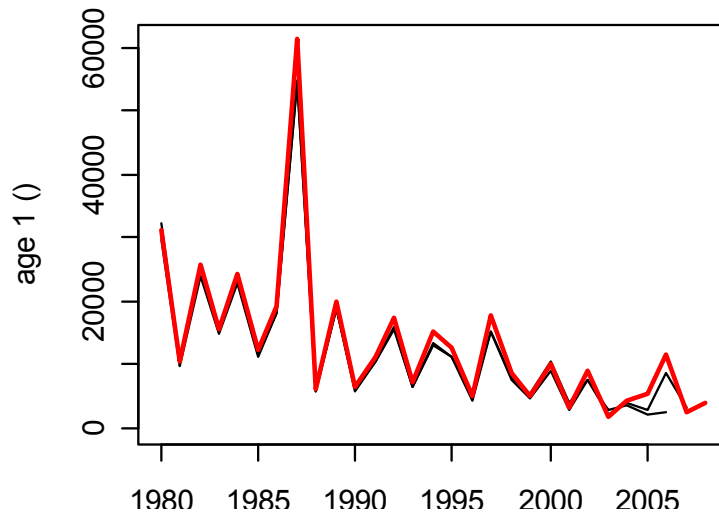
Landings



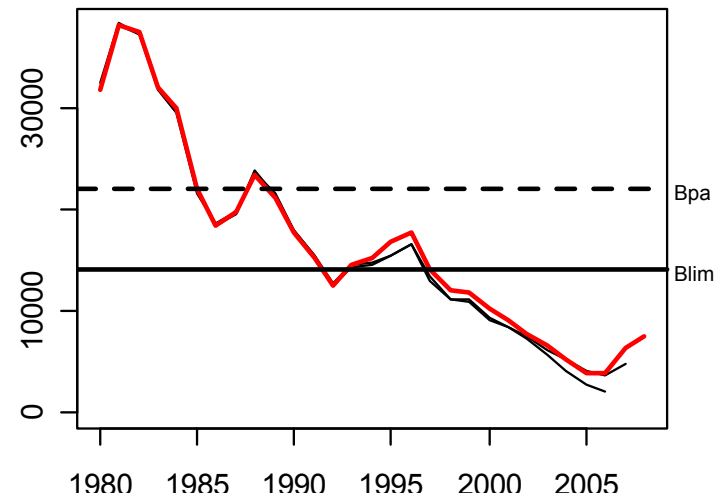
Total mortality



Recruitment



SSB



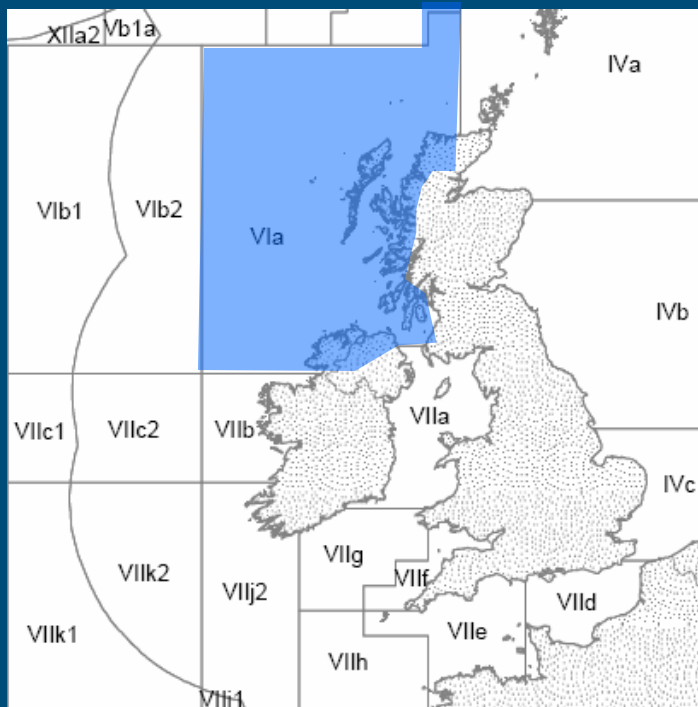


Cod West of Scotland: advice

- Advice last year and this year
 - zero catch of cod



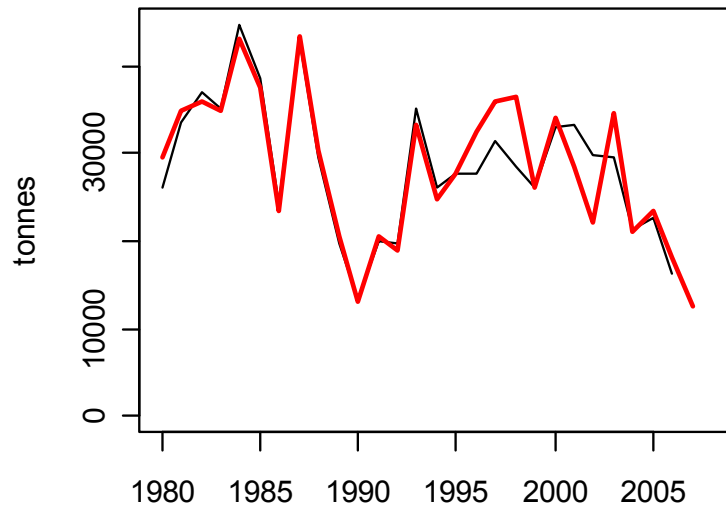
Haddock West of Scotland (VIa North)



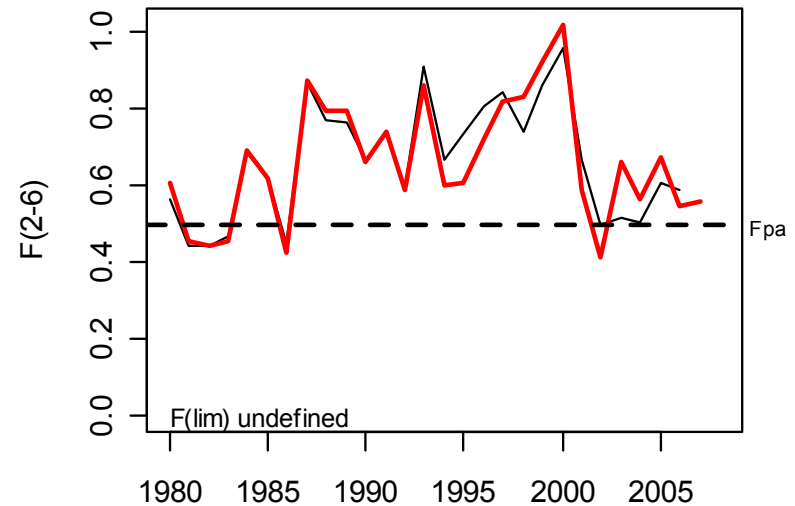


Haddock West of Scotland: trends

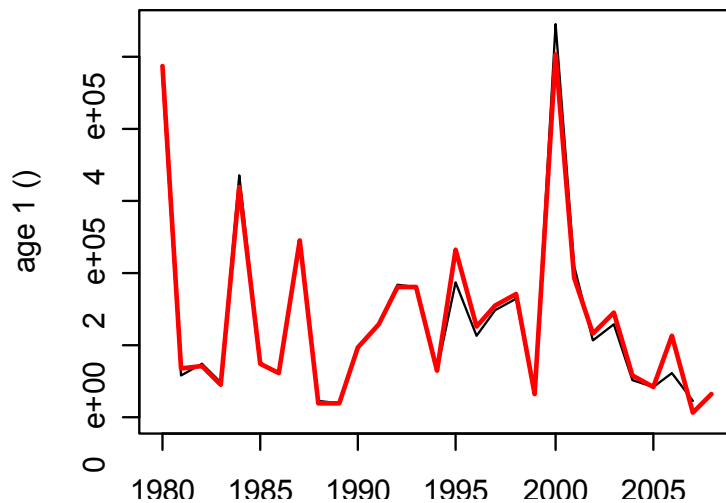
Est. catch



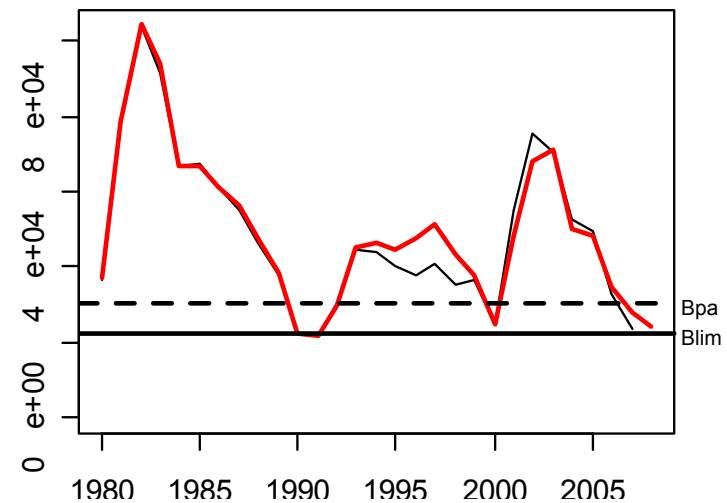
Fishing mortality



Recruitment



SSB





Haddock West of Scotland: advice

■ Last year

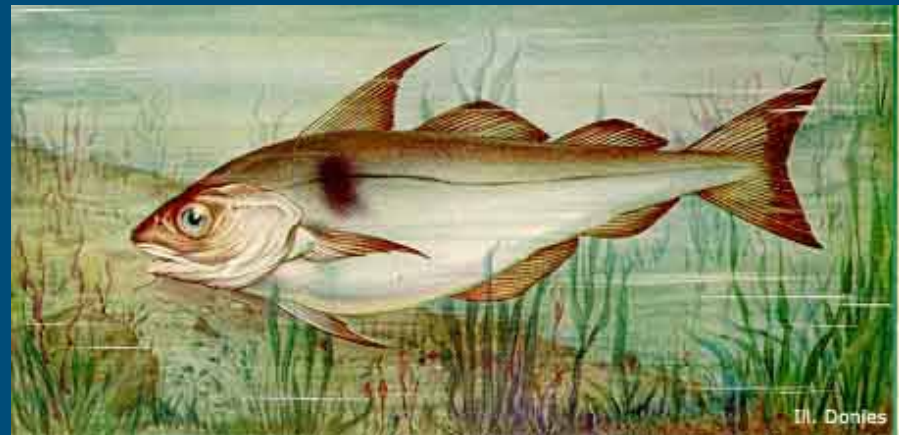
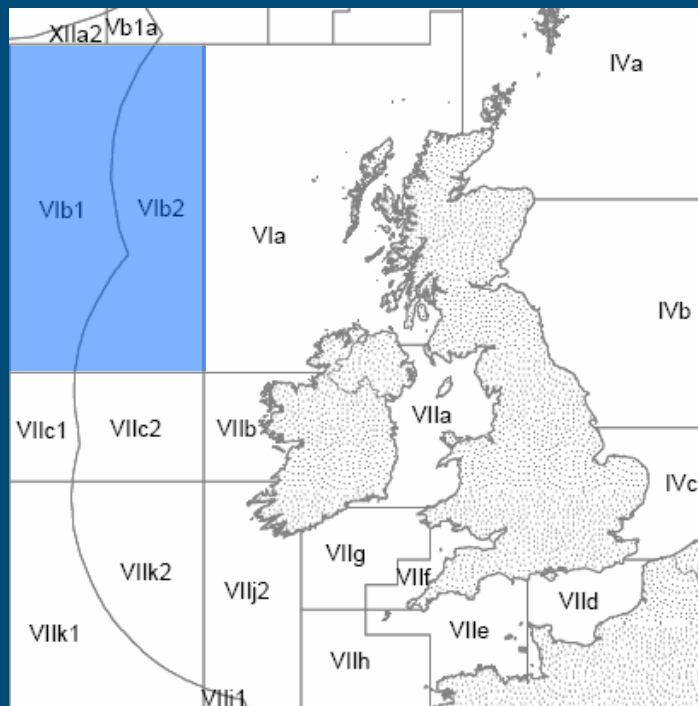
- Reduce F to 0.18 to maintain SSB above B_{pa}
- Total catches $\leq 4\ 200$ t in 2008

■ This year

- Recent poor recruitment, rapidly declining SSB, zero catch in 2009 will not maintain the stock above B_{pa}
- ICES recommends a closure of the fishery in 2009
- Develop recovery plan as a prerequisite to reopening the fishery.



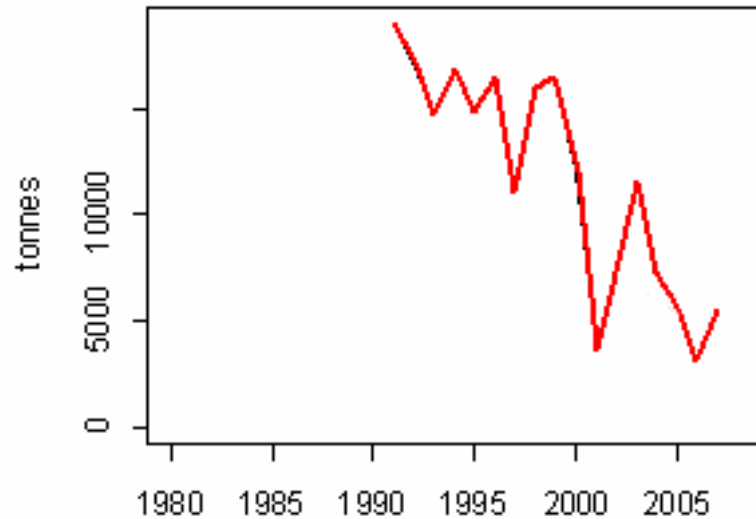
Haddock in Rockall area (VIb)



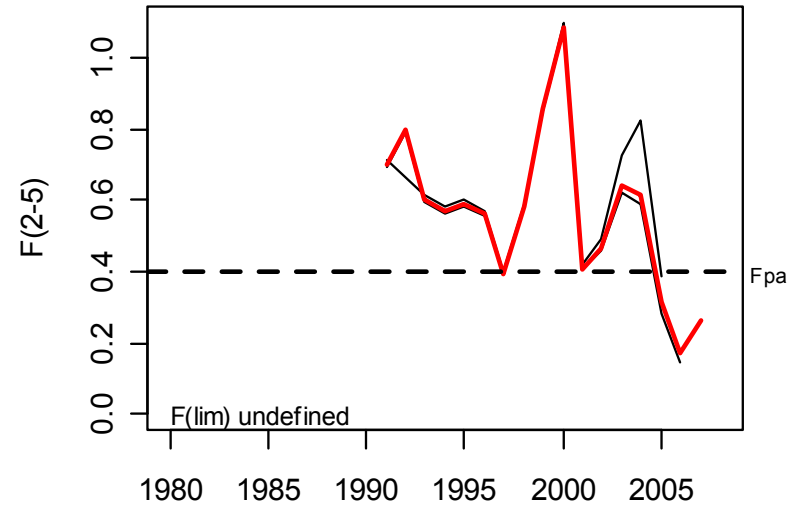


Rockall Haddock: trends

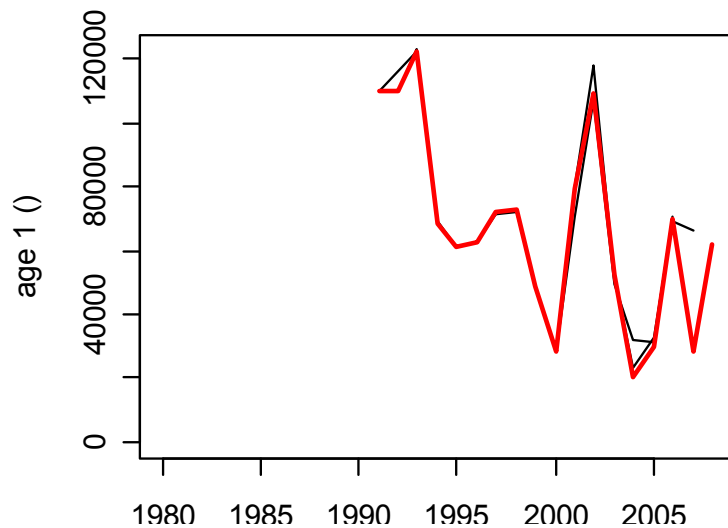
Landings + discards



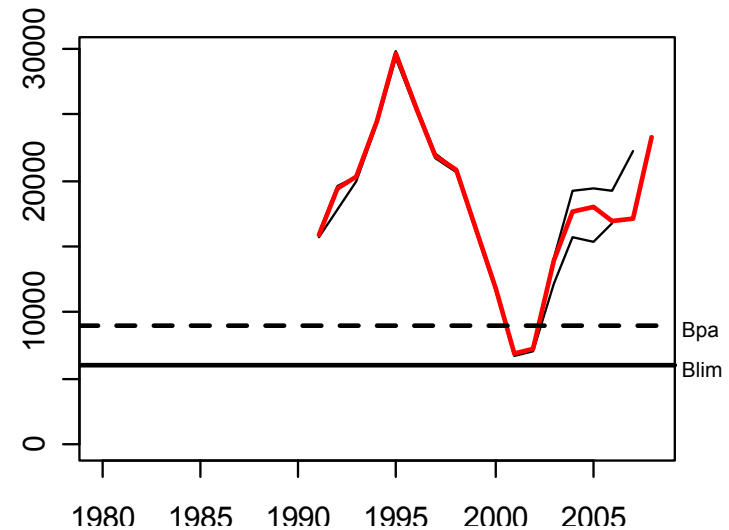
Fishing mortality



Recruitment



SSB





Rockall Haddock: advice

■ Last year

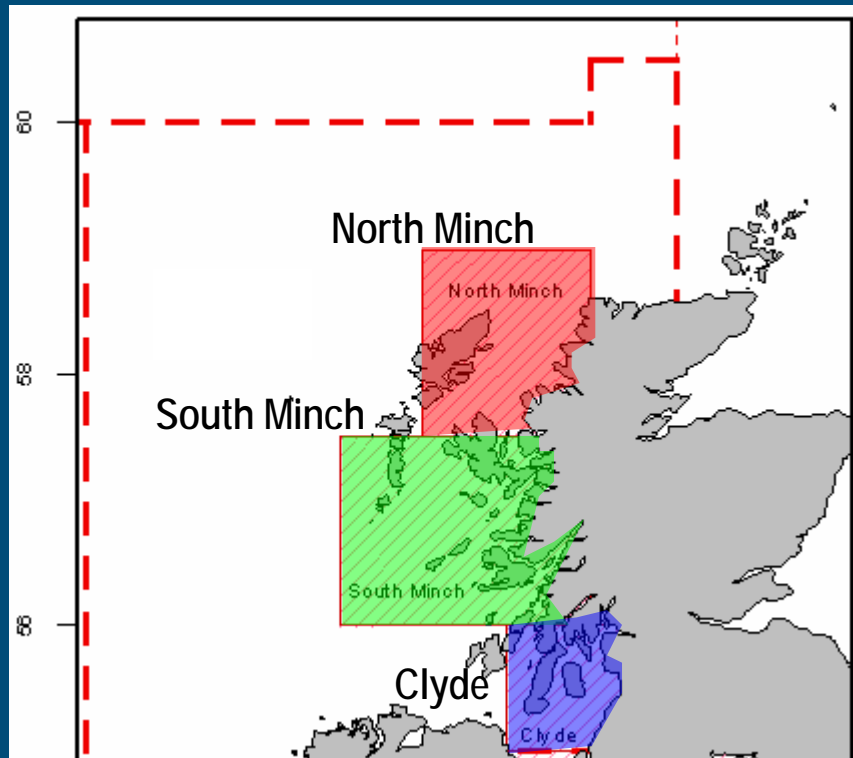
- F at F_{pa} , catches $\leq 10\,640$ t in 2008
 - Note: at $F_{0.1}$: catches $\leq 5\,260$ t. in 2008

■ This year

- Stock that is well above B_{pa}
- Fishing mortality below F_{pa}
- Little gain to the long-term yield by increasing F
- ICES recommends to limit catches to **6490 t** in 2009 and landings to **4330 t**.

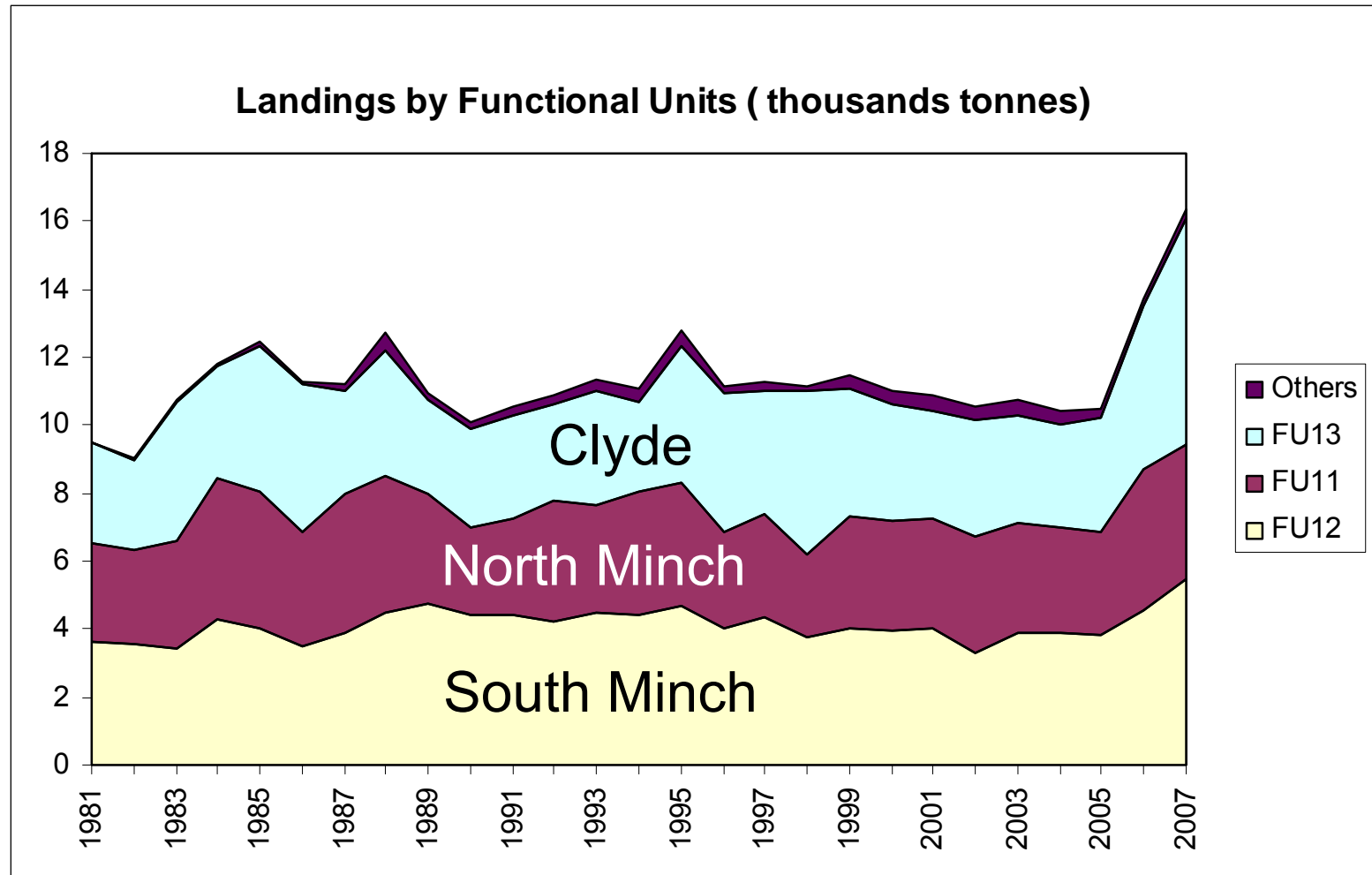


Nephrops West of Scotland





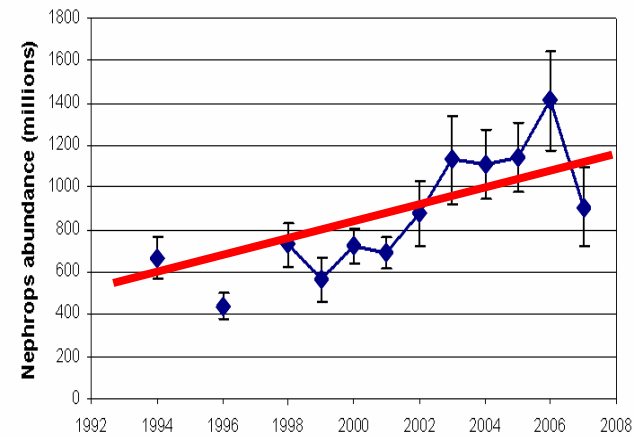
Nephrops West of Scotland: landings



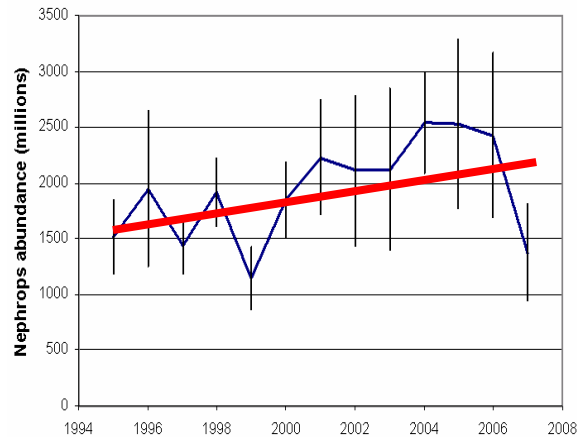


Nephrops West of Scotland: trends

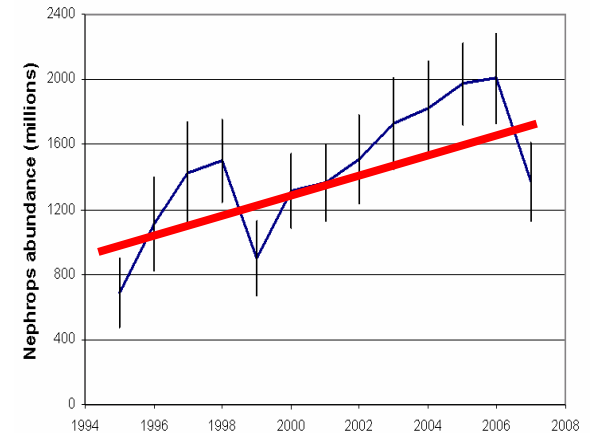
North Minch



South Minch



Clyde





Nephrops West of Scotland: advice

■ Advice in 2006

- No increase in effort should not be allowed to increase relative to the past three years.
- Harvest ratio no more than 15%: corresponds to
 - ≤ 3200 t for North Minch,
 - ≤ 7200 t for the South Minch,
 - ≤ 3800 t for the Firth of Clyde stock.

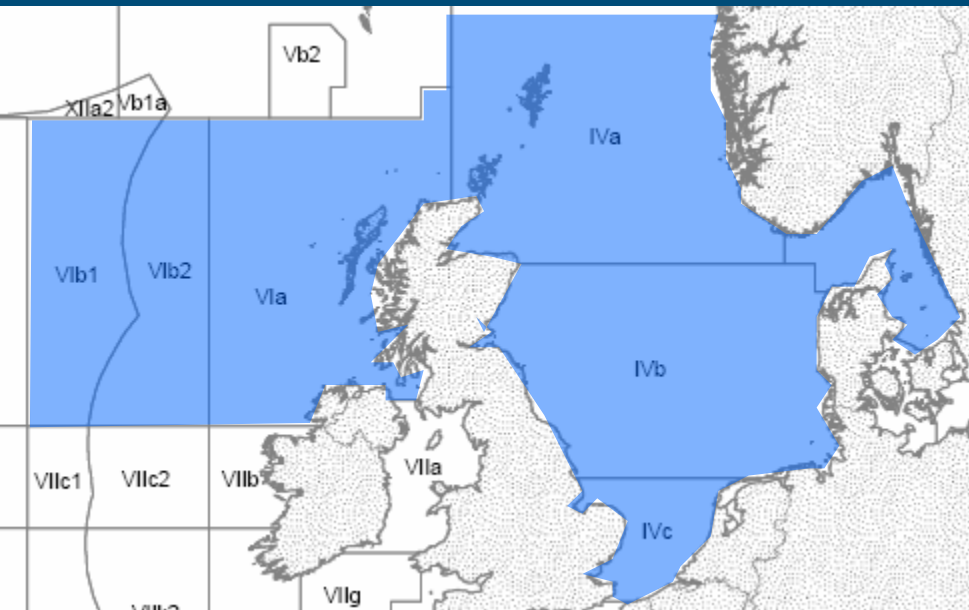
■ New advice

- Current fishery appears sustainable.
- Nephrops fisheries should be not be allowed to increase relative to 2006-2007.
 - \leq **4100 tonnes** for the North Minch stock.
 - \leq **5000 tonnes** for South Minch
 - \leq **5700 tonnes** for Firth of Forth



Saithe

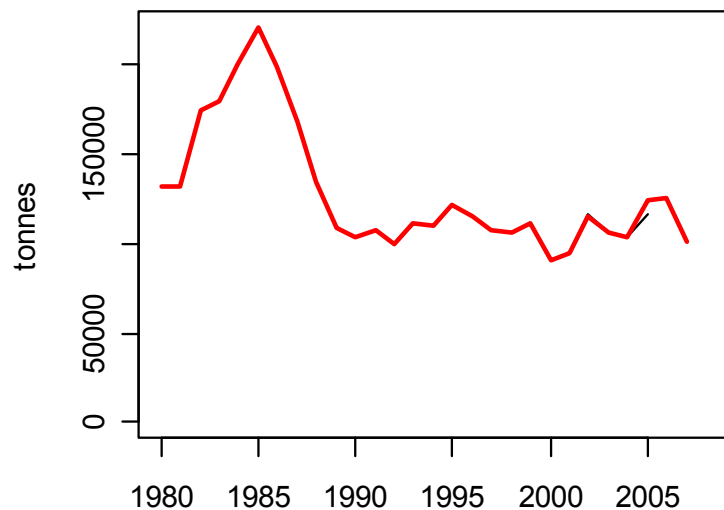
in North Sea, Skagerrak, West of Scotland and Rockall



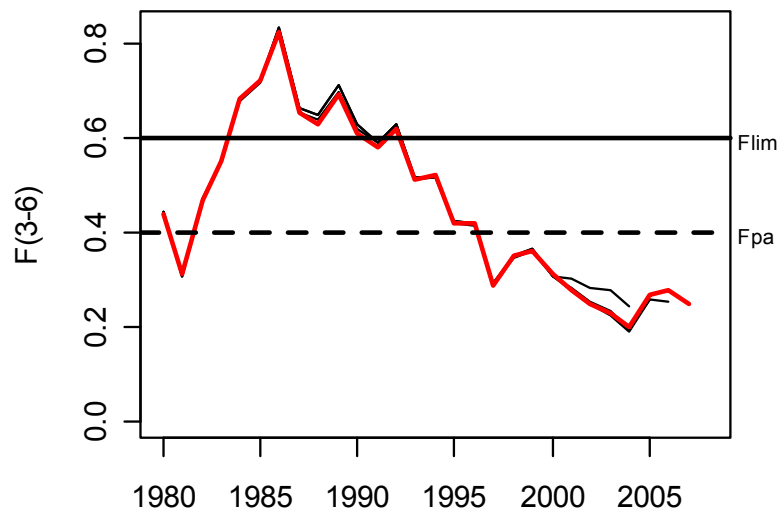


Saithe: trends

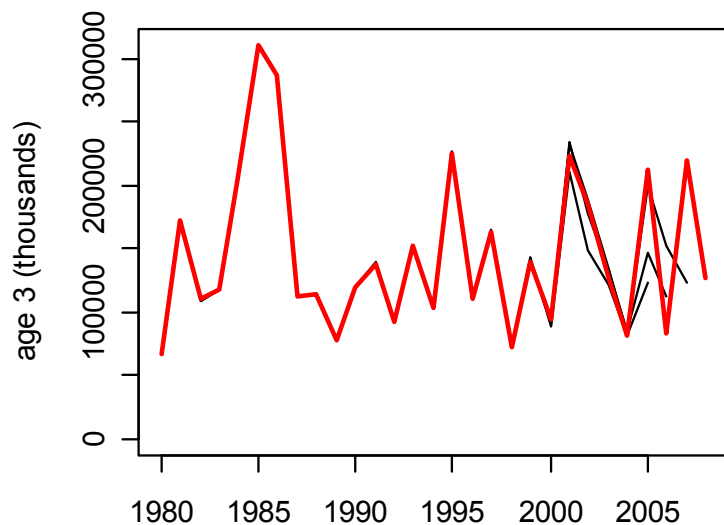
Landings



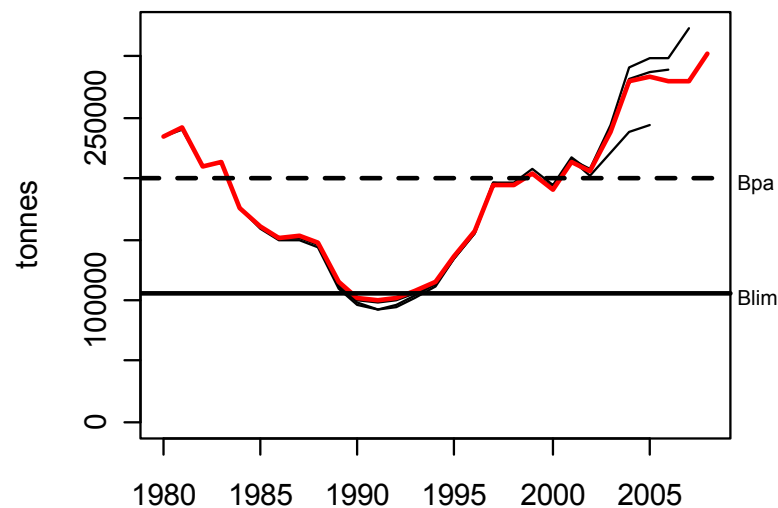
Fishing mortality



Recruitment



SSB





Saithe: advice

■ Last year

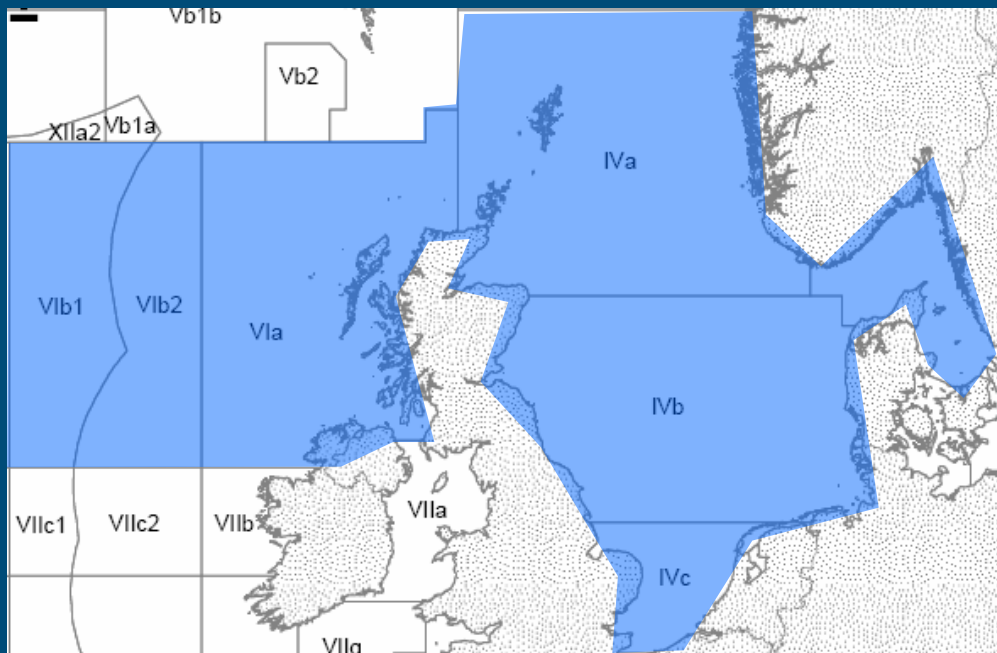
- Target fishing mortality in the management plan is expected to give high long-term gains
- ICES therefore recommends to limit landings in 2008 to 150 000 t.

■ This year

- Agreed management in accordance with Precautionary Approach
- Fish at $F=0.3$: landings 2009=139 000 t.



Anglerfish in IIIa, IV and VI



“No new advice”



Anglerfish in IIIa, IV and VI

- The new data available for this stock do not change the perception of the stock
- Same advice as last year
 - “The effort in fisheries that catch anglerfish should not be allowed to increase
 - fishery must be accompanied by mandatory programmes to collect catch and effort data on both target and bycatch fish.”

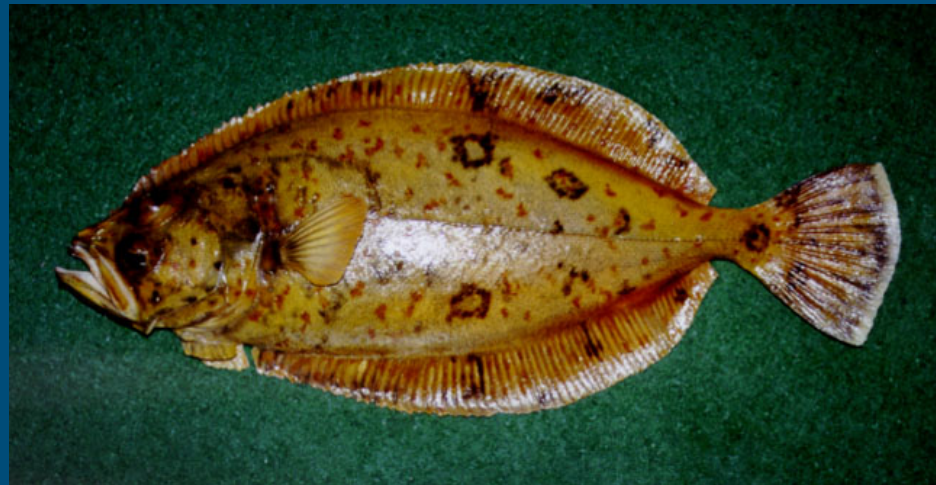
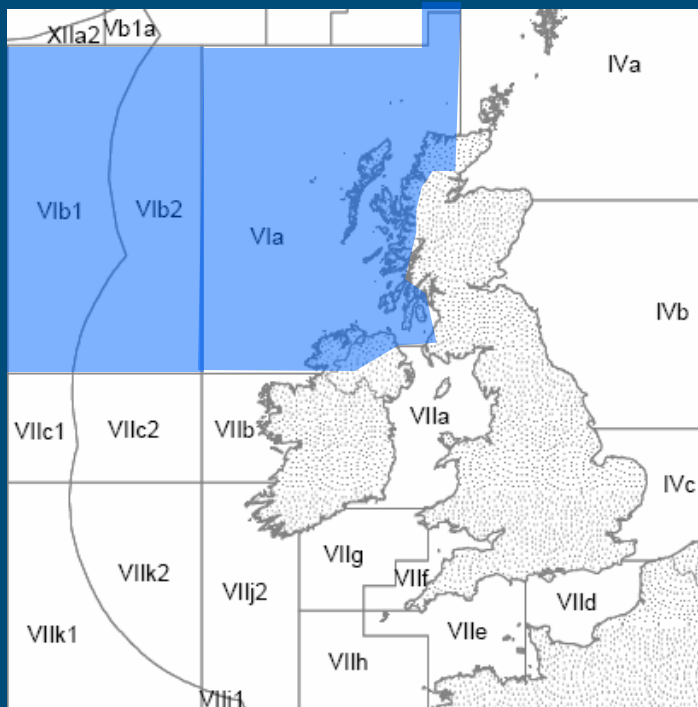


Anglerfish: consideration

- Initiatives for anglerfish:
 - dedicated Scottish and Irish scientific surveys (research vessels and commercial vessels)
 - Scottish tallybook scheme (and personal diaries);
 - increased observer coverage.
- Review of information before 2009 advice



Megrim in VI (west of Scotland and Rockall)



“No new advice”

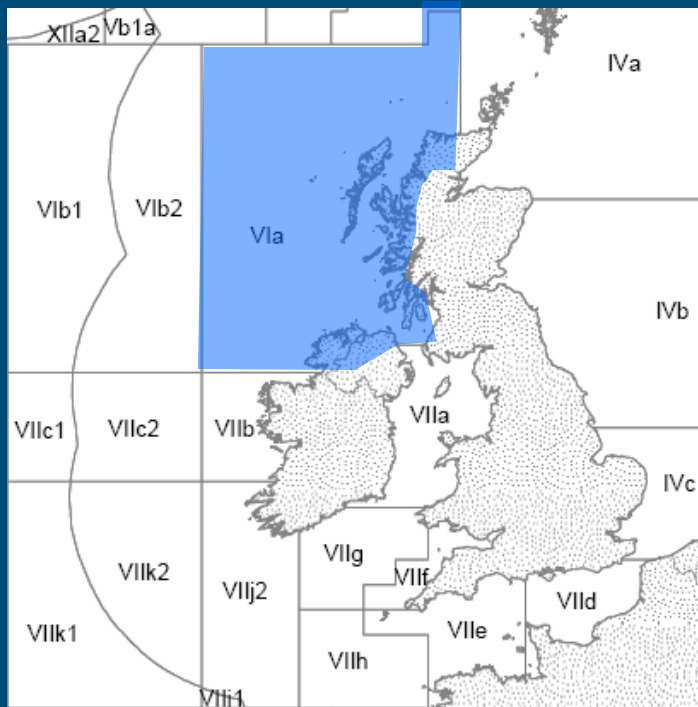


Megrim in VI: advice

- The new landing, cpue and survey data available for this stock do not change the perception of the stock
- Same as the advice as in 2007
 - *“Catches [...] should be based on the recent average (2004–2006), about 1400 t. This includes landings in Division VIa and VIb and unallocated landings in Subarea IV”*



Whiting West of Scotland (VIa North)



“No new advice”



Whiting (West of Scotland)

- New landing and survey data do not change the perception of the stock
- Advice the same as in 2007
 - “Given that SSB is estimated at the lowest observed level and total mortality at the highest level over the time period, catches [...] should be reduced to the lowest possible level.”

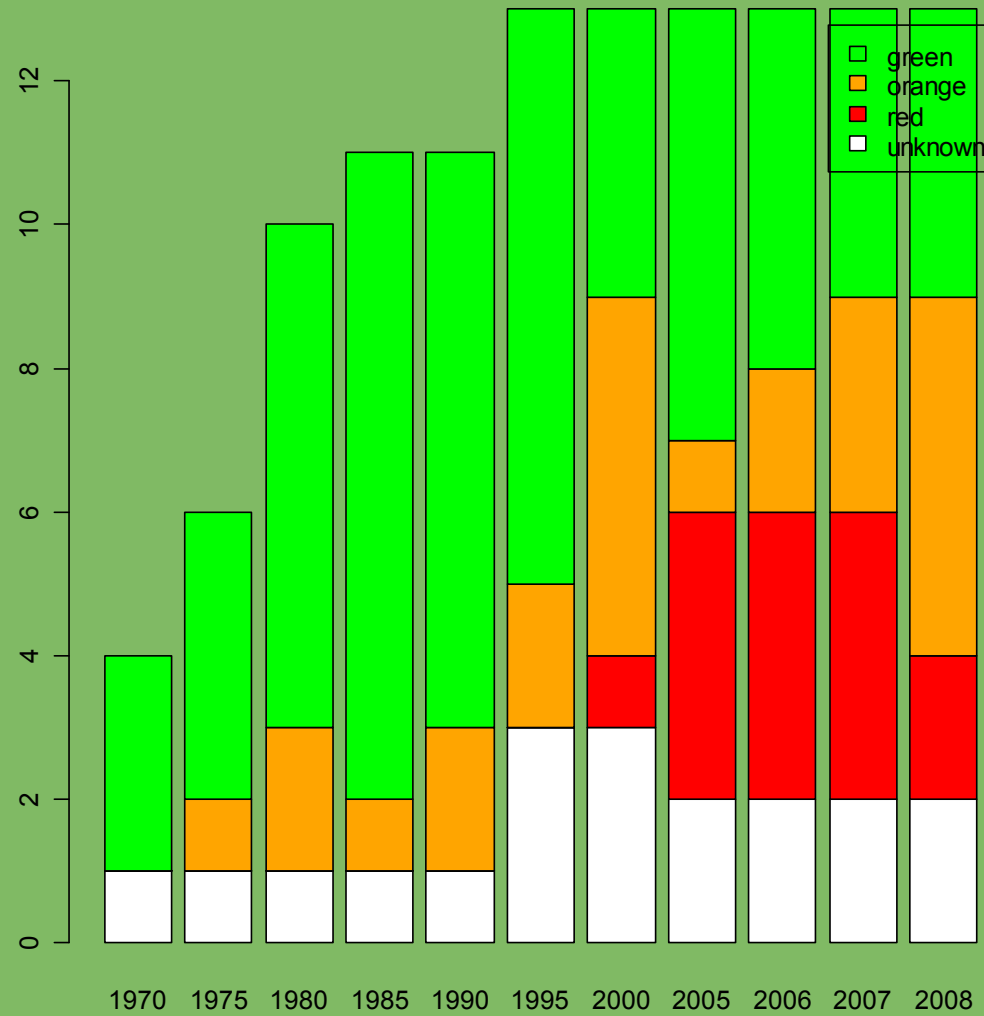


Back to the big picture?





Stock status: similar to last year





New advice on nephrops and Sharks and Rays



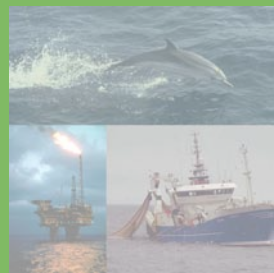


We are changing the advisory process





Still to come: data workshops & integration





ICES and RACs: manage the process of change

