



ICES advice for 2009

North western waters

Presented at: North Western RAC, Madrid, 3-4 July 2008

Martin Pastoors
(vice-chair of ICES Advisory Committee)





Sustainable exploitation is the key to
fisheries management





You are looking for relevant
information on sustainable exploitation



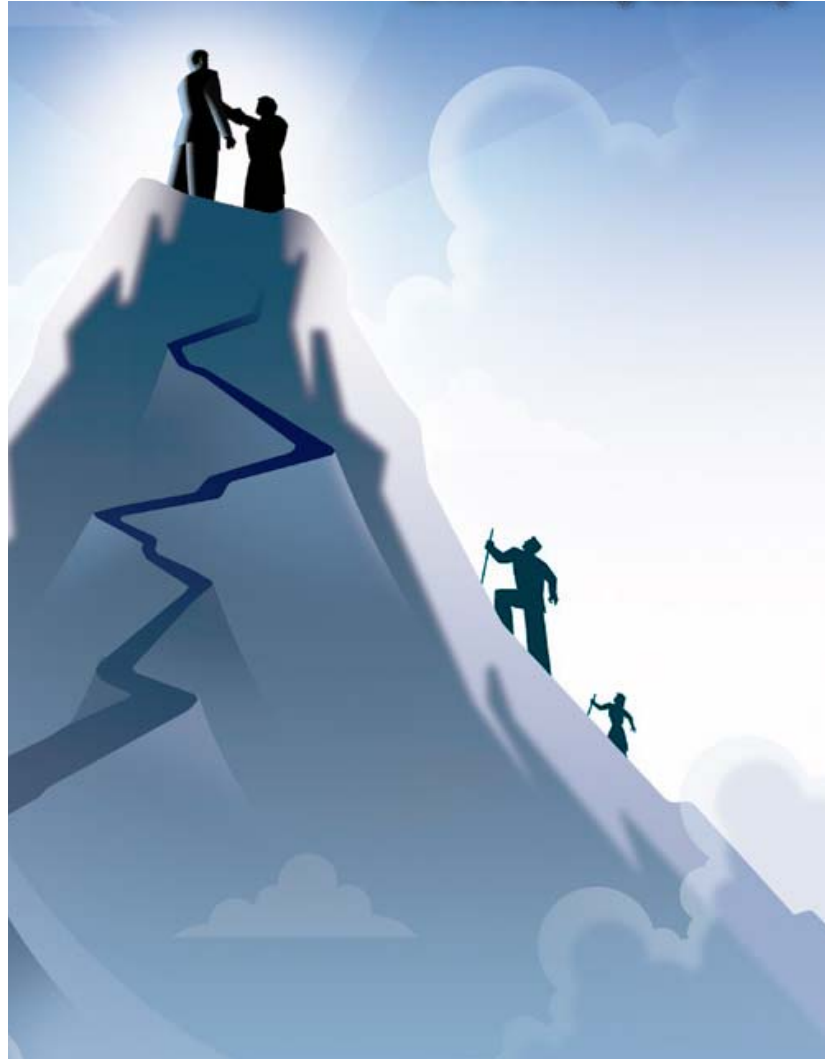


ICES has released new information on the status of ecosystems and fish





You want to be **on top**
of the new information





Review the basis and the content of the new information



How?



Big picture?



My stock?

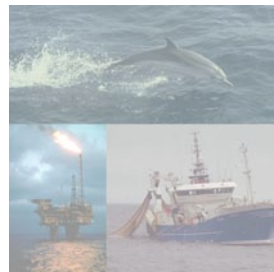
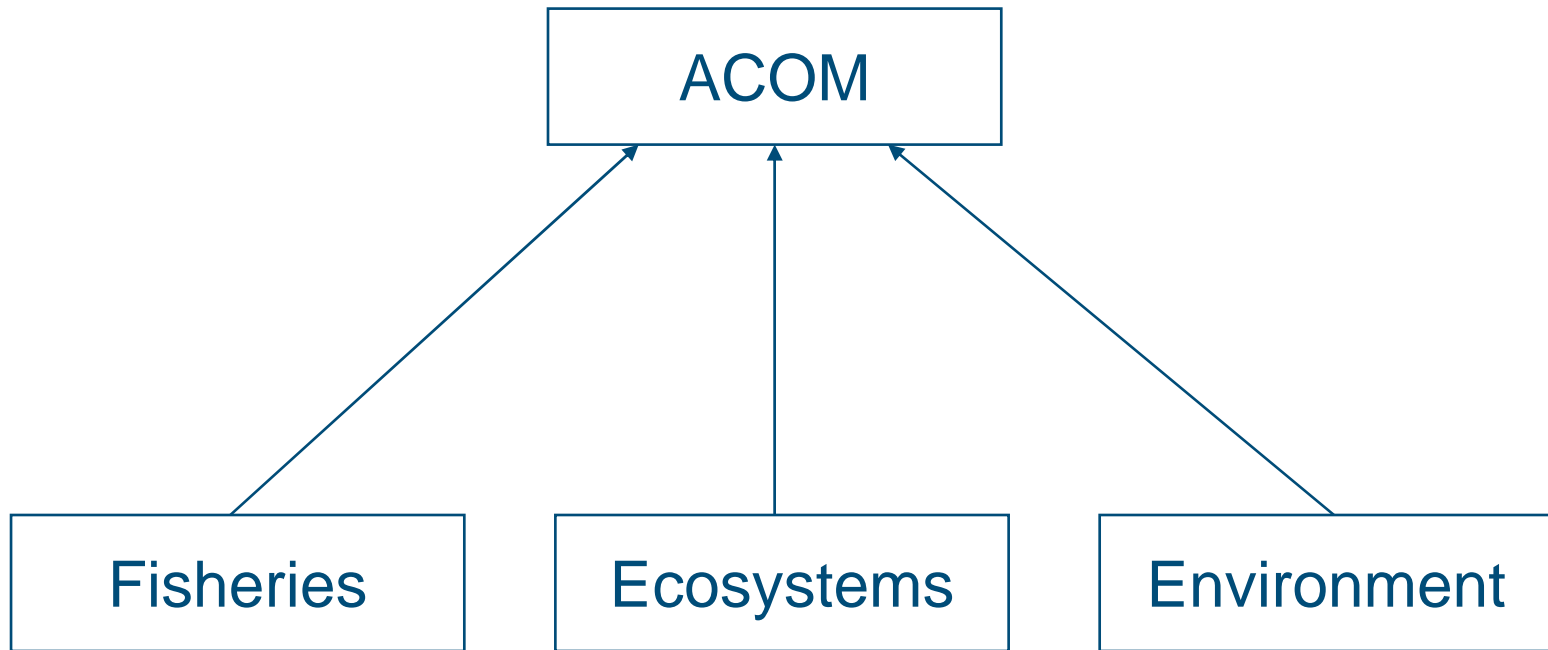


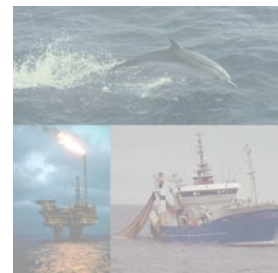
1. How did we do it?





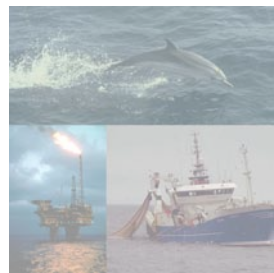
Changed to one integrated advice





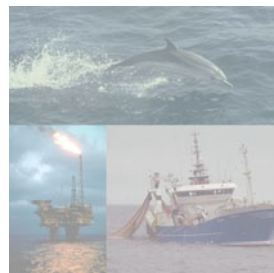


More input from expert groups





Still to come: data workshops





Still to come: fisheries & ecosystem focus

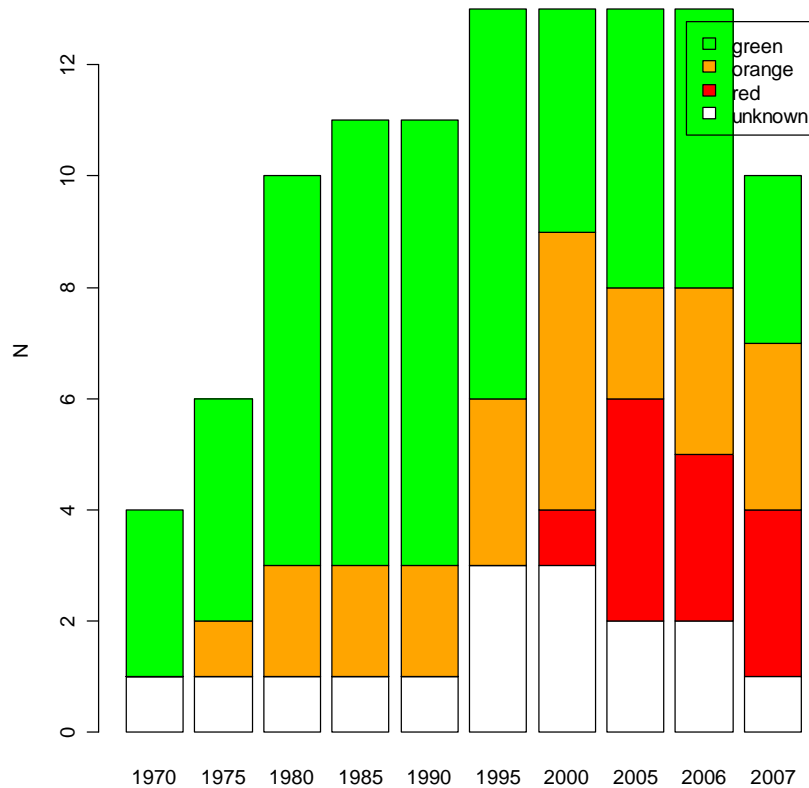


2. The big picture?

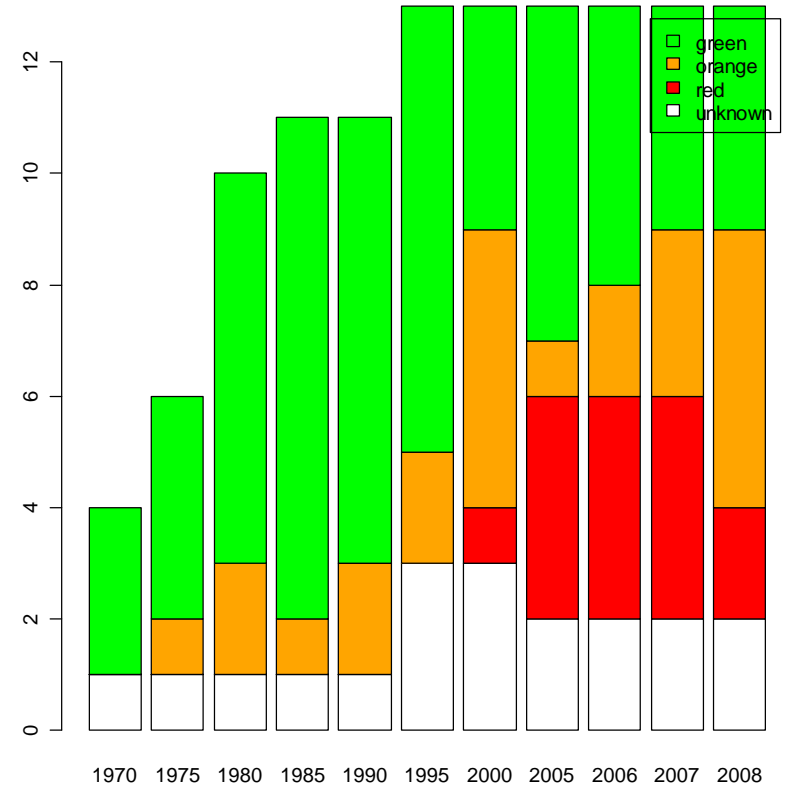




Stock status largely similar to last year



2007



2008

Number of stocks in Celtic Seas and West of Scotland relative to biomass reference points





“No new advice”

ple-echw	Plaice in Division VIIe (Western Channel)
sol-echw	Sole in Division VIIe (Western Channel)
spr-ech	Sprat in Divisions VIId,e
cod-iris	Cod in Division VIIa (Irish Sea)
had-iris	Haddock in Division VIIa (Irish Sea)
her-nirs	Irish Sea herring (Division VIIa)
nep-7a	Nephrops in Division VIIa North of 53°N (Management Area)
ple-iris	Plaice in Division VIIa (Irish Sea)
sol-iris	Sole in Division VIIa (Irish Sea)
whg-iris	Whiting in Division VIIa (Irish Sea)
cod-7e-k	Cod in Divisions VIIe-k
her-irls	Celtic Sea and Division VIIj herring
nep-7fgh	Nephrops in Divisions VIIfgh excl. 31E1 32E1-2 + VIIa, Southern
ple-celt	Celtic Sea plaice (Divisions VIIf and g)
sol-celt	Sole in Divisions VIIf and g (Celtic Sea)
ang-7bab	Anglerfish (Budegassa & Piscatorius) in Divisions VIIb-k a
had-7b-k	Haddock in Divisions VIIb-k
ple-7h-k	Plaice in the Southwest of Ireland (Areas VIIh and VIIk)
sol-7h-k	Sole in the Southwest of Ireland (Areas VIIh i k)





Nephrops advice: stocks appear stable



Sharks and Rays advice: reason for concern

Species	Area	State of stock	Advice
Common skate	VI	Depleted	<i>No target fisheries</i>
	VII	Depleted	<i>No target fisheries</i>
Thornback ray	VIa	Stable/increasing	<i>Status quo catch</i>
	VIIa,f,g		
Spotted ray	VIa	Stable/increasing	<i>Status quo catch</i>
	VIIa,f,g		
Cuckoo ray	VIa	Stable/increasing	<i>Status quo catch</i>
	VII	Uncertain	<i>No advice</i>
Blonde ray	VIa, VIIa and VIIf	Uncertain	<i>No advice</i>
Undulate ray	VIIj and VIIde	Uncertain (but with cause for concern)	<i>No target fisheries</i>
Smalleyed ray	VIIIf	Stable/increasing	<i>Status quo catch</i>
Sandy ray	VI	Uncertain	<i>No advice</i>
	VIIb,c,h-k	Stable/increasing	<i>No advice</i>
Shagreen ray	VII	Uncertain	<i>No advice</i>
White skate	VII	Severely depleted	<i>No fisheries</i>
Lesser-spotted dogfish	VIa and VII	Stable/increasing	<i>Status quo catch</i>
Greater-spotted dogfish	VII	Locally stable and increasing in VIIa	<i>Status quo catch</i>
Smooth hounds	VII	Stable/Increasing	<i>Status quo catch</i>
Angel shark	VII	Severely depleted	<i>No fisheries</i>



3. What happened
to my stock?

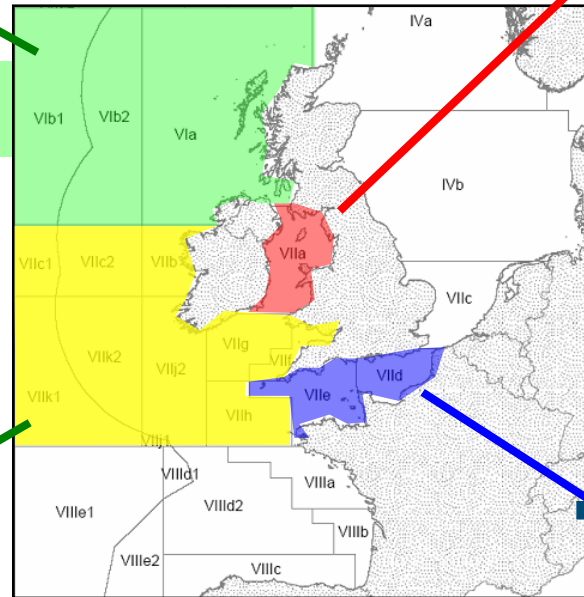




- WG 1- West of Scotland

- Nephrops
- Saithe
- Megrim (*)

- Anglerfish (VIIb-k, VIIIab) (*)
- Plaice (Celtic Sea, VIIIh-k (*), VIIbc (*)
- Northern hake



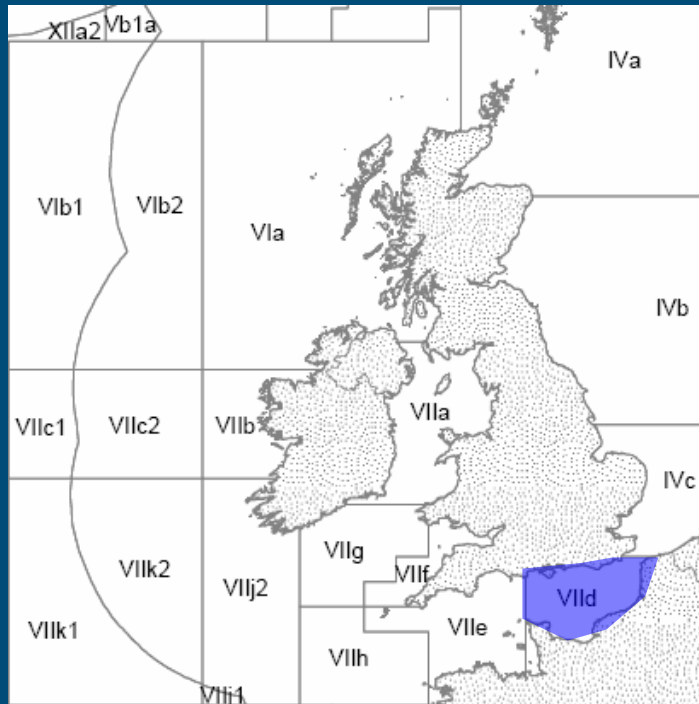
- Nephrops
- Sole
- Whiting (*)

- Sole in VIIe
- Cod in IV, VIId and Skagerrak

(* No new advice in 2008)



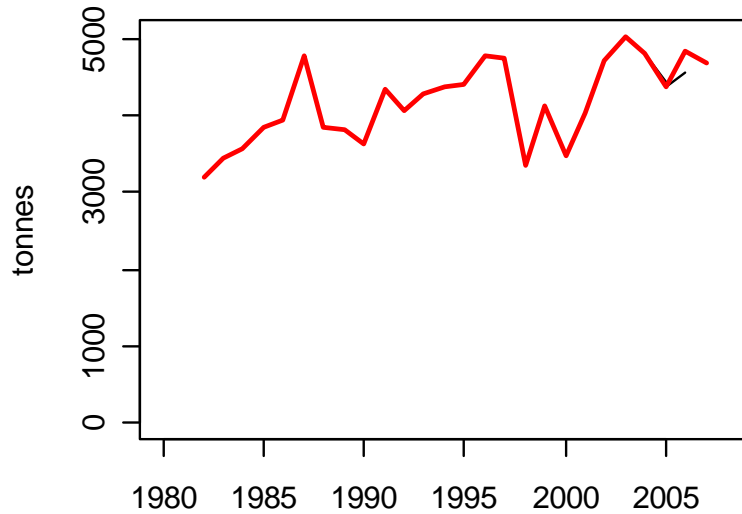
Sole in the Eastern Channel (VIId)



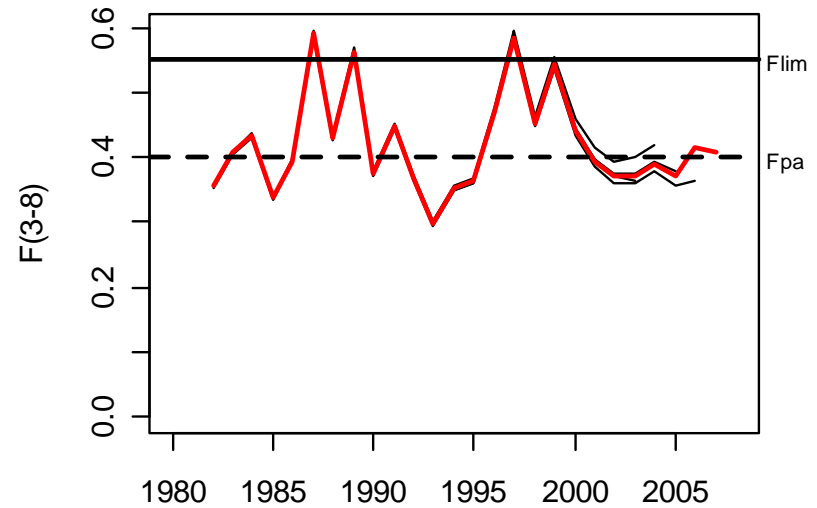


Sole in VIId: trends

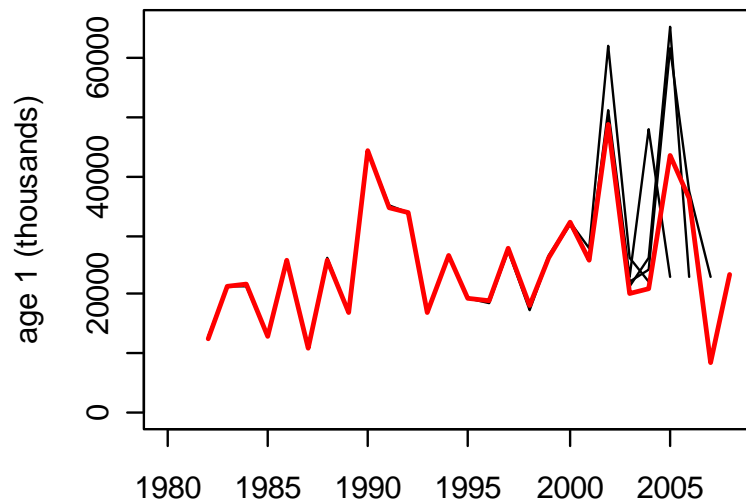
Landings



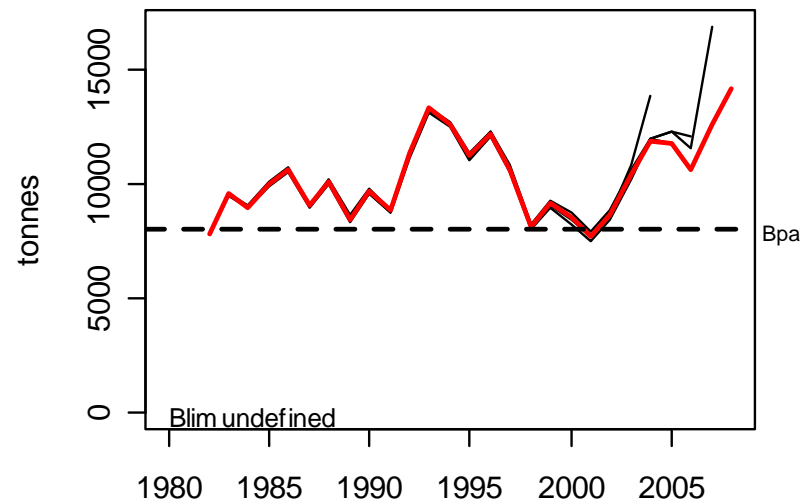
Fishing mortality



Recruitment



SSB





Sole in VIId: advice

■ Last year

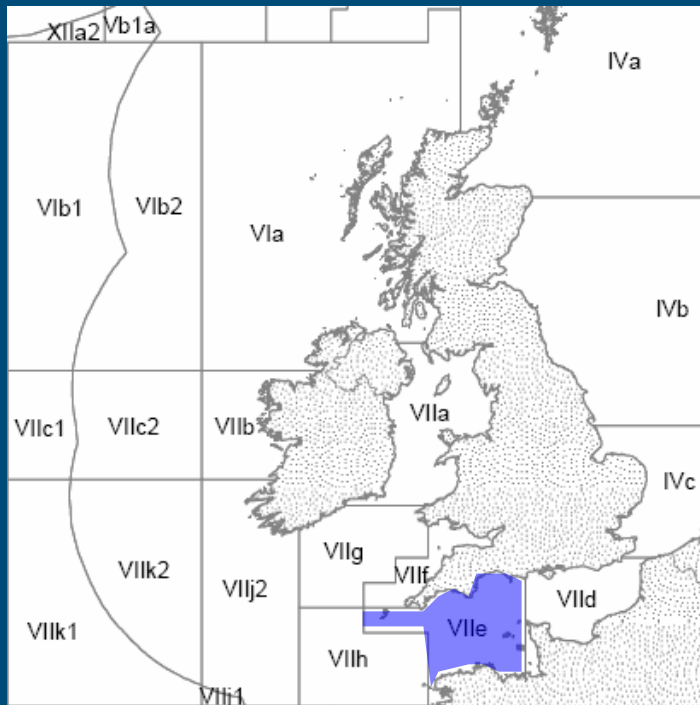
- Fish according to F_{pa} ; landings of 6 590 t.

■ This year

- Fish according to F_{pa} ; landings of 4 380 t.
 - ~ 34% reduction in TAC



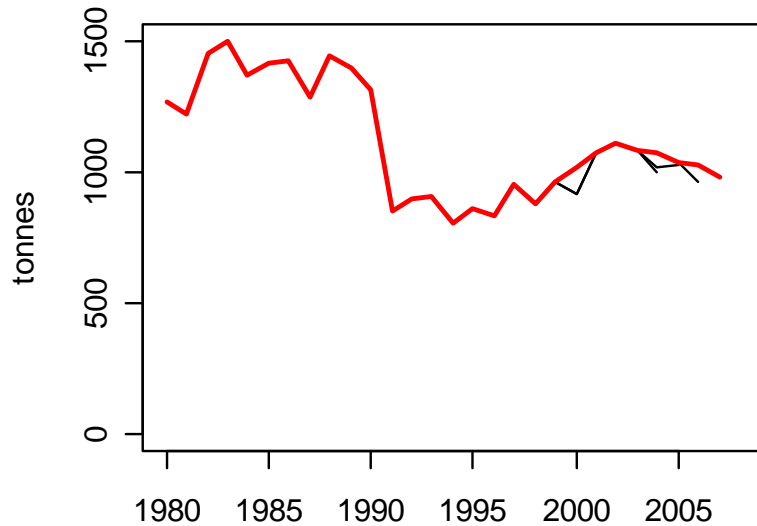
Western Channel Sole (VIIe)



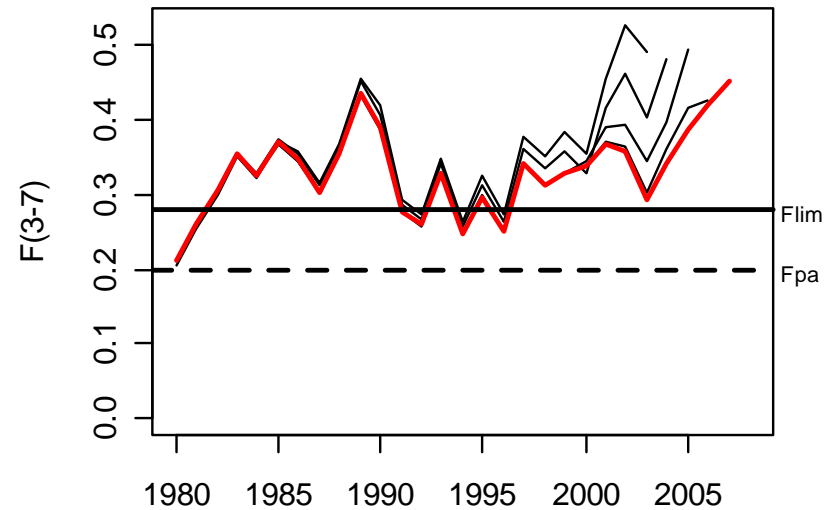


Western Channel Sole: trends

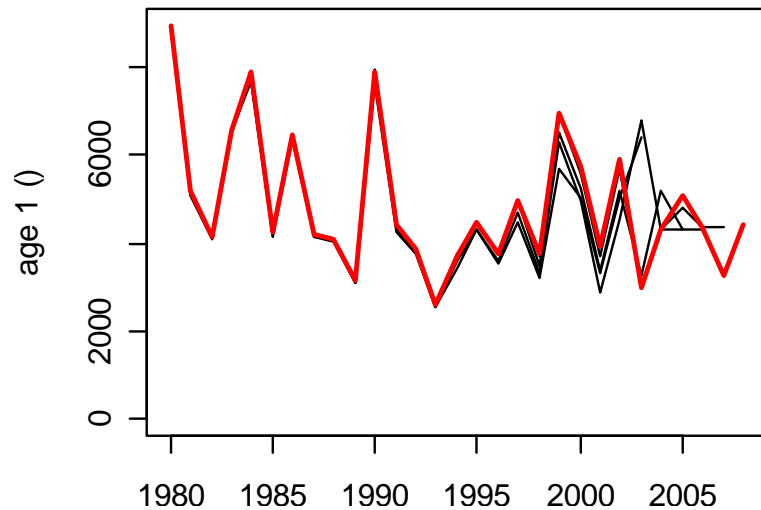
Landings



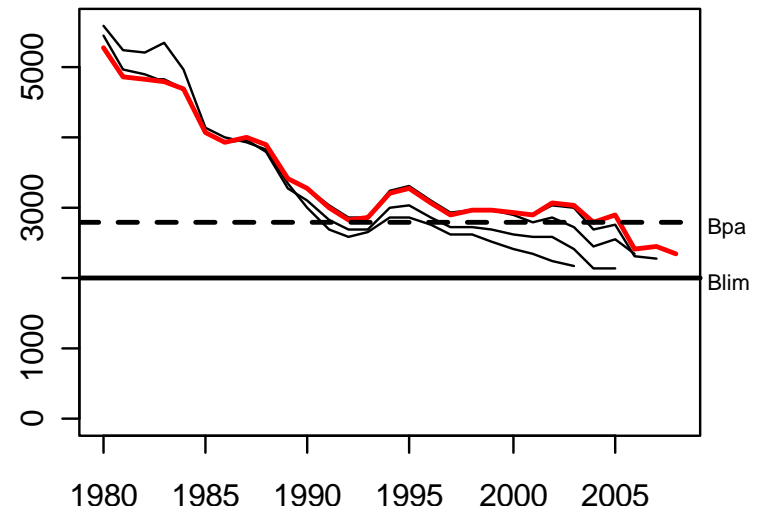
Fishing mortality



Recruitment



SSB





Western Channel Sole: advice

■ Last year

- Bring SSB above B_{pa} : landings < 260 t
- Management plan: 765 t. (15% lower TAC)
 - SSB 2009: 2 300 t. (below B_{pa})
 - Not evaluated by ICES

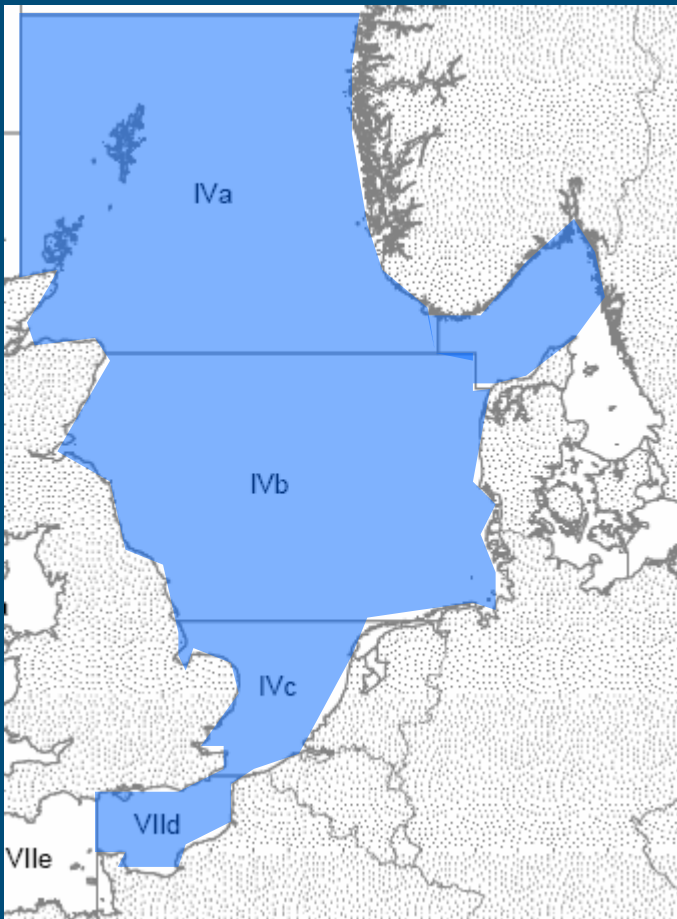
■ This year

- Bring SSB above B_{pa} : landings < 300 t
- Management plan: 650 t.
 - 20% lower F ; 15% lower TAC
 - Not (yet) evaluated by ICES



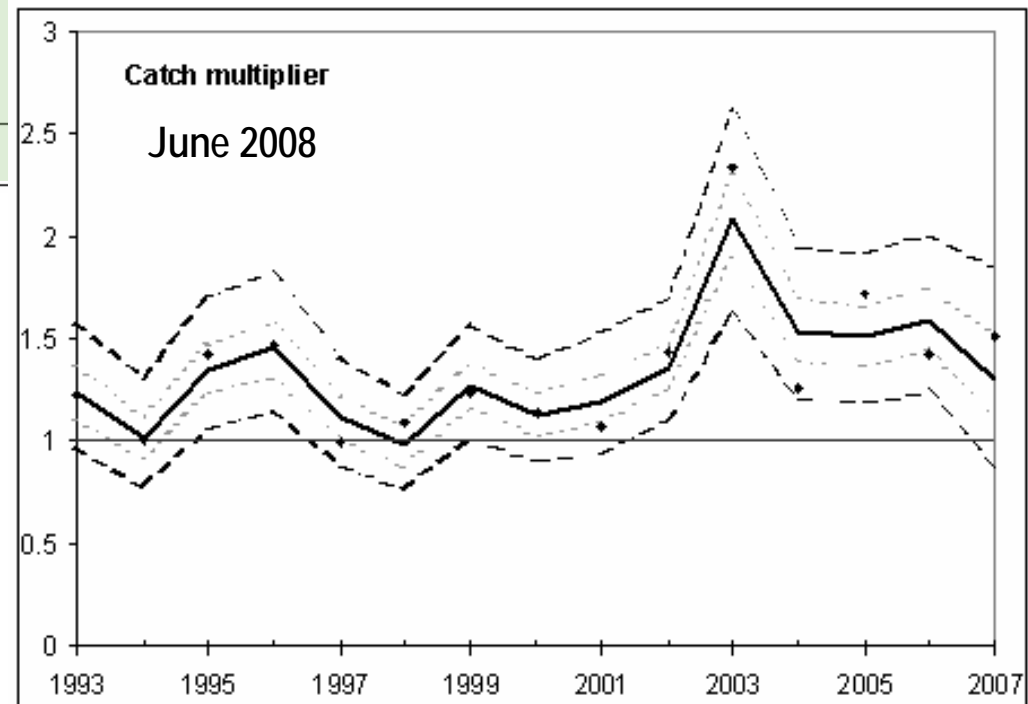
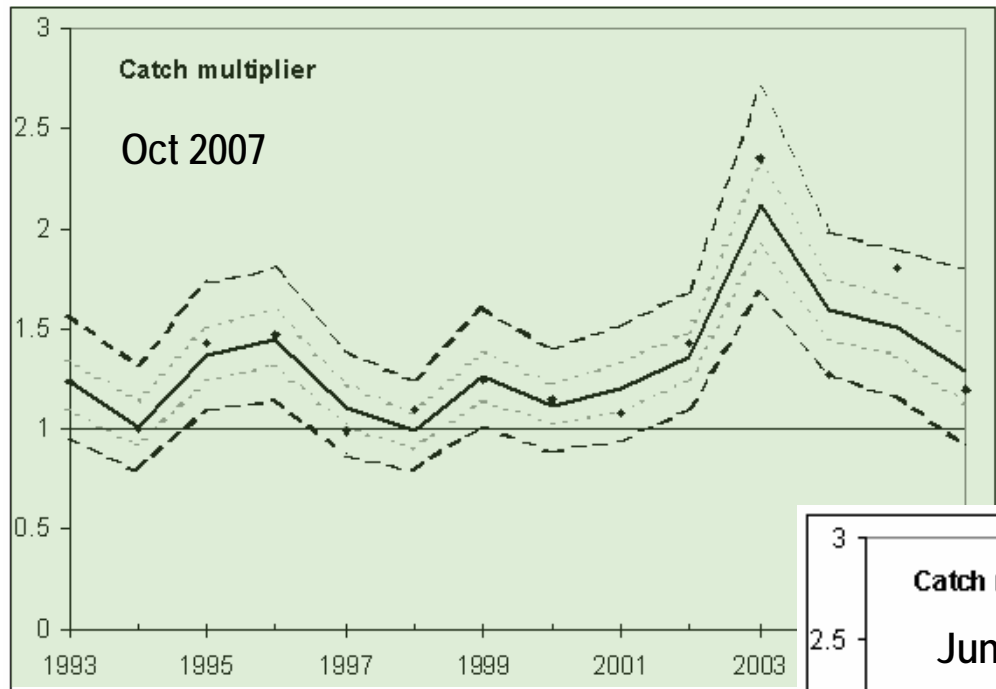
Cod

North Sea, **eastern Channel** and Skagerrak





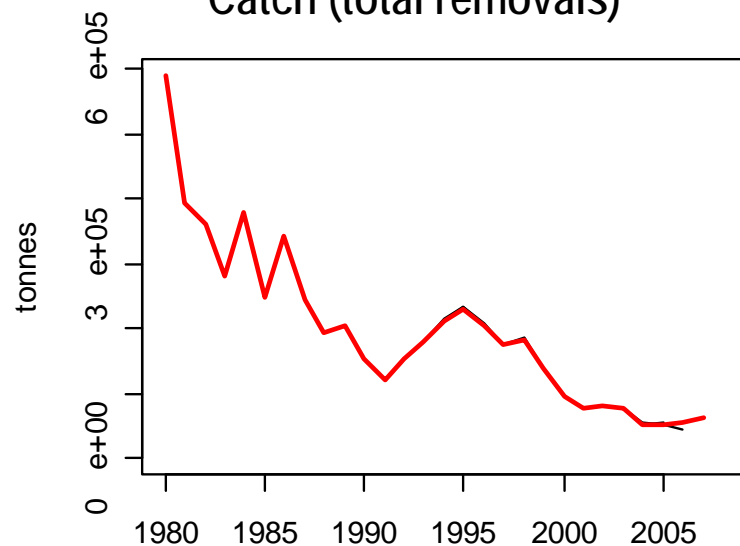
Cod: unaccounted removals



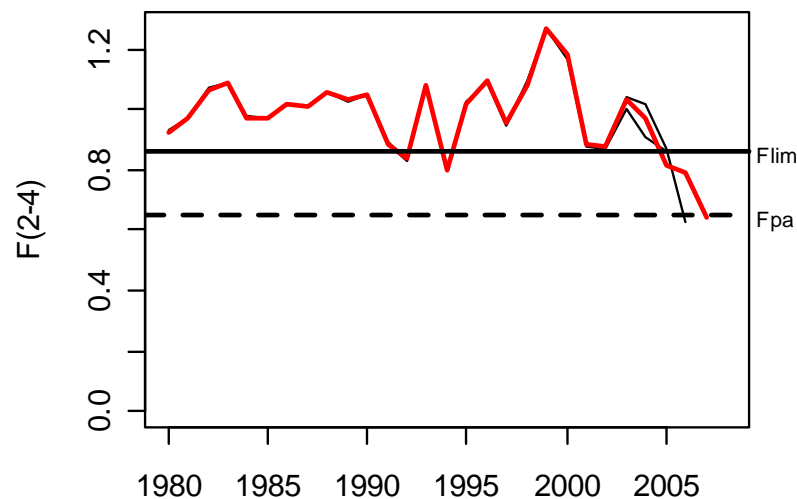


Cod

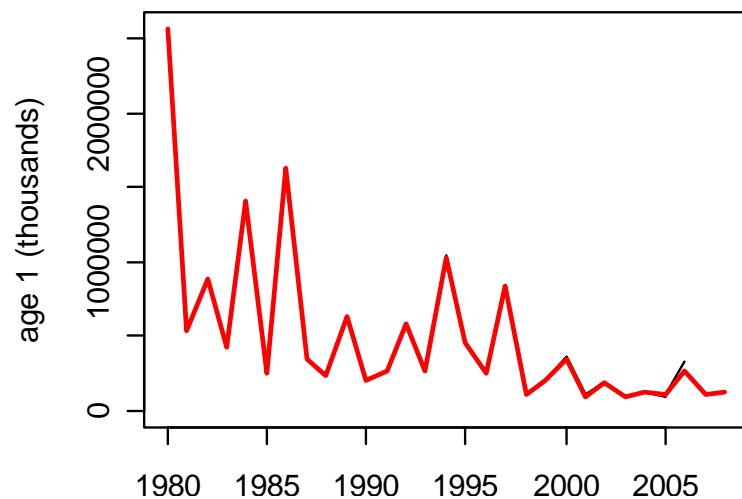
Catch (total removals)



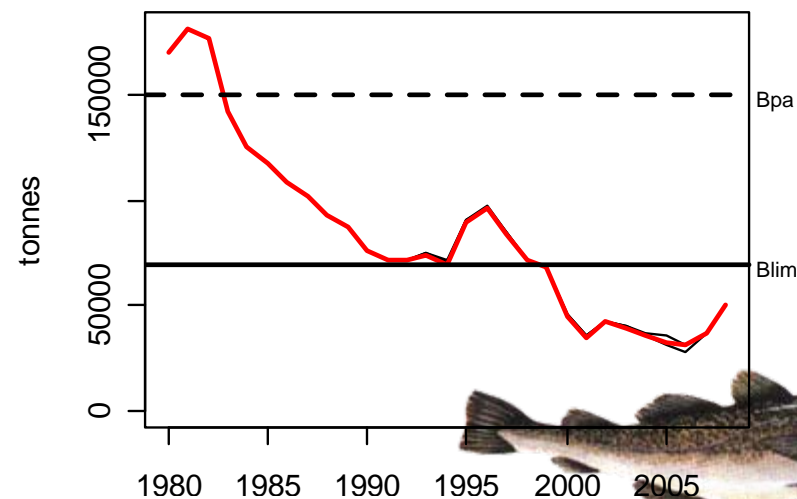
Fishing mortality



Recruitment



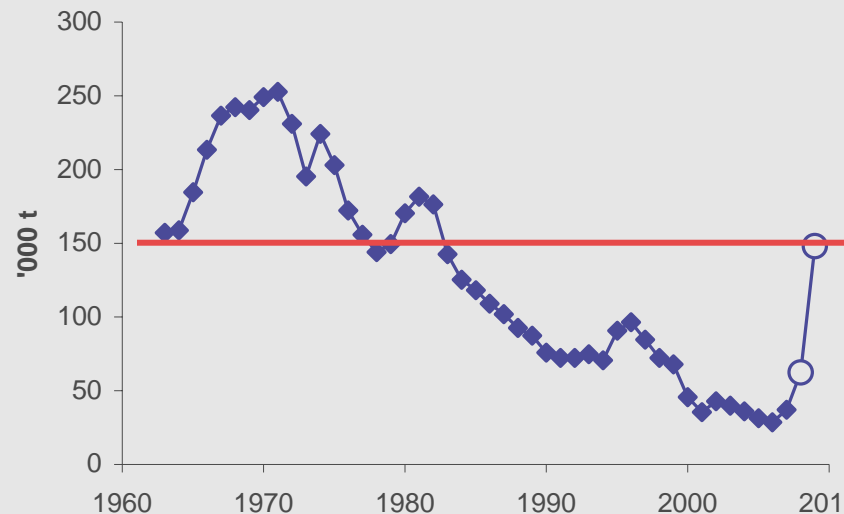
SSB





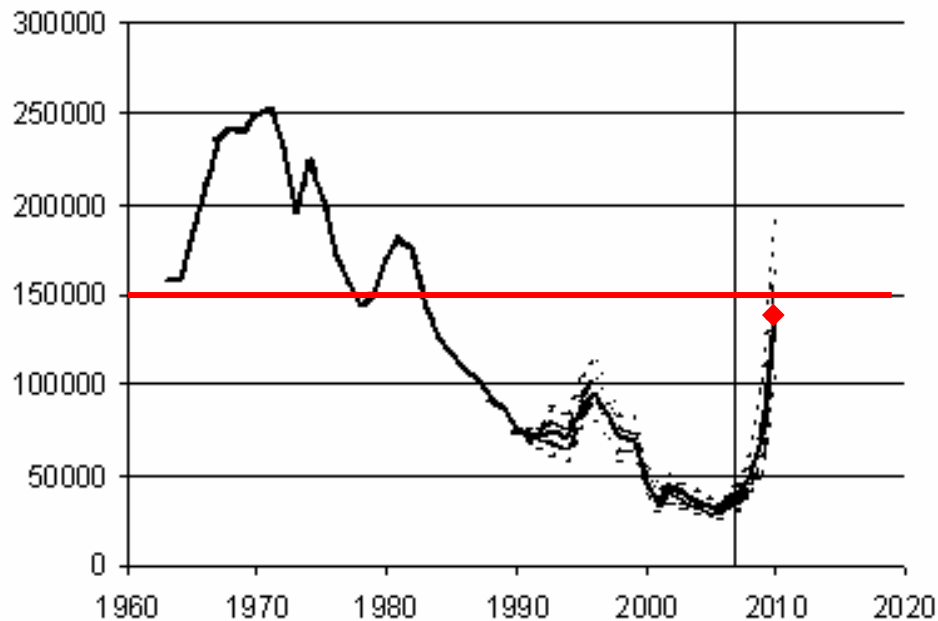
Cod: outlook

SSB
Oct 2008



14% reduced F in 2007. $F=0.13$ after

SSB





Cod: advice

■ Last year (October)

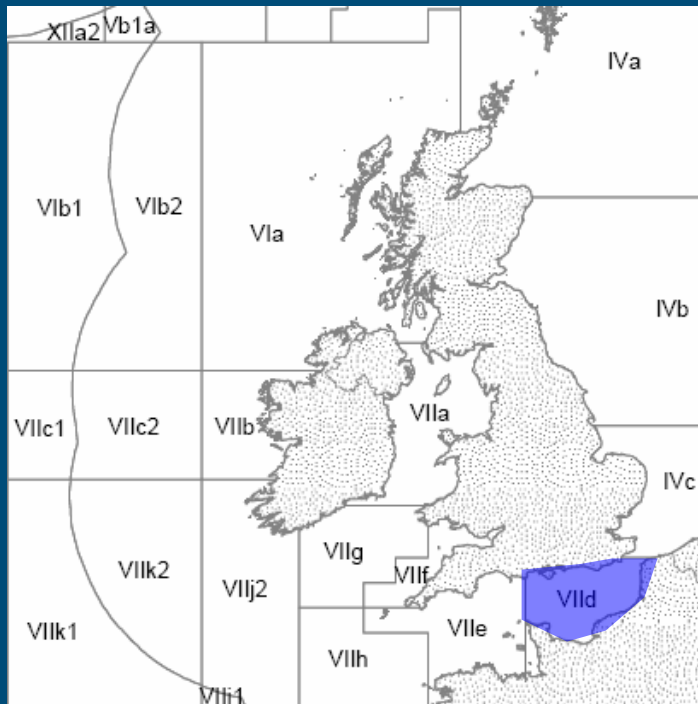
- ... stock can be rebuilt to **Bpa** with a fishing mortality less than 0.13
- Corresponds to **total removals** (landings, discards, and unaccounted removals) of 22 000 t.

■ This year

- ... stock cannot be rebuilt to Bpa at the start of 2010 even with a zero catch.
- ICES recommends that fisheries for cod be closed until an initial recovery of the cod SSB has been proven



Plaice in the Eastern Channel (VIId)



“No new advice”

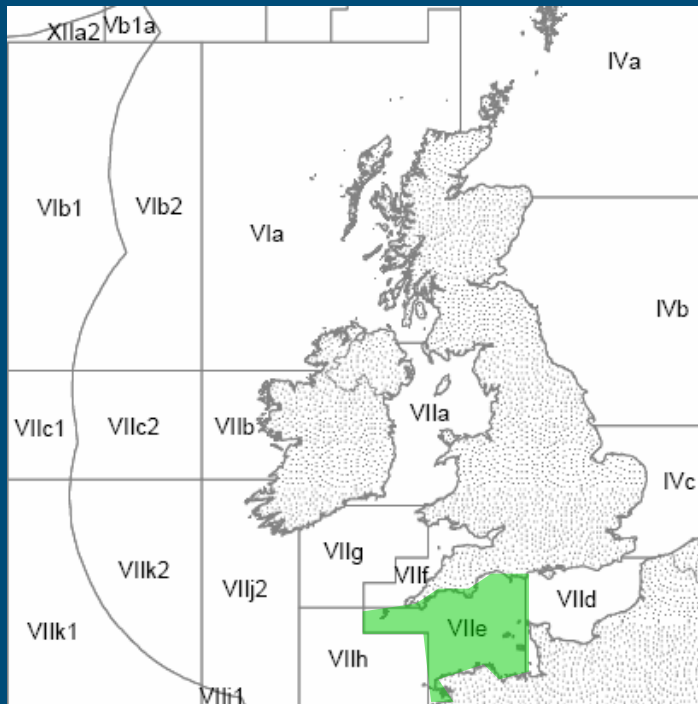


Plaice in the Eastern Channel

- New landings, cpue, and survey data do not change stock perception
- Advice same as in 2007
 - “...landings [...] do not increase above the average of landings from the last three years (2004–2006), corresponding to 3500 t.”



Plaice in the Western Channel (VIIe)



“No new advice”



Plaice in Vlle: advice

- New assessment does not change stock perception
- Advice same as in 2007
 - “Given the low stock size, recent poor recruitment, high fishing mortality, the uncertainty in the assessment, and the inability to reliably forecast catch, ICES recommends a **substantial reduction in catch** until the estimate of SSB is above Bpa or other strong evidence of rebuilding is observed.”

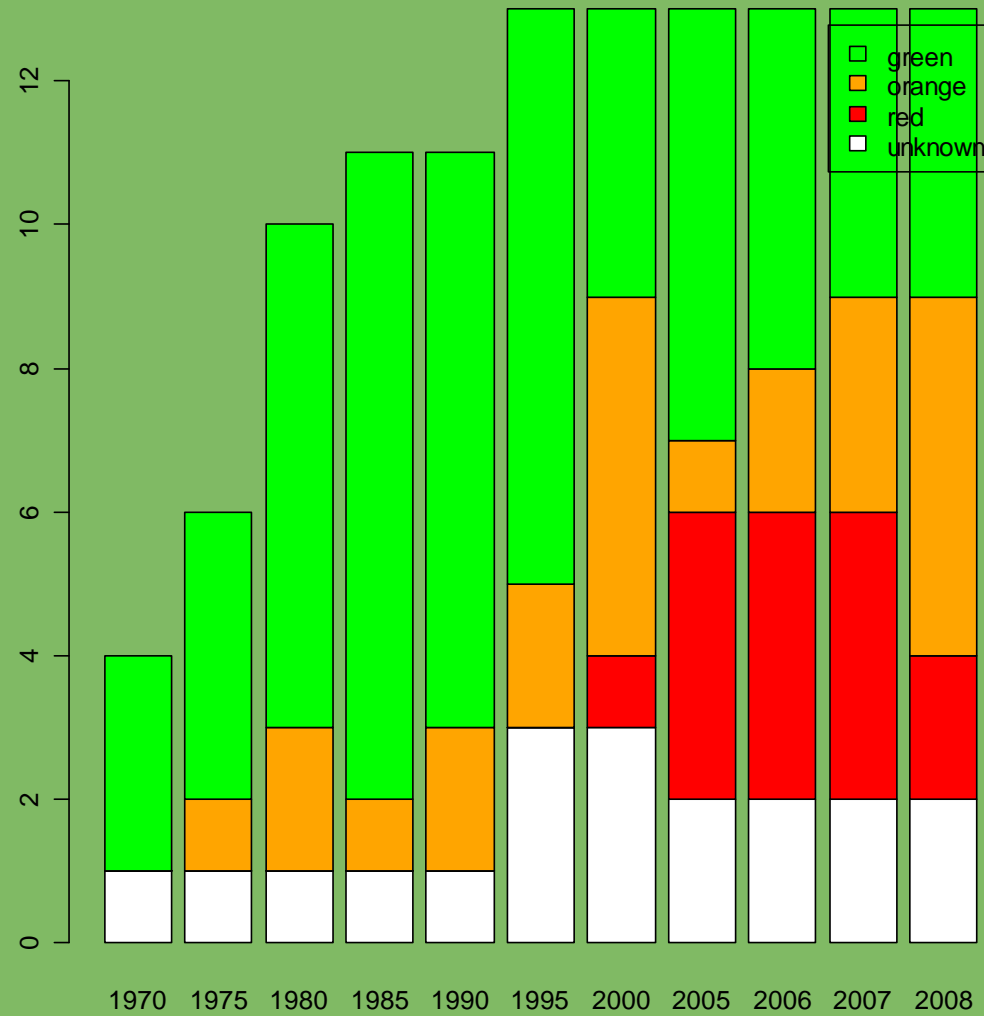


Back to the big picture?





Stock status: similar to last year





"No new advice"

ple-echw	Plaice in Division VIle (Western Channel)
sol-echw	Sole in Division VIle (Western Channel)
spr-ech	Sprat in Divisions VIId,e
cod-iris	Cod in Division VIIa (Irish Sea)
had-iris	Haddock in Division VIIa (Irish Sea)
her-nirs	Irish Sea herring (Division VIIa)
nep-7a	Nephrops in Division VIIa North of 53°N (Management Area VIIa)
ple-iris	Plaice in Division VIIa (Irish Sea)
sol-iris	Sole in Division VIIa (Irish Sea)
whg-iris	Whiting in Division VIIa (Irish Sea)
cod-7e-k	Cod in Divisions VIle-k
her-irls	Celtic Sea and Division VIIj herring
nep-7fgh	Nephrops in Divisions VIIfgh excl. 31E1 32E1-2 + VIIa, Southern Celtic Sea
ple-celt	Celtic Sea plaice (Divisions VIIf and g)
sol-celt	Sole in Divisions VIIf and g (Celtic Sea)
ang-78ab	Anglerfish (Budegassa & Piscatorius) in Divisions VIIb-k and VIIIa
had-7b-k	Haddock in Divisions VIIb-k
ple-7h-k	Plaice in the Southwest of Ireland (Areas VIIh and VIIk)
sol-7h-k	Sole in the Southwest of Ireland (Areas VIIh-k)



Sharks and Rays advice: reason for concern

Species	Area	State of stock	Advice
Common skate	VI	Depleted	<i>No target fisheries</i>
	VII	Depleted	<i>No target fisheries</i>
Thornback ray	VIa	Stable/increasing	<i>Status quo catch</i>
	VIIa,f,g		
Spotted ray	VIa	Stable/increasing	<i>Status quo catch</i>
	VIIa,f,g		
Cuckoo ray	VIa	Stable/increasing	<i>Status quo catch</i>
	VII	Uncertain	No advice
Blonde ray	VIa, VIIa and VIIf	Uncertain	No advice
Undulate ray	VIIj and VIIde	Uncertain (but with cause for concern)	<i>No target fisheries</i>
Smalleyed ray	VIIIf	Stable/increasing	<i>Status quo catch</i>
Sandy ray	VI	Uncertain	No advice
	VIIb,c,h-k	Stable/increasing	No advice
Shagreen ray	VII	Uncertain	No advice
White skate	VII	Severely depleted	<i>No fisheries</i>
Lesser-spotted dogfish	VIa and VII	Stable/increasing	<i>Status quo catch</i>
Greater-spotted dogfish	VII	Locally stable and increasing in VIIa	<i>Status quo catch</i>
Smooth hounds	VII	Stable/Increasing	<i>Status quo catch</i>
Angel shark	VII	Severely depleted	<i>No fisheries</i>





You want to be **on top** of the new information



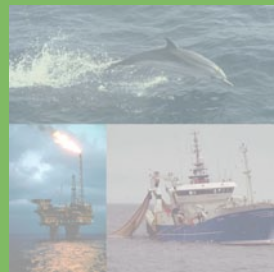


We have achieved more input from expert groups





Still to come: data workshops





Still to come: fisheries & ecosystem focus





ICES and RACs: manage the process of change

