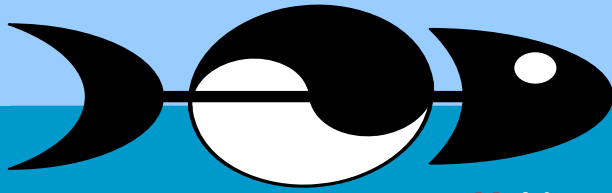


North Western Waters
Regional Advisory Council
Madrid Meeting, 4th March 2010.

Introducing the North Western Waters **Atlas**

Paul Connolly
The Marine Institute, Ireland
EU MEFPO Project



MEFEPO

Making the European Fisheries Ecosystem Plan Operational

Content

- (1) The MEFEPO Project
- (2) The Atlas Project
- (3) The NWW Atlas



WP1

Characterisation of the Ecological,
Social and Economic Features of
NWW, SWW and NS

Month 1 to 7

MI 3.4 Months

WP2

Develop Management Objectives
supported by Metrics and Indicators
for NWW, NS and SWW

Month 8 - 11

MI 4 Months

WP3

Operational Instruments and
Adaptive Management

Months 8 to 13

MI 1.5 Months

WP10

Steering
Committee

Ongoing

MI 0.5 Months

MEFEPO

EU - FP7- KBBE - 2007 - 1

**Making the European Fisheries
Ecosystem**

Plan Operational

Oct 2008 to Sept 2011

WP4

Institutional Framework of
Fisheries Management

Months 11 - 19

MI 1.25 Months

WP9

Dissemination

Ongoing

MI 1.7 Months

WP5

Development of Operational
Objectives for NS, NWW, SWW

Months 20-25

MI 5.5 Months

WP8

Synthesis and Review of
Progress

Months 36

MI 0.5 Months

WP7

Develop Operational
FEPS for NS,
NWW, SWW

Months 31 to 35

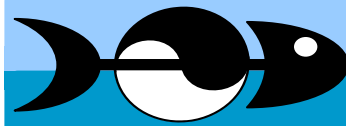
MI 5 Months

WP6

Identifying Operational
Challenges to introducing EAFM

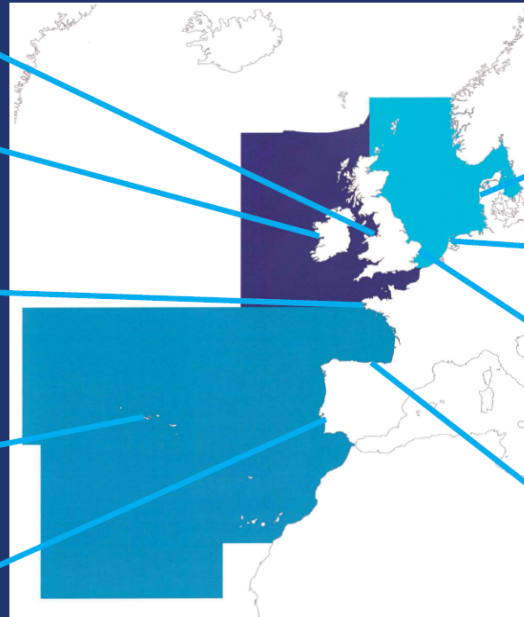
Months 26 to 30

MI 4 Months



MEFEPO

MEFEPO Partners



For further information about the project, please visit our website:

www.liv.ac.uk/marinebiology/mefepo.html

Or email:

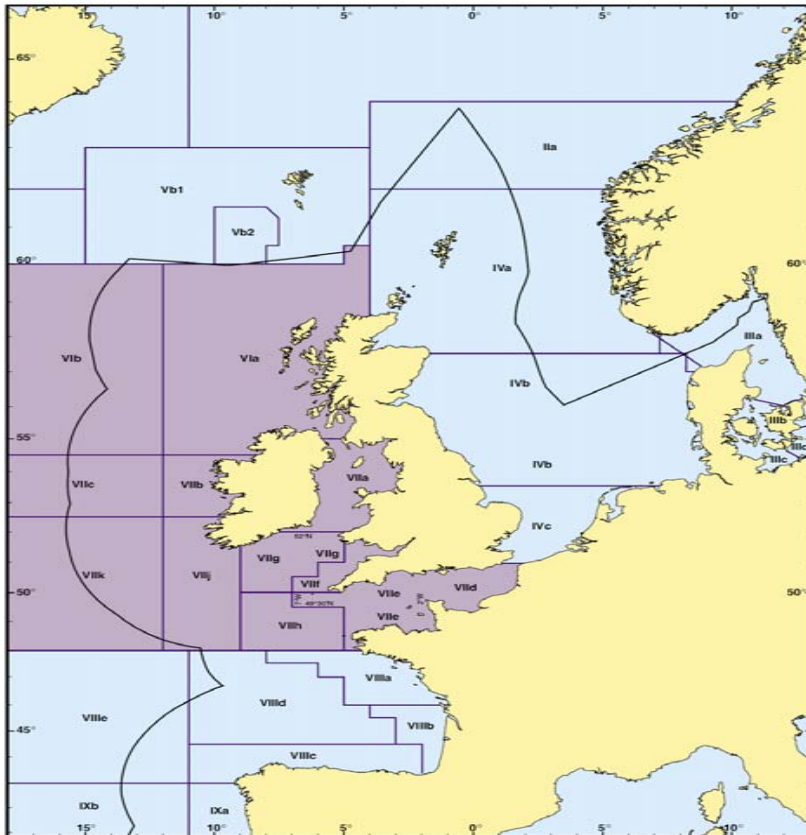
mefepo@liv.ac.uk



MEFEPO

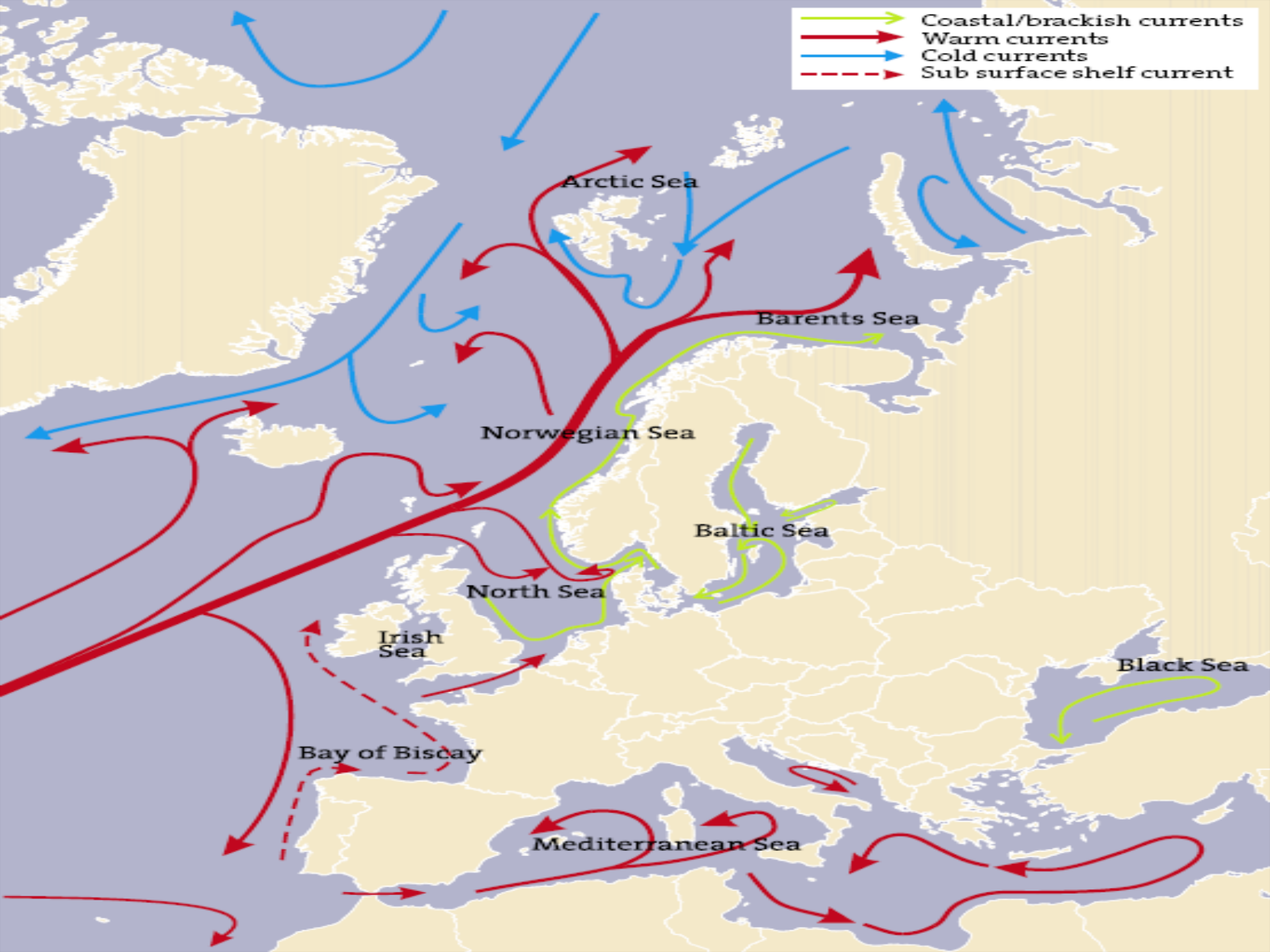
CONTENT

North Western Waters **ATLAS**



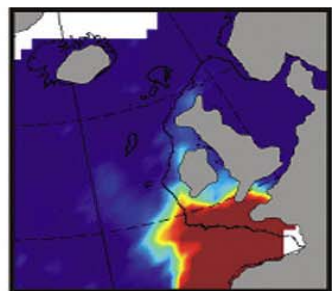
- Area and Depth
- Water Movements
- Climate
- Sea Temperature
- Sea Floor Habitat
- Contaminants
- Plankton
- Sea Birds
- Sea Mammals
- Protected Areas
- Fish Spawning Areas
- Distribution of Juvenile Fish
- Fishing Activity
- NWW Case Studies
- Other Human Activities
- Ecosystem Overviews



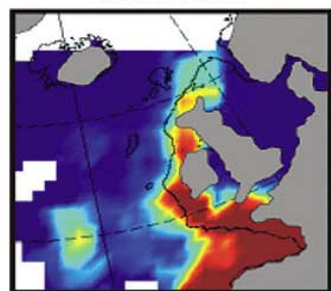


Warm-temperate
pseudo-oceanic species

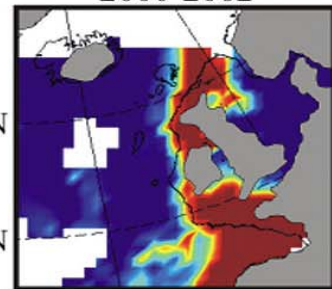
1958-1981



1982-1999

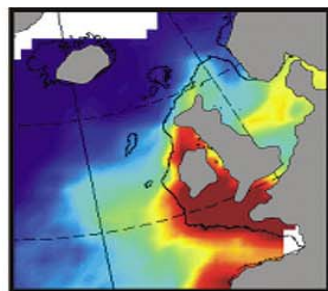


2000-2002

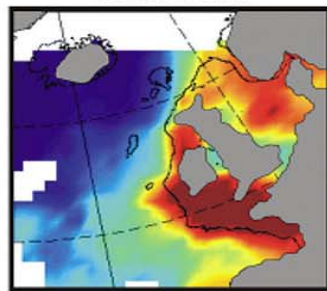


Temperate
pseudo-oceanic species

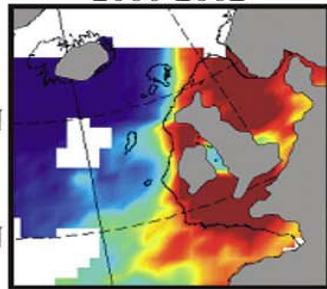
1958-1981



1982-1999

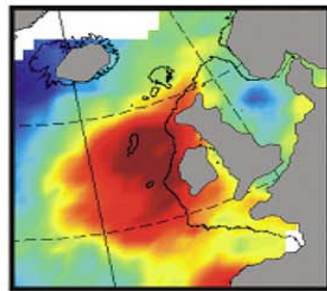


2000-2002

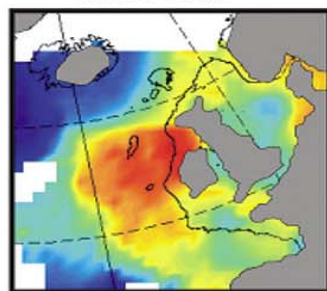


Cold-temperate
mixed-water species

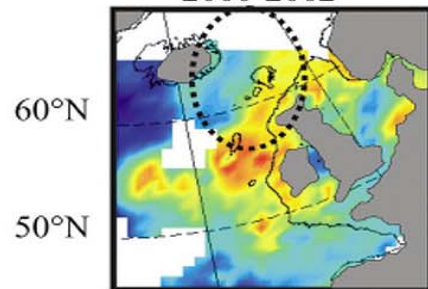
1958-1981



1982-1999

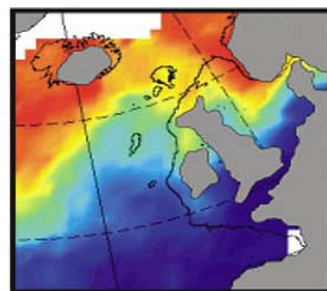


2000-2002

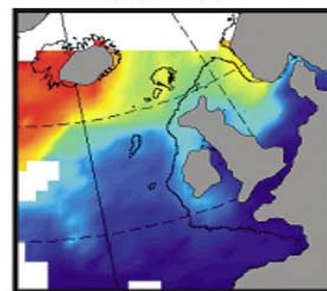


Subarctic
species

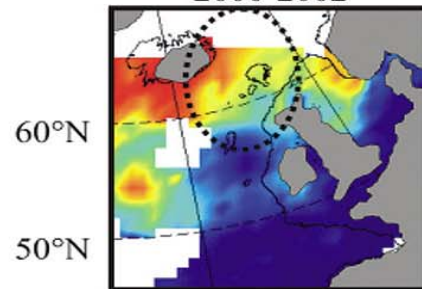
1958-1981



1982-1999



2000-2002



0.00 0.02 0.04 0.06 0.08 0.10

Mean number of species
per CPR sample

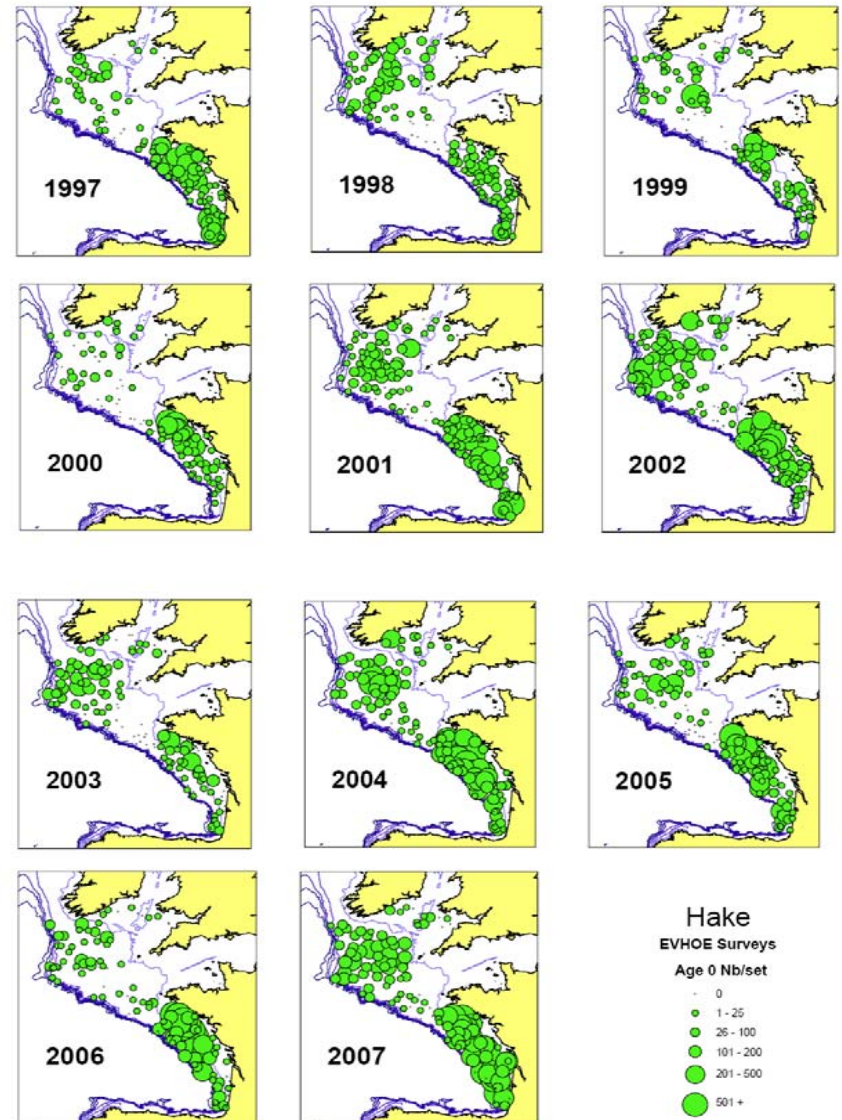
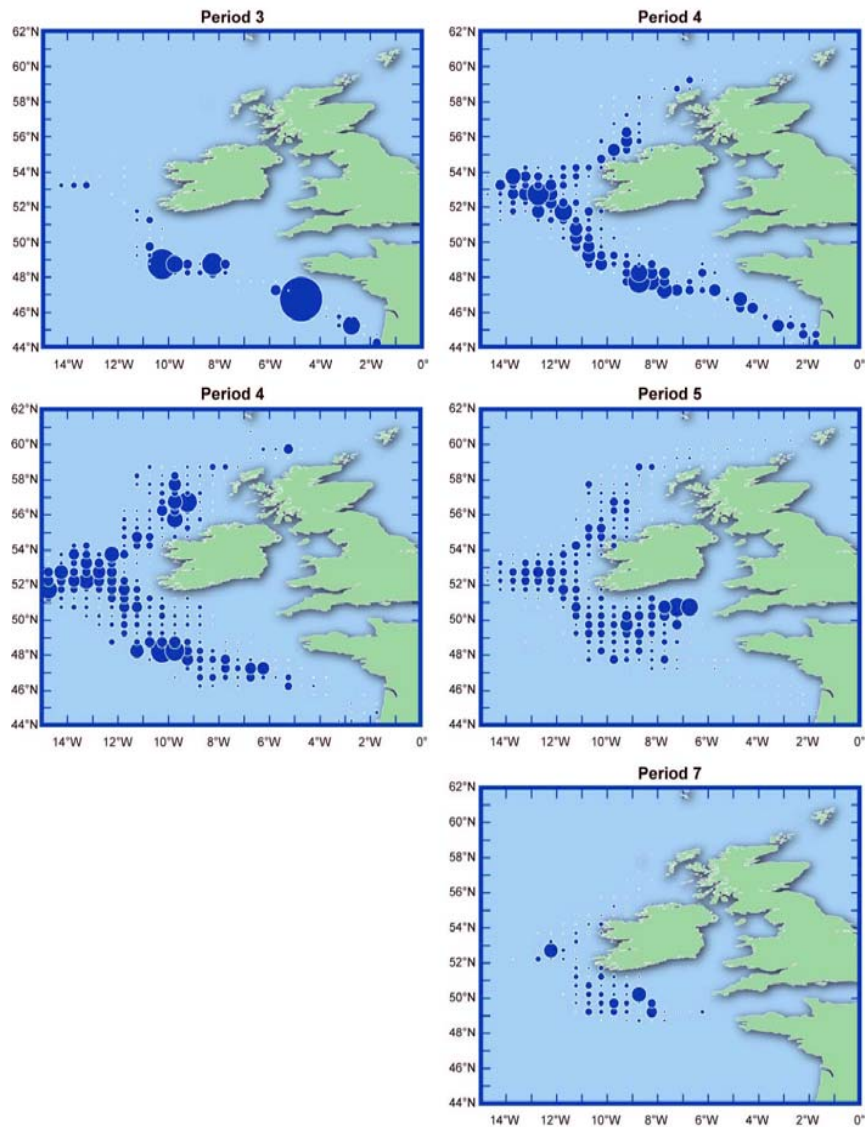
0.0 0.2 0.4 0.6 0.8 1.0

0.0 0.2 0.4 0.6 0.8 1.0

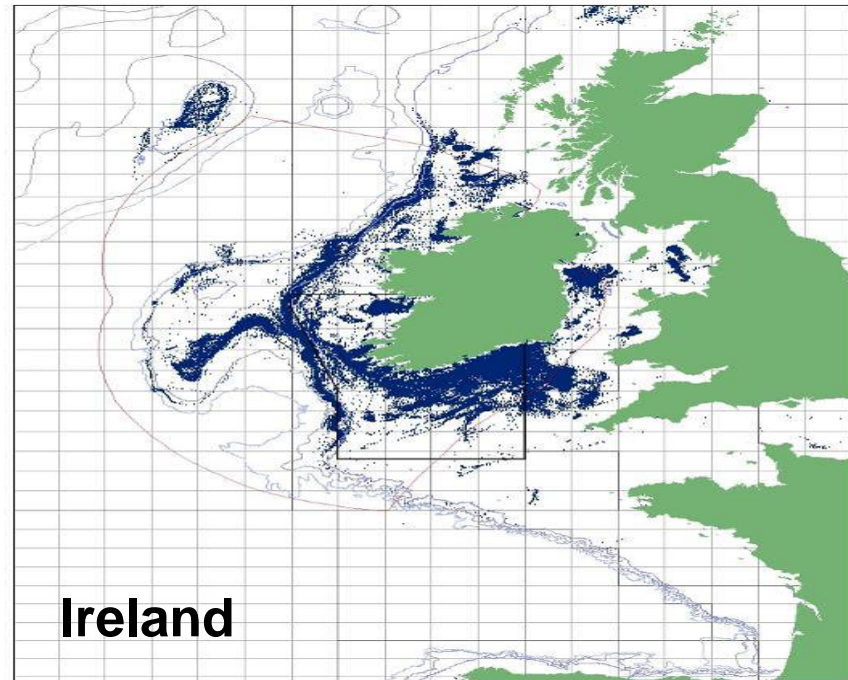
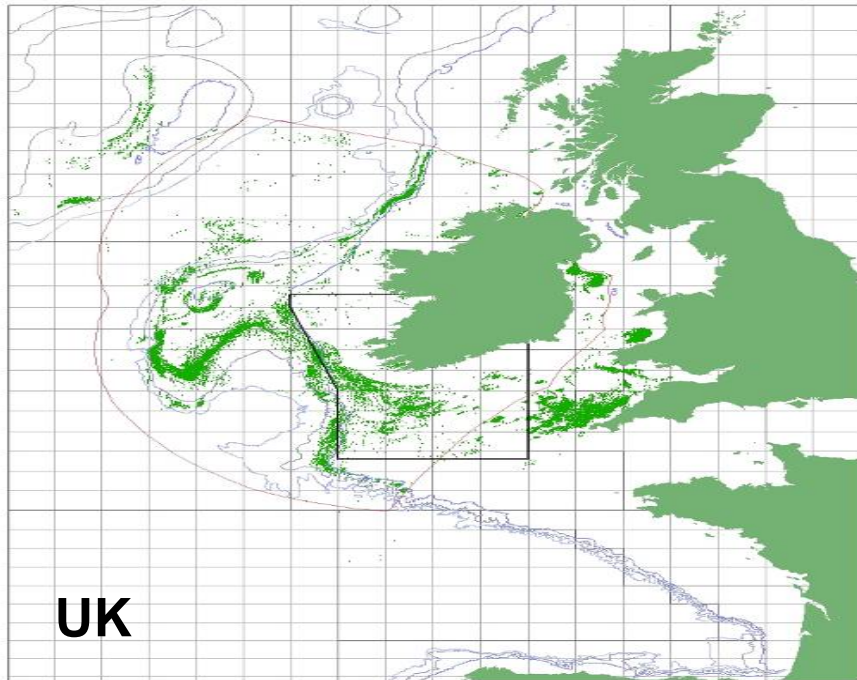
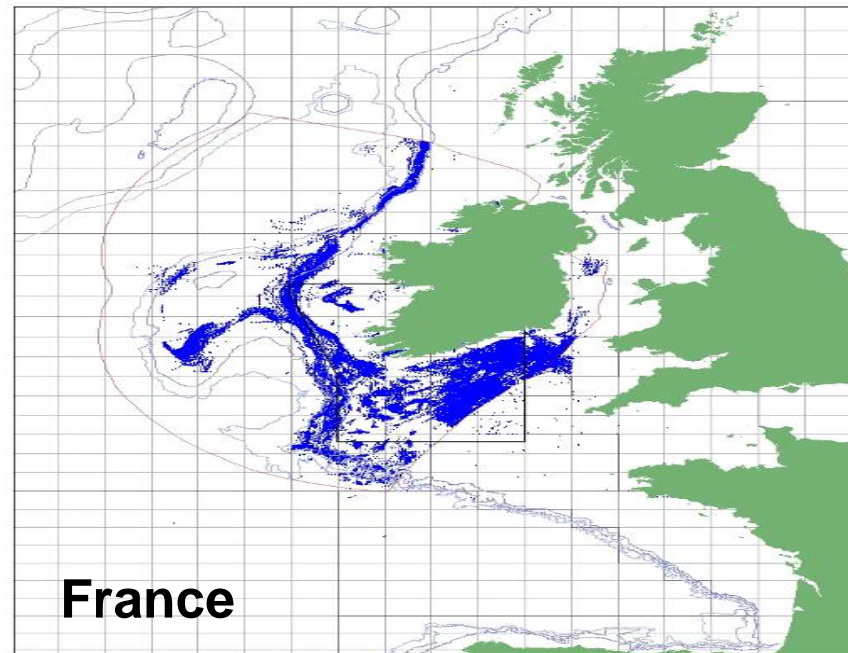
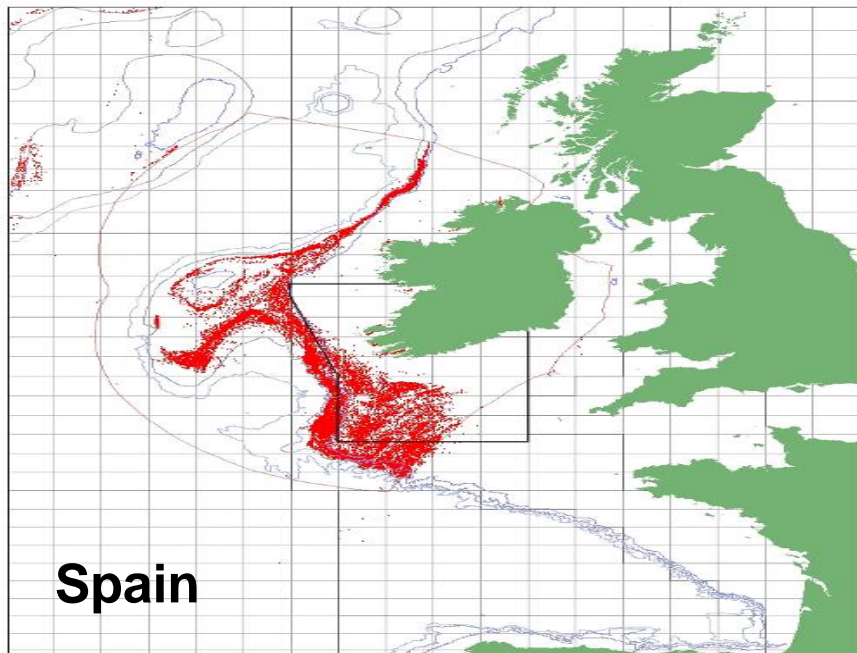
0.0 0.2 0.4 0.6 0.8 1.0

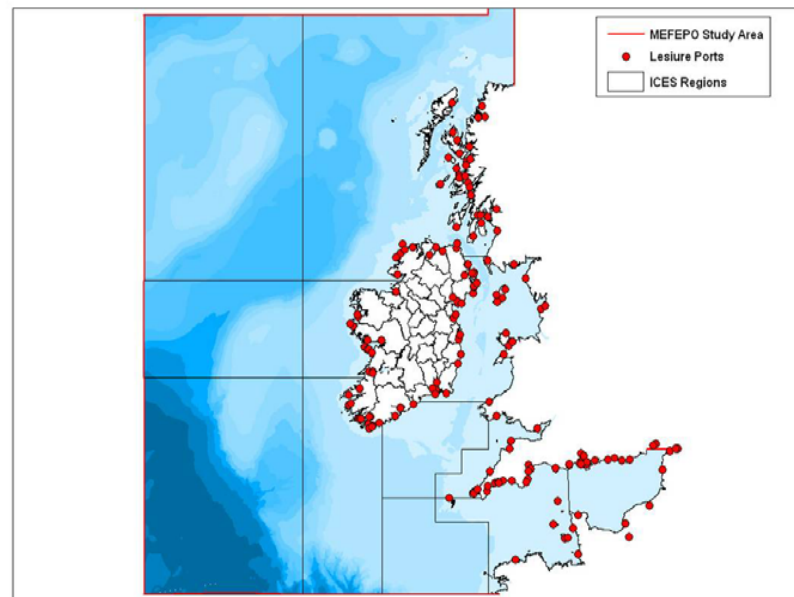
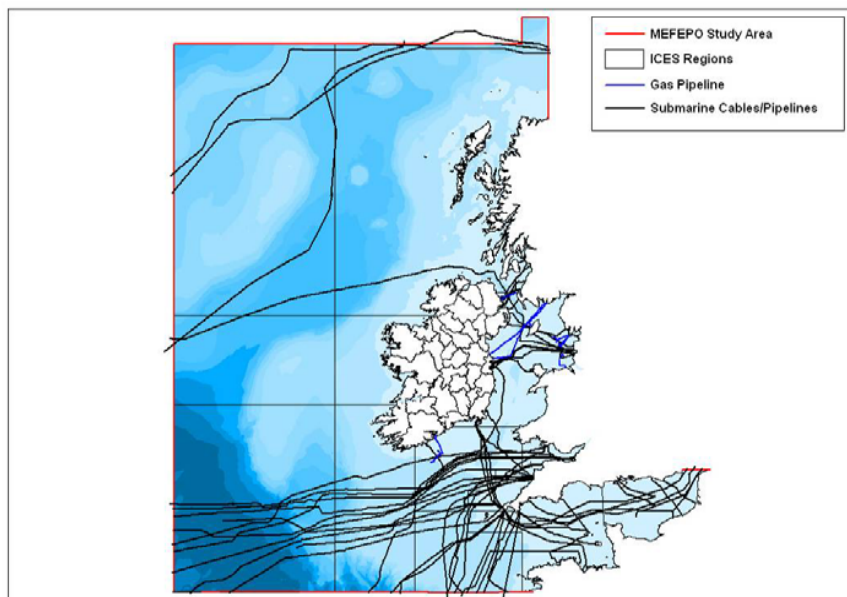
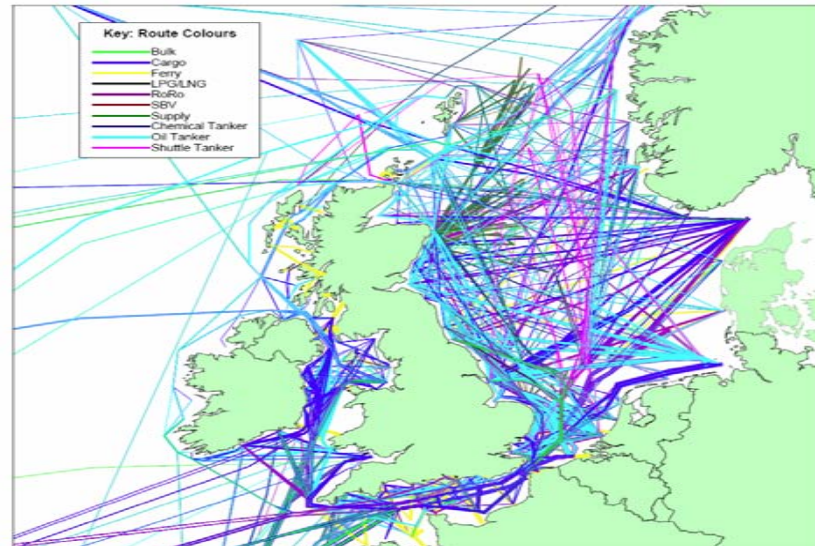
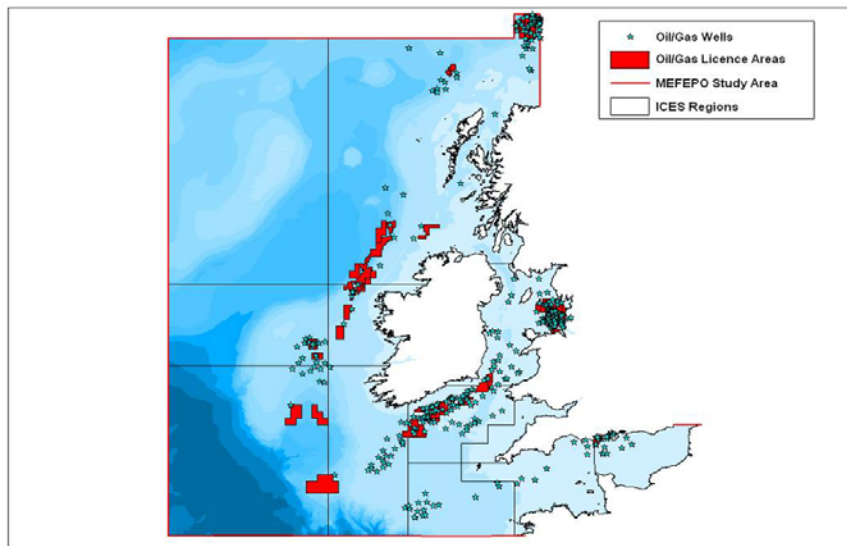
updated from Science (2002), 296: 1692-1694

NWW – Key Spawning Area









Key Spawning Areas for North east Atlantic Pelagics

**Very Important EU
Fishing Area
1.9 Million Tonnes
2007**

Discarding Issue

Key Spawning and Juvenile Areas for Northern Hake

Human Activities
Shipping, Oil and Gas
Mariculture

Key Oceanographic Feature Gulf Stream and NAO

**Extensive
Deep Water
Coral Reefs**

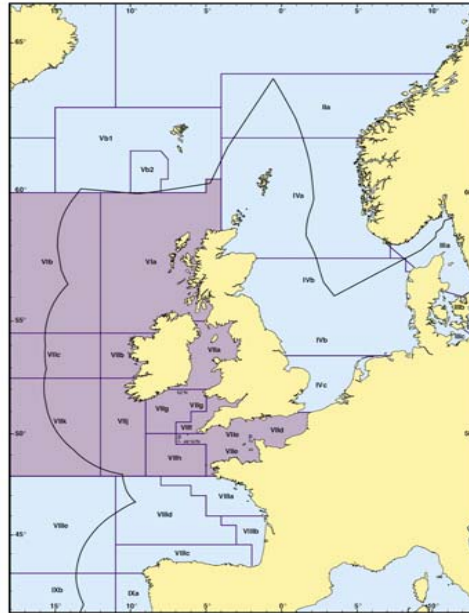
Climate Change Impacts

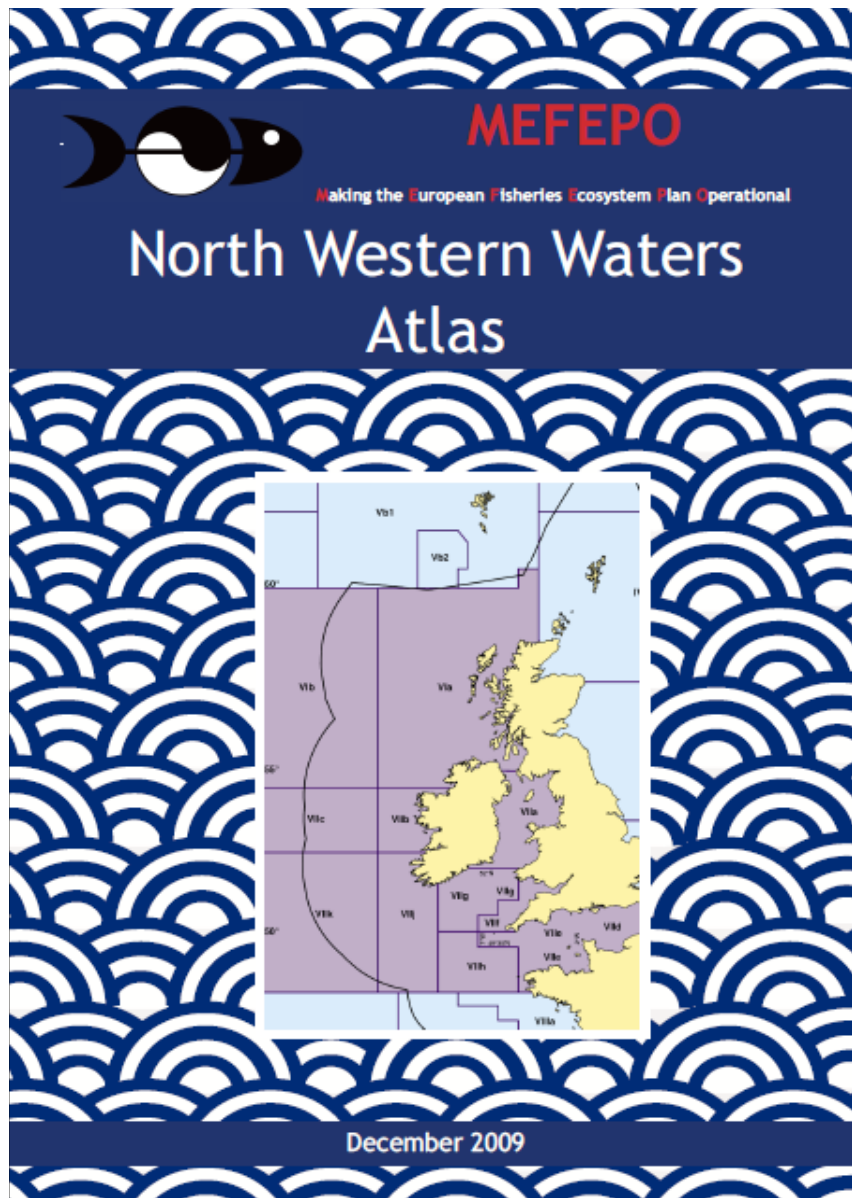
**NWW important for a
diverse range of
seabirds**

Diverse Ecosystems

**Cetaceans
Important Breeding
And Migration Route**

Seals
Many colonies
in NWW





The North Western Waters **Atlas**

1st Edition - December 2009

Based on
Feedback and New Information
2nd Edition - January 2012