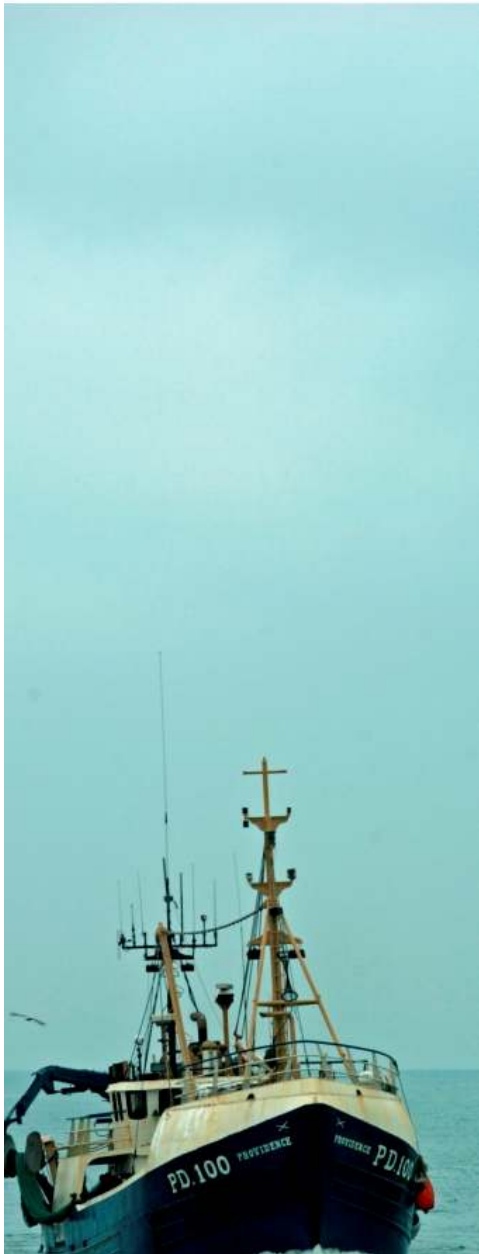


# MPA proposals West of Scotland



marinescotland



marinescotland  
science

# Purpose of this presentation

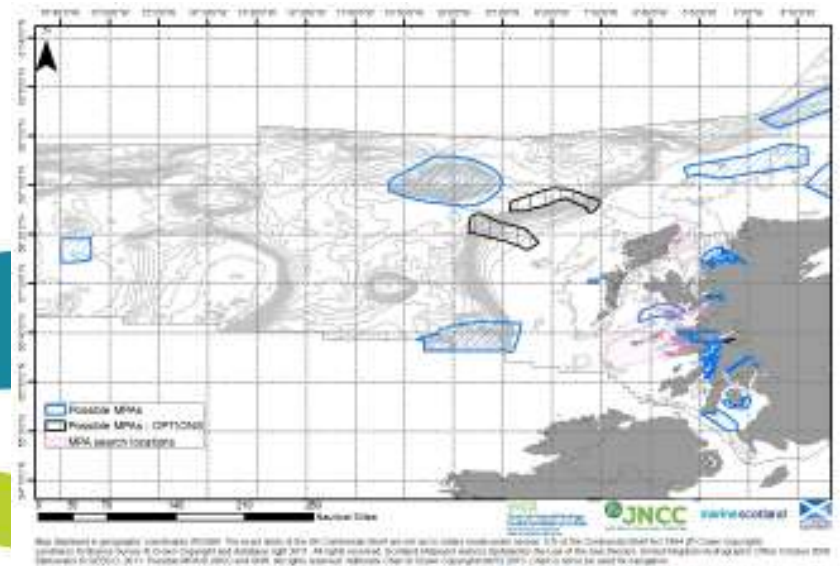
CONSEIL CONSULTATIF  
RÉGIONAL POUR  
LES EAUX OCCIDENTALES  
SEPTENTRIONALES

NORTH WESTERN  
WATERS  
REGIONAL ADVISORY  
COUNCIL

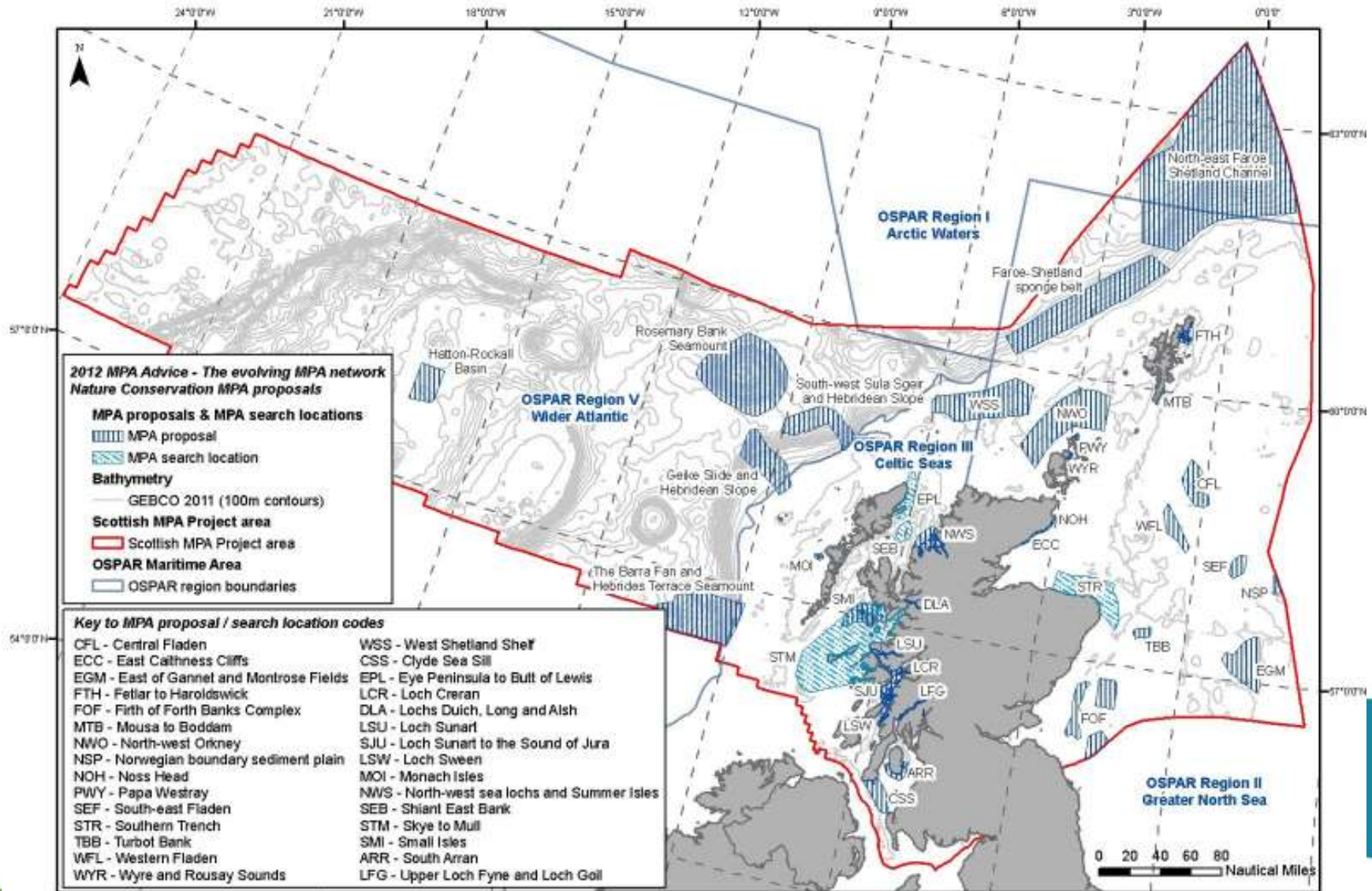
CONSEJO CONSULTIVO  
REGIONAL PARA  
LAS AGUAS  
NOROCCIDENTALES



- **Support Consultation**
  - Sites, features and management options
  - Basis for advice
  - WoS Site options
- **Answer any questions**



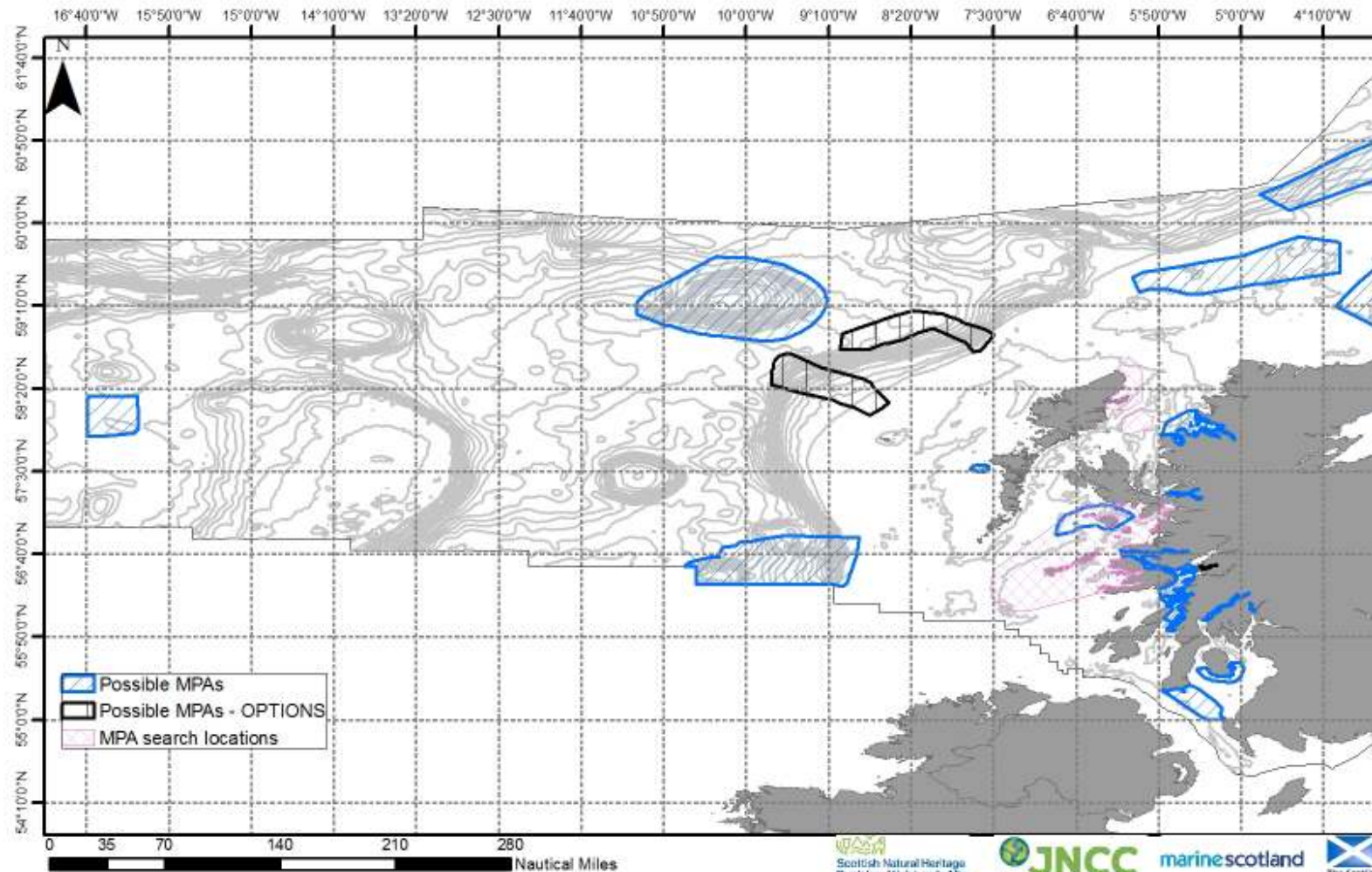
# Scottish MPA proposals Nov 2012



Map projected in Europe Albers Equal Area Conic (Modified Standard Parallels - Standard Parallel 1 = 50°; Standard Parallel 2 = 55°). The exact limits of the UK Continental Shelf are set out in orders made under section 1(7) of the Continental Shelf Act 1964 (© Crown Copyright). Coastline © Crown copyright and database right (2012). All rights reserved. Ordnance Survey Licence number 100017908. Bathymetry © GEBCO. NOT TO BE USED FOR NAVIGATION. MPA network © SNH, JNCC and Marine Scotland. 07.12.12. All rights reserved.



# West of Scotland

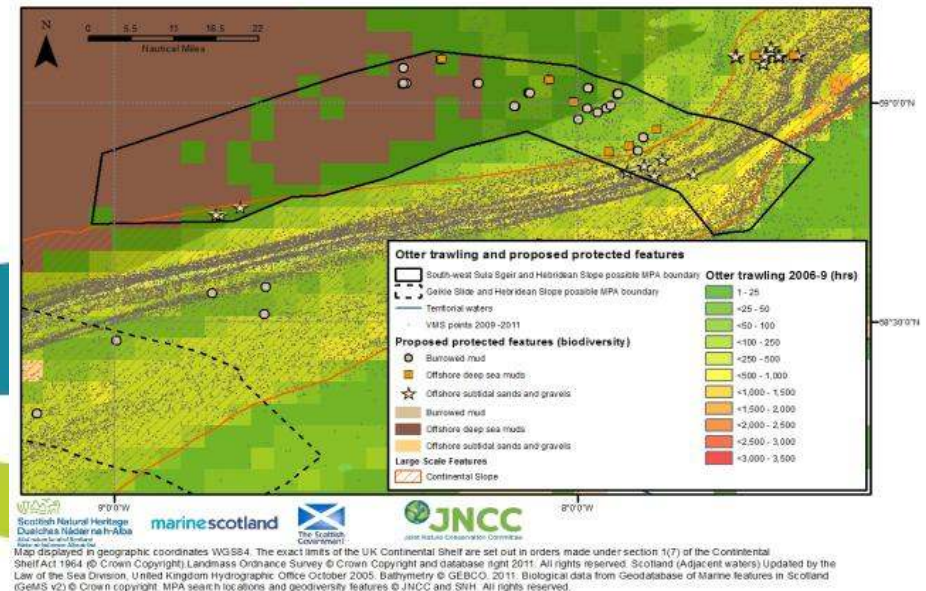
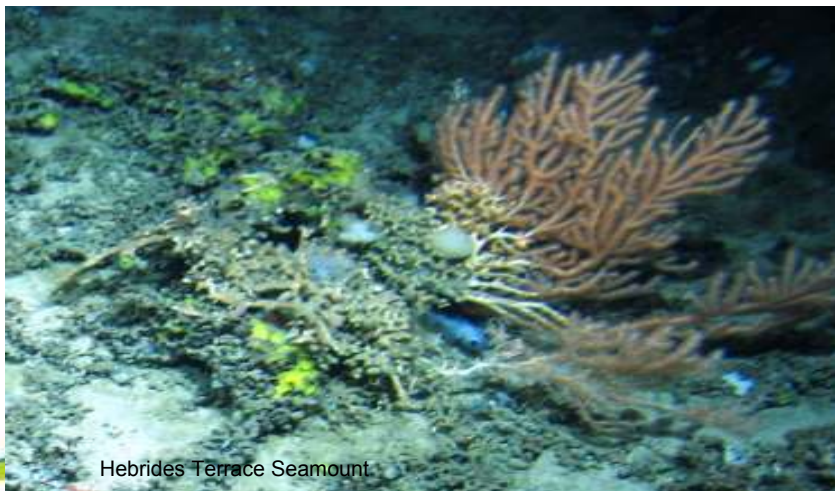


Map displayed in geographic coordinates WGS84. The exact limits of the UK Continental Shelf are set out in orders made under section 1(7) of the Continental Shelf Act 1964 (© Crown Copyright).  
 Landmass Ordnance Survey © Crown Copyright and database right 2011. All rights reserved. Scotland (Adjacent waters) Updated by the Law of the Sea Division, United Kingdom Hydrographic Office October 2005.  
 Bathymetry © GEBCO, 2011. Possible MPA © JNCC and SNH. All rights reserved. Admiralty Chart © Crown Copyright/UKHO 2013. Chart is not to be used for navigation.

# Management advice

## Based on

- Overlap of activities and features
  - VMS/survey data etc.
- Sensitivity of features to human activities



# Sensitivity

---

Where evidence on current “state” of the feature is limited

Response to Human activities

- Mortality (e.g. uprooting/removal/impact)
- Disturbance (surface and sub-surface)
- Sedimentation

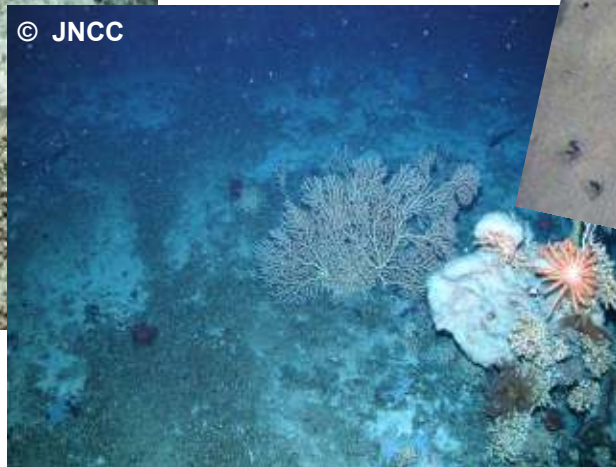
Recovery rates





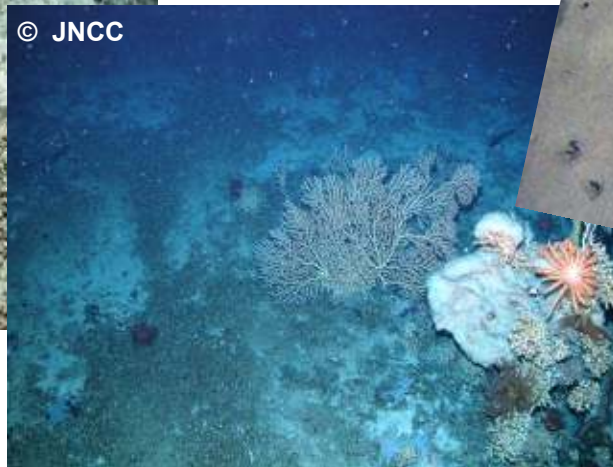
## West of Scotland Site Features

- Offshore deep sea mud and burrowed mud
- Offshore subtidal sands and gravels
- Seamount communities
- Deep sea sponge aggregations
- Orange roughy



## Sensitivity of the features

- Animals at surface (sponges, soft corals, gorgonians, sea pens etc)
- Animals below the surface (burrowing crustacea, worms etc).
- Orange roughy (long lived)





## Evidence used – Fisheries Guidance



# Evidence used – Fisheries Guidance

---

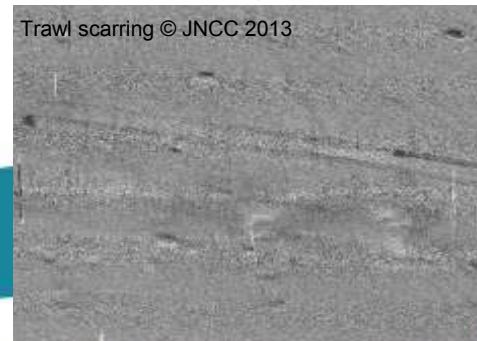
## Evidence of impact and slow recovery

- Seamount communities
- Sponges
- Orange roughy



## Potential impact – uncertain recovery

- Sand and gravel habitats
- Burrowed mud habitats



**Certainty**



# Management options

---

Based on **Risk** to achieving conservation objective

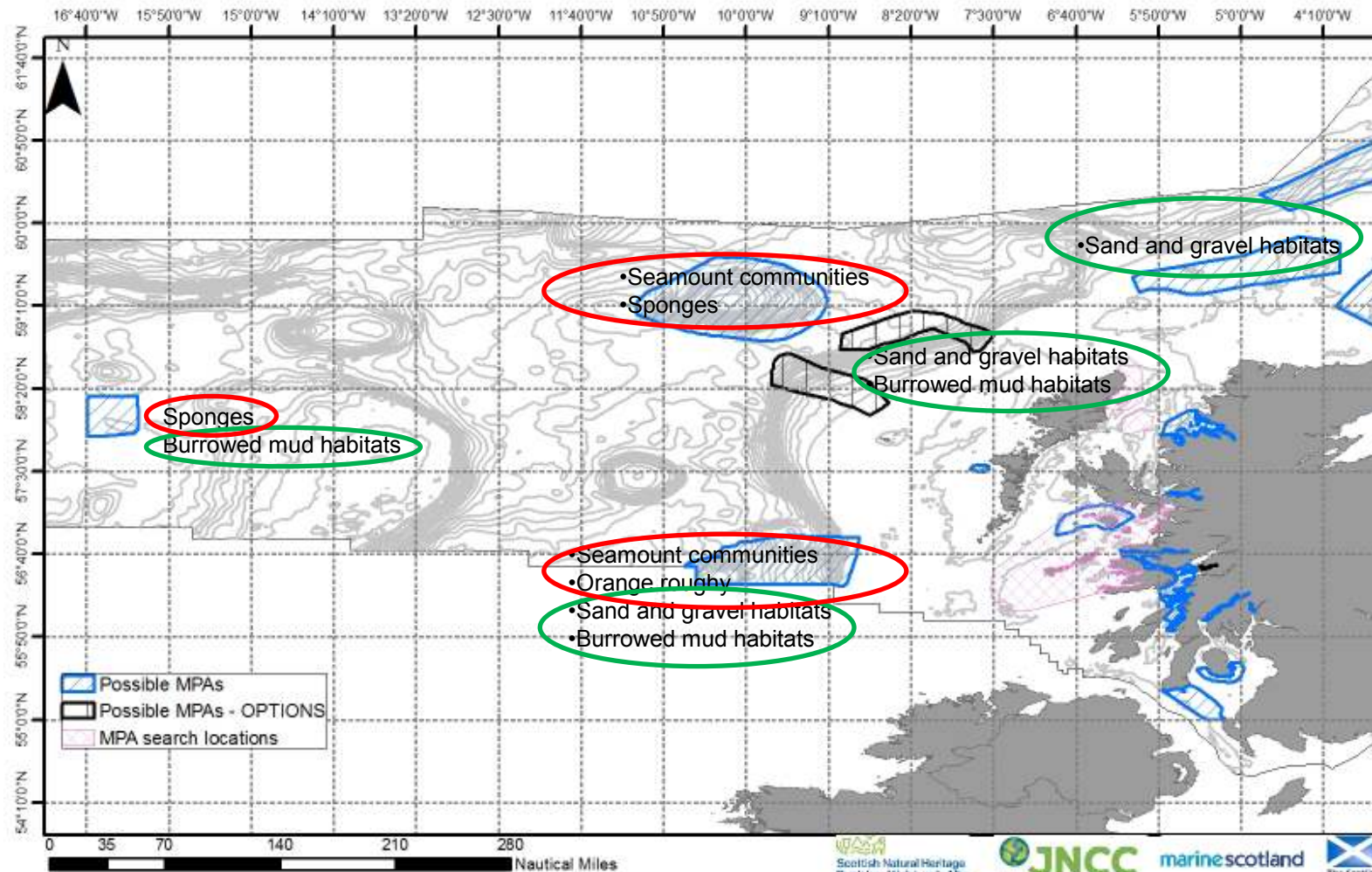
Range of options

- **no additional management** required
- management to **reduce/limit** pressure
- management to **remove/avoid** pressure





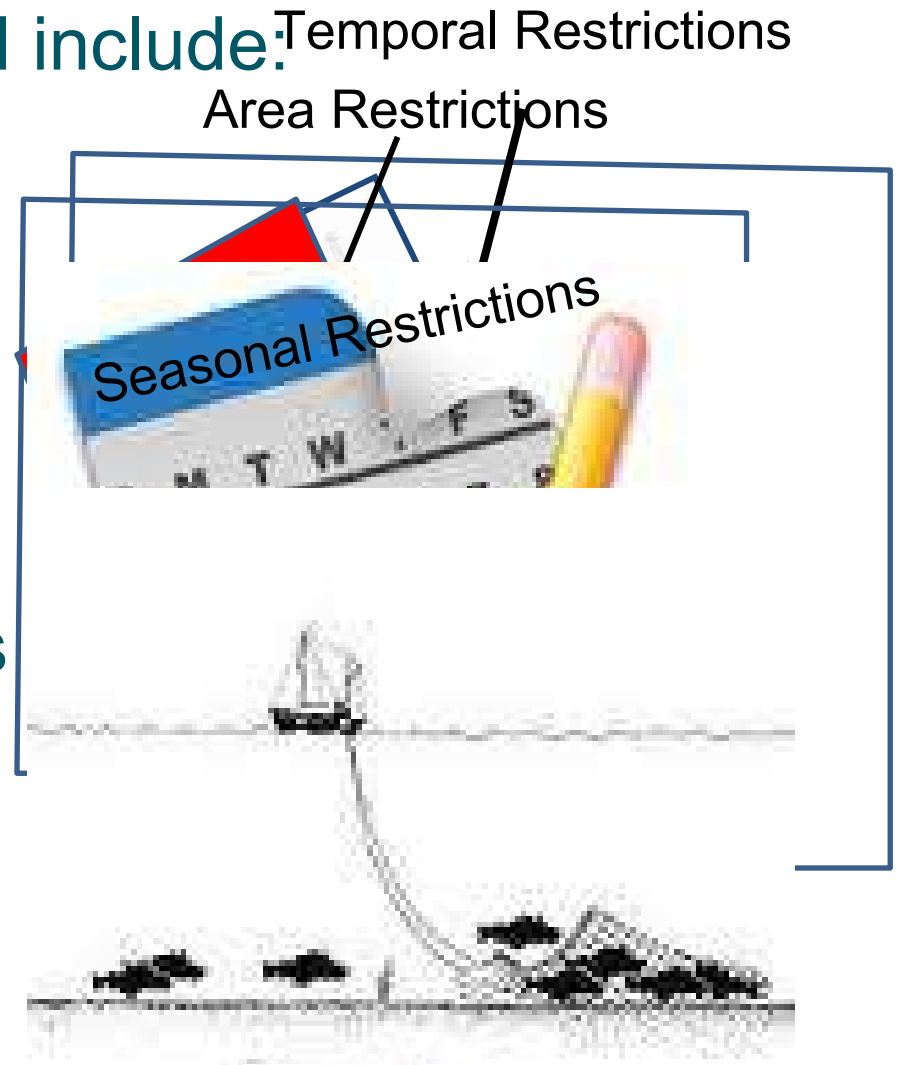
# Sites and features



# Potential management to reduce/limit pressure

Potential measures could include:

- Area restrictions
- Temporal restrictions
- Seasonal restrictions
- Gear restrictions



# Fishing activities

---

VMS data 2006-2011

Landings data 2001-2011

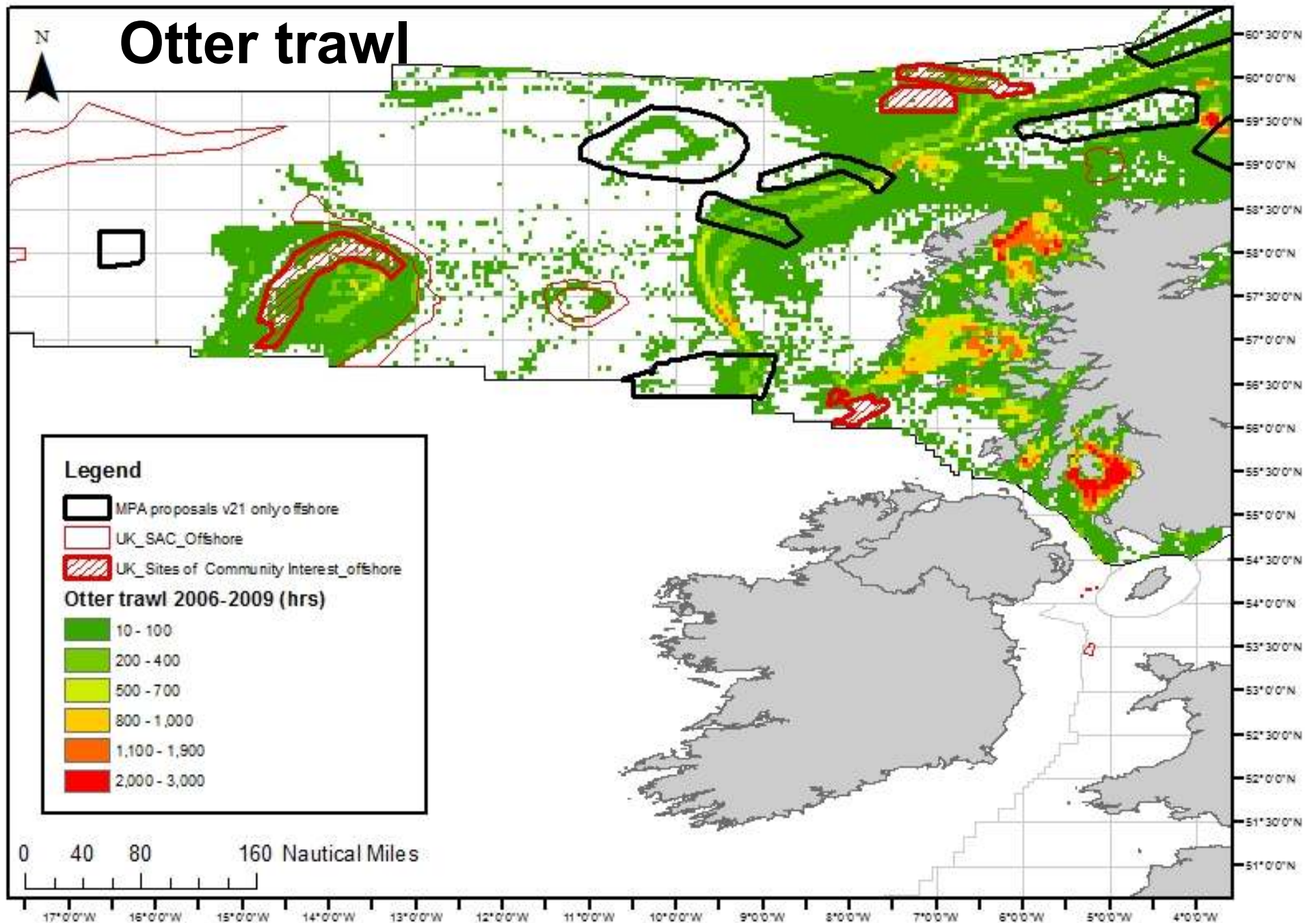
## Summary

- Multinational - UK, France and Spain.
- Monkfish and Hake - upper slope
- Deep water species
- Otter trawling and longlining

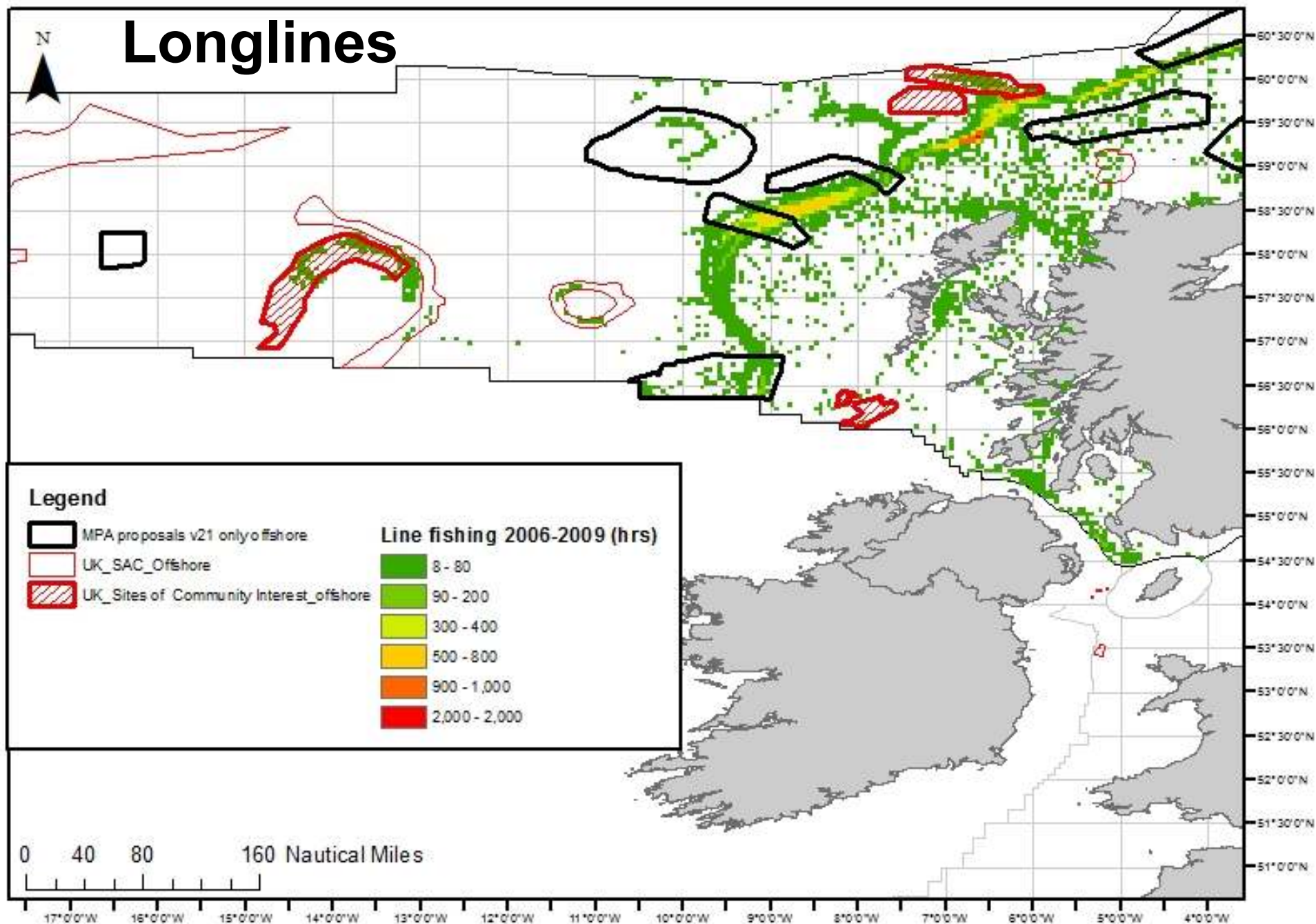




# Otter trawl



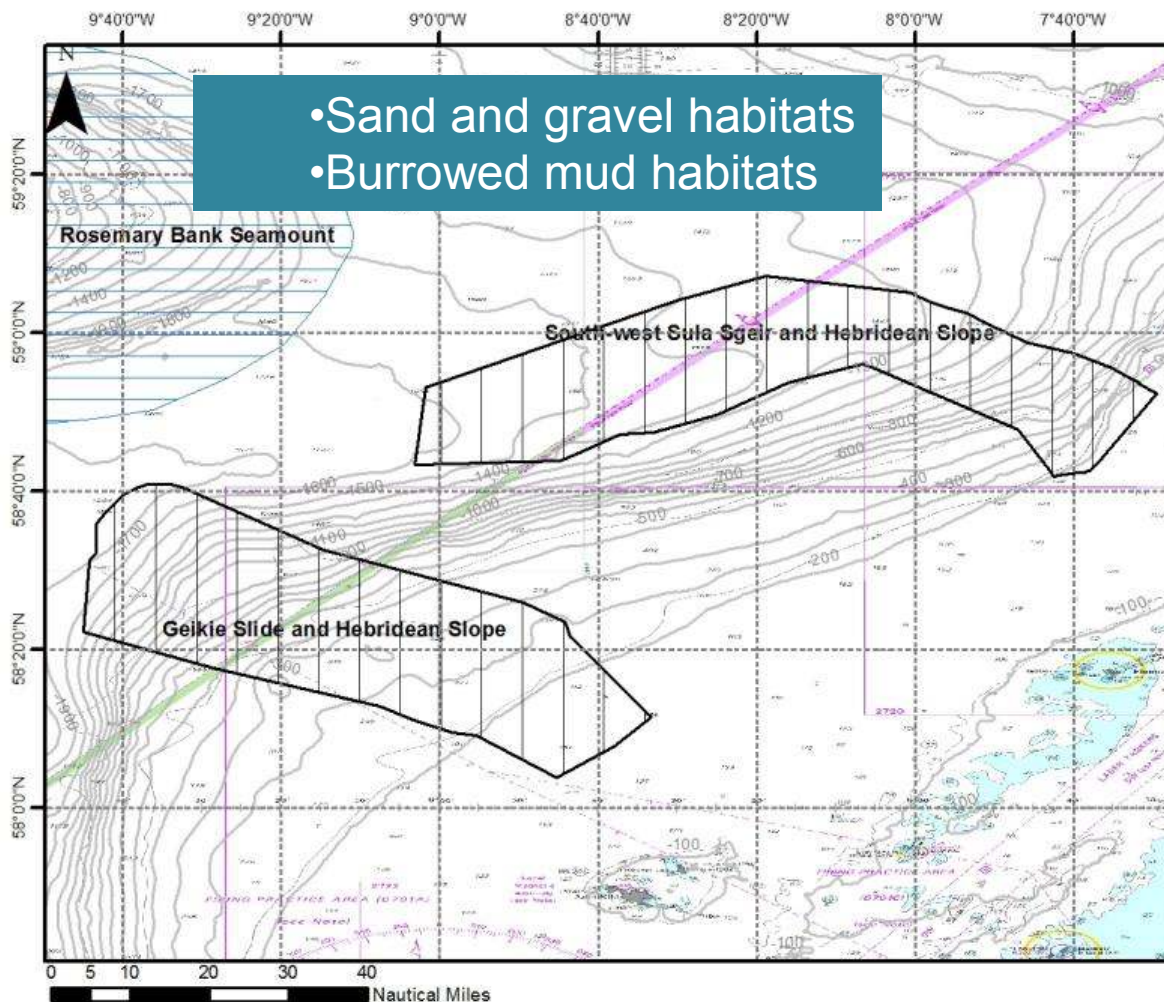
# Longlines



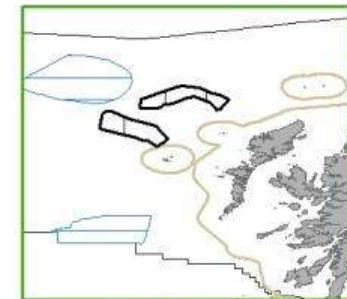


# West of Scotland - Site options

## Network options: equivalent contribution to the network



- Possible MPAs - OPTIONS
- Possible MPA



Scottish Natural Heritage  
Dualchas Nàdair na h-Alba  
All of nature for all of Scotland  
Nàdar air fad airson Alba air fad

JNCC  
Joint Nature Conservation Committee

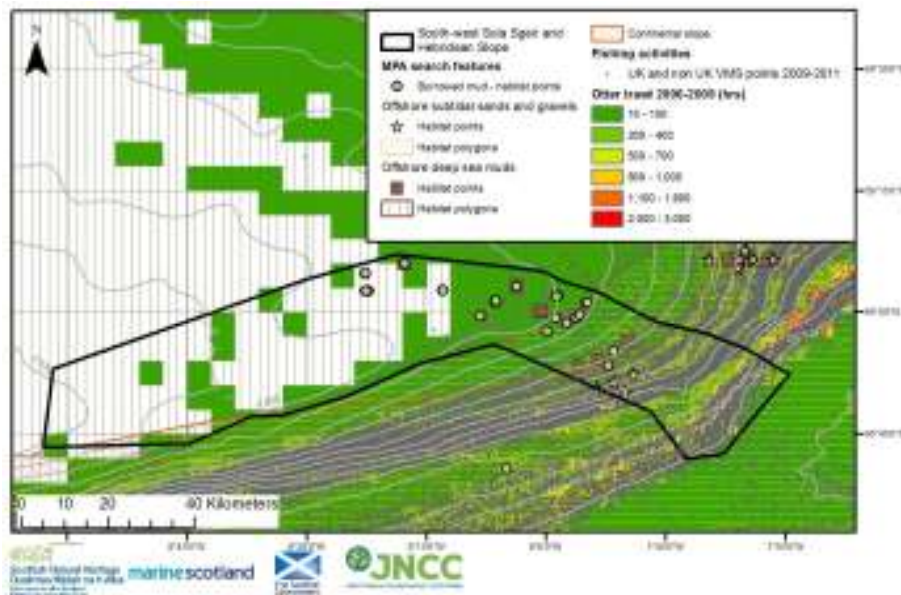
marinescotland



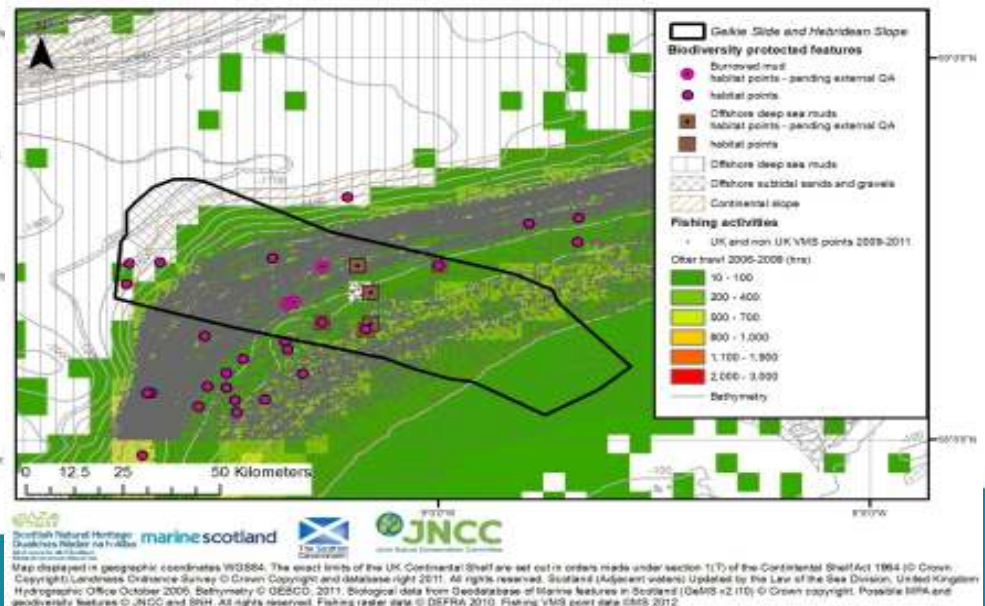


# Management options (e.g. Slope site options)

## Otter trawl



Map displayed in geographic coordinates WGS84. The exact limits of the UK Continental Shelf are set out in orders made under section 1(1) of the Continental Shelf Act 1964 (© Crown Copyright/Landmark Ordnance Survey © Crown Copyright and database right 2011. All rights reserved. Scotland (adjacent waters) Updated by the Law of the Sea Division, United Kingdom Hydrographic Office October 2008. Bathymetry © OESCD, 2011. Biological data from Seabedbase of Marine Features in Scotland (DSMS v2.11) © Crown copyright. Possible BPA and geodiversity features © JNCC and SRH. All rights reserved. Fisheries vessel data © OSPRA 2010. Fisheries VMS point data © SRH 2012.



Map displayed in geographic coordinates WGS84. The exact limits of the UK Continental Shelf are set out in orders made under section 1(1) of the Continental Shelf Act 1964 (© Crown Copyright/Landmark Ordnance Survey © Crown Copyright and database right 2011. All rights reserved. Scotland (adjacent waters) Updated by the Law of the Sea Division, United Kingdom Hydrographic Office October 2008. Bathymetry © OESCD, 2011. Biological data from Seabedbase of Marine Features in Scotland (DSMS v2.11) © Crown copyright. Possible BPA and geodiversity features © JNCC and SRH. All rights reserved. Fisheries vessel data © OSPRA 2010. Fisheries VMS point data © SRH 2012.

## Industry meeting – Inverness 25<sup>th</sup> June

---

### Outcomes

1. Sula Sgeir of greatest value for UK vessels.
2. Suggestion that selection of individual features from both sites may minimise impact
3. More meetings to be organised during consultation
4. Consult with industry on management boundaries – Complex boundaries not a problem



# Consultation

- **Public consultation (16 weeks)**
  - Site summaries
  - Data confidence assessments
  - Management option papers (MOP)
  - Fisheries management guidance
  - Translated summaries (process & MOP)



## Next steps

- Continue dialogue with stakeholders – facilitate responses to consultation
- West of Scotland offshore sites – CFP measures
- Develop management proposals with industry

**Thank you**



# What next

---

## Ongoing monitoring of managed areas

- Has condition deteriorated/improved  
e.g. Increase in diversity/abundance

## Adaptive management

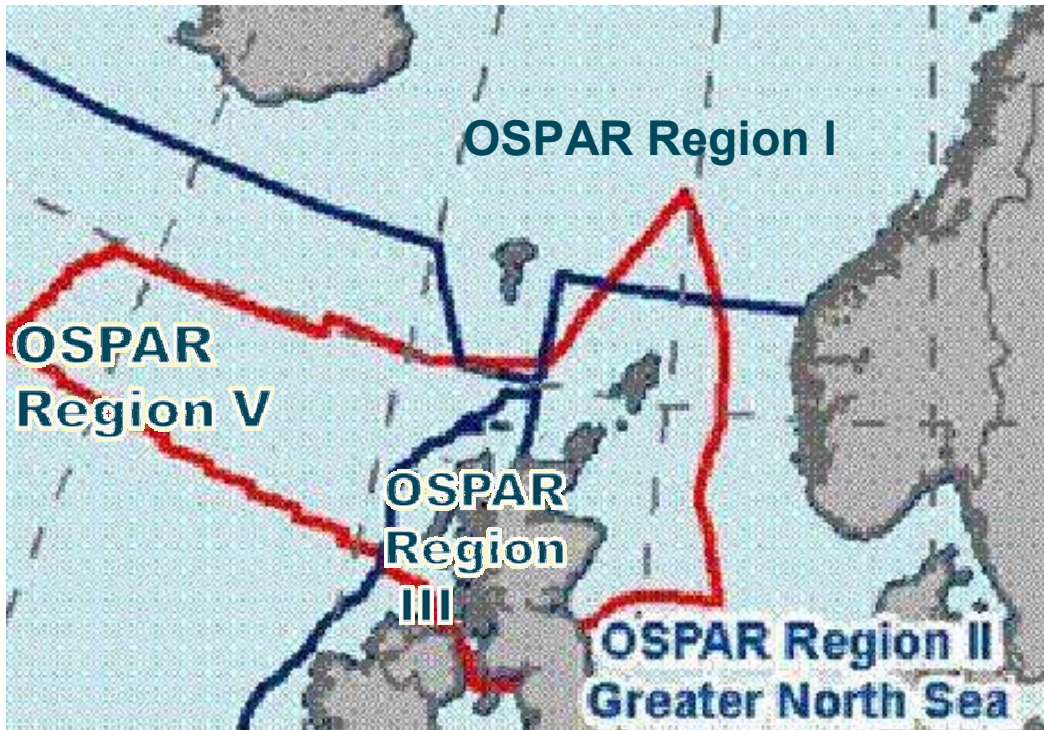




# MPA management

- JNCC provide advice & MS to lead on development of management measures
- The purpose of an MPA is not to restrict fishing!  
Only where managing activity will help achieve conservation objective
- West of Scotland offshore sites – CFP measures
- Develop management proposals with industry

# Feature coverage in the network



## *Principles*

- Replication
- Representation
- Geographic range and ecological variation
- Linkages
- Resilience

# MPA Selection Guidelines



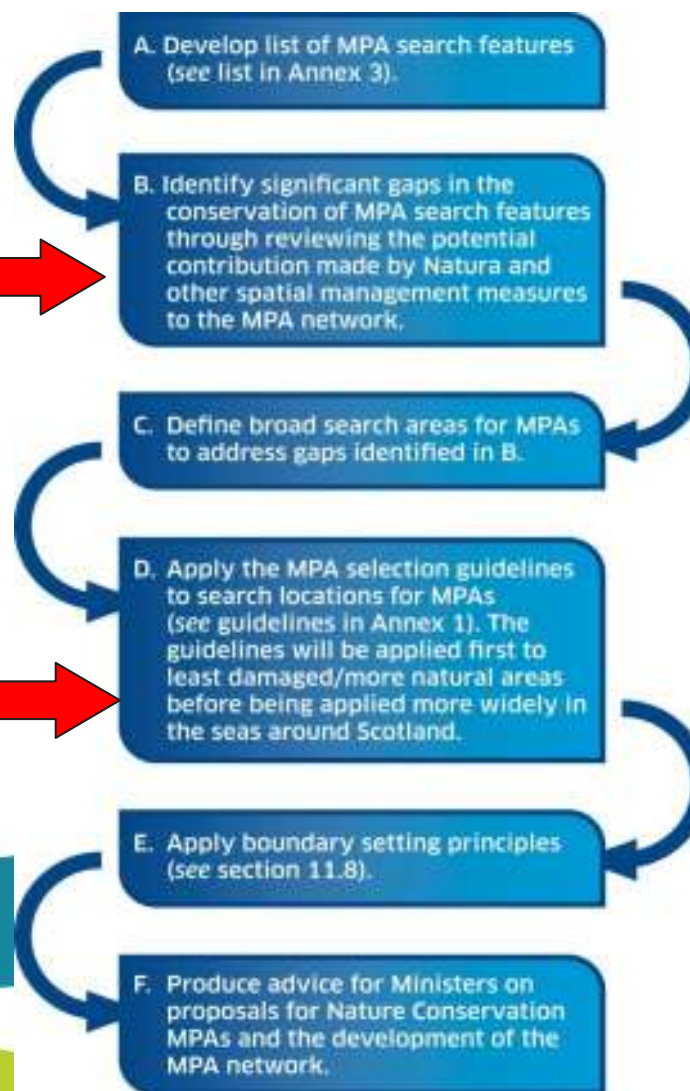
Joint Nature Conservation Committee

## *Agreed process*

Existing protected areas

Other area-based measures

Least damaged/more natural  
Locations



See Fig. 4 MPA Selection Guidelines



# Least damaged/more natural locations



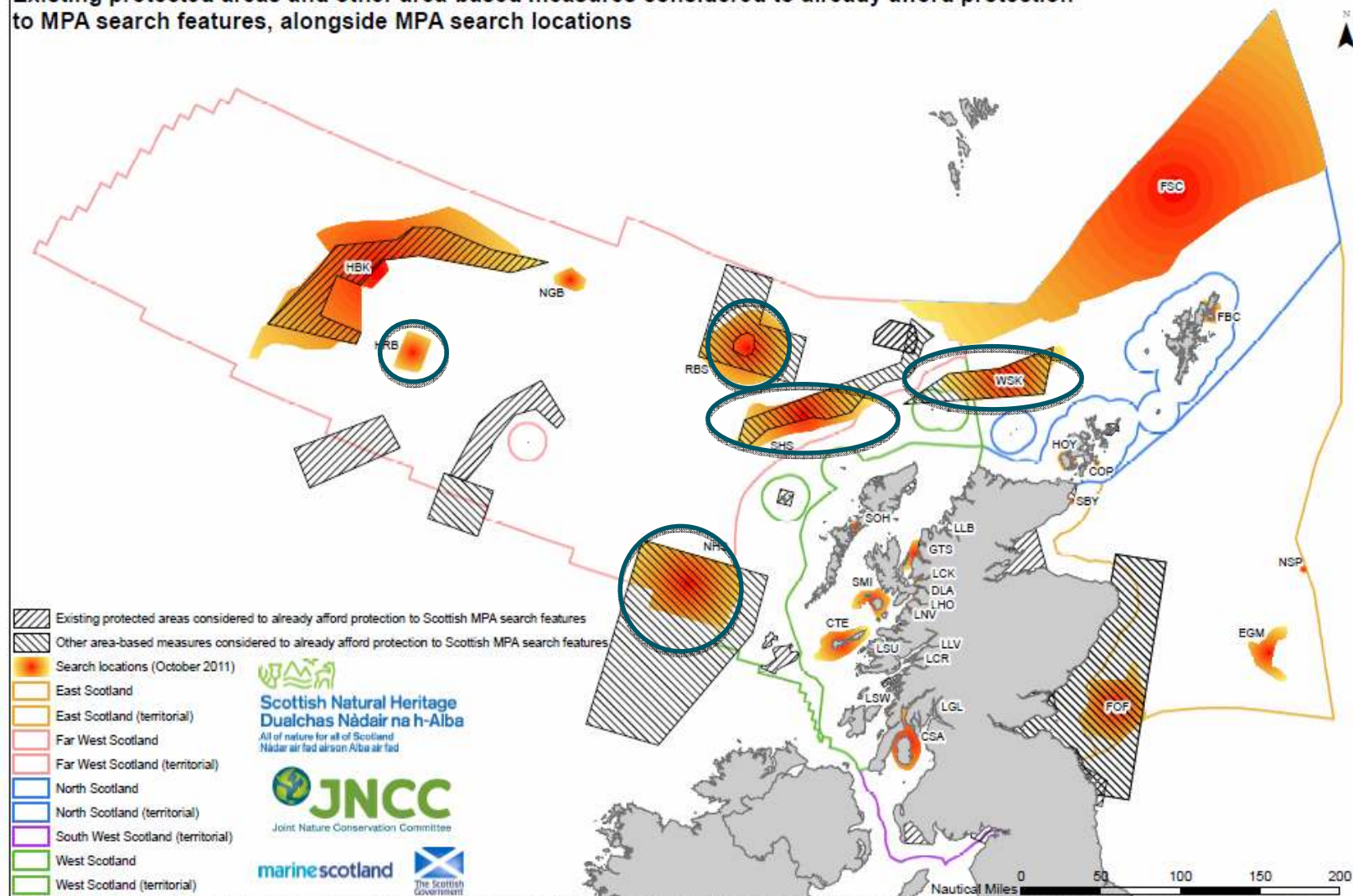
map projected in Europe Albers Equal Area Conic (Modified Standard Parallels - Standard Parallel 1 = 50.2; Standard Parallel 2 = 56.5). Insert maps projected in British National Grid. The exact limits of the UK Continental Shelf are set out in orders made under section 1(7) of the Continental Shelf Act 1964 (© Crown Copyright). Land: World Vector Shoreline © US Defense Mapping Agency. NOT TO BE USED FOR NAVIGATION. Map copyright JNCC 2011. OCA 28.09.11. Date published 28.09.2011

# LDMN and enhancing other area based measures



Joint Nature Conservation Committee

Existing protected areas and other area-based measures considered to already afford protection to MPA search features, alongside MPA search locations



Map projected in Europe Albers Equal Area Conic (Modified Standard Parallels - Standard Parallel 1 = 50.2; Standard Parallel 2 = 58.5). The exact limits of the UK Continental Shelf are set out in orders made under section 1(7) of the Continental Shelf Act 1964 (© Crown Copyright), Landmass, World Vector Shoreline © US Defense Mapping Agency. NOT TO BE USED FOR NAVIGATION. Map copyright JNCC 2011, OCA 20.10.11. Date published 20.10.2011

# Sensitivity of features

- Feature resilience (recovery) and resistance (tolerance) to pressures
- Pressure examples:
  - Removal of habitat: e.g. cables & pipelines, oil and gas
  - Abrasion on and sub surface: e.g. bottom contact fishing, cables & pipelines
  - Removal of non-target species
- Sensitivity varies depending on the species
  - Vulnerable Marine Ecosystems e.g. Coral gardens

 **Management options**





# Full suite of possible MPAs

