

Shaping

Ecosystem Based Fisheries Management

together . . .

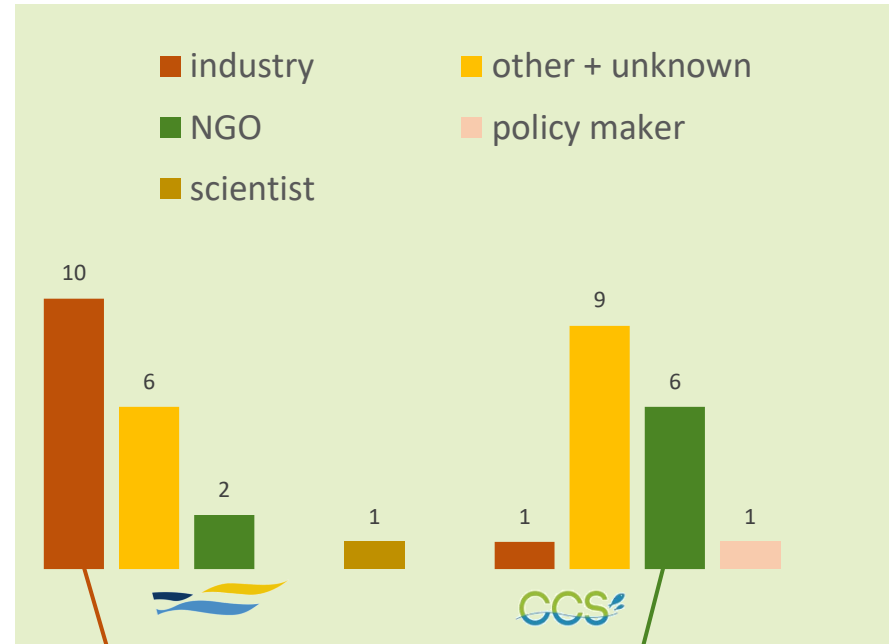
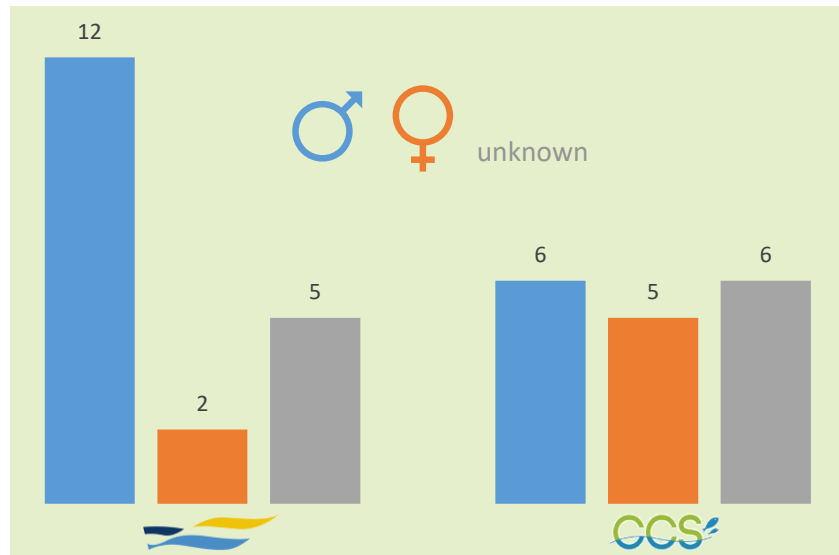
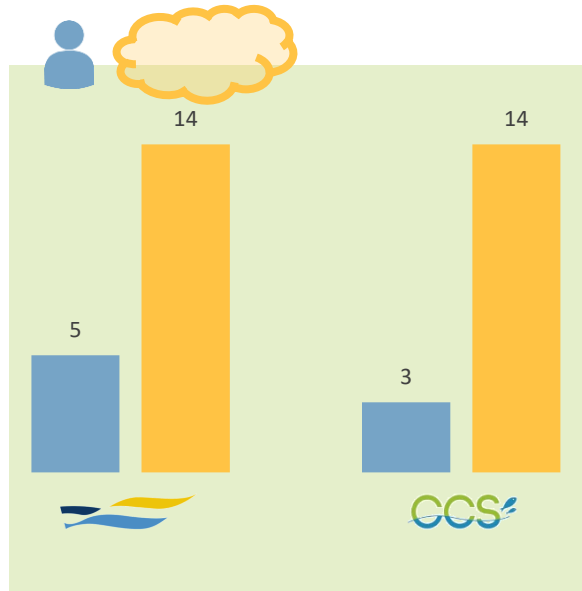


Feedback from the SEAWISE-NWWAC
scoping workshop on 27 January 2022

SEAWise has received funding from the European Union's Horizon 2020
research and innovation programme under grant agreement No 101000318

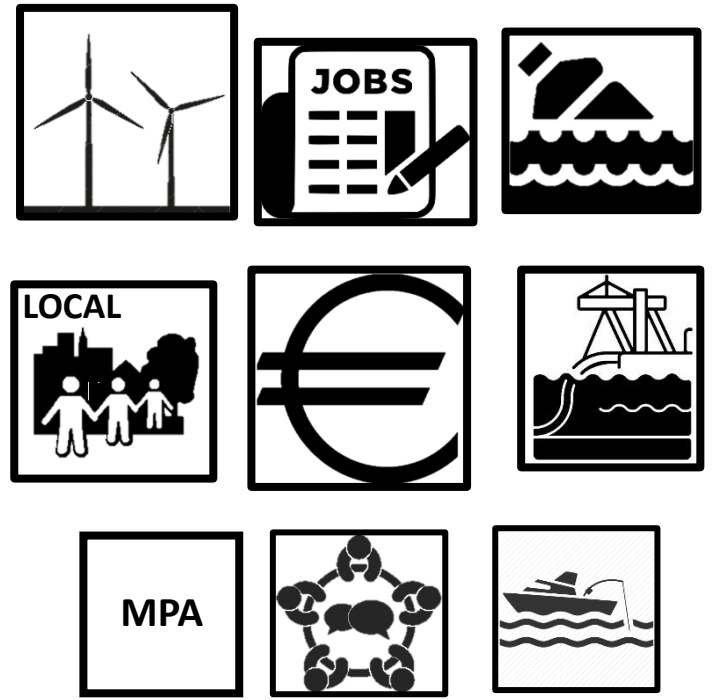
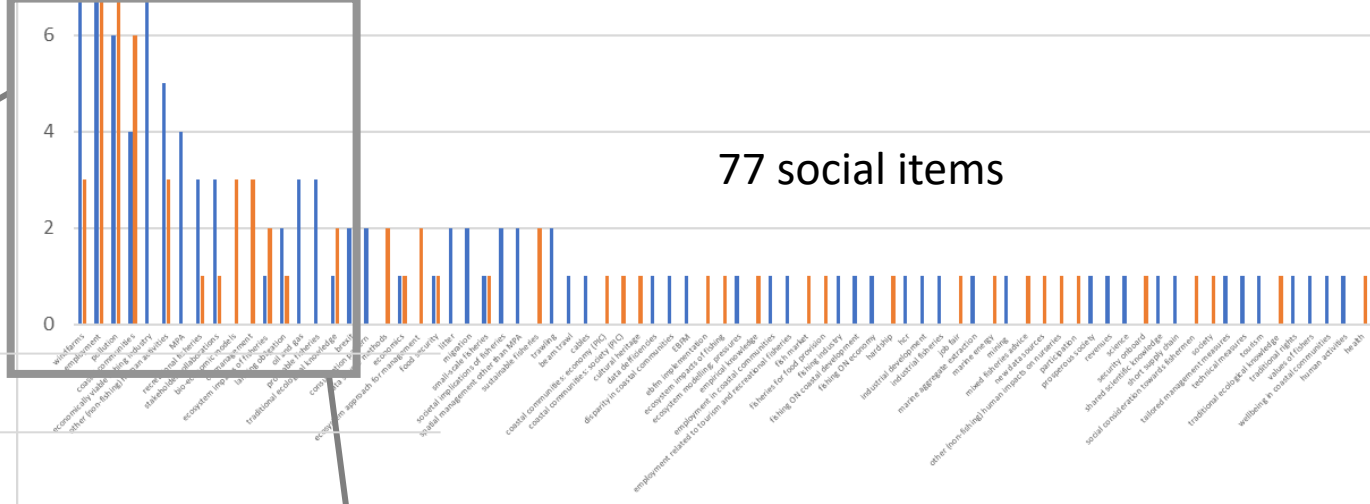
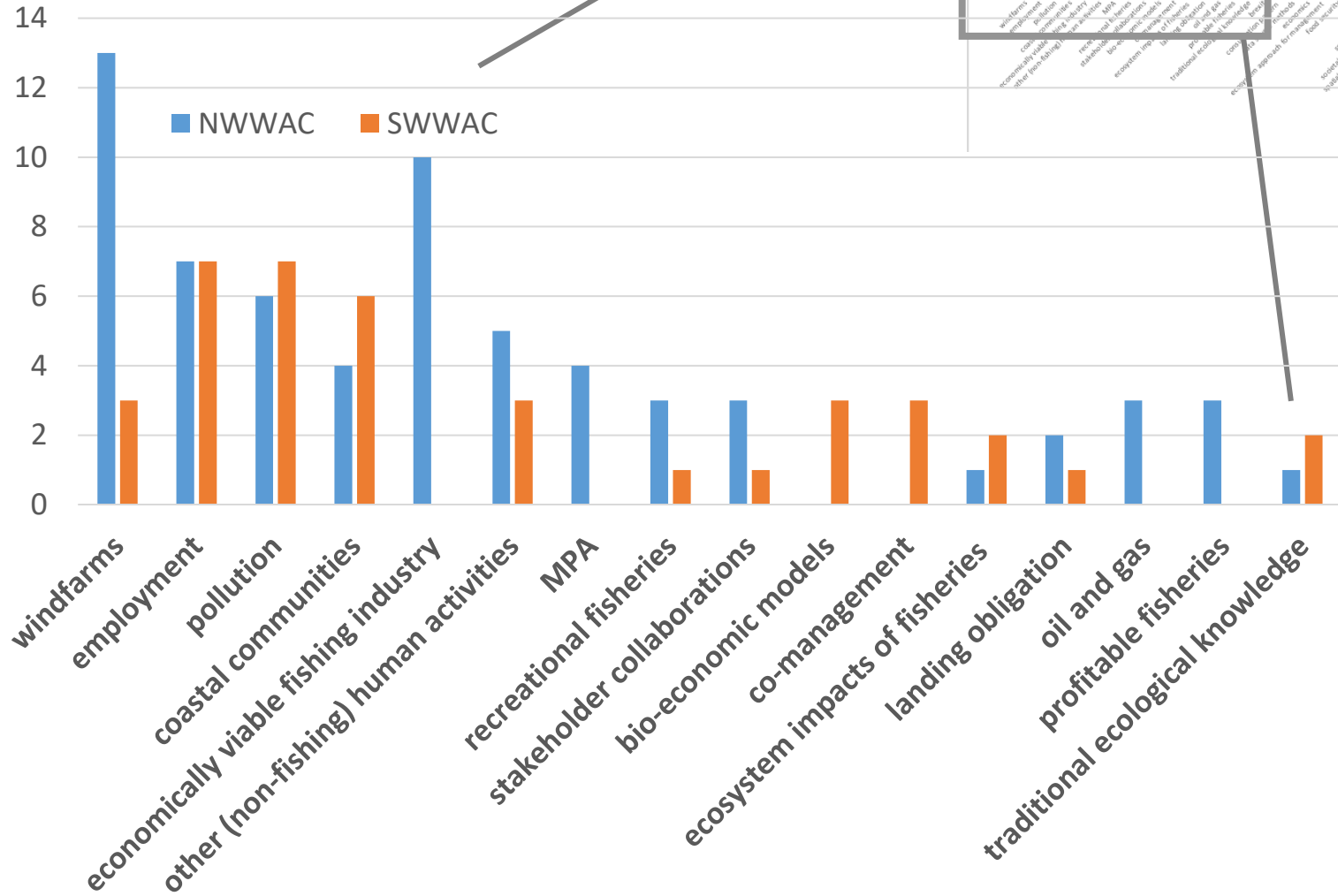


36 respondents in the WW

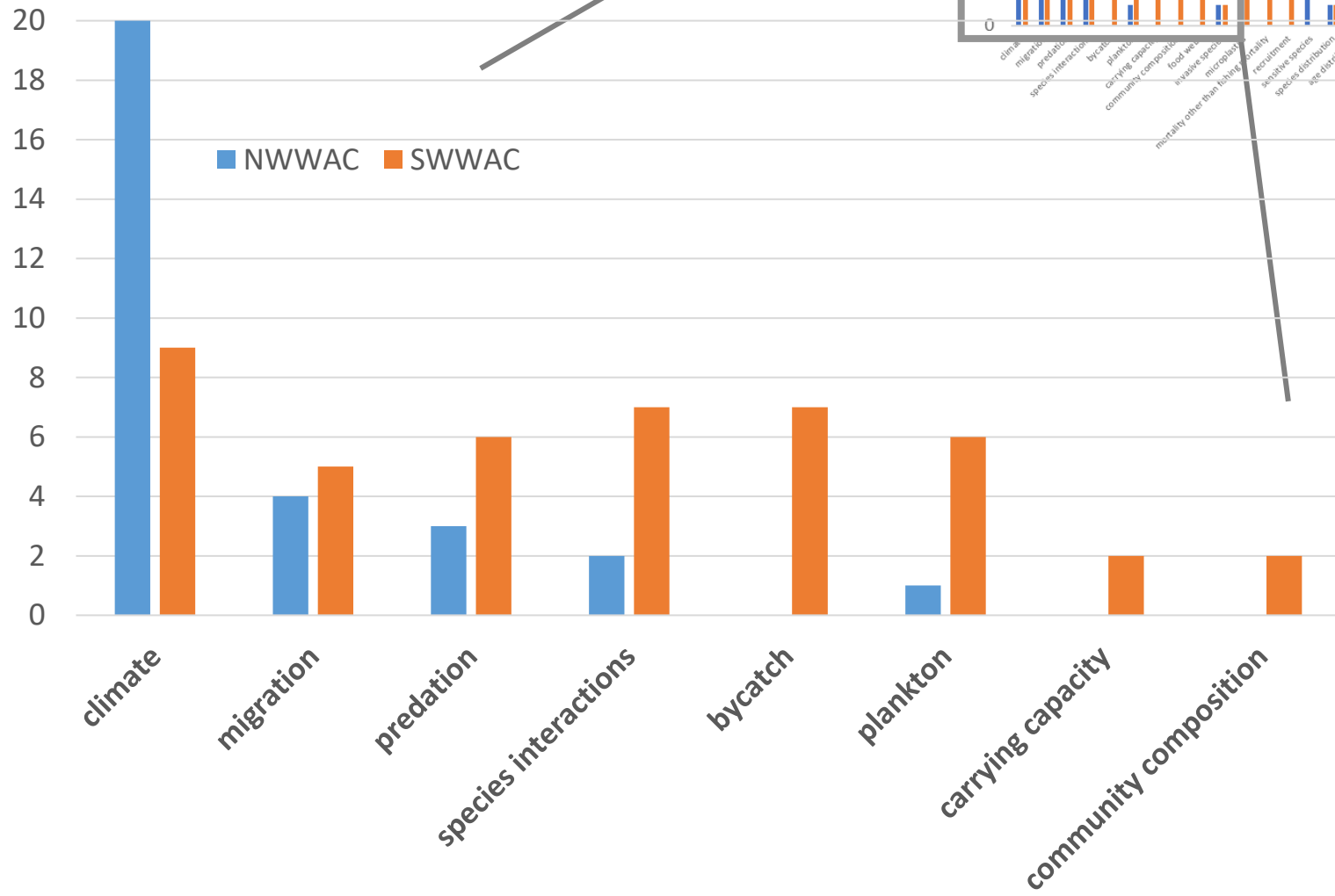


CCS

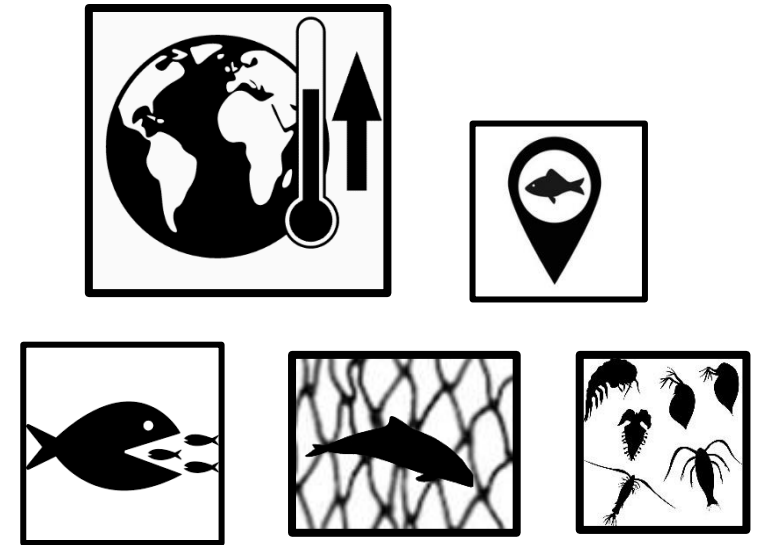
List of social items



List of ecological items



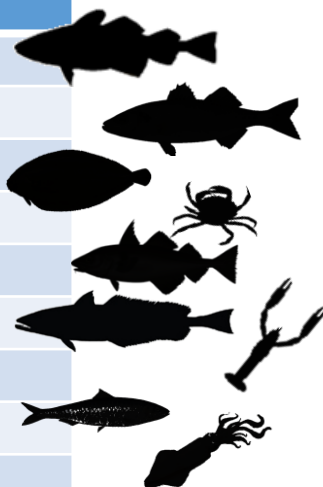
51 ecological items
excluding (non)commercial species



List of commercial and non-commercial species

Bold species: mentioned ≥ 4 times

TOP 20 SPECIES	NWWAC	SWWAC
cod	9	1
seabass	5	1
sole	4	2
crabs	2	2
haddock	4	
hake	1	3
Nephrops	3	1
sardine		4
squid	4	
elasmobranchs	2	1
octopus	1	2
shrimp	2	1
anchovy		2
flatfish	2	
gadoids	2	
monkfish	2	
pollack	2	
red mullet	2	
tuna		2



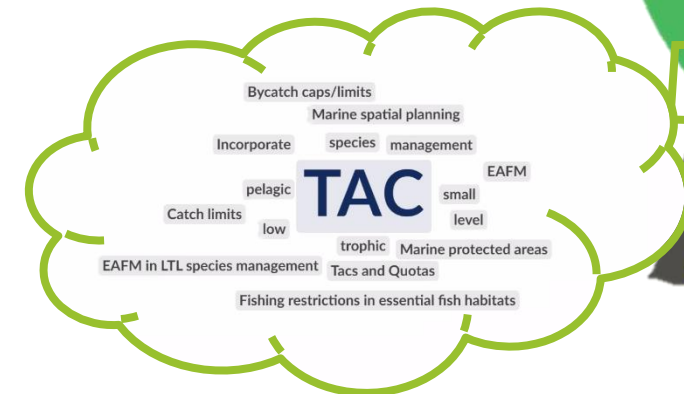
ALL SPECIES	NWWAC	SWWAC
	NWWAC	SWWAC
marine mammals	2	6
PET species	2	4
seabirds	3	3
benthos	1	3
sensitive species		4
cetacean	3	
plankton	3	
PET spp	1	1
sprat	2	
basking shark		1
elasmobranchs		1
fodder fish	1	
porbeagle shark		1
sandeel	1	
seamounts, canyons		1
turtles	1	



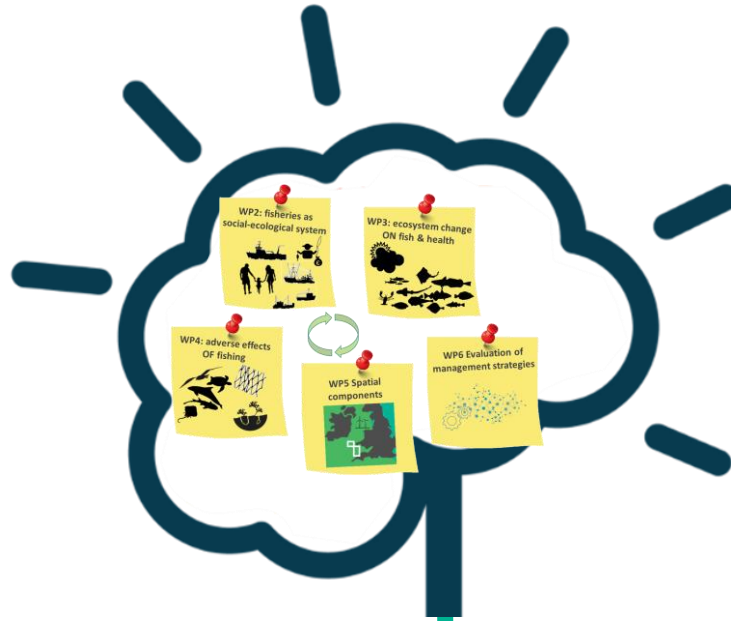
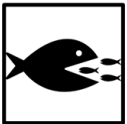
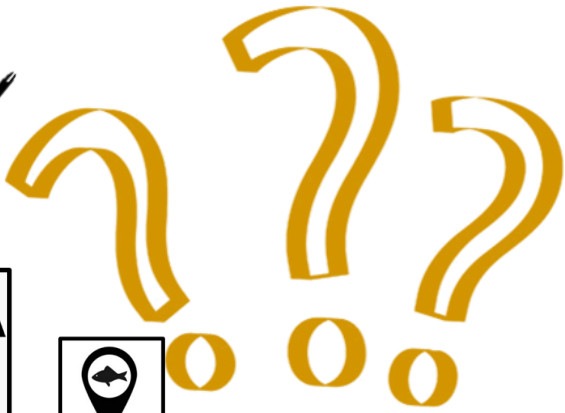
Which management measures are relevant?



	NWWAC	SWWAC
catch limits	4	4
technical measures	5	
MPA	1	2
EBFM for low trophic levels		2
Bycatch		1
co-management		1
competition for space and resources	1	
ecosystem indicator (F) to manage fishing		1
encourage fishing that benefits society the most: fair and sustainable		1
evaluation of established MPA ON fish stocks	1	
fishing: marine spatial planning between active and passive gears	1	
gear measures and incidental bycatch		1
healthy ecosystem	1	
humans as central actor based historical activities	1	
humans as central actor in maritime space	1	
marine spatial planning		1
other topics than landing obligation	1	
selective gear		1
spatial / temporal restrictions		1
tradeoff production and conservation: good practices of professionals + protection of the environment	1	
alternative gears		1

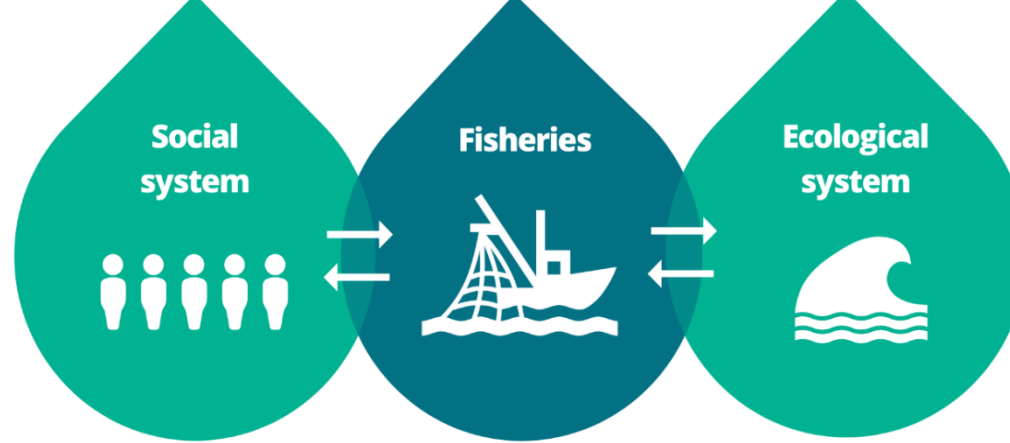


Which items will SEAWISE address?



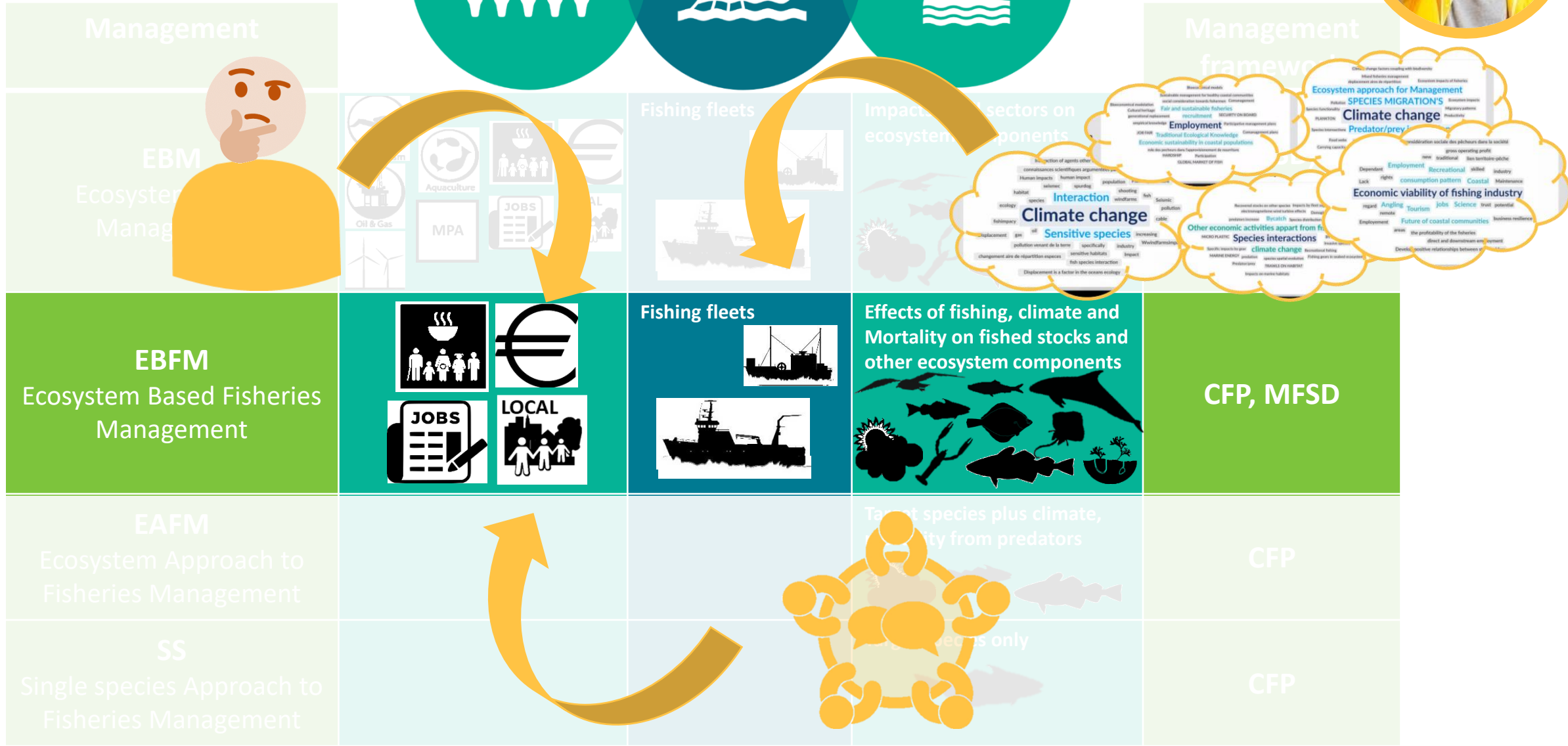
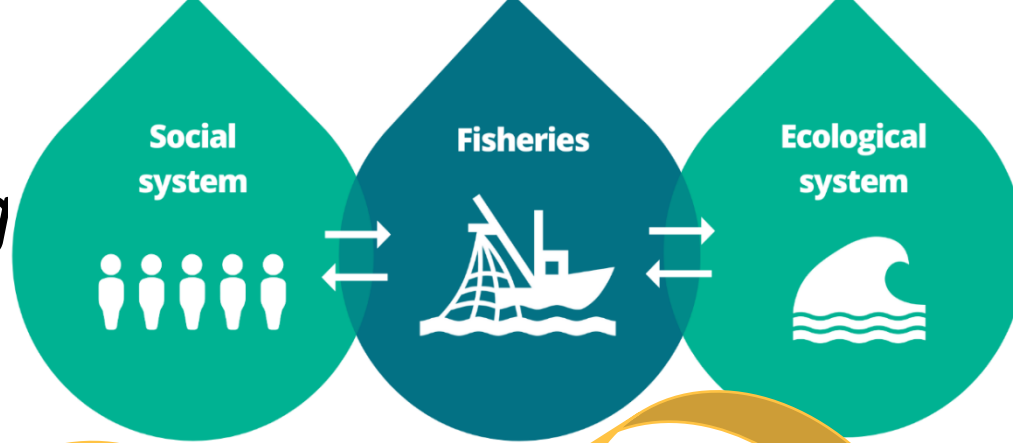
End-user
driven
advice

What is EBFM?

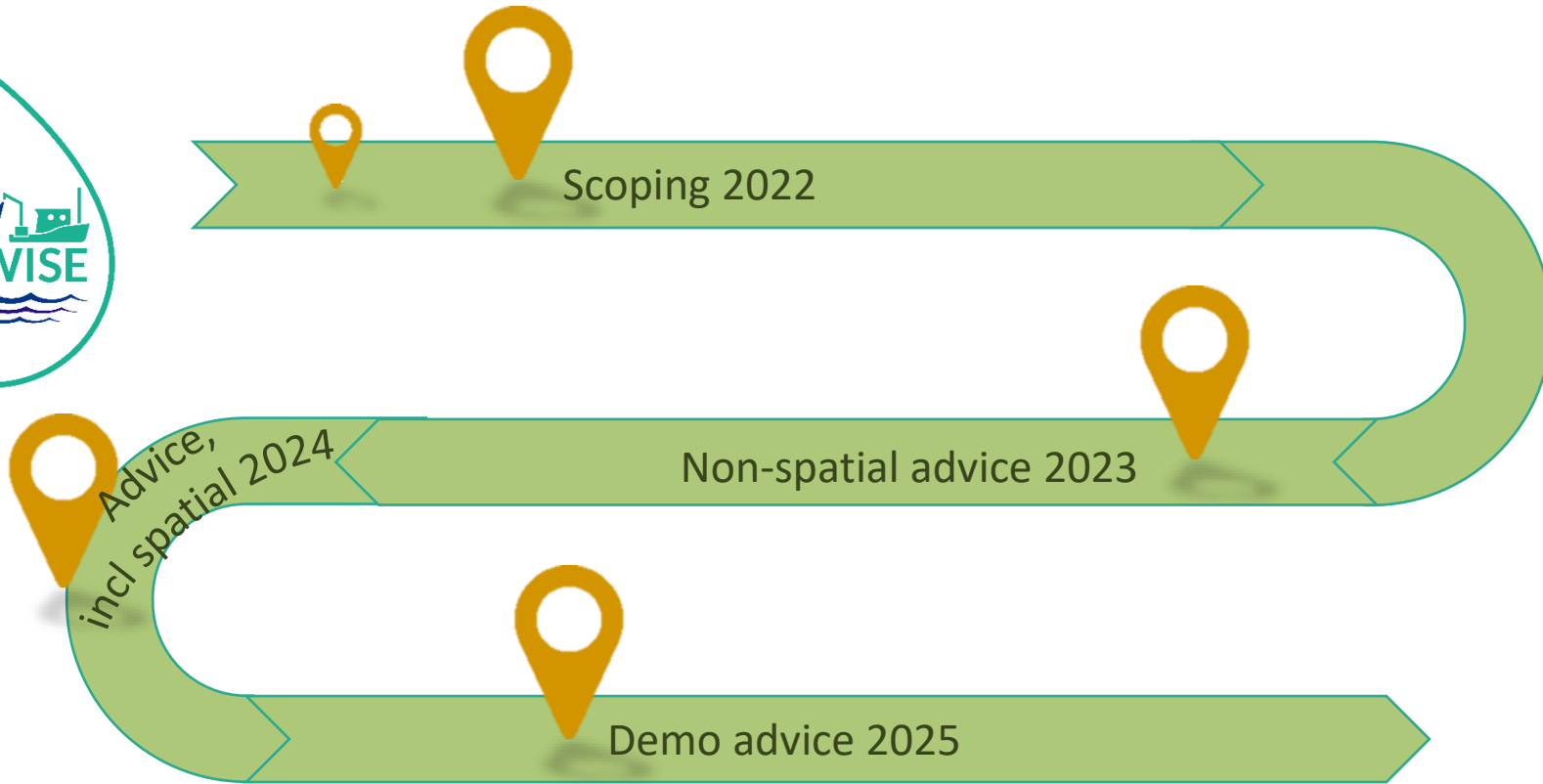


Management				Management framework
<p>EBM Ecosystem Based Management</p>		<p>Fishing fleets</p>	<p>Impacts of all sectors on ecosystem components</p>	<p>CFP, MFSD, HD, BD, WFD, MSPD etc.</p>
<p>EBFM Ecosystem Based Fisheries Management</p>		<p>Fishing fleets</p>	<p>Effects of fishing, climate and Mortality on fished stocks and other ecosystem components</p>	<p>CFP, MFSD</p>
<p>EAFM Ecosystem Approach to Fisheries Management</p>			<p>Target species plus climate, mortality from predators</p>	<p>CFP</p>
<p>SS Single species Approach to Fisheries Management</p>			<p>Target species only</p>	<p>CFP</p>

EBFM items are based on scoping



Next steps?



Thank you!



Contact us

Anna Rindorf (coordinator, DTU DK): ar@aquu.dtu.dk

Jochen Depestele (WW lead, ILVO BE): jochen.depestele@ilvo.vlaanderen.be

© Facebook Z39 Sophie

SEAWISE has received funding from the European Union's Horizon 2020 research and innovation programme under grant agreement No 101000318

