



Department  
for Environment  
Food & Rural Affairs

# **UK proposals for fisheries management measures in Haig Fras SAC**

Date: 2 February 2016

# Anticipated timeline

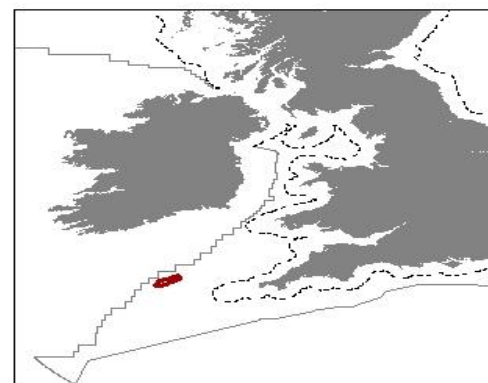
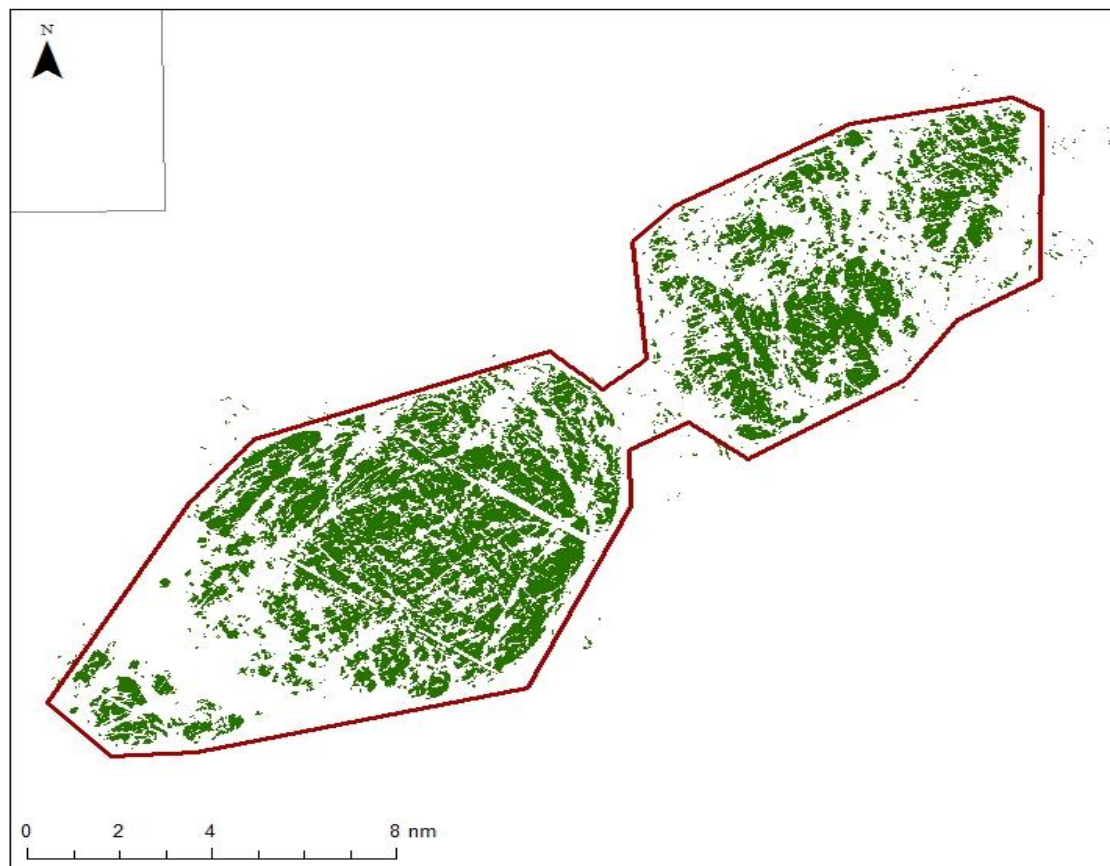
- Informal consultation with other Member States, NWWAC and other stakeholders (December/January - currently at this stage)
- Formal consultation stage – up to 6 months for Member States including consultation with Advisory Councils (March 2016)
- Submit to the Commission – September 2016



# UK approach

- Haig Fras SAC is an underwater granite rock outcrop sitting in the 'Western English Channel and Celtic Sea' regional sea
- Site approved as SCI by Commission in 2009 and a SAC in 2015
- Designated to protect Annex 1 reef habitat (1107)
- Stakeholder workshop on management measures in Rennes (November 2011) and Paris (October 2014). Further meeting in Bristol November 2015)
- Site boundary amendments submitted to Commission July 2015
- Fisheries management proposals developed taking account of stakeholder views and scientific advice (CEFAS)

# Site information



## Legend

-  Haig Fras SAC
-  Annex I Reef
-  Land
-  UK 12nm territorial seas limit
-  UK continental shelf

© JNCC 2016

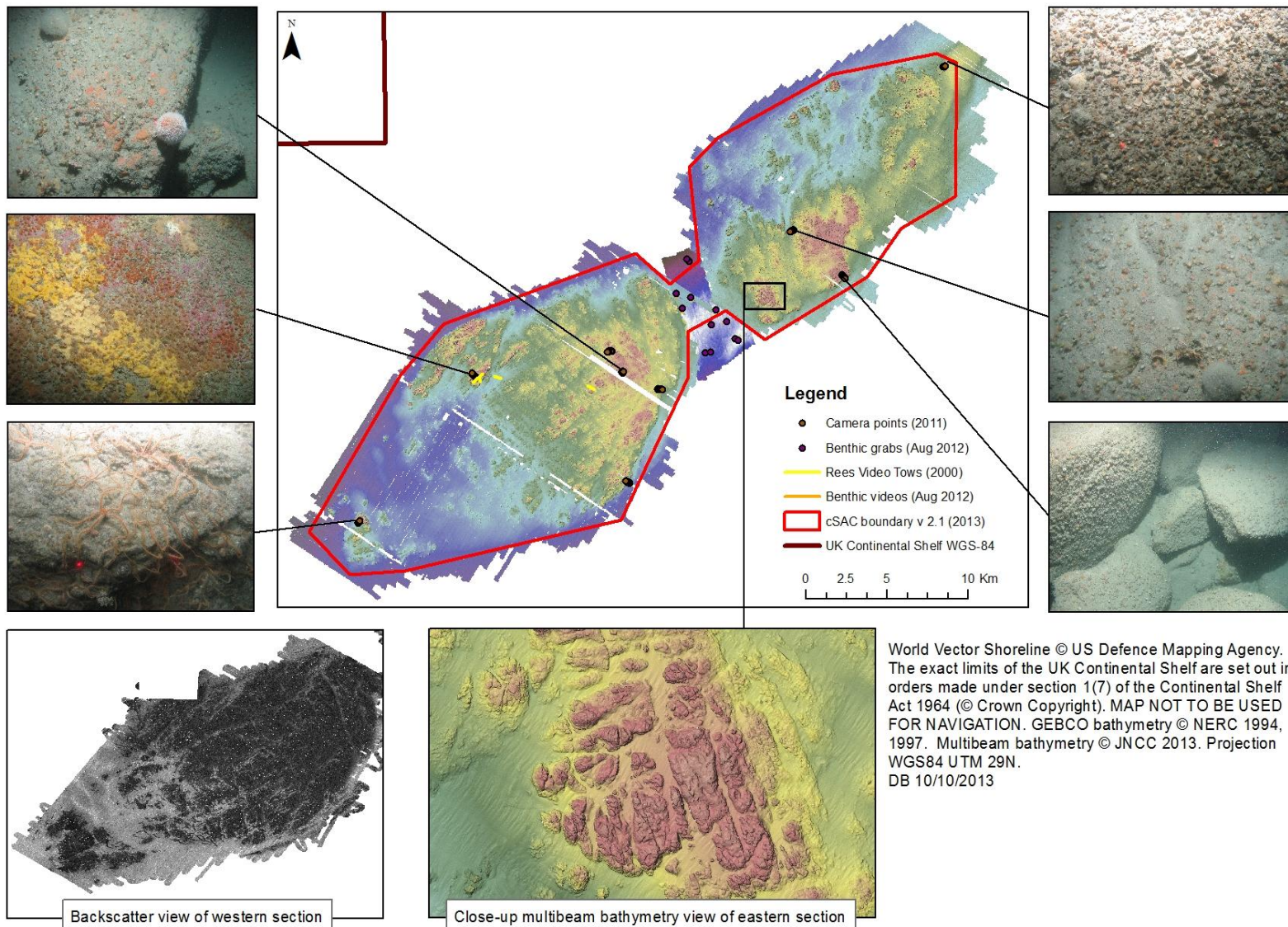
UK Territorial Sea Limit. Contains UKHO data © Crown copyright. All rights reserved. The exact limits of the UK Continental shelf are set out in orders made under section 1 (7) of the Continental Shelf Act 1964 and Continental Shelf (Designation of Areas) Order 2013. Combining source layers from UKHO. © Crown copyright © JNCC.

UK Exclusive Economic Zone © Crown copyright. The exact limits of the EEZ are set out in The Exclusive Economic Zone Order 2013.

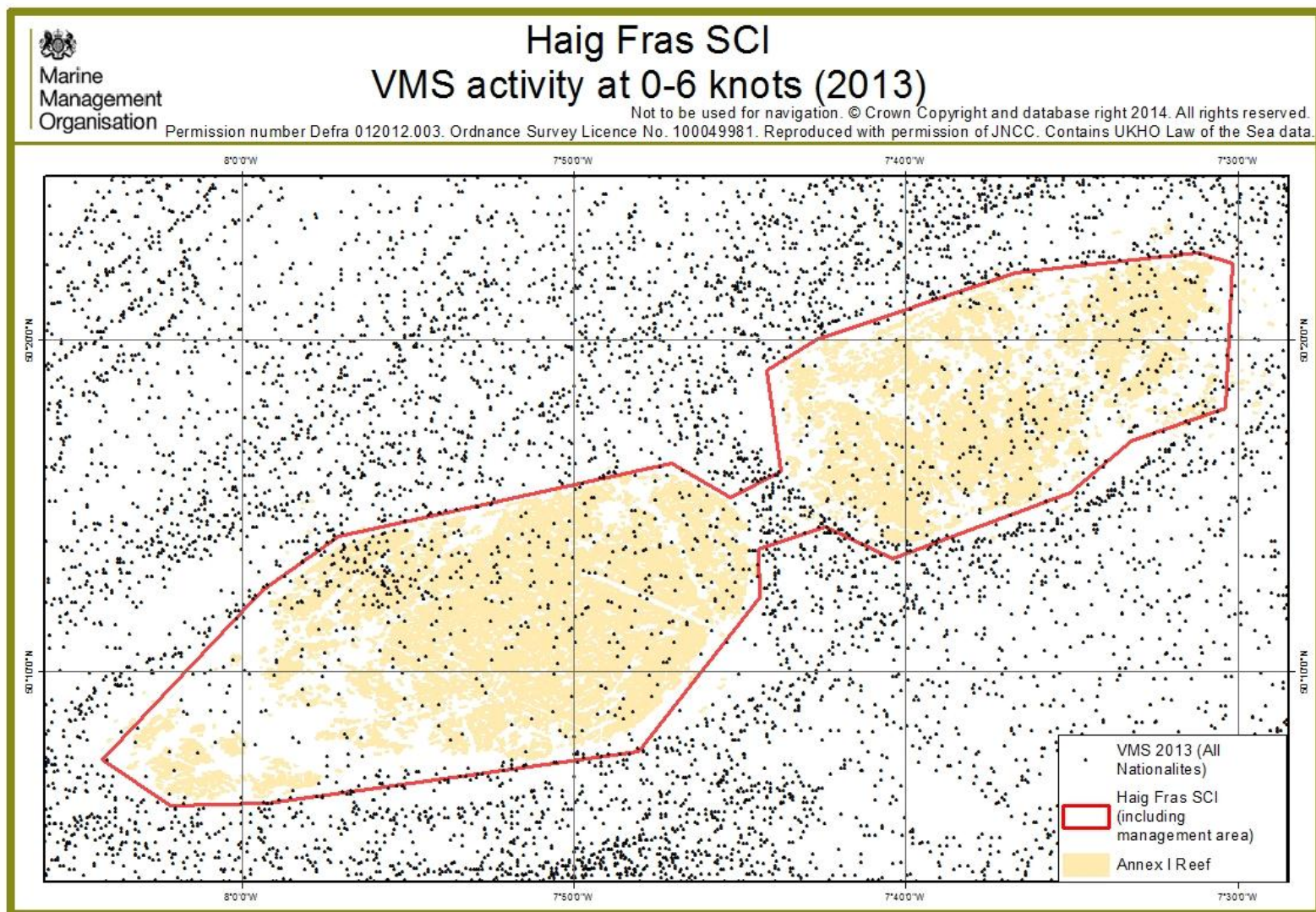
World Vector Shoreline © US Defence Mapping Agency. Not to be used for navigation.



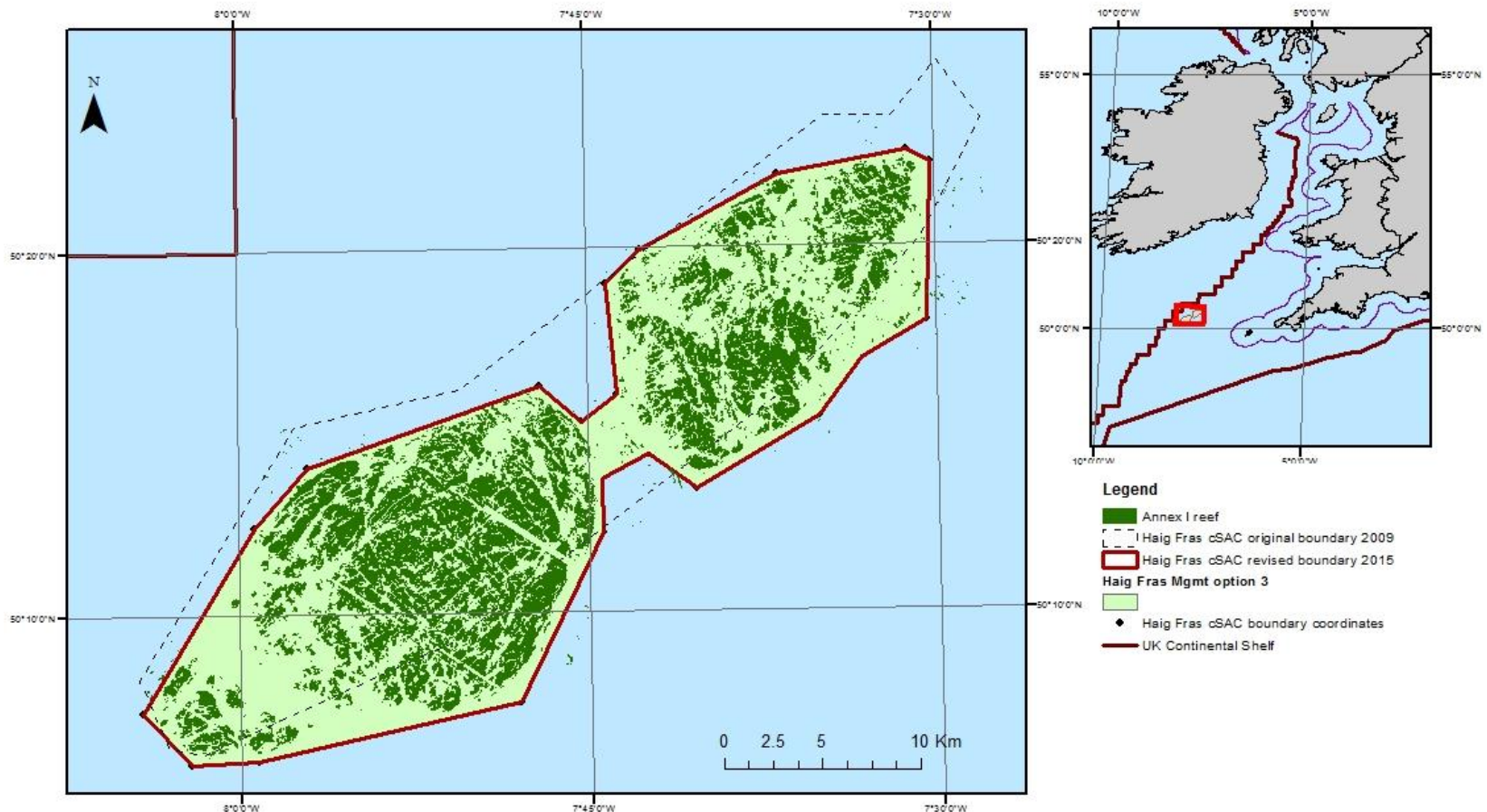
# Site information



# VMS activity 0-6 knots

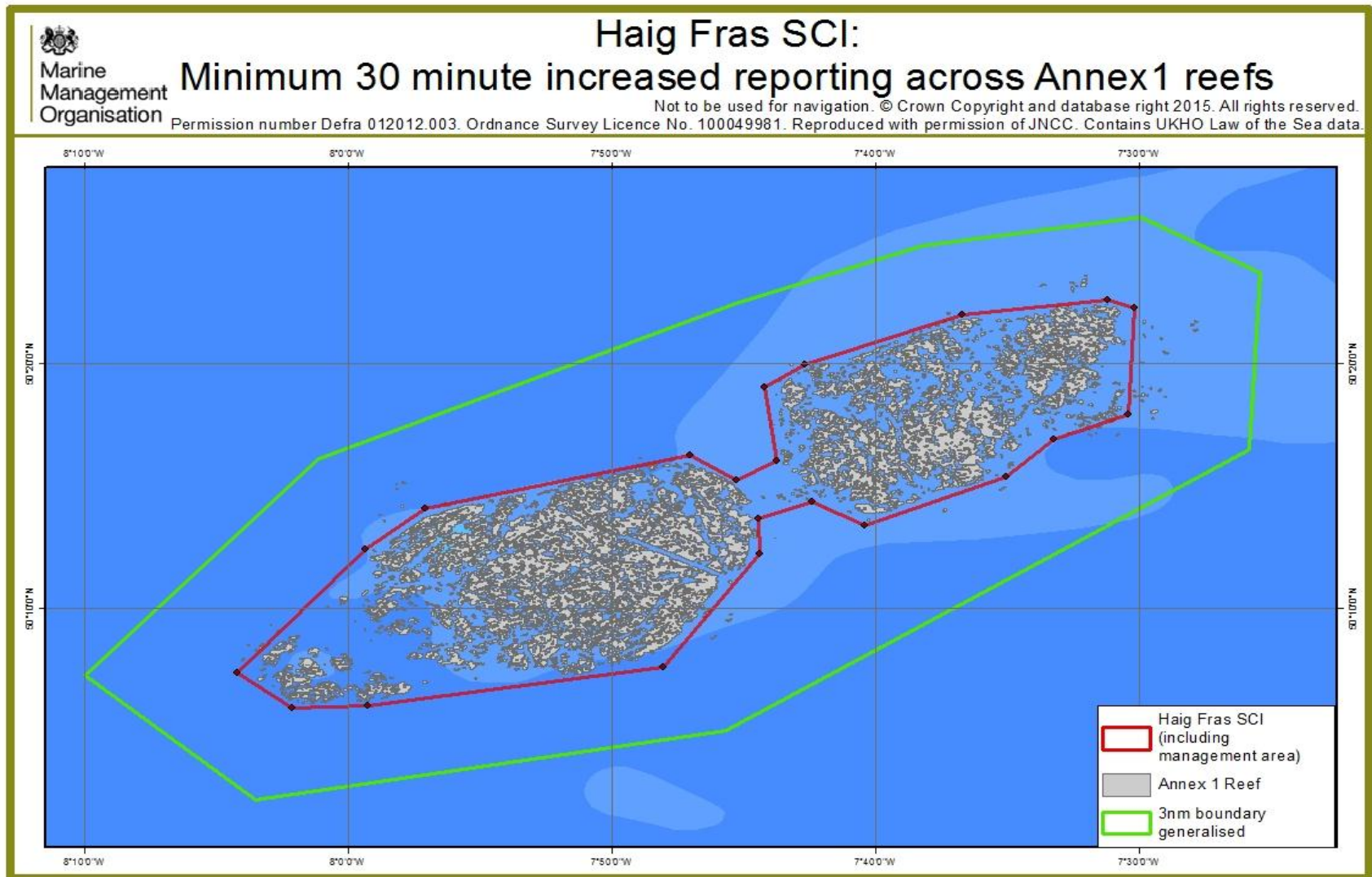


# Area to be closed to bottom contacting gear

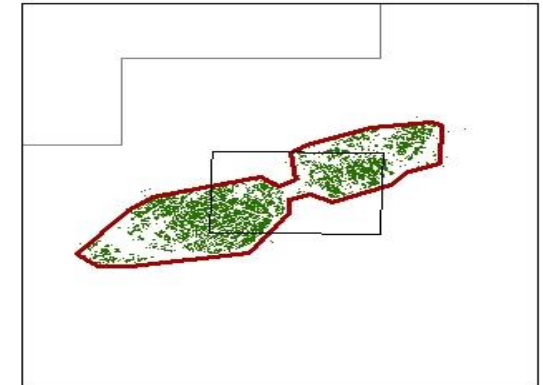


World Vector Shoreline © US Defence Mapping Agency. The exact limits of the UK Continental Shelf are set out in orders made under section 1(7) of the Continental Shelf Act 1964 (© Crown Copyright). MAP NOT TO BE USED FOR NAVIGATION. © JNCC 2015. Projection WGS84 UTM 29N.

# 30 minute increased reporting zone



# Annex 1 reef within the channels of Haig Fras SAC (more detail)



## Legend

- Haig Fras SAC
- Annex I Reef
- Land
- UK 12nm territorial seas limit
- UK continental shelf

© JNCC 2016

UK Territorial Sea Limit. Contains UKHO data © Crown copyright. All rights reserved. The exact limits of the UK Continental shelf are set out in orders made under section 1 (7) of the Continental Shelf Act 1964 and Continental Shelf (Designation of Areas) Order 2013. Combining source layers from UKHO. © Crown copyright © JNCC.  
UK Exclusive Economic Zone © Crown copyright. The exact limits of the EEZ are set out in The Exclusive Economic Zone Order 2013.  
World Vector Shoreline © US Defence Mapping Agency. Not to be used for navigation.

