

Management measures for Scottish MPAs in North Western Waters



marine scotland

Common Fisheries Policy

- Article 11 empowers Member States can propose fisheries management measures for sites designated under the Nature Directives and other sites identified as requirement to deliver the MPA aspects of the MSFD
- All measures under Article 11 need to be sufficiently robust as to meet EU environmental law obligations and the objectives of the CFP.
- These measures should include applying:
 - The precautionary principle
 - Avoiding the deterioration of natural habitats and the habitats of species as well as the disturbance of the species for which they have been designated
 - Establishing “necessary conservation measures” that will meet the ecological requirements of the protected habitats or species in a SAC
 - Establishing “spatial protection measures” that will contribute to a “coherent and representative network of MPAs”

Common Fisheries Policy

- The initiating Member State and other Member States with a direct management interest may submit a joint recommendation as referred to in Article 18(1) within 6 months from the provision of sufficient information.
- Under Article 18(2) Member States are obliged to consult Advisory Councils as part of this process
- If all Member States succeed in reaching an agreement on the measures, these are submitted to the Commission, who shall adopt the measures, within 3 months

Offshore MPAs in Scottish Waters

- 13 North Western Waters Sites
- 5 national MPAs and 8 SACs
- 4 considered well-managed
- Stanton Banks proposal – AC considered 2013
- 3 stakeholder workshops

Timeline (most hopeful prediction!)

2013 to march
2015

- JNCC advice on management requirements
- Stakeholder workshops

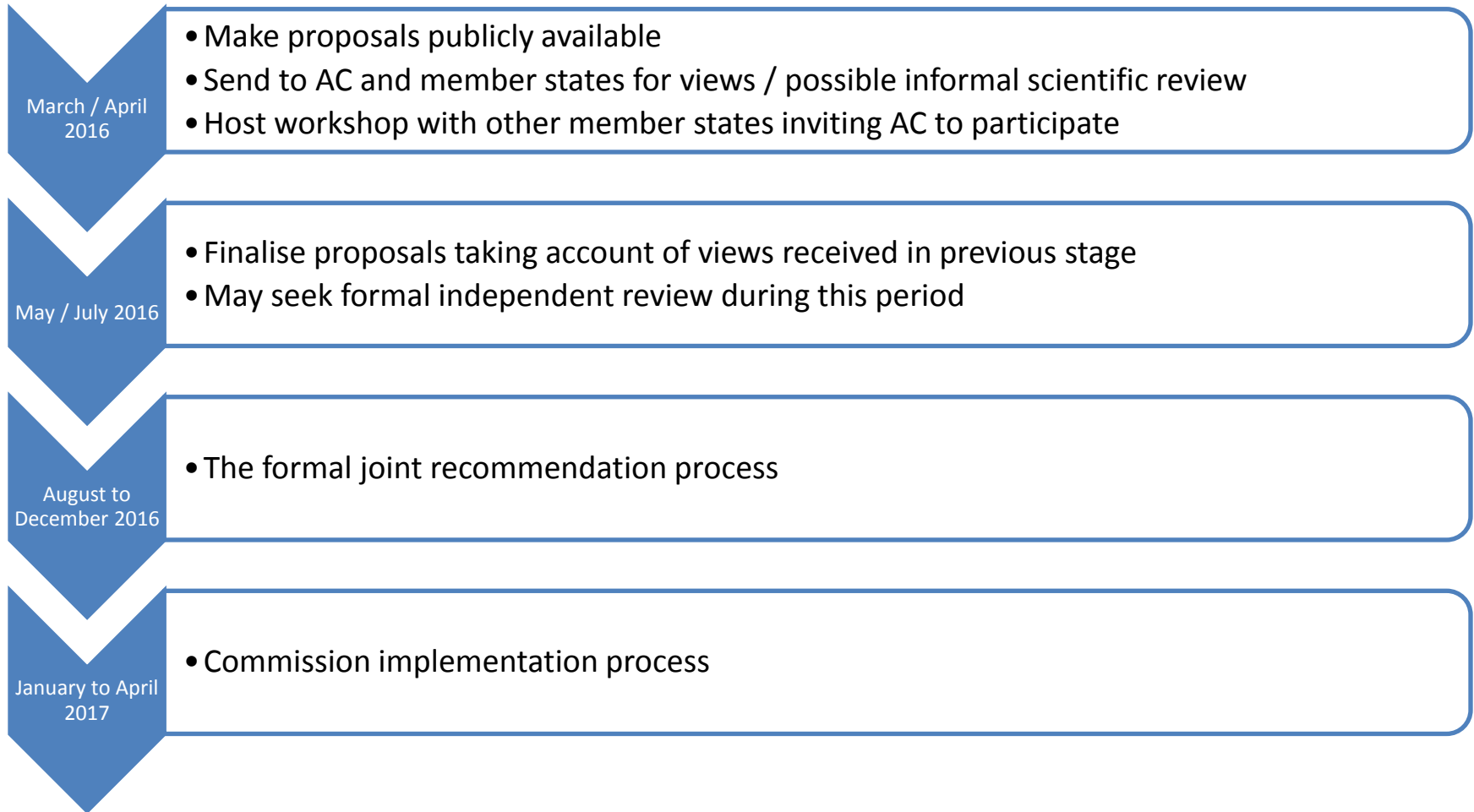
April 2015 to
December 2015

- Workshop actions / more detailed consideration
- Development of proposals
- Data call to other member states

January /
February 2016

- Complete drafting of proposals

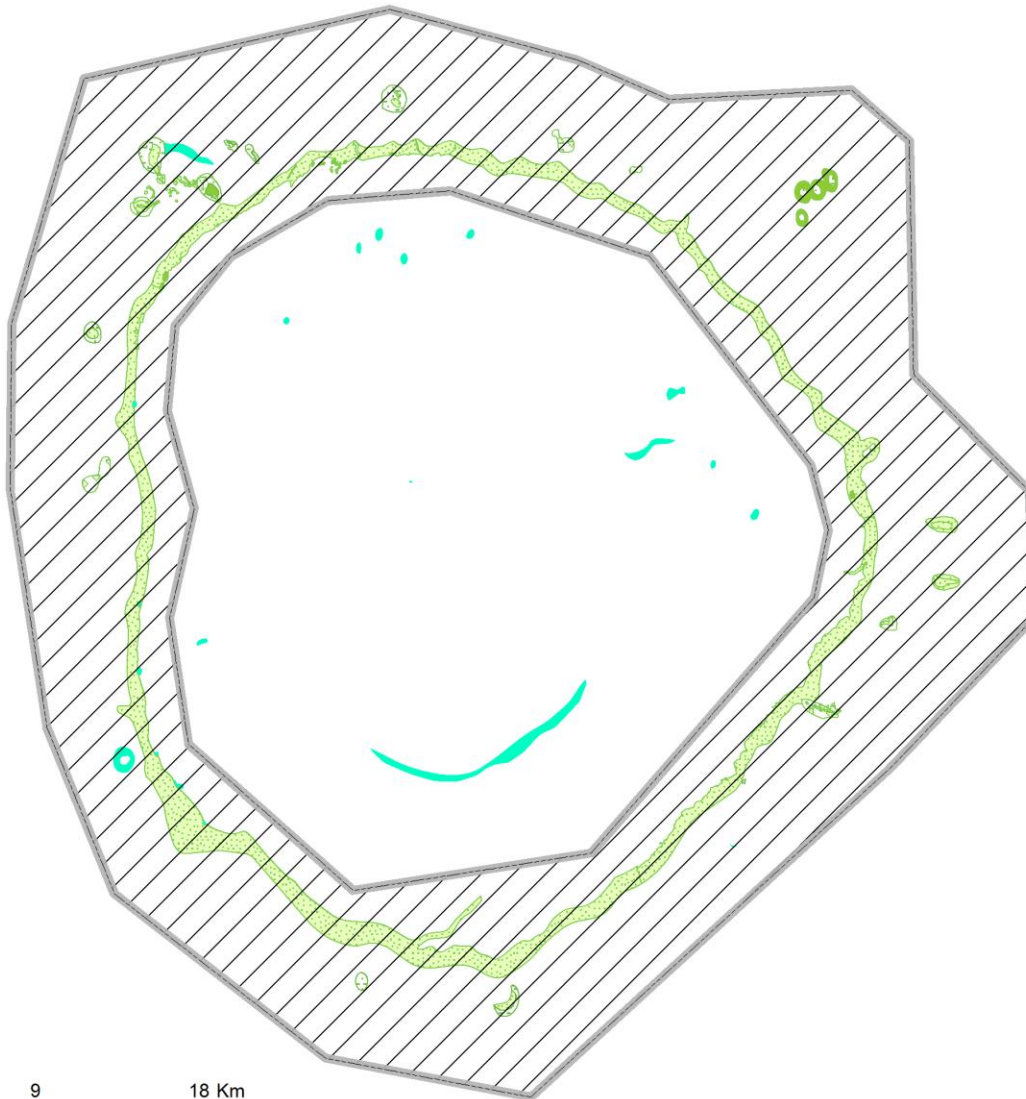
Timeline (most hopeful prediction!)



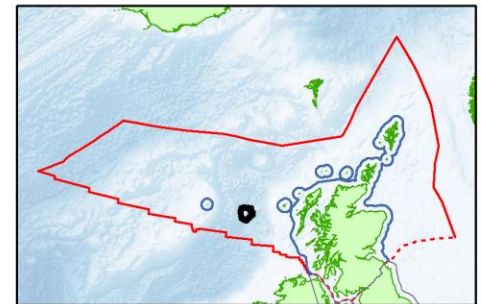
Offshore MPAs in Scottish Waters

- Principle of sustainable use for our MPAs
- Clarke et al “A scientific basis for regulating deep-sea fishing by depth”
- Concludes that trawling below 800m is unsustainable
- Casts serious doubt on the sustainability of fishing between 600 and 800m depth
- This has been a key consideration in the current proposals for MPAs with water deeper than this

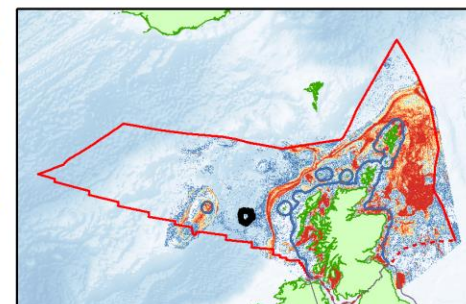
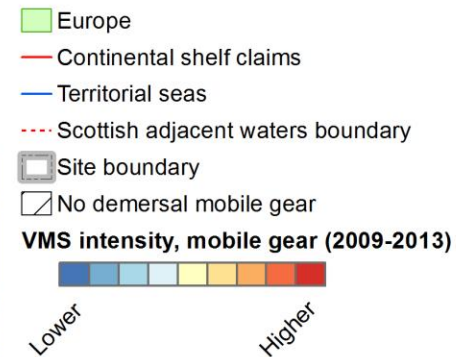
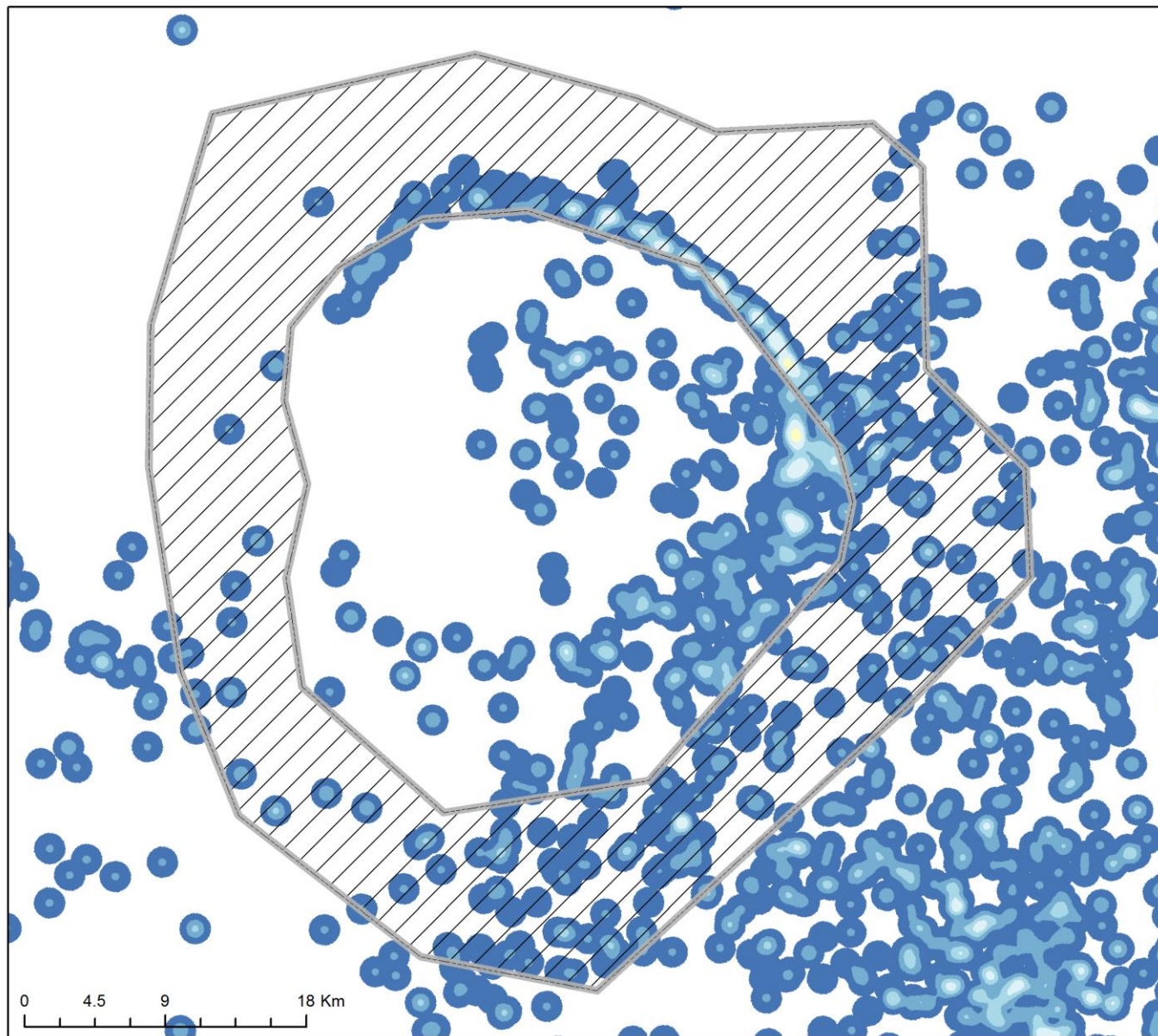
Anton Dohrn Seamount



- Europe
- Continental shelf claims
- Territorial seas
- Scottish adjacent waters boundary
- Site boundary
- Annex I Reef (v7.1)
- Subtype, Confidence
- Bedrock, High
- Bedrock, Potential
- Biogenic
- Stony, High
- Mixed
- No demersal mobile gear

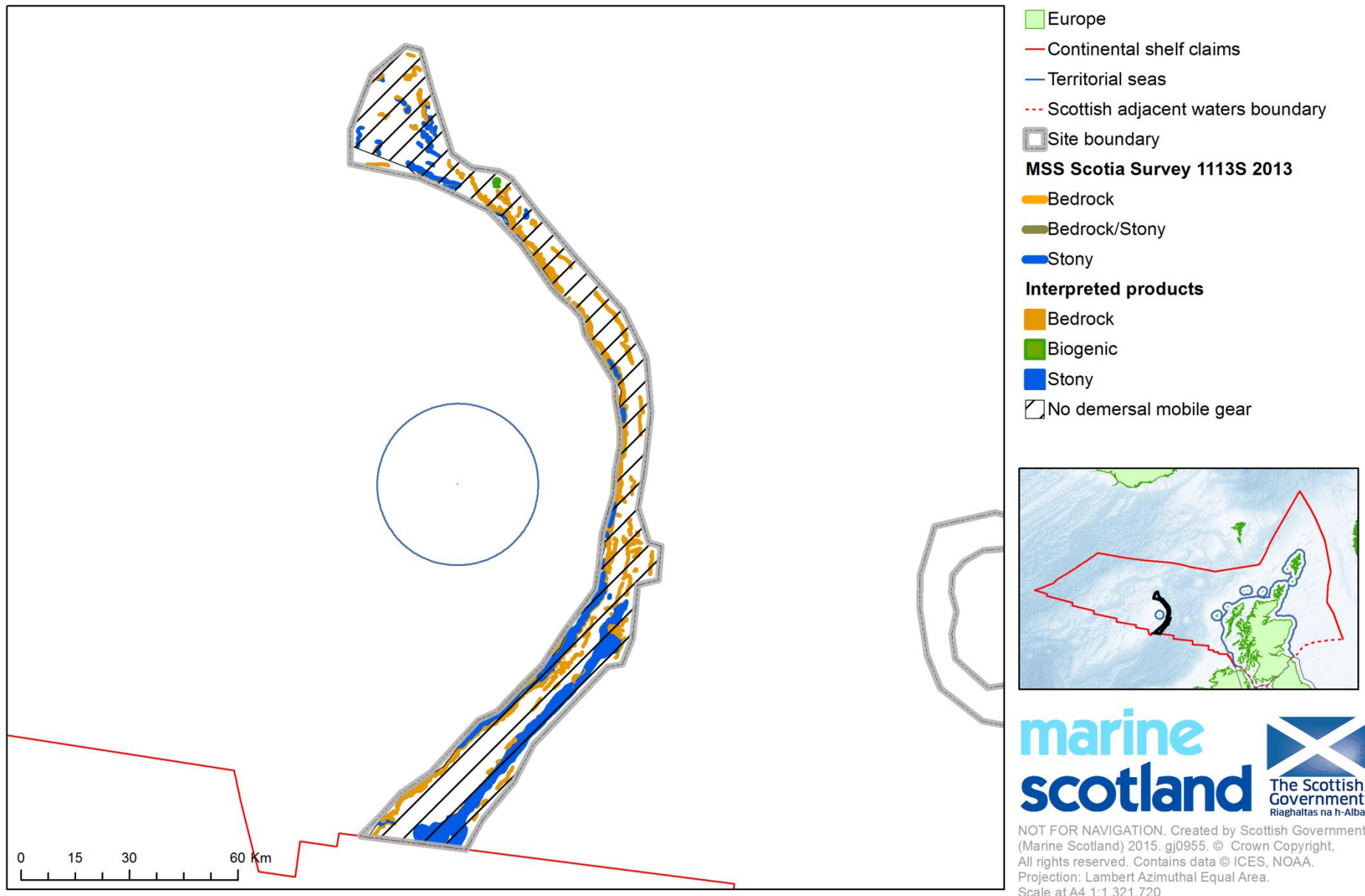


Anton Dohrn Seamount

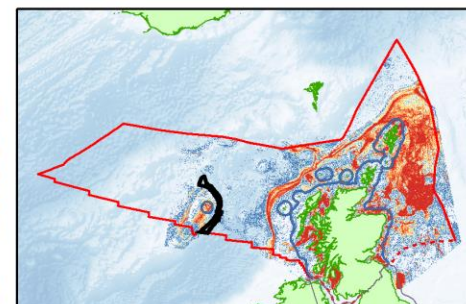
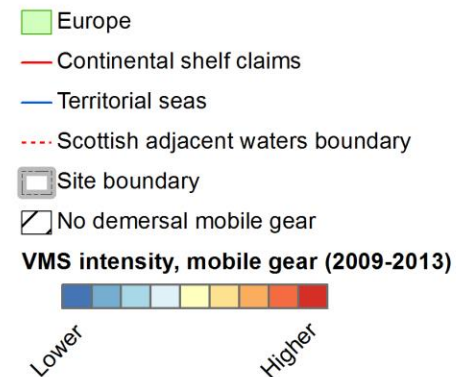
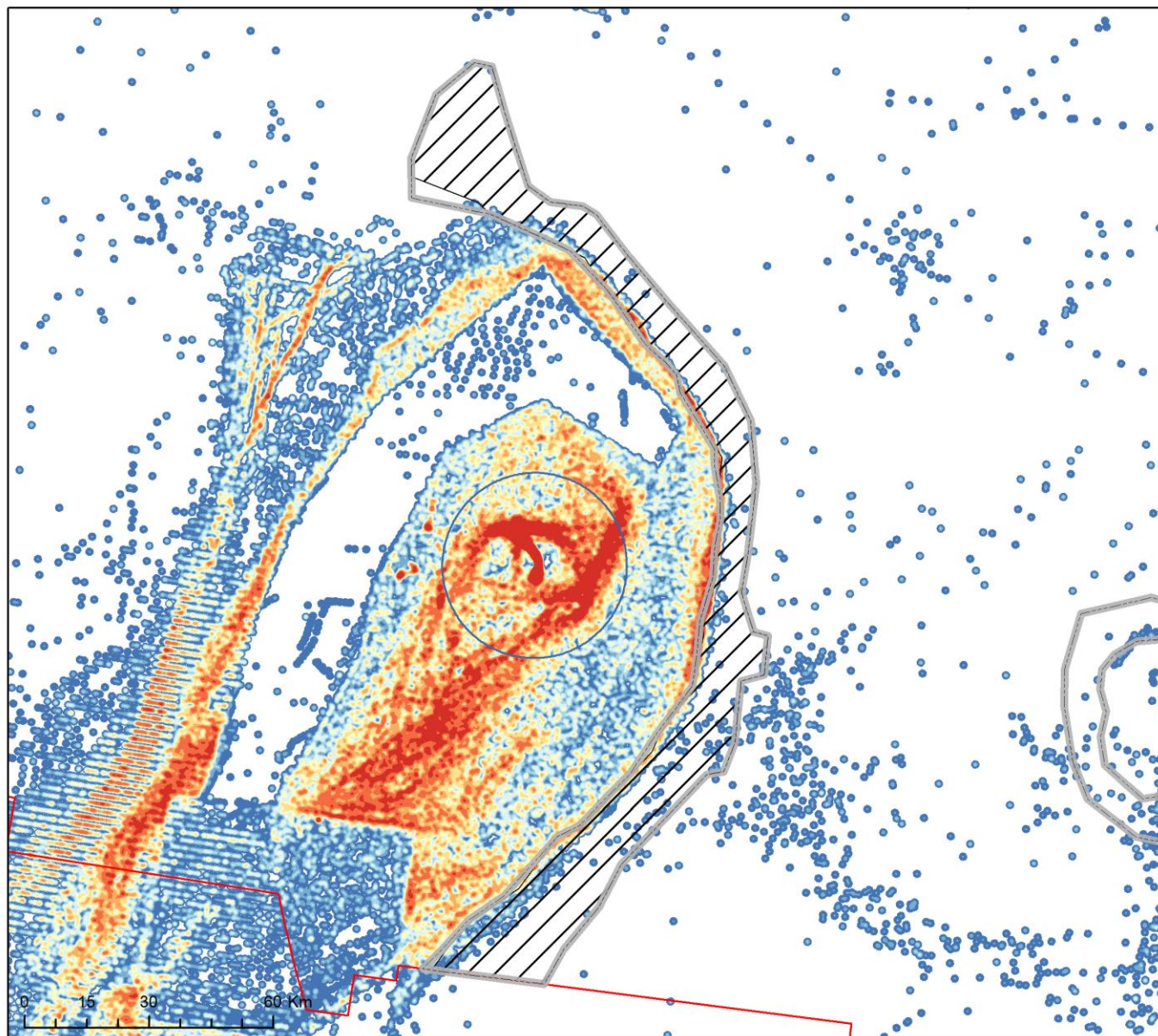


NOT FOR NAVIGATION. Created by Scottish Government (Marine Scotland) 2015. gj0955. © Crown Copyright, All rights reserved. Contains data © ICES, NOAA. Projection: Lambert Azimuthal Equal Area. Scale at A4 1:356,520

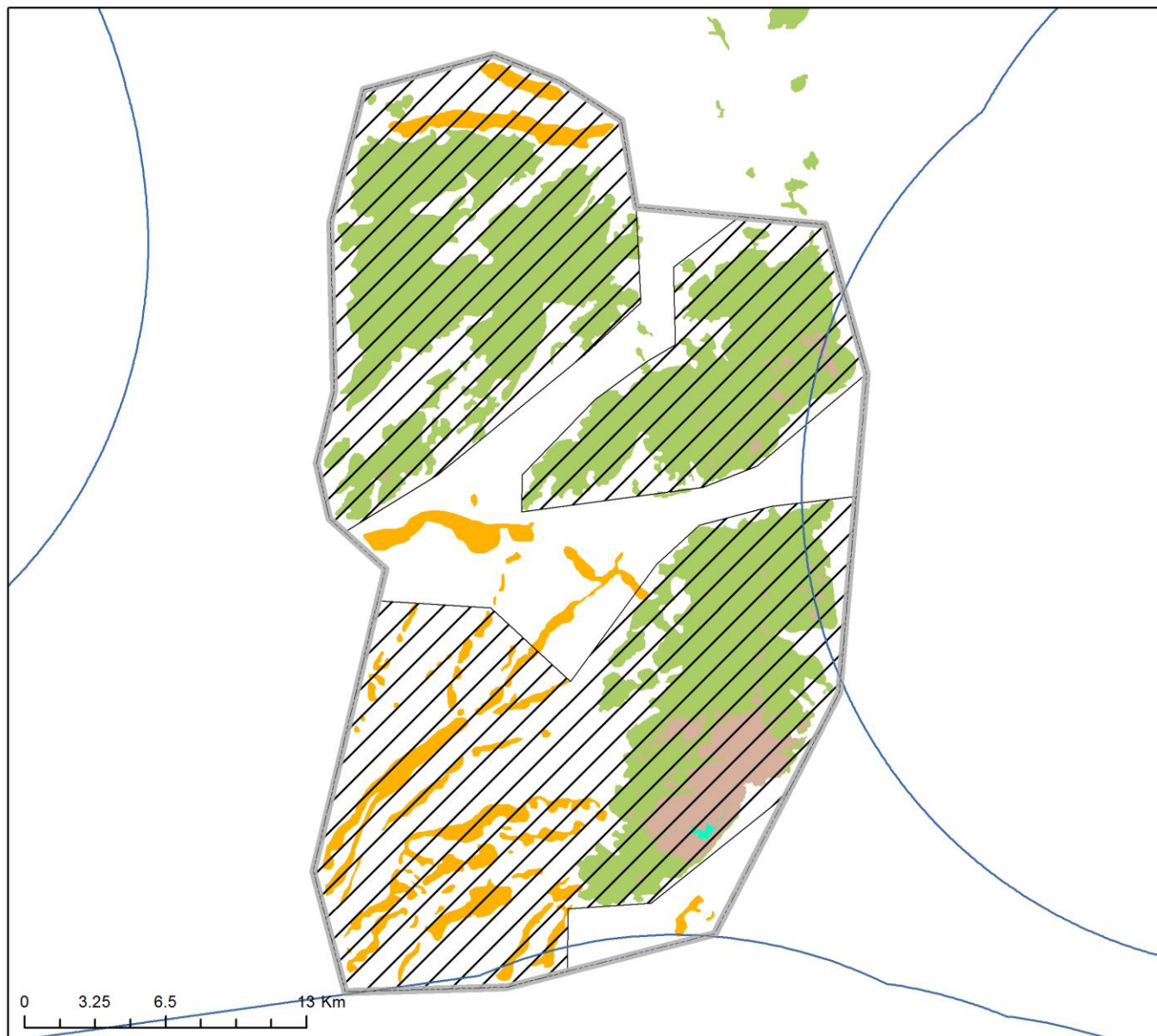
East Rockall Bank



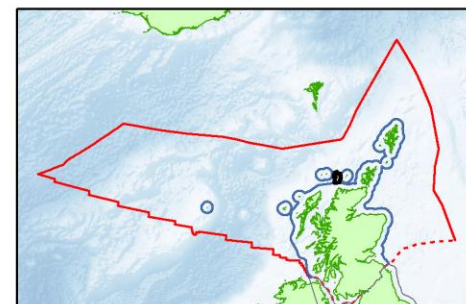
East Rockall Bank



Solan Bank Reef

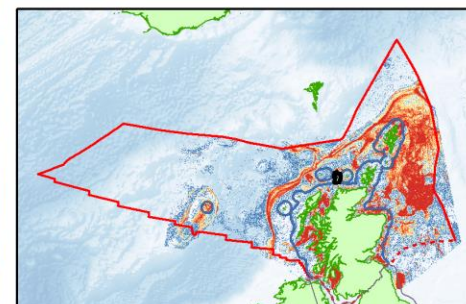
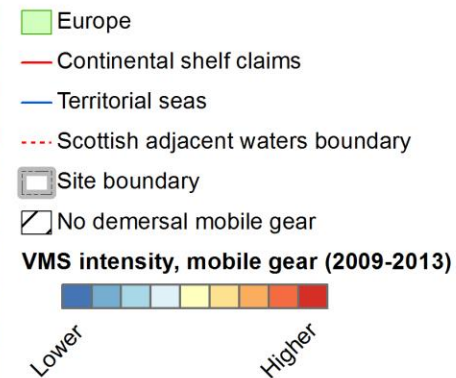
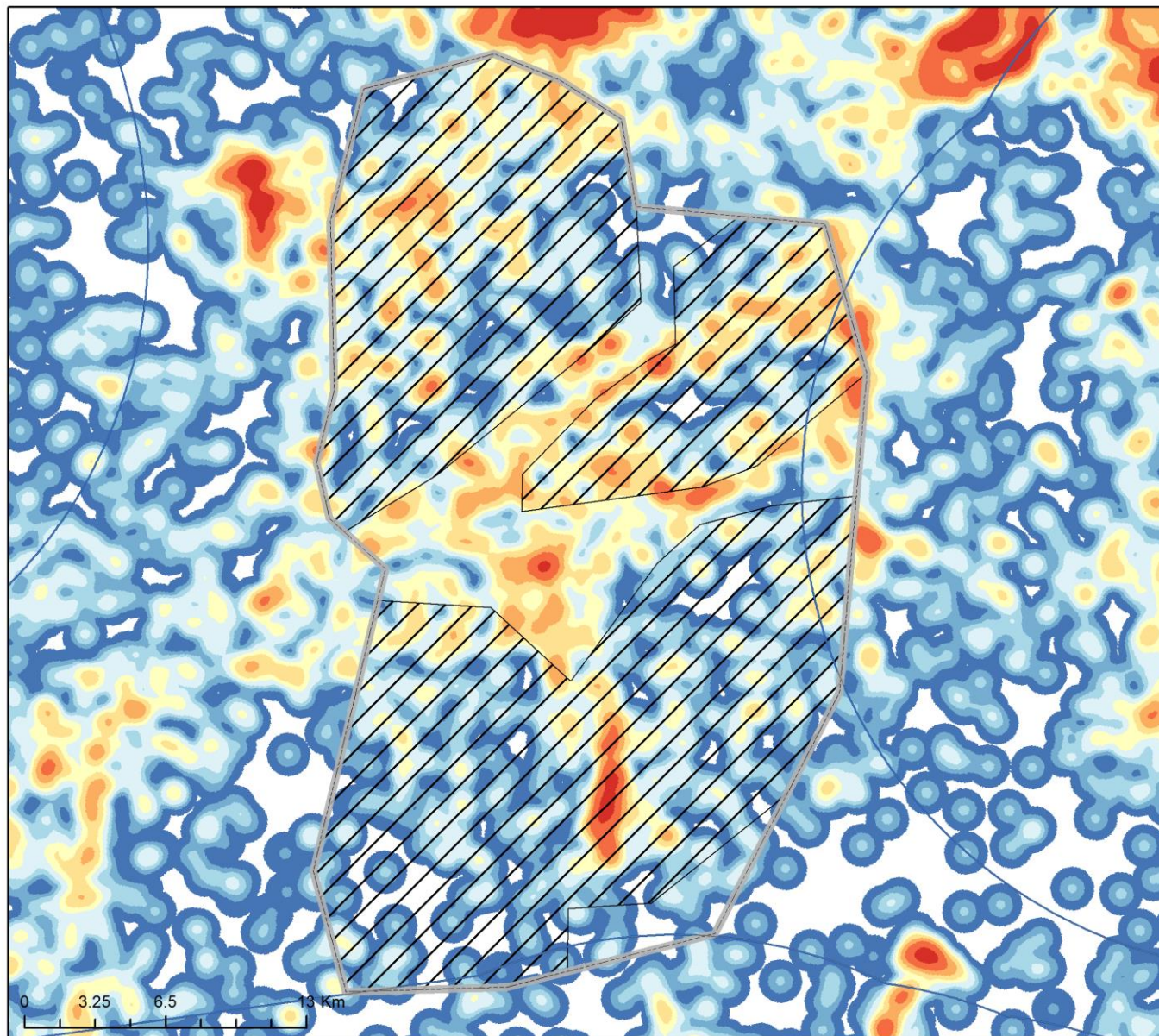


- Europe
- Continental shelf claims
- Territorial seas
- Scottish adjacent waters boundary
- Site boundary
- Infralittoral bedrock reef
- Shallow circalittoral bedrock reef
- Deep circalittoral bedrock reef
- Stony reef
- No demersal mobile gear

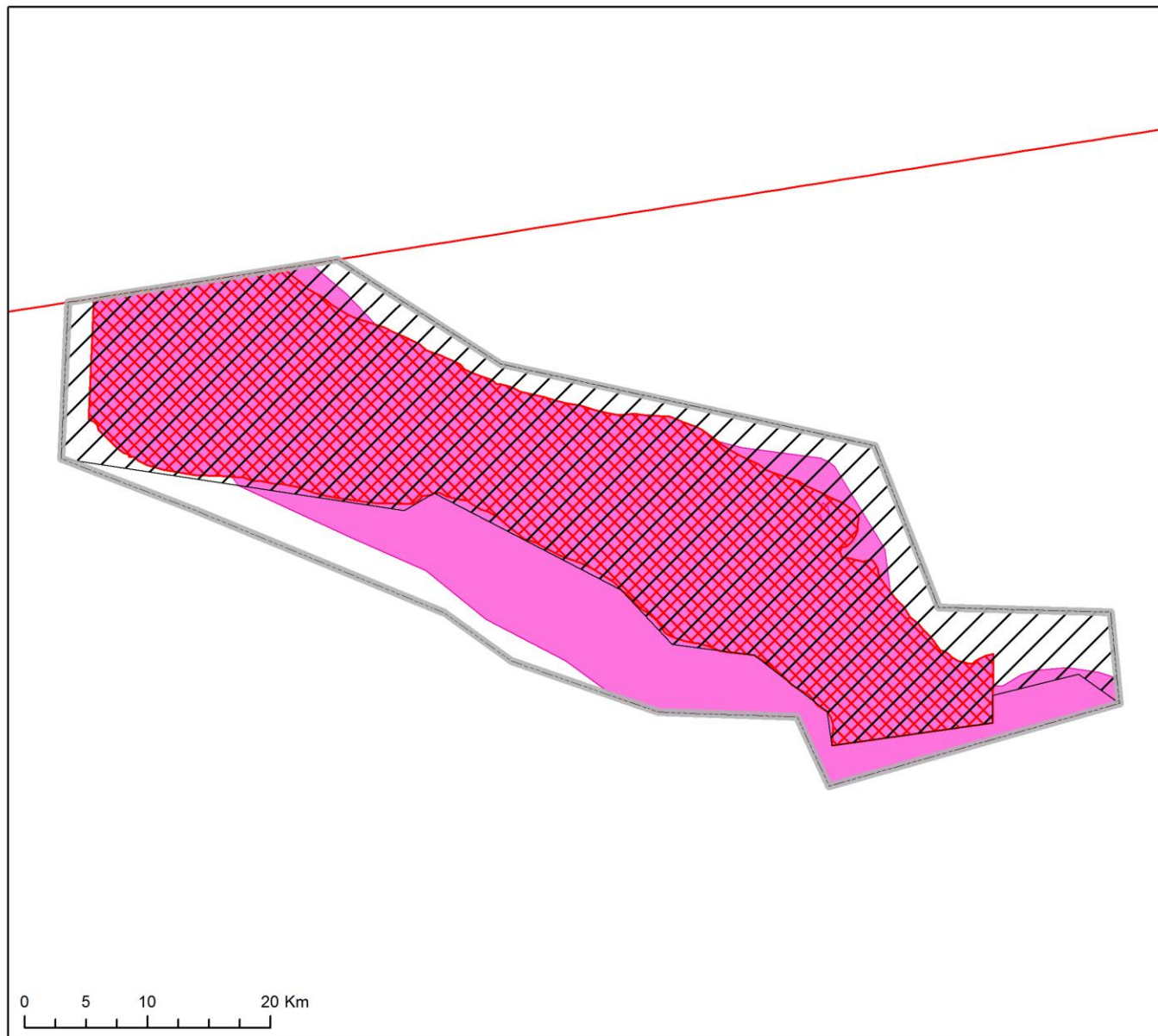


NOT FOR NAVIGATION. Created by Scottish Government (Marine Scotland) 2015. gj0955. © Crown Copyright, All rights reserved. Contains data © ICES, NOAA. Projection: Lambert Azimuthal Equal Area. Scale at A4 1:257,260

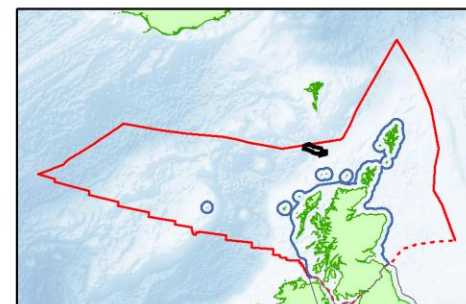
Solan Bank Reef



Wyville Thomson Ridge

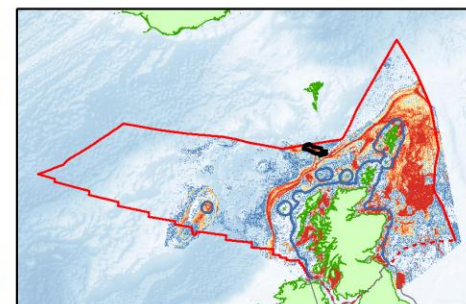
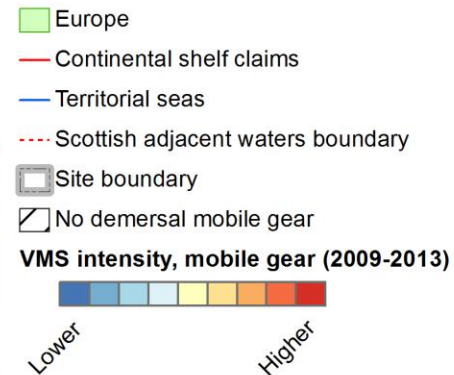
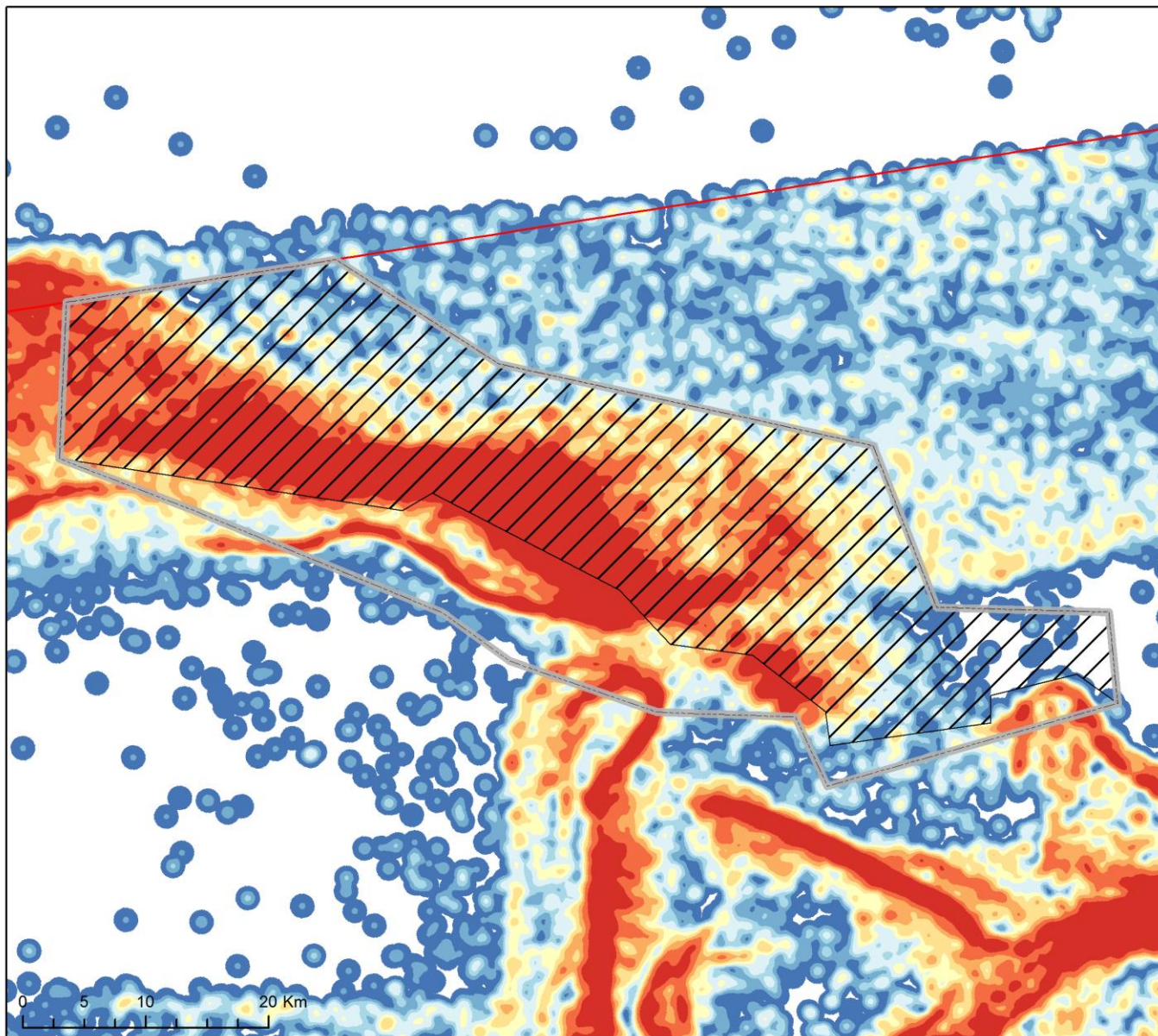


- Europe
- Continental shelf claims
- Territorial seas
- Scottish adjacent waters boundary
- Site boundary
- Stony Reef
- Tobi Iceberg ploughmarks
- No demersal mobile gear

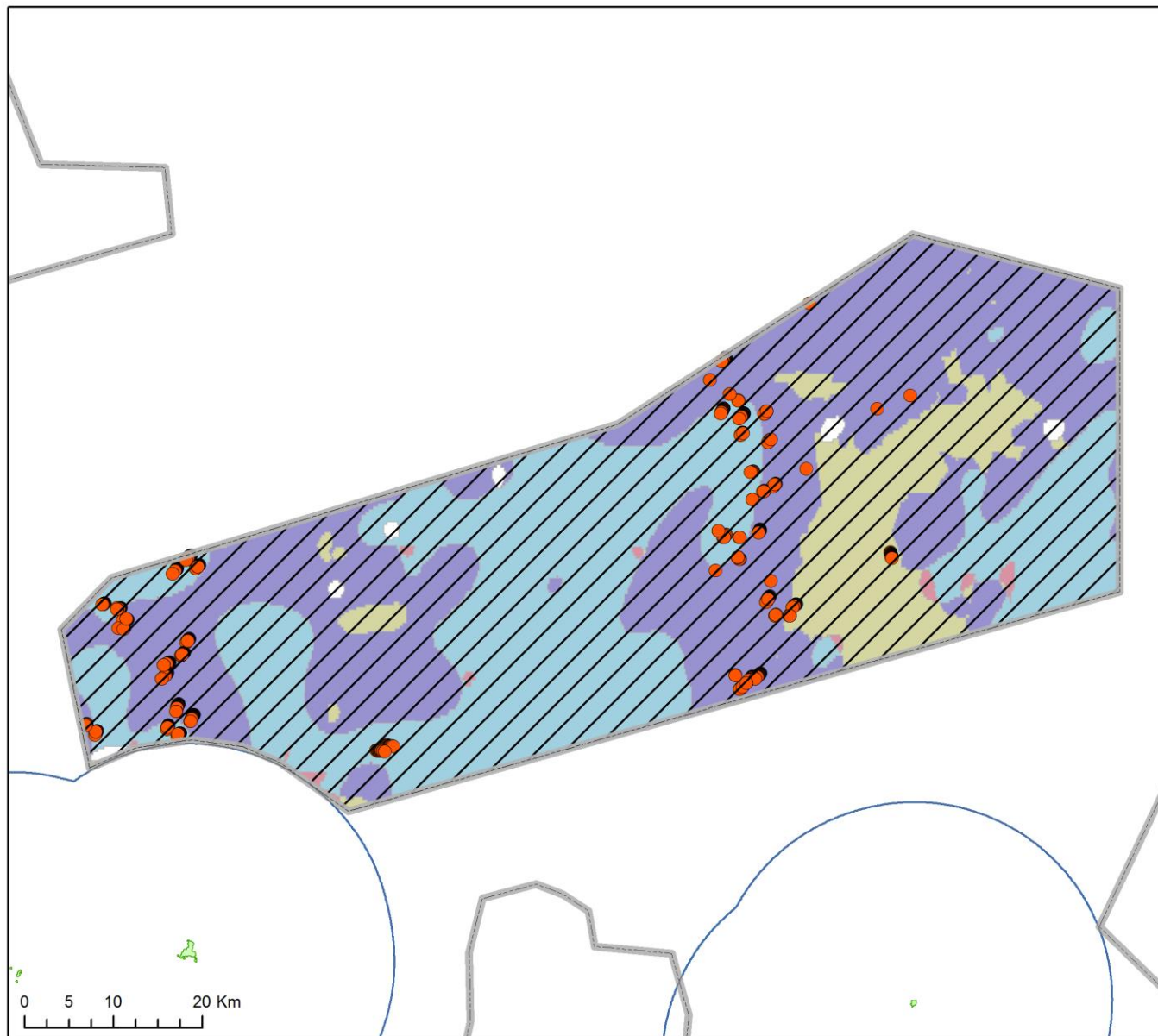


NOT FOR NAVIGATION. Created by Scottish Government (Marine Scotland) 2015. gj0955. © Crown Copyright, All rights reserved. Contains data © ICES, NOAA. Projection: Lambert Azimuthal Equal Area. Scale at A4 1:454,490

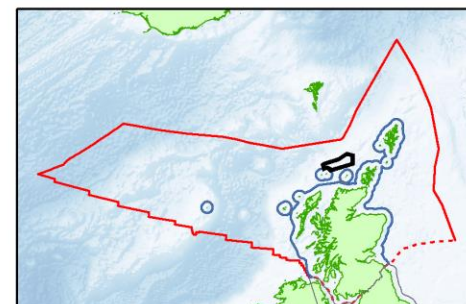
Wyville Thomson Ridge



West Shetland Shelf

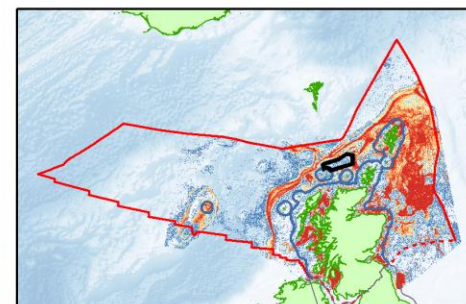
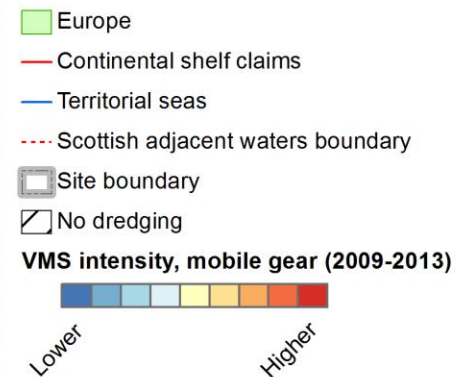
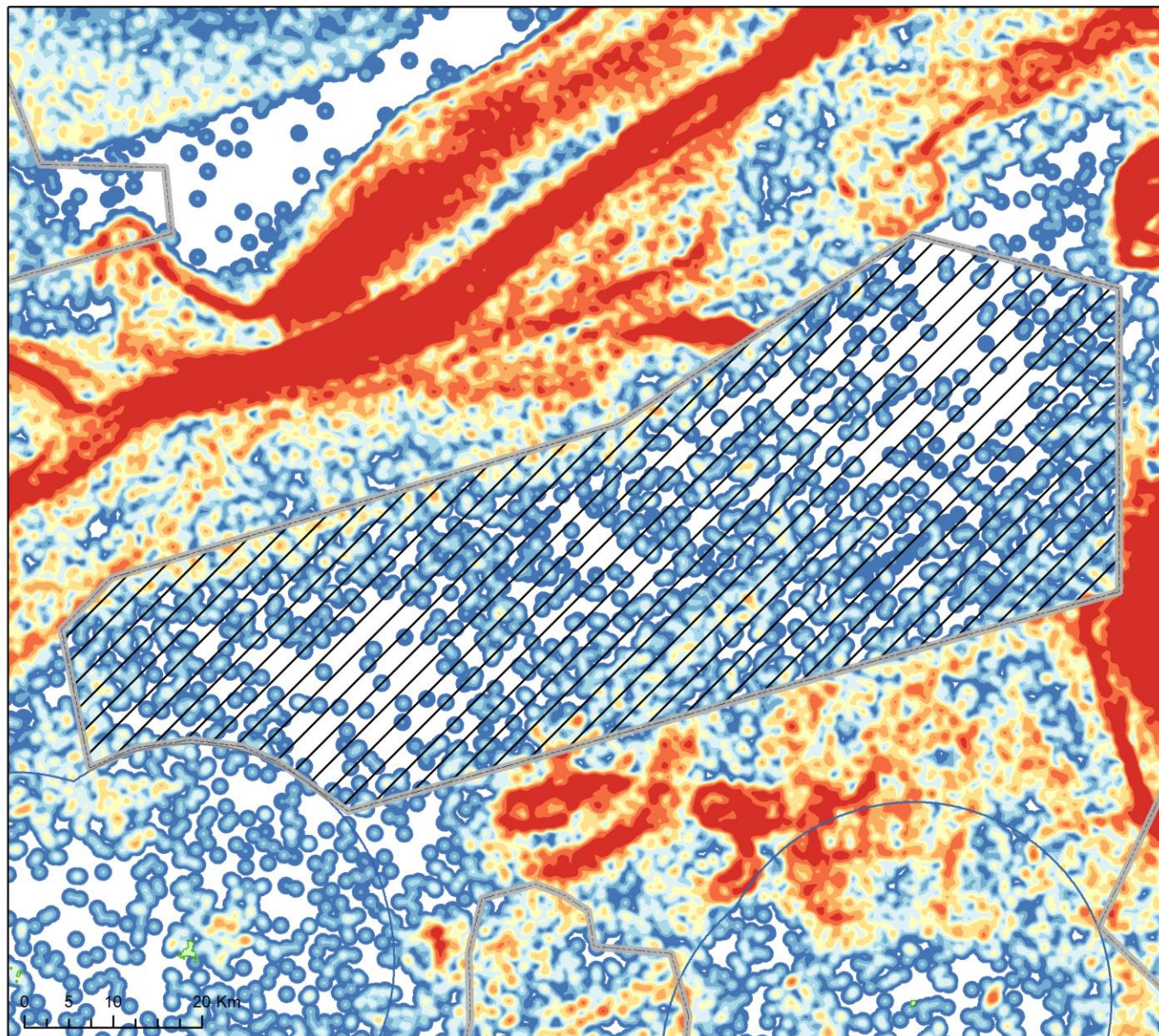


- Europe
- Continental shelf claims
- Territorial seas
- Scottish adjacent waters boundary
- Site boundary
- Offshore subtidal sands and gravels
- Offshore subtidal sands and gravels**
- A5.14: Circalittoral coarse sediment
- A5.15: Deep circalittoral coarse sediment
- A5.25: Circalittoral fine sand or A5.26: Circalittoral muddy sand
- A5.27: Deep circalittoral sand
- No dredging



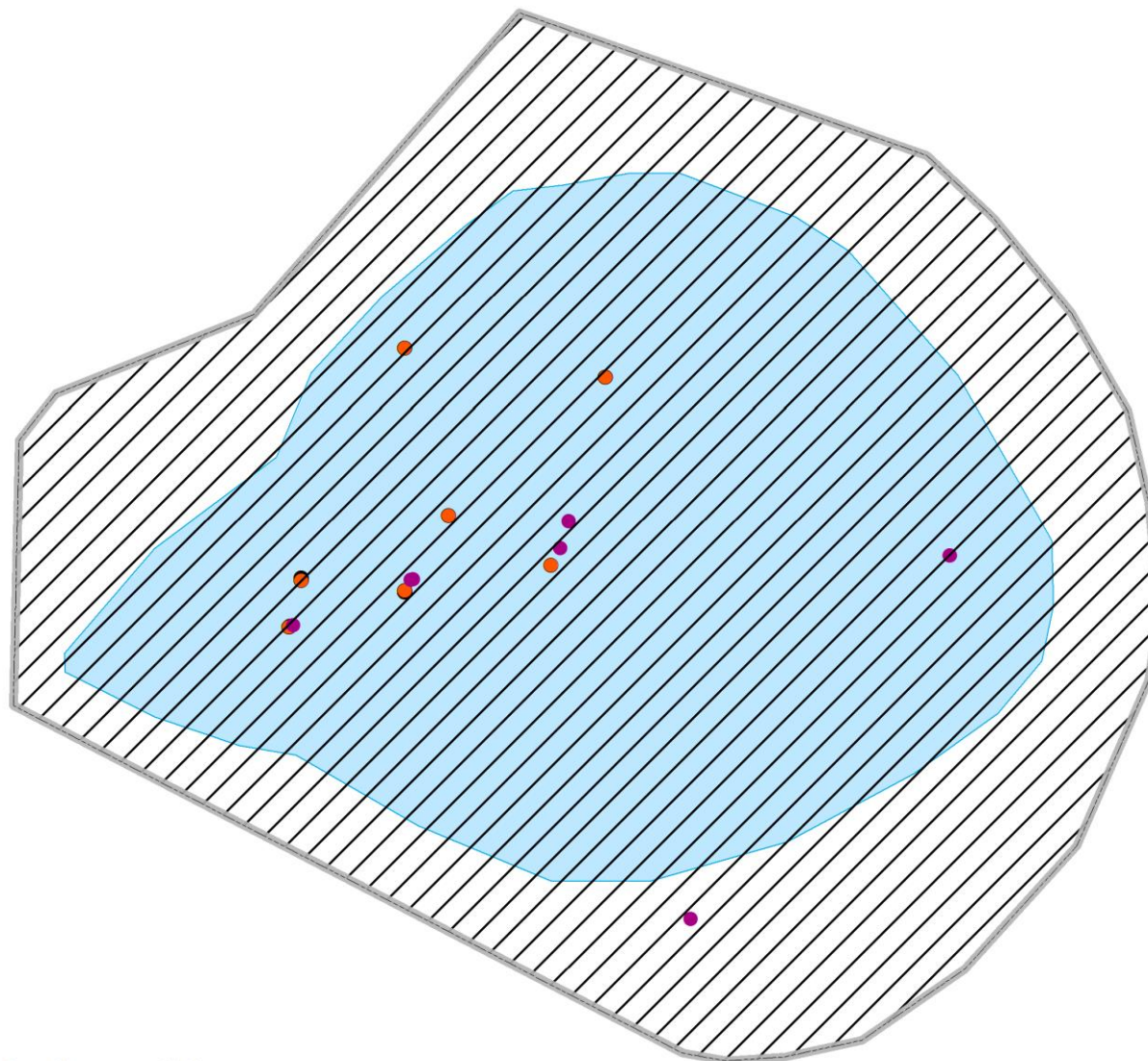
NOT FOR NAVIGATION. Created by Scottish Government (Marine Scotland) 2015. gj0955. © Crown Copyright, All rights reserved. Contains data © ICES, NOAA. Projection: Lambert Azimuthal Equal Area. Scale at A4 1:628,770

West Shetland Shelf

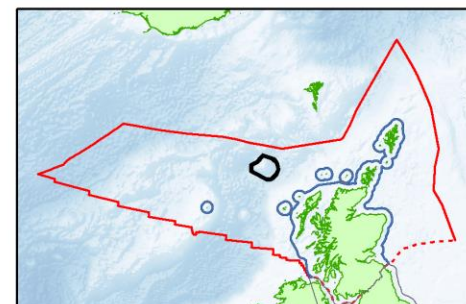


NOT FOR NAVIGATION. Created by Scottish Government (Marine Scotland) 2015. gj0955. © Crown Copyright, All rights reserved. Contains data © ICES, NOAA.
 Projection: Lambert Azimuthal Equal Area.
 Scale at A4 1:628,770

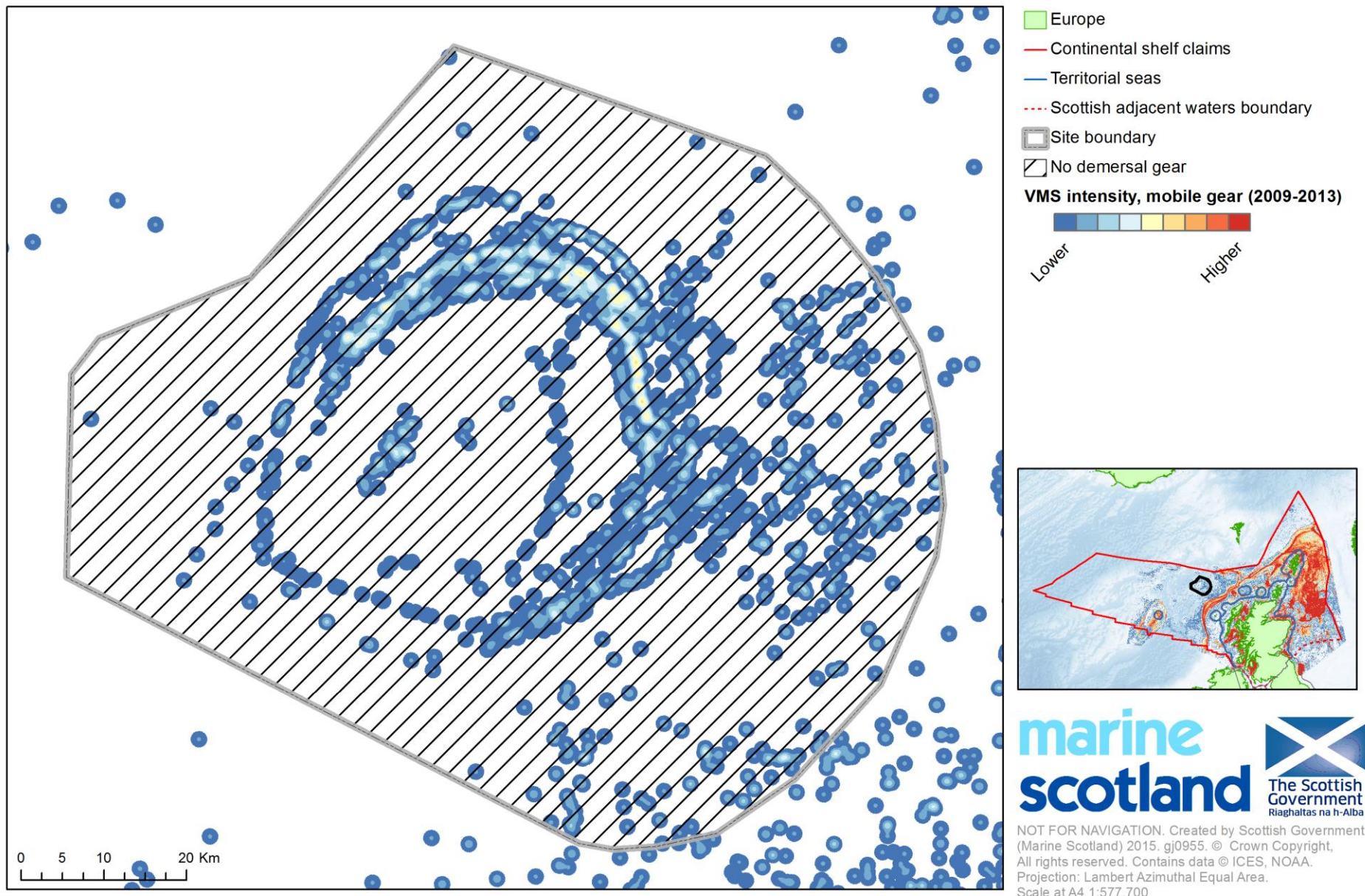
Rosemary Bank Seamount



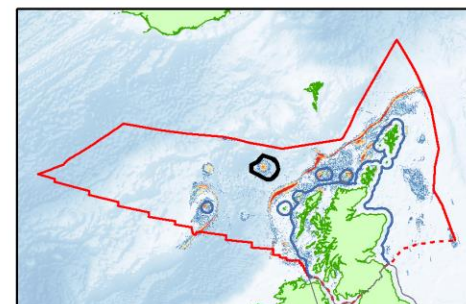
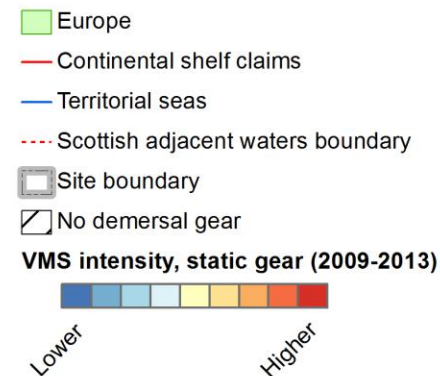
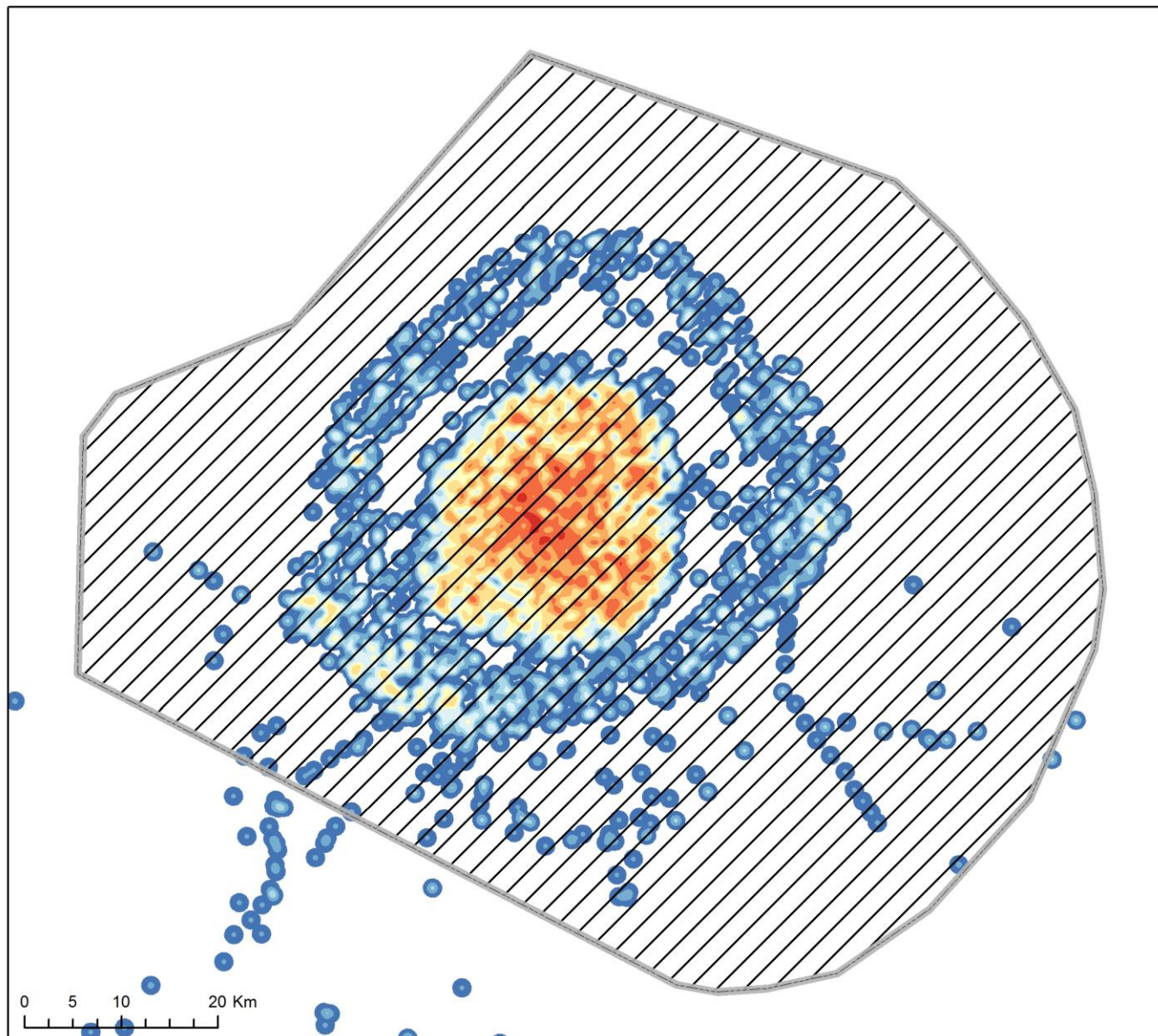
- Europe
- Continental shelf claims
- Territorial seas
- Scottish adjacent waters boundary
- Site boundary
- Deep sea sponge aggregations - habitat point records
- Seamount communities - habitat point records
- Seamounts - large scale feature polygon records
- ☒ No demersal gear



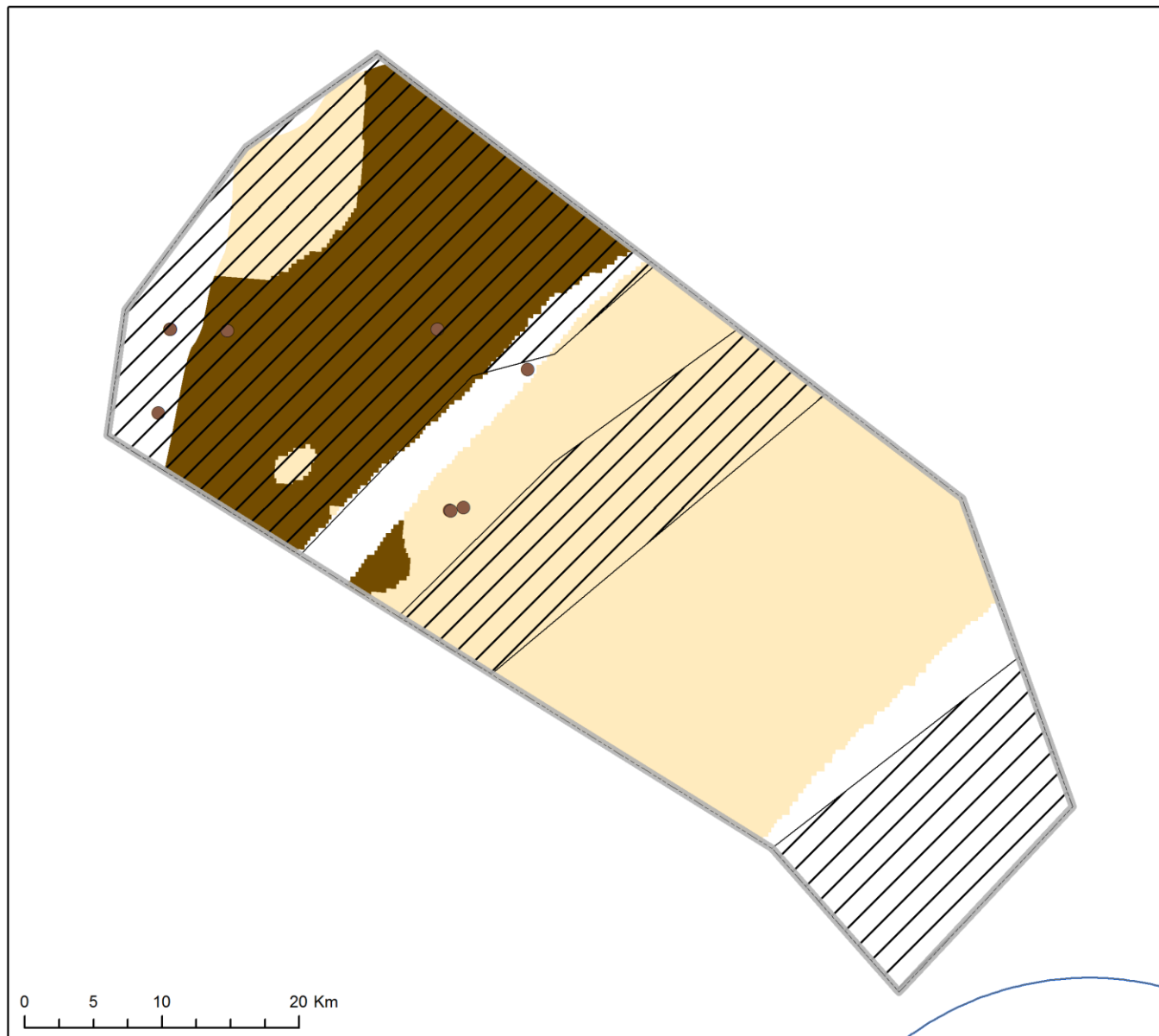
Rosemary Bank Seamount



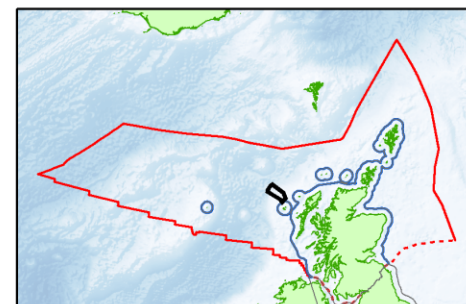
Rosemary Bank Seamount



Geikie Slide and Hebridean Slope

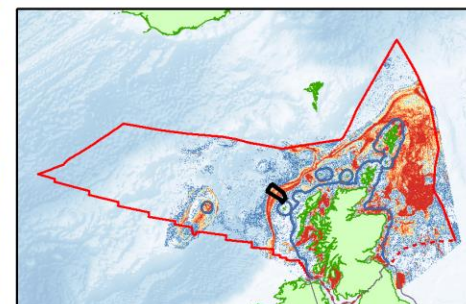
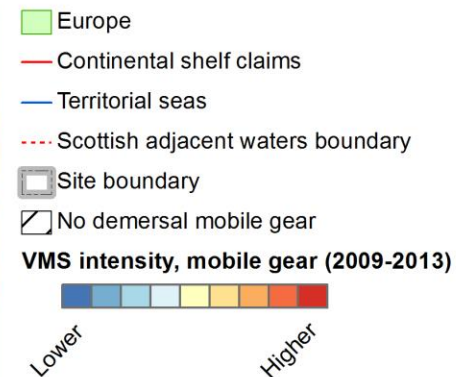
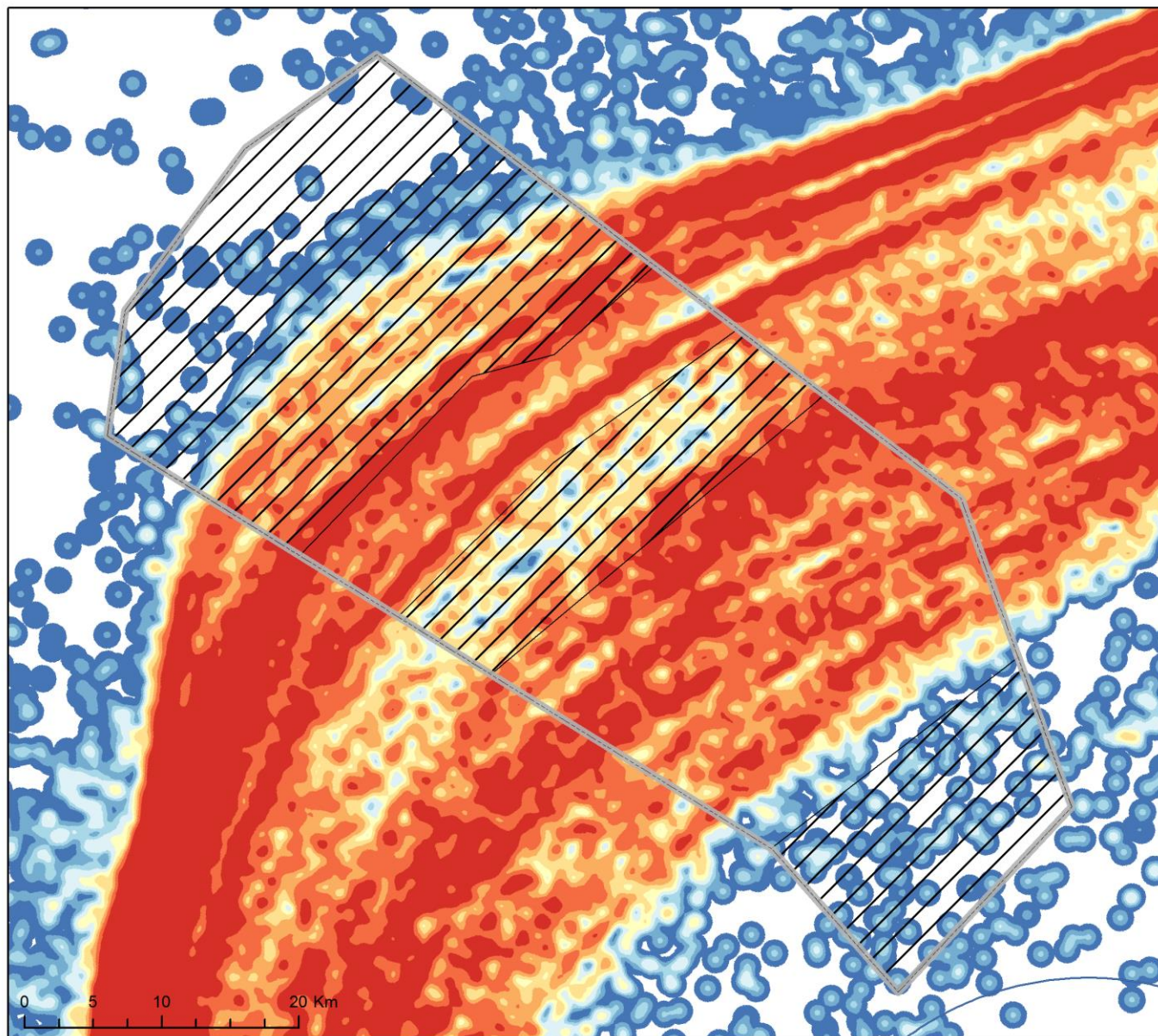


- Europe
- Continental shelf claims
- Territorial seas
- Scottish adjacent waters boundary
- Site boundary
- Burrowed mud
- Offshore subtidal sands and gravels
- Offshore deep sea muds
- No demersal mobile gear



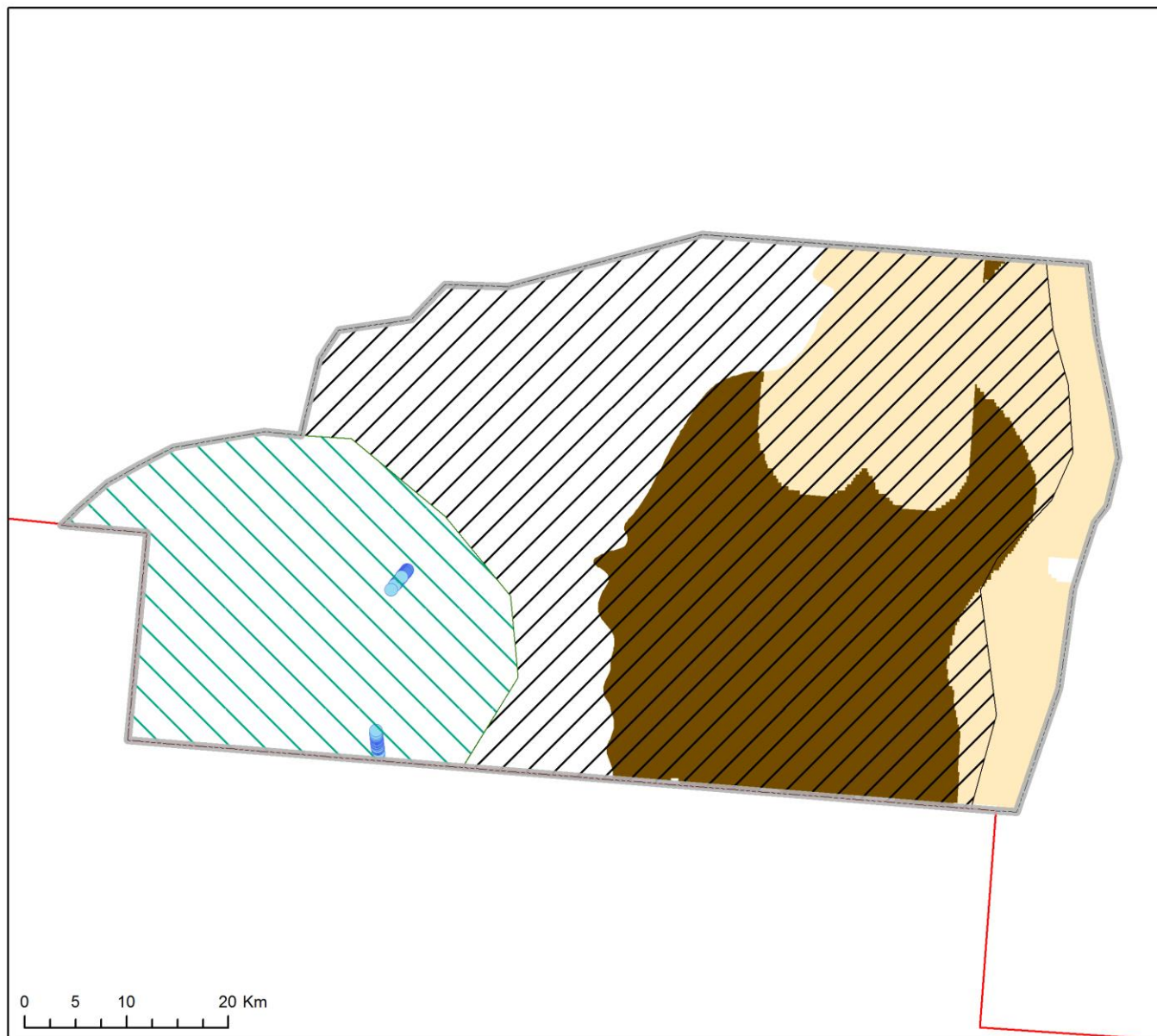
NOT FOR NAVIGATION. Created by Scottish Government (Marine Scotland) 2015. gj0955. © Crown Copyright, All rights reserved. Contains data © ICES, NOAA. Projection: Lambert Azimuthal Equal Area. Scale at A4 1:406,370

Geikie Slide and Hebridean Slope

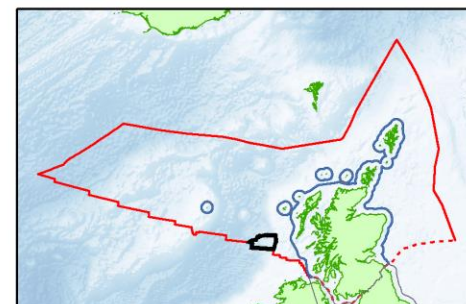


NOT FOR NAVIGATION. Created by Scottish Government (Marine Scotland) 2015. gj0955. © Crown Copyright, All rights reserved. Contains data © ICES, NOAA. Projection: Lambert Azimuthal Equal Area. Scale at A4 1:406,400

The Barra Fan and Hebrides Terrace Seamount

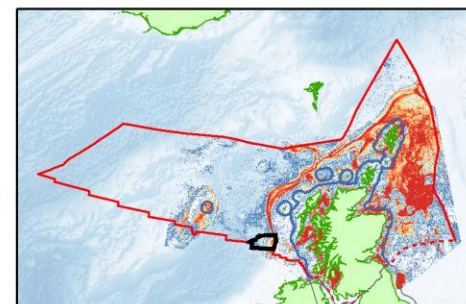
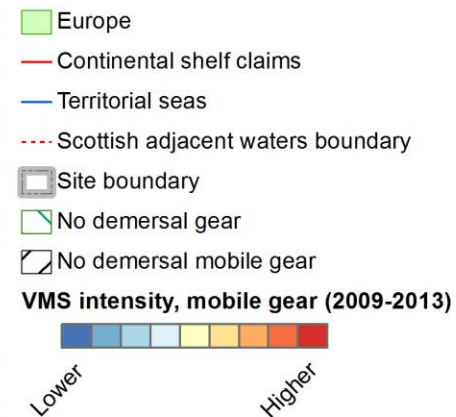
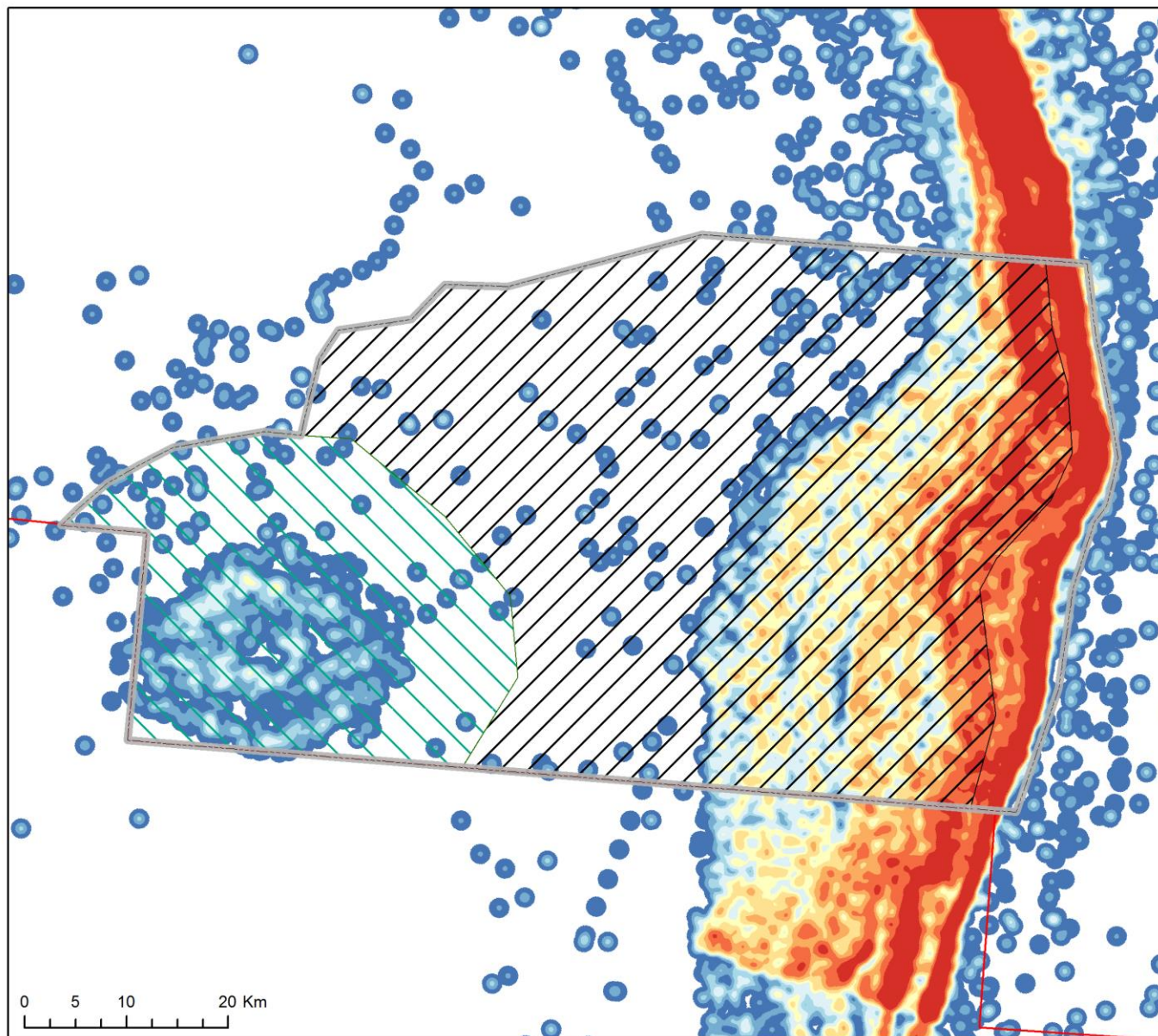


- Europe
- Continental shelf claims
- Territorial seas
- Scottish adjacent waters boundary
- Site boundary
- Seamount community
- Offshore subtidal sands and gravels
- Offshore deep sea muds
- No demersal gear
- No demersal mobile gear

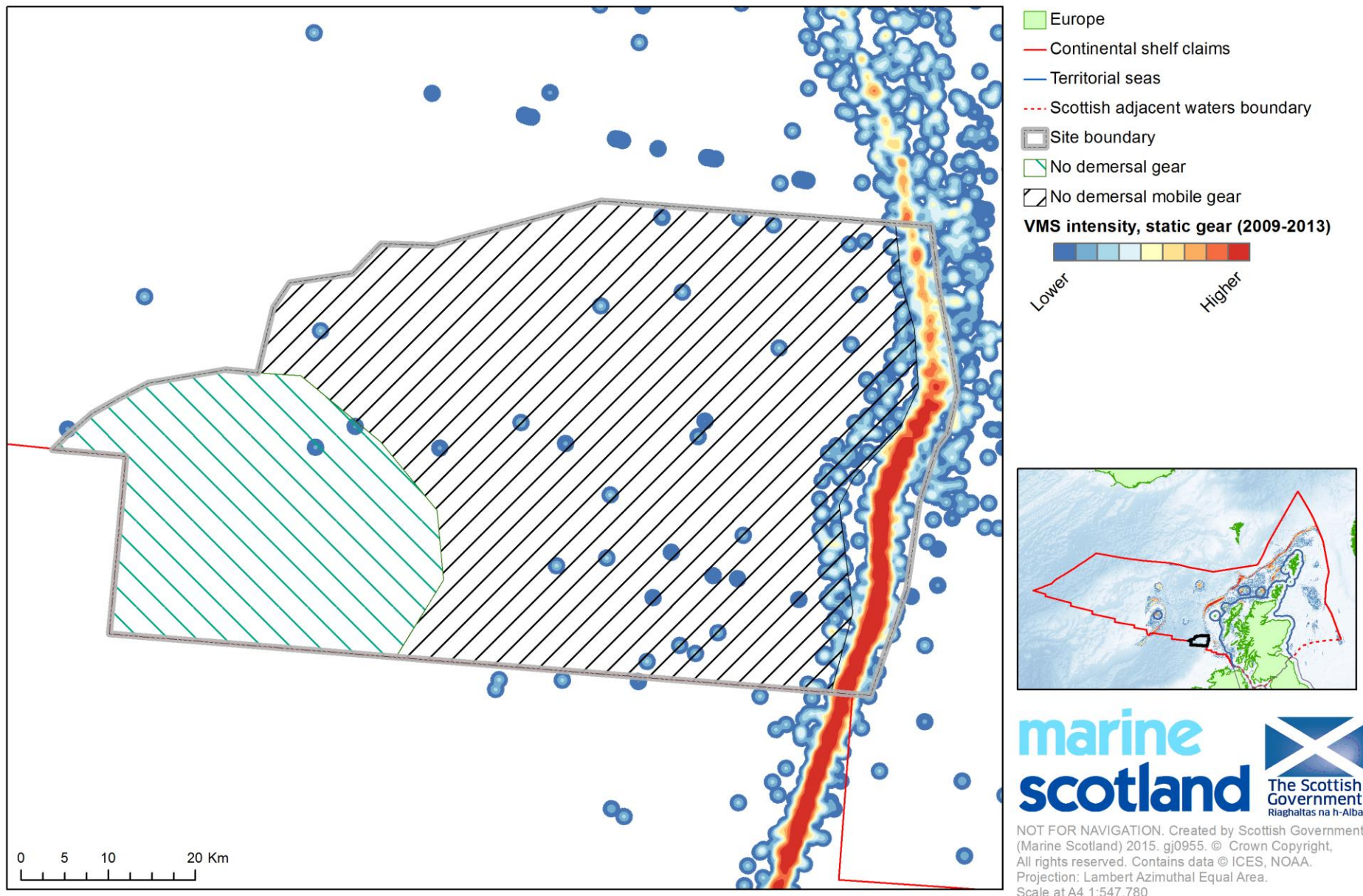


NOT FOR NAVIGATION. Created by Scottish Government (Marine Scotland) 2015. gj0955. © Crown Copyright, All rights reserved. Contains data © ICES, NOAA. Projection: Lambert Azimuthal Equal Area. Scale at A4 1:547,780

The Barra Fan and Hebrides Terrace Seamount



The Barra Fan and Hebrides Terrace Seamount



Area proposed for protection

Site	Area (sq km)	No Demersal Mobile (sq km)	No Demersal Static Gear (sq km)	No dredge (sq km)
Anton Dohrn Seamount	1429	1429		
East Rockall Bank	3697	3510		
Geikie Slide and Hebridean Slope	2217	1288		
Rosemary Bank Seamount	6932	6932	6932	
Solan Bank Reef	856	690		
The Barra Fan and Hebrides Terrace Seamount	4377	4081	1040	
West Shetland Shelf	4085			4085
Wyville Thomson Ridge	1741	1329		