



Ministerie van Landbouw,
Natuur en Voedselkwaliteit



Photo Marije Siemensma MS&C

Status EU LIFE CIBBRiNA project

Marije Siemensma
Marine Science & Communication
on behalf of Netherlands Ministry Agriculture,
Nature & Food Quality

NORTH WESTERN
WATERS
ADVISORY COUNCIL



HORIZONTAL WORKING GROUP 13 September 2021 – Virtual meeting



Overview

- > CIBBRiNA
- > EU LIFE Call
- > Project management structure
- > Work packages
- > Challenges
- > Case studies





Guiding principles

- › CIBBRiNA will work jointly with fishers, scientists, policymakers and NGO's
- › Prerequisite is an open mind towards possible solutions
- › Solutions need to be suitable for use by fishers and applicable for multiple gears, regions and species
- › Cooperation and co-creation with the fisheries industry from early on (RRI principles)
- › Mutual trust, respect and understanding of different perspectives essential
- › Build upon existing work to avoid repetition, while remaining sensitive to possible limitations of earlier approaches
- › It is considered acceptable and valuable to report on what does not work, as much as what is successful





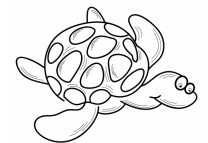
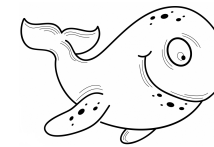
Overarching objectives

- > Minimise and where possible eliminate bycatch in the NEA/Baltic regions
- > Achieve successful cross-border cooperation with fishers and among countries
- > Implement successful monitoring programmes in cooperation with the RCGs
- > Implement successful/proven mitigation measures
- > Develop Joint Recommendations (CFP art.11), starting with high-risk species and fisheries
- > Determine high risk species and fisheries and develop a long-term strategy to minimise bycatch



Scope

- > Focus on **high risk fisheries** (static gears, e.g. gillnets, pots and creels, but also pelagic fisheries)
- > **Multi species** level (all PETS)
- > Regional scope **NEA/Baltic**, however, linkages with Med and Black Sea projects are recommended





EU LIFE

- > New Life call launched in July 2021
- > Deadline full proposal 30 November 2021 (internal deadline 23 November)
- > EU co-funding 67-75%
- > Aim is total €10-20 million
- > Depending on:
 - #countries
 - #vessels



- types of methods trialled
 - Monitoring: Remote Electronic Monitoring, observers, app
 - Mitigation: escape panels, pingers, alternative gear, net modifications etc.
- > Different expertise in countries
- > Interest from BE, DE, DK, ES, FR, IS, IR, LT, NL, NO, POL, POR, SW, UK

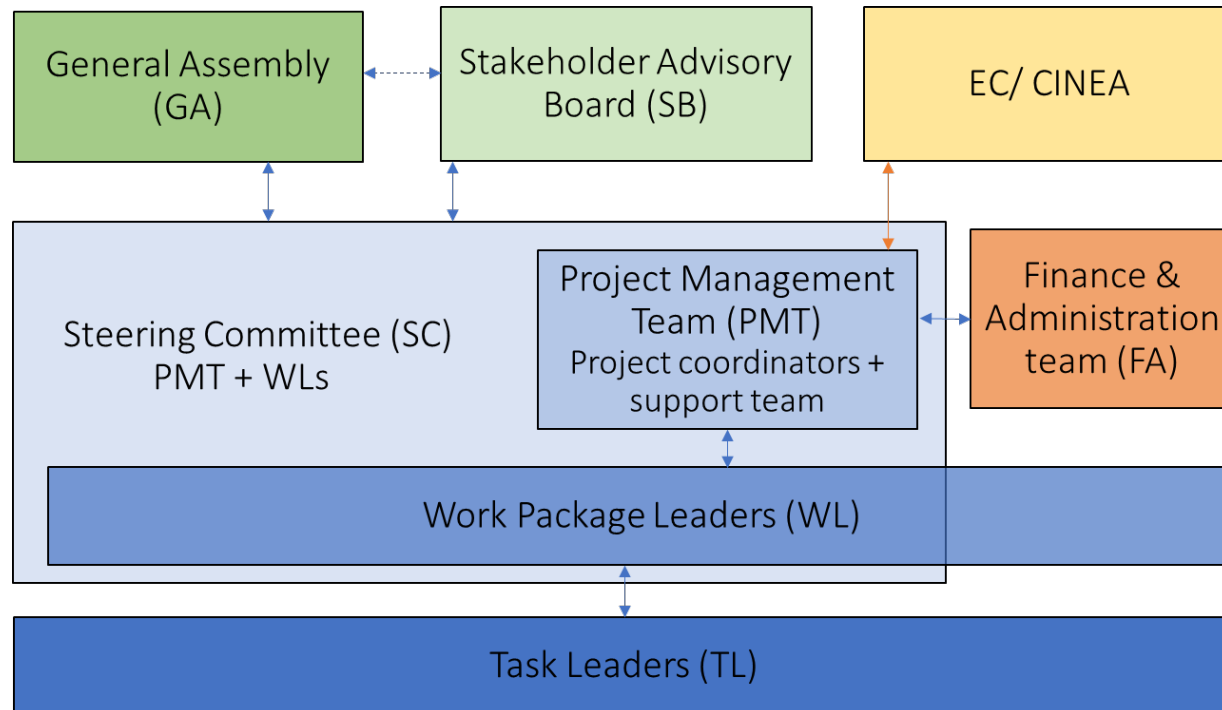


Participation

- > Regional representation depending on commitment, at least per country:
 - Fisheries/environment dept
 - Scientific expert
 - Fisheries industry repr
- > IGO's and NGO's
- > **Fishers**



Project management structure



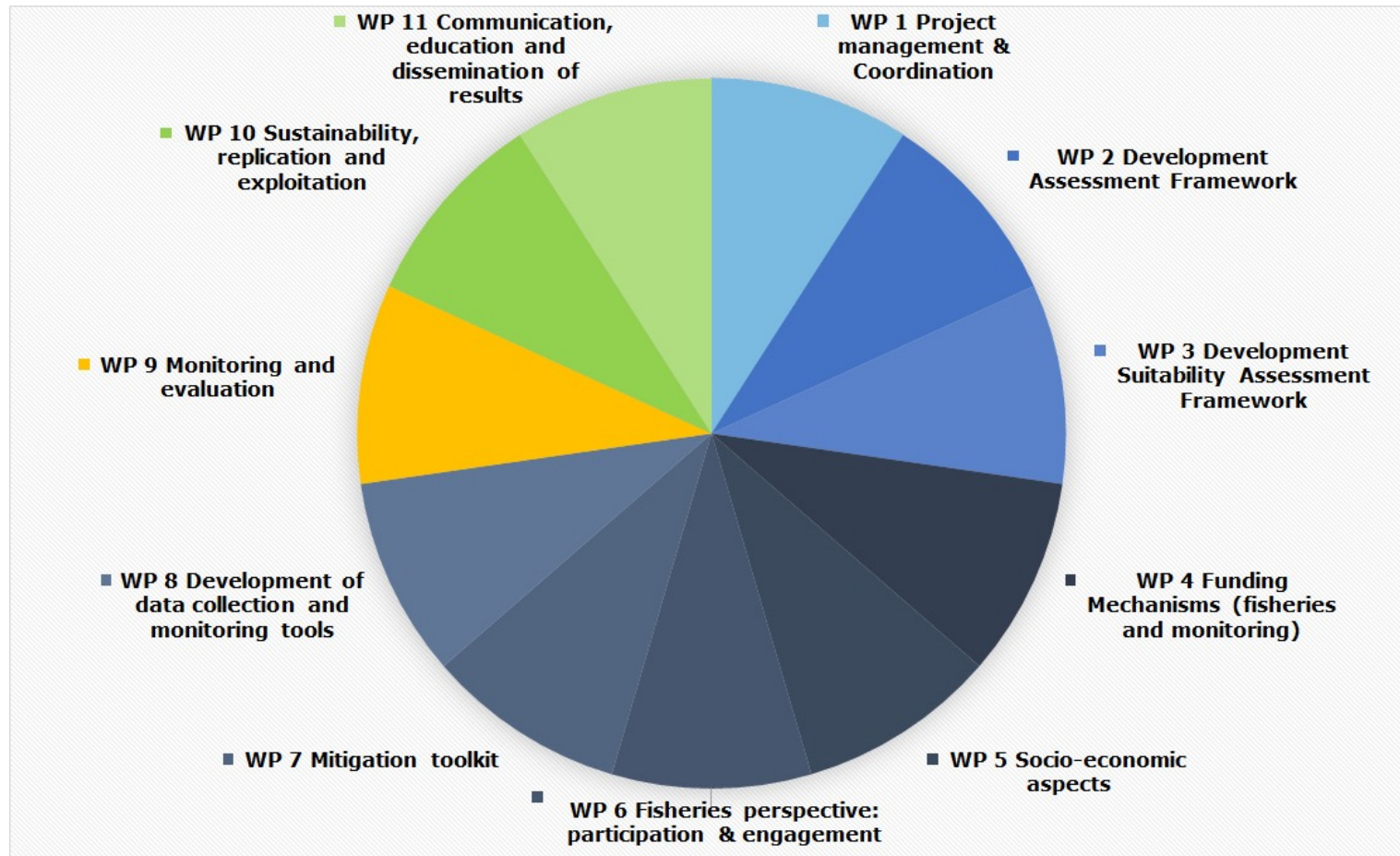


Stakeholder Advisory Board (SB)

- > Give feed-back to consortium about relevance of results for stakeholders
- > Stakeholders from outside the project belonging to e.g. the fishing industry (e.g. different AC's), policy, IGOs or NGOs
- > Criteria used to select an appropriate SB are:
 - workable size but inclusive;
 - all regions be represented;
 - all stakeholder types represented;
 - policy;
 - geographical balance



CIBBRiNA work packages





Main challenge: fisheries participation

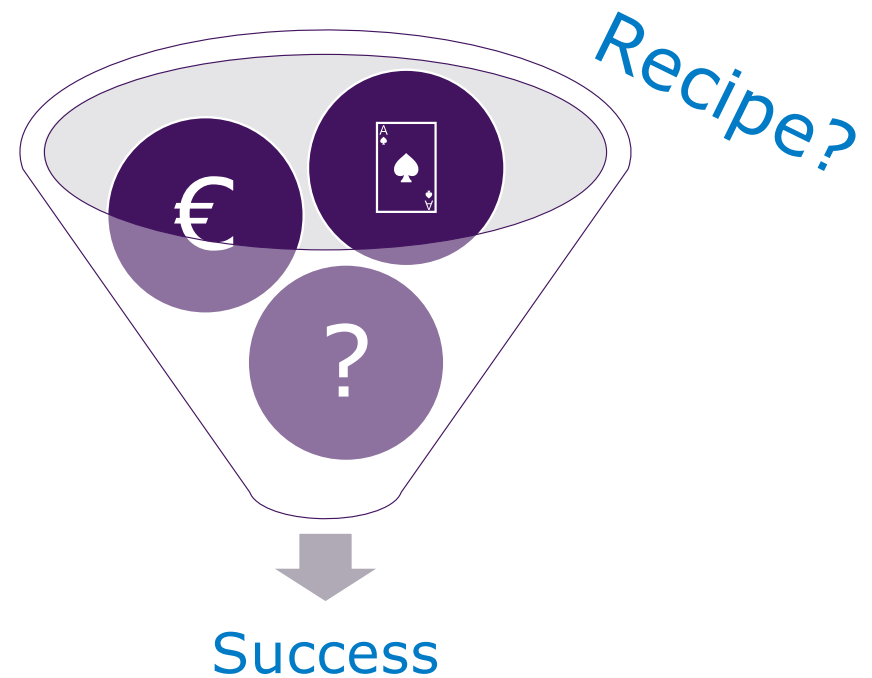
Ambitious goals

- Achieve cross-border cooperation, with fisheries industry & among countries
- Implement robust regional monitoring & successful bycatch reduction strategy

Essential to have fishers onboard

Key values

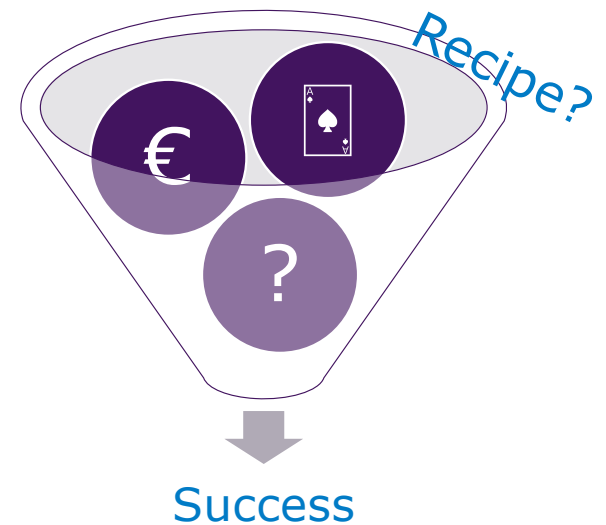
- Mutual trust, respect & transparency
- Acknowledge different perspectives
- Motivation, incentives, concerns





Main challenge: fisheries participation

- Open for advice and guidance
- Role of NWAC and other Advisory Councils?
- What are incentives for industry?
- Open for trials/case studies





Case studies (examples) -

Fisheries focused:

- > Gillnets
 - All PETS
 - Lump sucker fishery
- > Pelagic trawls
 - Marine mammals and sharks and rays
 - 'Stop grids' in the North Sea
- > Longline fisheries
 - Sharks and rays
- > Beamtrawls
 - Sharks and rays

Species focused:

- > Common dolphin, Bay of Biscay
- > Harbour porpoise, Baltic proper
- > Harbour porpoise, Iberian coast
- > Baleen whale entanglement (UK and elsewhere)
- > Deepsea sharks
- > Seabirds

Open for suggestions new trials



Thanks for your attention

> Contact & Questions

- Marije Siemensma
m.siemensma@msandc.nl
- Anne-Marie Svoboda
a.m.svoboda@minInv.nl



Programme overview – call characteristics

- Main call characteristics
 - Total budget LIFE Standard Action Projects 2021: € 132 million
 - No maximum funding amount limit – indicative range: € 2 – 13 million
 - Co financing rate of 60% maximum except:
 - 67% for project targeting both priority and non priority habitats and/or species
 - 75% for projects targeting exclusively priority habitats and/or species
 - Maximum 10 year duration, taking into account:
 - Sufficient time to gather information about the impact of project activities
 - Delays in obtaining permits and authorisations (main cause of delays)
 - Deadline for submission in e-portal: 30 November 2021, internal deadline **23 November 2021** (latter will only be mentioned in all further communication)



Programme overview – cost categories

Categories of eligible costs

- Personnel costs
 - based on actual salary costs, daily rate calculated based on 215 days/yr.
 - Secondment/specific work contract possible
- Subcontracting
 - Usual purchase practice/procurement rules to be followed: best value for money
 - Max. 30% at overall project level
- Other direct costs
 - Travel and subsistence / Equipment / Other goods, works and services (e.g. consumables, publications, promotion)
- Indirect costs: 7% flat rate



Types of involvement in LIFE projects

- > **Coordinating Beneficiary (Ministry of LNV):** submits grant application on behalf of the consortium, main point of contact for EC, overall coordination of the project
- > **Beneficiary:** main participant, performs key activities, receives funding and contributes to the project
- > **Affiliated entities:** organisation formally linked to a beneficiary, receives part of the grant
- > **Associated Partners:** partner organisation which participate in the action but does not receive grant funding (e.g. entities outside the EU)
- > **Subcontractor:** external assistance - limited part of the project /non-key activities, max. 30% of total eligible costs (overall project level)
- > **Third party:** entity outside project partnership, may receive funding up to € 20.000 for implementation or development of local initiatives that will contribute to the project's objectives
- > **Stakeholder:** organisations outside project partnership, with a specific interest or relevant knowledge with regard to the project. May be involved through meetings, workshops and/or consulted (for instance through participation in the Stakeholder Advisory Board).