

# WKNSCS 2022 summary



Scottish Government  
Riaghaltas na h-Alba  
gov.scot

With a focus on Northern Shelf haddock and plaice 7fg



NWWAC – 15<sup>th</sup> March 2022  
Dr Harriet Cole – [harriet.cole@gov.scot](mailto:harriet.cole@gov.scot)

**marinescotland**

# ICES WKNSCS 2022

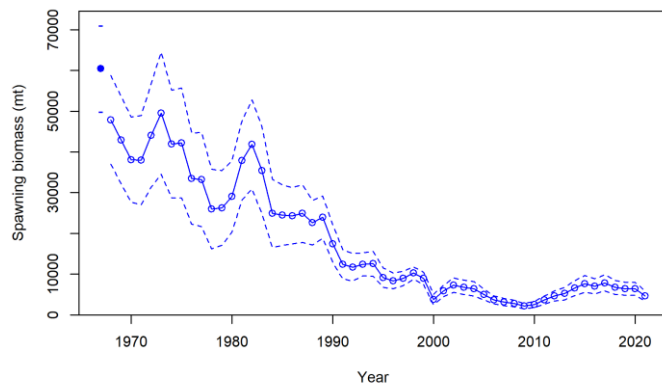
- **7-11 Feb 2022**
  - Chairs: Gudmundur Thordarson and Daniel Duplisea
  - Reviewers: Vanessa Trijoulet and Kristiina Hommik
- **Stocks:**
  - Northern Shelf haddock (27.46a20)
  - Celtic Sea plaice (27.7.fg)
  - Irish Sea cod (27.7.a)
  - North Sea plaice (27.4)
  - Malin Shelf/north of Scotland herring (her.6aN)
  - North of Ireland, west of Scotland herring (her.6aS7bc)

**Report not published yet!**

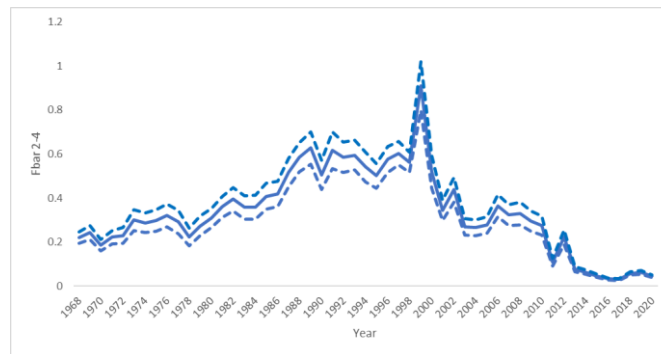
# Irish Sea cod (27.7.a)

- **Main assessors: Pia Schuchert (AFBI), Mathieu Lundy (AFBI)**
  - ASAP model had strong retrospective bias. Downgraded to a category 3 stock as a result
  - Proposed assessment model: SS3 (category 1)
  - Data: inclusion of recreational catches becoming more important, new natural mortality values, several surveys to consider
  - Productivity of this stock is more driven by environment rather than the fishery. Considering the use of  $F_{ECO}$  as a reference point.
  - $SSB_{2021} < B_{lim}$

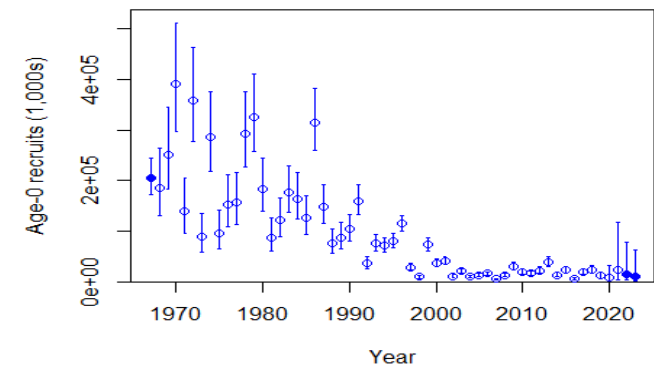
SSB



Fishing mortality



Recruitment

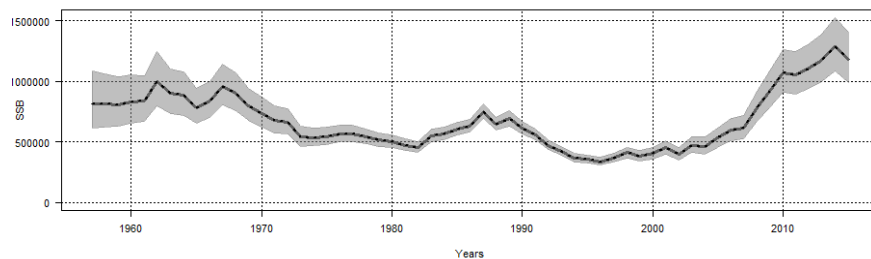


# North Sea plaice (27.4)

- **Main assessor: Chun Chen (WUR)**
  - AAP model had several issues (age & year effects, plus group)
  - Proposed assessment model: SAM (category 1)
  - Data: Combined survey indices methods, natural mortality.
  - $SSB_{2021} > MSY B_{trigger}$

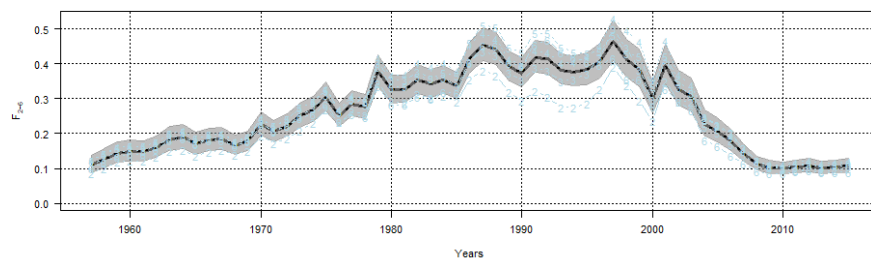
## SSB

run final



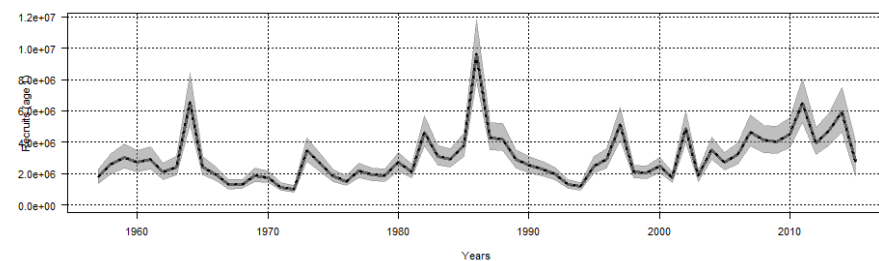
## Fishing mortality

run final



## Recruitment

run final



# Malin Shelf/north of Scotland herring (her.6aN)

- **Main assessor: Eleanor MacLeod (MSS), Neil Campbell (MSS)**
  - Previously was assessed in combination with her.6aS7bc. Genetics now used to split survey data sources.
  - Category 1 SAM assessment was attempted but was rejected.
  - Due to sensitivity to inclusion of particular survey indices and lack of strong justification for choosing particular survey series over others
  
  - Category 3: Constant Harvest Rate 2021 WKLIFE method
  - CHR is calculated from catch length frequency data
  - Final review by external reviewers is required

# North of Ireland, west of Scotland herring (her.6aS7bc)

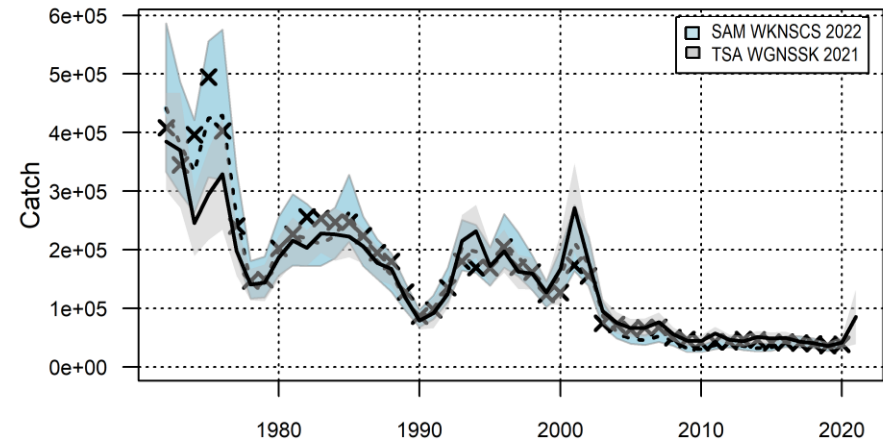
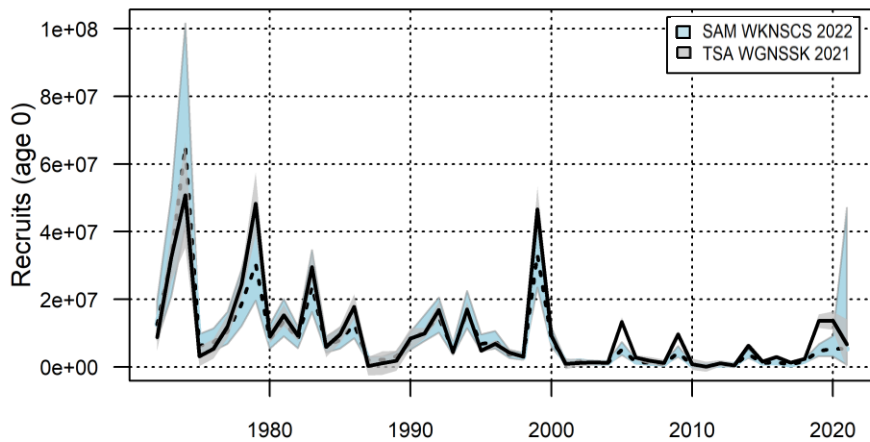
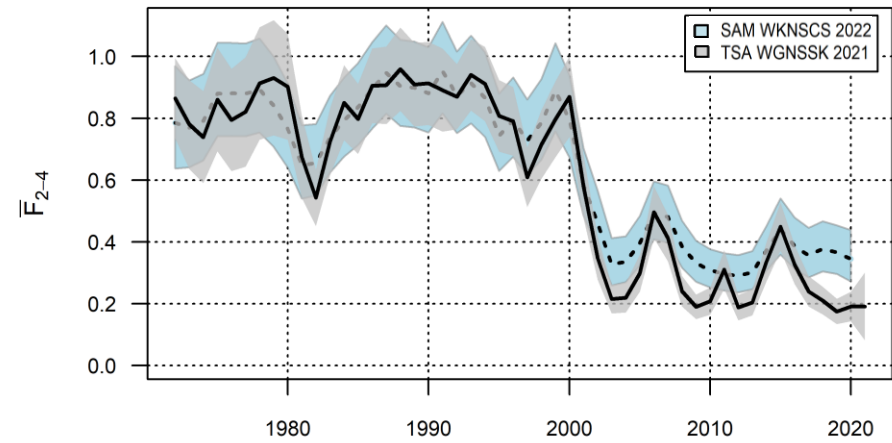
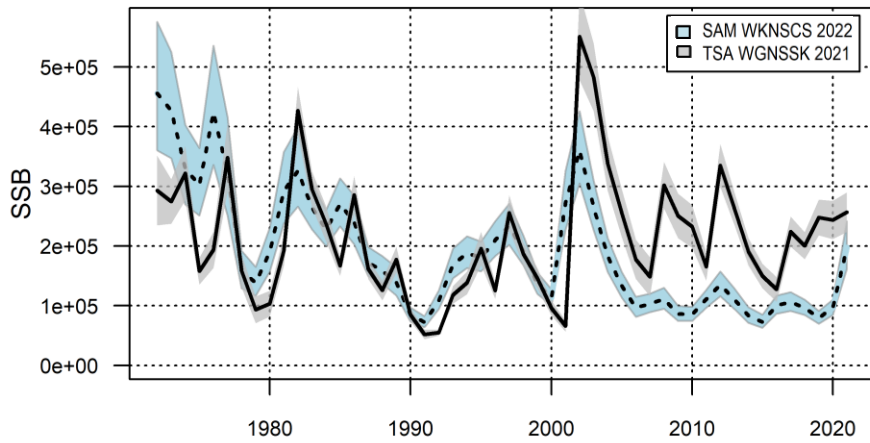
- **Main assessor: Afra Egan (MI), Cormac Nolan (MI)**
  - Previously was assessed in combination with her.6aN. Genetics now used to split survey data sources.
  - Category 1 SAM assessment was attempted but was rejected (a number of issues that couldn't be resolved).
  - Category 3: CHR 2021 WKLIFE method
  - Final review by external reviewers is required

# Northern Shelf haddock (27.46a20)

- **Main assessor: Harriet Cole (MSS)**
- **New assessment model needed**
  - Support for TSA soon to be unavailable
- **Propose SAM as new model**
  - TSA and SAM both state-space models
  - SAM run alongside TSA each year at WGNSSK
- **New data (DEWK – Nov 2021)**
  - Maturity ogives, survey indices, mean stock weight-at-age, catch data, natural mortality



# New SAM assessment

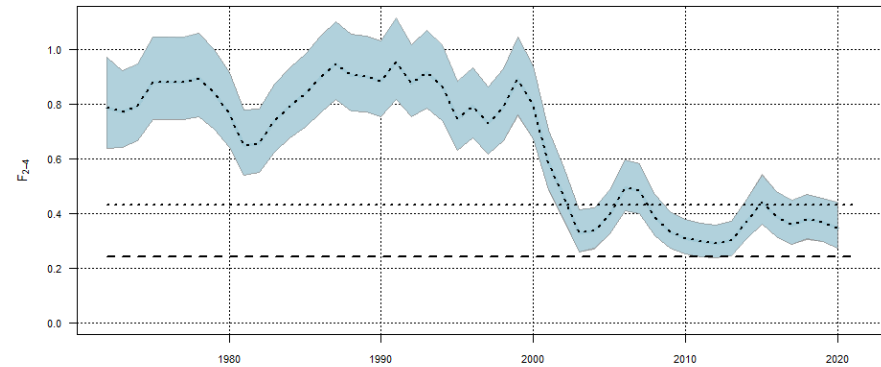
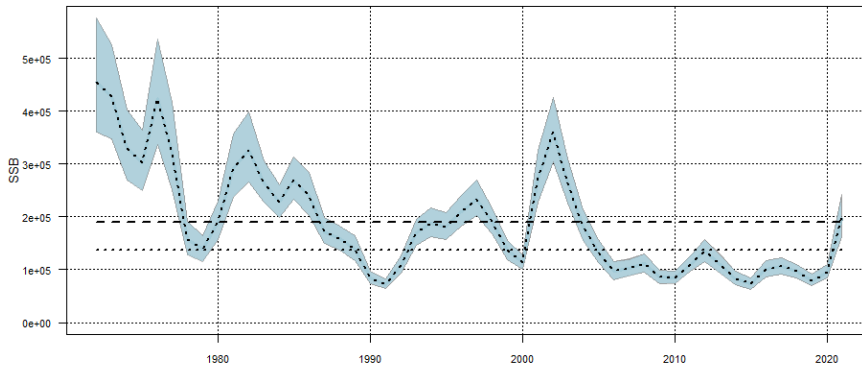




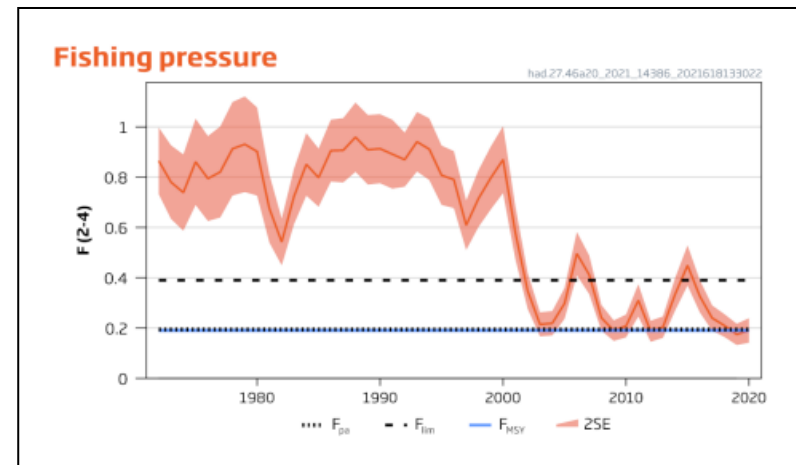
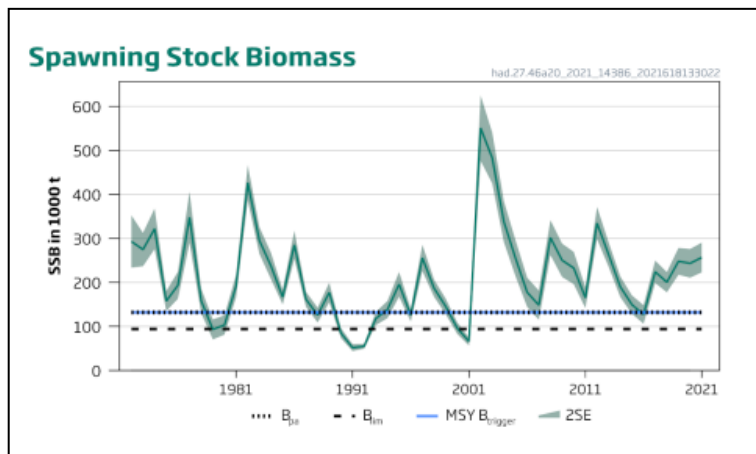
# Reference points

- Fishing mortality reference points have scaled with rescaling of assessment
- New indices indicate that recent recruitment/SSB is lower than previously thought
- $SSB_{2021} > MSY B_{trigger}$  – opportunity to protect large incoming year classes

WKNCS 2022



WGNSSK 2021



# Celtic Sea plaice (27.7fg)

- **Main assessor: Vladimir Laptikhovsky (CEFAS)**
  - Previously, a category 3 stock – SPiCT assessment
  - Proposed assessment model: SAM (category 1)
  - Data: reconstructed discards prior to 2004 seem to be causing issues
  - This stock assessment was not in a state sufficient to pass peer review by the time of the benchmark workshop. A secondary review was scheduled for after the WKNSCS 2022 meeting.

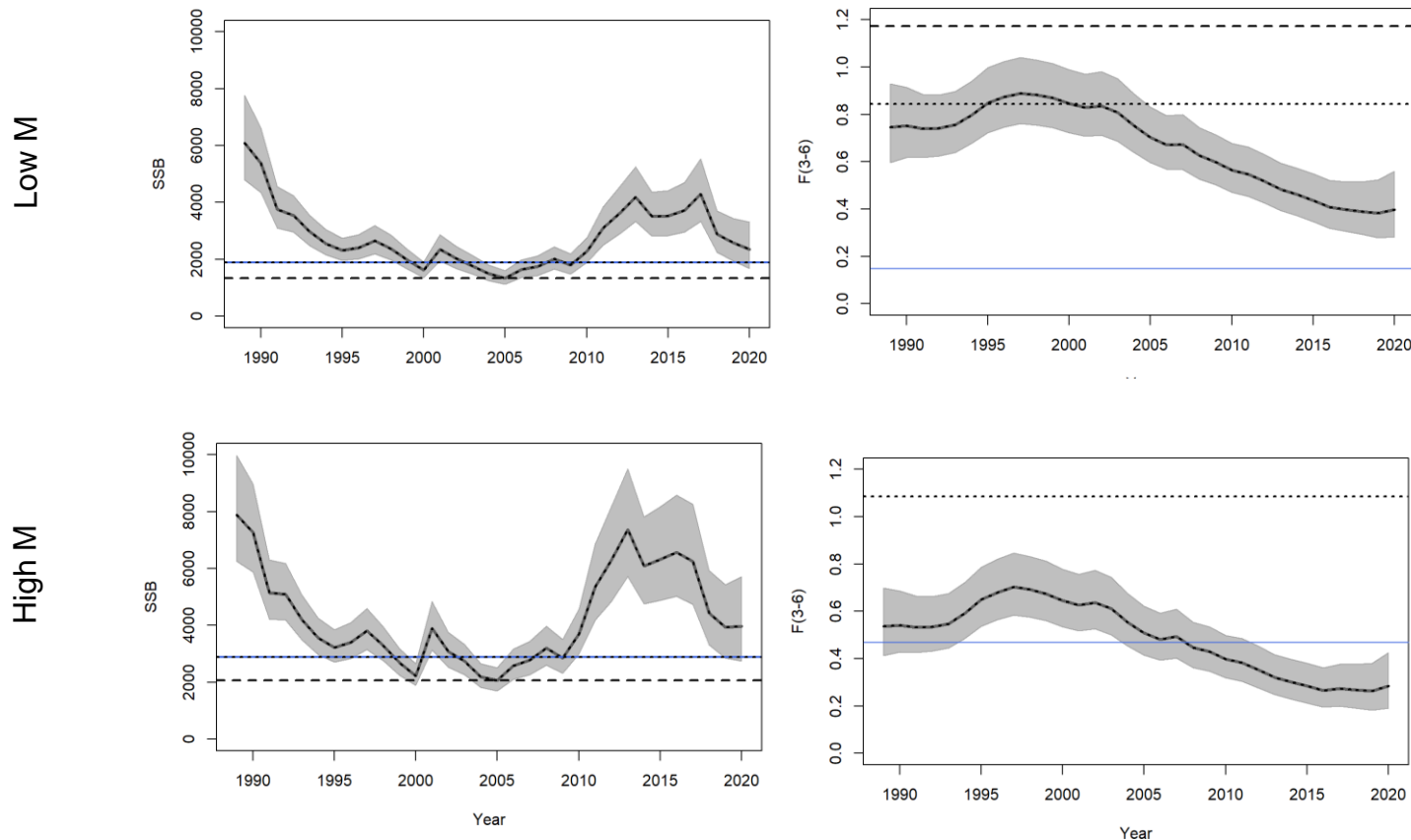
# Celtic Sea plaice (27.7fg)

- **SAM model versions tried:**

- Start year 2004 onwards to excluded reconstructed discards (not kept)
  - Using reconstructed discards from 1989-2003 (kept)
  - Add discard survival – 50% survival (not kept)
  - Changing natural mortality from “low” values as in plaice of the Irish Sea to “high” values as estimated for plaice in the eastern Channel
- 
- Not clear which choice of natural mortality was proposed in the end.

# Celtic Sea plaice (27.7fg)

- SAM performance for estimating reference points was sensitivity to choice of natural mortality (M)



SSB: dotted/solid line – MSY trigger and  $B_{pa}$ ; dashed line –  $B_{lim}$ .  
Fbar: dotted line –  $F_{pa}$ , solid line –  $F_{msy}$ , dashed line –  $F_{lim}$ .

# Thank you for listening

- Questions?