

NORTH WESTERN
WATERS
ADVISORY COUNCIL



Pelagic
ADVISORY
COUNCIL



NSAC
North Sea Advisory Council



Welcome to the Joint AC – SURIMI workshop

The workshop will start at 9:30 CET



surimi-project.eu



[SURIMI Project](#)



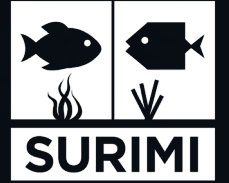
[@surimi_project](#)



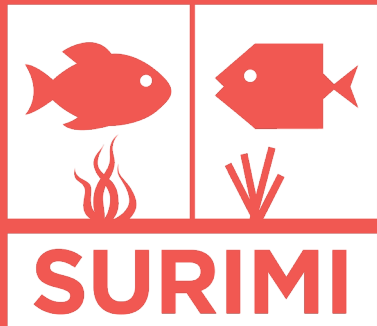
Funded by
the European Union

Welcome

- How this workshop came to be
- High-level participant introductions
- Recording of meeting for minutes
- Meeting etiquette / Communication
 - Chatham House Rule: “participants are free to use the information received, but neither the identity nor the affiliation of the speaker(s), nor that of any other participant, may be revealed”
 - This includes social media - please do not quote others.
 - Please turn on your camera when speaking / raising hand.
 - Please be respectful of one another.

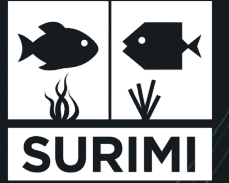


Objectives, agenda and introduction to SURIMI



Objectives of the workshop

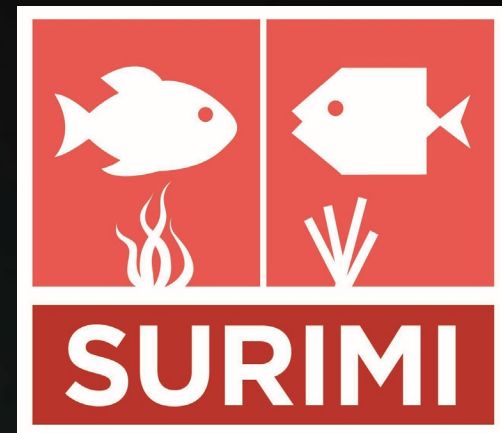
- Introduce the SURIMI Project
- Share information about the scientific fisheries management models that we will integrate
- Collect your inputs to guide the tool development and design
- Answer any questions you might have



Agenda



Time	Agenda Point	Details
9:30-9:55	Opening session	<ul style="list-style-type: none">- Welcome & introductions- Objectives- Introduction to SURIMI and the models
9:55-10:40	Modelling session	<ul style="list-style-type: none">- Diving deeper into the models- Short video of each model- Q&A
10:40-10:55	Coffee break	
10:55-12:20	Online tool and feedback session	<ul style="list-style-type: none">- Introduction to the online tool (visual interface)- Providing feedback on key questions which will guide the future design- Plenary discussion
12:20-12:30	Closing and next steps	<ul style="list-style-type: none">- Summary and key take-aways- Next steps



EU MISSION: RESTORE OUR OCEAN AND WATERS

**Implementing socio-ecological models
into the European Digital Twin Ocean
to guide real-world problem-solving
and policy creation**



AT A GLANCE

Name: SURIMI - Integration of innovative and reliable socio-ecological models and user-driven solutions into the Digital Twin Ocean, to facilitate what-if scenarios and decision support, under a co-creation approach.

Programme: Horizon Europe

Call Topic: HORIZON-MISS-2023-OCEAN-01-08

Type of Action: Research and Innovation Action (RIA)

Duration: May 2024 – April 2027
(36 Months)

Coordinator: NORCE Norwegian Research Centre AS

Consortium: 8 partners

Countries: 7

Total Budget: €3.4 million



surimi-project.eu



[SURIMI Project](#)



[@surimi_eu](#)

PARTNERS



Ecopath
International
Initiative



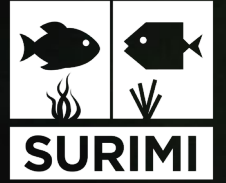
Istituto di Ricerche
sulla Popolazione
e le Politiche Sociali



ARISTOTLE
UNIVERSITY
OF THESSALONIKI



SURIMI toolbox



- Set of **socio -ecological models** relevant for understanding the dynamics of human fishery activities
- Accompanied by **assessment and policy modules** to retrieve important information and simulate the probable effects of selected **what -if scenarios** .
- **SURIMI toolbox (online tool)** will package the models and datasets and provide a **user-friendly, interactive interface** that will support stakeholder interaction with the tools.



SURIMI COMBINED MODELS

BEHAVIOUR AND
ADAPTIVE NATURE
OF FISHERS

WE ARE FOLLOWING
THE FISH STOCKS THAT
HAVE MOVED TO
COOLER WATERS...

INTERACTIONS WITH
FISHERS/FISHING
FLEETS

FISHING
FLEET
PROFITS

FISHER'S
INCOME

TOTAL FLEET
LANDINGS

FISHING
EFFORT

FOOD
WEB

SPECIES BEHAVIOUR

INTERACTIONS WITH
ECOLOGY (ECOSYSTEMS,
SPECIES AND HABITATS)

LEGEND:
● POSEIDON
● CMSY++
● ECOPATH
WITH ECOSIM
● VALUE
CHAIN

IMPACTS ON
SEABED
HABITATS

SPECIES
INTERACTIONS

HARVEST/CATCH
RATES

MAXIMUM
SUSTAINABLE
YIELD

STOCK HEALTH
& SUSTAINABILITY

INTERACTIONS
WITH
REGULATIONS
& REGULATORY
CHANGES

FISHING REGULATIONS

EFFORT REGULATIONS,
GEAR RESTRICTIONS,
AREAS CLOSED TO
FISHING IN PLACE

SUBSIDIES FOR
FISHERS

POLICY MAKERS

INTERACTIONS
WITH
SOCIO-ECONOMICS

ECONOMIC
BENEFITS

RESTAURANT

PROCESSING
& PACKAGING

FISH
MARKET

MARKET
DEMAND

PRICE
FOR
CONSUMERS

PRICE
FLUCTUATIONS

WE REALLY NEED
TO BUY A MORE
FUEL-EFFICIENT
BOAT

COSTS
INCURRED
BY
FISHERS

ENVIRONMENTAL
CONDITIONS
(E.G. TEMPERATURE
CHANGE)

INTERACTIONS
WITH CHANGING
ENVIRONMENT

INTERACTIONS
WITH
FISH STOCKS

STOCK GROWTH & BIOMASS

UNINTENDED CATCH

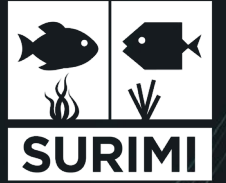
IMPACTS ON OTHER
SPECIES



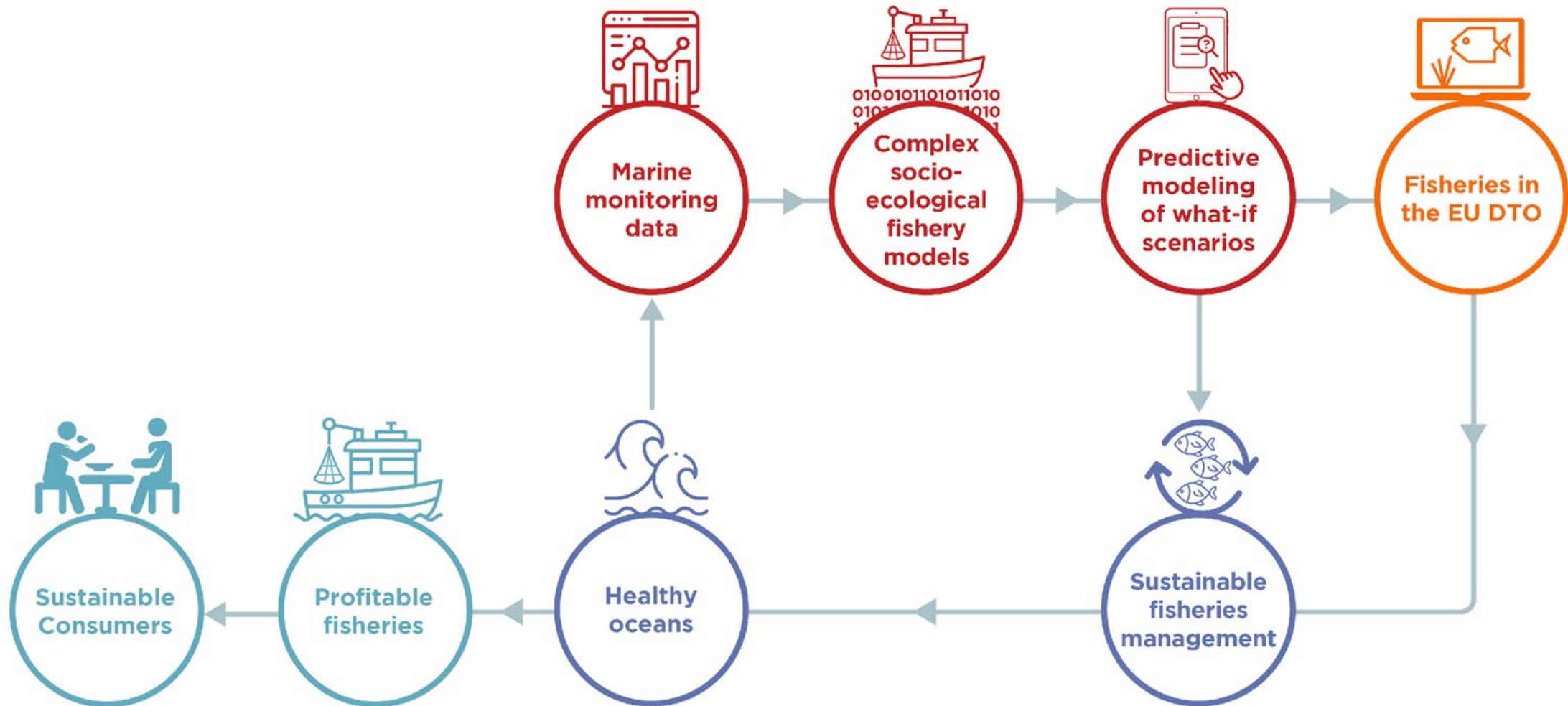
EU Digital Twin of the Ocean

- The European Digital Twin of the Ocean (EU DTO) aims to be a near real-time **virtual representation of the ocean** that is accessible to all.
- EU DTO combines **ocean observations** , **artificial intelligence** and high-performance **computational modelling** .
- It uses modelling tools using **real-time and historical data** to **simulate scenarios** , allowing stakeholders to make decisions based on data.

The SURIMI Toolbox will be integrated into the EU DTO



SURIMI Value Chain





Introduction to SURIMI official video:

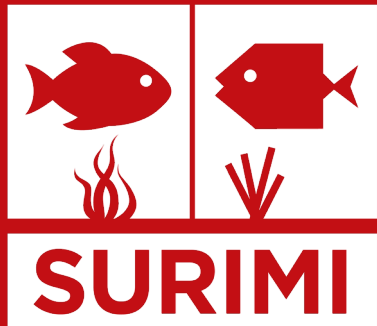
<https://www.surimi-project.eu/overview/>

Introduction to SURIMI models video:

<https://www.youtube.com/watch?v=Rk6whwQVbNI>

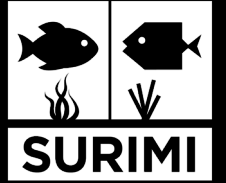
Modelling session:

Diving deeper into the models

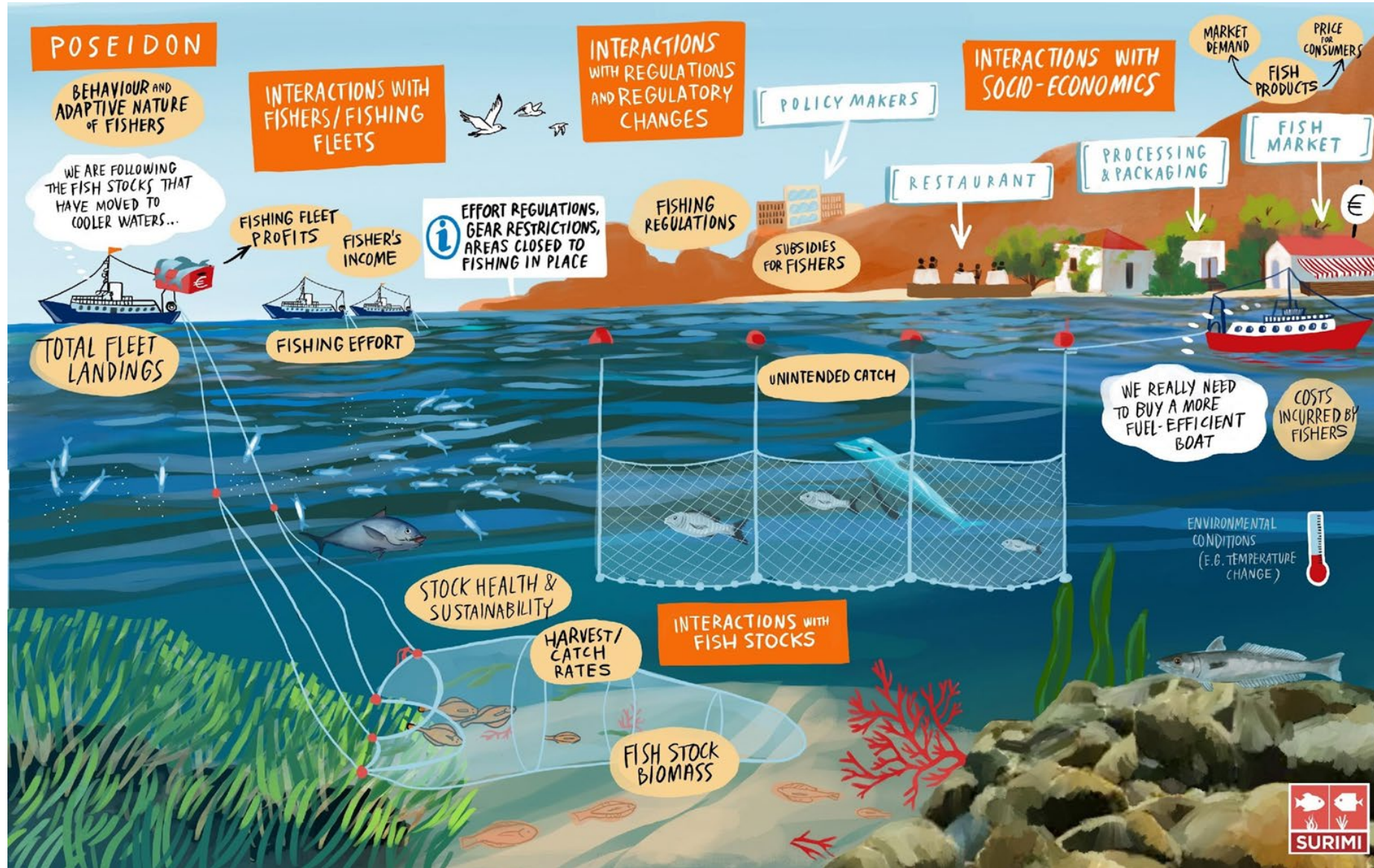


SURIMI models

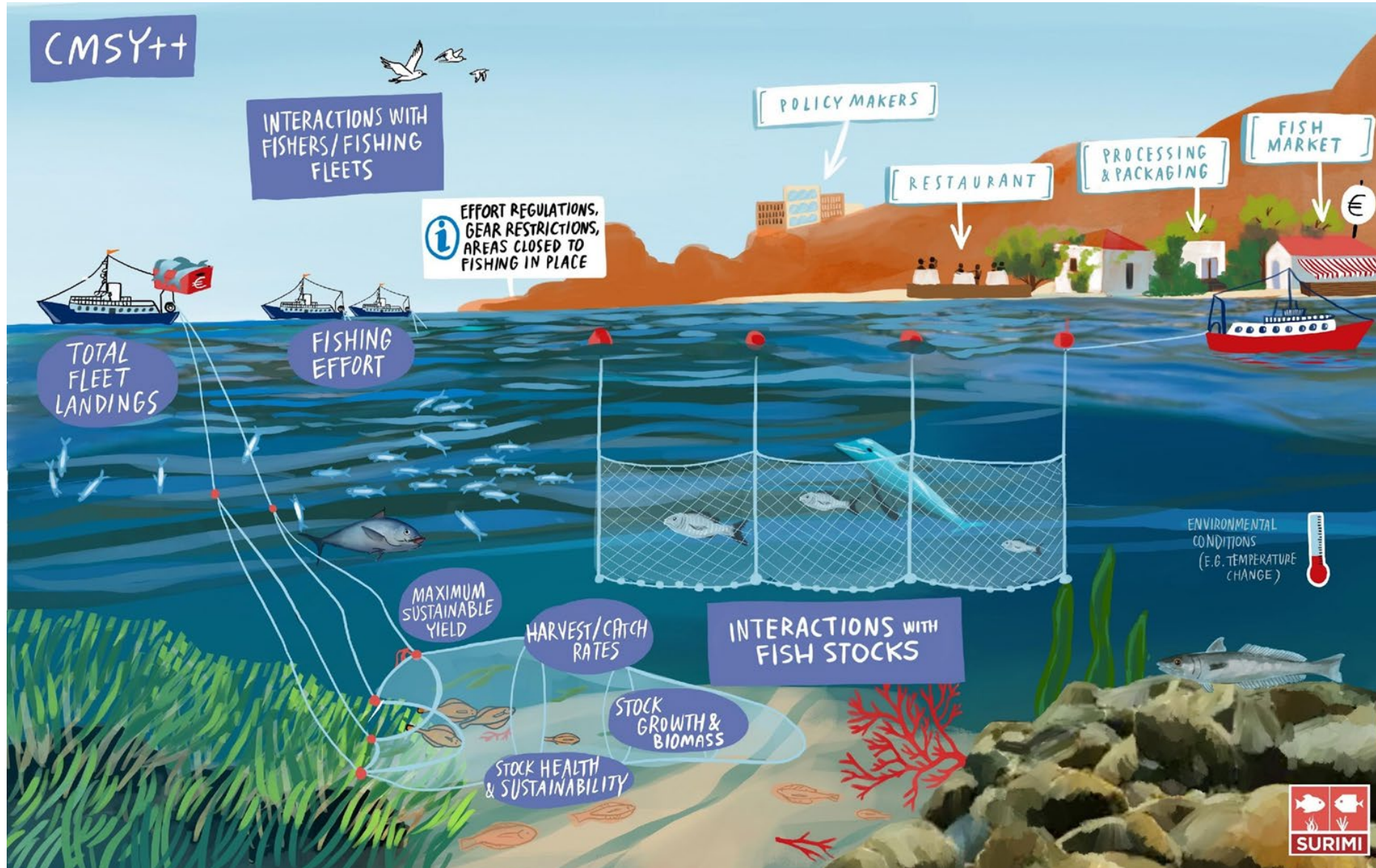
- Models are well-established and have been implemented individually throughout the world
- Novelty in SURIMI: we will combine the models, so they can be used in combination
- Case study area: Western Mediterranean



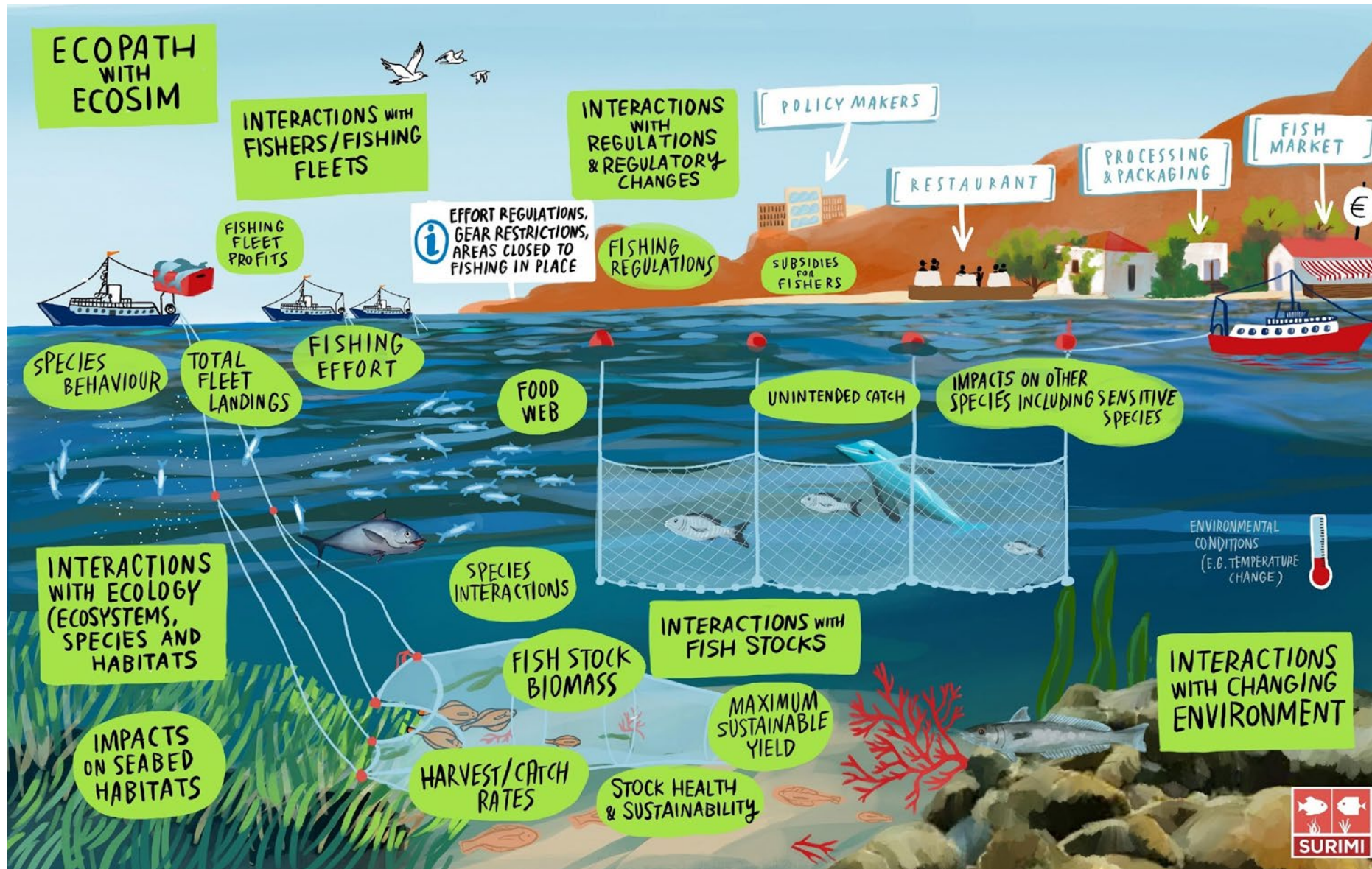
POSEIDON



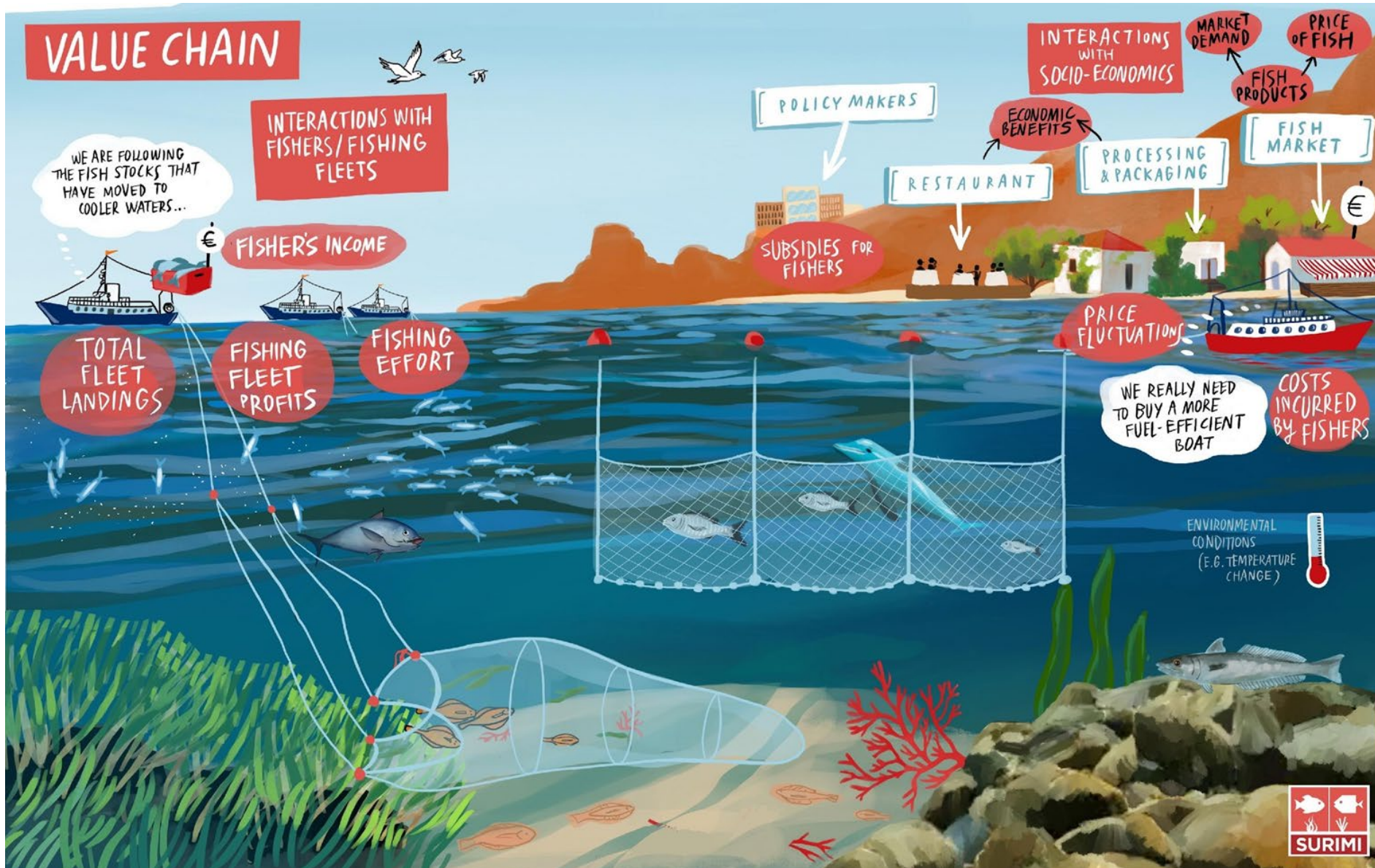
CMSY++



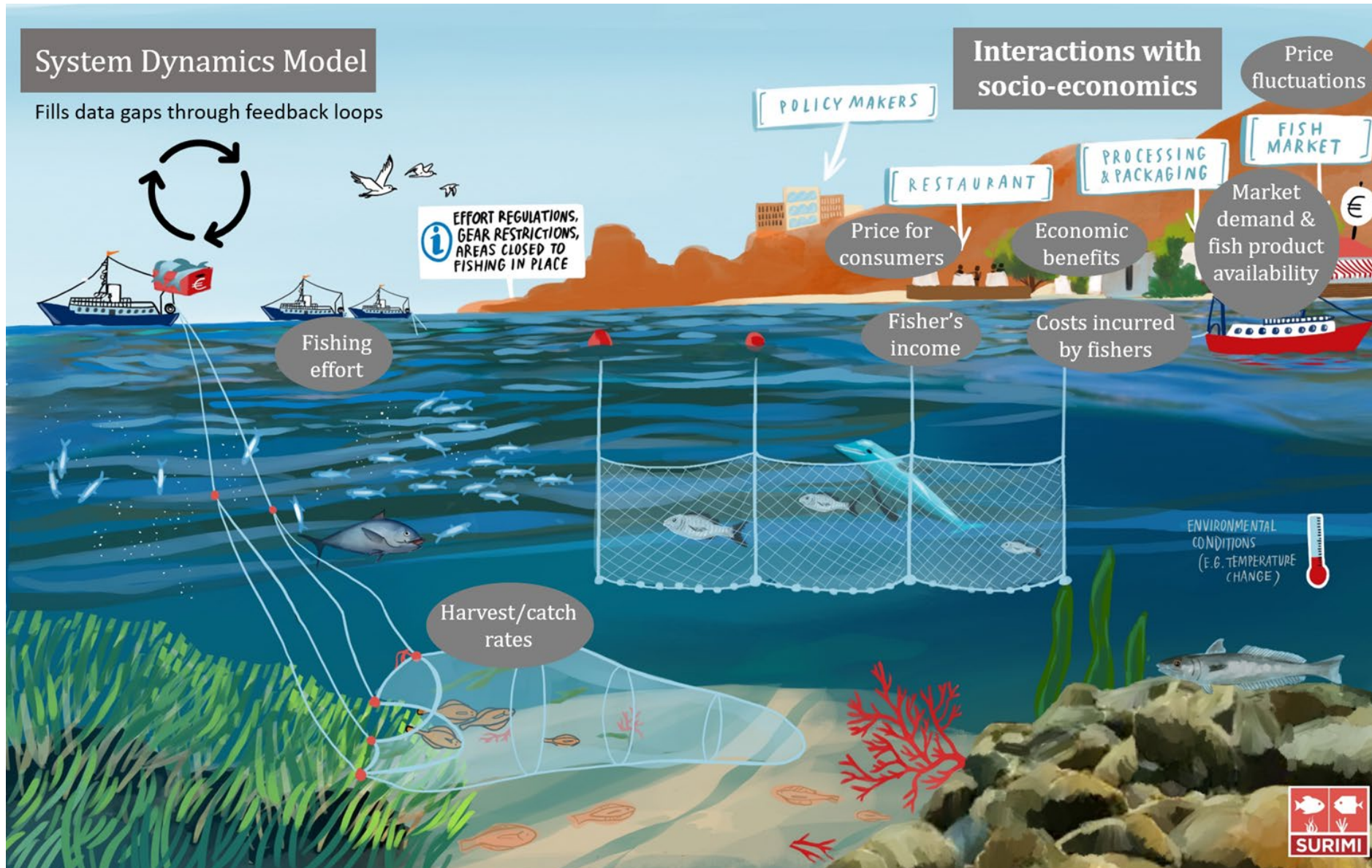
Ecopath with Ecosim (EwE)



Value Chain

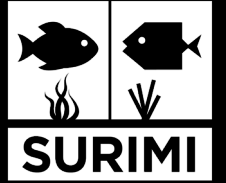


System Dynamics Model



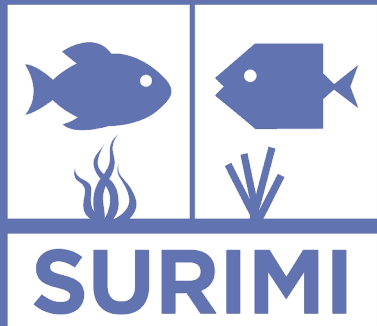
Coffee break

We'll resume at 11:05 CET



Online tool and feedback session

Introduction to the tool, collecting feedback and
Plenary discussion



SURIMI online tool (visual interface)

ITS PURPOSE



An interactive tool connecting science with policy, where users may test “what-if” scenarios on fisheries & marine ecosystems.

Translates complex model outputs into clear, visual insights.

HOW IT WORKS



Runs the previously presented models in sequence.

Displays their results into dashboards (maps, charts).

Designed for non-technical users: intuitive, web-based.

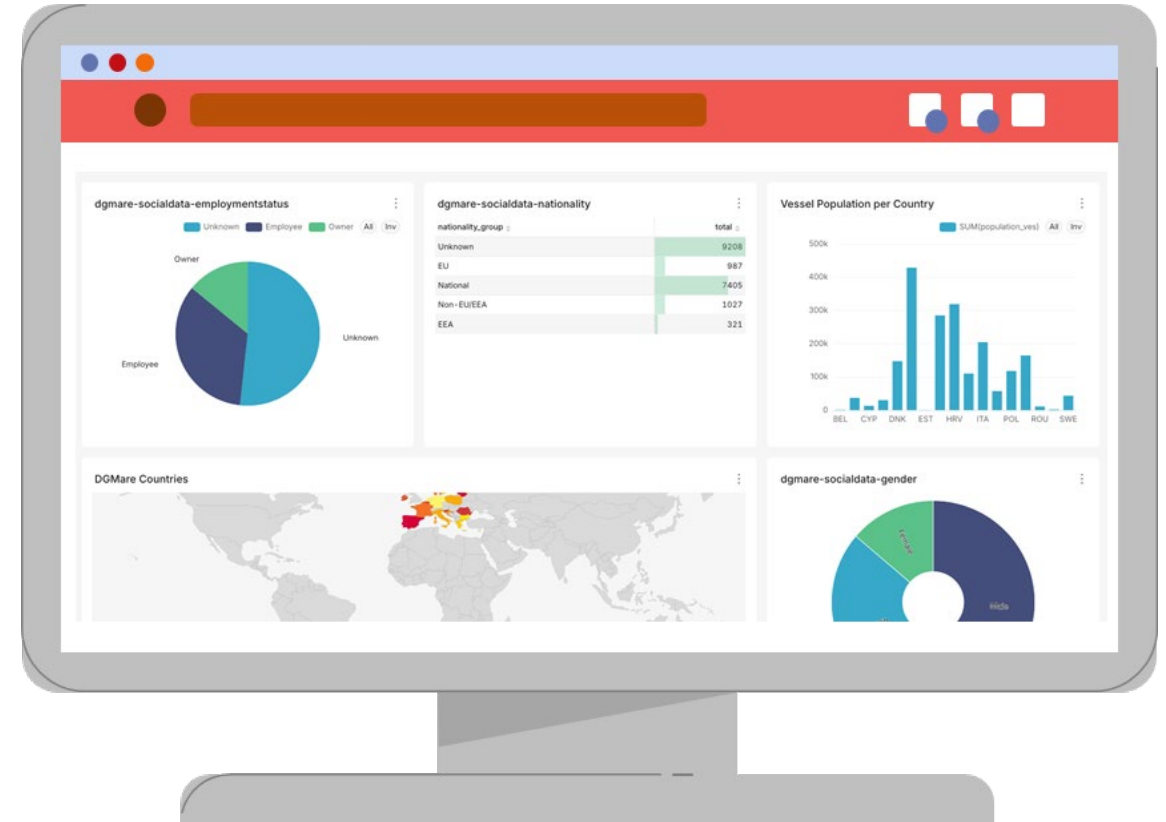
BENEFITS TO YOU



Compare alternative management or policy strategies.

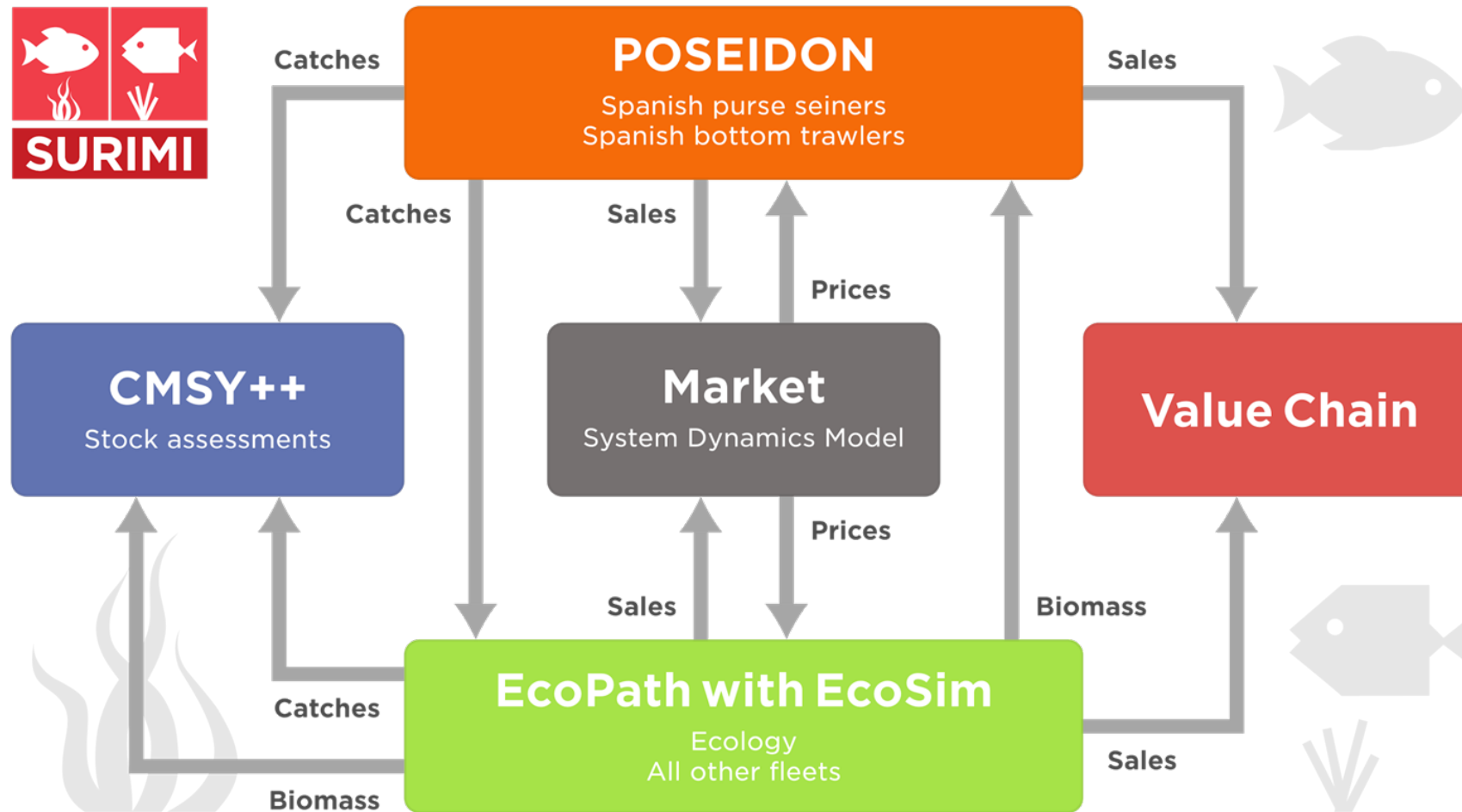
Make **evidence-based decisions** supported by real data.

Strengthen collaboration between **scientists, fishers, and policymakers**.

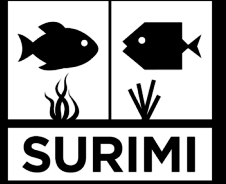


SURIMI models will be used in combination

They will exchange information to increase accuracy of predictions



**Collecting your feedback for
the design of the online tool**



Using Mural - an online whiteboard



- 11 questions for feedback
- Use post-it notes to answer
- Murals in English, French and Spanish

Feedback for online tool (visualisation interface)

The screenshot displays a Mural online whiteboard interface. At the top, there are six panels showing different model visualizations: 'Overview of all models', 'EwE - an ecosystem model', 'Poseidon - an agent-based model', 'Value chain', 'CMSY++ - a stock-assessment model', and 'System-dynamics model to fill data gaps'. Below these panels, there are several sections for feedback, each with a grid of yellow sticky notes. The sections are: 'What would you like this tool to help you with?', 'Showing results', 'What would make the tool most useful for you?', 'Trusting the tool and its results', 'Is there anything else you would like to tell us?', 'What are the main questions you would like this tool to help you answer?', 'What type of results are important for you?', 'How would you like to see the results? (For example in pictures or graphs, maps, simple numbers, short text or a mix of them?)', and 'What other information about the data or models would you like to see in the tool? (For example when and where the data were collected and under what conditions, who made the data, what methods were used to collect the data, what the quality of the data is, etc.)'. Each section has a grid of yellow sticky notes for users to provide feedback.



Using Mural

How to use Mural

1

Navigate around the mural

- Click and drag to move the Mural around



2

Zoom in and out

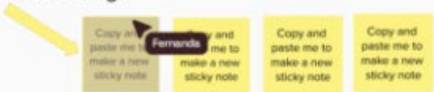
- Use your usual device controls to zoom in and out OR
- Use the icons in the bottom corner of your screen



3

Edit post-it notes

- Double click on the post-it note to change the text.
- Copy and paste to create a new one
- Drag them to move them around.
- You cannot edit a post-it note that someone else is editing:



Ready to try?

Play around. You can't do any harm

Click on me to edit the text

Click on me to edit the text

Click on me to edit the text

Click on me to edit the text

Click on me to edit the text

Click on me to edit the text

Click on me to edit the text

Click on me to edit the text

Click on

Click on

Click on

Click on

Copy and paste me to make a new sticky note

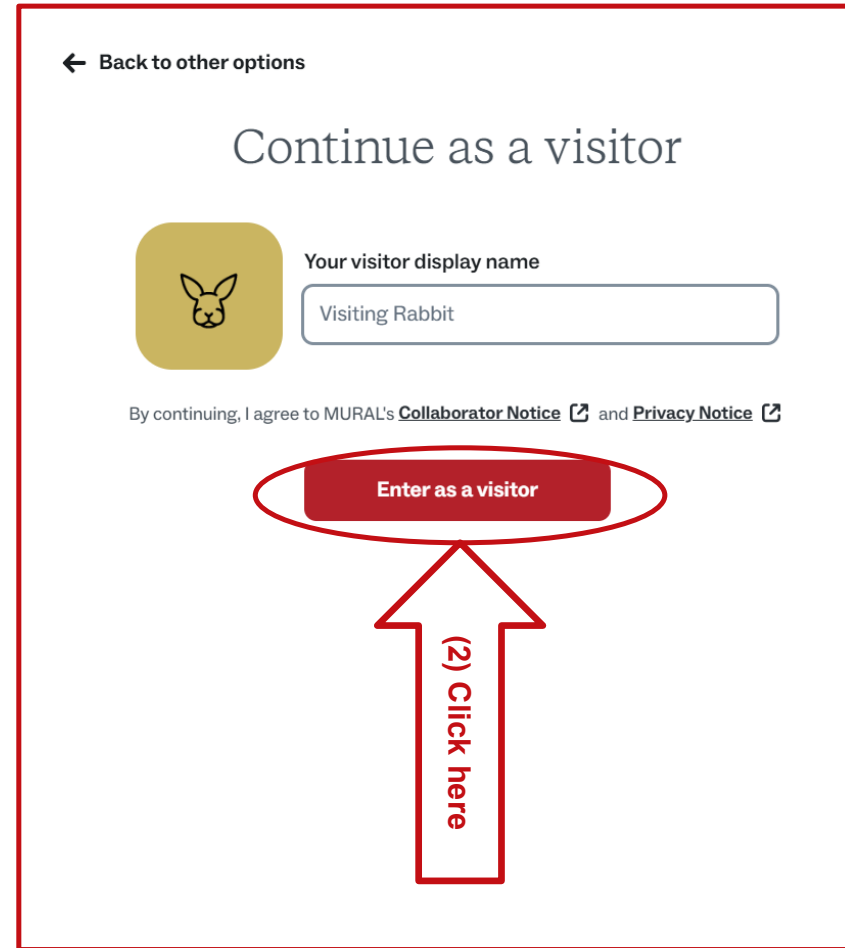
Copy and paste me to make a new sticky note

Copy and paste me to make a new sticky note

Copy and paste me to make a new sticky note



Entering Mural

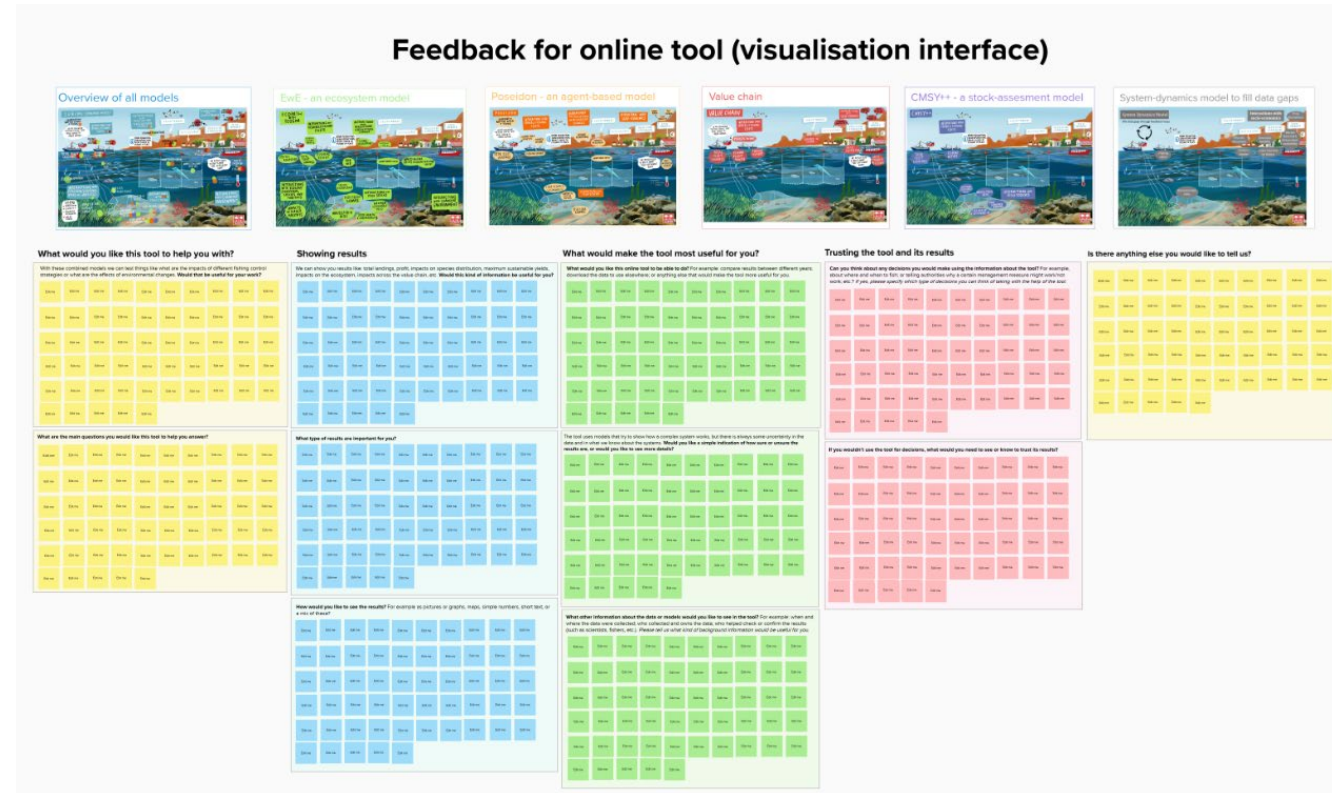


Please go to the zoom chat and open the link provided to access the practice Mural in your preferred language

Individual work in Mural

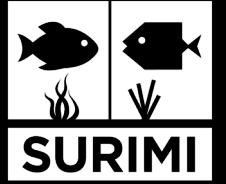


- 30 min individual work followed by Plenary discussion
- Links to Murals in chat
- If you have any questions, please ask us



Please go to the zoom chat and open the link provided to access the Mural in your preferred language

Plenary discussion



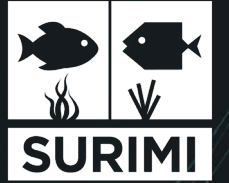
Closing feedback

Questions:

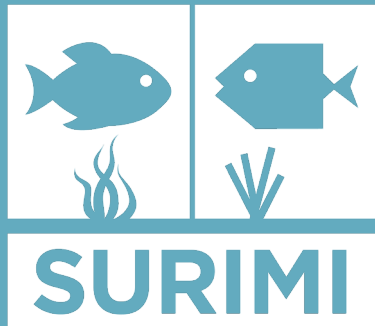
- Which stakeholder type fits best to you?
- Can you imagine using the SURIMI Toolbox in the future?
- Go to: Slido.com
- Enter code: #SURIMI

Joining as a participant?

Enter code here



Closing and next steps:



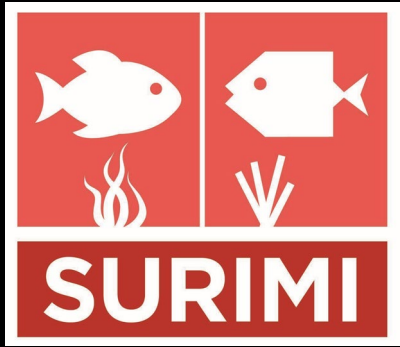


Summary & key take-aways

Next steps



- Sign up to the Stakeholder Forum to keep involved:
https://docs.google.com/forms/d/e/1FAIpQLSfFD92s_OUc4luk3R_mz8EeP8mOtRL5dHHurmyyE7qB7J6mZw/viewform
 - Sign up via the form (in English)
 - OR send an email (in English/Spanish/French) to me (arodriguez@marineboard.eu) or the AC Secretariats
 - We'll explore how to keep you involved if English language is a barrier
- Next stakeholders workshops (in English):
 - Spring 2026 in Brussels: present a prototype of the Toolbox
 - Spring 2027 in Brussels: present final tools



Thank you for your valuable contributions!



surimi-project.eu



[SURIMI Project](#)



[@surimi_project](#)



Funded by
the European Union